

INTRODUCTION

URBAN CONTEXT

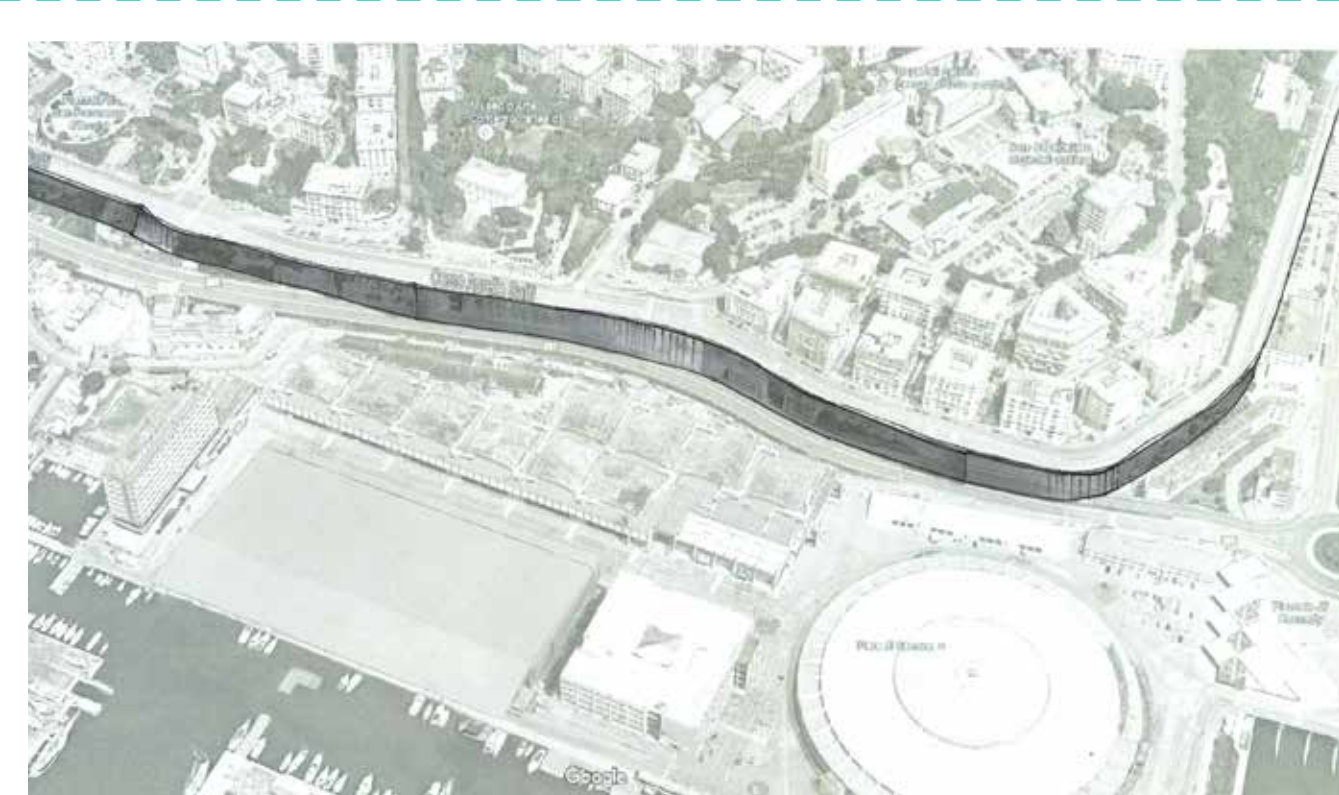


BLUEPRINT COMPETITION | GENOVA

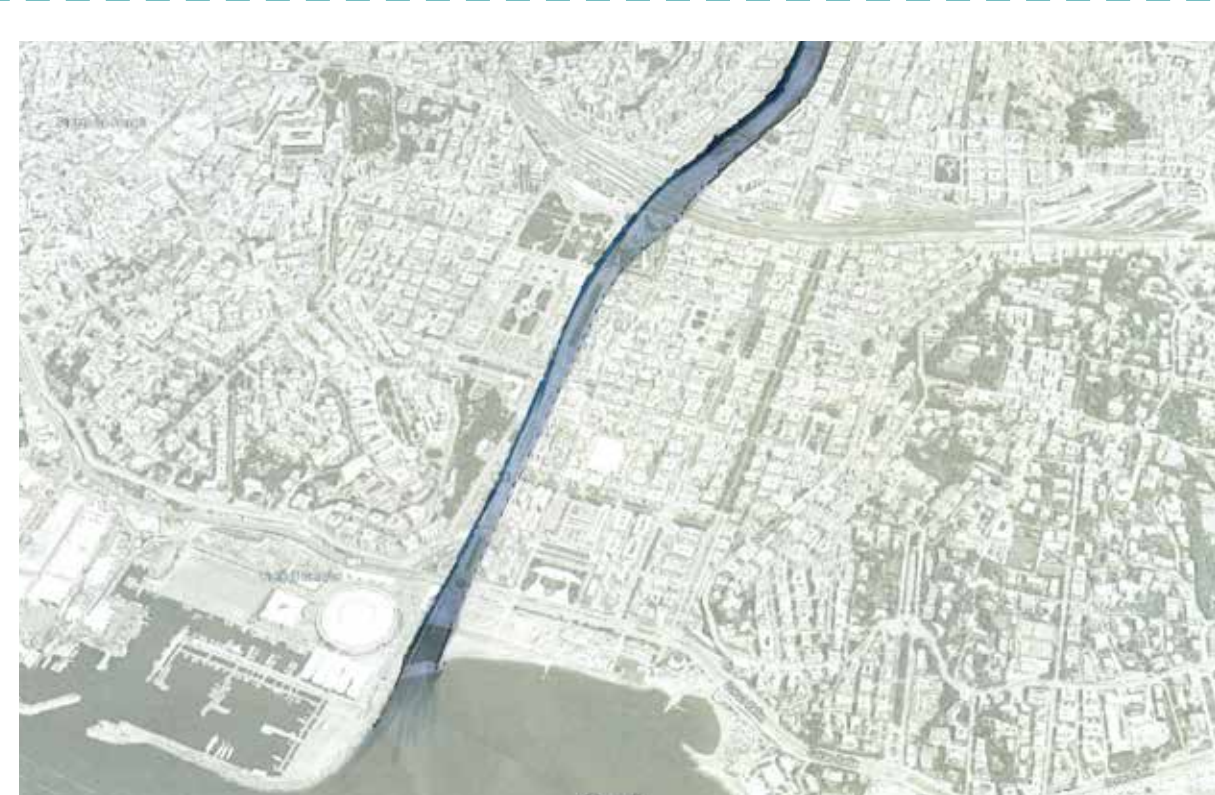
Blueprint Genova is a proposal by Architect Renzo Piano which attempts to reconcile Genova the port to Genova the city. It reconfigures the portion of the city that runs from Porta Siberia in Punta Vagno, attempting to build a bridge between citizens' demands and those of port operators.

"...the crisis of the international Trade Fair and the need to redevelop the whole area between Piazzale Kennedy and the Rotonda di Carignano offer a unique opportunity to restore a waterfront to the city, and to reposition the sports activities in areas and situations of better quality, with all the appropriate facilities for water sports."

This competition aims to redevelop the former Trade Fair site located along Corso Aurelio Saffi. The urban void of the former Genova Trade Fair is one of the most fragile parts of the city. The competition will design spaces capable of generating places that offer opportunities for people to come together, share values, and celebrate the rituals of what is significantly called "urbanity".



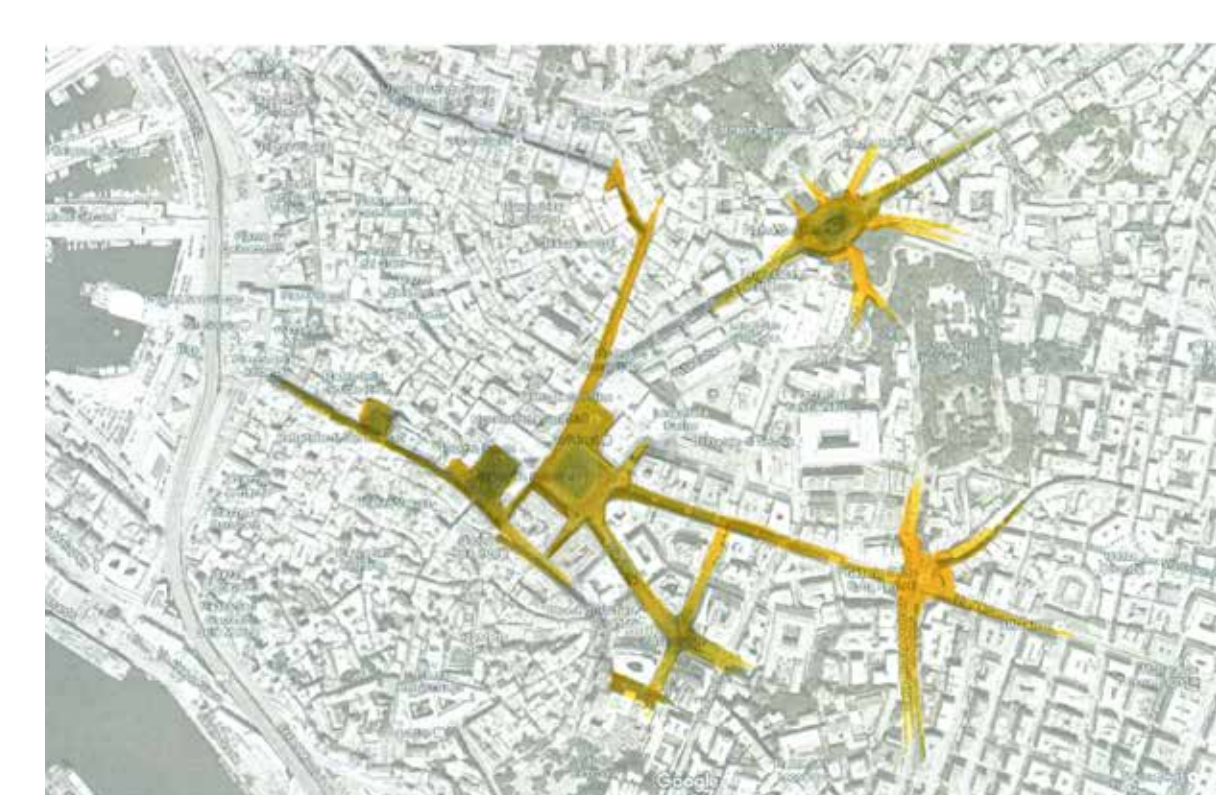
Retaining wall reminiscent of the ancient fortification



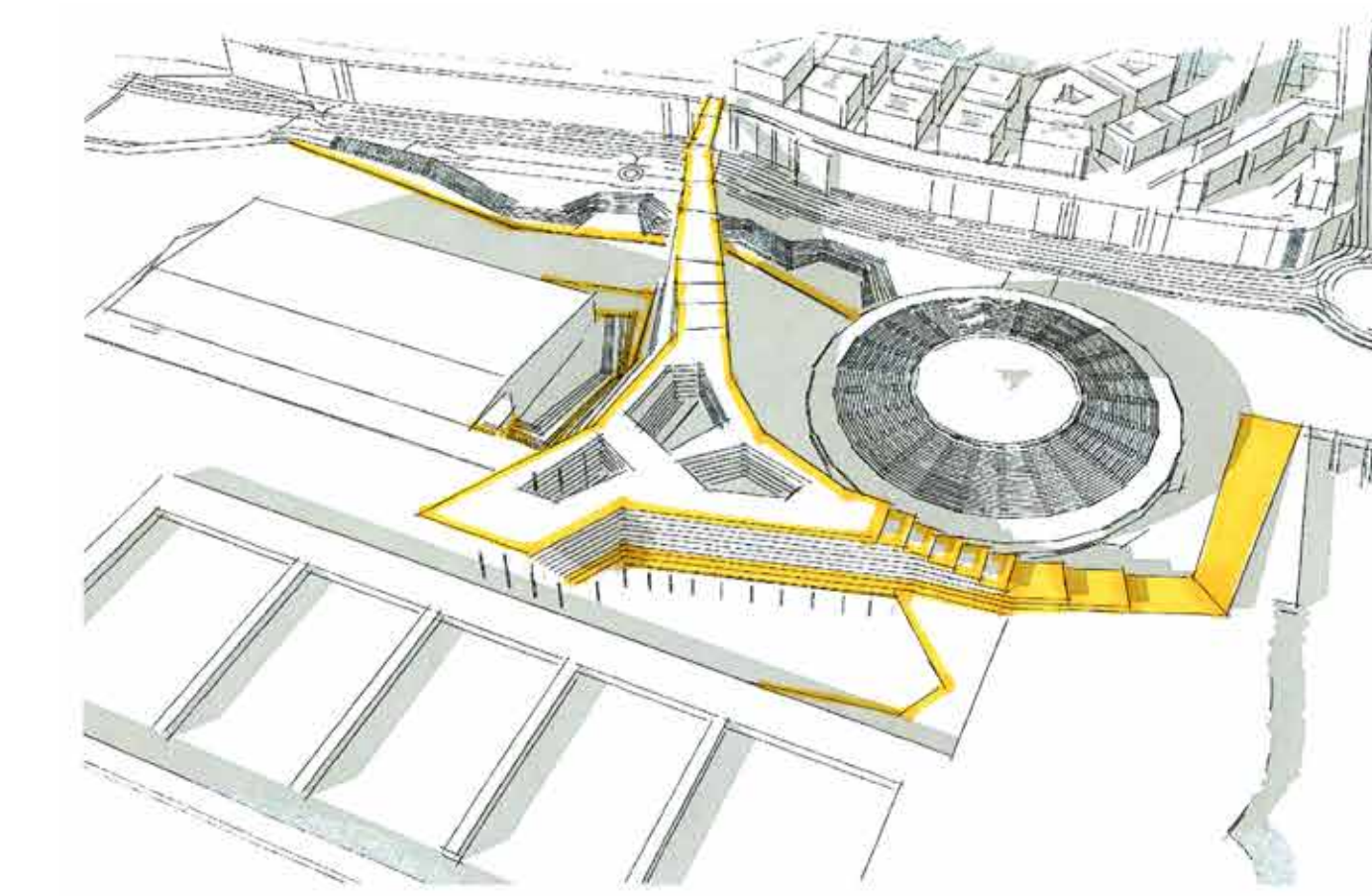
The river Bisagno



Green spaces: a part of the Urban fabric



Piazzas: Urban nodes



Pedestrian public access promenade along peripheries and interior spaces

FUNCTIONAL ANALYSIS

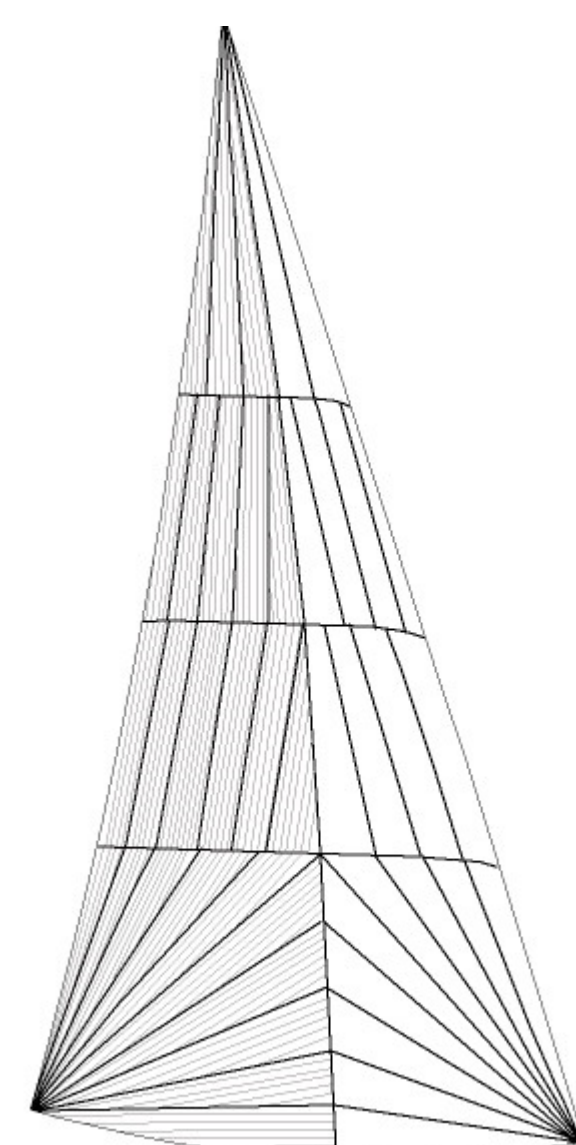
In order for this reactivate this space and to enable it to function year round and avoid urban decay, it is necessary to create a mixed-use program. A mixed functionality would enable the site to grow more connected with the city and it's people eventually.

12 am	3 am	6 am	9 am	12 noon	3 pm	6 pm	9 pm
Residential	Residential	Residential Park activities Sailing	Park activities Sailing Cafes Commercial Offices	Hospitality Sailing Eateries Commercial Offices Public events	Hospitality Park activities Sailing Eateries Commercial Offices Public events	Hospitality Park activities Eateries Public events	Residence

CONCEPT



SITE STUDIES



Internal garden spaces interspersed with the city fabric

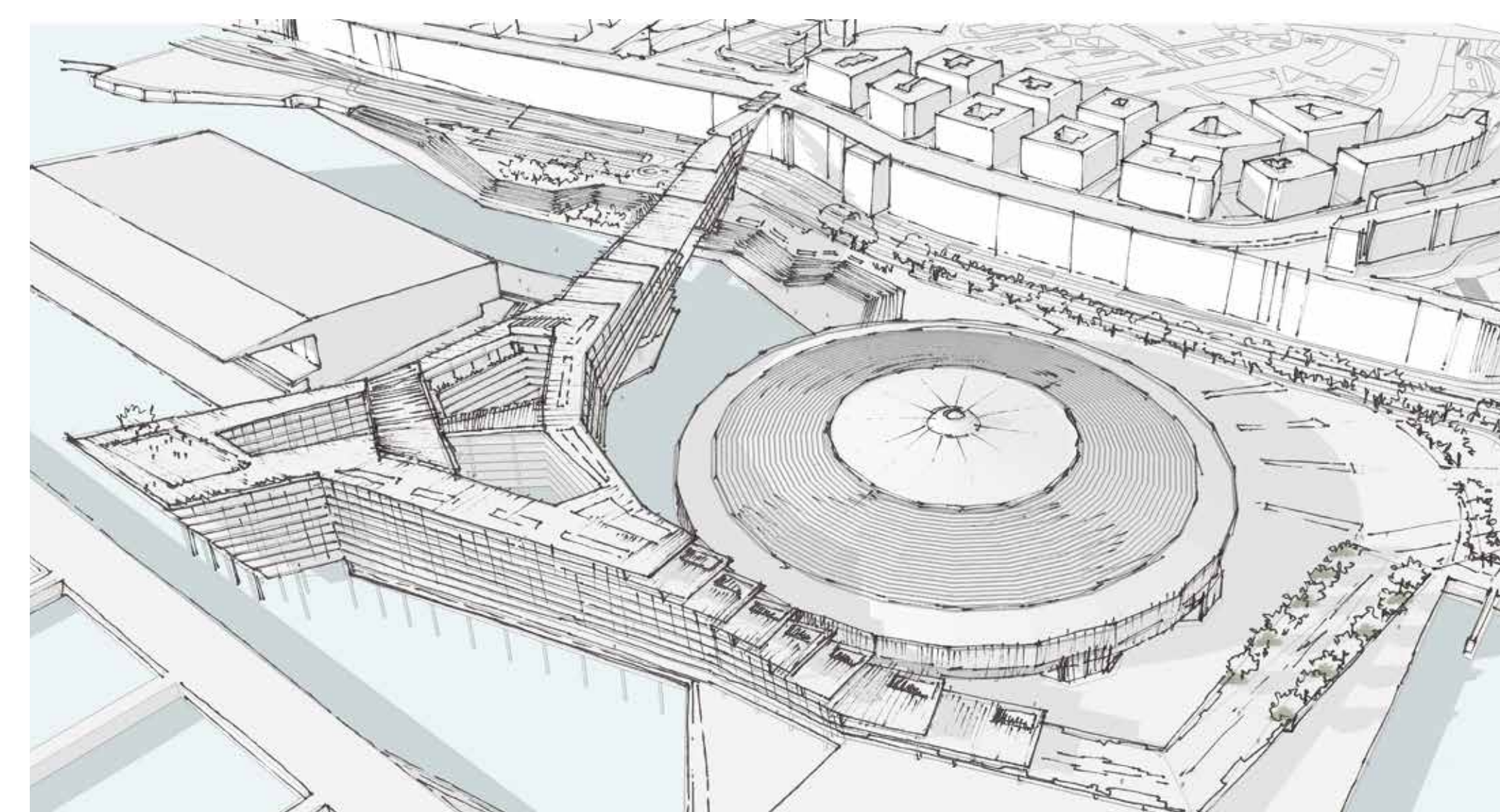


Stepped terraces along the gently rising hilly slopes

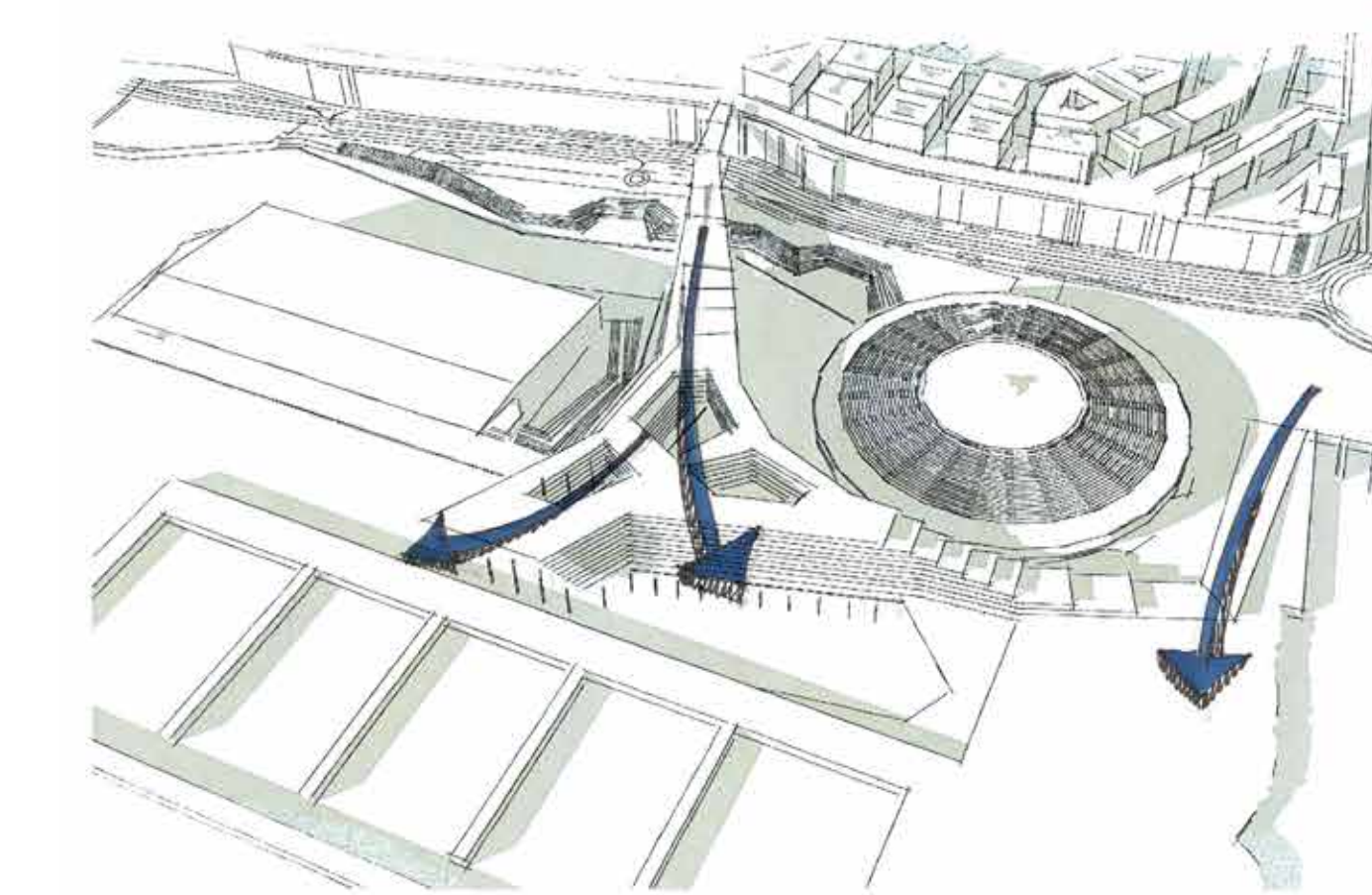
GENOVA... also signifies a type of large jib or staysail that overlaps the main sail, sometimes eliminating it. It was originally referred to as an "overlapping jib" and later as a Genova jib.

The form is derived from an abstraction of the force diagram of a genoa.

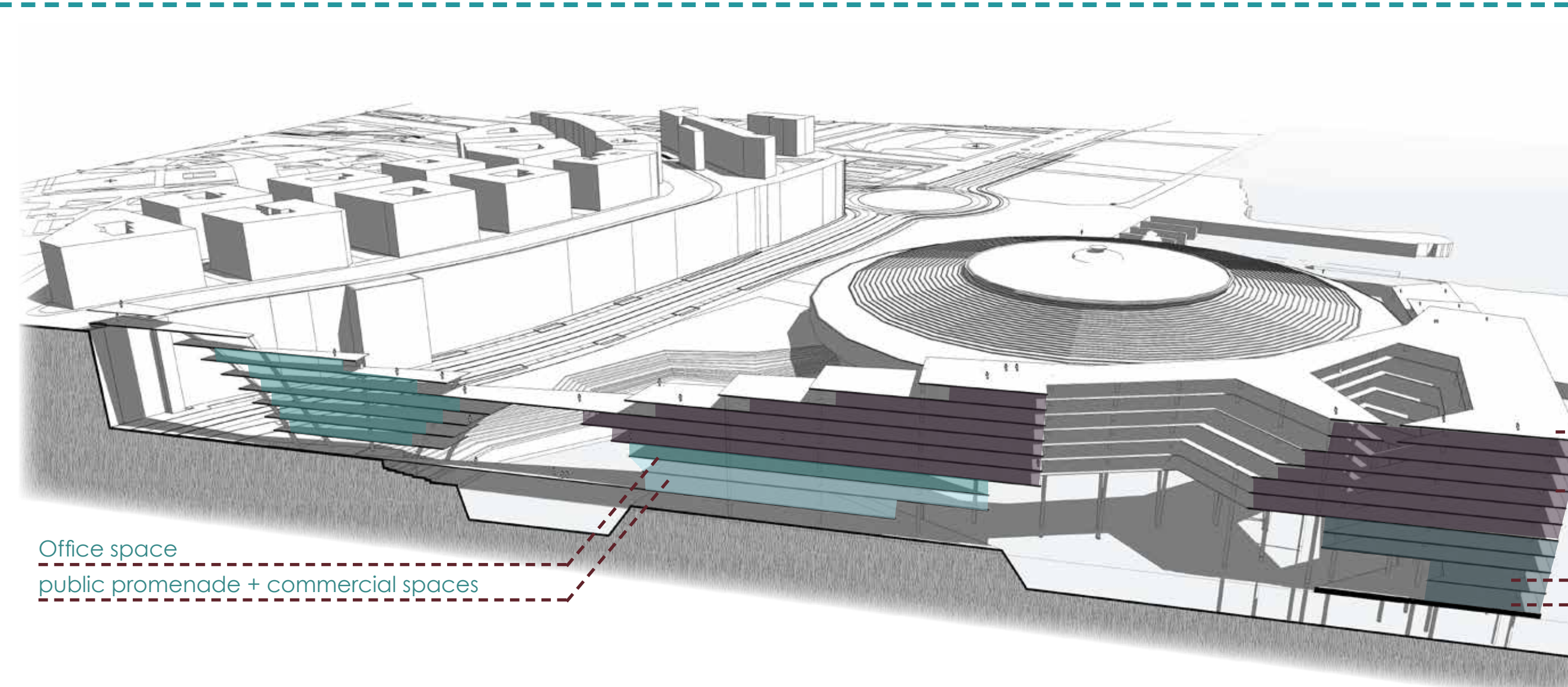
RECREATING GENOVA
Our proposal attempts to recreate in some ways the essence of Genova, the hilly Italian town while creating the opportunity to experience the waterfront physically, thus giving the waterfront back to the city.



Panoramic views from viewing decks, promenade and residential balcony spaces



3 main access points to approach the waterfront

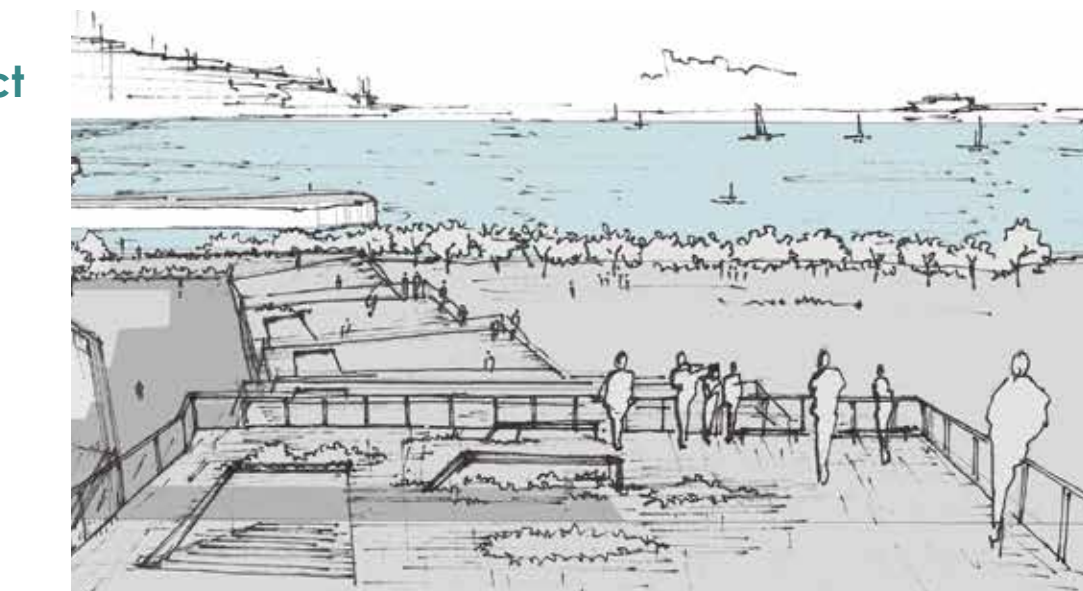


Office space
public promenade + commercial spaces

PHYSICAL CONNECTION
To overcome one of the main issues identified on site, the lack of direct connection, we propose a direct (pedestrian) link from the upper level of the old wall. This combined with the vistas offered by the recombination of the existing volumes and the reorientation of the site lead to the form developing into the proposed iteration.

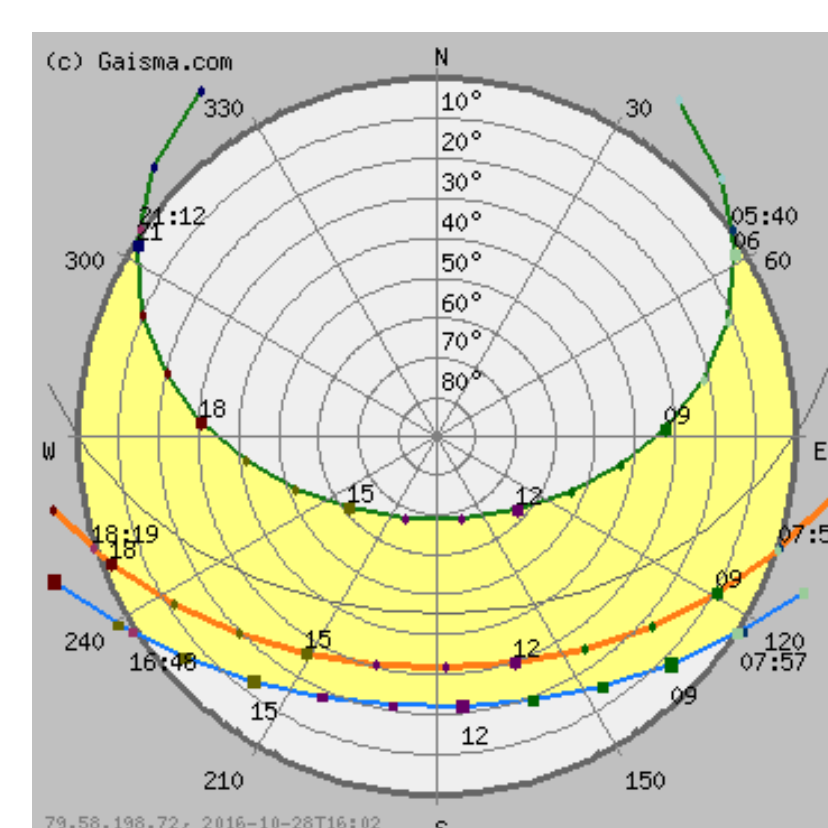
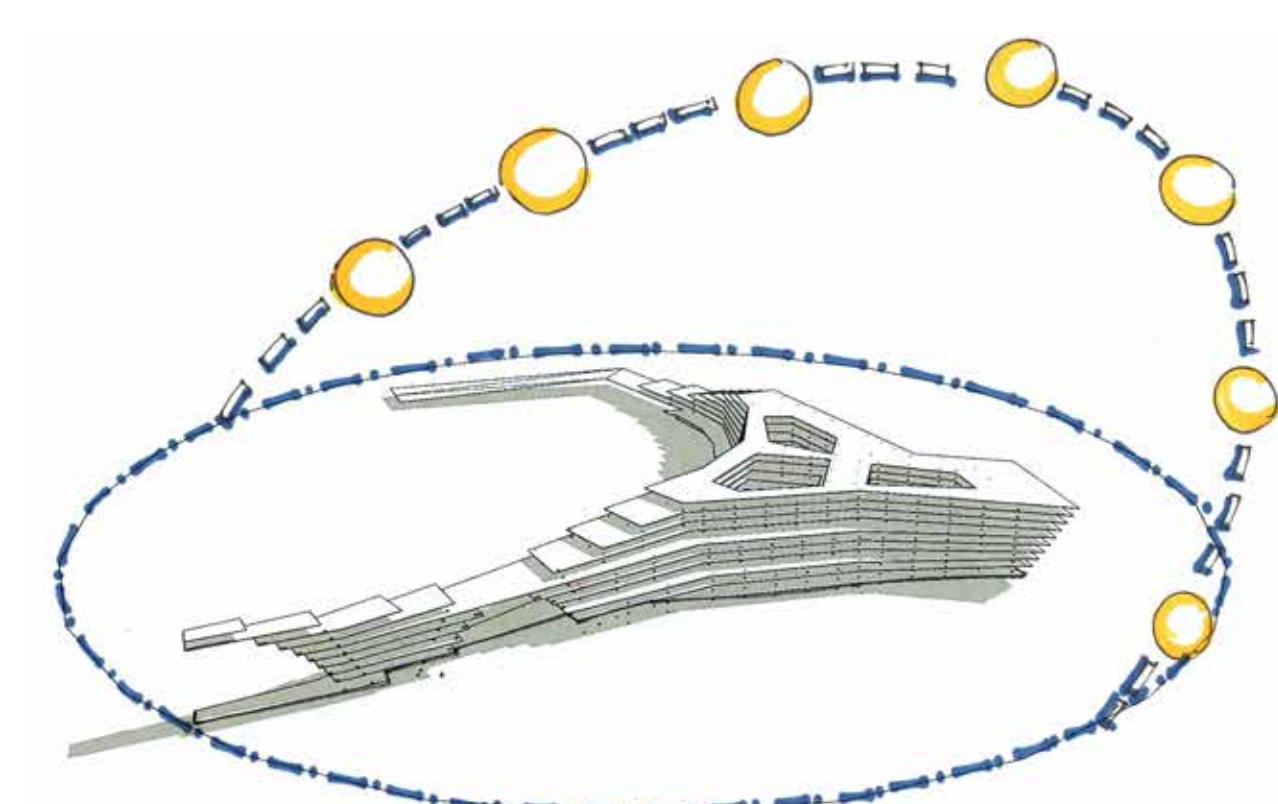
FUNCTIONAL DISTRIBUTION
The functions are distributed vertically with public spaces being the only function moving all along the external spaces in the building.

- Roof Garden
- residential + hospitality
- Restaurant spaces
- Hotel lobby



Green spaces like terrace gardens, roof gardens, pedestrian promenade interspersed within the architecture

SOLAR PATH STUDY



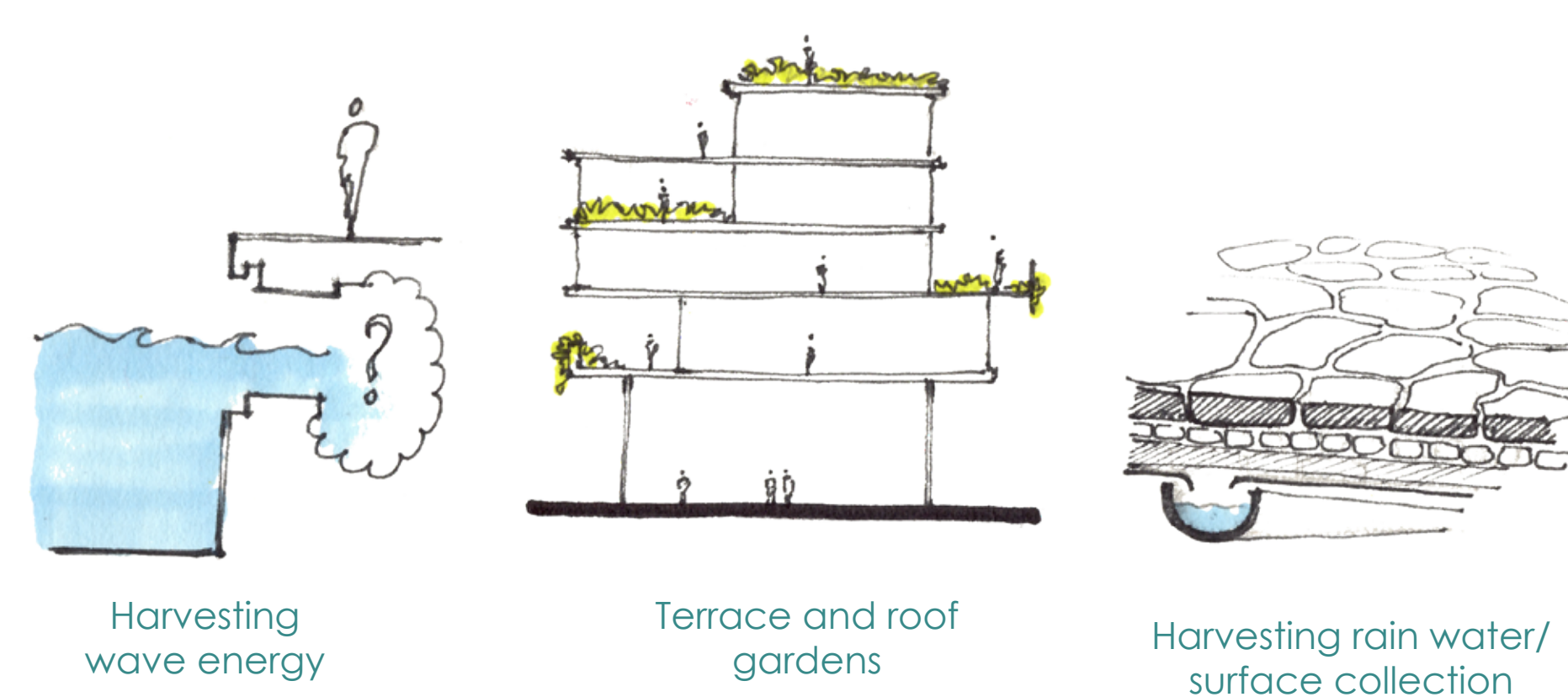
A study of the sun path diagram for our location helped decide the location of functions

Hospitality spaces allocated towards the South east corner with higher solar gain in the second half of the day.

Residential units facing North and north-west while some apartments open onto the vast water courtyards and green terraces.

Summer and winter swimming areas with appropriate orientation along the lower levels of the building

SUSTAINABILITY MEASURES

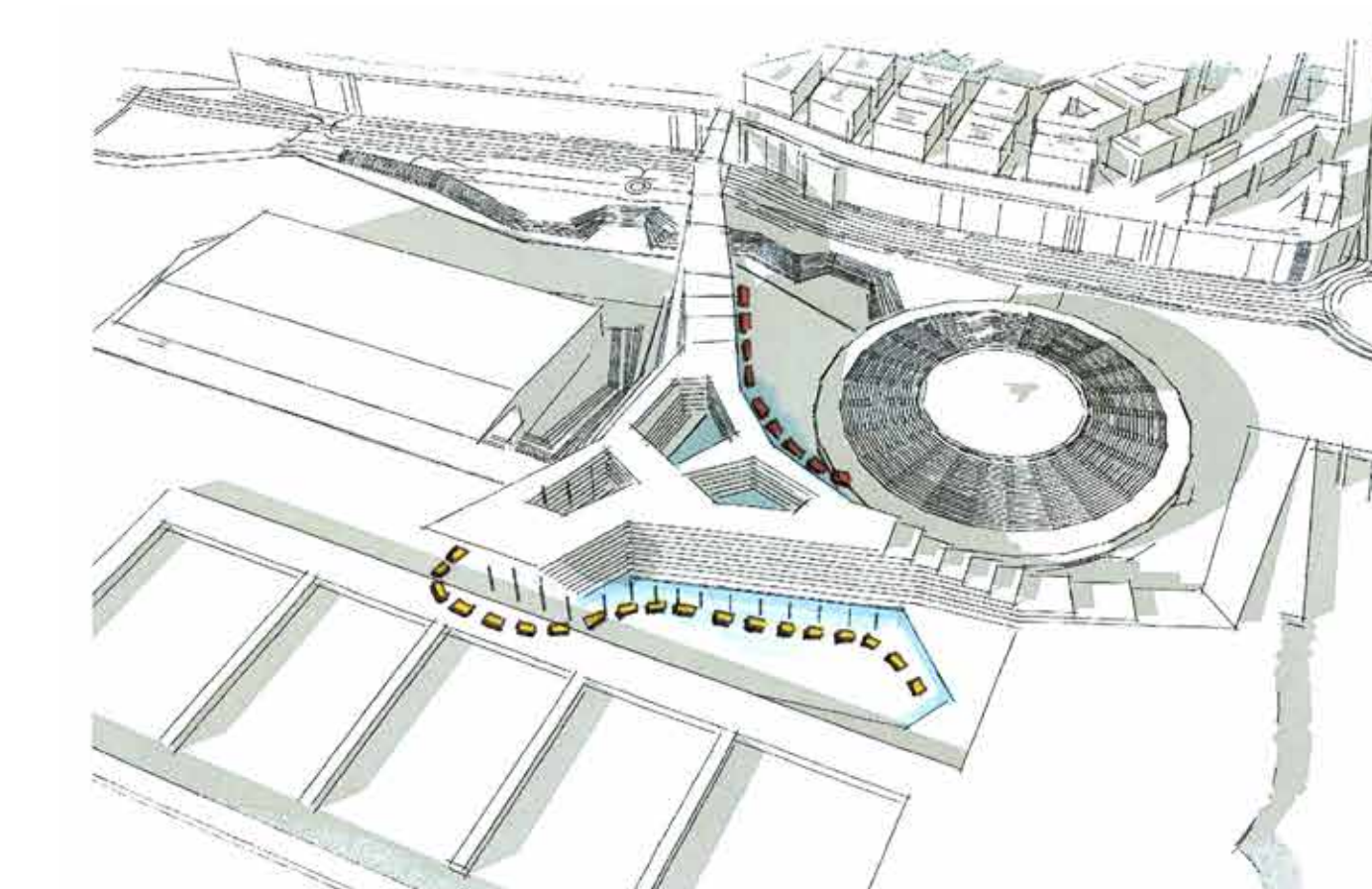


Wave energy harvesting devices

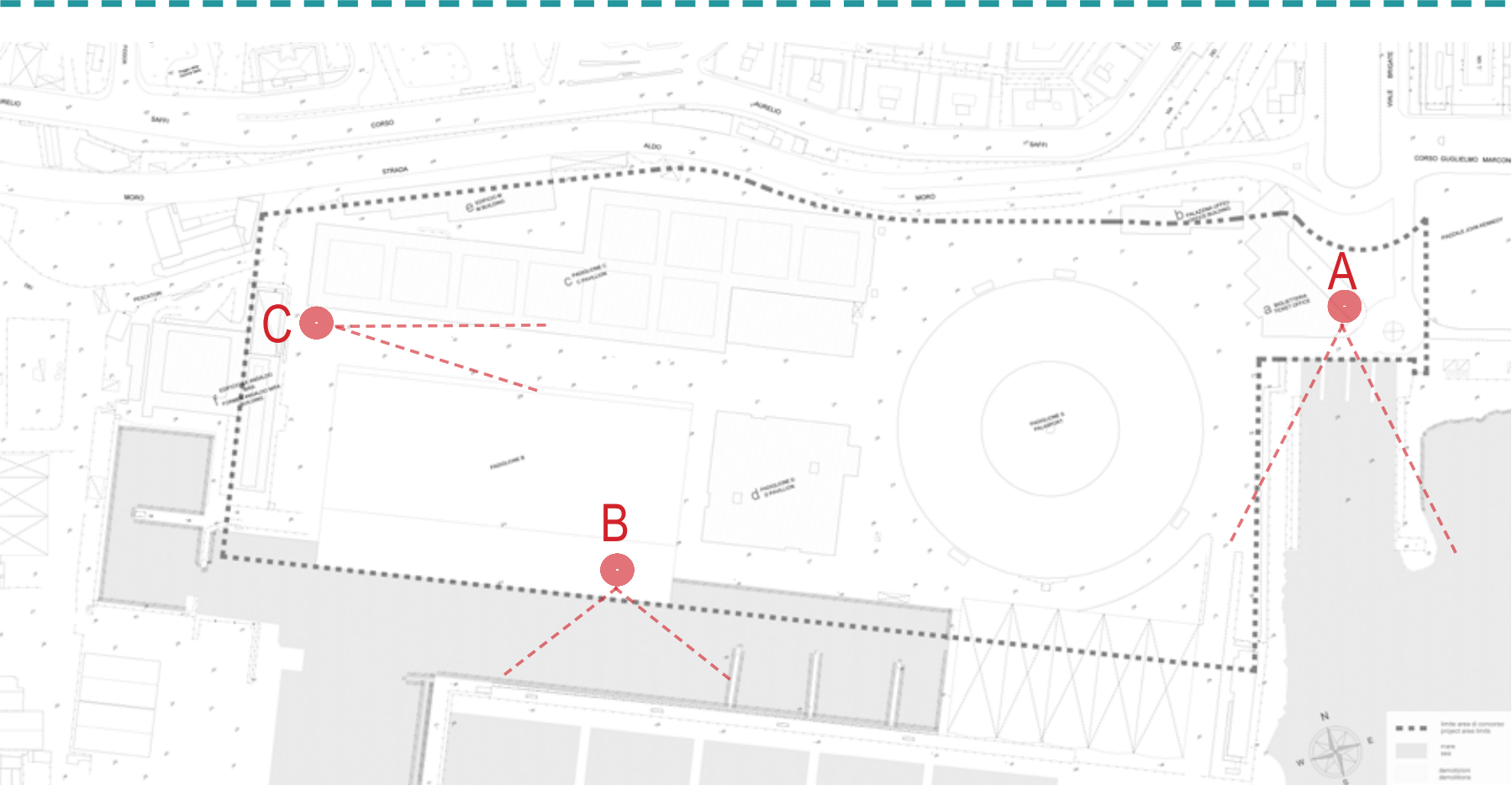
solar panels used to shade surface parking



Green spaces like terrace gardens, roof gardens, pedestrian promenade interspersed within the architecture



Summer and Winter public areas and swimming spaces



A | View of the River Bisagno at Site entrance



B | View from the Exhibition Pavilion



C | Space behind Nouvel Pavilion



D | Sea Barrier wall

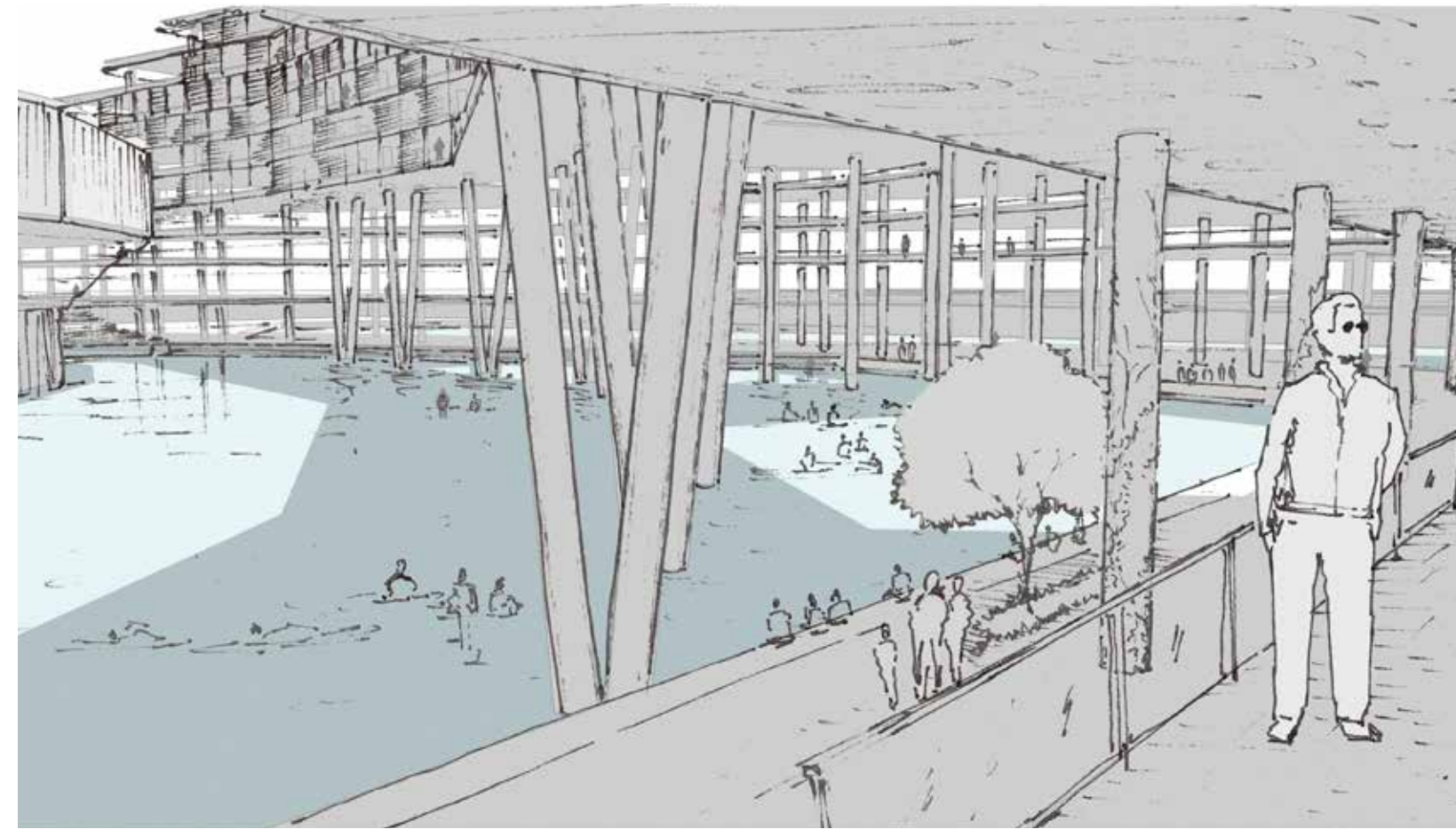


RECONNESSIONE CON IL GENOVA | RECONNECTING WITH GENOVA

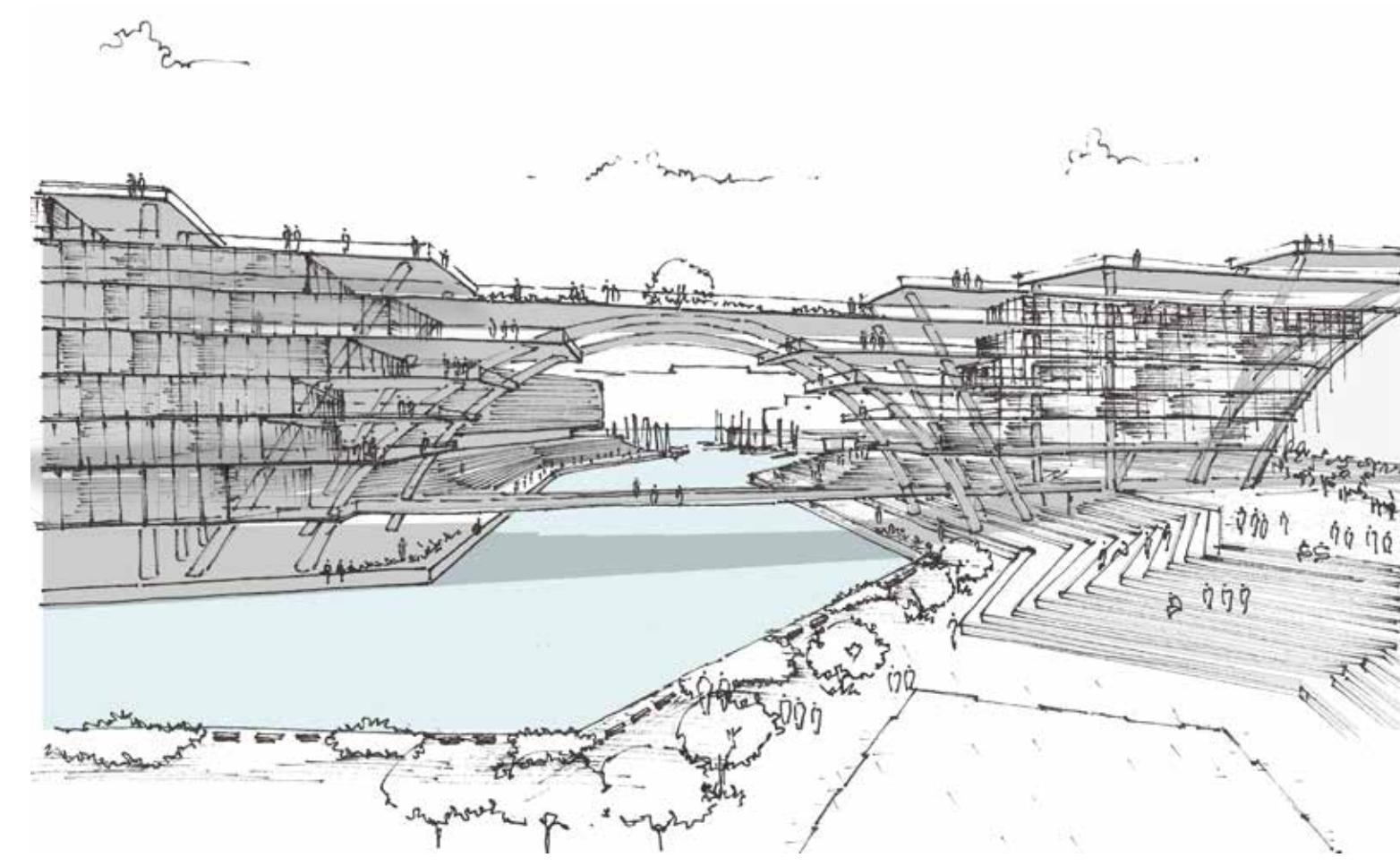
RENZO PIANO BLUEPRINT COMPETITION | FALL 2016

RITINHA FERNANDES | TRADD HORNE

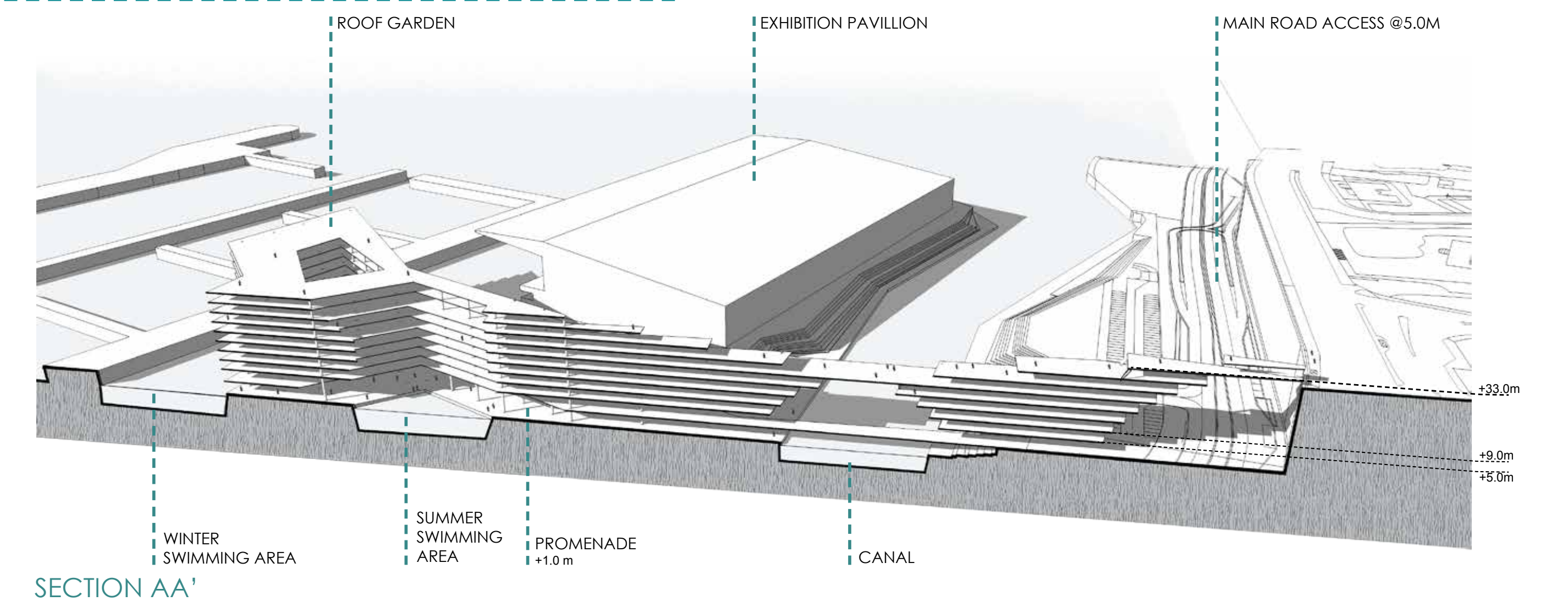
View from public promenade at 5.0m



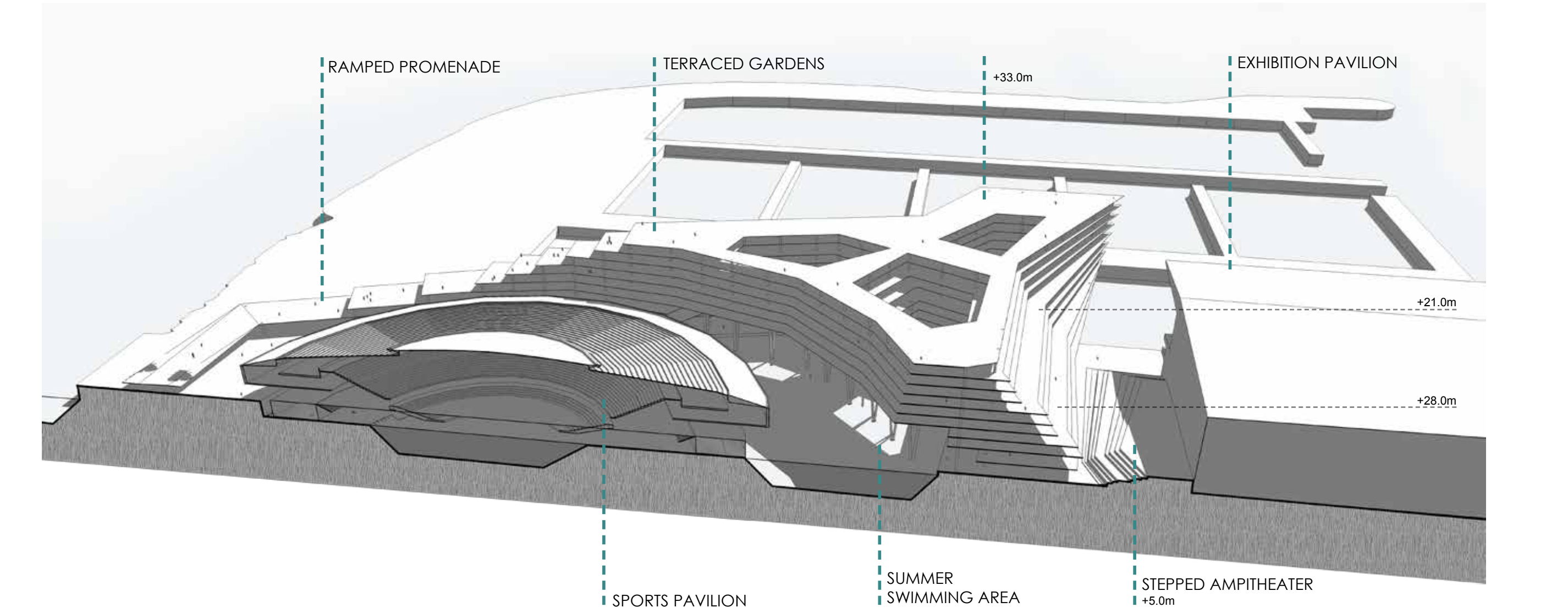
Structural element framing the promenade



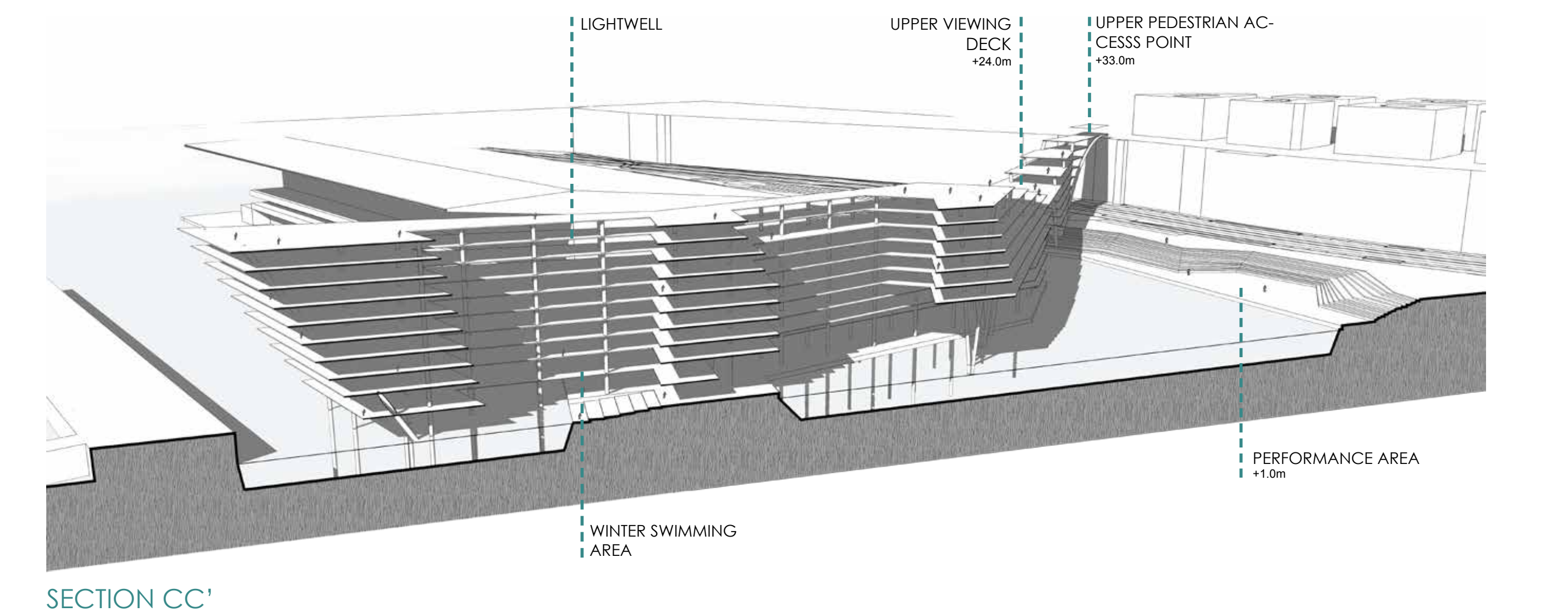
Structural element framing the amphitheatre spaces



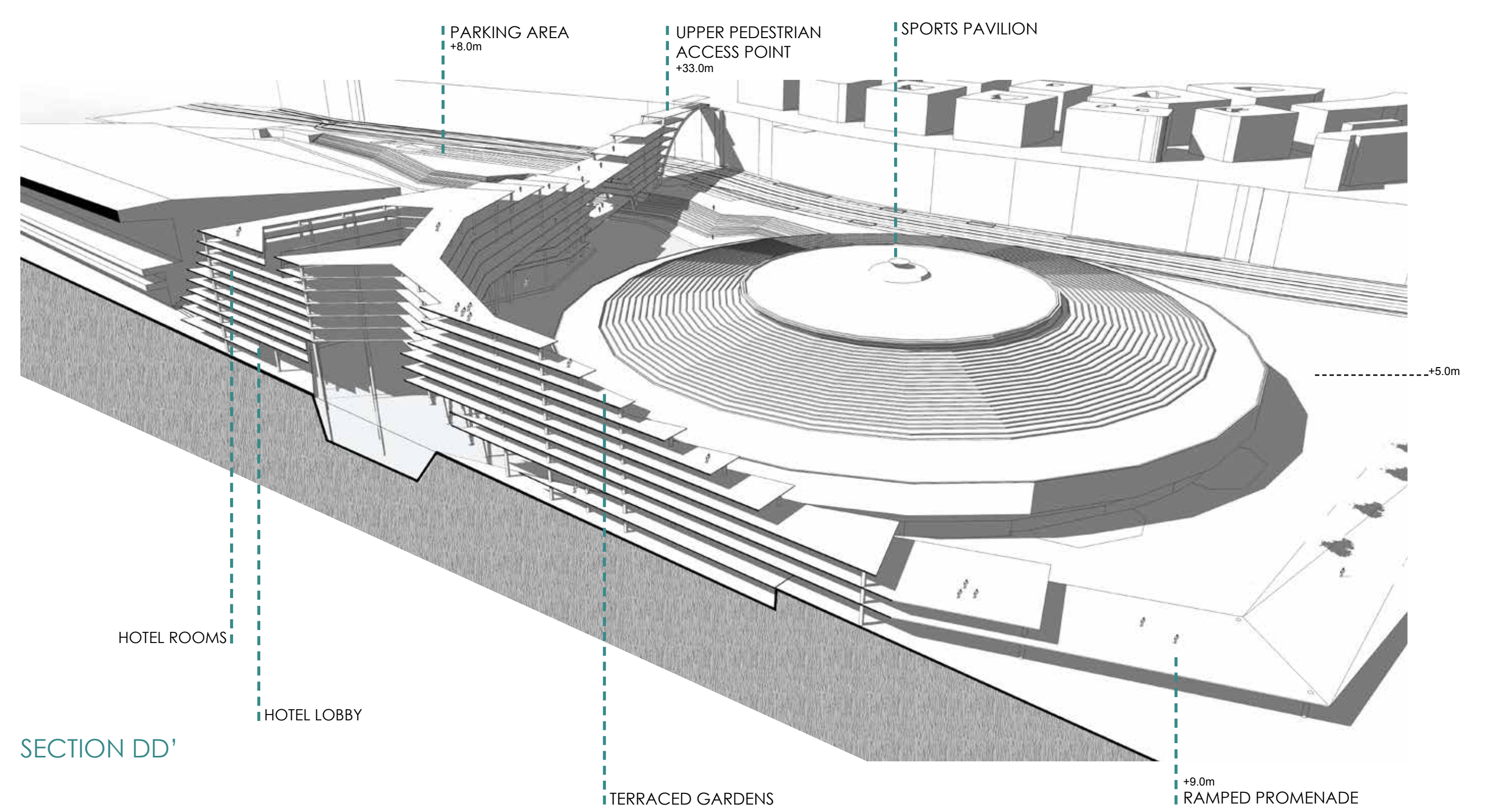
SECTION AA'



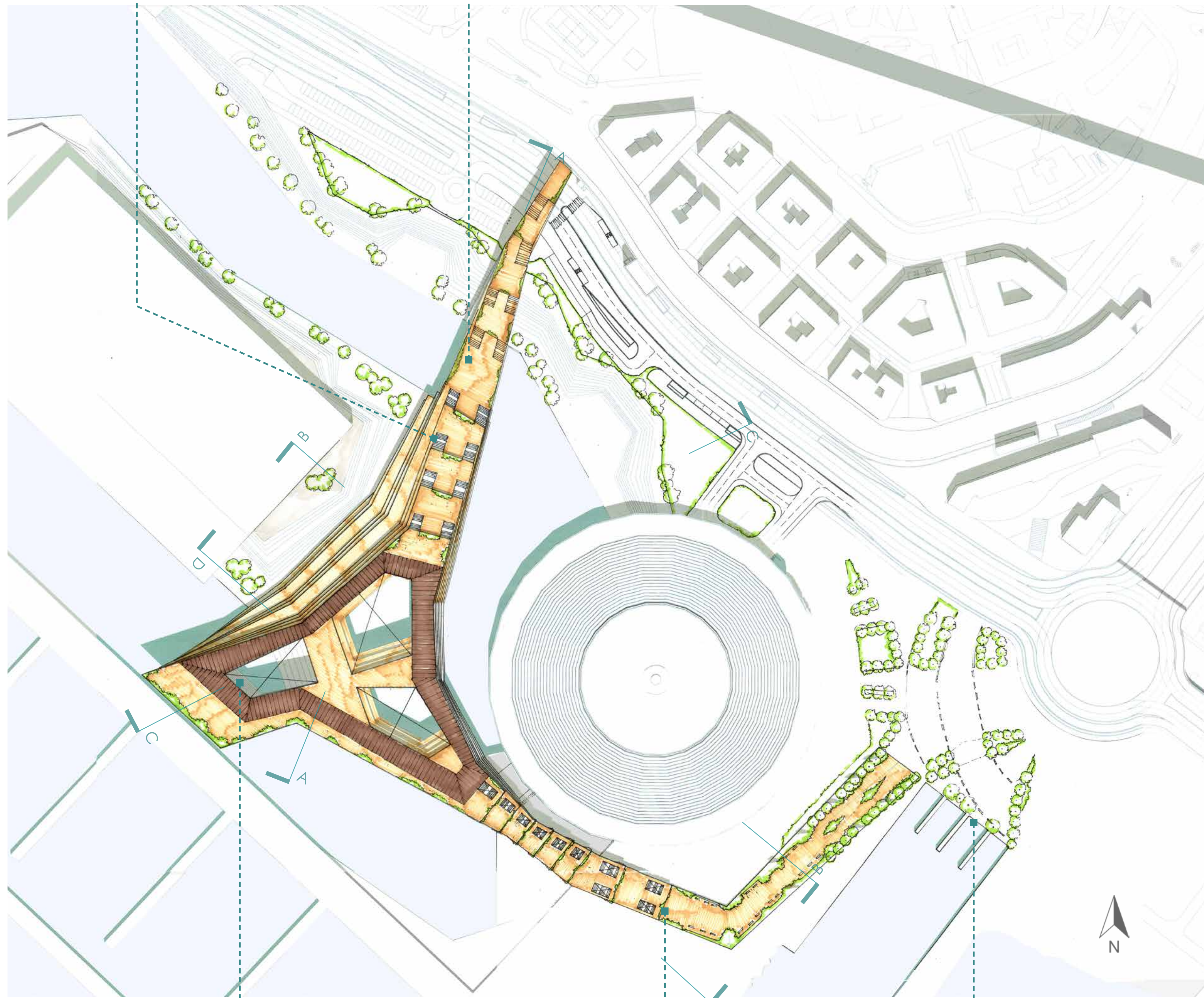
SECTION BB'



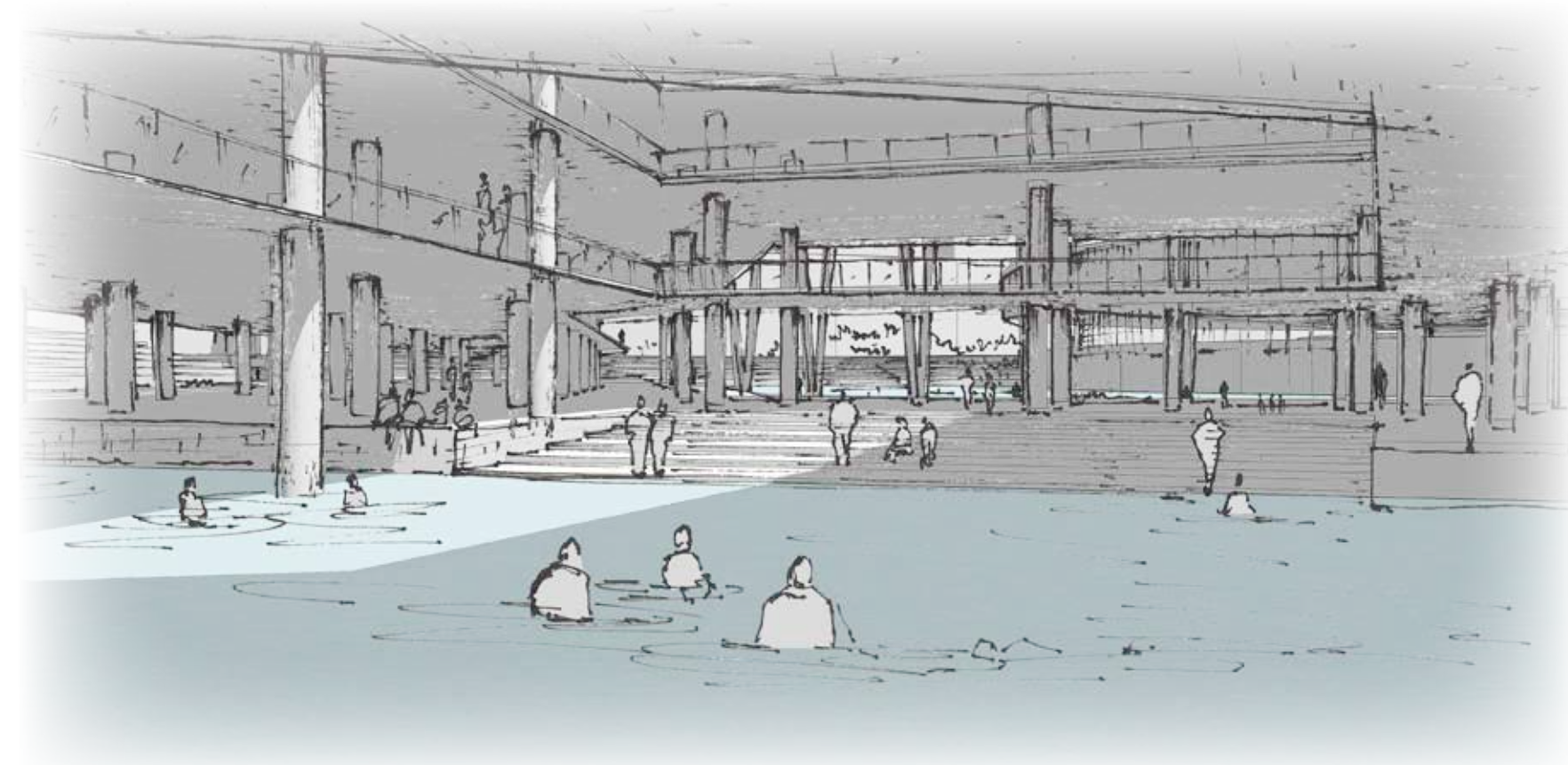
SECTION CC'



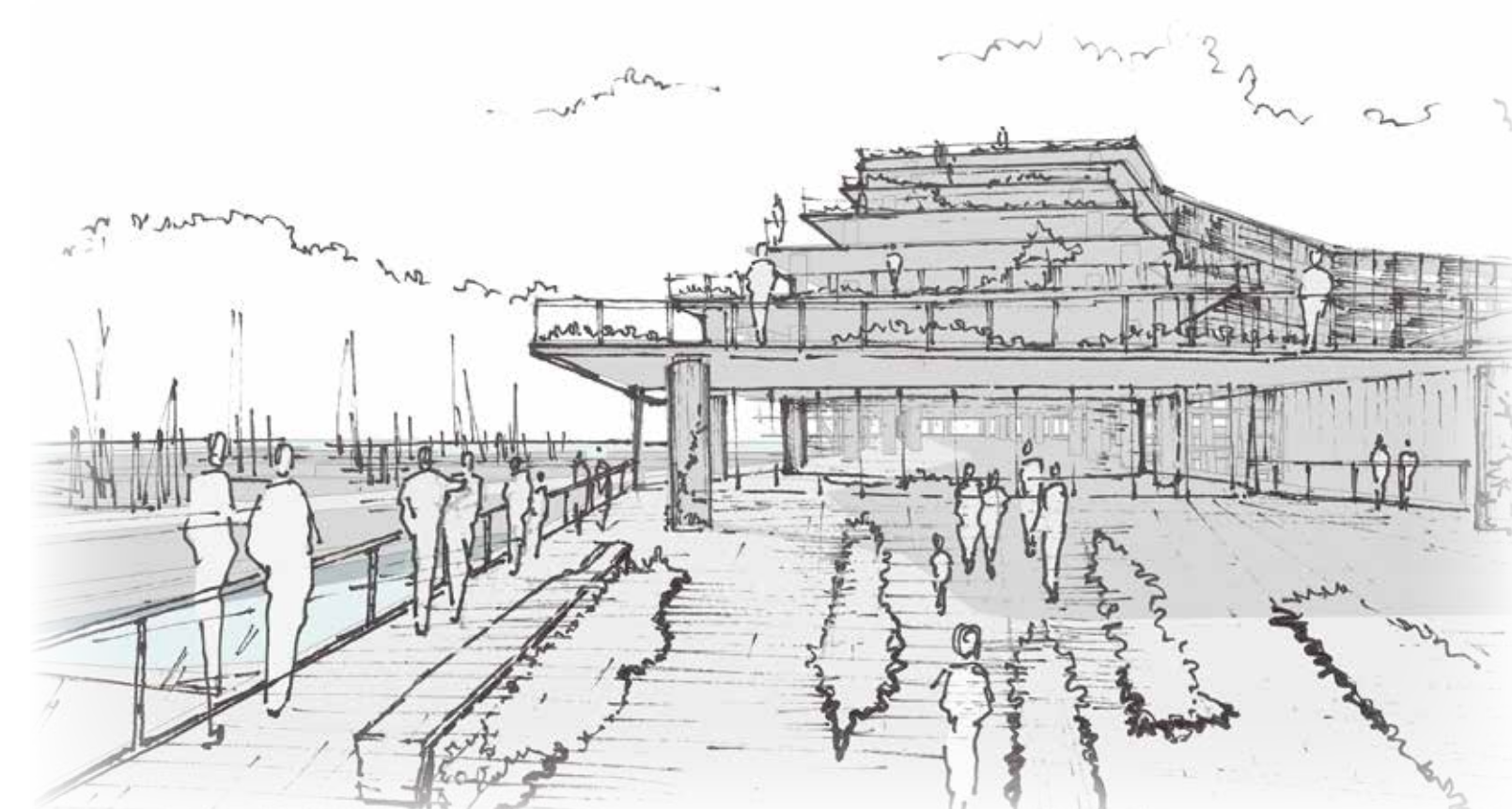
SECTION DD'



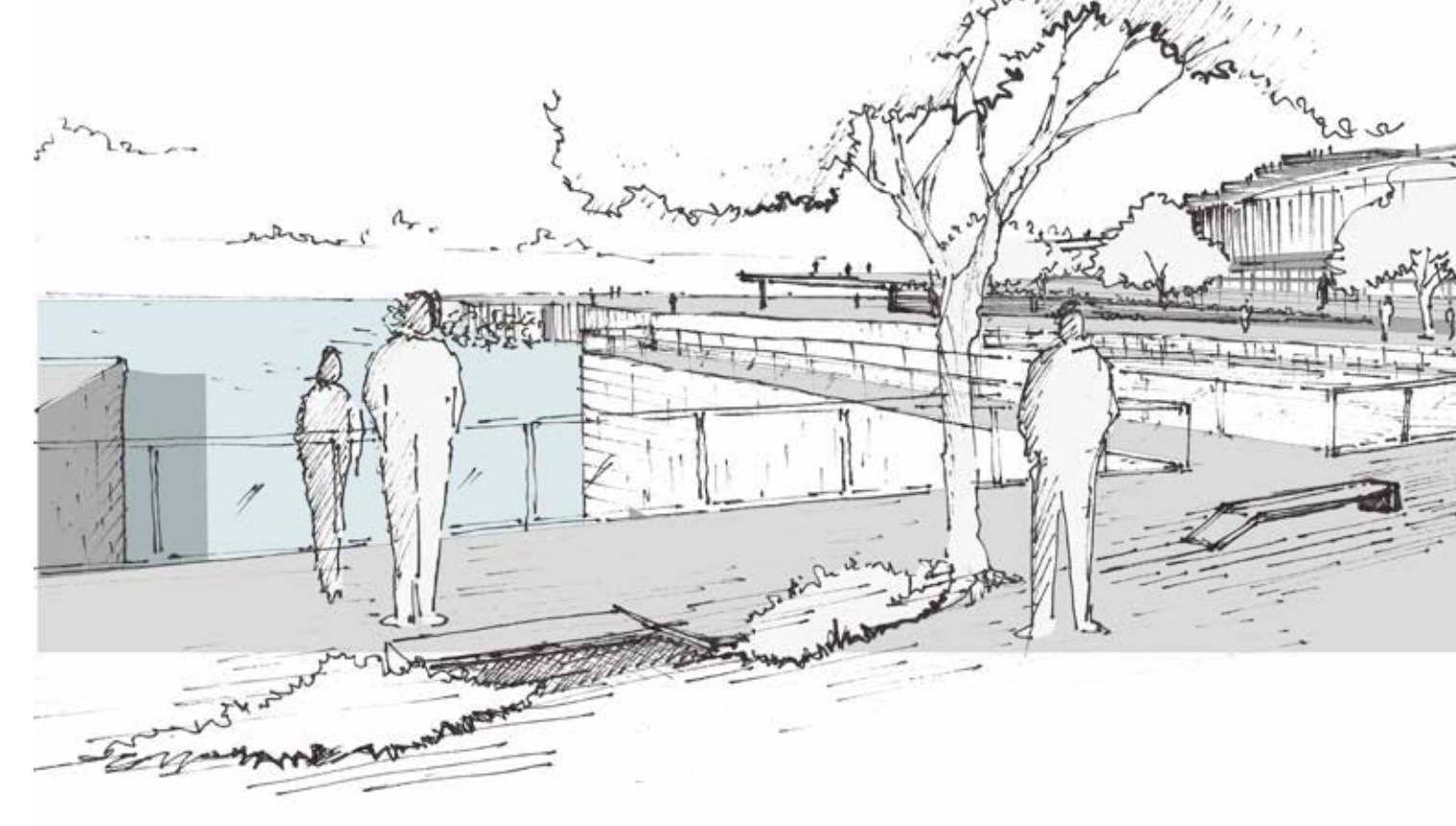
ROOF PLAN 1:1000



Swimming area below Hotel lobby



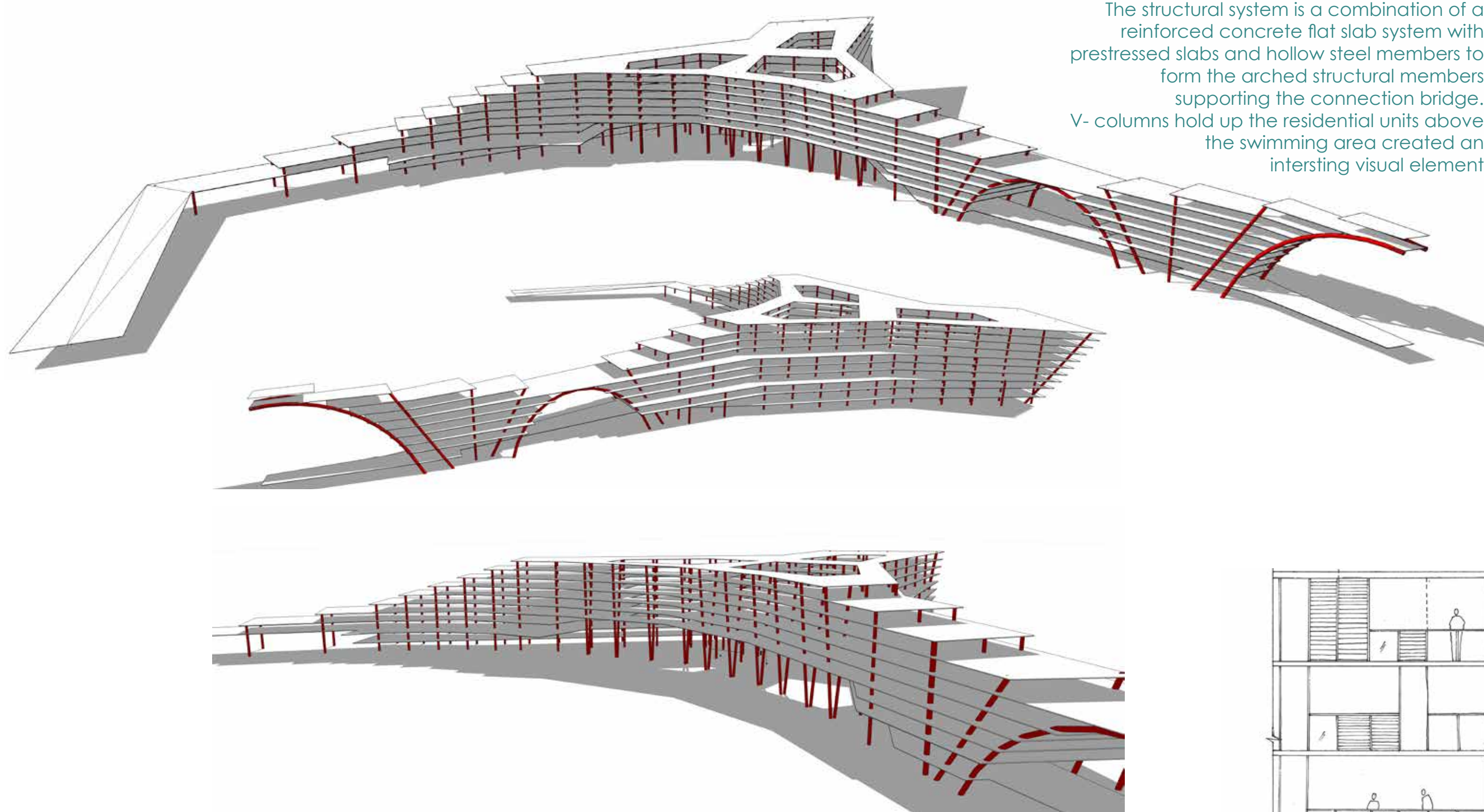
Terrace garden decks overlooking the sea



Shaded seating overlooking the River Bisagno

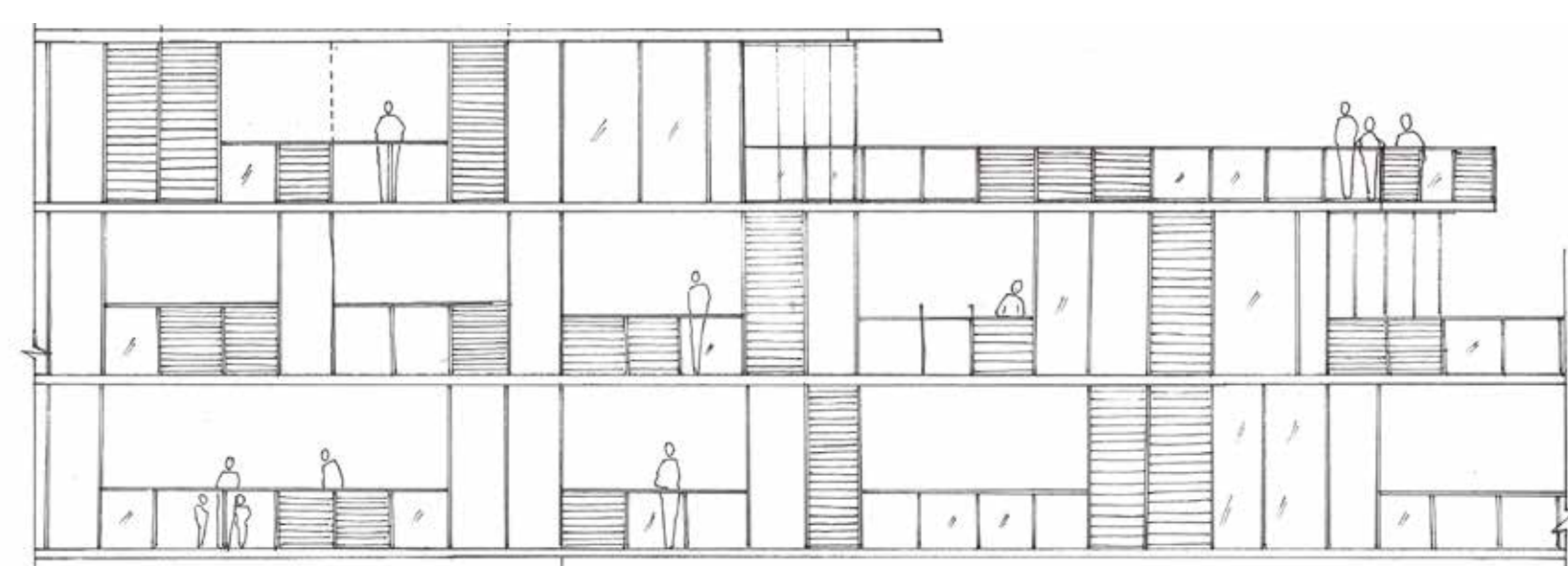
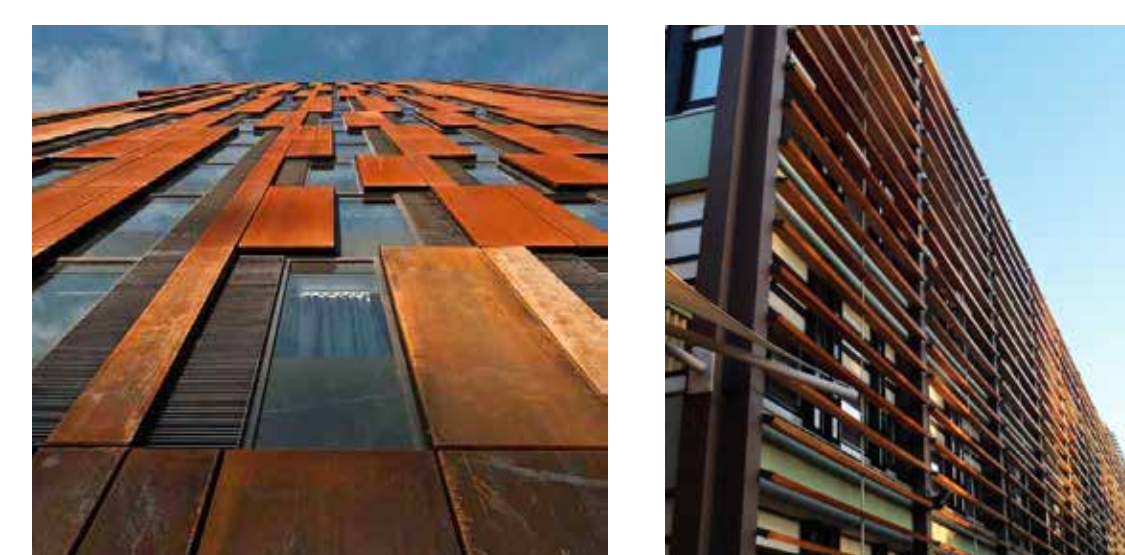
STRUCTURAL SYSTEM

The structural system is a combination of a reinforced concrete flat slab system with prestressed slabs and hollow steel members to form the arched structural members supporting the connection bridge. V- columns hold up the residential units above the swimming area created an interesting visual element

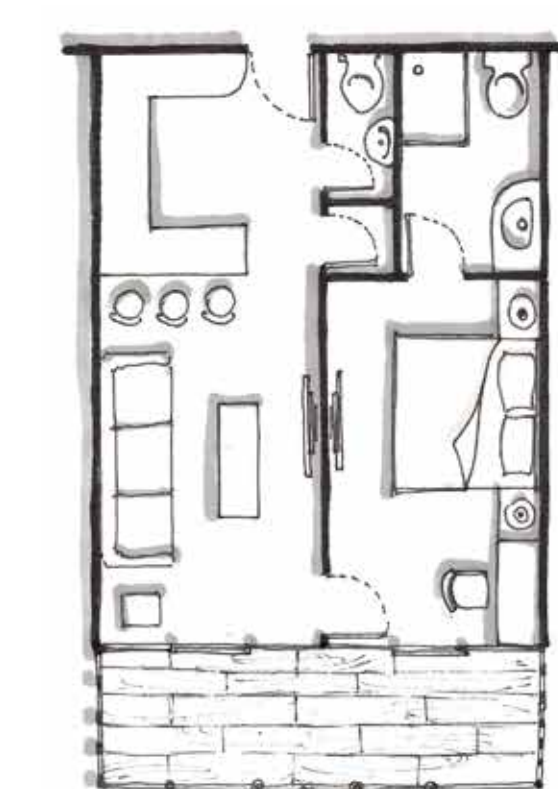


FACADE DESIGN

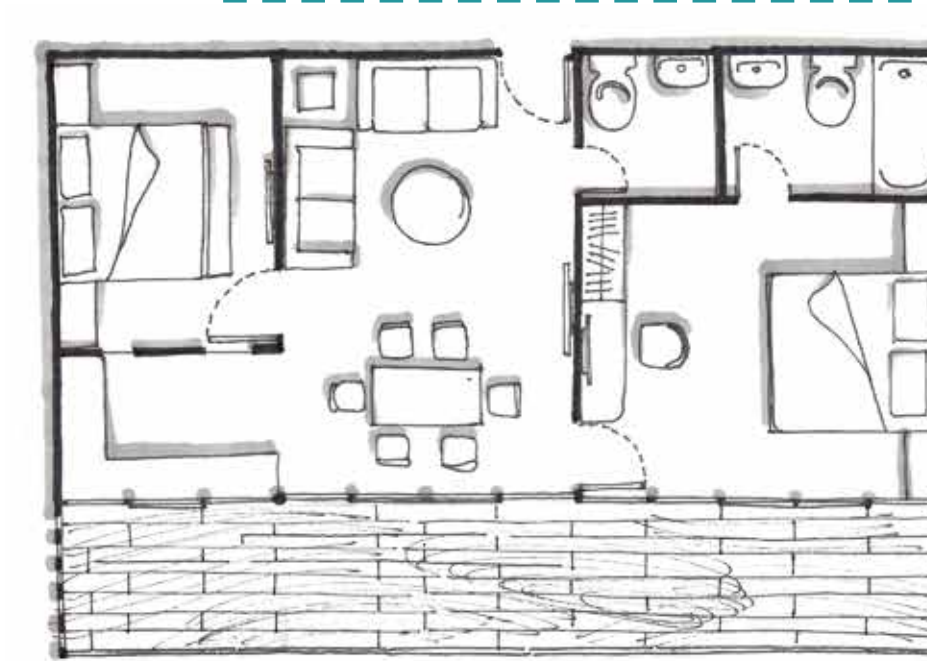
The facade is based on a double skin system of cladding where the inner skin is glass and the external is a combination of Corten (Weathering steel) and cement fibre boards finished to resemble wood panels. Depending on the orientation of the interior space, the external facade will have dense shading if it faces the southern and south western sunlight while it will have lighter shading elements if it faces north. These wooden panels would be assembled into louvre system adjustable by the owner.



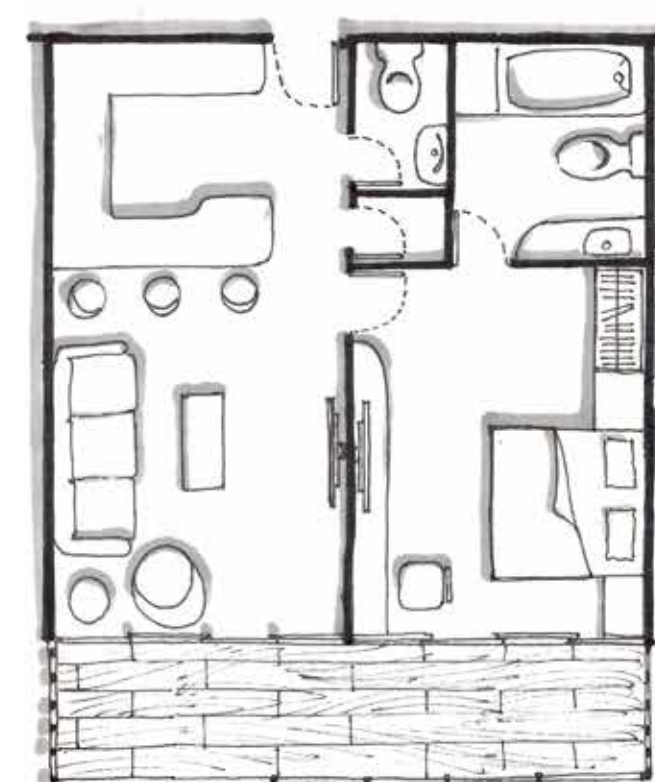
ROOM LAYOUTS



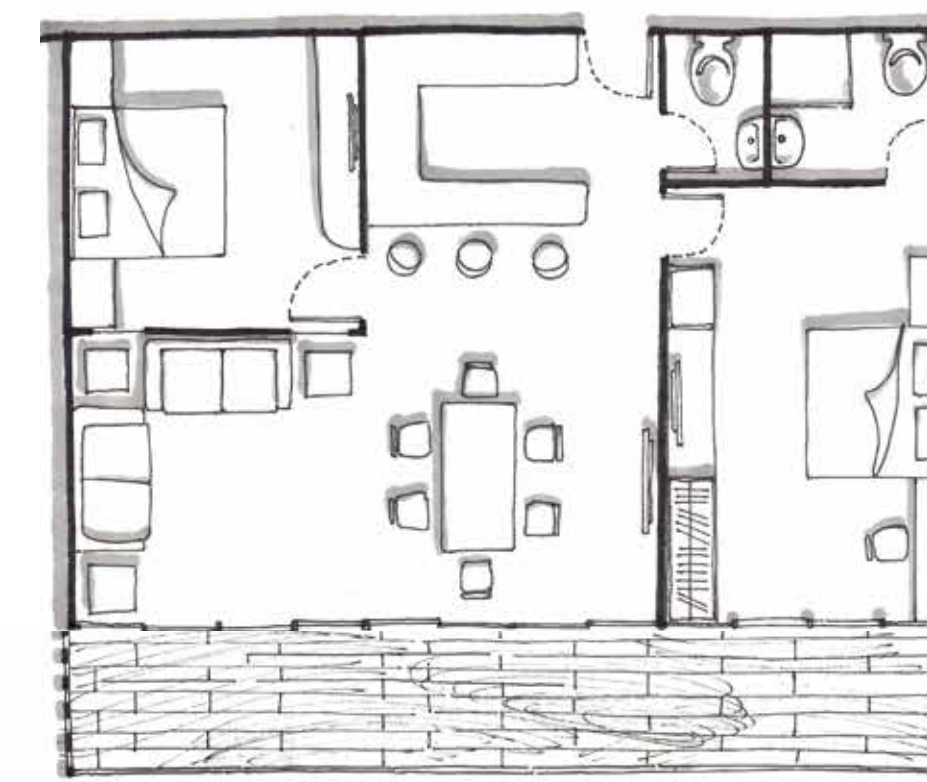
Typical 6.0m x 8.0m room layout



Typical 12.0m x 6.0m room layout

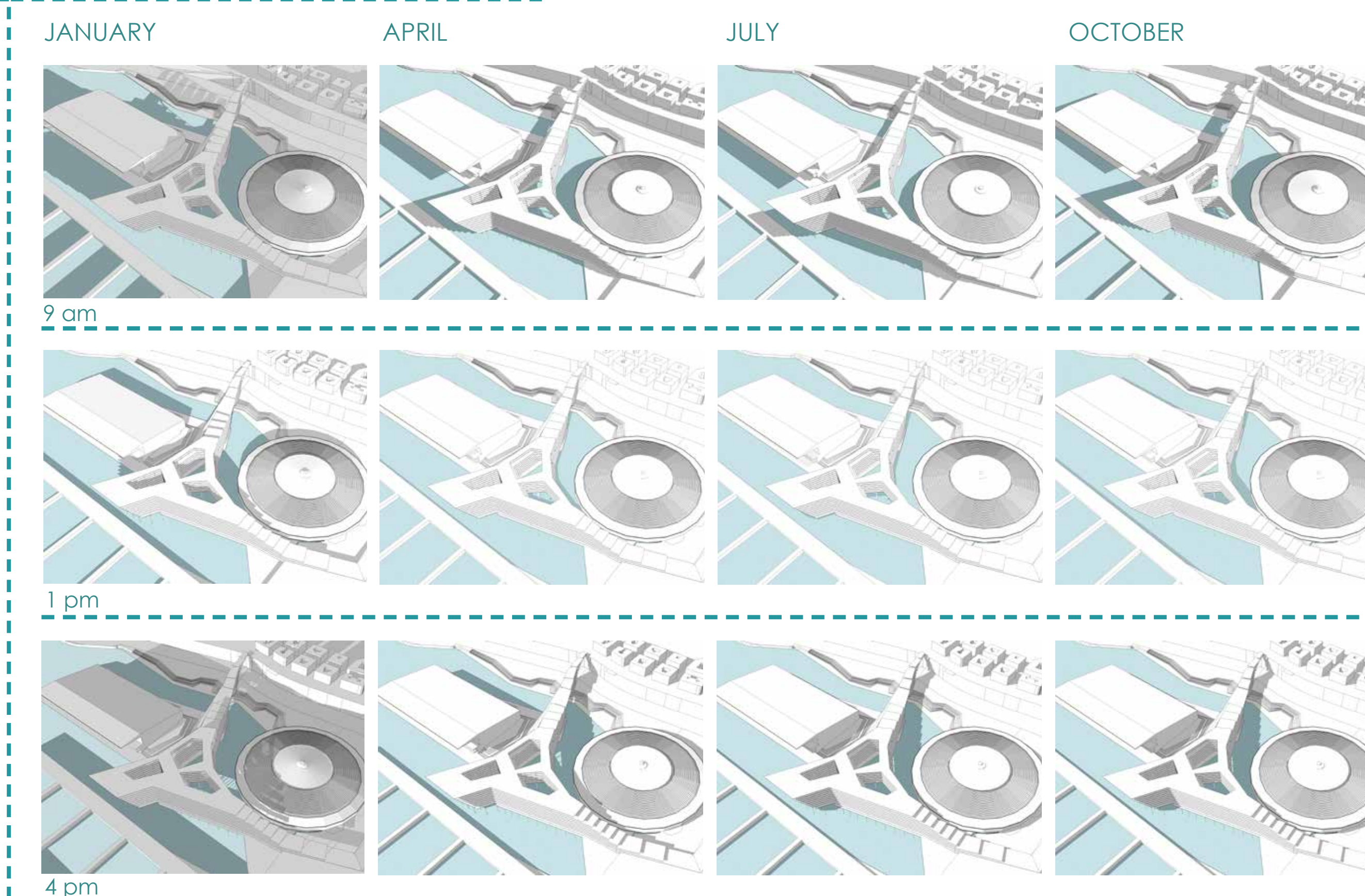


Typical 8.0m x 8.0m room layout



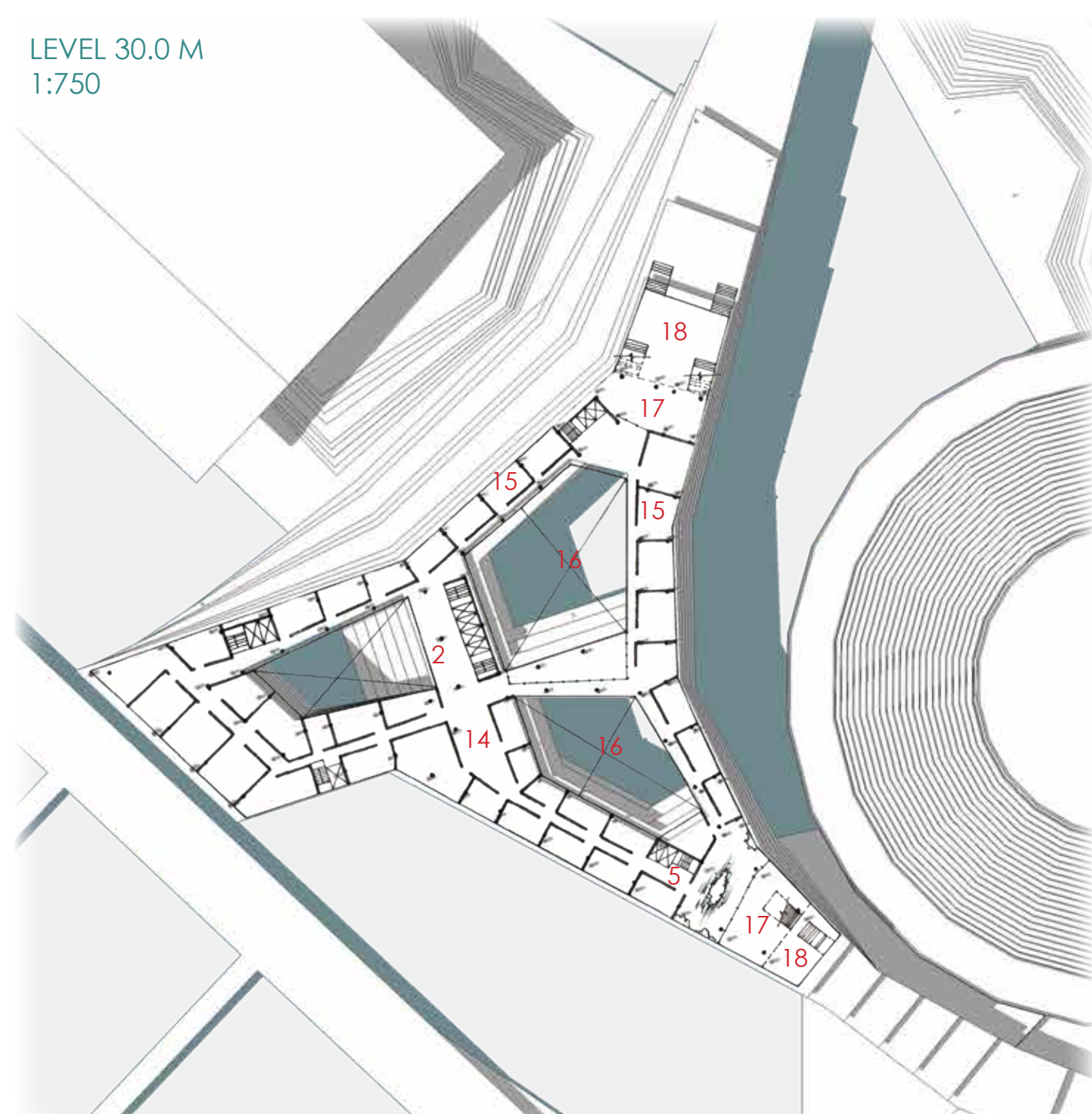
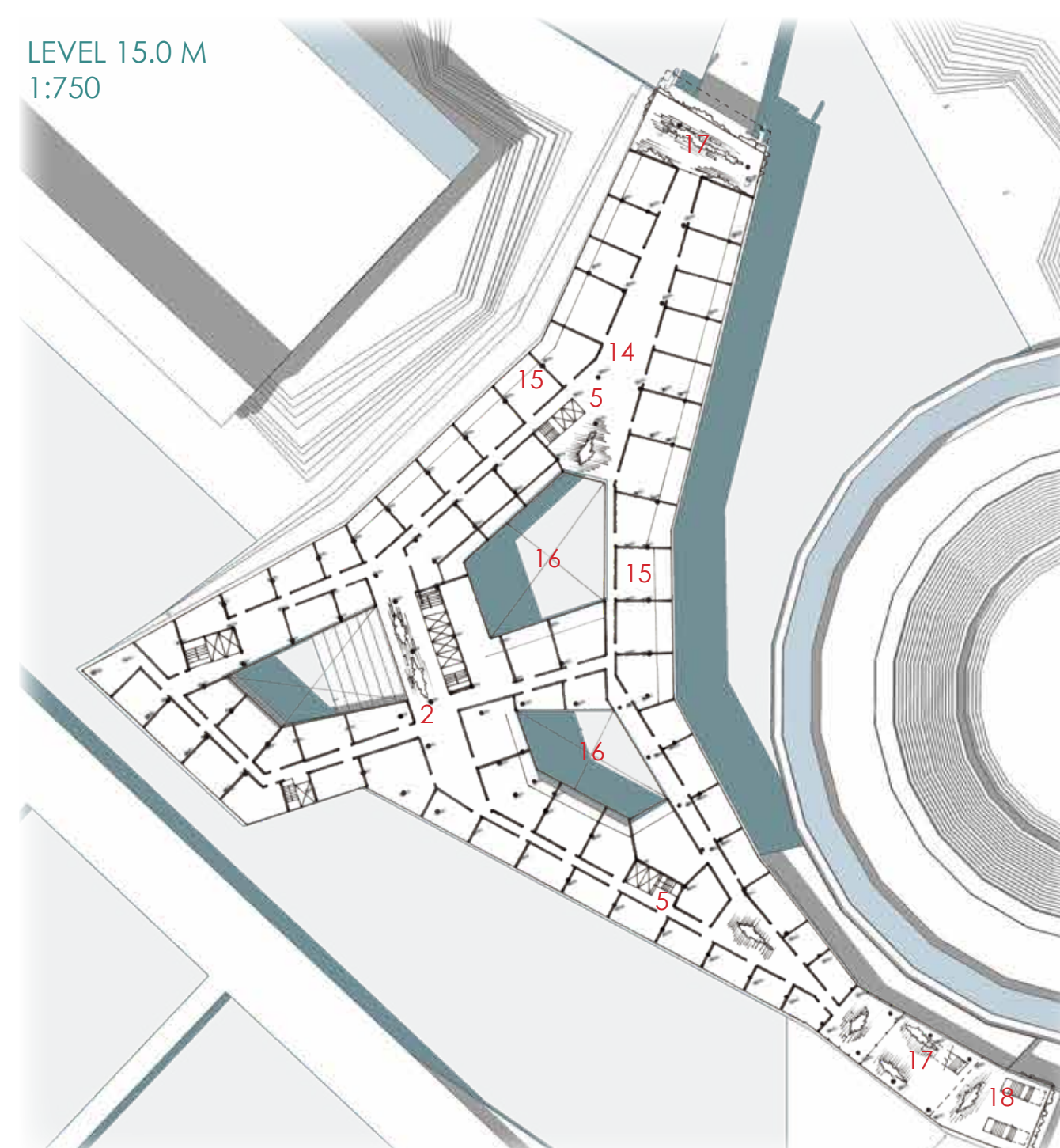
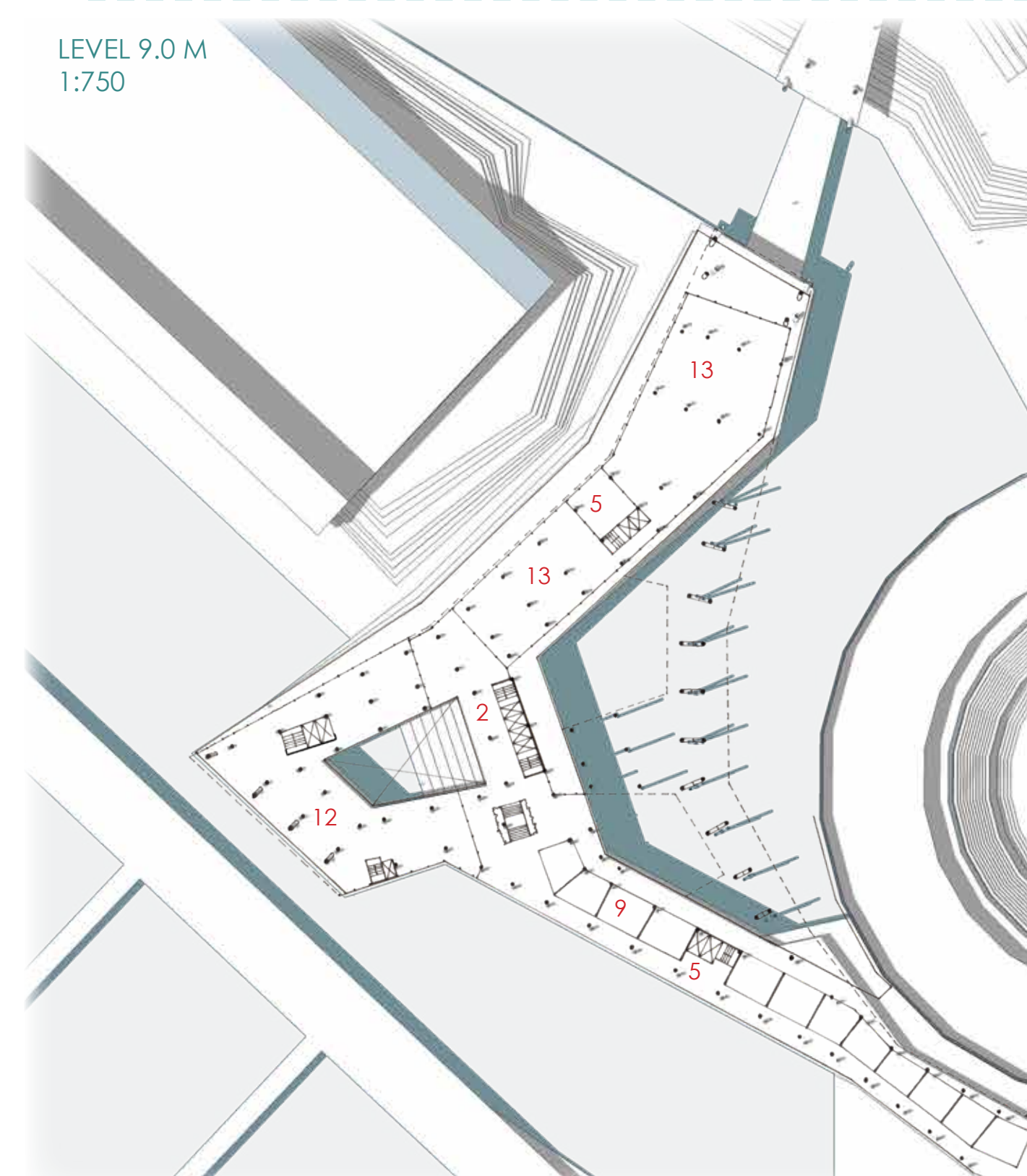
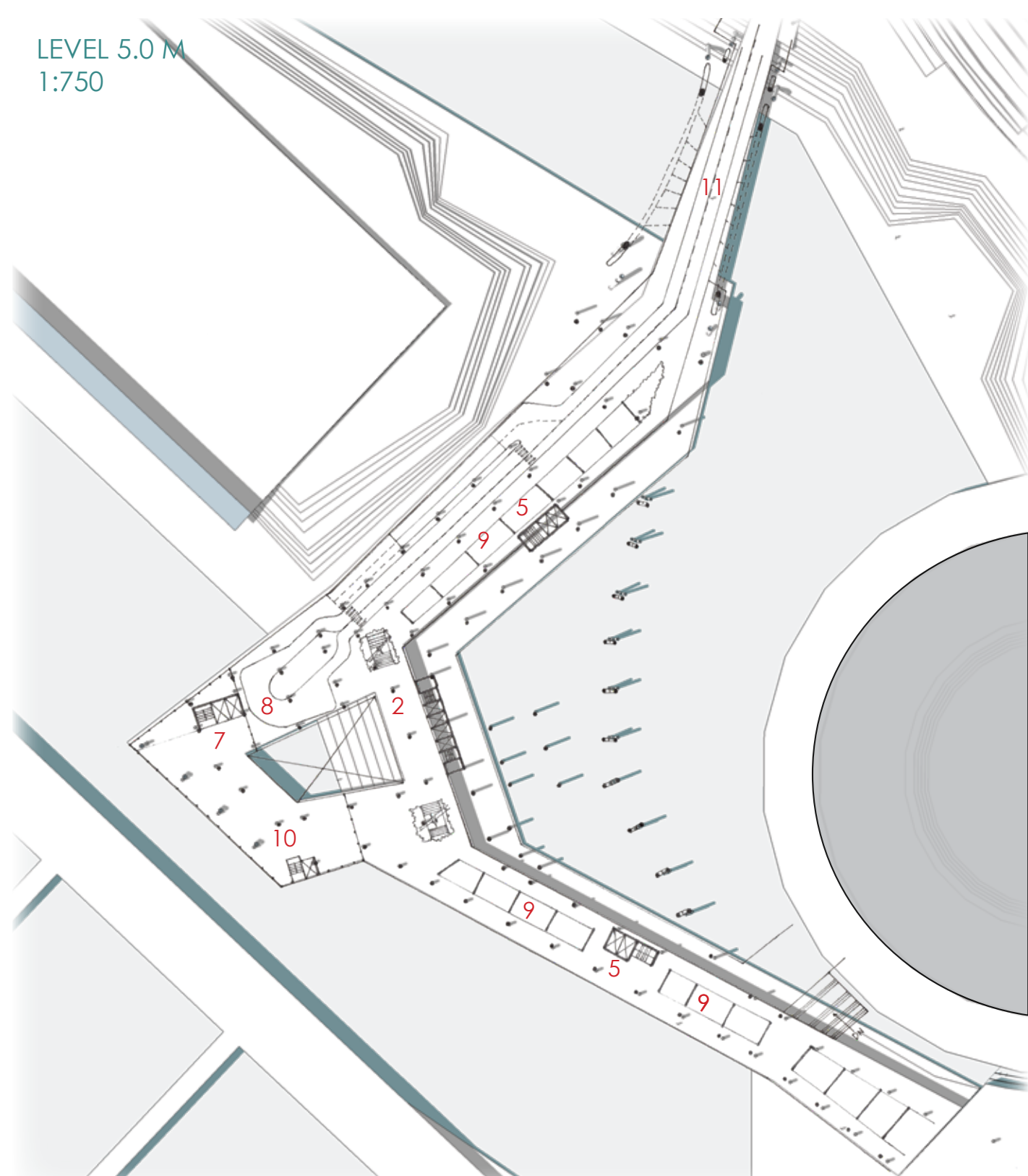
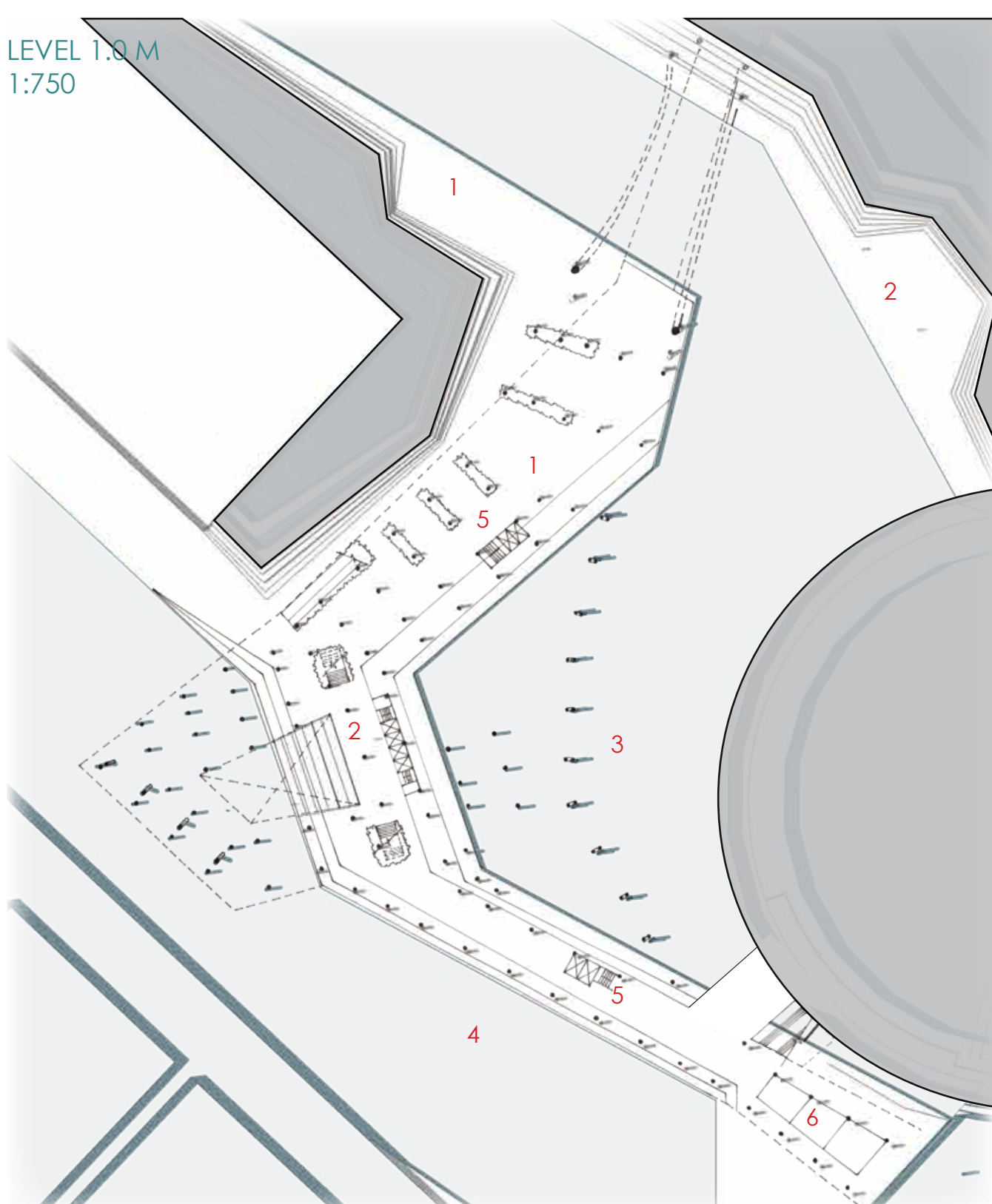
Typical 12.0m x 8.0m room layout

SUN STUDY



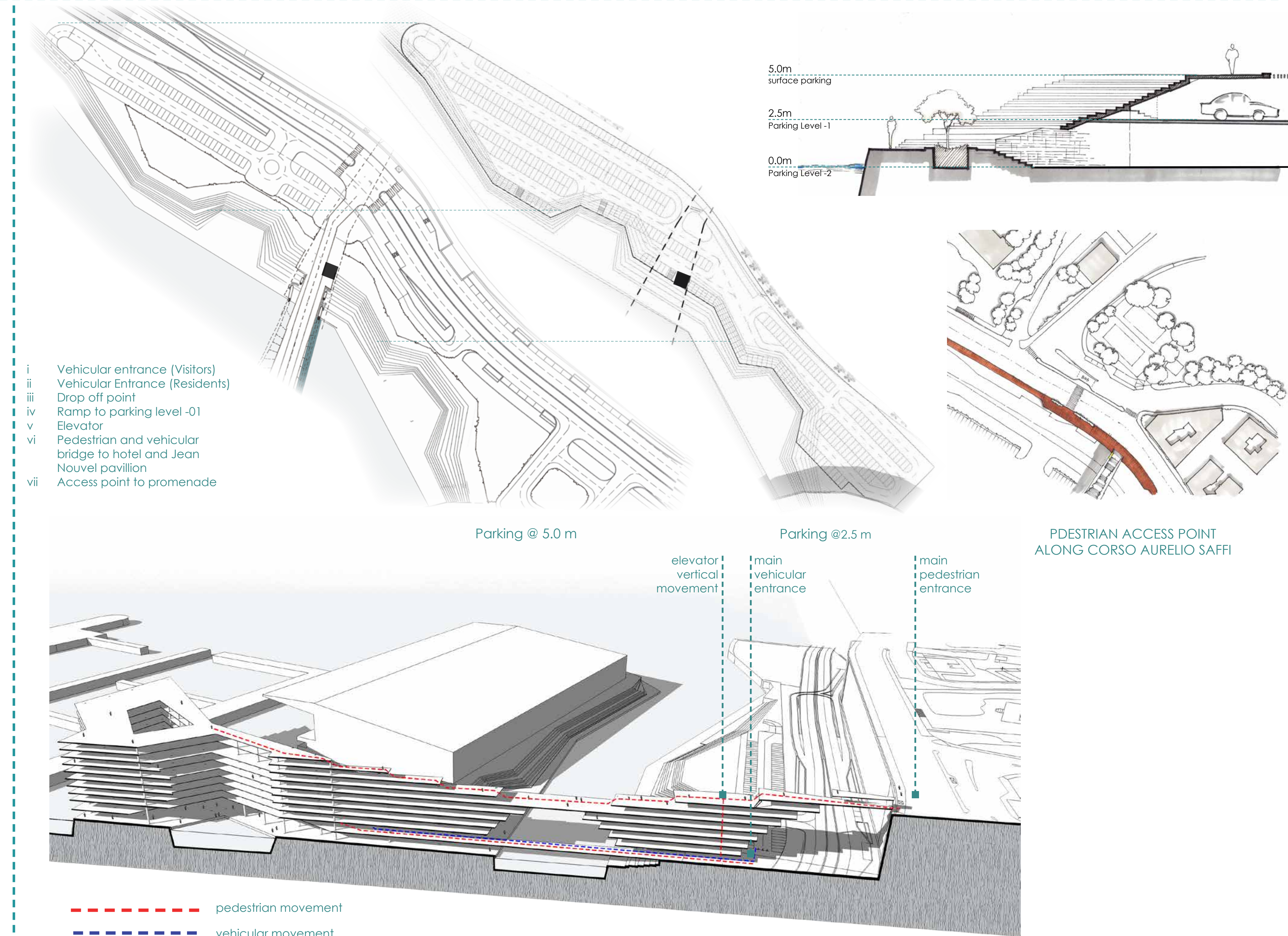
DETAILED LAYOUTS

PARKING LAYOUTS



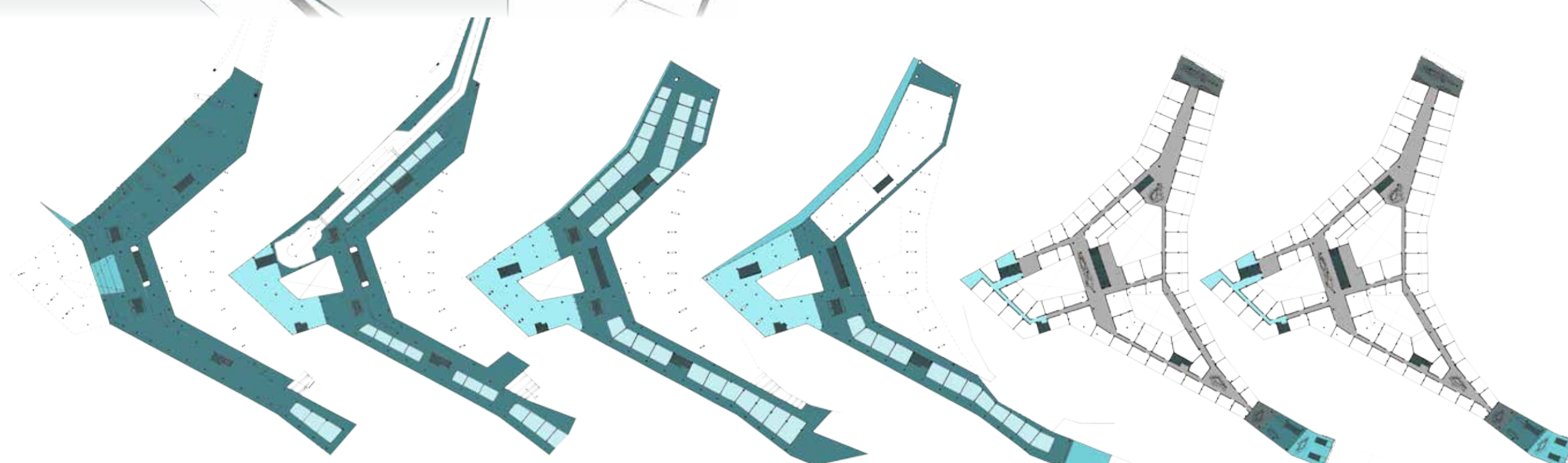
LEGEND

- 1 Public promenade
- 2 Main lobby
- 3 Summer swimming area
- 4 Winter swimming area
- 5 Circulation cores
- 6 Swimming facilities
- 7 Hotel lobby
- 8 Hotel driveway
- 9 Commercial outlets
- 10 Service core
- 11 Vehicular and pedestrian bridge
- 12 Hotel Restaurant
- 13 Office space
- 14 Corridors
- 15 Residential spaces
- 16 Water Courtyard
- 17 Shaded Public Deck
- 18 External Public Deck
- 19 Hotel Rooms



DIAGRAMS SHOWING CIRCULATION

- VERTICAL CIRCULATION
- PRIVATE DECKS
- PUBLIC CIRCULATION
- RESIDENTIAL CIRCULATION
- UNSHADED PUBLIC AREA
- HOTEL AREA
- COMMERCIAL AREA
- ROADWAY
- OFFICE AREA



DIAGRAMS SHOWING DIFFERENT ROOM TYPES

- LUXURY APARTMENTS
- LARGE APARTMENTS
- MEDIUM APARTMENTS
- SMALL APARTMENTS

