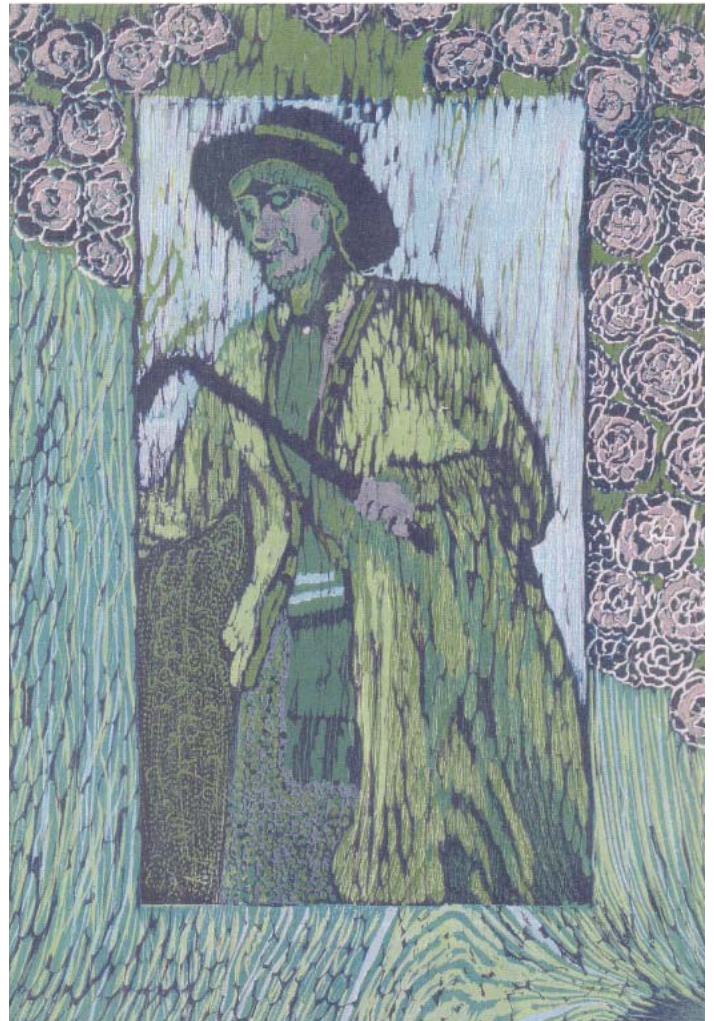


# Woolf and the Art of Exploration

Selected Papers from the  
Fifteenth International  
Conference on Virginia Woolf

*Edited by Helen Southworth and Elisa K. Sparks*



ISBN 0-9771263-8-2 Copyright 2006, Clemson University

The Fifteenth International Conference on Virginia Woolf took place at Lewis & Clark College, a small college in Portland, Oregon, on 9-12 June 2005. Coinciding with the bicentennial of Lewis and Clark's Expedition, the wide range of papers emphasized the adventurousness of Woolf's work. Nearly 30 essays were selected for publication that reflect her enterprising nature, with titles such as Cheryl Mares's "The Making of Virginia Woolf's America" and Emily Wittman's "The Decline and Fall of Rachel Vinrace: Reading Gibbon in Virginia Woolf's *The Voyage Out*." In addition to these, the selected papers include essays by Christina Alt, Alice D'Amore, Karin deWeille, Renee Dickinson, Elizabeth Evans, Diane Gillespie, Mollie Godfrey, Joanna Grant, Benjamin Harvey, Sally Jacobsen, Joyce Kelley, Gill Lowe, Katie Macnamara, Eleanor McNeese, Ayako Muneuchi, Robert Reginio, Kathryn Louise Simpson, and Kelly Sultzbach. Chapter titles include Exploring: Woolf's Life, London's Spaces, Nature, Foreign Lands, Art and Empire, and Cultural Origins & Contexts.

---

## WOOLF AND THE ART OF EXPLORATION

ORDER FORM (Make checks payable, in \$U.S., to "Clemson University" and send with form to: Director, Center for Electronic and Digital Publishing, 611 Strode Tower, Clemson University, Clemson, SC 29634-0522, U.S.A.)

Quantity: \_\_\_\_\_ x \$19.95  
Subtotal: \_\_\_\_\_  
Shipping: \_\_\_\_\_ (\$2 x Quantity)  
Total: \_\_\_\_\_

Name: \_\_\_\_\_  
Address: \_\_\_\_\_  
Country: \_\_\_\_\_  
Telephone: \_\_\_\_\_ E-mail: \_\_\_\_\_