



President's Message

Dear OLLI Members,

Yes, we have news!

For the last two years, Dr. Fran McGuire has been ably wearing two hats, that of our OLLI Interim Director and that of OLLI/Clemson Faculty Liaison, while still doing his "real job" as a Distinguished Professor in the PRTM Department of Clemson University. Fran has spent countless volunteer hours working with the OLLI Staff, with the Board, with the Osher Foundation, and with the University helping guide OLLI's course to success and working to solve its problems. I respect and admire Fran tremendously, and enjoy and appreciate working with him. He has done wonders for OLLI since its beginning. However, we have all recognized that his "real job" time commitments keep growing and expanding, that he is over-stretched, and that OLLI needs a dedicated professional Director.



It's a real pleasure to write to you that Dr. Patricia Smart has agreed to become our new OLLI Director on a part-time basis this year, with expanded time planned for the future. Pat has been a member of the OLLI Board for many years so she is familiar with our organization. She is Assistant to the President, Special Assistant as Faculty Liaison to the Provost, and Professor at Clemson University. Her resume of accomplishments is only seven pages long! She has arranged a split of her time between her work for the Provost and President, teaching at the School of Nursing, and as OLLI Director that will be of real benefit to us. In addition, Fran McGuire has promised to work closely with Pat during this transition year while continuing to wear his OLLI/Clemson Faculty Liaison hat. Please introduce yourself and welcome Dr. Pat Smart when you see her at members' meetings, committee meetings, or OLLI classes. We are extremely fortunate!

I also want to introduce the new Chair of our Membership Committee, Mary Etten. Mary is a graduate Electrical Engineer and worked at Knolls Atomic Power Laboratory in NY State. She and her husband are retired and live in Seneca. They have four sons, one of them a student at Clemson. Mary replaces Bill Bridwell who has moved to the Curriculum Committee as co-Chair with Eleanor McCallum. Eleanor will be stepping down shortly because of her husband's health with Bill taking over. We owe Eleanor a great deal of gratitude for the incredible job she has done the past two years with her committee in making our OLLI's curriculum attractive, varied and vibrant. Thank you Eleanor!

And that's the news from Lakes Hartwell and Keowee, no longer looking woebegone, where all our OLLI students are not just above average, but brilliant! (Ouch, sorry!)

Ed Krech,
OLLI Board President

OLLI BOARD

Ed Krech, President
Jim Hannon, Vice President
Bill Bridwell,
Curriculum Committee Co-Chair
Mary Etten,
Membership Committee Chair
Don Fuller,
Long Range Planning Chair
Ruth Henahan,
Administration & Governance Chair
Eleanor McCallum,
Curriculum Committee Co-Chair
Karen Stimart,
Building Committee Chair
Judy Wilkinson, Member at large
Greg Lucas, Member at Large

EX-OFFICIO MEMBERS

Fran McGuire,
Director and PRTM Liaison
Dan Anderson, PRTM Liaison
Pat Smart,
Clemson University Liaison
Joan Pettigrew, OLLI Coordinator
Amanda Turner, OLLI Coordinator
Tracy Mainieri,
Assistant to the Director

Department of Parks, Recreation and
Tourism Management
Clemson University
287B Lehotsky Hall
Box 340738
Clemson, SC 29634-0738

Phone: (864) 656-6912
Fax: (864) 656-1529
Web site: WWW.CLEMSON.EDU/OLLI
Email: OLLI@CLEMSON.EDU

Letter from the Director

Greetings from OLLI at Clemson. We are heading into our fall semester and the classes lined up for you by our curriculum committee are as exciting and challenging as we have offered at any time. Our membership numbers are at the highest they have ever been. The number of volunteers contributing their time and talents to OLLI continue to grow every semester and would make us the envy of any organization built on the largesse of its members. In short, it is a great time for OLLI!

It is also a time of change. I have served as the interim director of this marvelous organization for the past two years and it has been a pleasure to do so. However, there comes a time when change is good and fresh ideas are needed. I am turning over the leadership of OLLI to Dr. Pat Smart, a friend and fellow professor at Clemson University. Although I will continue to serve OLLI by remaining on the Board as the Clemson University Liaison to OLLI, Pat will serve as OLLI director.



I remember many years ago when I was a student at Our Lady of Sorrows Elementary School in South Orange, New Jersey, the Catholic Church was engaged in a period of self-examination, led by Pope John XXIII, and I first heard the word *adjournamento* (at least that is the word I remember although a Google search leads me to believe the actual spelling may be *aggiornamento*), the act of opening the windows to let in fresh air. I think now is a good time for *adjournamento* in OLLI.

I recall our humble beginnings, instigated by Don Fuller. He came to me with an outrageous proposal: Clemson University would provide lifelong learning opportunities to residents of the upstate and Clemson's program would be a model, second to none. He "opened the window" at Clemson and we all have benefited from the resulting fresh air that swept through Pickens and Oconee Counties.

Now is a good time for change. Our new building is on the horizon, at least figuratively. We have a comprehensive long-term plan in place. We will soon bring to you for a vote proposed new by-laws for our Board. OLLI is poised to enter a new phase in its development and fresh perspectives are needed as we move forward and broaden our horizons.

We have accomplished much in the past nine years, and our successes will continue into the future. I would like to thank all of those who have been instrumental in our success. The Bernard Osher Foundation's commitment to lifelong learning has been crucial. The work of the dedicated OLLI staff has provided the scaffolding necessary to build OLLI. Our generous volunteers have magnified our resources and allowed us to do much more than seemed possible. Clemson University has housed us, nurtured us and provided guidance as we have grown. And finally, our members have motivated us and molded OLLI into the kind of program Don Fuller envisioned nearly a decade ago.

Thank you all for all you do for OLLI and in keeping with our Italian theme, *ciao!*

Fran McGuire,
Interim Director

Don't Miss OLLI's "Kick Off" Of The Fall 2009 Season!

Mark your calendars for Friday, August 28th from 10 to noon, and team up with OLLI as we take the field for our Fall 2009 season. The informative and fun event takes place in Pastor's Hall, Seneca Presbyterian Church, 115 W. South First Street, Seneca, SC.

While greeting fellow members and meeting other lifelong learners, you will also enjoy:

- Meeting and chatting with fall course instructors
- Talking to OLLI Board and Committee Members
- Looking over the 90+ fall courses and registering for favorites
- Learning more about the 7 educational excursions being offered
- Reviewing the many benefits that come with an OLLI membership
- Joining OLLI if you haven't already done so
- Hearing an authentic Appalachian dulcimer
- Partaking in refreshments and opportunities to socialize



Help OLLI make this another winning season! We hope to see you there.

- Lanny Parson

Did You Know . . .

- OLLI members Carl & Muriel Bishop traveled to Luang Prabang, Laos in April of this year and took along the OLLI Banner
- OLLI instructor Fred Lee helped the OLLI members in his Maymester 2009 Speed Reading course to increase their reading speed by 117% along with increasing their comprehension rate by 50 % at the same time.
- OLLI member Jack Stevenson represented the Clemson University Emeritus College on the Pickens County United Way Allocation Team
- OLLI instructor Jerry Alexander was featured in the commentary to the PBS show "The Last One" which aired originally on Nov 24, 2008 and aired several times again this past July

- Joan Pettigrew

In Memory Of Jerry



Jerry Waldvogel was an instructor for the Osher Lifelong Learning Institute (OLLI) at Clemson University. He voluntarily shared his knowledge and expertise with our members as the instructor for OLLI's *Current Topics In Energy* courses. Jerry taught in Spring 2008, Fall 2008, and Spring 2009 sessions. He was scheduled to teach again in the Fall 2009 session before he passed away May 30th of this year. His kindness and generosity will be missed.

- Joan Pettigrew

Meet Mary Anne. Wolthuis

Born in Kalamazoo, MI just a few years ago, Mary Anne Wolthuis grew up in a predominately Dutch community with one sister and one brother. After graduating in nursing, Mary Anne married Dick, had three children and eventually found her way south in 1988. Having obtained a Masters in Nursing Education, Mary Anne taught at Tri County Tech from 1988-1997. Around this time Dick accepted a job as general manager of operations for a company in Shanghai,



China. Kicking and screaming all the way, Mary Anne gave up her career in nursing, the relationship with her daughter who was in college at UGA and the camaraderie with her large, black Labrador retriever, Holly, so that she could join her husband.

While Dick was busy growing the company, Mary Anne learned to speak Chinese in an effort to learn more about the culture of the people she began to know and love. When friends and relatives came to visit, it was Mary Anne who led the tours in China; Beijing, Shanghai, Xian, and Guilin were just a few of the places they went. In 2001, Mary Anne reluctantly returned to the US when Dick's job in China was completed. To sustain the friendships made, to reinforce her love of the culture and diet and to retain her speaking ability, Mary Anne continues to take groups to China. I enjoyed every minute of our 15 day trip in 2006. It would **not** be a place to go without an interpreter. So now Mary Anne has joined the rank of OLLI instructor. Last fall she taught a preview class for the Atlanta trip to view the terra cotta soldiers. Are there more classes on the horizon for this talented, personable, intelligent lady? We will all watch future catalogs for courses lead by Mary Anne Wolthuis!

- Kathy McGee

New, Used, and Remainders



McClure's Bookshop, LLC in Clemson is owned and operated by the Kathi McClure and her husband. Moving to Clemson and opening the bookstore was a long journey. In 1995, the McClures found themselves with an "empty nest". Still working, Kathi was commuting 3 hours to Hofstra University and her husband 4 hours to New York City. So they started to investigate what they wanted to do with the rest of their lives and where they wanted to be. Choosing to be near their daughter, they drew a circle on a map denoting a 2-hour drive and cross-referenced that with university and college towns. That

left many towns to investigate, but each time they looked, they came back to Clemson, the small university town. Books have always been a love for Kathi so a book store seemed to be the logical choice.

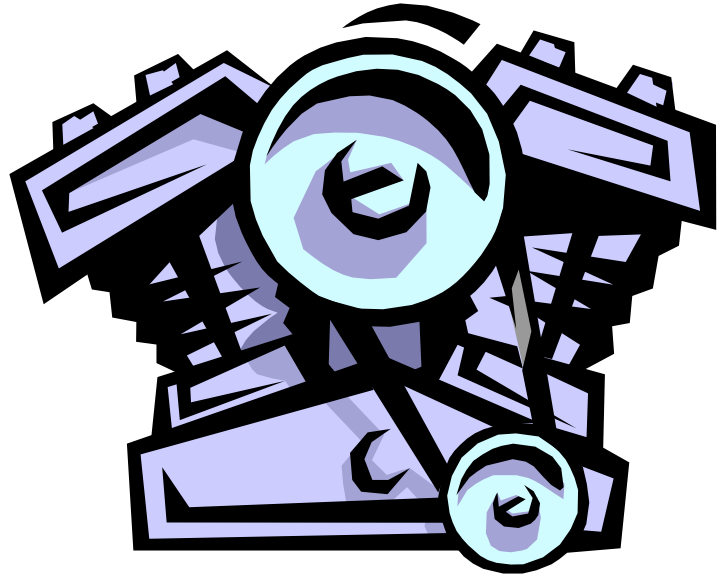
McClure's Bookshop opened in March 2005 housed in their current location at 100 McCollum Street. The bookshop sells new, used, and remainders (publisher's overstocks that have never been read). New books can always be ordered and usually arrive in 2 – 3 days. In addition to the rows of bookshelves with the usual selection of topics, there are two special rooms: a 'War Room' and a 'Children's Room'. The 'Children's Room' has an area complete with toys for the younger set, a young adult area, and a teacher resource shelf. McClure's Bookshop also offers a unique program buying used books from their customers. If a used book is accepted, the customer earns a 50% store credit or 25% cash based on the book's value.

McClure's Bookshop first became an OLLI member benefit merchant in the 2008-2009 academic year and offers a 15% discount off any purchase.

-Mary Etten

Car Care in the Age of Self-Service

Remember the days of the neighborhood gas station, where that “tiger in your tank” was delivered with a smile by “the man with the star”? For many of us, upon receiving that coveted drivers’ license, the responsibility of getting the car gassed up and checked out was our introduction to the importance of regular car maintenance. Tires, oil, batteries and water were checked with every fill-up and auto repair was completed with honesty and a sense of personal care. There may not have been a computer under the hood, but there was a capable and competent mechanic who could find the problem and fix it.



Those times are gone and we are driving machines that have computers that are more sophisticated than those in the spacecraft that put a man on the moon forty years ago. We are now solely responsible for the continuing care of our sophisticated and technically advanced automobiles. Repairs can be a nightmare, costs can be outrageous, and integrity may be non-existent. Our state of frustration becomes exacerbated during tough economic times.

OLLI members, take heart! Pro Tune, located at 514 WN 1st. Street in Seneca, provides area residents with an opportunity to experience first class auto repair service at “real and reasonable” prices. In an age when auto repair may have a “bad rep” (and deservedly so), customers at Pro Tune will encounter a business whose owner and employees are “passionate” about customer service and believe that integrity is “doing the right thing no matter what.”

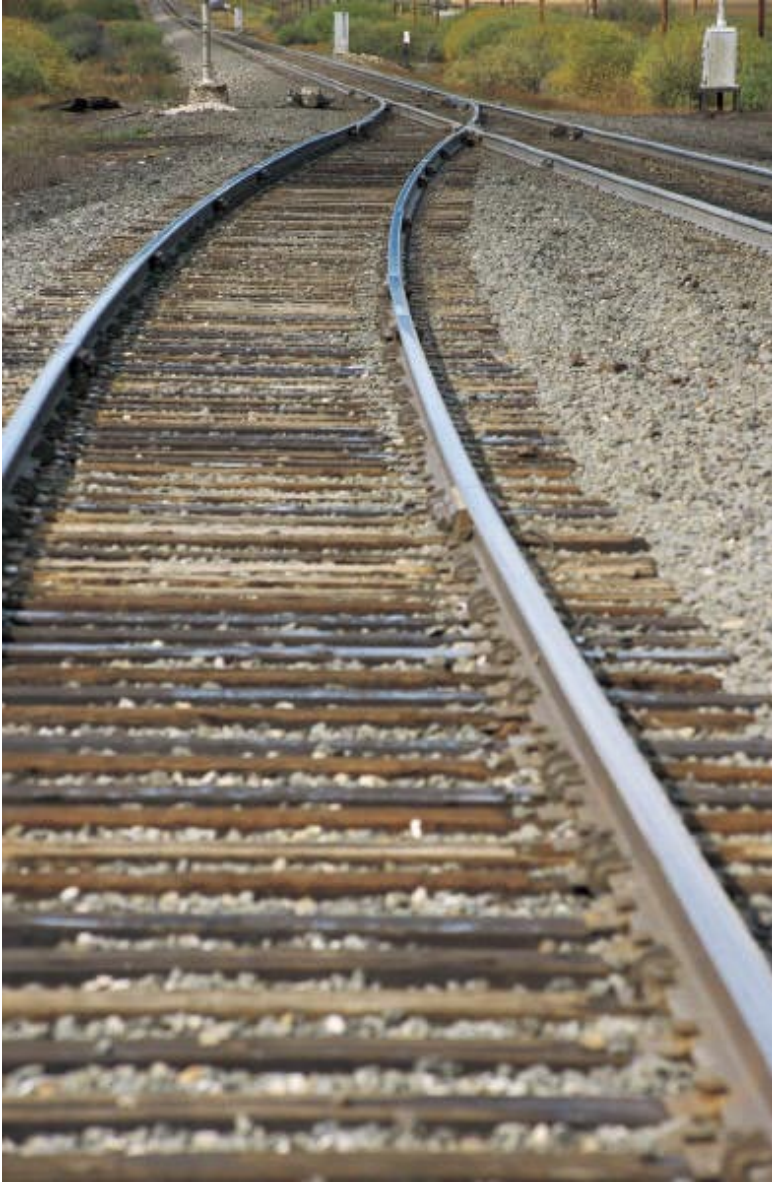
“Integrity” and “customer service” are the cornerstones of success for Pro Tune owner Glenn Kimbrell. An ASE certified automotive service consultant who received an Associate Degree in business management from Tri-County Tech, Glenn is joining the OLLI staff of instructors and conducting a new course this fall, *The ABC’s of Car Care in the Age of Self-Service*. The course will focus on routine maintenance that is critical to the smooth-running and long-life of a vehicle, and the avoidance of costly and unnecessary repairs.

Glenn is very excited about teaching for OLLI and having the opportunity to bring the importance of regular vehicle maintenance to area residents. A strong believer in continuing education for both his employees and his customers, Glenn always takes a personal approach to customer service. “We try to educate the customer on what we are doing and what they need to do.” Such an approach has gained him a dedicated clientele, 75% of which are repeat customers.

Join Glenn and his staff as they assist students in becoming knowledgeable about their own vehicles and ways to save costly repairs. You might not find a “tiger in your tank,” but through group instruction, professional demonstration and hands-on experience, you will definitely participate in a “star” performance. See you Saturday morning, September 19, at Pro-Tune.

- Joanna Steffes

Fascinating Fact About Railroad Tracks



The United States (US) standard railroad gauge (distance between the rails) is 4 feet, 8 1/2 inches. That's an exceedingly odd number.

Why was that gauge used? Because that's the way they built them in England, and English expatriates designed the US railroads.

Why did the English build them like that? Because the first rail lines were built by the same people who built the pre-railroad tramways, and that's the gauge they used.

Why did 'they' use that gauge then? Because the people who built the tramways used the same jigs and tools that they had used for building wagons, which used that wheel spacing.

Why did the wagons have that particular odd wheel spacing? Well, if they tried to use any other spacing, the wagon wheels would break on some of the old, long distance roads in England, because that's the spacing of the wheel ruts.

So who built those old rutted roads?

Imperial Rome built the first long distance roads in Europe (including England) for their legions. Those roads have been used ever since.

And the ruts in the roads? Roman war chariots formed the initial ruts, which everyone else had to match for fear of destroying their wagon wheels. Since the chariots were made for

Imperial Rome, they were all alike in the matter of wheel spacing. Therefore the United States standard railroad gauge of 4 feet, 8 1/2 inches is derived from the original specifications for an Imperial Roman war chariot which was made just wide enough to accommodate the rear ends of two war horses.

Now, the twist to the story: When you see a Space Shuttle sitting on its launch pad, there are two big booster rockets attached to the sides of the main fuel tank. These are solid rocket boosters, or SRBs. The SRBs are made by Thiokol at their factory in Utah. The engineers who designed the SRBs would have preferred to make them a bit fatter, but the SRBs had to be shipped by train from the factory to the launch site. The railroad line from the factory happens to run through a tunnel in the mountains, and the SRBs had to fit through that tunnel. The tunnel is slightly wider than the railroad track, and the railroad track, as you now know, is about as wide as two horses' rear ends.

So, a major Space Shuttle design feature of what is arguably the world's most advanced transportation system was determined over two thousand years ago.



Golden Corner Special Events Calendar

This page will feature events of special interest to our audiences from Anderson, Oconee, Pickens and Greenville County.

Clemson University

www.clemson.edu

Ice Age Beasts!

Bob Campbell Geology Museum

August 13, 2009

10 a.m. – 12 noon

Admission \$12

City of Clemson

www.cityofclemson.org

National Night Out

Clemson Police Department's 6th Annual

Catherine Smith Plaza

August 4, 2009

6 p.m. – 8 p.m.

www.clemson.edu/public/scbg

Nature of Quilts Exhibit

Dixie Haywood and Dottie Moore

Fran Hanson Discovery Center Gallery

August – September 2009

10 a.m. – 4 p.m.

Donation \$2

Easley

www.greenvillesymphony.org

Kenny and Friends featuring Kenneth Lambert,
violin

Summer Lollipops Concert

Hampton Memorial Library

August 4, 2009

10:30 a.m.

<http://easleychamber.net/>

Big League Baseball World Series

July 29 – August 5, 2009

JB "Red" Owens Recreational Park

Greenville

www.greenvillesymphony.org

Drum, Chavi, Drum featuring Sherwood Mobley,
percussion

Summer Lollipops Concert

Hughes Main Library

August 7, 2009

7 p.m.

www.carolinaballet.org

Bourbon BBQ & Ballet

Carolina Ballet Theatre

Greenville Country Club

August 27, 2009

6 p.m. – 10 p.m.

Pendleton

www.clemsonlittletheatre.com

The Nerd by Larry Shue

Clemson Little Theatre

July 31 – August 9, 2009

8 p.m., 3 p.m.

Adults \$15

College Students and Youth \$7

Pickens

www.southcarolinaparks.com

Music on the Mountain

August 8, 2009

2 p.m. – 8 p.m.

Adults \$2

Seniors \$1.25

Age 15 and Younger Free

Seneca

www.explorearts.org

CAST Campfire Tales & Square Dance

Oconee State Park

July 31, 2009

6:30 p.m. – 7:30 p.m.

Park Admission Fees Apply

Adults \$2

Seniors \$1.25

Under 16 Free

With Sincere Appreciation For Your Generosity

The OLLI Office Staff and OLLI Board would like to acknowledge and publicly thank the following members for their generous monetary donations to OLLI during the Maymester 2009 Session. Your generosity makes it possible for our institute to reach out to other "Seasoned Learners" in the Upstate area. Thank you.



OLLI donors were:

Betsy Burke	Jeanne Kates	Joan Steadman
Karen Culbertson	Betty Kirlin	Mark Steadman
Melba Doster	Hal Kuhn	John Vande Wege
Betty Duffield	Carolyn Lesley	Nan Vande Wege
Jane Hamilton	Jan Mudano	Beth Wilkinson
Karen Hansen	Susan Rach	Marty Winters
Jane Hughey		Ellen Zuercher

Nonprofit Organization
US Postage
PAID
Clemson, SC
Permit No. 10

Other Lifelong Learning
Institute at Clemson University
287B Lehotsky Hall
Box 340738
Clemson, SC 29634-0738

