

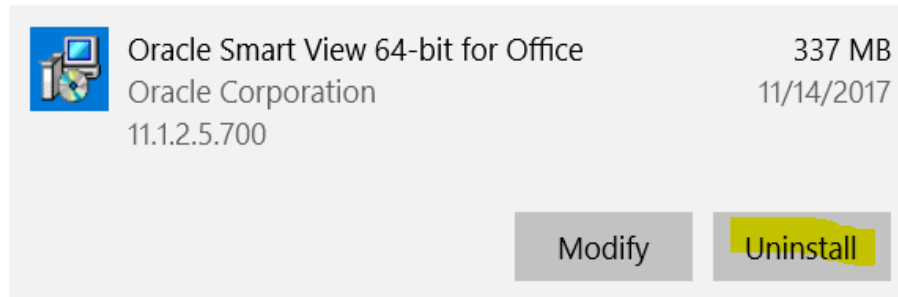
Hyperion SmartView Manual

Table of Contents

Installation Instructions	3
Option Button Settings	7
Button Description – PLANNING AD HOC	11
Button Description – SMART VIEW	13
Manipulation of Data	16
Sample Hierarchy	22

Installation Instructions

- First, verify no older versions exist and uninstall them if they do:
- Click the Start Menu and choose Settings. Choose Apps and check the list for Oracle Smart View 64-bit for Office or Oracle Smart View 32-bit for Office. Both of these should be uninstalled before proceeding.
- Click the item and choose Uninstall.

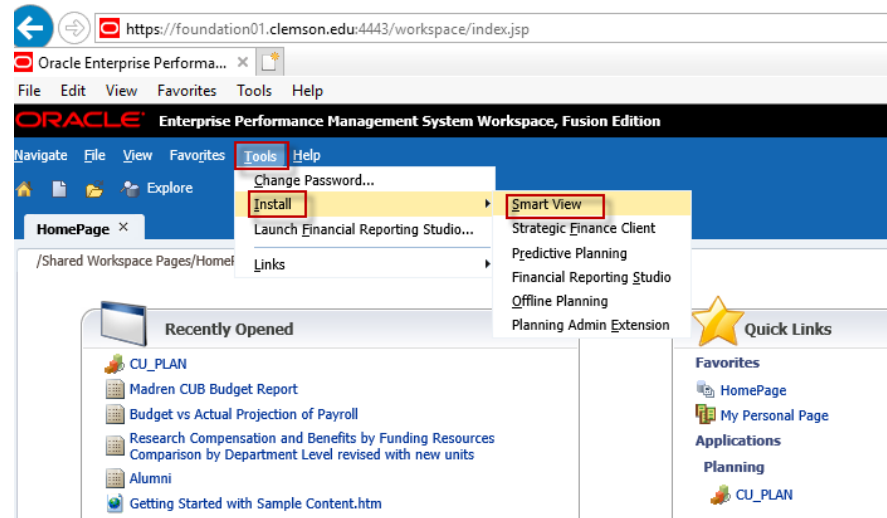


- Reboot your computer before proceeding.

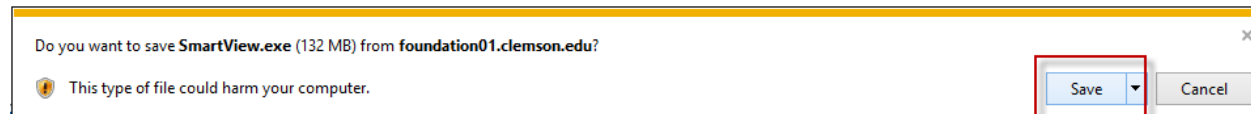
Installation Instructions (cont.)

To install the latest version of SmartView:

- Log into Hyperion at <https://foundation01.clemson.edu:4443/workspace/index.jsp>
- Click on Tools > Install > Smartview

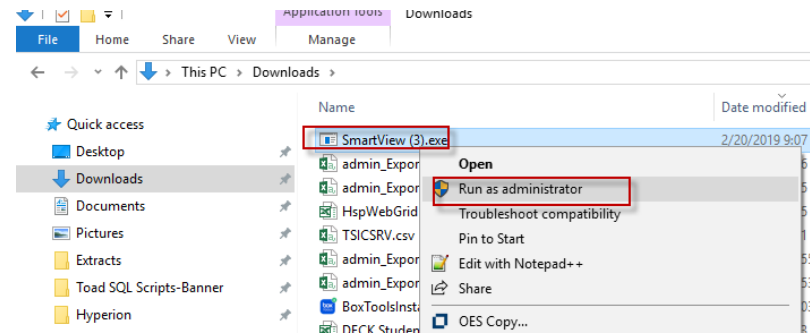


- Save the file on your computer

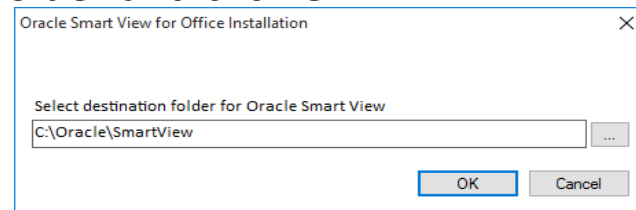


Installation Instructions (cont.)

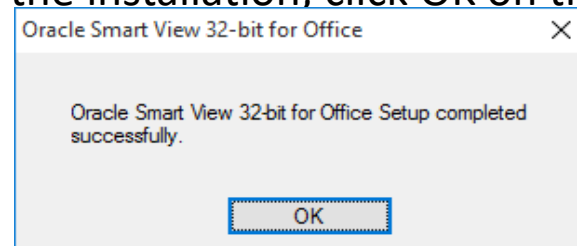
- Close all Microsoft Office applications (Outlook, Excel, Word, PowerPoint).
- Find the downloaded SmartView.exe file. (Unless you specify otherwise, the Smartview.exe file will be saved by default into your C:\Downloads folder. If you've downloaded more than one SmartView.exe file, select the one with the highest number in the parenthesis at the end of the file name. The "Date Modified" of the SmartView.exe file is also an indicator of your most recent version that you just downloaded). Then, right click on this SmartView.exe file to "Run as Administrator".



- Choose "Yes" to allow this app to make changes to your computer.
- Leave the default for destination folder and click OK.



- Several screens will flash, and after the installation, click OK on the message shown below.



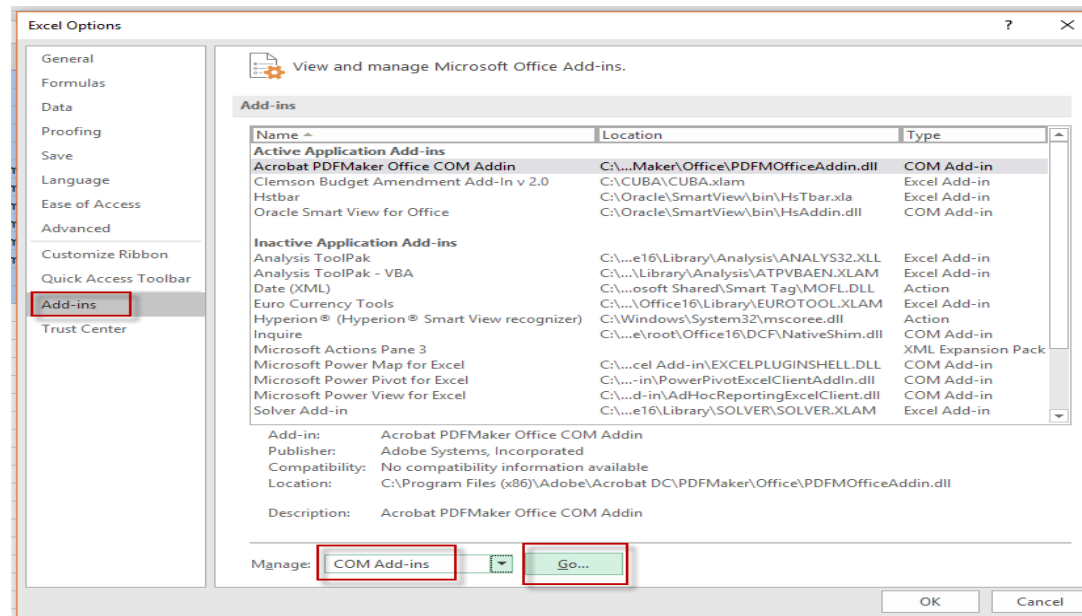
Installation Instructions (cont.)

If prompted (possible if reinstalling), reboot.

Open Excel. If you do not see SmartView in the top ribbon,



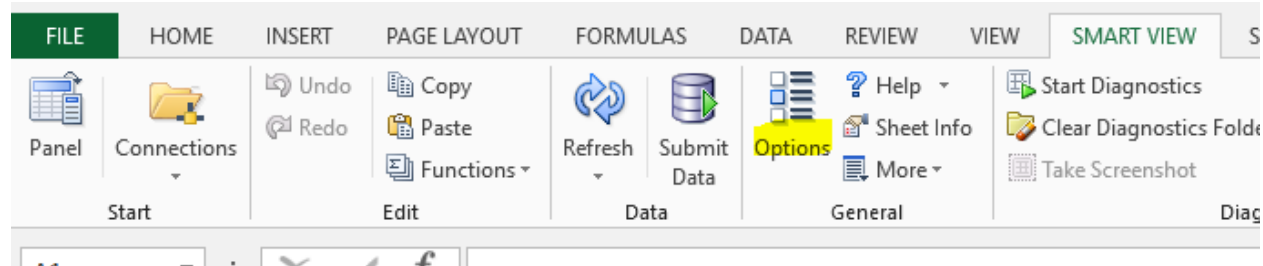
Select “File” from the top menu. Select “Options” and then “Add-Ins”. At the bottom of that Window, in Manage, choose “COM Add-Ins” and hit “Go”.



Make sure the “Oracle Smart View for Office” is selected and click “OK”. Then, close and re-open Excel.

Installation Instructions (cont.)

For the first use/connection, select the Smart View ribbon. Select Option



Click on Advanced and make sure the Share Connection URL is <https://foundation01.clemson.edu:4443/workspace/SmartViewProviders>

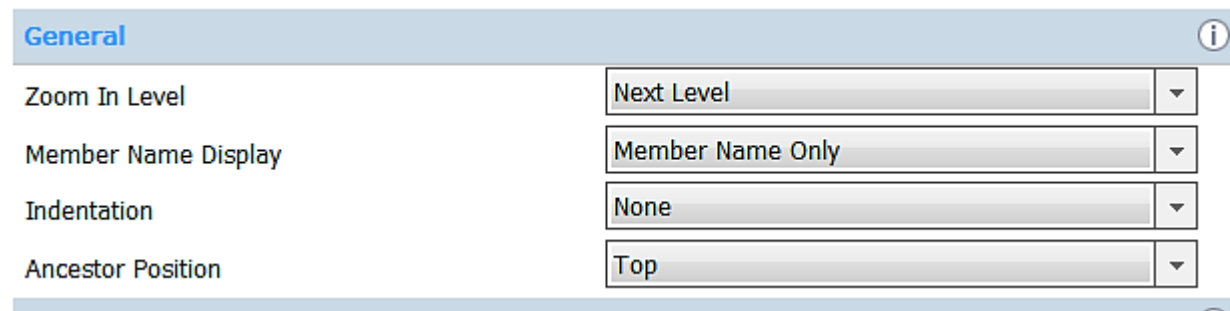
Please note: A blank sheet or existing worksheet has to be open to use SmartView.

If you have any questions or issues, please send an email to Jessica Marchant (jstoots@clemson.edu) for assistance.

Option Button Settings

When selecting the option button under the SMART VIEW tab, a pop-up box will appear with certain settings to choose from.

Under the “Member Options”, make sure the zoom in level is “Next Level”. Otherwise you have the chance of seeing more or less information than desired.



General i	
Zoom In Level	Next Level
Member Name Display	Member Name Only
Indentation	None
Ancestor Position	Top

Option Button Settings (cont.)

Under “Data Options”, make sure the “No Data / Missing” is selected under the Suppress Rows sections.



Under “Advanced”, always be sure the Shared Connections URL does not change after setting up SmartView.

Option Button Settings (cont.)

The “Formatting” section should appear as below:

The screenshot shows a software interface with a 'Formatting' section. The section is titled 'Formatting' in blue text on a light blue background, with an information icon (i) to the right. Below the title, there are several options:

- Use Thousands Separator
- Use Cell Styles
- Use Excel Formatting
- Move Formatting on Operations
- Retain Numeric Formatting
- Adjust Column width

Below these options, there are two rows of settings:

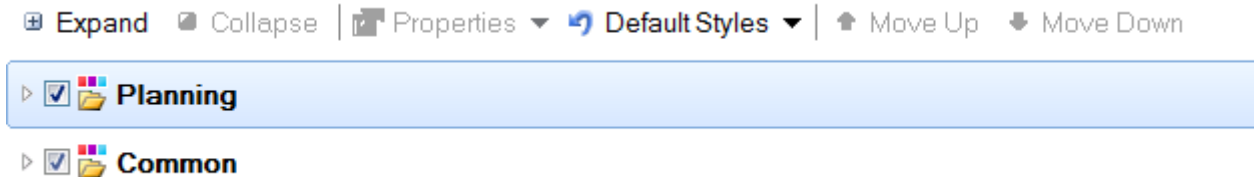
Scale	Default
Preview	
Decimal Places	2
Preview	1.00

Below the 'Formatting' section, there is a 'Form' section, also titled in blue text on a light blue background, with an information icon (i) to the right. Below the title, there is one option:

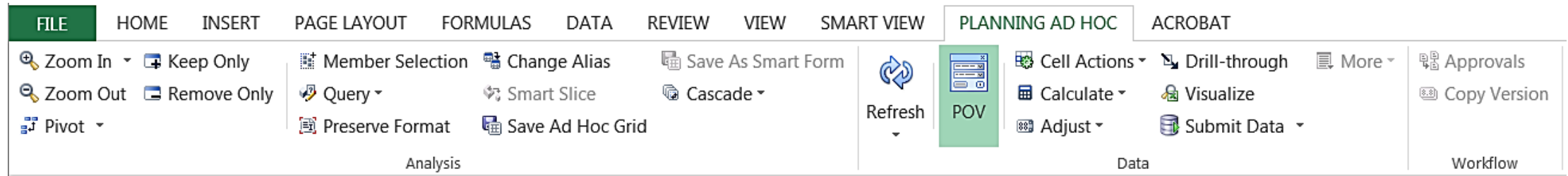
- Repeat Member Labels










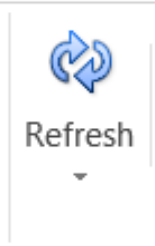
Option Button Settings (cont.)

If there are ever issues with the color formatting, simply go to the “Cell Styles” section, select the “Default Styles” drop down box, and then “Common”. This should return things to normal.

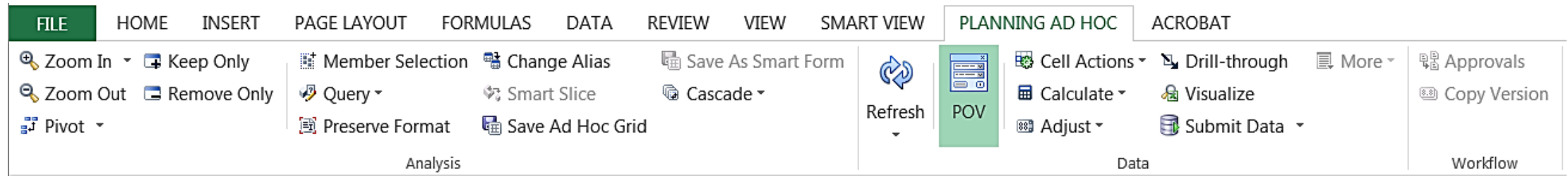


Button Descriptions – PLANNING AD HOC



 Zoom In ▾	Allows the user zoom in to the default zoom level.
 Zoom Out	Allows the user to collapse the view based on the default zoom level.
 Keep Only	Keeps the currently selected members.
 Remove Only	Removes the currently selected members. Can select multiple members.
 Pivot ▾	Pivots a dimension or member between rows and columns.
 Member Selection	Opens a window to select members applicable for the user variable (applies to active cell). See Mapping pg. 16.
 Preserve Format	Applies Smart View formatting selections to cells created by zooming in.
 Change Alias	Choose between the descriptive alias or nothing.
 Cascade ▾	Generates multiple sheets or workbooks at the next level down.
	Select this when opening SmartView to allow the user to sign-in and begin working with the document. After signing in, it is used for retrieving and refreshing the data when changing the criteria.

Button Descriptions – PLANNING AD HOC (cont.)



Stands for 'Point Of View'. This can be locked at the top of the screen or moved in a box anywhere on the page. This is where fixed members can be parked.



Drill-through

Takes you to the general ledger.



Visualize

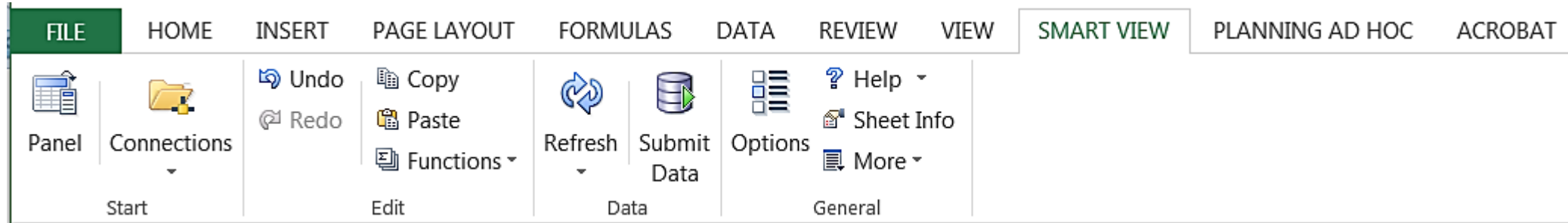
Allows the user to see the information on an Excel grid.



Submit Data

Only applicable during budget development. Saves data to the system.

Button Descriptions – SMART VIEW



Panel

Opens a panel on the right side of the screen where you can view task lists, document contents, and more.



Connections

Shows which servers you are connecting to.



Undo

Allows the user to undo a step in SmartView. This is different from the normal Undo button.



Redo

Allows the user to redo a step in SmartView. This is different from the normal Redo button.



Copy

Copies a selected portion of SmartView content.



Paste

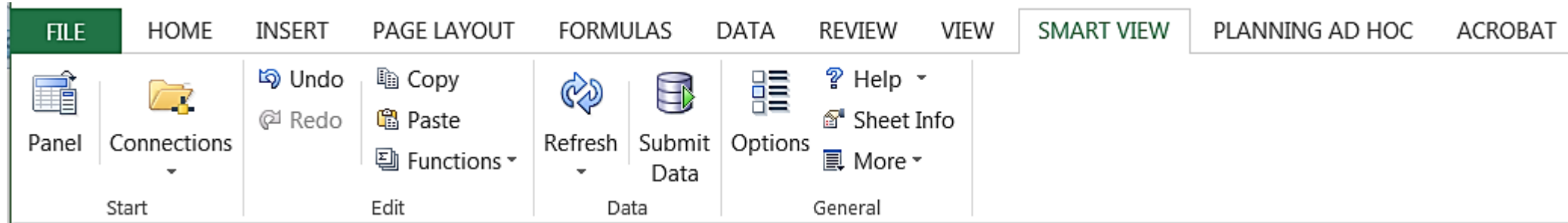
Pastes the copied portion of SmartView content.



Functions

Allows the user to create or manage functions using the Build Function or POV Manager options.

Button Descriptions – SMART VIEW (cont.)



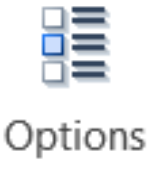
Refresh

Select this when opening SmartView to allow the user to sign-in and begin working with the document. After signing in, it is used for retrieving and refreshing the data when changing the criteria.



Submit
Data

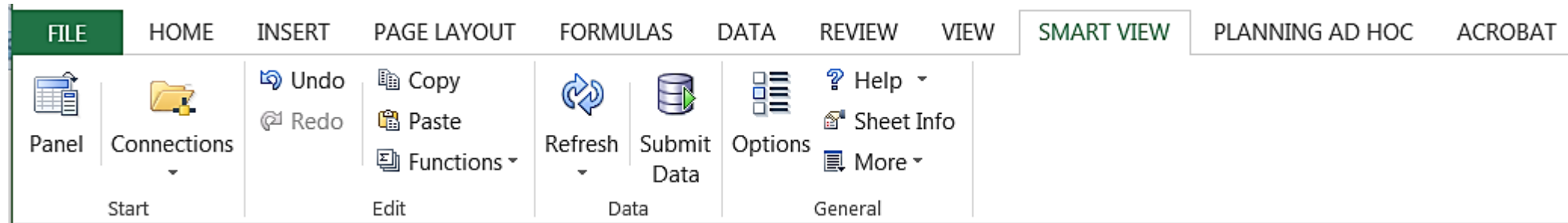
Only applicable during budget development. Saves data to the system.



Options

Where the setting for SmartView are located.

Button Descriptions – SMART VIEW (cont.)



Help ▾

Gives a help menu if you need assistance on a task.



Sheet Info

Allows the user to see connections and other information about their open worksheet.

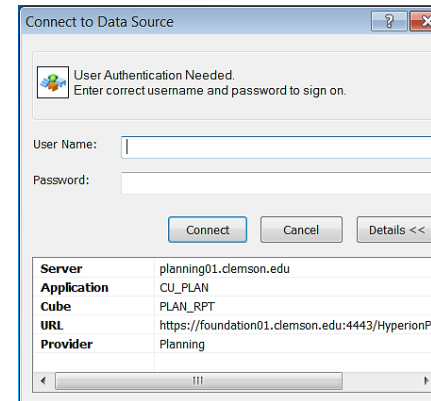


More ▾

Gives different options for migrating workbooks, importing metadata, or inserting a connections list.

Manipulating Data

When first opening SmartView, select “Refresh”. A sign-in pop-up box will appear. After signing in, the user will have access to manipulate the data as they choose.



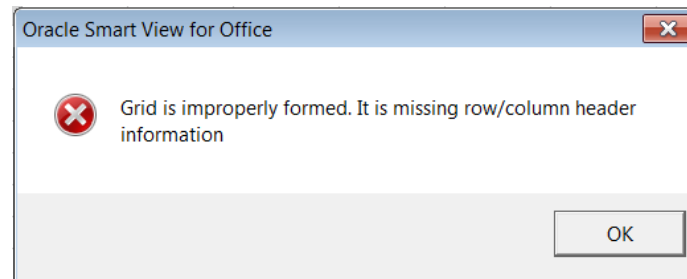
As the workbook is opened, the data will appear the way the workbook is set up. The sample below begins with everything set at the top level.

	A	B	C	D	E	F	G	H
1							FY16	FY16
2							Total Budget	Actual
3							Final	Final
4							Total Ledger	Total Ledger
5							YearTotal	YearTotal
6	FD_ALL	DP_ALL	AC_ALL	CL_ALL	PG_ALL	PJ_ALL	(615,640,051.11)	7,156,839.00

Manipulating Data (cont.)

There are multiple way to manipulate the data to find what you want.

- a) The first is by selecting the cell and typing it in. However, what is typed must match exactly what is in the system. If not, an error message will appear.



- b) The second way is by selecting the "Zoom In" or "Zoom Out" under the PLANNING AD HOC tab. This will allow the you to zoom in or out on members in the grid to display data for their children and descendants.

Manipulating Data (cont.)

FD_ALL	DP_BPA	AC_ALL	CL_ALL	PG_ALL	PJ_ALL
--------	--------	--------	--------	--------	--------

- c) A third way is by double clicking on the cells. If you desire to see all funds for a certain department that has already been selected, such as the example above, then simply double-click “FD_ALL”. As seen below, the “FD_ALL” has zoomed down to the next level.

	A	B	C	D	E	F	G	H
1							FY16	FY16
2							Total Budget	Actual
3							Final	Final
4							Total Ledger	Total Ledger
5							YearTotal	YearTotal
6	FD_CUF	DP_BPA	AC_ALL	CL_ALL	PG_ALL	PJ_ALL	(68,720.46)	(5,492.98)
7	FD_CUFFU	DP_BPA	AC_ALL	CL_ALL	PG_ALL	PJ_ALL	(201,199.44)	(458,883.12)
8	FD_CUFND	DP_BPA	AC_ALL	CL_ALL	PG_ALL	PJ_ALL	(26,463,034.36)	(26,221,941.09)
9	FD_CURF	DP_BPA	AC_ALL	CL_ALL	PG_ALL	PJ_ALL	(1.00)	35,374.15

Manipulating Data (cont.)

If viewing the funds for a certain department is not desired and instead the account is, then simply select the “Undo” button under the SMART VIEW tab. After doing this it will take you back and you can double-click “AC_ALL”.

	A	B	C	D	E	F	G	H
1							FY16	FY16
2							Total Budget	Actual
3							Final	Final
4							Total Ledger	Total Ledger
5							YearTotal	YearTotal
6	FD_ALL	DP_BPA	AC_REV	CL_ALL	PG_ALL	PJ_ALL	18,283,244.85	14,833,129.74
7	FD_ALL	DP_BPA	AC_ALLEXP	CL_ALL	PG_ALL	PJ_ALL	45,016,200.11	41,484,072.78

Note: Performing an Undo after modifying member data returns the sheet to its state before the last refresh, not to its state before the data modification.

Manipulating Data (cont.)

If you only want the revenue accounts, then highlight the cell and select “Keep Only” from the PLANNING AD HOC tab. Another way you could do this is by highlighting “AC_ALLEXP” and selecting “Remove Only” from the PLANNING AD HOC tab.

	A	B	C	D	E	F	G	H	I
1							FY16	FY16	FY15
2							Total Budget	Actual	Total Budget
3							Final	Final	Final
4							Total Ledger	Total Ledger	Total Ledger
5							YearTotal	YearTotal	YearTotal
6	FD_ALL	DP_BPA	AC_REV	CL_ALL	PG_ALL	PJ_ALL	18,283,244.85	14,833,129.74	19,977,067.75

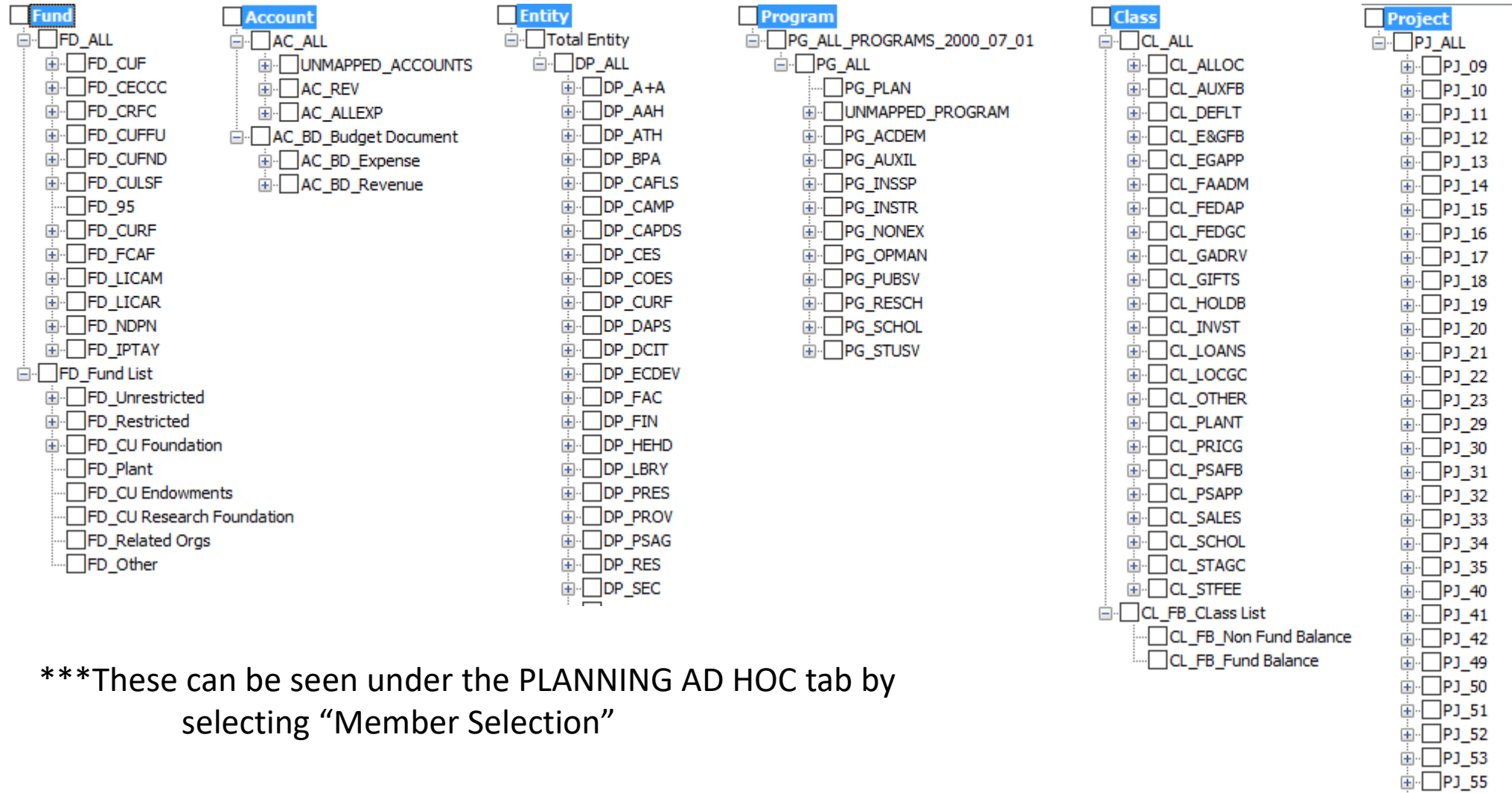
It is important to note that when using the “Keep Only” and “Remove Only” buttons that they will keep or remove the cells that are identical as well. In the last example, if we selected DP_BPA, instead of AC_ALL, and clicked “Keep Only”, then nothing would change due to both lines containing this department.

Manipulating Data (cont.)

If you want to view a fiscal year other than the one listed, simply copy the header lines and paste them adjacent to those already in place. Type the fiscal year desired in the cell and click “Refresh”.

	A	B	C	D	E	F	G	H	I
1							FY16	FY16	FY15
2							Total Budget	Actual	Total Budget
3							Final	Final	Final
4							Total Ledger	Total Ledger	Total Ledger
5							YearTotal	YearTotal	YearTotal
6	FD_ALL	DP_BPA	AC_REV	CL_ALL	PG_ALL	PJ_ALL	18,283,244.85	14,833,129.74	19,977,067.75

Sample Hierarchy



***These can be seen under the PLANNING AD HOC tab by selecting "Member Selection"