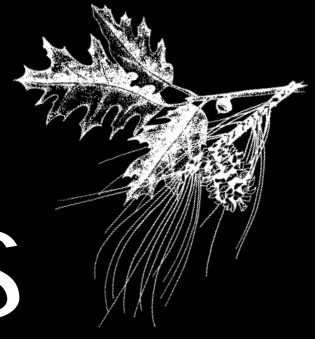


Forestry Alumni News



Spring 2000

A Note from CUFA President Tom Rowland

Clemson Forestry Alumni – you and me, and our organization’s new name! Nothing much has really changed, we are just dropping the word “association.” I’m happy to report to you that we’re actually making the transition to the Clemson University Alumni Association and Clemson Foundation. In the past few weeks, Dr. Vic Shelburne and I have met with the Clemson Foundation and we have completed the paperwork that will make it official. We’ll soon transfer the funds from our operating account to a “Clemson Forestry Alumni” account that the Clemson Foundation will manage for us. As a result of this change, not only will our money grow, but also our donations will now, for the first time in our history, be eligible for matching funds. I hope each of you will keep this in mind when you support our alumni projects. We also look forward to having the assistance of the Alumni Association assist us in newsletter design and mailing, as well as help with meetings and other functions. All in all, this should prove to be a good move for our organization. We will remain as autonomous as we wish, while reaping the benefits of the larger Clemson Alumni Association and Clemson Foundation.

Dr. Pat Layton is on board as the new Forest Resources Department Chair. Pat is exciting to talk with, and she has many plans for Forestry at Clemson. Having spent some time with Pat last month, I am convinced that she will do an excellent job. She is working hard to find a niche for Clemson Forestry that will meet the future needs of both our profession and students. Pat feels very strongly about the value of our organization. She agrees with me that we are a valuable resource for the Forest Resources Depart-

ment. I look forward to working with her during the remainder of my tenure as president and I hope all of you will join me in welcoming Pat back to Clemson.

It gives me great pleasure to invite all of you to the First Annual Clemson Forestry Alumni Low Country Boil on Thursday, May 18th from 6-9 pm at the DeBordieu Colony Club just north of Georgetown on Highway 17. Dr. George Askew and the folks at Hobcaw Barony have offered to help serve up shrimp and beer in a very casual setting for what should be a good time. Our guest of honor will be Dr. Pat Layton. I hope to see many other faculty members as well. As many of you know, it has been one of my goals as President to have more than one Forestry Alumni function each year and it seems logical to hold it on the coast since our homecoming meeting is at Clemson. I look forward to seeing many of you there!

Come Join Us for a Forestry Coastal Alumni Social

May 18, 2000
6:00 to 9:00 pm

Recreation Center, DeBordieu Plantation
Hwy 17, Just North of Hobcaw in Georgetown

Beaufort Bog and Beer

Please RSVP by May 16th to Mary Alice Cromer at the Department of Forest Resources by phone (864-656-3302), by fax 864-656-3304, by email (mcromer@clemson.edu) or mail (261 Lehotsky Hall, Clemson, SC 29634-0331)

In closing, let me remind all of you that graduation is just around the corner. One of our most important roles as an organization is to assist Clemson Forestry graduates to find that all-important first job opportunity. If any of you know of any opportunities for new foresters please contact Amy Sanders at the School of Natural Resources (864-656-4840) or feel free to call me at anytime. **Go Tigers!**

Homecoming Recap

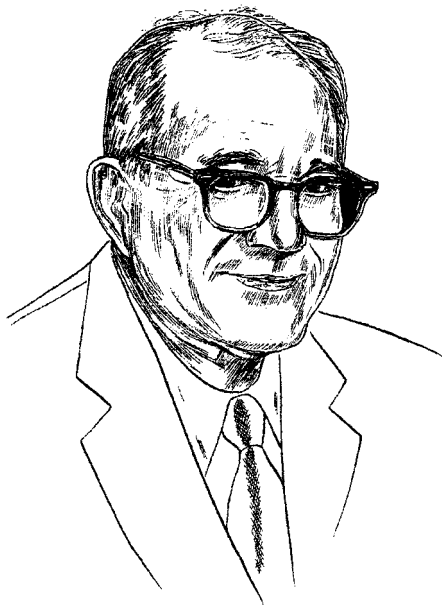
Our Annual Homecoming Meeting/Picnic and Roland E. Schoenike Arboretum Dedication on October 5th was very successful with around 100 participants including alumni and their families along with faculty, staff and students from the Department. Highlights of the day were as follows:

- The dedication ceremony at the arboretum's new entrance (near Dr. Schoenike's nursery) was a short ceremony in remembrance of Dr. Schoenike. Vice-president John Kelly, School Director Allen Dunn, and faculty members Don Ham and Vic Shelburne all recognized Roland's perseverance and accomplishments in creating the arboretum. Roland's two sisters, Doris Schoenike and Betty Miller from Minnesota, his brother Edgar from Arkansas and student Karl Pokorny, unveiled the plaque, which now sits near the entrance at the foot of three large Leyland cypress trees. Karl's place of honor was due to his persistence as a student in focusing attention on the arboretum and rallying students and faculty to care for it. He was presented a plaque recognizing his service to Clemson.

For his efforts, a tree of his choosing will be planted in his honor. The actual plaque naming the arboretum in Roland's honor was made possible by a combination of gifts from the Forestry alumni and the Vice-president's Office. A facsimile of the plaque and its wording is below.

- Officers were recognized as follows:
 - ◆ Tom Rowland (Georgia Pacific)
President 1998-2000
 - ◆ Jimmy Walters (SCFC)
Vice President (President-elect) 1998-2000
 - ◆ Bill Holmes (Georgia Pacific)
Treasurer 1998-2000
 - ◆ Advisory Committee:
 - Rhett Bickley (SCFC) 1998-2000
 - Helen Mohr (USFS-Clemson) 1999-2001
 - Bill Coleman (Wilson, Wright, Moore and Coleman) 1998-2000
 - Bill Bartle (Bowater) 1998-2000
 - David Castle (Georgia Pacific) 1998-2000
 - ◆ Vic Shelburne (Clemson Forest Resources Dept.)
Executive Secretary

Roland E. Schoenike Arboretum



Roland E. Schoenike, Professor of Forestry at Clemson from 1963 until 1988, was largely responsible for the development of this sixty-acre arboretum. Through his care and efforts, over 2000 specimens were planted and nurtured for the education and enjoyment of all who visit. A native of Minnesota, Roland was quiet, soft-spoken, and a friend to all. His love of all things arborescent was contagious and he taught courses in Dendrology, Forest Genetics and Plant Propagation. He authored numerous papers in forest genetics but his foremost devotion was the development of the arboretum, which stands as a monument to his dedicated spirit. Before his death in 1988, the Clemson Board of Trustees officially named this part of the Botanical Garden as the Roland E. Schoenike Arboretum.

➤ A proposal was made by President Tom Rowland that the Clemson University Forestry Alumni Association (CUFAA) move its resources under the broader umbrella of the Clemson University Alumni Association. For the most part, this move would appear seamless to the alumni. Our financial resources would be moved into a Clemson account but we would still retain full control over their use. Furthermore, we would have the resources of the larger alumni association at our disposal. The Alumni Association is already maintaining our mailing list since it was a duplication of effort to maintain separate lists. We will still collect dues for general operating costs but the Alumni Association will collect these dues and donations to various projects (scholarships which we sponsor as an example). We would no longer need a treasurer as a result of the change. Also, because gifts and dues (made for no specific return of service) are eligible for a matching dollar program if the alumni's employers offer this opportunity. These items were discussed and a vote was taken to authorize the move. It carried on a show of hands. For simplicity, the group will now call itself the Clemson Forestry Alumni.

News from and about the Clemson Forestry Alumni

(Please keep those e-mails and letters coming – see last page of newsletter)

Ed Muckenfuss ('63) has been promoted to President of The Forest Technology Group Inc., a wholly owned subsidiary of Westvaco. The group will be headquartered in Summerville, SC and will provide information technology to resource based companies on a worldwide basis. Services will include, but is not limited to forest inventory, data management, ecological assessment, land classification, financial analysis, etc.

Steve Owen ('82) is still working for Bowater after 18 years as a Regional Procurement Manager in Shelby, NC. He is married to Nancy (15 years) and they have 3 daughters: Heather (12), Shannon (9) and Kim (6).

Brad Sanders ('85 and MS '87) has taken a 2 year break from smoke jumping. In 1998 he was doing GIS/fuels planning for the 1.8 million acre Salmon River Canyon Project. In 1999 he was "detailed" as Asst. Fire Manage-

ment Officer (AFMO)/Fuels Specialist to the Council Ranger District on the Payette NF in McCall, Idaho. What's in store for the future? He hopes to continue as a smokejumper squad leader/spotter in the summers and assist the Payette NF with fuels planning/GIS in the winters.

Glynn Winslow ('87) has been an insurance agent (AllState) in Columbia, SC for 5 years and in the business for 7 years.

Jeff Wright ('78), Wright Forest Management Consultants Inc., does international forestry consulting, mostly Latin America and almost exclusively plantations. He lived to tell about hurricanes Fran and Floyd and said the next one beginning with an F will find him in Bali. He survived an armed robbery in Cali, an attack by Indians in Chiapas, and crossed the Orinoco River in a flood in a leaking canoe. His new efforts include 1) developing a strategy for use of genetically transformed trees and likely cost reductions in pulping of modified lignin trees and 2) financing forest plantations in Latin America using carbon credit.

Gary Burger ('93 and MS '96) is Forest Manager of the Hitchcock Foundation in Aiken, SC. He and his wife Rebekah were expecting their first child (daughter) to be born in January – more details later. He is also building their first new home on 35 acres, 10 miles NE of Aiken.

Russell Ross ('88) went to USC Medical School in 1991. He has worked as an ER physician for the last 2 years in Easley, SC. He and Suzie (married 4 years) have a daughter, Olivia. He has been heavily into aviation for the last several years with several ratings earned and works part time as a flight instructor. He writes he misses forestry and wishes he had worked more in it but feels it actually prepared him well for Med School as he went from tree doctoring to human doctoring.

Theodore Blackwell ('62) is currently a Pastor in the United Methodist Church and serves three churches in Berkeley County.

Marc Epting ('77) works for Palmetto Doors & Hardware, Inc. as a Project Manager in Columbia, SC. His third grandchild was born last year. He can be found at all Clemson home football games, on tignet2 (his handle is metiger), or his e-mail (mepting@mindspring.com). He notes Dr. Schoenike

was one of his favorite professors and a fine and brilliant man. Who better than Dr. Schoenike for the Arboretum of the Clemson Botanical Gardens to be named.

Richard Ellis ('63) and Kent Holmes ('80 NC State) have joined to form Ellis & Holmes, PLLC Consulting Foresters.

Dwight Stewart ('70) and Ward Gatlin ('83) have bought a new GPS system. It has been a good replacement for their old GPS system (Gatlin Pulling String). Dwight was appointed by Governor Hodges to the Board of Registration for Foresters for South Carolina.

Allyne "Lyne" Heiterer Askins (MA '94) moved to Florida in October 1998 as Assistant Refuge Manager of 2 animal wildlife refuges with the US Fish and Wildlife Service. Husband Greg, a forestry technician with USFWS, works 6 months at the Lower Suwannee and Cedar Keys National Wildlife Refuges and 6 months at Chassahowitzka and Crystal River National Wildlife Refuges. His time is split 50/50 with forestry and fire. A baby boy, Robert Zachary, was born on March 23, 1999. Definitely a future tiger!

Bob Ozbolt ('71) retired from the Army in '93, settled in Savannah in '95 and still manages extensive world travel demonstrating Gulf Stream Business Jets to potential customers. He has been married for 28 years to the former Georgann Maertens ('71) and they have 2 children, both UVA graduates. Son Sean, 24, is an analyst with First Union Capital Markets in Charlotte and daughter Andrea, 22, is on a 1-year sabbatical in Australia.

Dave Christopher (MFOR '81) is a Forestry Manager with Trus Joist MacMillan in Colbert, Georgia. His oldest son, Kyle, is a junior at Georgia Southern University. His second son, Scott, is a high school senior and his daughter, Lane, is an 8th grader.

Bruce Cole ('95) is the Natural Resources Manager at Holston Army Ammunition Plant in Kingsport, TN. He's been there about 1½ years and says it's great to be back in God's country!

Mark Dymkoski ('73) has retired from the U.S. Forest Service.

Steve Sloan ('78) has been in Maine nearly five years and is currently responsible for Champion International

Corporation's land management and procurement operations in Maine, New Hampshire, and the eastern Canadian provinces.

Bill McCrary ('79) says it's amazing what a Clemson forestry degree qualifies you to do! He is now President of WFM Associates and owner of the Sandler Sales Institute (SSI) of Columbia, recently opening a new 1500 square foot training facility. SSI is a nationwide training organization dedicated to improving sales, management, customer service, and business development skills. SSI was named the #1 Training Company of 1996, 1997 and 1998 by Entrepreneur Magazine and is America's First Sales and Management Training Company to be ISO9000 certified. He says to check them out on the web at www.wfmassociates.com.

W. Dukes Isgett ('91) started his own procurement company, Isgett Forestry in St. Matthews, SC. So far business is good and keeping him very busy. He and his wife, Beverly, are expecting their second child on May 31, 2000.

John Carter ('92) started his own business in September 1998 and is President of Tyger River Forest Products in Union, SC.

Department Chair's Corner Pat Layton ('76)

"Ain't it good to be back home again."

-- John Denver

And that's exactly how I feel. My family and I are very happy to be here in Clemson. We are settling in nicely, with the kids in school and almost all the boxes unpacked. Meanwhile I am learning about the faculty, staff and the University systems.

These are very exciting times for Clemson and the forestry community. In 1999, Clemson University celebrated the 40th anniversary of the graduation of its first modern forestry class. During those 40 years, the program grew and matured, serving the state forest landowners and the industry well. One of my roles as Chair of the Department of Forest Resources is to work with our faculty and staff, forest landowners, industry, conservation groups, other stakeholders and you—our alumni to define our mission for the new millennium.

News From the Department of Forest Resources

We will have no shortage of challenges. State and federal dollars committed to forestry schools will continue to decrease. The University Board of Trustees has asked the faculty to work more aggressively to increase the amount of outside research dollars (above and beyond our current State and Federal formula funds) to fund their work and to build Clemson into a premiere research institution. (That will mean we need to raise about \$2.5 million annually, a significant increase from last year's \$440,000).

The state, its citizens, the industry and their needs have changed. Changing public values are often the driver for shaping public policy that affect the management of all our forestlands. The industry, government and many nonindustrial private landowners own our forest resources, each with different management objectives.

We must make sure we are positioned to meet these and other challenges and that our teaching, research, and extension programs use the best science and technology available to ensure the forests of South Carolina are sustainably managed. With these challenges in mind, the Department's faculty and administration are beginning to chart our future course. We are revitalizing our Forest Resources Advisory Board and plan to meet with them later this spring. We also need and want your input.

While the future holds challenges, it is important that we recognize our assets. We have a talented faculty that is growing. This year we will add two new faculty members at the Baruch Institute—one in Landscape Ecology and one in Extension. Our outside funding is increasing. Our faculty continues to publish significant research findings. Our extension program continues to reach landowners with programs like Master Tree Farmer which expanded to 10 states and more than 1300 people this spring. We are now offering an international course for our urban forestry minors. We have just revised our undergraduate curriculum, are revising and updating our current minors, adding a forest business minor, and plan to add an Environmental and Natural Resources major by 2001. More details of our successes this year are included in "News from the Department" in this newsletter. The future is bright, and we have only to achieve.

Join us this year in our alumni gatherings or just stop by when you are in the area. Clemson is still your home and we'd love to have you "back home again" whenever you can make it.

- Coastal Alumni Meeting on May 18th at the DeBordieu Plantation at the Recreation Center (across from the Beach Club). DeBordieu is immediately North of the Hobcaw Institute on Highway 17. Please join us for a "Beaufort Bog and Beer" from 6-9 pm. Please RSVP by May 16 to the Department by phone (864-656-3302), fax (864-656-3304), email (msndrs@clemson.edu) and mail (261 Lehotsky Hall, Clemson, SC 29634-0331).
- Enrollment in the Department hovers at around 200 undergraduates and 50 graduate students. We may be on the downhill side of the most recent cycle of forest management majors. *Best of all we are teaching the second generation of Clemson Foresters.*
- A new Natural Resources Management concentration under a new major entitled "Environmental and Natural Resources" has been approved by the faculty in Forest Resources. The other two concentrations are "Conservation Biology" and "Natural Resource Economics and Policy." The new major is pending preliminary approval by the Commission on Higher Education. If it receives this preliminary approval, it will be sent through Clemson's internal curriculum review process. This new degree would *not* be a Society of American Foresters accredited degree program. It would however, appeal to a broader range of interests in natural resources. The department of Forest Resources faculty would primarily mentor students in the Natural Resources Management concentration.
- The four scholarships which the Forestry Alumni have sponsored and promoted over the years show the following balances as of April 1, 2000:
 - Koloman Lehotsky Scholarship: \$43,742
 - William A. Shain Scholarship: \$14,472
 - Harrison Freeman Lathrop Scholarship: \$10,000
 - Elaine Potts Memorial Scholarship: \$7,612
- Report on Conclave at Louisiana Tech — Clemson University Forestry Club finished 10th this year at the conclave. A major improvement over last years last place. We did much better in technical events this year.

- Dr. George Kessler received the Forest Landowners, Inc. Extension Forester of the year Award in San Antonio Texas this March in recognition for his outstanding service to forest landowners. The award was presented by our own Ed Muckenfuss, class of '62.
- Dr. Don Ham visited Myerscough College in England this year and has developed a working rela-



Queen Elizabeth greets Bob Bartlett of Bartlett Tree Expert Company as Don Ham, center, looks on.

tionship in arboriculture. As part of that relationship, Clemson University is offering a course in the United Kingdom this May on arboriculture and will be developing distance education courses for our students.

- New look in the Lehotsky Lobby: study tables and chairs but still too few couches.
- Baruch Agreement signals expanded role for Clemson in Coastal Ecology: Clemson University and the Belle W. Baruch Foundation recently signed a new long-term agreement that signals an expanded role for the university in research into the coastal ecology of South Carolina. The Belle W. Baruch Forest Science Institute, established at

Hobcaw Barony in 1975, will now be known as the Belle W. Baruch Institute of Coastal Ecology and Forest Science (BICEFS). The 15,900 acres that comprise Hobcaw Barony were once part of a 1718 grant to John Lord Carteret. Later, it was divided into as many as 11 different rice plantations, but the rice industry collapsed after the Civil War. Between 1905 and 1907 Bernard Baruch – Camden native, financier and adviser to presidents – purchased the plantations and reunited much of the original Hobcaw Barony. Baruch's daughter, Belle, acquired the property from her father, and upon her death in 1964, set up a trust in memory of her father. She decreed that Hobcaw be used by the colleges and universities of the state of South Carolina for teaching and research into forestry, marine biology and the care and propagation of wildlife, flora and fauna. Through her will, the Belle W. Baruch Foundation was established. John Kelly, Clemson Vice President for Public Service & Agriculture, said the university will increase support and hire two new faculty members for the institute. Existing facilities at the Baruch Institute will be improved and expanded over the next few years, using both university and private funds, according to George Askew, resident director at the institute. Facilities now include a 6,800-square-foot laboratory and





Clemson Forestry Alumni:

Name _____

Class _____ Please help us update our files:

Email address: _____

_____ My address is correct as written

_____ Please change my address to:

I am currently employed by:

Located in: _____

Type of Position: _____

Notes, comments and items of interest for future newsletters or Clemson World:
(email to vshlbrn@clemson.edu **OR** write below and mail to: Dr. Vic Shelburne, Department of Forest Resources, Clemson University, Clemson, SC 29634-0331.



We need your support of projects! Please consider joining your fellow alumni and supporting CUFA projects such as the Elaine Potts Memorial Fund, CUFA Operations, the Shain Scholarship, or the Harrison Freeman Lathrop Scholarship.

Make check payable to Clemson University Foundation – Forestry Alumni

I would like my contribution to be distributed as indicated below:

- a. \$_____ for CUFA Operations/Alumni programs
- b. \$_____ William A. Shain Scholarship
- c. \$_____ Elaine Potts Memorial Fund
- d. \$_____ Harrison Freeman Lathrop Scholarship

_____ I have enclosed my company's matching gifts form.

Send your contribution to: Annual Giving Office
Clemson Fund
PO Box 1889
Clemson, South Carolina 29633-9972

office building with space for six scientists, research technicians, graduate students and administrative staff. Researchers have looked at things such as forest regeneration, both after cuttings and after natural disasters; growth studies on cypress and longleaf pine; nutrient cycling in forest ecosystems; impacts of rain and drought on the water table; how tree growth relates to water table; and how ground-water pollution travels in the water table. One of the institute's key assets is more than 30 years experience with forested habitat, which makes it a valuable resource for developers of industrial, business and residential projects along the coast.

- Kevin R. Russell, Willamette Industries and a graduate student under Dr. David Guynn won one of two annual Graduate Research Awards from Clemson University. Congratulations to Kevin, who plans to graduate in December.

Clemson Student Rides for Research

A Forest Resources graduate student, John Henry King III, will be riding in the 9th annual Tour des Trees on July 30th to August 6th, 2000. The Tour des Trees is a fund-raising event for the International Society of Arboriculture Research Trust. Since 1992, Tour des Trees has

raised over \$1.1 million (gross) to support tree research and educational programs. The 550-mile ride will start in Williamsburg, Virginia and travel through West Virginia, Pennsylvania, and end in Baltimore, Maryland.



The ISA Research Trust has continually supported arboriculture and urban forestry research and education at Clemson University. The Forest Resources Department has received over \$100,000 from the Research Trust to help fund vital urban forestry research over the past ten years.

King is studying urban forestry and is the Garden Arborist for the Roland E. Schoenike Arboretum located at the South Carolina Botanical Gardens. He needs to raise a minimum of \$3,000 in pledges, but a lofty goal to be the first rider to reach the \$10,000 plateau has been set. If you would like to sponsor King by making a tax-deductible contribution, you can contact him at jhking@clemson.edu or call the Forest Resources Department office at 864/656-3302. You can also contact the Tour des Trees coordinator, Karl Parker, at karlparker@fcs.net or by phone at 707/967-8984.