



CLEMSON
OFFICE OF INTERNATIONAL AFFAIRS

Clemson University: An Overview



History: Beginnings

- Founder: Thomas Green Clemson (1807-1888), a Philadelphian who married the daughter of a South Carolina statesman, John C. Calhoun.
- In 1888, Clemson bequeathed his personal estate to South Carolina to establish a college that would teach scientific agriculture and the mechanical arts to the young people of the state.
- Clemson Agricultural College of South Carolina formally opened in July 1893 with an enrollment of 446.





History: Significant Dates

- In 1964, the college was renamed Clemson University as the state legislature formally recognized the school's expanded academic offerings and research pursuits.
- In 1998, the nation's only National Science Foundation Engineering Research Center dedicated to materials research, and the first national engineering research center in South Carolina, was established.
- Under President Barker, Clemson was named 2001 "Public College of the Year" by *TIME* magazine.



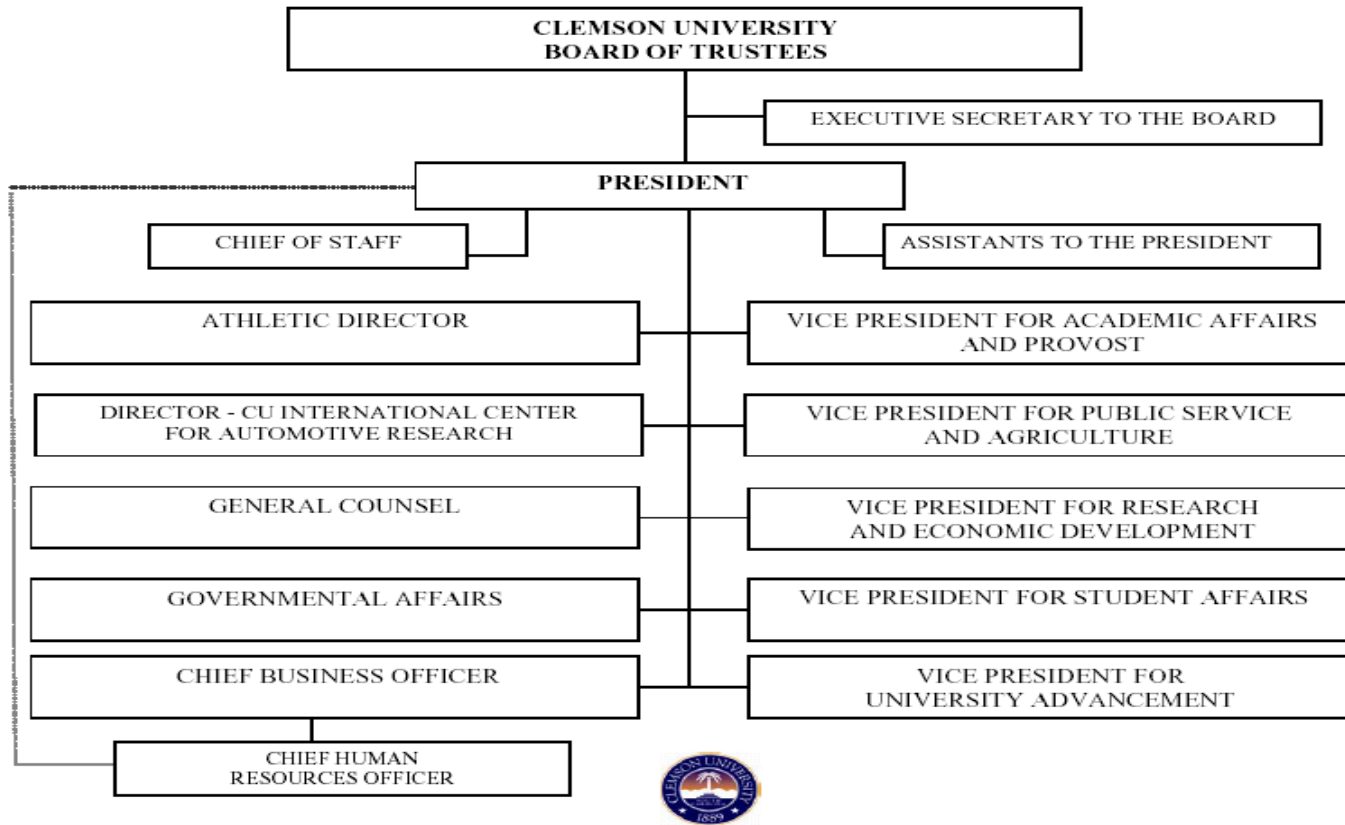


History: Significant Dates

- In 2003, Clemson broke ground for the International Center for Automotive Research (CU-ICAR).
- In 2006, Phi Beta Kappa Society, America's oldest and most prestigious academic honor society, selected Clemson as one of only six new chapters.
- In 2007, *U.S. News & World Report* ranked Clemson 27th among all public national universities, the only South Carolina school in the top 50.

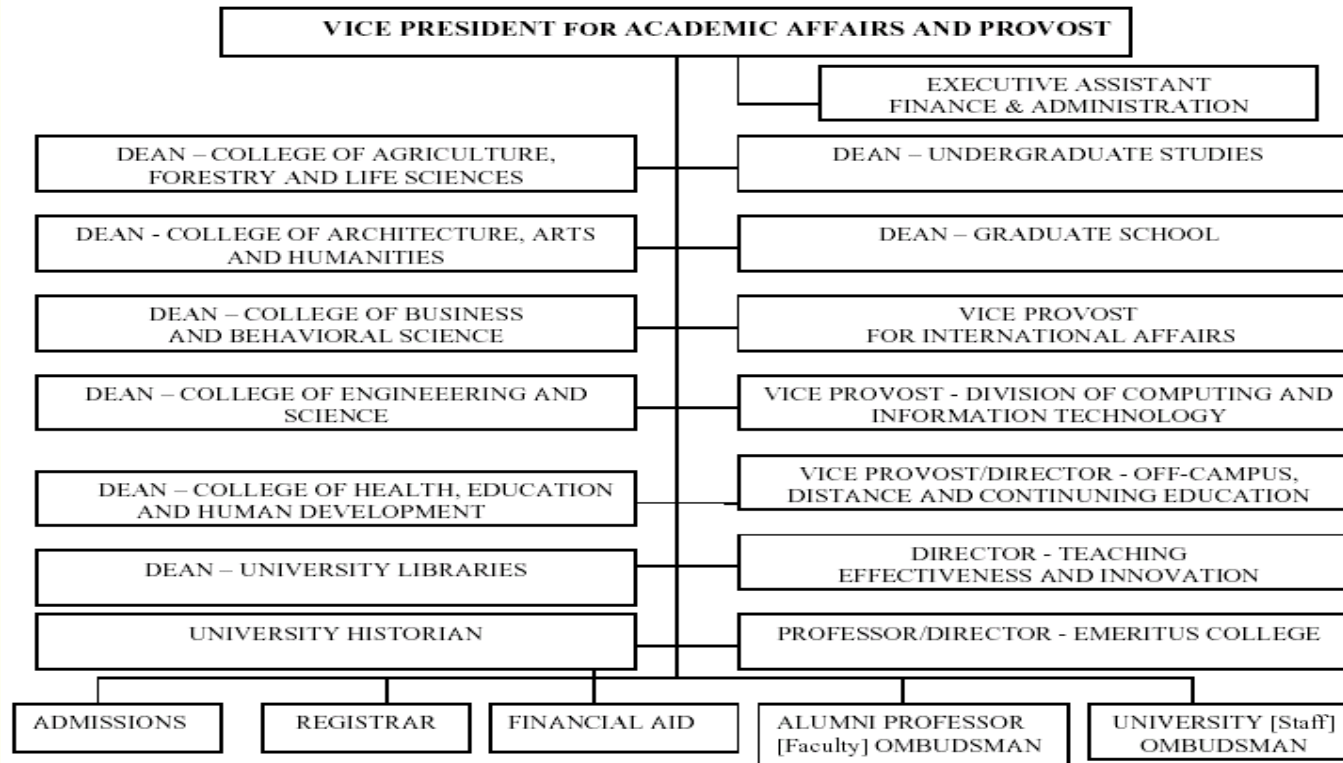


Organization



Institutional Effectiveness and Assessment 2006
Organizational Chart – Board of Trustees and Office of the President

Organization



Institutional Effectiveness and Assessment 2006
Organizational Chart – Board of Trustees and Office of the President

Organization

Five colleges:

- Agriculture, Forestry and Life Sciences
- Architecture, Arts and Humanities
- Business and Behavioral Science
- Engineering and Science
- Health, Education and Human Development

Academics

- 70+ undergraduate and 100+ graduate degree programs
- 1,178 full-time teaching faculty members
- 31 average class size; approximately half of Clemson's classes have 20 students or fewer
- 14:1 student-to-teacher ratio

Student Body (2006-07)

- Enrollment of 17,000 (14,000-undergraduate; 3,000-graduate)
- From 90 countries and all 50 U.S. states
- 47% of entering first year students are in the top 10% of their high school senior class
- 88.9% freshman retention rate
- 44% of students live in University housing

Public Service Activities

- Recognized by The Princeton Review as one of a few select American universities as a “Campus With a Conscience” for its work in community service.
- The university’s statewide network of Public Service Activities (PSA) “conducts research and outreach programs to improve the quality of life for citizens in South Carolina.” Dr. John Kelly, VP for Public Service & Agriculture
- Includes areas such as economic & community development; environmental conservation; food safety & nutrition; youth development & families



Office of International Affairs

- Vice Provost for International Affairs, Dr. James P. Cross
- **International Services:** Assists international students, faculty, staff, and visitors with immigration, employment and tax issues. Coordinates with other campus offices to insure the international population is fully integrated into the campus community.
- **International Programs:** Assists students with study abroad, works with faculty and staff on programming and assists with curriculum development and other campus internationalization initiatives.





Office of International Affairs

The **mission** of the Office of International Affairs is to lead, coordinate, and articulate international initiatives, programs and services in support of the university's missions, goals and emphasis areas.

International Affairs is dedicated to providing student and scholar centered services and is committed to fostering open communication and cooperation with all university constituents in pursuit of our mission.





Office of International Affairs

International Faculty and Staff

Total: 146

Countries Represented: 40

International Students 2007

Undergraduates	61
Graduates	975
Exchanges	<u>52</u>
TOTAL:	1088





Office of International Affairs

Study Abroad Participants Fall 2006/Spring 2007/Summer 2007

College:

Animal Forestry & Life Sciences	79
Architecture, Arts & Humanities	271
Business & Behavioral Science	221
Engineering & Science	88
Health, Educ. & Human Development	73
Transient	<u>19</u>
TOTAL:	751





Office of International Affairs

Exchange Partners:

Clemson University has exchange and partnership agreements with over 50 institutions around the world.

Including such prominent universities as:

Catholic University of Louvain (Belgium);

Technical University of Denmark;

University of Genoa (Italy);

University of Tokyo (Japan);

Istanbul Technical University (Turkey);

University of Bristol (United Kingdom).





Office of International Affairs

Clemson University

E-302 Martin Hall

Box 347514

Clemson, SC 29634-5714

Phone: 1.864.656.1455

Fax: 1.864.656.1466

www.clemson.edu/ia

