

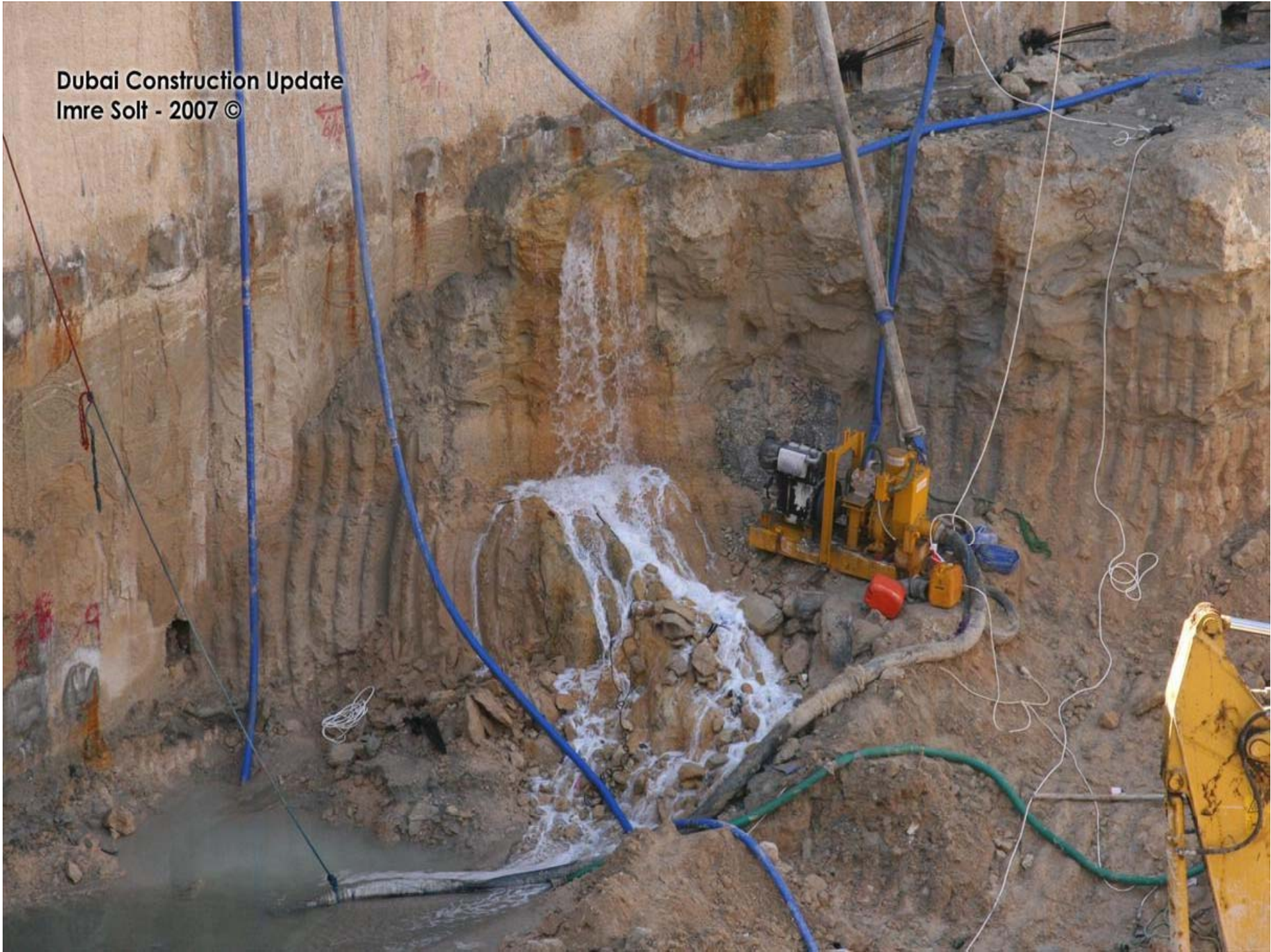
# 38<sup>th</sup> Annual Highway Conference

D. R. Shealy

Dubai Construction Update  
Imre Solt - 2007 ©



Dubai Construction Update  
Imre Solt - 2007 ©





2007 2 7



# **Draft Reporting Requirements**

## ***The American Recovery and Reinvestment Act of 2009 (ARRA)***

**March 19, 2009**



U.S. Department of Transportation  
Federal Highway Administration

# Monthly Project Status Report

- State provided ARRA project status information
- Will be used for meeting the reporting requirements of Sections 1201 and 1512

Format: MS Excel spreadsheet or FHWA provided form

Due date: Within 10 days after the end of every month

Due to: States will send to the official FHWA Division Office mailbox ([state.fhwa@dot.gov](mailto:state.fhwa@dot.gov)). Division will have 2 days to review for compliance and post to FHWA intranet website



# Monthly Project Status Report

## Data Items:

1. State
2. Report month
3. Contracting agency
4. Federal-aid project number
5. State project number or ID
6. Advertisement date
7. Award date
8. Notice to proceed date
9. Percent complete
10. Contractor name
11. Address
12. DUNS number
13. E-mail address

# Monthly Summary Employment Report

- State provided employment information on all ARRA projects
- Will be used for meeting the reporting requirements of Sections 1201 and 1512

Format: MS Excel spreadsheet or FHWA provided form

Due date: Within 20 days after the end of every month

Due to: States will send to the official FHWA Division Office mailbox ([state.fhwa@dot.gov](mailto:state.fhwa@dot.gov)). Division will have 2 days to review for compliance and post to FHWA intranet website



# Monthly Summary Employment Report

## Data Items:

1. State
2. Report month
3. Federal-aid project number
4. State project number or ID
5. Project description
6. Contractor name and State/local agency
7. Status of contractor employment reports
8. Total employees
9. Total hours
10. Total payroll

# Monthly Employment Report

- State, contractor, and subcontractor provided employment information on each ARRA project
- Will be used for meeting the reporting requirements of Sections 1201 and 1512
- State responsible for obtaining for projects managed by local governments under Local Project Agreements
- Prime contractor will report for them self and all subcontractors
- States will compile contractor and State data and report to FHWA using the Monthly Employment Summary Report (Form: FHWA-1587)

Format: MS Excel spreadsheet or FHWA provided form

Due date: Recommend within 10 days after the end of every month

Due to: To be sent by each ARRA prime contractor to the designated contact in each State DOT



# Monthly Employment Report

## Data Items:

1. First day of reporting period
2. Report Month
3. Contracting agency
4. Federal-aid project number
5. State project number or ID
6. Project location
7. Contractor name and address
8. Contractor DUNS number
9. Employment data:
  - a. Subcontractor name
  - b. Employees
  - c. Hours
  - d. Payroll
10. Prepared by:
  - a. Name
  - b. Date

Questions on Reporting?



**C**ontract

**P**erformance

**E**valuation

**S**ystem

January 1, 2009

## Contractor Performance Score (CPS)

**80% - Objective Data (Project Results):**

- On-Time
- On-Budget
- Quality Management Team (QMT) Scores
- Safety
- Claims Denied

**20% - 18 Question Evaluation of Contractor's Performance by RCE (Questionnaire)**

### RCE Performance Report

**Objective Data Results:**

- On-Time
- On-Budget
- QMT Score
- Project Closeout

### SCDOT Performance Report by Contractor

- 15 Question Evaluation of SCDOT's Performance

## CPS Point Values

### Results:

**Safety - 15 pts**

**On-Budget - 15 pts**

**QMT score - 20 pts**

**On-Time - 20 pts**

**Claims Denied - 10 pts**

**80 pts**

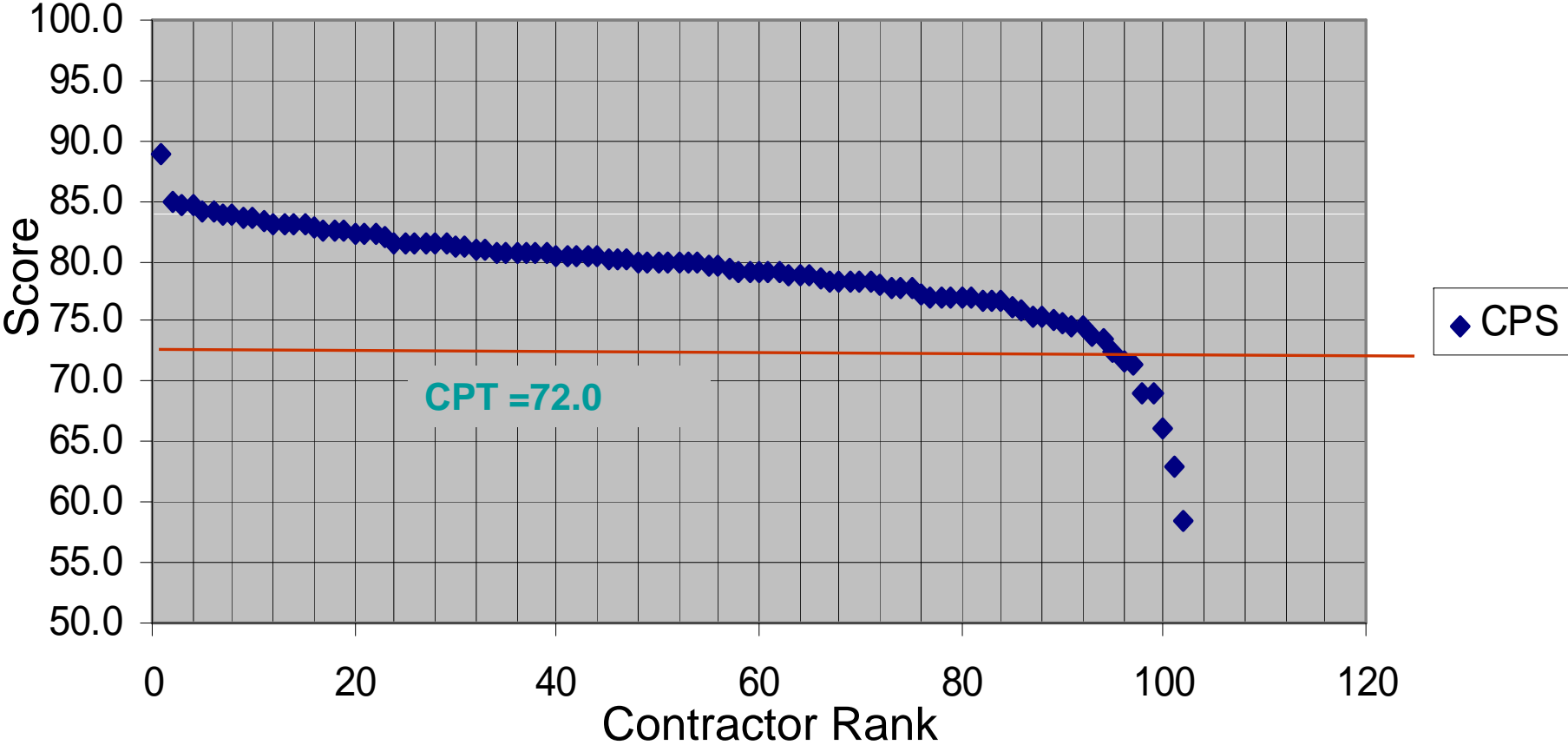
### Questionnaire:

**18 Questions - 20 pts**

**Total = 100 pts**

	Max. Ponits ==>			15	15		20	20		10			10		10			
	NAME	Projects	Safety Index	Safety Points	On Budget Index	On Budget Points	On Time Index	On Time Points	QMT Index	QMT Points	Claims Index	Claims Points	Subtotal Part I Score	Part II Score	PartII Points	Part III Score	Part III Points	CPS S0-C-15
52		3	0.815	12.2	0.847	12.7	0.792	15.8	0.620	12.4	1.000	10.0	63.1	0.850	8.5	0.737	7.4	79.0
53		2	0.795	11.9	0.735	11.0	0.752	15.0	0.870	17.4	1.000	10.0	65.3	0.725	7.3	0.630	6.3	78.9
54		5	0.655	9.8	0.832	12.5	0.741	14.8	0.750	15.0	1.000	10.0	62.1	0.836	8.4	0.818	8.2	78.7
55		1	0.690	10.4	0.810	12.2	0.750	15.0	0.750	15.0	1.000	10.0	62.6	0.807	8.1	0.790	7.9	78.6
56		1	0.785	11.8	0.720	10.8	0.752	15.0	0.715	14.3	1.000	10.0	61.9	0.780	7.8	0.890	8.9	78.6
57		2	0.770	11.6	0.740	11.1	0.756	15.1	0.750	15.0	1.000	10.0	62.8	0.800	8.0	0.760	7.6	78.4
58		1	0.845	12.7	0.770	11.6	0.701	14.0	0.750	15.0	1.000	10.0	63.3	0.780	7.8	0.730	7.3	78.4
59		1	0.740	11.1	0.770	11.6	0.750	15.0	0.750	15.0	1.000	10.0	62.7	0.800	8.0	0.760	7.6	78.3
60		1	0.800	12.0	0.760	11.4	0.750	15.0	0.750	15.0	1.000	10.0	63.4	0.710	7.1	0.780	7.8	78.3
61		1	0.585	8.8	0.700	10.5	0.906	18.1	0.750	15.0	1.000	10.0	62.4	0.800	8.0	0.780	7.8	78.2
62		1	0.810	12.2	0.750	11.3	0.686	13.7	0.750	15.0	1.000	10.0	62.2	0.820	8.2	0.780	7.8	78.2
63		4	0.735	11.0	0.630	9.5	0.794	15.9	0.715	14.3	1.000	10.0	60.7	0.828	8.3	0.877	8.8	77.8
64		10	0.710	10.7	0.652	9.8	0.782	15.6	0.750	15.0	1.000	10.0	61.1	0.816	8.2	0.843	8.4	77.7
65		9	0.845	12.7	0.736	11.0	0.672	13.4	0.750	15.0	1.000	10.0	62.1	0.813	8.1	0.754	7.5	77.7
66		14	0.825	12.4	0.716	10.7	0.805	16.1	0.655	13.1	1.000	10.0	62.3	0.765	7.7	0.765	7.6	77.6
67		7	0.760	11.4	0.703	10.5	0.742	14.8	0.750	15.0	1.000	10.0	61.7	0.762	7.6	0.816	8.2	77.5
68		22	0.760	11.4	0.770	11.6	0.785	15.7	0.683	13.7	1.000	10.0	62.4	0.754	7.5	0.754	7.5	77.4
69		1	0.855	12.8	0.500	7.5	0.792	15.8	0.750	15.0	1.000	10.0	61.1	0.780	7.8	0.850	8.5	77.4
70		8	0.770	11.6	0.721	10.8	0.758	15.2	0.725	14.5	1.000	10.0	62.1	0.783	7.8	0.742	7.4	77.3
71		1	0.955	14.3	0.750	11.3	0.752	15.0	0.750	15.0	1.000	10.0	65.6	0.730	7.3	0.440	4.4	77.3
72		10	0.820	12.3	0.809	12.1	0.667	13.3	0.750	15.0	1.000	10.0	62.7	0.729	7.3	0.715	7.2	77.2
73		4	0.825	12.4	0.698	10.5	0.727	14.5	0.750	15.0	1.000	10.0	62.4	0.715	7.2	0.763	7.6	77.2
74		3	0.835	12.5	0.710	10.7	0.765	15.3	0.650	13.0	1.000	10.0	61.5	0.795	8.0	0.755	7.5	77.0
75		2	0.755	11.3	0.820	12.3	0.750	15.0	0.790	15.8	1.000	10.0	64.4	0.605	6.1	0.645	6.4	76.9
76		1	0.640	9.6	0.870	13.1	0.653	13.1	0.750	15.0	1.000	10.0	60.8	0.807	8.1	0.790	7.9	76.8
77		2	0.645	9.7	0.740	11.1	0.750	15.0	0.750	15.0	1.000	10.0	60.8	0.807	8.1	0.790	7.9	76.8
78		2	0.740	11.1	0.770	11.6	0.799	16.0	0.750	15.0	1.000	10.0	63.7	0.685	6.9	0.600	6.0	76.6
79		7	0.625	9.4	0.759	11.4	0.721	14.4	0.750	15.0	1.000	10.0	60.2	0.846	8.5	0.780	7.8	76.5
80		1	0.705	10.6	0.730	11.0	0.750	15.0	0.750	15.0	1.000	10.0	61.6	0.690	6.9	0.800	8.0	76.5
81		3	0.825	12.4	0.780	11.7	0.743	14.9	0.617	12.3	1.000	10.0	61.3	0.715	7.2	0.780	7.8	76.3
82		1	0.760	11.4	0.520	7.8	0.750	15.0	0.750	15.0	1.000	10.0	59.2	0.840	8.4	0.840	8.4	76.0
83		4	0.692	10.4	0.653	9.8	0.766	15.3	0.725	14.5	1.000	10.0	60.0	0.785	7.9	0.805	8.0	75.9
84		19	0.725	10.9	0.717	10.8	0.758	15.2	0.718	14.4	1.000	10.0	61.3	0.742	7.4	0.720	7.2	75.9
85		2	0.555	8.3	0.835	12.5	0.746	14.9	0.760	15.2	1.000	10.0	60.9	0.770	7.7	0.710	7.1	75.7
86		1	0.750	11.3	0.320	4.8	1.000	20.0	0.750	15.0	1.000	10.0	61.1	0.800	8.0	0.650	6.5	75.6
87		3	0.820	12.3	0.663	10.0	0.731	14.6	0.630	12.6	1.000	10.0	59.5	0.780	7.8	0.817	8.2	75.5
88	CPT+3.0 =75.0	5	0.750	11.3	0.764	11.5	0.747	14.9	0.750	15.0	1.000	10.0	62.7	0.704	7.0	0.572	5.7	75.4
89		6	0.475	7.1	0.783	11.8	0.727	14.5	0.810	16.2	1.000	10.0	59.6	0.810	8.1	0.752	7.5	75.2
90		2	0.600	9.0	0.805	12.1	0.750	15.0	0.750	15.0	1.000	10.0	61.1	0.700	7.0	0.710	7.1	75.2
91		5	0.505	7.6	0.738	11.1	0.774	15.5	0.750	15.0	1.000	10.0	59.2	0.762	7.6	0.774	7.7	74.5
92	CPT+1.0 =73.0	6	0.610	9.2	0.750	11.3	0.753	15.1	0.605	12.1	1.000	10.0	57.7	0.827	8.3	0.822	8.2	74.2
93		1	0.800	12.0	0.750	11.3	0.433	8.7	0.750	15.0	1.000	10.0	57.0	0.870	8.7	0.800	8.0	73.7
94		3	0.655	9.8	0.543	8.2	0.729	14.6	0.750	15.0	1.000	10.0	57.6	0.785	7.9	0.710	7.1	72.6
95	CPT = 72.0	9	0.765	11.5	0.624	9.4	0.773	15.5	0.730	14.6	0.600	6.0	57.0	0.796	8.0	0.744	7.4	72.4
96		1	0.790	11.9	0.660	9.9	0.751	15.0	0.750	15.0	1.000	10.0	61.8	0.620	6.2	0.420	4.2	72.2
97		1	0.815	12.2	0.740	11.1	0.659	13.2	0.750	15.0	1.000	10.0	61.5	0.450	4.5	0.530	5.3	71.3
98		3	0.790	11.9	0.693	10.4	0.775	15.5	0.250	5.0	1.000	10.0	52.8	0.827	8.3	0.850	8.5	69.6
99		40	0.660	9.9	0.817	12.3	0.761	15.2	0.325	6.5	1.000	10.0	53.9	0.723	7.2	0.676	6.8	67.9
100		4	0.875	13.1	0.745	11.2	0.763	15.3	0.670	13.4	0.000	0.0	53.0	0.688	6.9	0.638	6.4	66.3
101		17	0.735	11.0	0.788	11.8	0.825	16.5	0.430	8.6	0.000	0.0	47.9	0.784	7.8	0.780	7.8	63.5
102		1	0.770	11.6	0.670	10.1	0.761	15.2	0.000	0.0	1.000	10.0	46.9	0.740	7.4	0.800	8.0	62.3

# CPS for XYZ, Inc.



# Minimum Required CPS

- When a **Minimum Required CPS** is placed on a project it means that in order to bid on that project, the bidder must have a **CPS** at or above the **Minimum Required CPS**.
- Not all projects will have a **Minimum Required CPS**.
- Bidders that do not have a current **CPS** are not subject to this restriction. In other words, they can bid on any project.

# RCE Performance Score

- **4 Performance Results:**

- ◆ **On-Budget**

- ◆ **On-Time**

- ◆ **QMT Score for RCE**

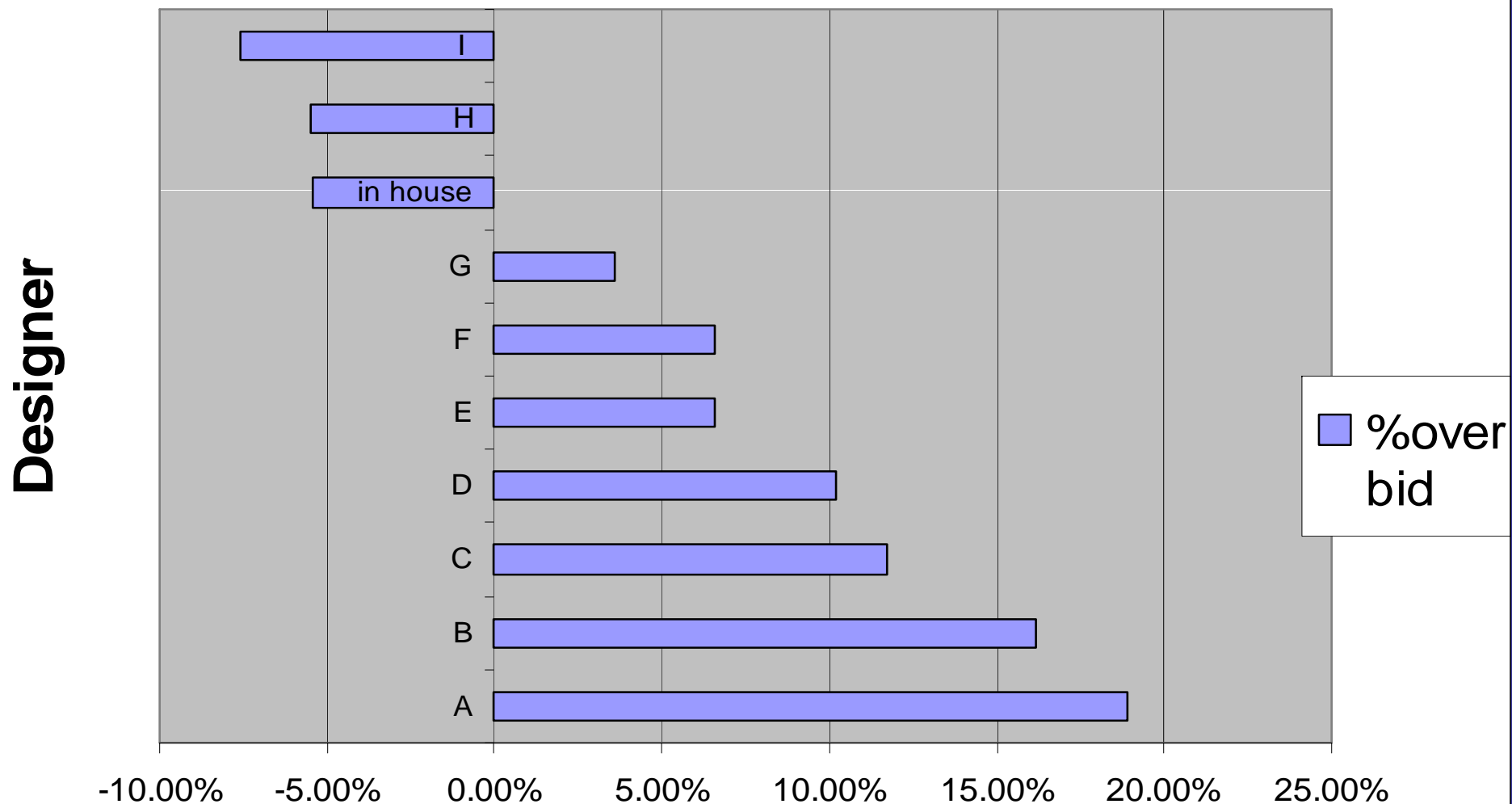
- ◆ **Contract Closeout**

- **Same Performance data (On Time & On Budget) as Contractor**

- **Data obtained from completed projects, except for QMT score, which comes from active projects**

# Next Steps Consultant Evaluations

%over bid



**SC-M-714**  
**Permanent Pipe Installation**

# Acceptable Permanent Pipe

- Reinforced Concrete(RCP)
- High-Density Polyethylene(HDPE)
- Corrugated Aluminum Alloy(CAAP)
- Spiral Ribbed Aluminum Alloy(SRAP)

# Questions





POLE LINE  
POWER SUSPENSION



YOU' LL NEVER  
GET TO WORK  
ON TIME  
HAHA!!





Thank you for mom, dad,,,

Thank you for sending me to Timmy and not Michael Vick