

## A. Economic Indicators: Establishments and Employment, Appalachian COG

Indicator	Geographic Area	Year					Percent Change	
		2000	2004	2005	2006	2007	2000-2007	2006-2007
<b>Private Establishments</b>		<b>2000</b>	<b>2004</b>	<b>2005</b>	<b>2006</b>	<b>2007</b>	<b>2000-2007</b>	<b>2006-2007</b>
	Anderson County	3,470	3,404	3,534	3,707	3,427	-1.2%	-7.6%
	Cherokee County	987	960	986	1,026	899	-8.9%	-12.4%
	Greenville County	11,811	11,821	12,299	13,148	12,135	2.7%	-7.7%
	Oconee County	1,467	1,485	1,556	1,655	1,500	2.2%	-9.4%
	Pickens County	2,179	2,047	2,142	2,281	2,075	-4.8%	-9.0%
	Spartanburg County	6,352	6,038	6,239	6,565	5,899	-7.1%	-10.1%
	<b>Appalachian COG</b>	26,266	25,755	26,756	28,382	25,935	-1.3%	-8.6%
	<b>South Carolina</b>	110,221	108,929	115,194	125,222	113,254	2.8%	-9.6%
	<b>United States</b>	7,646,318	8,093,142	8,294,662	8,505,496	8,680,218	13.5%	2.1%
<b>Employment</b>		<b>2000</b>	<b>2004</b>	<b>2005</b>	<b>2006</b>	<b>2007</b>	<b>2000-2007</b>	<b>2006-2007</b>
	Anderson County	52,923	48,528	48,069	48,313	48,820	-7.8%	1.0%
	Cherokee County	18,745	16,926	16,875	17,047	17,513	-6.6%	2.7%
	Greenville County	208,351	196,899	200,653	205,306	210,099	0.8%	2.3%
	Oconee County	21,912	19,827	18,907	17,721	17,806	-18.7%	0.5%
	Pickens County	29,319	26,532	26,850	27,998	28,583	-2.5%	2.1%
	Spartanburg County	103,729	97,747	97,764	99,197	101,131	-2.5%	1.9%
	<b>Appalachian COG</b>	434,979	406,459	409,118	415,582	423,952	-2.5%	2.0%
	<b>South Carolina</b>	1,507,621	1,476,668	1,500,676	1,534,903	1,563,381	3.7%	1.9%
	<b>United States</b>	110,023,983	108,490,066	110,611,016	112,718,858	114,014,680	3.6%	1.1%
<b>Manufacturing Employment</b>		<b>2000</b>	<b>2004</b>	<b>2005</b>	<b>2006</b>	<b>2007</b>	<b>2000-2007</b>	<b>2006-2007</b>
	Anderson County	19,027	14,119	14,334	13,947	13,345	-29.9%	-4.3%
	Cherokee County	8,798	6,225	6,274	6,306	6,405	-27.2%	1.6%
	Greenville County	44,268	35,286	34,331	30,955	30,600	-30.9%	-1.1%
	Oconee County	9,656	7,274	6,627	5,630	5,283	-45.3%	-6.2%

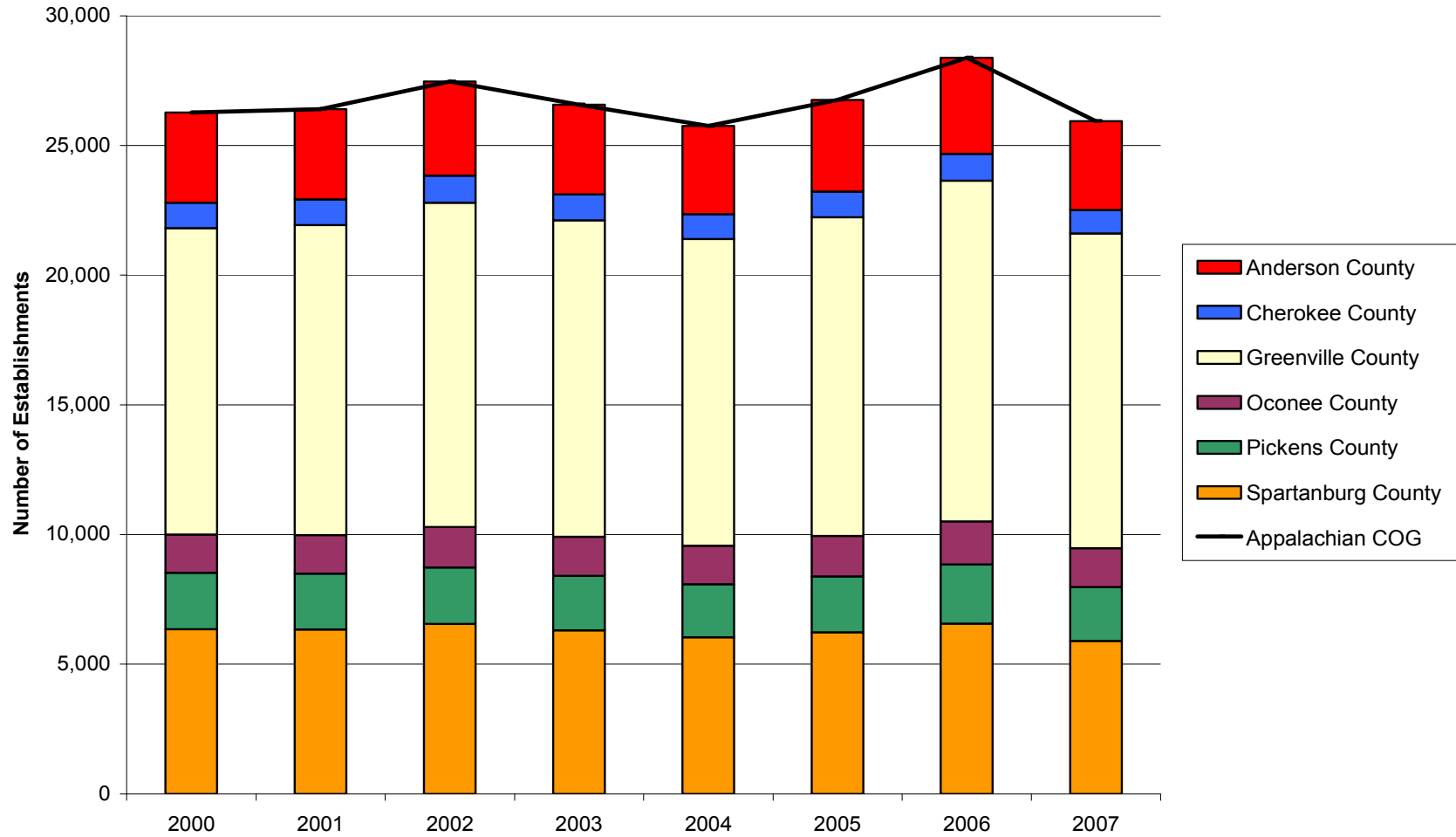
Pickens County	9,196	6,149	6,117	6,628	6,683	-27.3%	0.8%
Spartanburg County	36,437	30,419	29,253	27,725	27,579	-24.3%	-0.5%
<b>Appalachian COG</b>	127,382	99,472	96,936	91,191	89,895	-29.4%	-1.4%
<b>South Carolina</b>	335,118	267,426	262,714	253,811	249,647	-25.5%	-1.6%
<b>United States</b>	17,314,423	14,257,380	14,190,394	14,110,663	13,834,745	-20.1%	-2.0%

<b>Unemployment</b>	<b>2000</b>	<b>2004</b>	<b>2005</b>	<b>2006</b>	<b>2007</b>	<b>2000-2007</b>	<b>2006-2007</b>
Anderson County	2,551	5,958	6,199	5,695	5,144	101.6%	-9.7%
Cherokee County	1,054	2,221	1,967	1,908	1,794	70.2%	-6.0%
Greenville County	5,294	12,132	11,568	11,479	10,751	103.1%	-6.3%
Oconee County	1,116	2,357	2,751	2,724	2,177	95.1%	-20.1%
Pickens County	1,721	3,835	3,741	3,561	3,088	79.4%	-13.3%
Spartanburg County	4,554	9,941	9,855	8,821	7,902	73.5%	-10.4%
<b>Appalachian COG</b>	16,290	36,444	36,081	35,037	30,856	89.4%	-11.9%
<b>South Carolina</b>	70,821	138,938	139,693	134,523	125,262	76.9%	-6.9%
<b>United States</b>	5,692,000	8,149,000	7,591,000	7,001,000	7,078,000	24.3%	1.1%

<b>Unemployment Rate</b>	<b>2000</b>	<b>2004</b>	<b>2005</b>	<b>2006</b>	<b>2007</b>	<b>Rate Change</b>	
						<b>2000-2007</b>	<b>2006-2007</b>
Anderson County	3.0	7.1	7.3	6.7	6.0	3.0	-0.7
Cherokee County	4.1	8.8	7.9	7.6	7.1	3.0	-0.5
Greenville County	2.6	5.9	5.5	5.3	4.9	2.3	-0.4
Oconee County	3.4	7.4	8.6	8.8	7.2	3.8	-1.6
Pickens County	3.0	6.7	6.5	6.1	5.3	2.3	-0.8
Spartanburg County	3.5	7.5	7.4	6.6	6.0	2.5	-0.6
<b>Appalachian COG</b>	3.1	6.8	6.7	6.3	5.6	2.5	-0.8
<b>South Carolina</b>	3.6	6.8	6.7	6.4	5.9	2.3	-0.5
<b>United States</b>	4.0	5.5	5.1	4.6	4.6	0.6	0.0

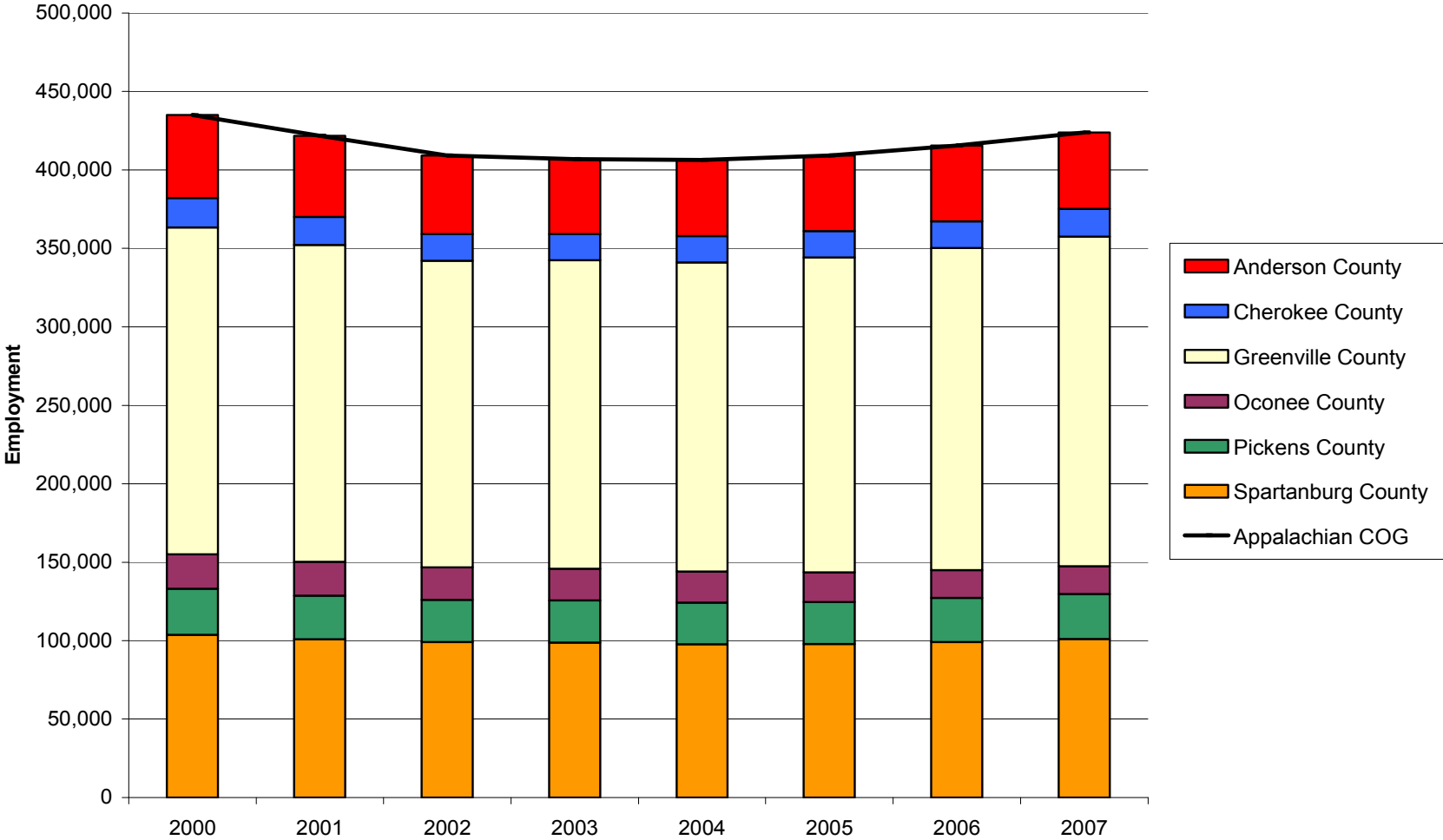
## Private Establishments in the Appalachian COG Region and Component Counties, 2000-2007

Source: Quarterly Census of Employment and Wages (2000-2007). U.S. Department of Labor, Bureau of Labor Statistics



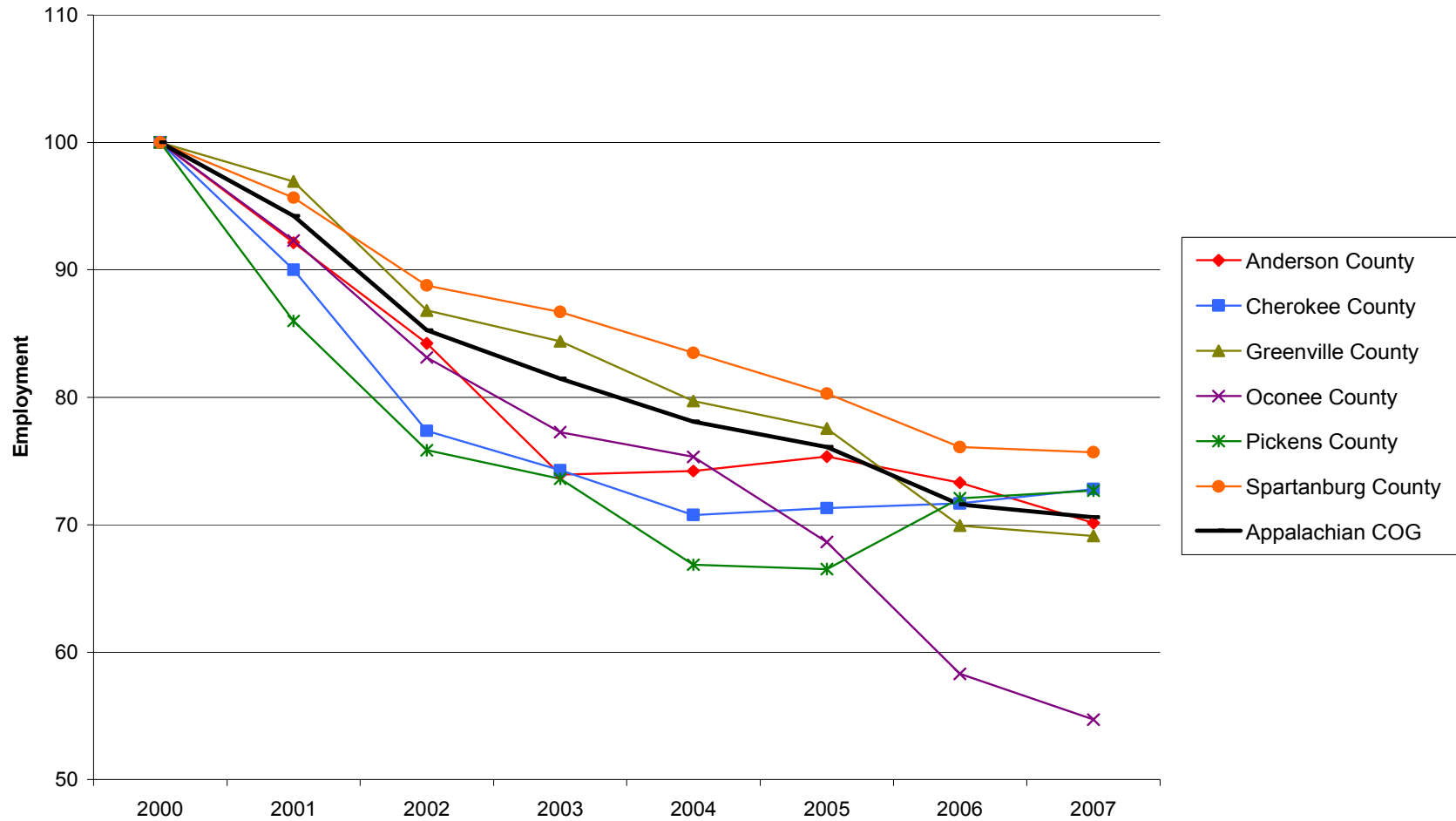
### Private Employment in the Appalachian COG Region and Component Counties, 2000-2007

Source: Quarterly Census of Employment and Wages (2000-2007). U.S. Department of Labor, Bureau of Labor Statistics



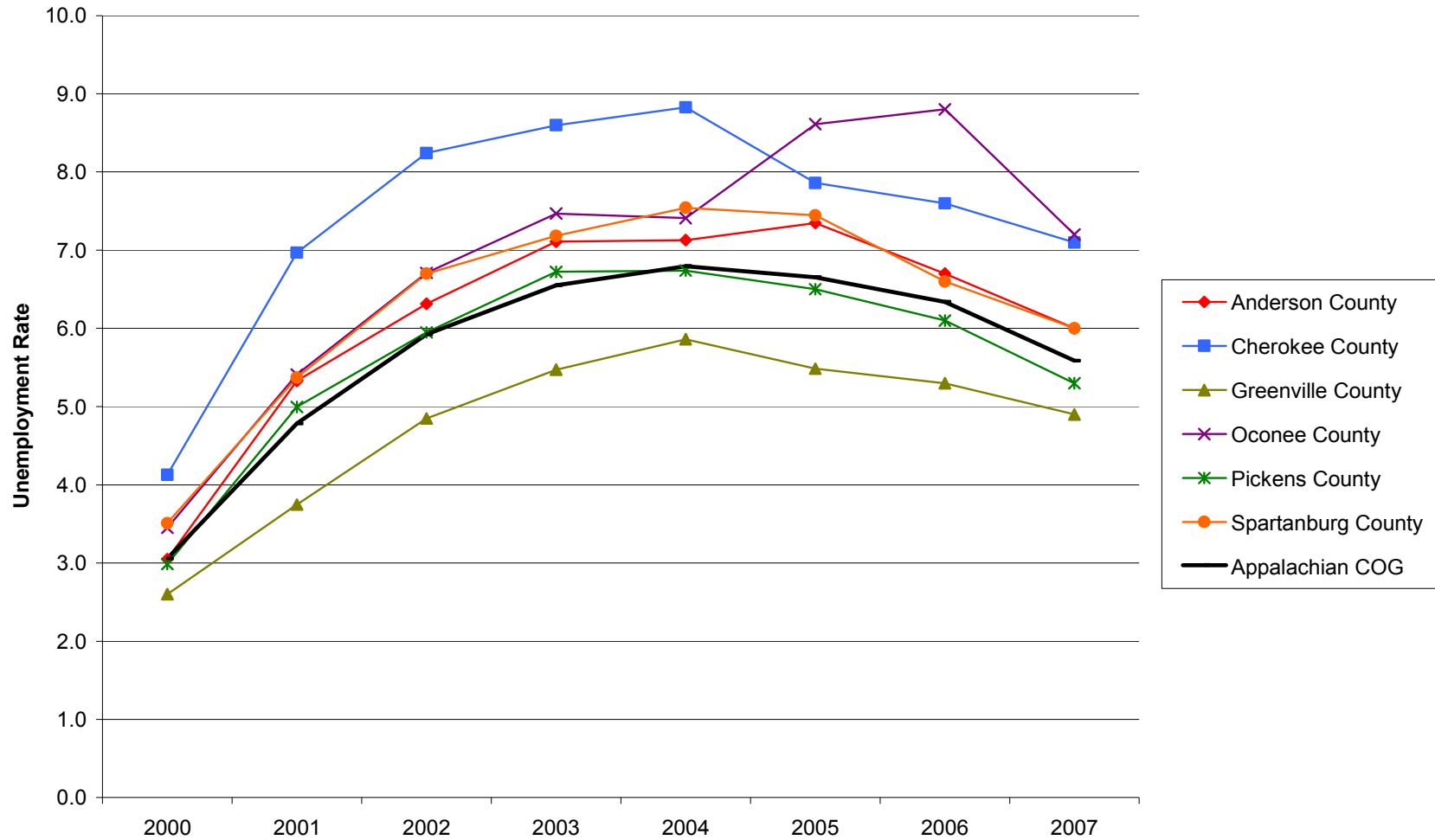
## Manufacturing Employment Trends in the Appalachian COG Region and Component Counties, 2000-2007

Source: Quarterly Census of Employment and Wages (2000-2007). U.S. Department of Labor, Bureau of Labor Statistics



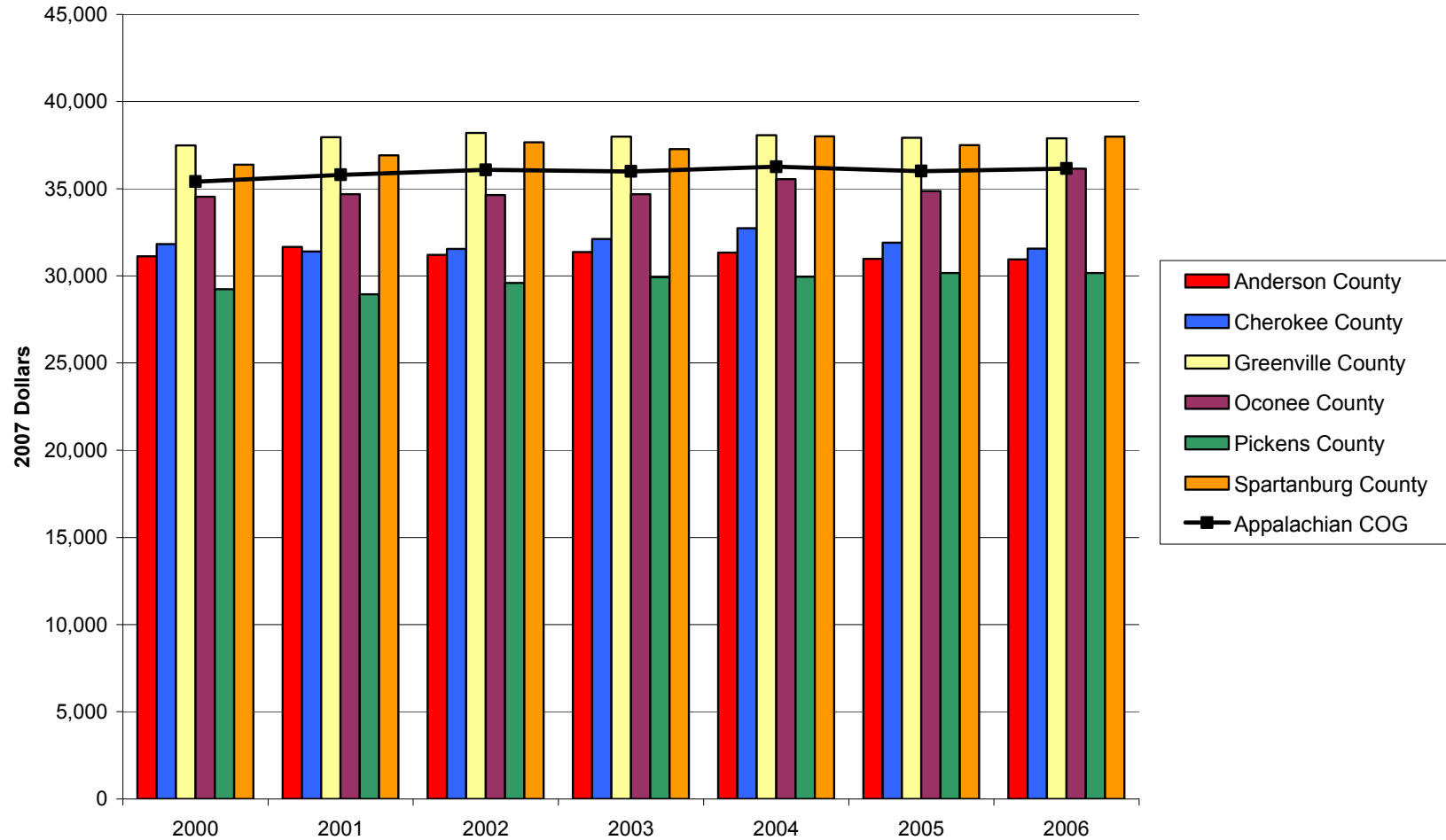
## Unemployment Rates in the Appalachian COG Region and Component Counties, 2000-2007

Source: Local Area Unemployment Statistics. U.S. Department of Labor, Bureau of Labor



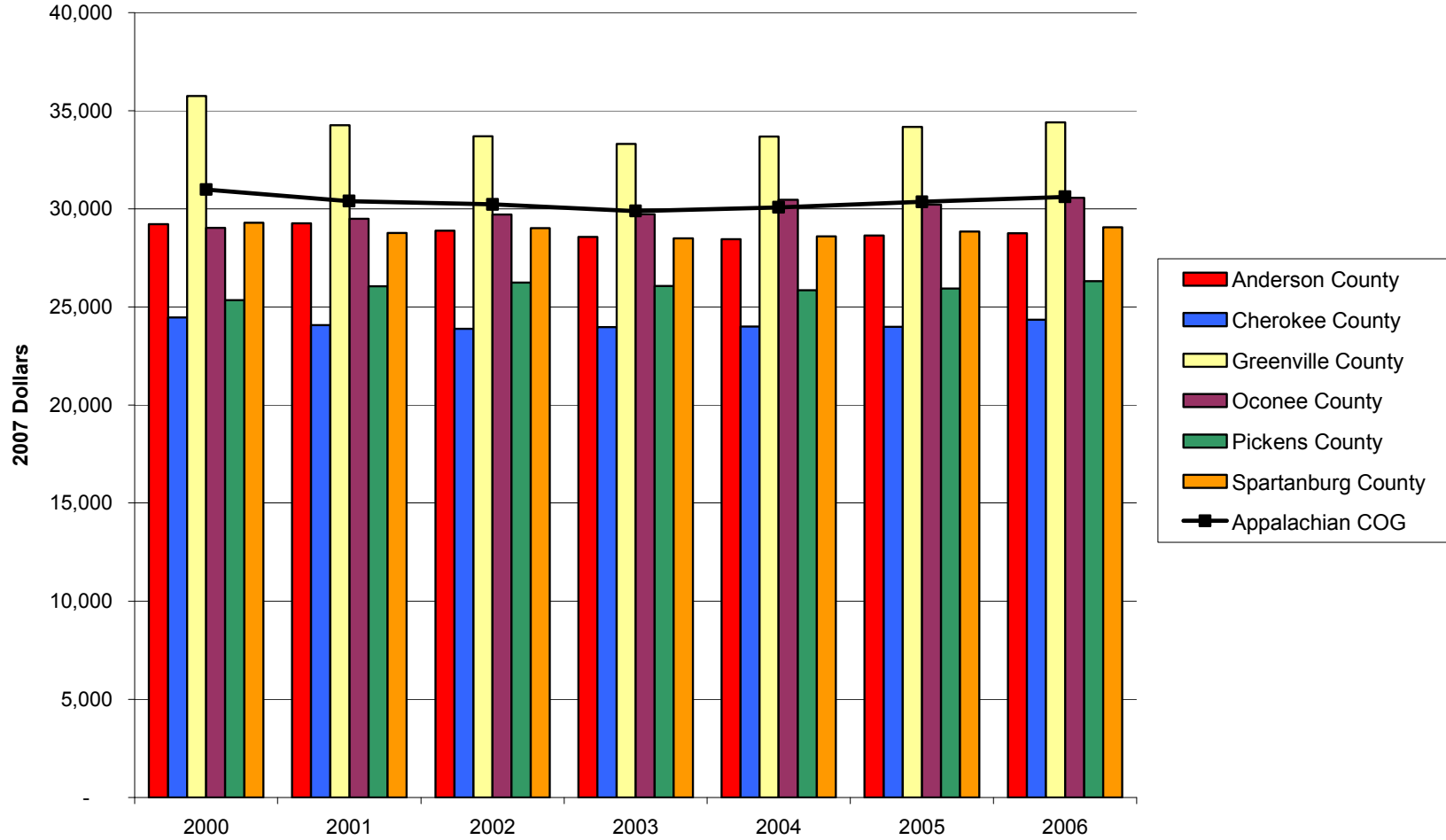
## Earnings per Worker in the Appalachian COG Region and Component Counties, 2000-2006

Source: Bureau of Economic Analysis, Regional Economic Information System (REIS): Table CA30



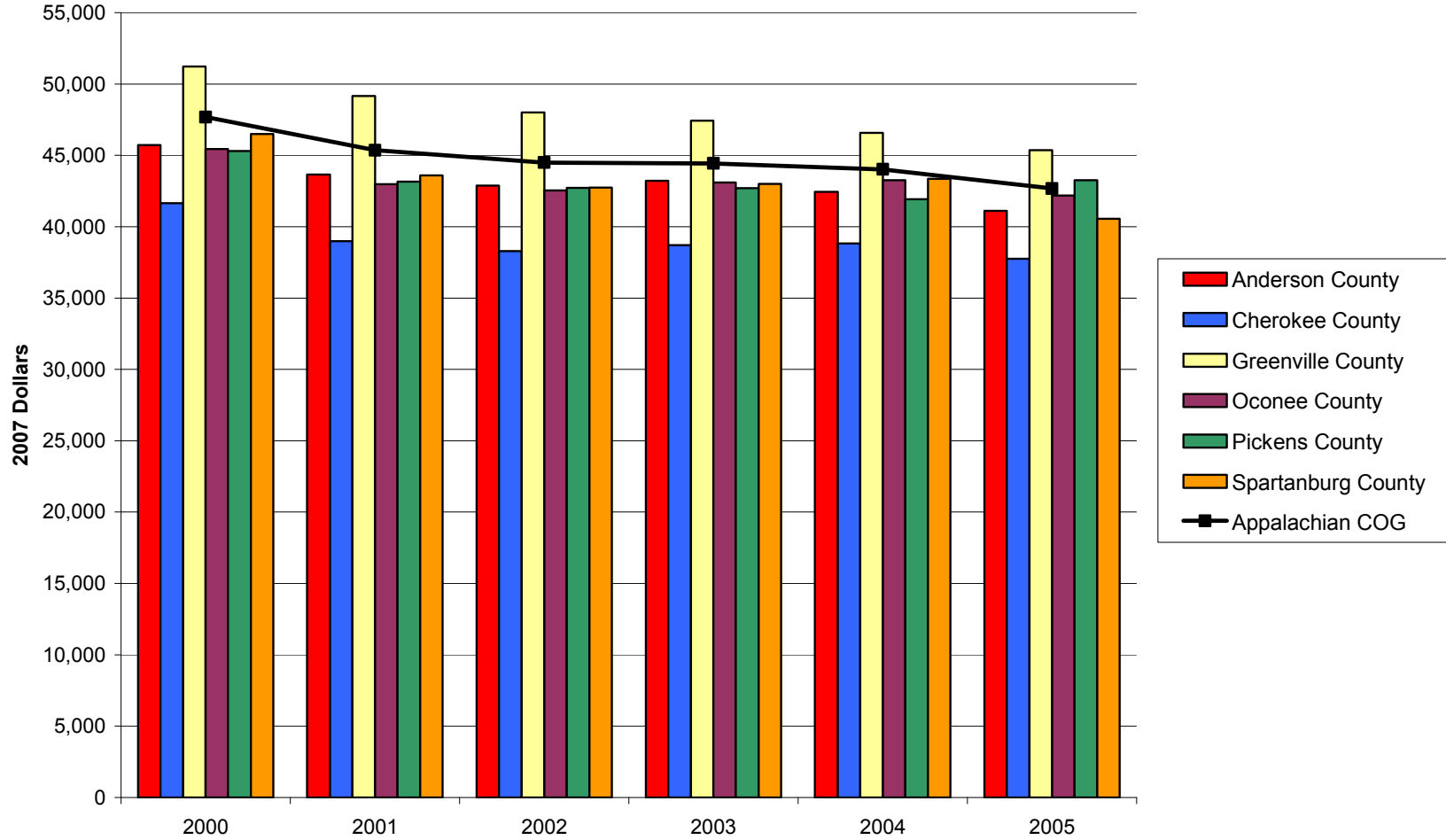
## Per Capita Income in the Appalachian COG Region and Component Counties, 2000-2006

Source: Bureau of Economic Analysis, Regional Economic Information System (REIS): Table



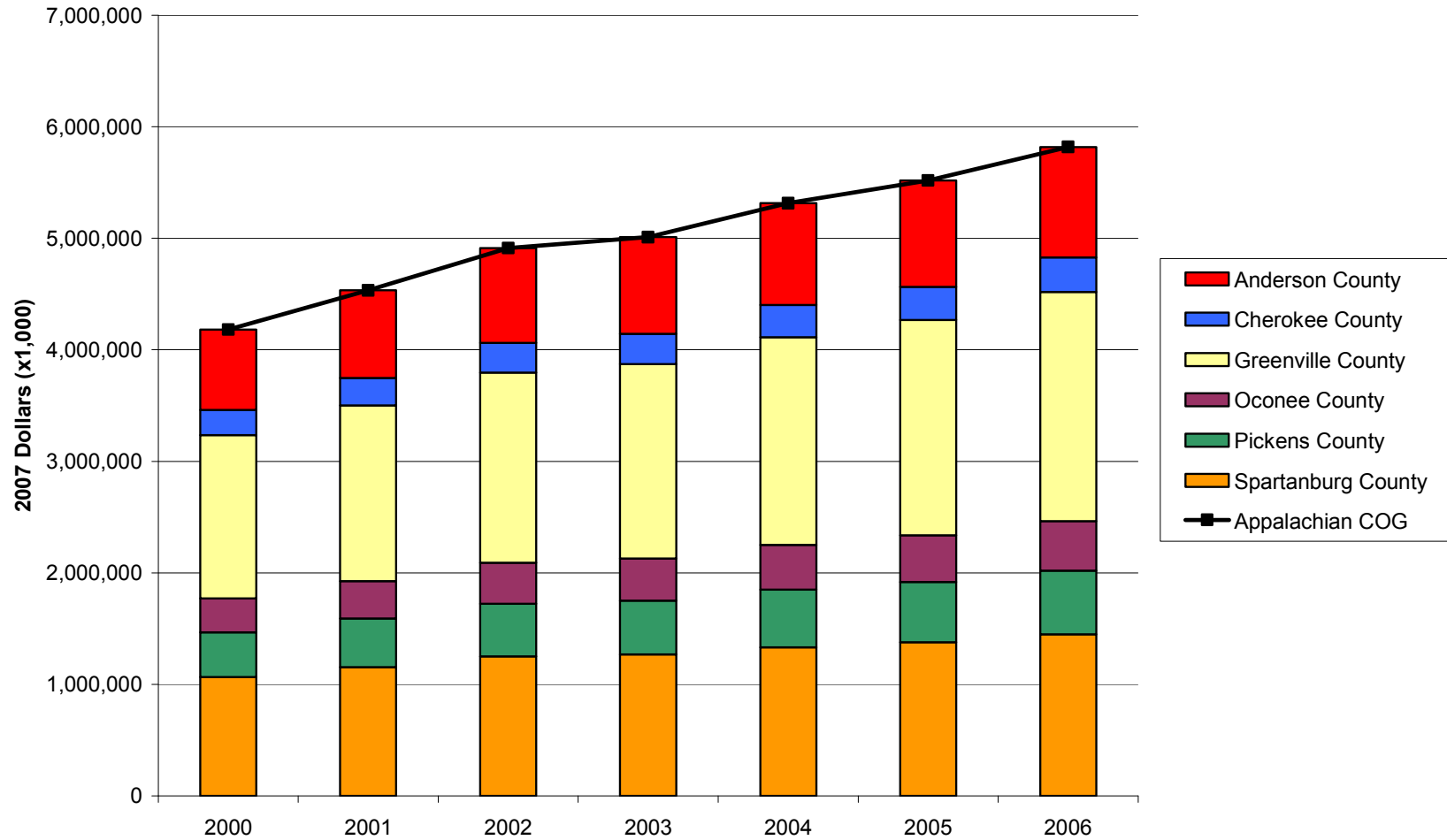
## Median Household Income in the Appalachian COG Region and Component Counties, 2000-2005

Source: U.S. Census Bureau, Small Area Income and Poverty Estimates



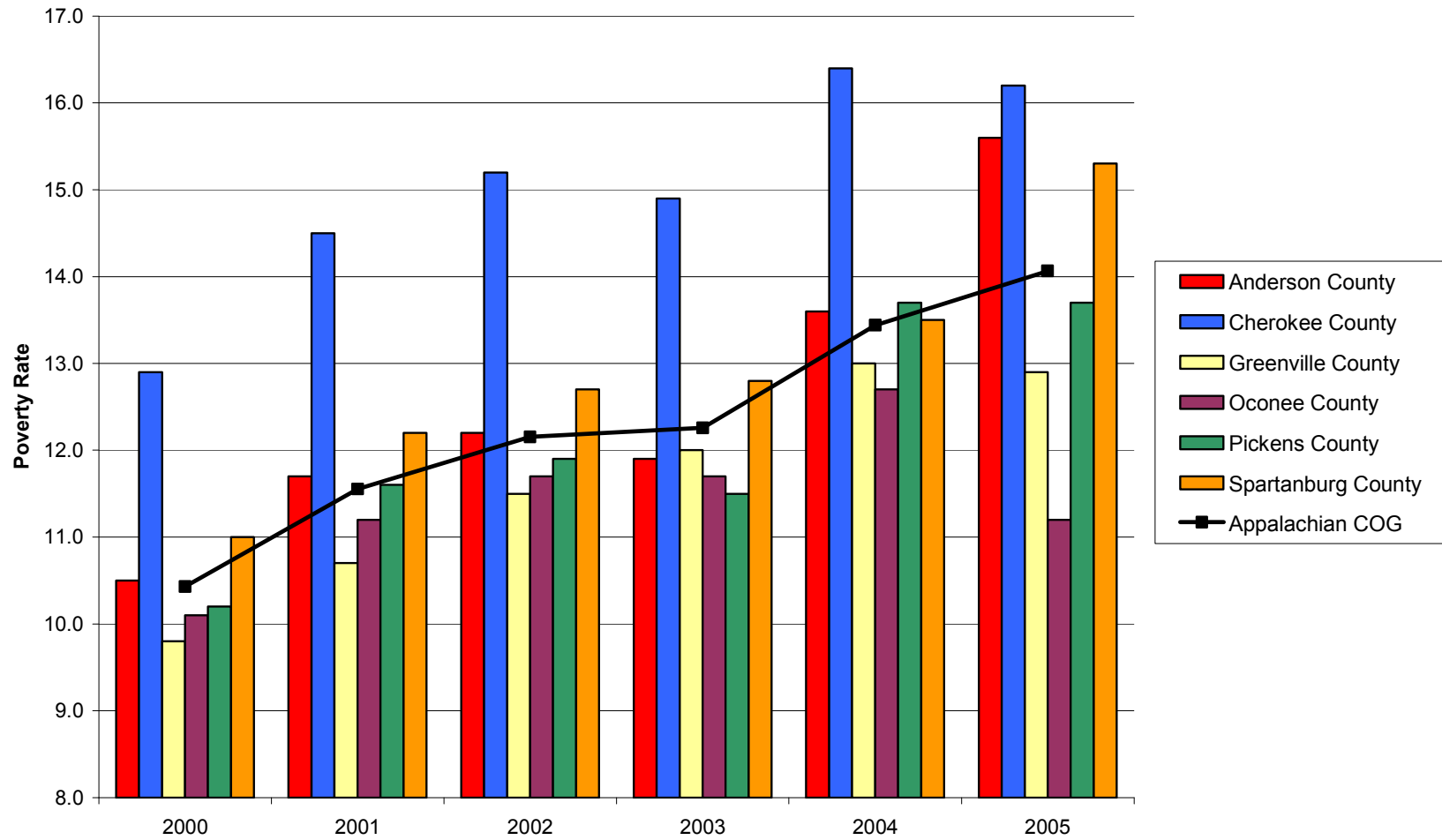
## Transfer Payments in the Appalachian COG Region and Component Counties, 2000-2006

Source: Bureau of Economic Analysis, Regional Economic Information System (REIS): Table CA35



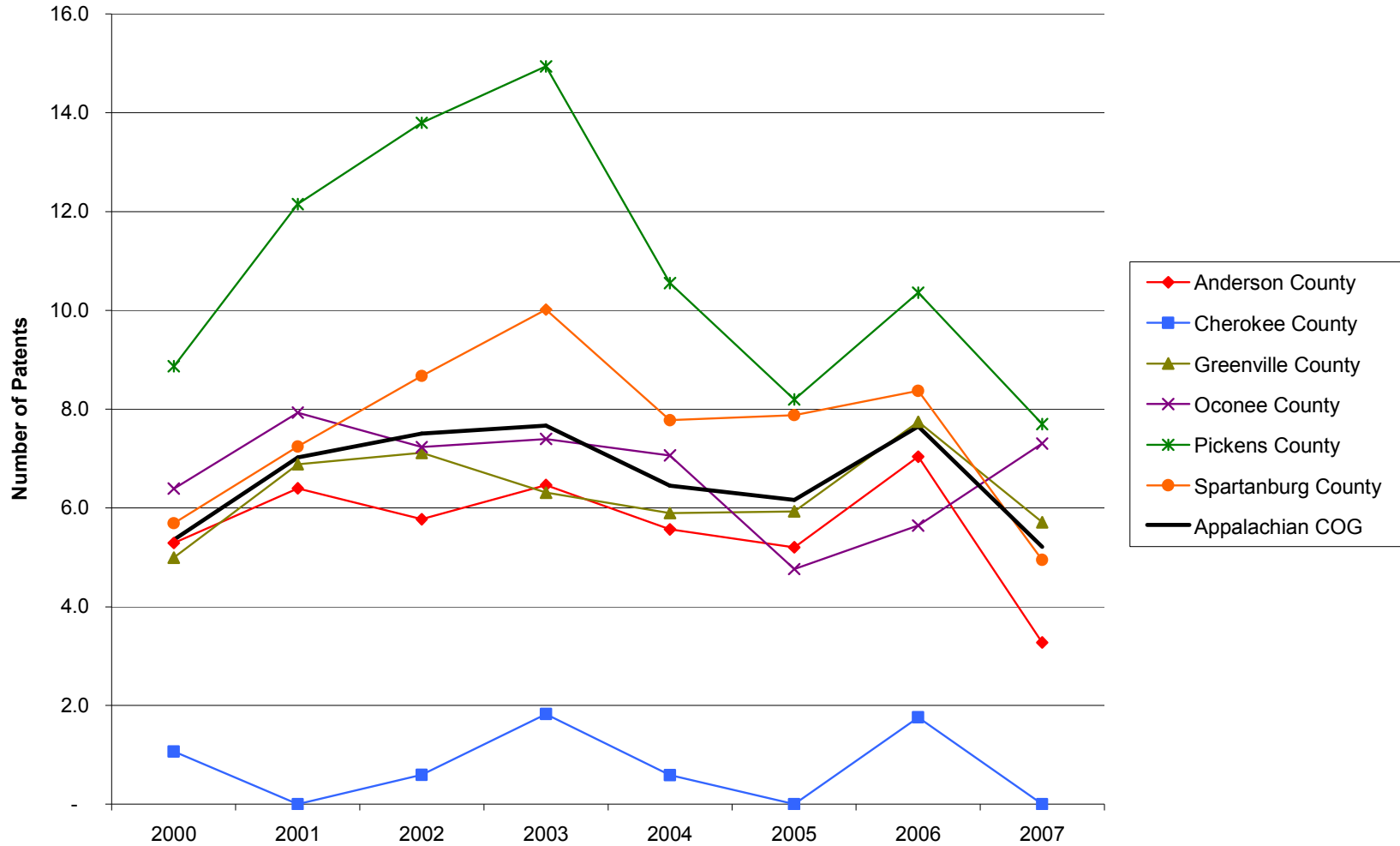
## Poverty Rates in the Appalachian COG Region and Component Counties, 2000-2005

Source: U.S. Census Bureau, Small Area Income and Poverty Estimates



### Patents per 10,000 Employees in the Appalachian COG Region and Component Counties, 2000-2007

Source: United States Patent and Trademark Office, Patent Electronic Business Center



### SBIR/STTR Phase I and II Awards per 1,000 Employees in the Appalachian COG Region and Component Counties, 2000-2006

Source: U.S. Small Business Administration, Technology Resources Network

