

A. Economic Indicators: Establishments and Employment, Berkley-Charleston-Dorchester COG

Indicator	Geographic Area	Year					Percent Change	
		2000	2004	2005	2006	2007	2000-2007	2006-2007
Private Establishments		2000	2004	2005	2006	2007	2000-2007	2006-2007
	Berkeley County	1,793	1,865	2,043	2,337	2,133	19.0%	-8.7%
	Charleston County	11,370	11,552	12,187	13,294	11,979	5.4%	-9.9%
	Dorchester County	1,880	1,964	2,131	2,372	2,095	11.4%	-11.7%
	B-C-D COG	15,043	15,381	16,361	18,003	16,207	7.7%	-10.0%
	South Carolina	110,221	108,929	115,194	125,222	113,254	2.8%	-9.6%
	United States	7,646,318	8,093,142	8,294,662	8,505,496	8,680,218	13.5%	2.1%
Employment		2000	2004	2005	2006	2007	2000-2007	2006-2007
	Berkeley County	25,312	27,242	28,449	29,638	30,934	22.2%	4.4%
	Charleston County	145,445	154,212	158,544	163,973	170,455	17.2%	4.0%
	Dorchester County	21,067	24,222	24,694	24,962	25,249	19.9%	1.1%
	B-C-D COG	191,824	205,676	211,687	218,573	226,638	18.1%	3.7%
	South Carolina	1,507,621	1,476,668	1,500,676	1,534,903	1,563,381	3.7%	1.9%
	United States	110,023,983	108,490,066	110,611,016	112,718,858	114,014,680	3.6%	1.1%
Manufacturing Employment		2000	2004	2005	2006	2007	2000-2007	2006-2007
	Berkeley County	7,817	6,322	6,274	6,321	6,214	-20.5%	-1.7%
	Charleston County	9,567	9,021	9,474	9,824	11,363	18.8%	15.7%
	Dorchester County	4,828	5,474	5,406	5,079	4,837	0.2%	-4.8%
	B-C-D COG	22,212	20,817	21,154	21,224	22,414	0.9%	5.6%

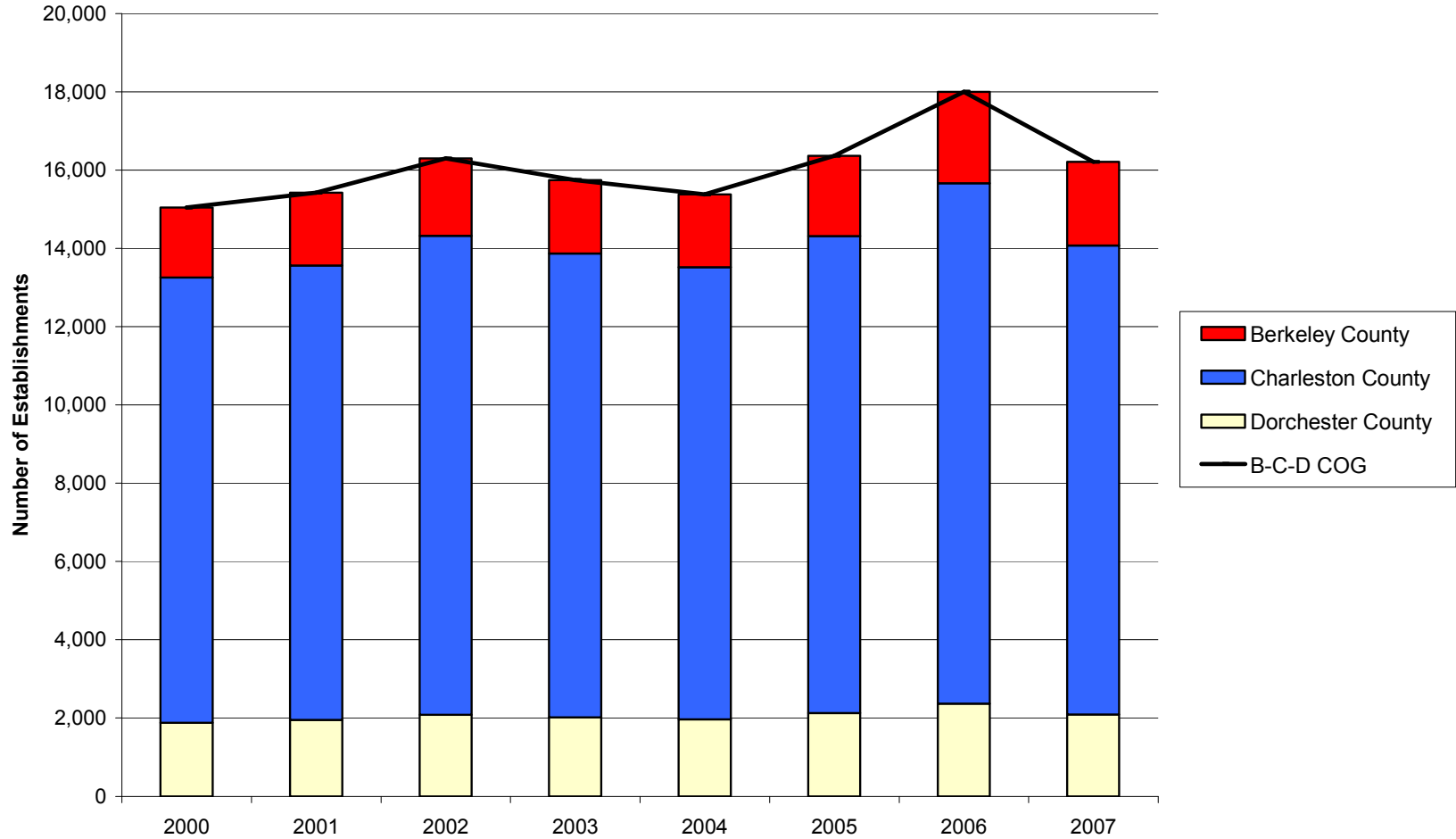
South Carolina	335,118	267,426	262,714	253,811	249,647	-25.5%	-1.6%
United States	17,314,423	14,257,380	14,190,394	14,110,663	13,834,745	-20.1%	-2.0%

Unemployment	2000	2004	2005	2006	2007	2000- 2007	2006- 2007
Berkeley County	2,100	3,875	3,816	4,023	3,699	76.1%	-8.1%
Charleston County	4,902	8,890	9,106	8,448	7,804	59.2%	-7.6%
Dorchester County	1,407	2,710	3,004	3,037	2,823	100.6%	-7.0%
B-C-D COG	8,409	15,475	15,926	15,985	14,326	70.4%	-10.4%
South Carolina	70,821	138,938	139,693	134,523	125,262	76.9%	-6.9%
United States	5,692,000	8,149,000	7,591,000	7,001,000	7,078,000	24.3%	1.1%

Unemployment Rate	2000	2004	2005	2006	2007	Rate Change	
						2000- 2007	2006- 2007
Berkeley County	3.2	5.5	5.3	5.5	4.9	1.7	-0.6
Charleston County	3.2	5.4	5.4	5.0	4.5	1.3	-0.5
Dorchester County	3.0	5.1	5.3	5.0	4.5	1.5	-0.5
B-C-D COG	3.2	5.4	5.4	5.2	4.6	1.4	-0.6
South Carolina	3.6	6.8	6.7	6.4	5.9	2.3	-0.5
United States	4.0	5.5	5.1	4.6	4.6	0.6	0.0

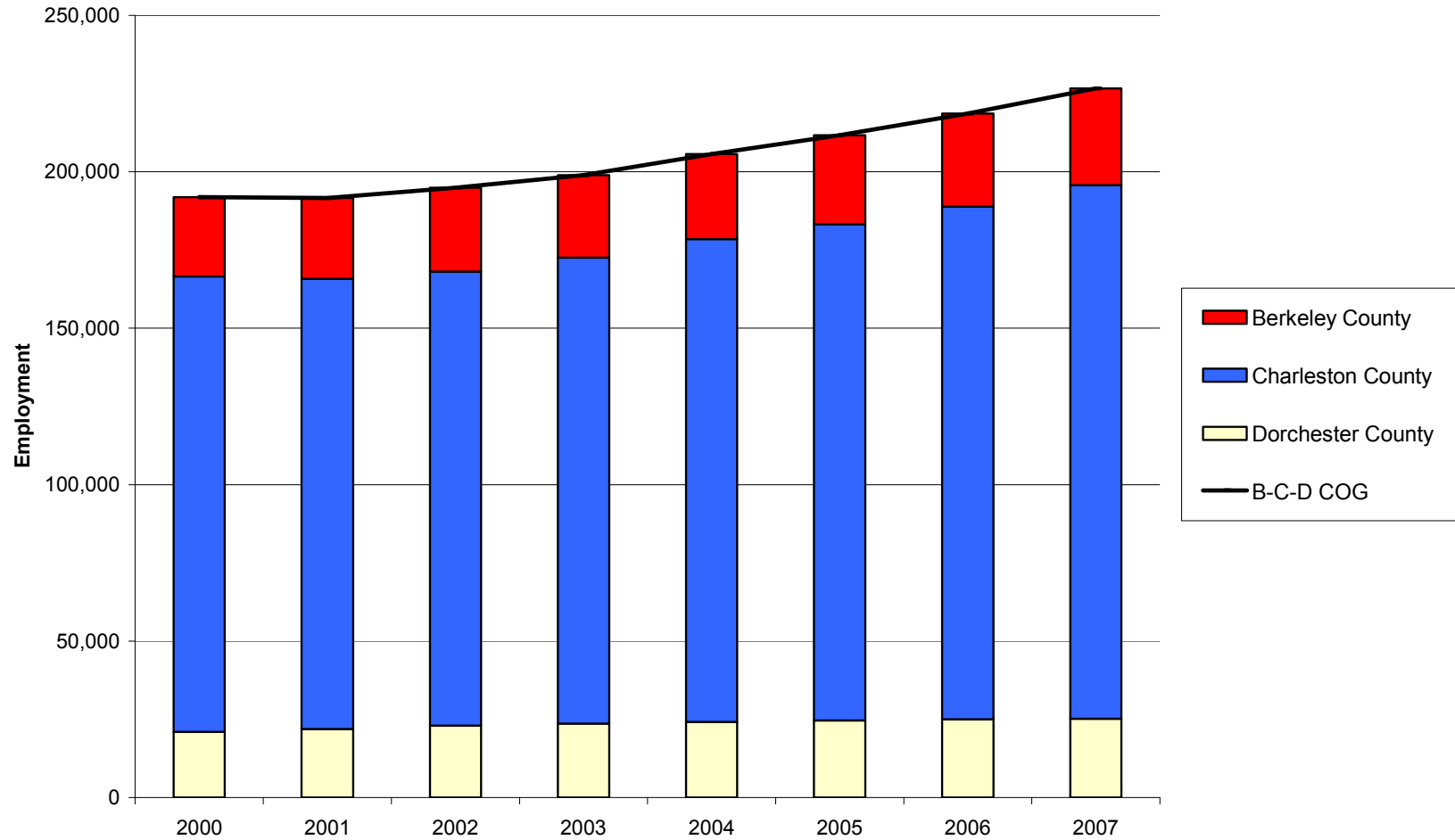
Private Establishments in the Berkley-Charleston-Dorchester COG Region and Component Counties, 2000-2007

Source: Quarterly Census of Employment and Wages (2000-2007). U.S. Department of Labor, Bureau of Labor Statistics



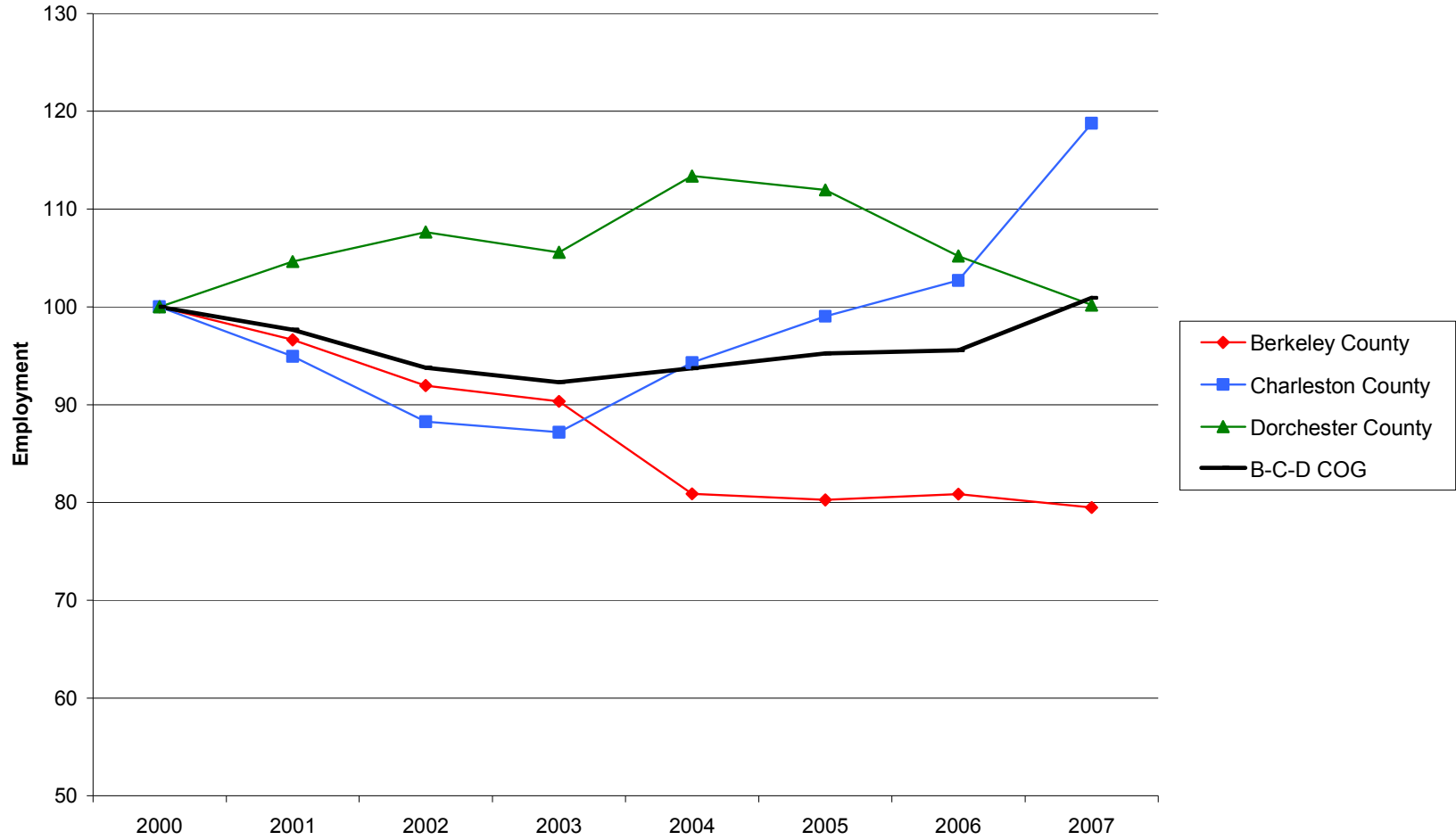
Private Employment in the Berkley-Charleston-Dorchester COG Region and Component Counties, 2000-2007

Source: Quarterly Census of Employment and Wages (2000-2007). U.S. Department of Labor, Bureau of Labor Statistics



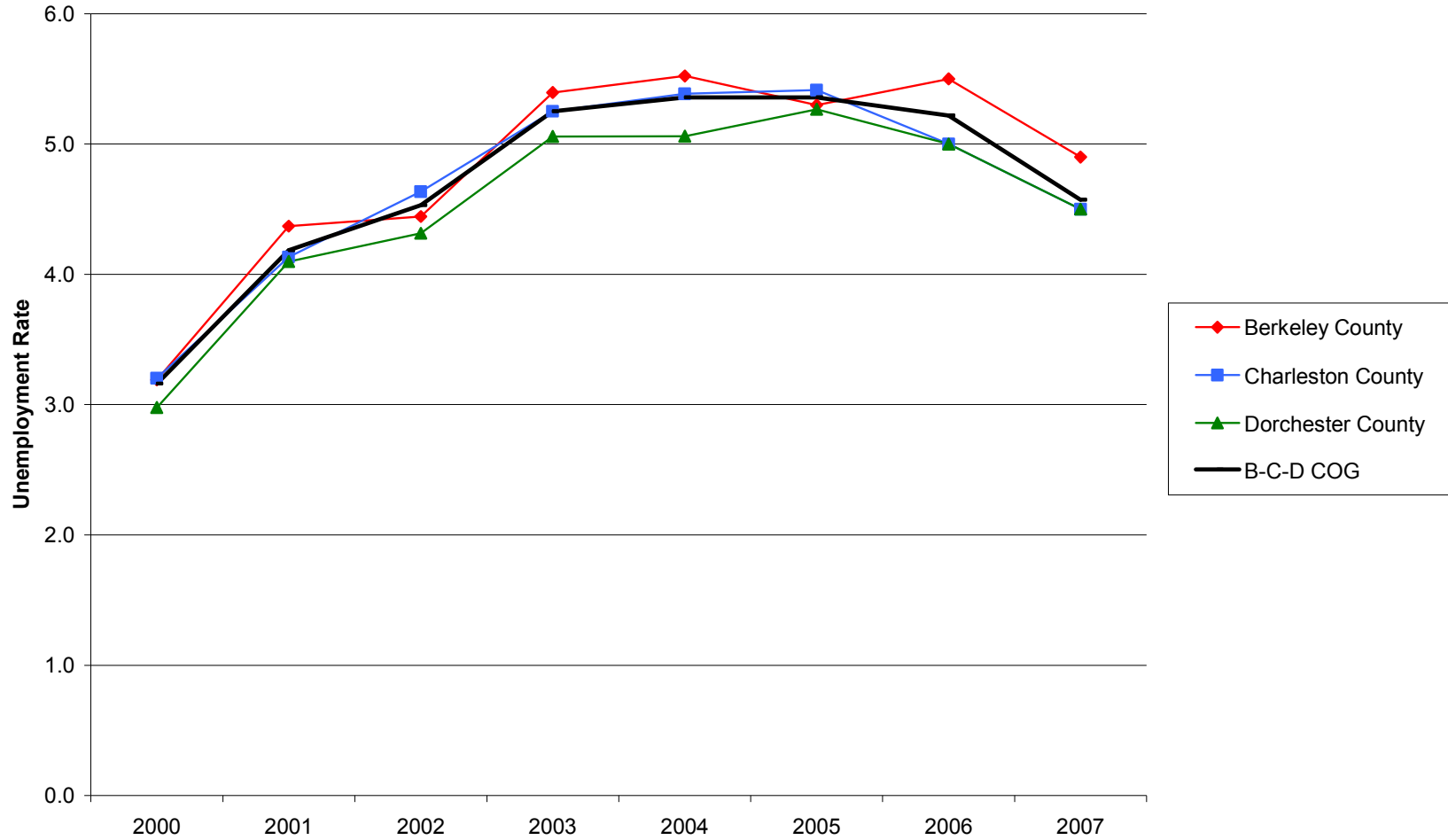
Manufacturing Employment Trends in the Berkley-Charleston-Dorchester COG Region and Component Counties, 2000-2007

Source: Quarterly Census of Employment and Wages (2000-2007). U.S. Department of Labor, Bureau of Labor Statistics



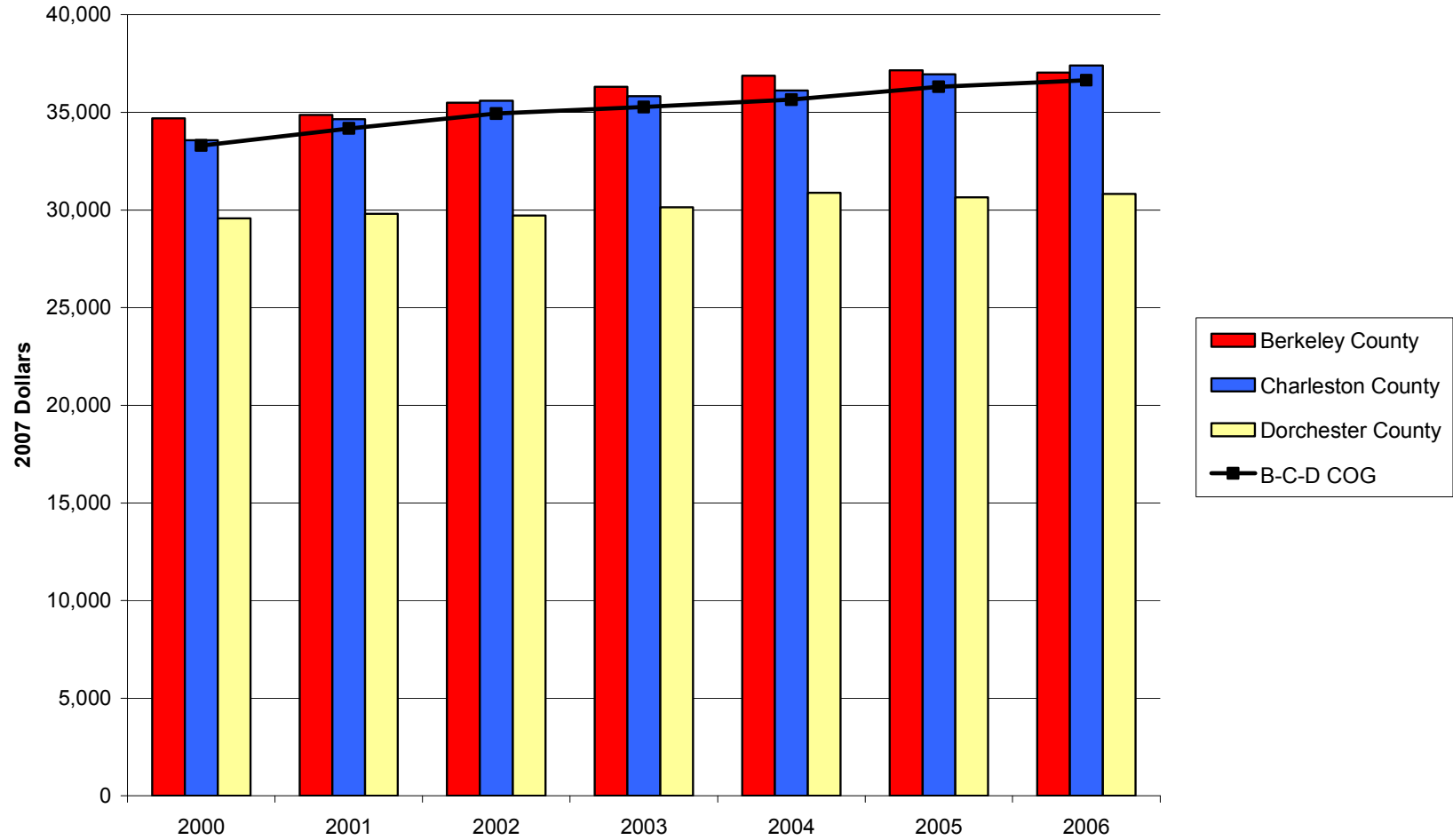
Unemployment Rates in the Berkley-Charleston-Dorchester COG Region and Component Counties, 2000-2007

Source: Local Area Unemployment Statistics. U.S. Department of Labor, Bureau of Labor Statistics



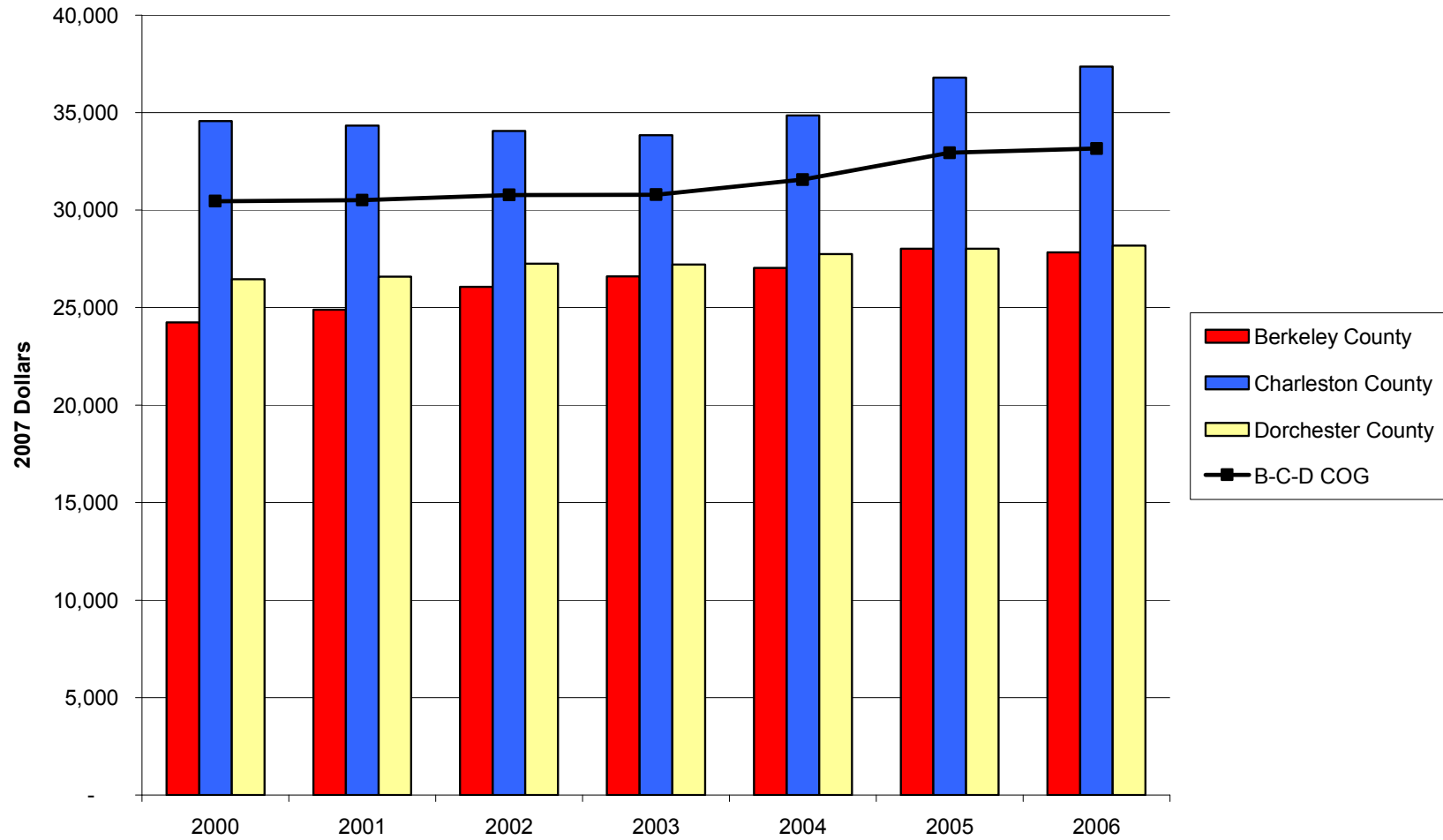
Earnings per Worker in the Berkley-Charleston-Dorchester COG Region and Component Counties, 2000-2006

Source: Bureau of Economic Analysis, Regional Economic Information System (REIS): Table CA30



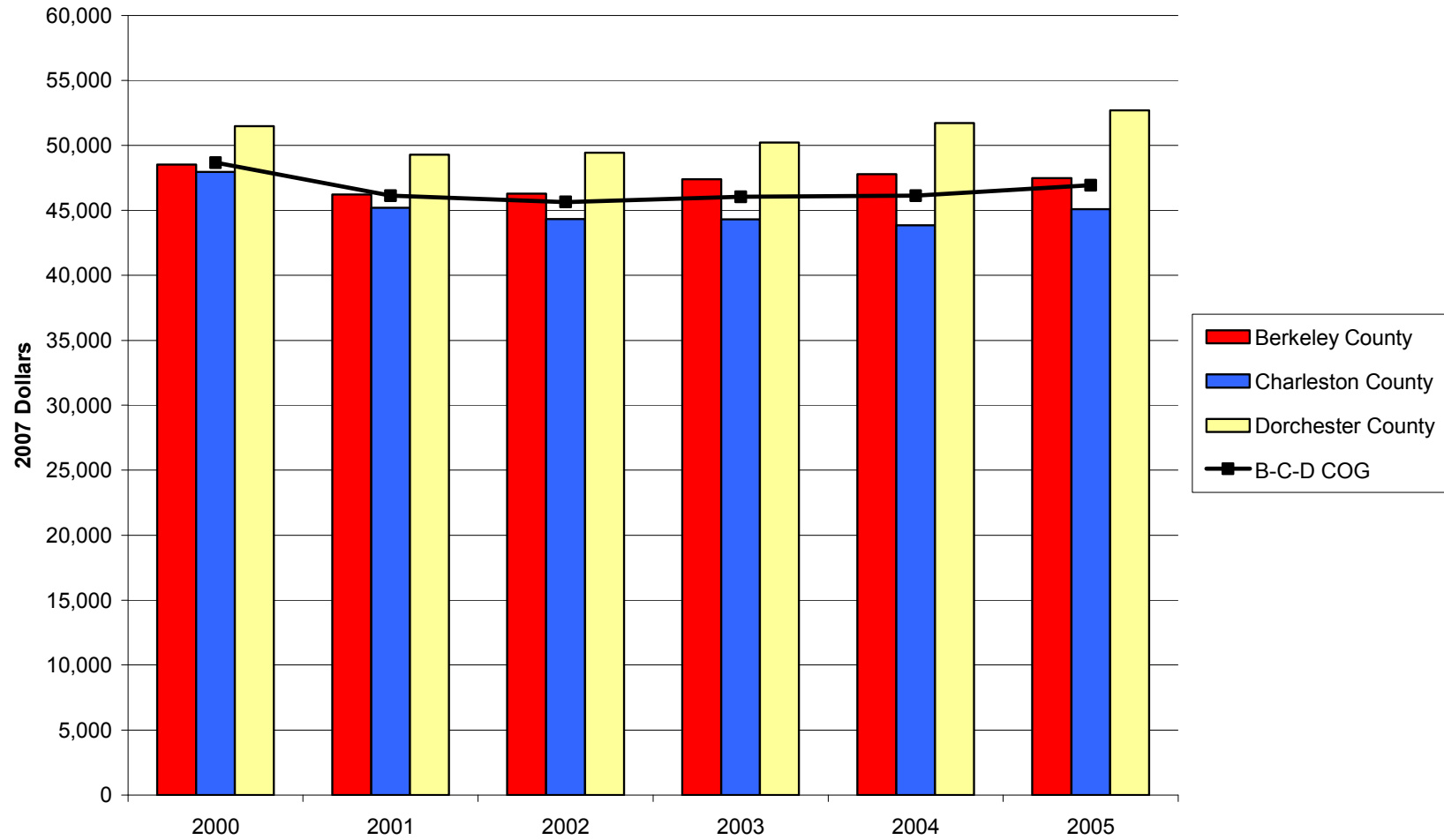
Per Capita Income in the Berkley-Charleston-Dorchester COG Region and Component Counties, 2000-2006

Source: Bureau of Economic Analysis, Regional Economic Information System (REIS): Table CA31-3



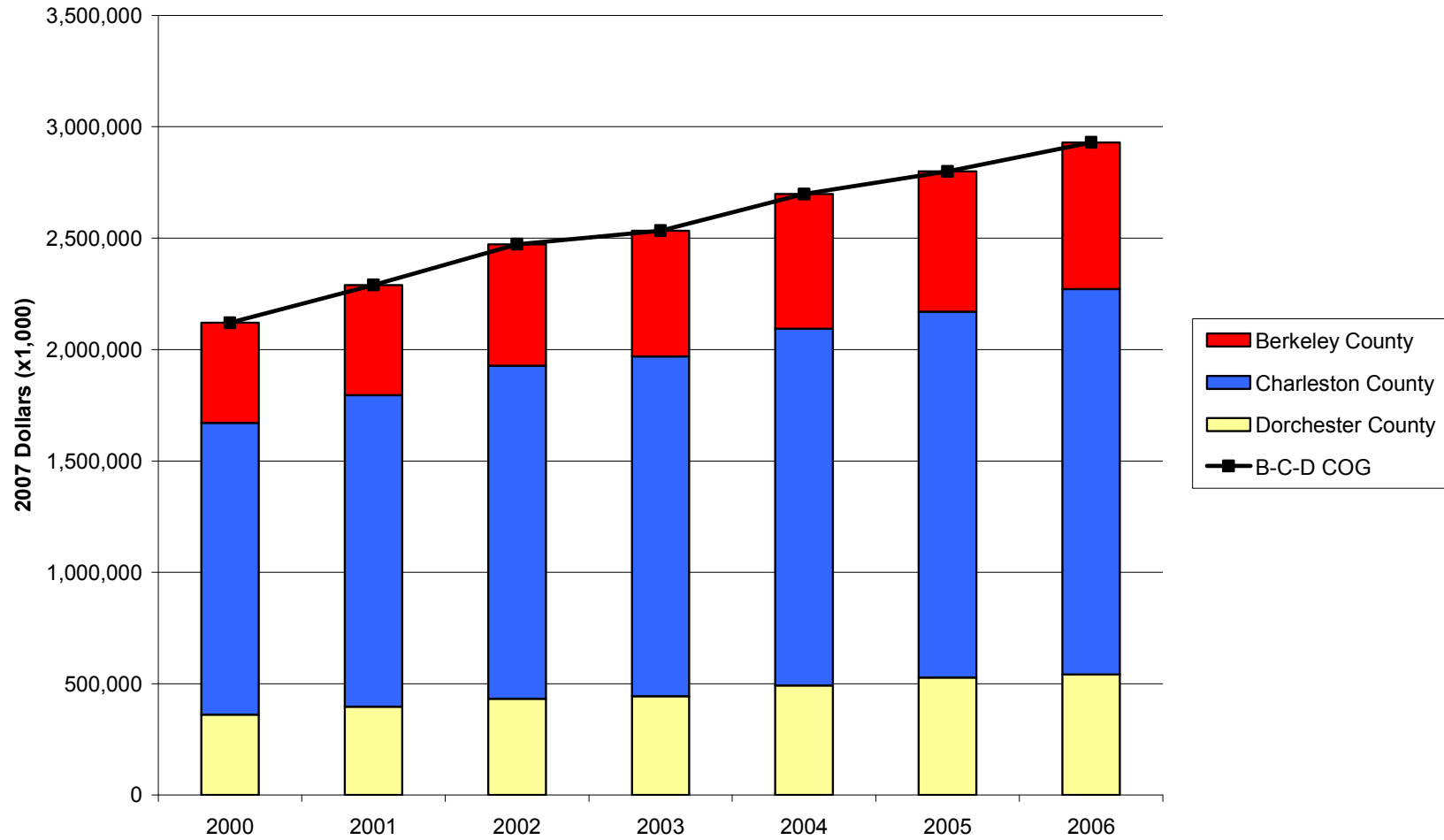
Median Household Income in the Berkley-Charleston-Dorchester COG Region and Component Counties, 2000-2005

Source: U.S. Census Bureau, Small Area Income and Poverty Estimates



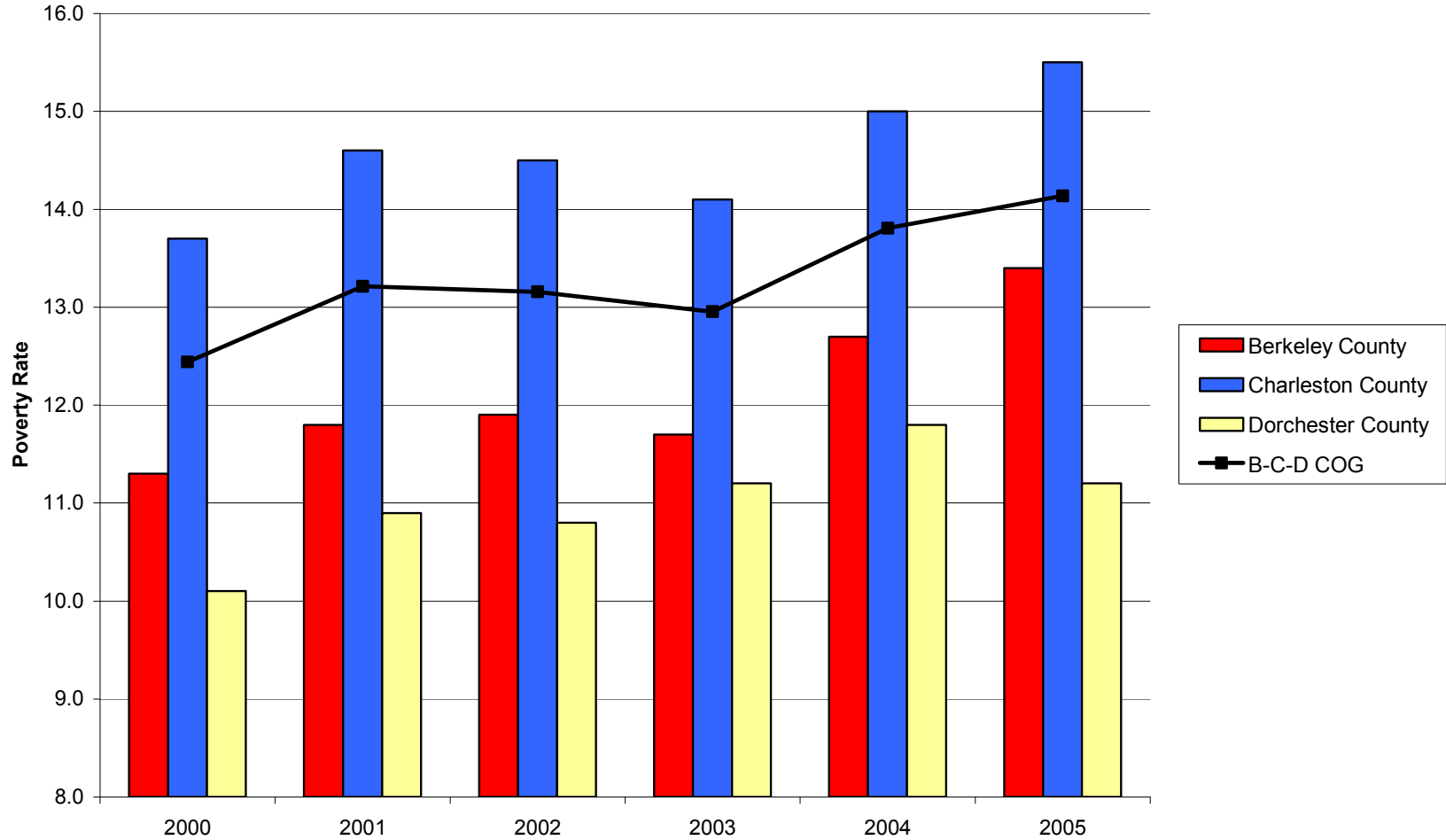
Transfer Payments in the Berkley-Charleston-Dorchester COG Region and Component Counties, 2000-2006

Source: Bureau of Economic Analysis, Regional Economic Information System (REIS): Table CA35



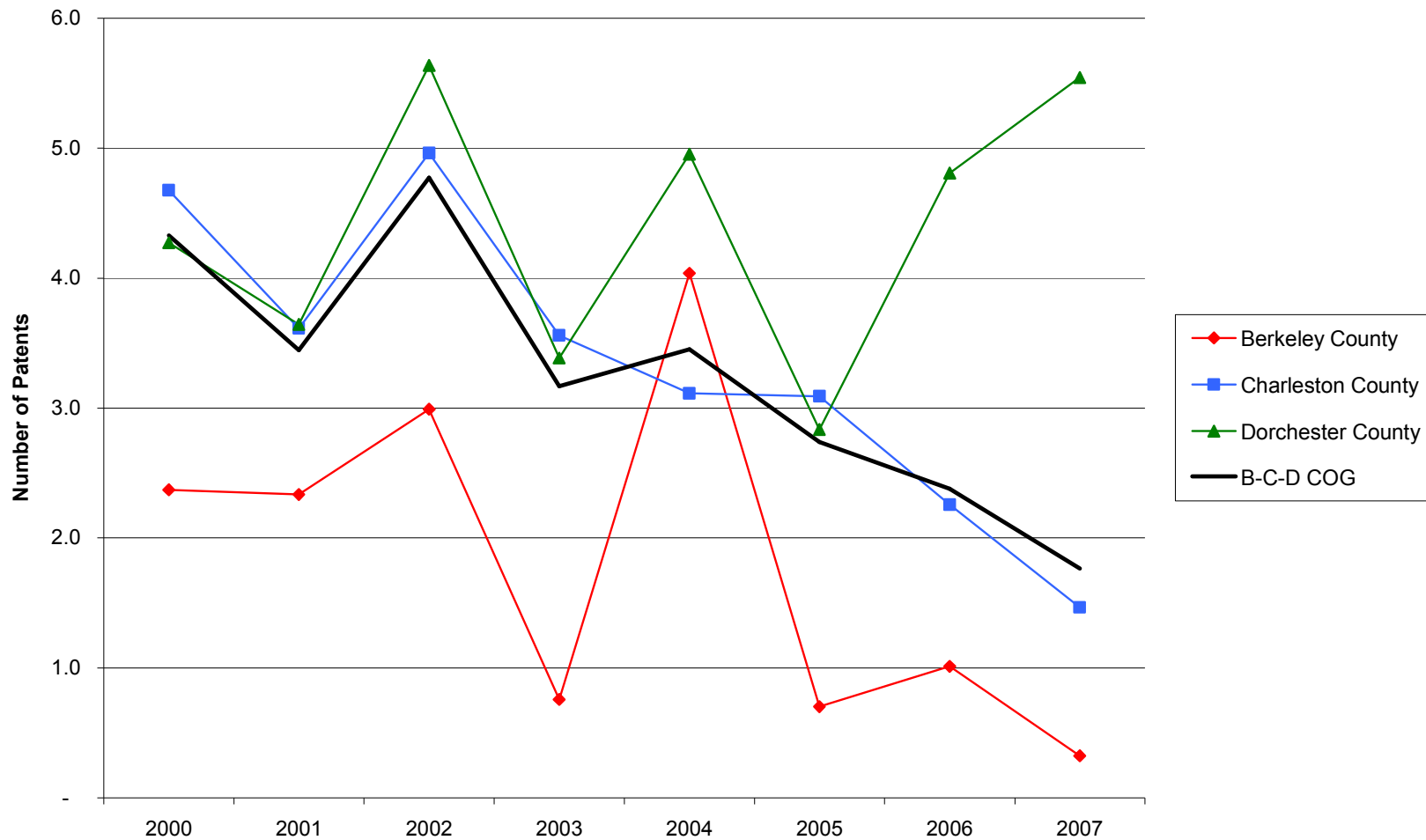
Poverty Rates in the Berkley-Charleston-Dorchester COG Region and Component Counties, 2000-2005

Source: U.S. Census Bureau, Small Area Income and Poverty Estimates



Patents per 10,000 Employees in the Berkley-Charleston-Dorchester COG Region and Component Counties, 2000-2007

Source: United States Patent and Trademark Office, Patent Electronic Business Center



SBIR/STTR Phase I and II Awards per 1,000 Employees in the Berkley-Charleston-Dorchester COG Region and Component Counties, 2000-2006

Source: U.S. Small Business Administration, Technology Resources Network

