

A. Economic Indicators: Establishments and Employment, Catawba COG

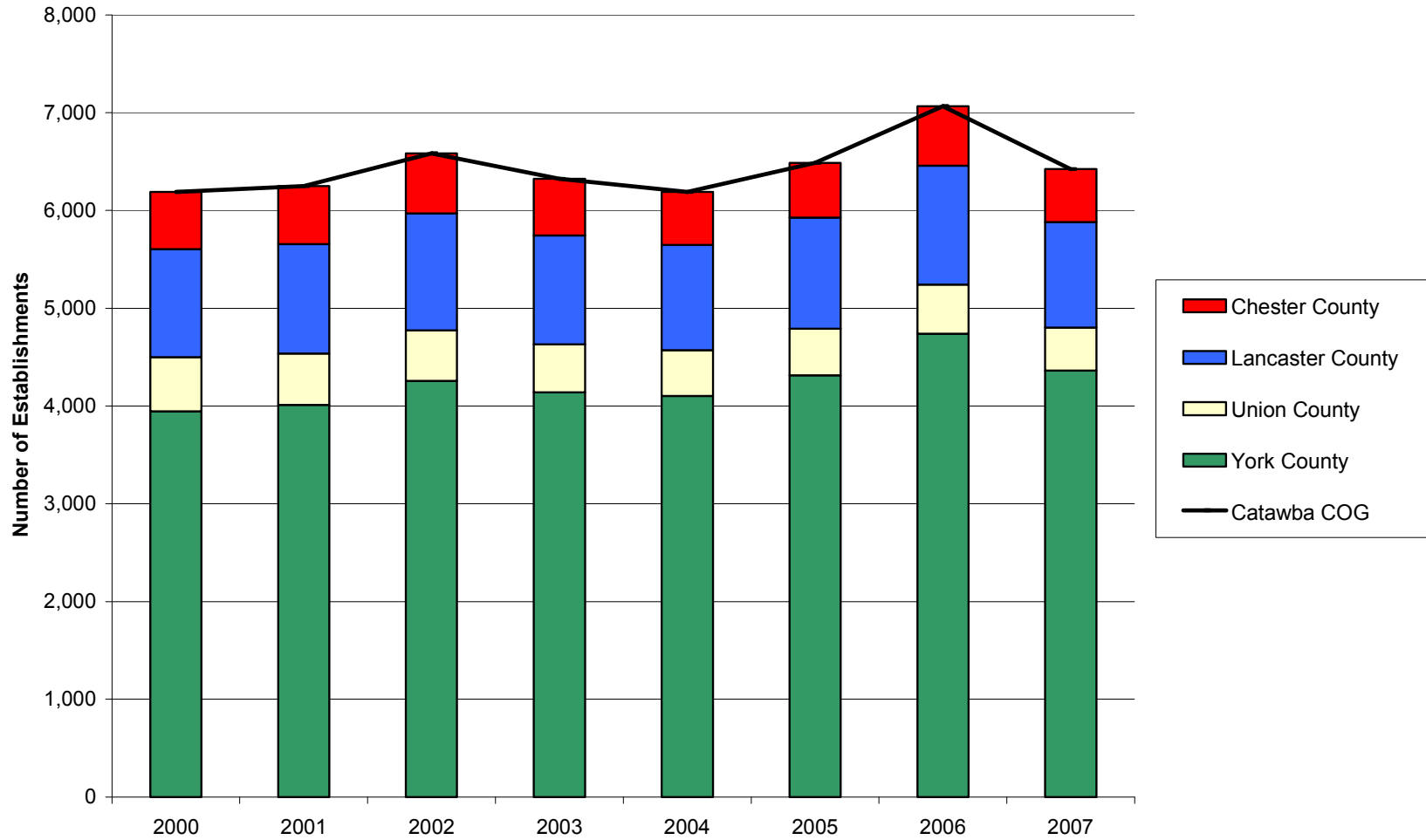
Indicator	Geographic Area	Year					Percent Change	
		2000	2004	2005	2006	2007	2000-2007	2006-2007
Private Establishments		2000	2004	2005	2006	2007	2000-2007	2006-2007
	Chester County	585	540	558	609	541	-7.5%	-11.2%
	Lancaster County	1,104	1,079	1,137	1,216	1,077	-2.4%	-11.4%
	Union County	553	467	478	502	441	-20.3%	-12.2%
	York County	3,945	4,102	4,313	4,739	4,362	10.6%	-8.0%
	Catawba COG	6,187	6,188	6,486	7,066	6,421	3.8%	-9.1%
	South Carolina	110,221	108,929	115,194	125,222	113,254	2.8%	-9.6%
	United States	7,646,318	8,093,142	8,294,662	8,505,496	8,680,218	13.5%	2.1%
Employment		2000	2004	2005	2006	2007	2000-2007	2006-2007
	Chester County	10,002	8,560	9,127	8,925	7,866	-21.4%	-11.9%
	Lancaster County	16,320	14,276	14,066	14,101	13,141	-19.5%	-6.8%
	Union County	7,885	6,279	6,057	5,537	5,223	-33.8%	-5.7%
	York County	51,154	55,675	57,038	60,132	62,051	21.3%	3.2%
	Catawba COG	85,361	84,790	86,288	88,695	88,281	3.4%	-0.5%
	South Carolina	1,507,621	1,476,668	1,500,676	1,534,903	1,563,381	3.7%	1.9%
	United States	110,023,983	108,490,066	110,611,016	112,718,858	114,014,680	3.6%	1.1%
Manufacturing Employment		2000	2004	2005	2006	2007	2000-2007	2006-2007
	Chester County	5,463	3,902	4,165	3,892	3,171	-42.0%	-18.5%
	Lancaster County	6,169	4,489	4,346	3,952	3,221	-47.8%	-18.5%
	Union County	3,853	2,717	2,471	2,069	1,949	-49.4%	-5.8%
	York County	11,590	9,724	10,131	10,313	10,269	-11.4%	-0.4%
	Catawba COG	27,075	20,832	21,113	20,226	18,610	-31.3%	-8.0%
	South Carolina	335,118	267,426	262,714	253,811	249,647	-25.5%	-1.6%
	United States	17,314,423	14,257,380	14,190,394	14,110,663	13,834,745	-20.1%	-2.0%

Unemployment	2000	2004	2005	2006	2007	2000-2007	2006-2007
Chester County	819	1,540	1,462	1,633	1,764	115.4%	8.0%
Lancaster County	1,085	2,629	2,491	2,725	2,845	162.2%	4.4%
Union County	713	1,575	1,374	1,327	1,109	55.5%	-16.4%
York County	2,801	6,820	6,414	6,366	5,804	107.2%	-8.8%
Catawba COG	5,418	12,564	11,741	12,313	11,522	112.7%	-6.4%
South Carolina	70,821	138,938	139,693	134,523	125,262	76.9%	-6.9%
United States	5,692,000	8,149,000	7,591,000	7,001,000	7,078,000	24.3%	1.1%

Unemployment Rate	2000	2004	2005	2006	2007	Rate Change	
						2000-2007	2006-2007
Chester County	5.0	9.8	9.2	10.1	11.2	6.2	1.1
Lancaster County	3.6	8.8	8.3	8.9	9.5	5.9	0.6
Union County	5.0	12.1	10.8	10.8	9.5	4.5	-1.3
York County	3.2	7.2	6.6	6.3	5.6	2.4	-0.7
Catawba COG	3.6	8.2	7.6	7.7	7.1	3.5	-0.5
South Carolina	3.6	6.8	6.7	6.4	5.9	2.3	-0.5
United States	4.0	5.5	5.1	4.6	4.6	0.6	0.0

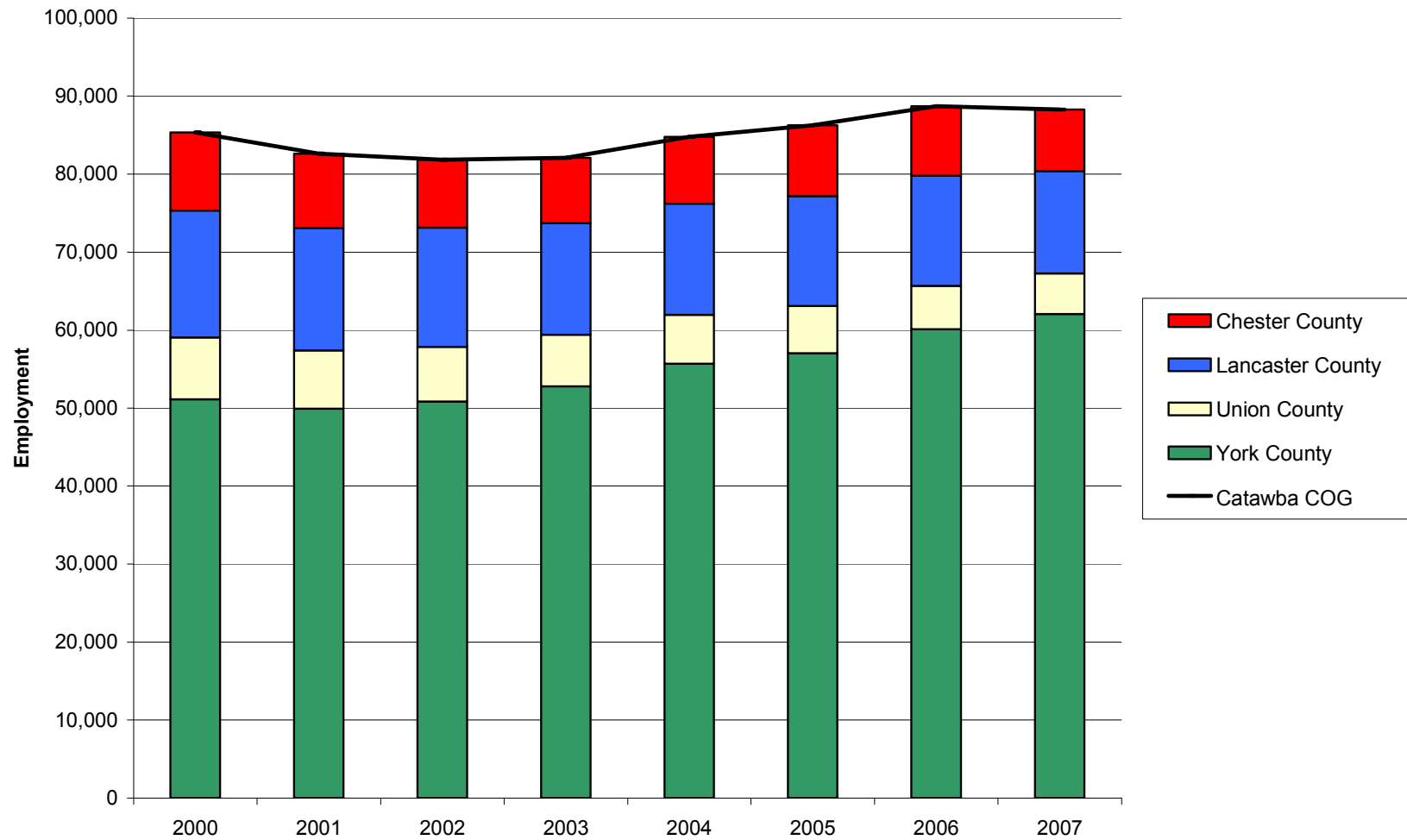
Private Establishments in the Catawba COG Region and Component Counties, 2000-2007

Source: Quarterly Census of Employment and Wages (2000-2007). U.S. Department of Labor, Bureau of Labor Statistics



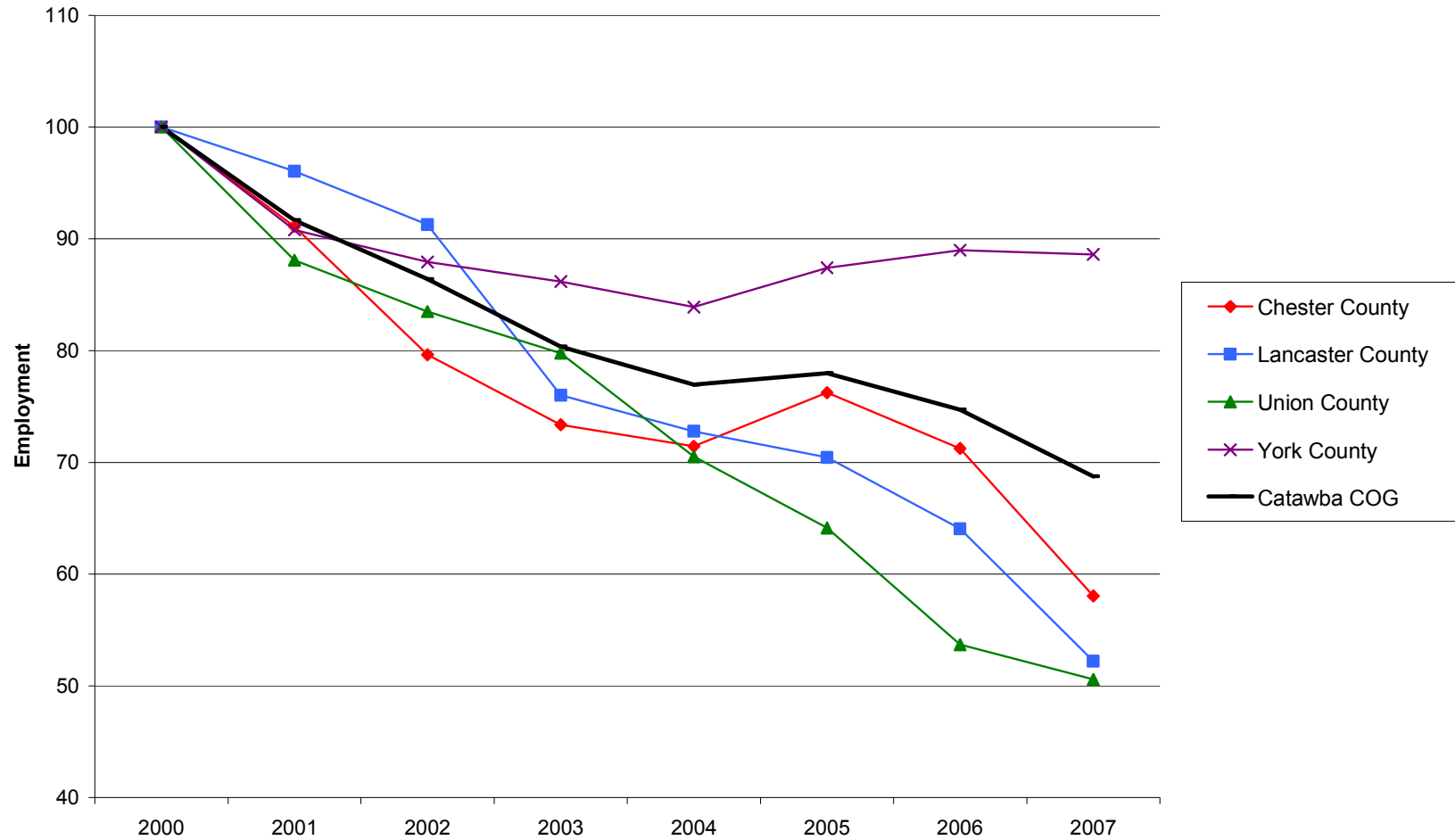
Private Employment in the Catawba COG Region and Component Counties, 2000-2007

Source: Quarterly Census of Employment and Wages (2000-2007). U.S. Department of Labor, Bureau of Labor Statistics



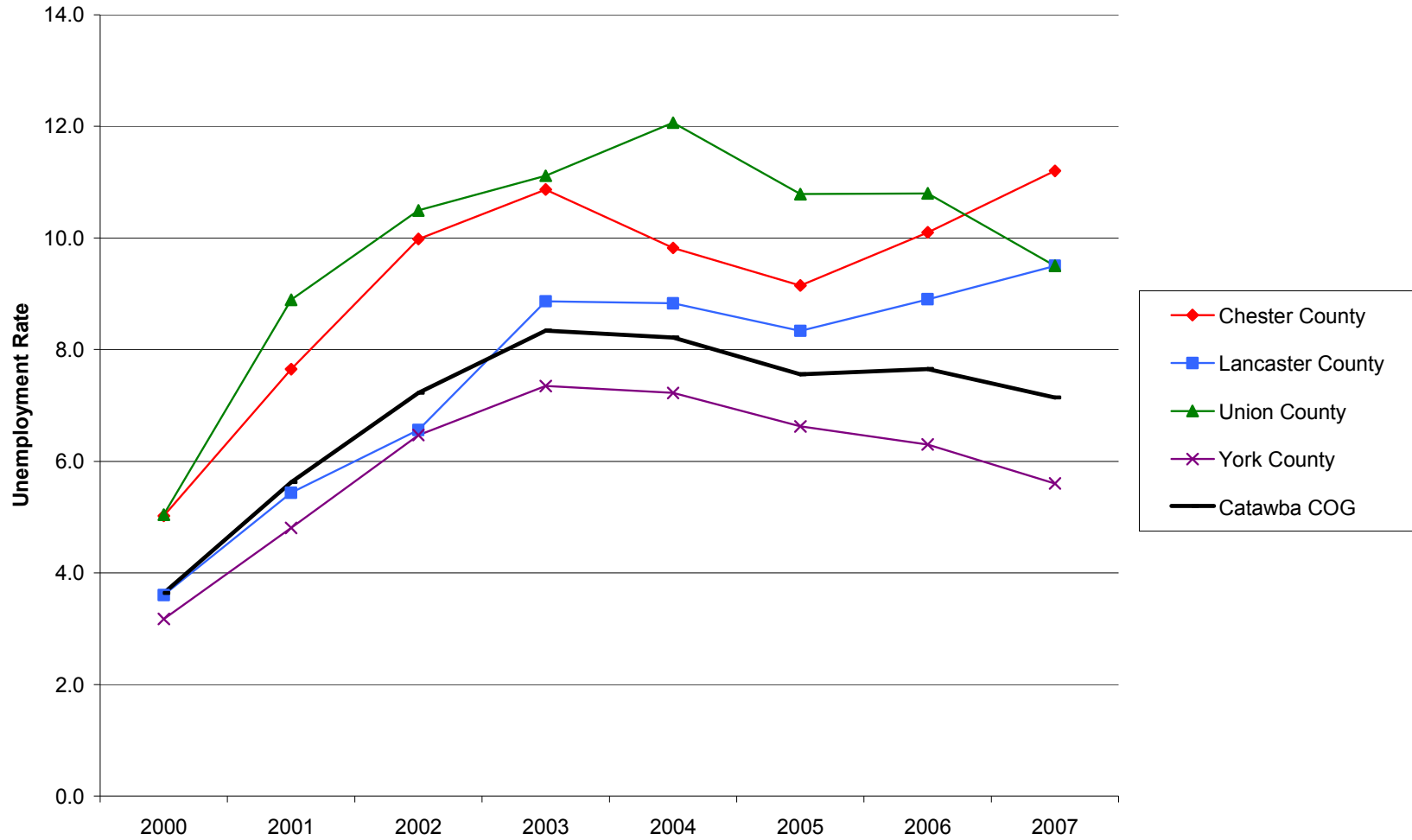
Manufacturing Employment Trends in the Catawba COG Region and Component Counties, 2000-2007

Source: Quarterly Census of Employment and Wages (2000-2007). U.S. Department of Labor, Bureau of Labor Statistics



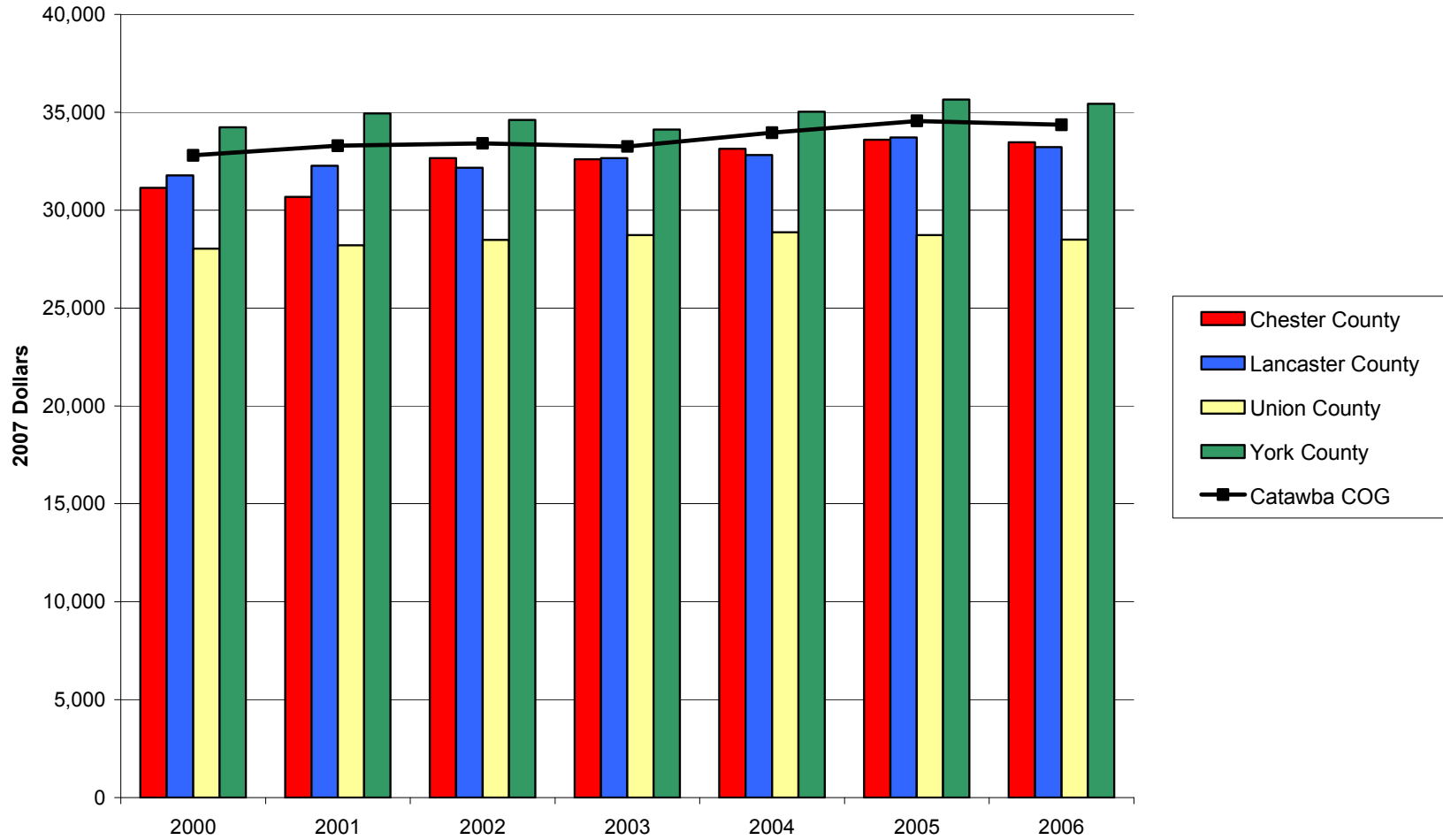
Unemployment Rates in the Catawba COG Region and Component Counties, 2000-2007

Source: Local Area Unemployment Statistics. U.S. Department of Labor, Bureau of Labor Statistics



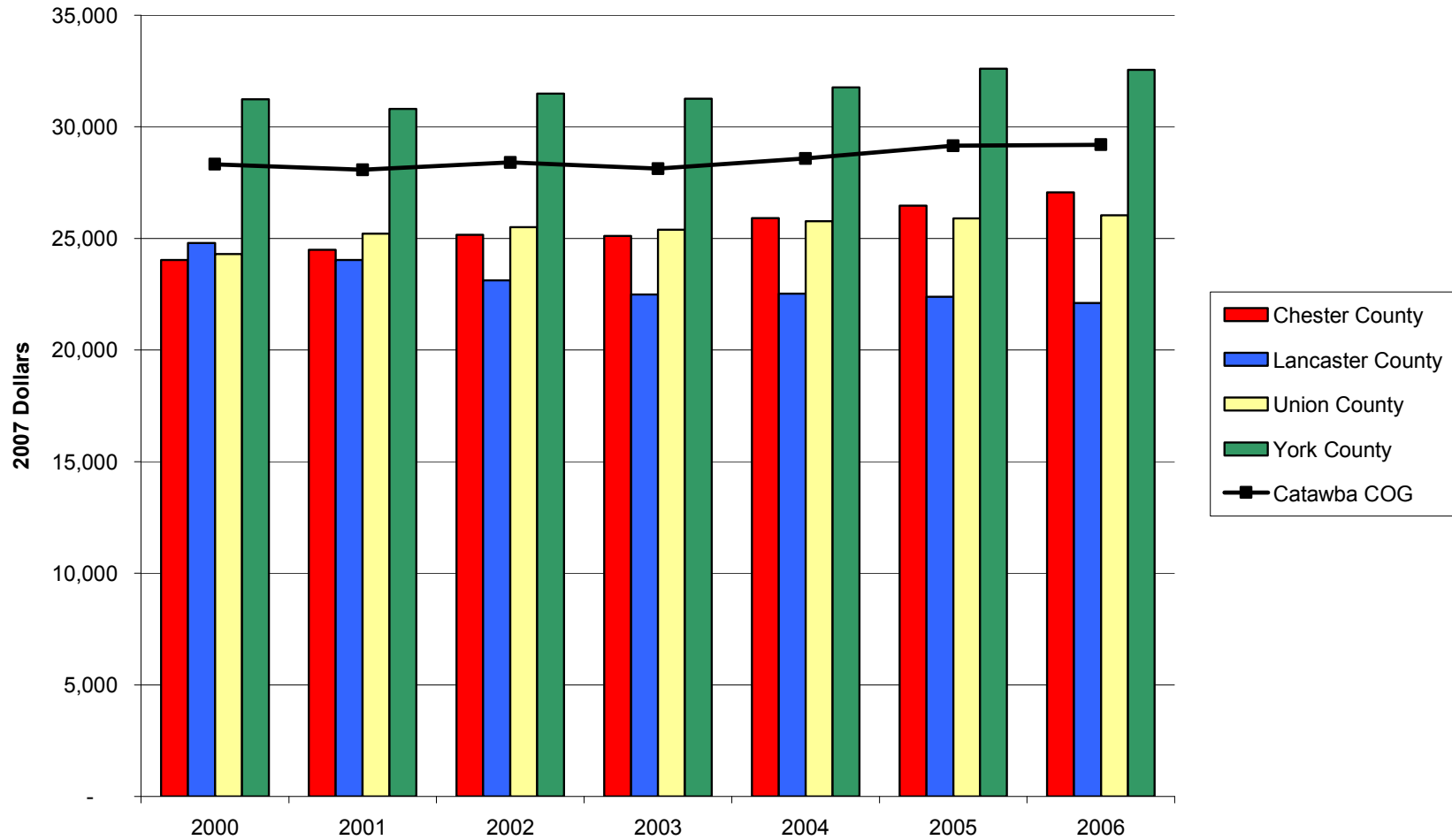
Earnings per Worker in the Catawba COG Region and Component Counties, 2000-2006

Source: Bureau of Economic Analysis, Regional Economic Information System (REIS): Table CA30



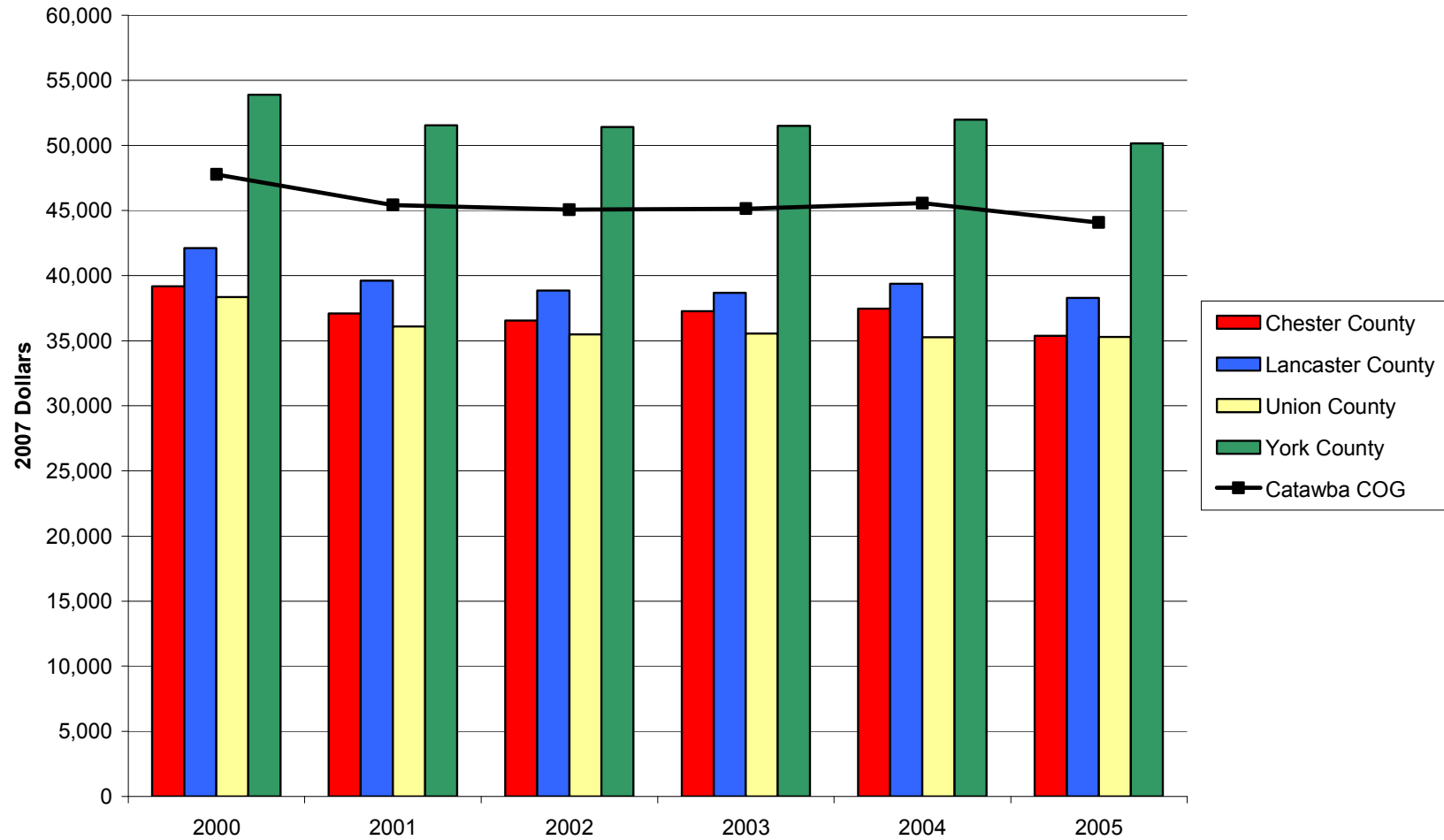
Per Capita Income in the Catawba COG Region and Component Counties, 2000-2006

Source: Bureau of Economic Analysis, Regional Economic Information System (REIS): Table CA31-3



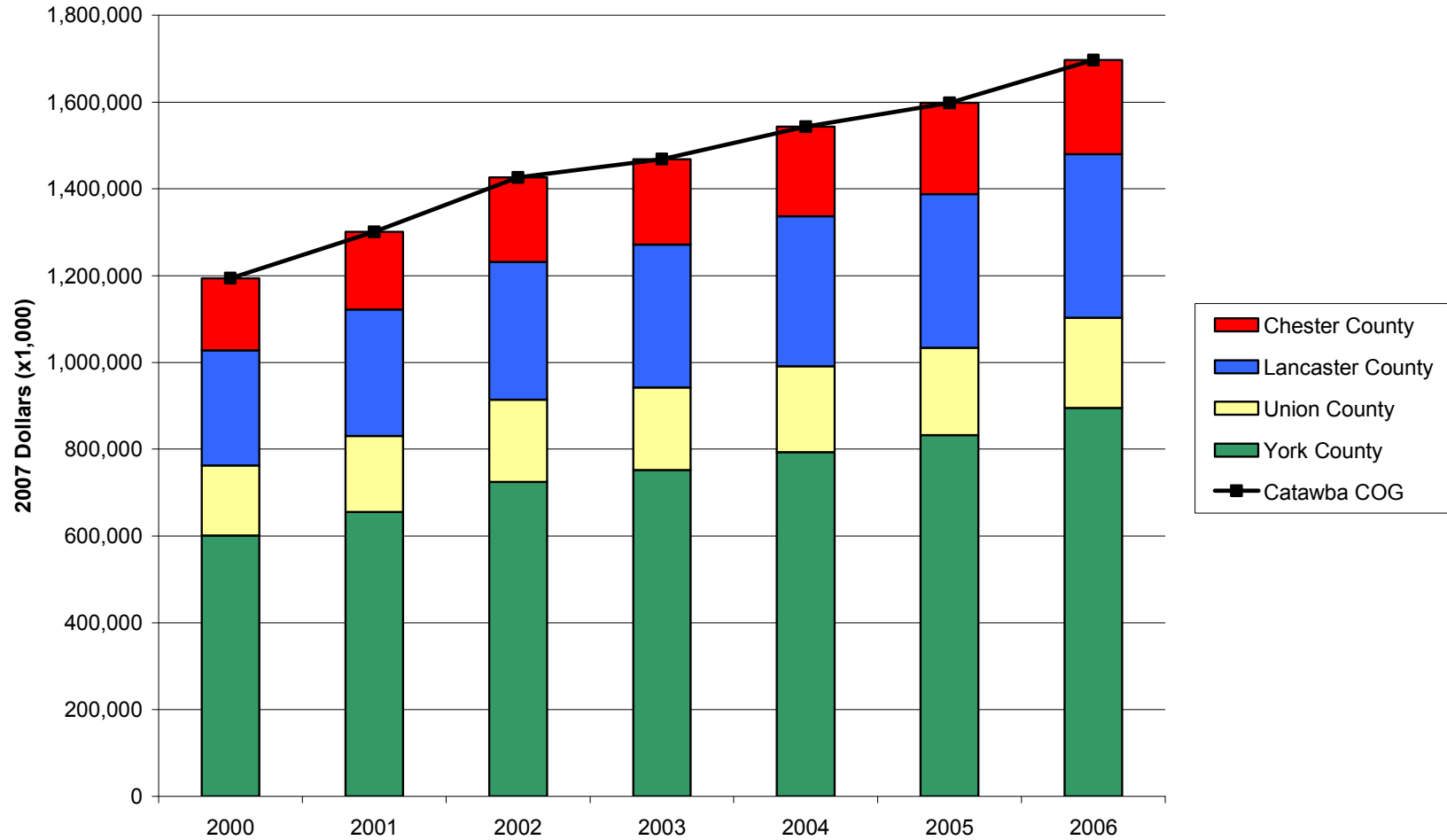
Median Household Income in the Catawba COG Region and Component Counties, 2000-2005

Source: U.S. Census Bureau, Small Area Income and Poverty Estimates



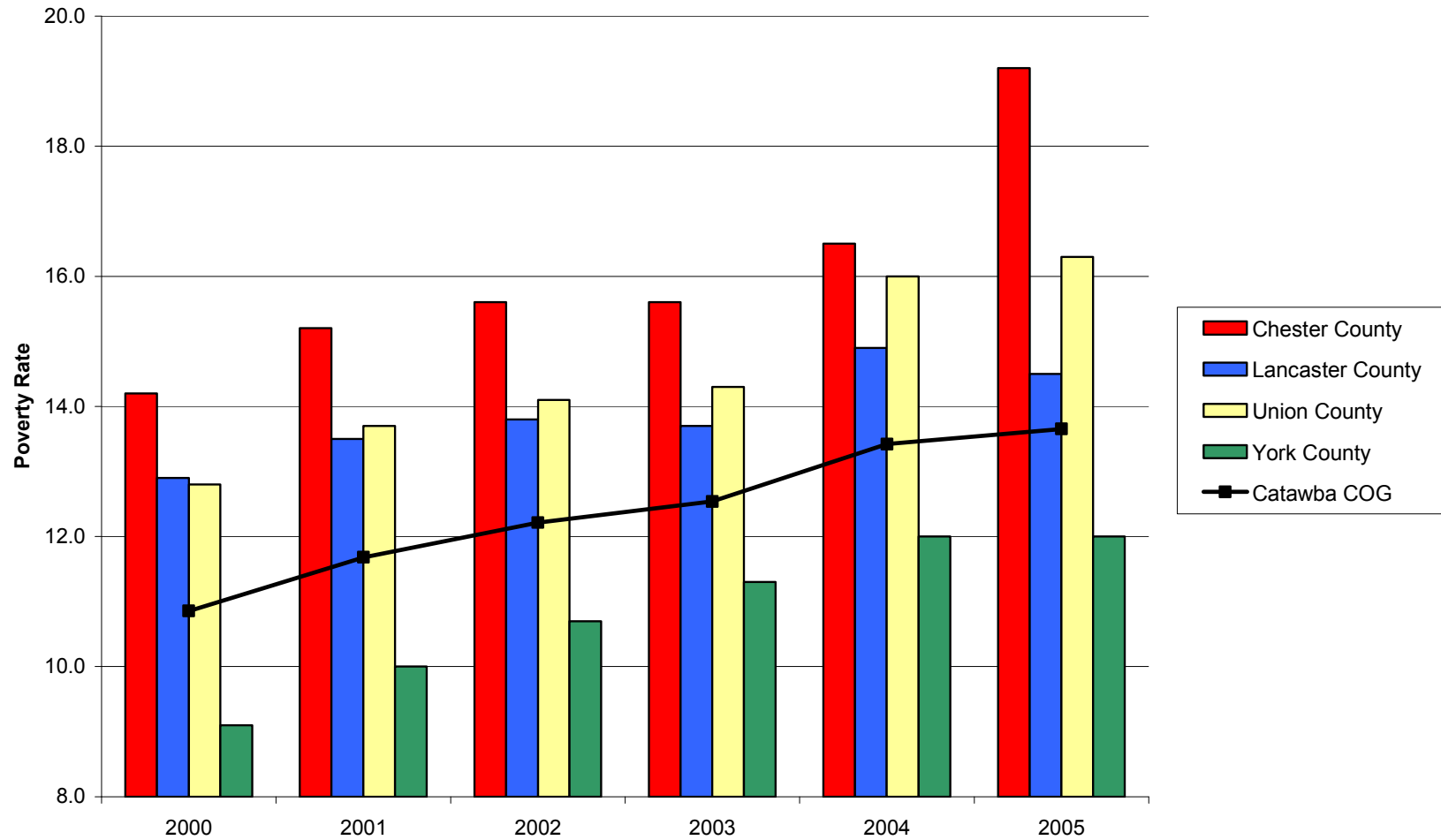
Transfer Payments in the Catawba COG Region and Component Counties, 2000-2006

Source: Bureau of Economic Analysis, Regional Economic Information System (REIS): Table CA35



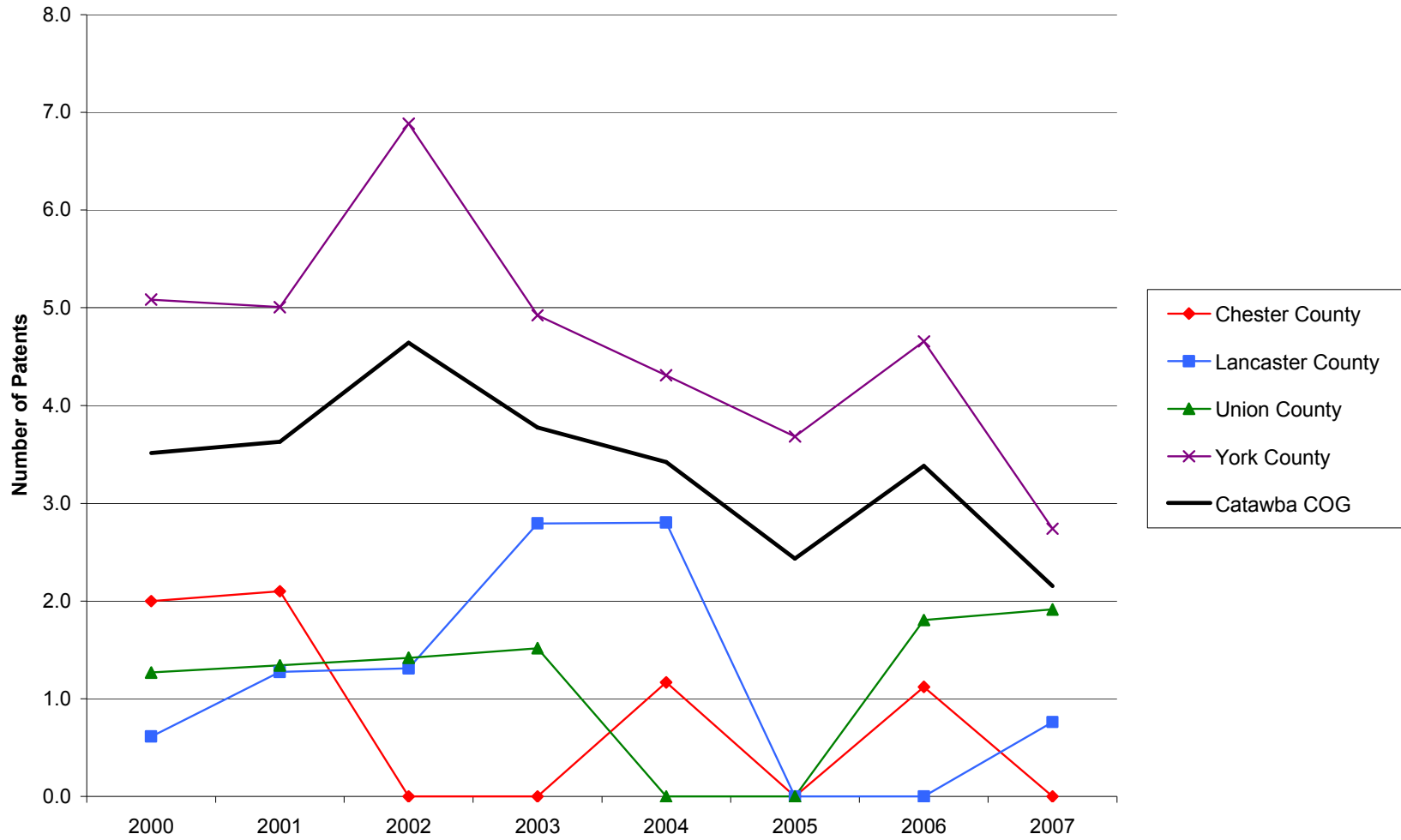
Poverty Rates in the Catawba COG Region and Component Counties, 2000-2005

Source: U.S. Census Bureau, Small Area Income and Poverty Estimates



Patents per 10,000 Employees in the Catawba COG Region and Component Counties, 2000-2007

Source: United States Patent and Trademark Office, Patent Electronic Business Center



SBIR/STTR Phase I and II Awards per 1,000 Employees in the Catawba COG Region and Component Counties, 2000-2006

Source: U.S. Small Business Administration, Technology Resources Network

