

A. Economic Indicators: Establishments and Employment, Central Midlands COG

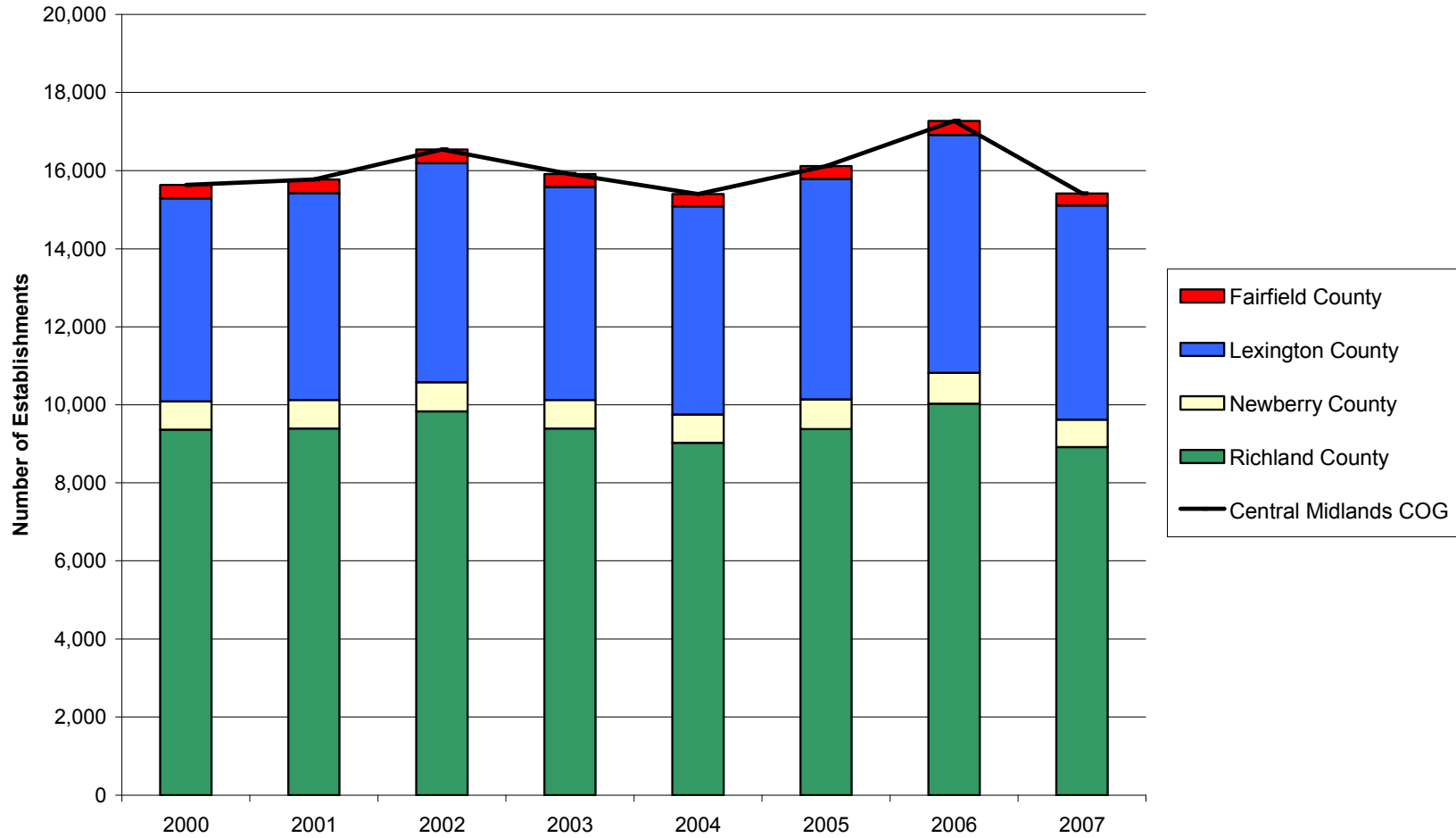
Indicator	Geographic Area	Year					Percent Change	
Private Establishments		2000	2004	2005	2006	2007	2000-2007	2006-2007
	Fairfield County	344	318	332	356	315	-8.4%	-11.5%
	Lexington County	5,201	5,333	5,653	6,093	5,478	5.3%	-10.1%
	Newberry County	723	719	753	791	711	-1.7%	-10.1%
	Richland County	9,365	9,031	9,379	10,029	8,914	-4.8%	-11.1%
	Central Midlands COG	15,633	15,401	16,117	17,269	15,418	-1.4%	-10.7%
	South Carolina	110,221	108,929	115,194	125,222	113,254	2.8%	-9.6%
	United States	7,646,318	8,093,142	8,294,662	8,505,496	8,680,218	13.5%	2.1%
Employment		2000	2004	2005	2006	2007	2000-2007	2006-2007
	Fairfield County	5,977	4,220	4,310	4,409	4,325	-27.6%	-1.9%
	Lexington County	68,242	71,540	73,413	76,160	78,522	15.1%	3.1%
	Newberry County	11,172	10,970	10,975	11,231	11,571	3.6%	3.0%
	Richland County	148,865	153,785	152,159	158,268	164,202	10.3%	3.7%
	Central Midlands COG	234,256	240,515	240,857	250,068	258,620	10.4%	3.4%
	South Carolina	1,507,621	1,476,668	1,500,676	1,534,903	1,563,381	3.7%	1.9%
	United States	110,023,983	108,490,066	110,611,016	112,718,858	114,014,680	3.6%	1.1%
Manufacturing Employment		2000	2004	2005	2006	2007	2000-2007	2006-2007
	Fairfield County	2,418	735	819	758	665	-72.5%	-12.3%
	Lexington County	13,734	11,876	11,909	11,701	11,987	-12.7%	2.4%
	Newberry County	4,712	4,381	4,268	4,482	4,845	2.8%	8.1%
	Richland County	12,458	11,189	11,333	11,375	11,350	-8.9%	-0.2%
	Central Midlands COG	33,322	28,181	28,329	28,316	28,847	-13.4%	1.9%
	South Carolina	335,118	267,426	262,714	253,811	249,647	-25.5%	-1.6%
	United States	17,314,423	14,257,380	14,190,394	14,110,663	13,834,745	-20.1%	-2.0%

Unemployment	2000	2004	2005	2006	2007	2000-2007	2006-2007
Fairfield County	539	900	886	1,017	998	85.2%	-1.9%
Lexington County	3,137	6,088	6,247	6,048	5,659	80.4%	-6.4%
Newberry County	717	1,282	1,234	1,146	1,064	48.4%	-7.2%
Richland County	5,196	10,088	10,194	10,140	9,792	88.5%	-3.4%
Central Midlands COG	9,589	18,358	18,561	18,733	17,513	82.6%	-6.5%
South Carolina	70,821	138,938	139,693	134,523	125,262	76.9%	-6.9%
United States	5,692,000	8,149,000	7,591,000	7,001,000	7,078,000	24.3%	1.1%

Unemployment Rate	2000	2004	2005	2006	2007	Rate Change	
						2000-2007	2006-2007
Fairfield County	4.9	7.9	7.8	8.9	8.6	3.7	-0.3
Lexington County	2.6	4.9	4.9	4.6	4.3	1.7	-0.3
Newberry County	4.1	7.3	6.9	6.4	5.9	1.8	-0.5
Richland County	3.2	6.0	5.9	5.7	5.5	2.3	-0.2
Central Midlands COG	3.1	5.7	5.6	5.5	5.1	2.0	-0.4
South Carolina	3.6	6.8	6.7	6.4	5.9	2.3	-0.5
United States	4.0	5.5	5.1	4.6	4.6	0.6	0.0

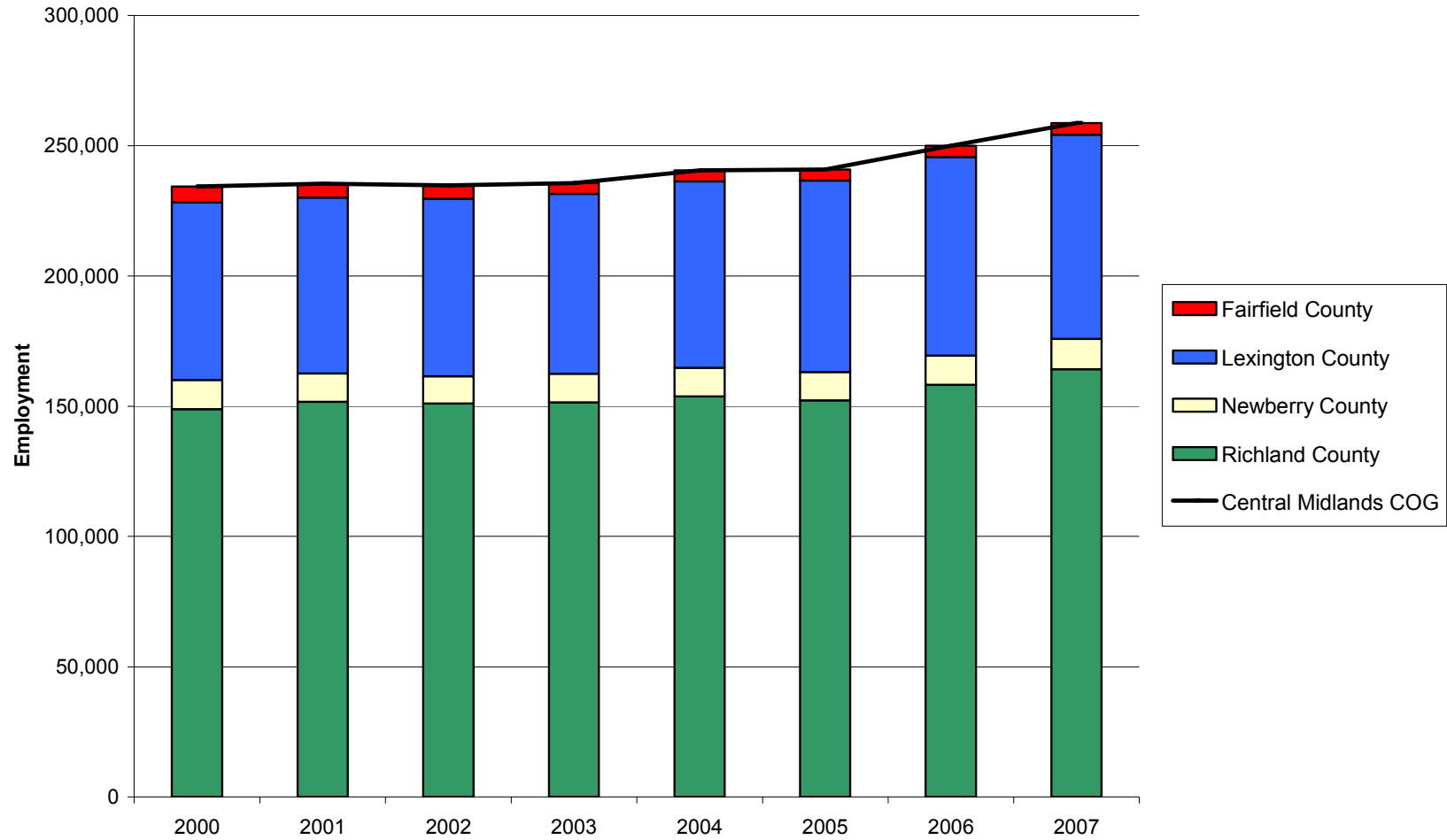
Private Establishments in the Central Midlands COG Region and Component Counties, 2000-2007

Source: Quarterly Census of Employment and Wages (2000-2007). U.S. Department of Labor, Bureau of Labor Statistics



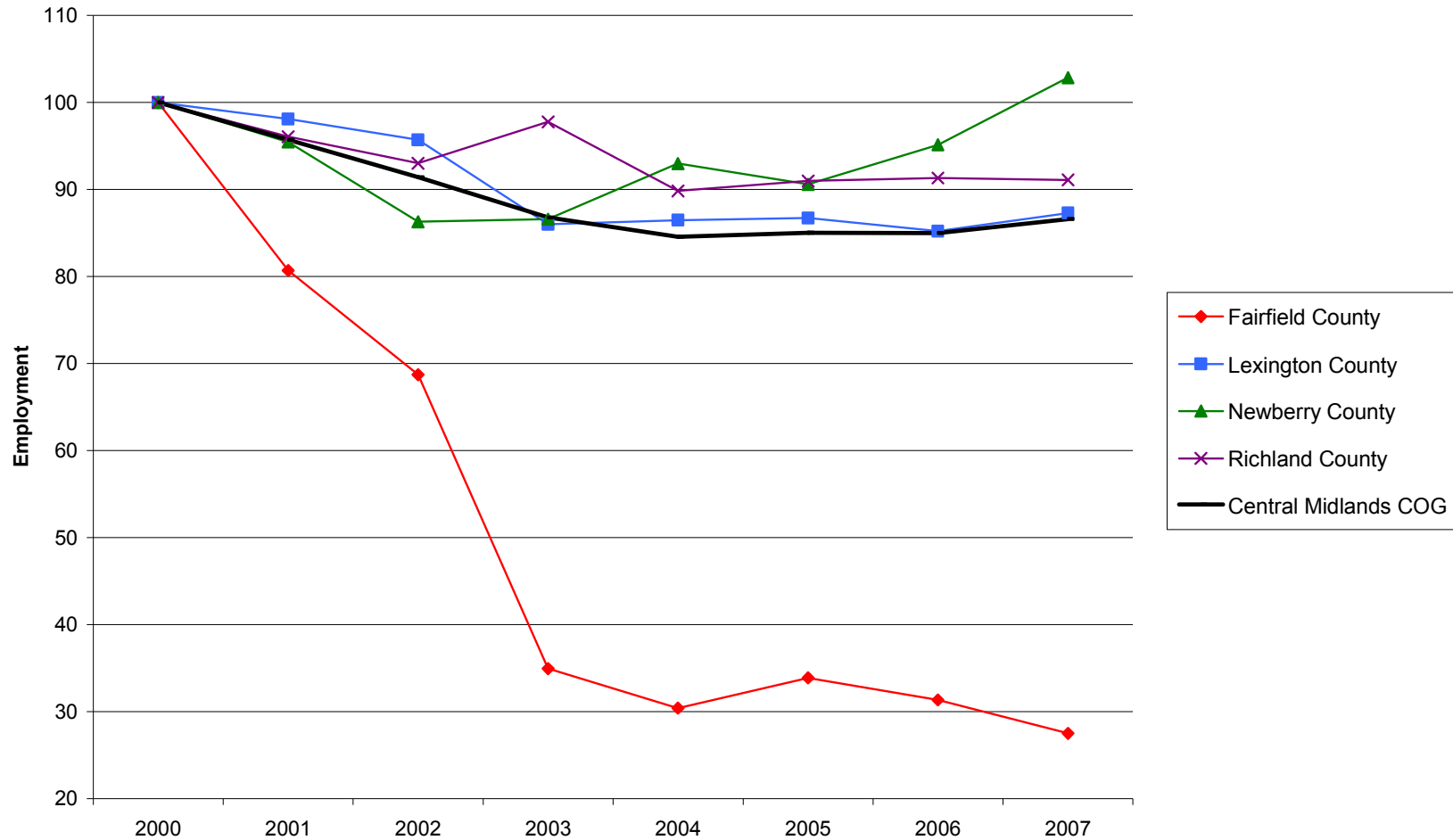
Private Employment in the Central Midlands COG Region and Component Counties, 2000-2007

Source: Quarterly Census of Employment and Wages (2000-2007). U.S. Department of Labor, Bureau of Labor Statistics



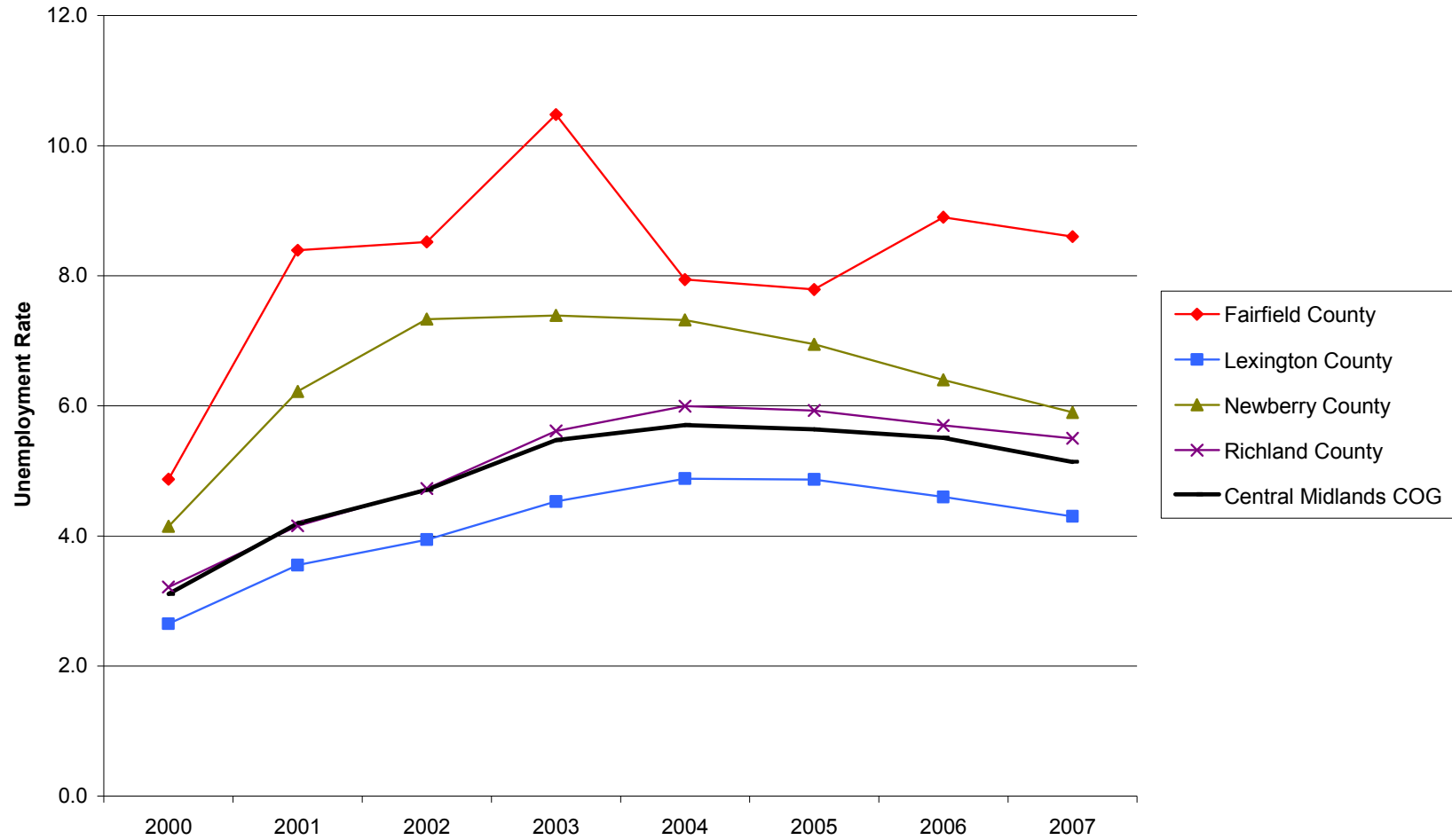
Manufacturing Employment Trends in the Central Midlands COG Region and Component Counties, 2000-2007

Source: Quarterly Census of Employment and Wages (2000-2007). U.S. Department of Labor, Bureau of Labor Statistics



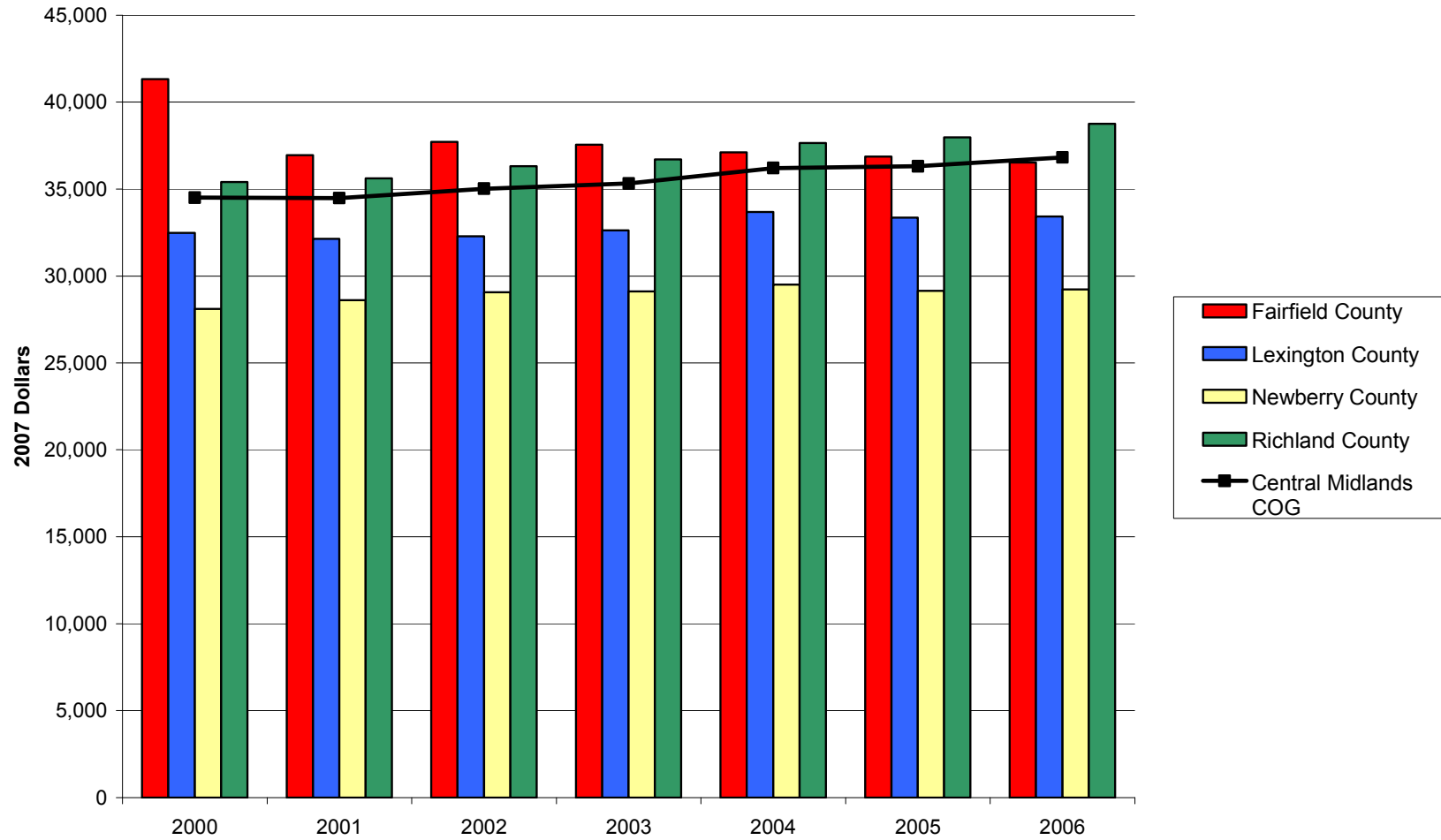
Unemployment Rates in the Central Midlands COG Region and Component Counties, 2000-2007

Source: Local Area Unemployment Statistics. U.S. Department of Labor. Bureau of Labor Statistics



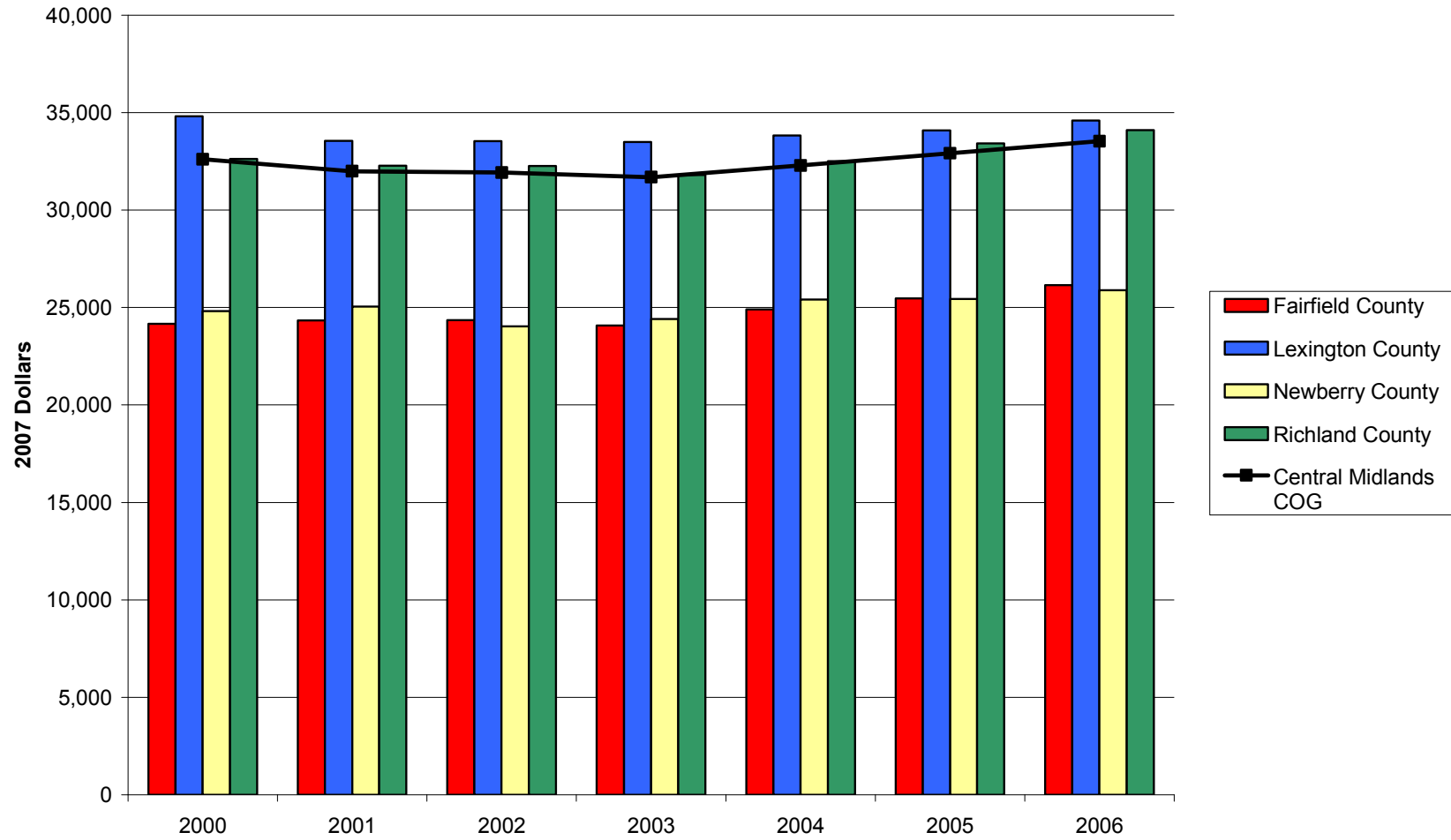
Earnings per Worker in the Central Midlands COG Region and Component Counties, 2000-2006

Source: Bureau of Economic Analysis, Regional Economic Information System (REIS): Table CA30



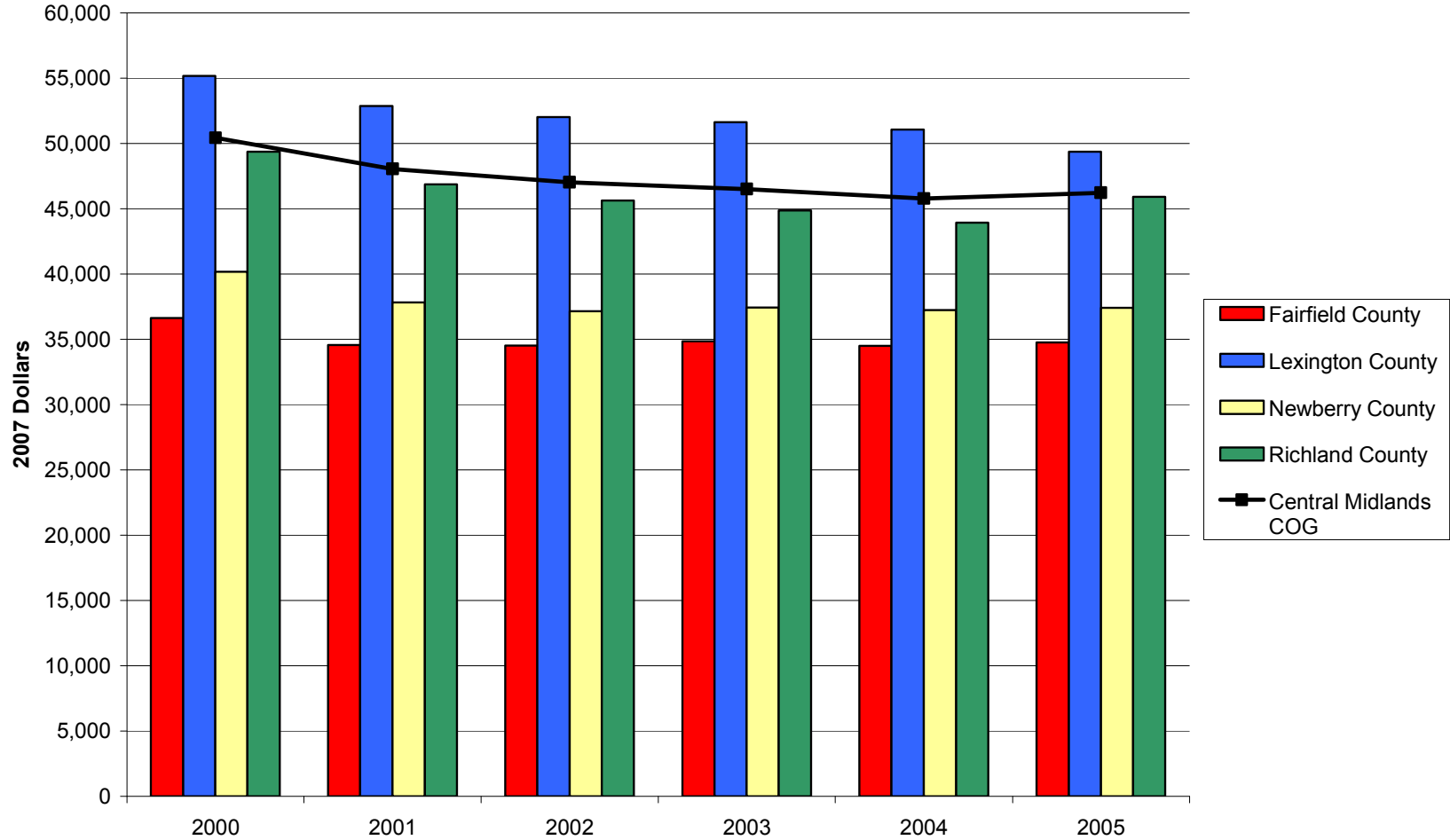
Per Capita Income in the Central Midlands COG Region and Component Counties, 2000-2006

Source: Bureau of Economic Analysis, Regional Economic Information System (REIS): Table CA31-3



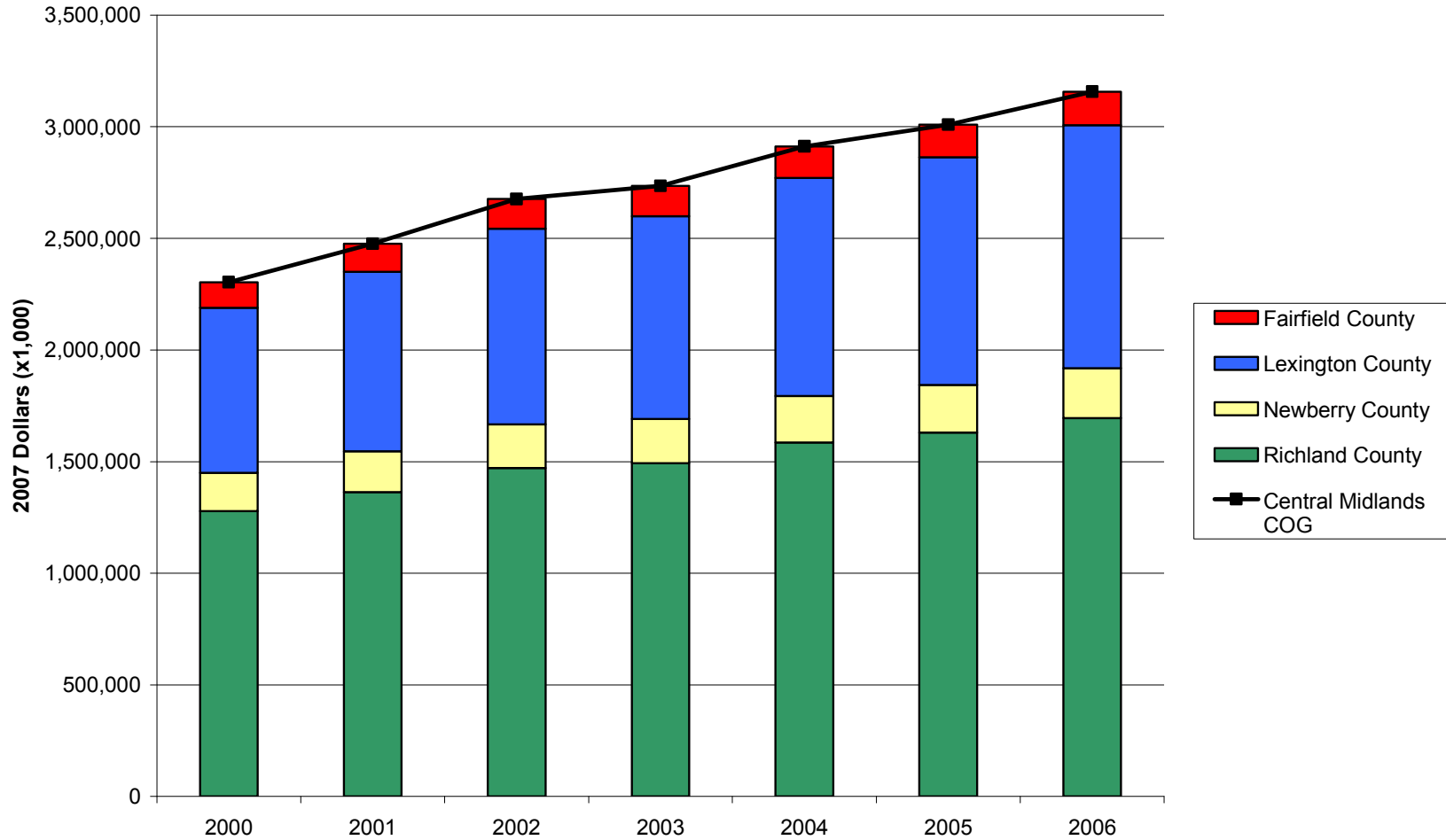
Median Household Income in the Central Midlands COG Region and Component Counties, 2000-2005

Source: U.S. Census Bureau, Small Area Income and Poverty Estimates



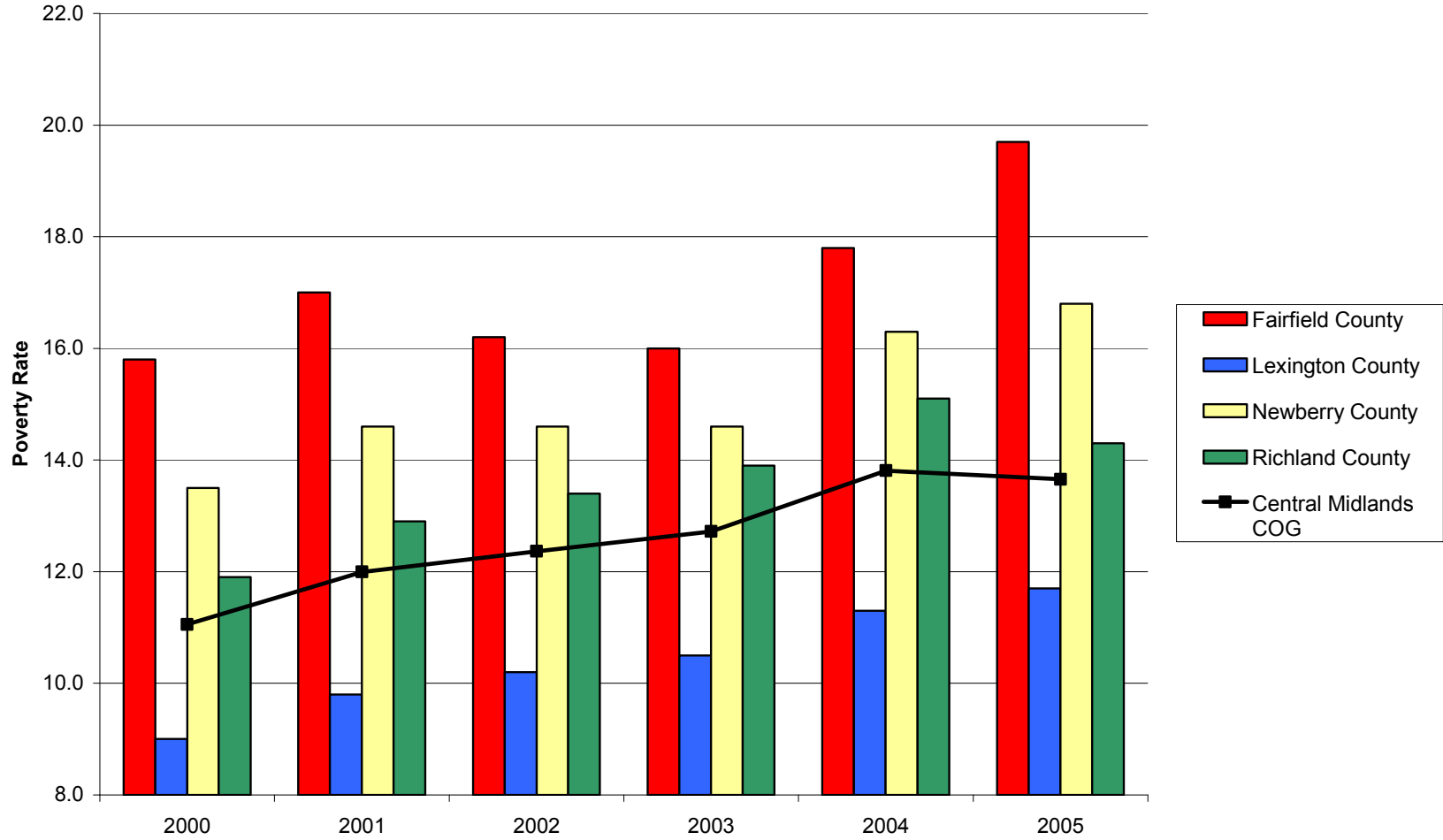
Transfer Payments in the Central Midlands COG Region and Component Counties, 2000-2006

Source: Bureau of Economic Analysis, Regional Economic Information System (REIS): Table CA35



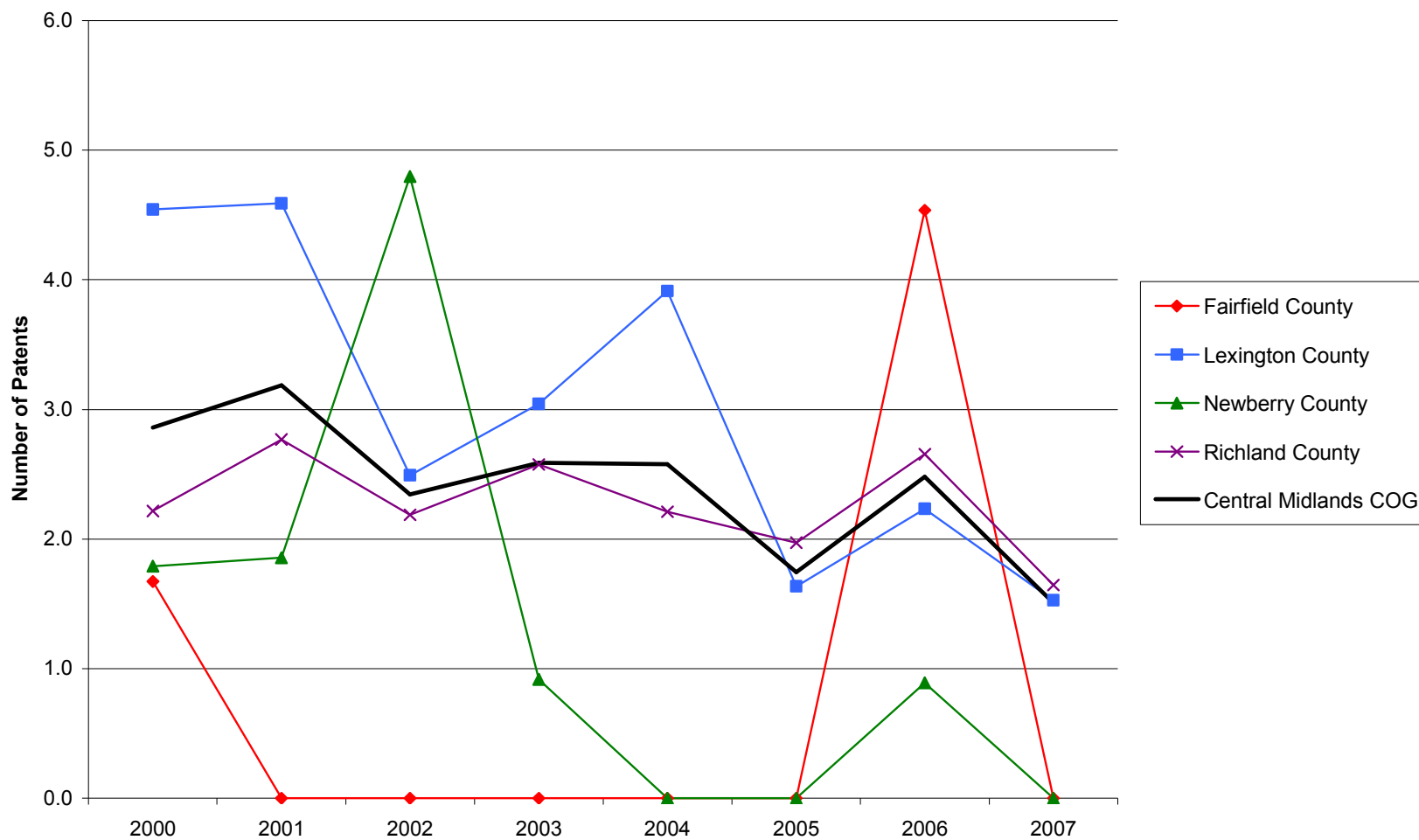
Poverty Rates in the Central Midlands COG Region and Component Counties, 2000-2005

Source: U.S. Census Bureau, Small Area Income and Poverty Estimates



Patents per 10,000 Employees in the Central Midlands COG Region and Component Counties, 2000-2007

Source: United States Patent and Trademark Office, Patent Electronic Business Center



SBIR/STTR Phase I and II Awards per 1,000 Employees in the Central Midlands COG Region and Component Counties, 2000-2006

Source: U.S. Small Business Administration, Technology Resources Network

