

**A. Economic Indicators: Establishments and Employment, Lowcountry COG**

Indicator	Geographic Area	Year					Percent Change	
		2000	2004	2005	2006	2007	2000-2007	2006-2007
<b>Private Establishments</b>		<b>2000</b>	<b>2004</b>	<b>2005</b>	<b>2006</b>	<b>2007</b>	<b>2000-2007</b>	<b>2006-2007</b>
	Beaufort County	4,493	4,834	5,078	5,515	5,045	12.3%	-8.5%
	Colleton County	883	850	884	937	797	-9.7%	-14.9%
	Hampton County	486	445	468	490	398	-18.1%	-18.8%
	Jasper County	444	522	556	619	558	25.7%	-9.9%
	<b>Lowcountry COG</b>	6,306	6,651	6,986	7,561	6,798	7.8%	-10.1%
	<b>South Carolina</b>	110,221	108,929	115,194	125,222	113,254	2.8%	-9.6%
	<b>United States</b>	7,646,318	8,093,142	8,294,662	8,505,496	8,680,218	13.5%	2.1%
<b>Employment</b>		<b>2000</b>	<b>2004</b>	<b>2005</b>	<b>2006</b>	<b>2007</b>	<b>2000-2007</b>	<b>2006-2007</b>
	Beaufort County	45,235	50,108	51,860	52,950	53,913	19.2%	1.8%
	Colleton County	8,427	8,354	8,238	8,692	8,419	-0.1%	-3.1%
	Hampton County	4,705	3,786	3,751	3,752	3,782	-19.6%	0.8%
	Jasper County	3,426	4,302	4,768	6,187	6,514	90.1%	5.3%
	<b>Lowcountry COG</b>	61,793	66,550	68,617	71,581	72,628	17.5%	1.5%
	<b>South Carolina</b>	1,507,621	1,476,668	1,500,676	1,534,903	1,563,381	3.7%	1.9%
	<b>United States</b>	110,023,983	108,490,066	110,611,016	112,718,858	114,014,680	3.6%	1.1%
<b>Manufacturing Employment</b>		<b>2000</b>	<b>2004</b>	<b>2005</b>	<b>2006</b>	<b>2007</b>	<b>2000-2007</b>	<b>2006-2007</b>
	Beaufort County	1,035	1,011	976	1,011	975	-5.8%	-3.6%
	Colleton County	1,847	1,632	1,636	1,769	1,368	-25.9%	-22.7%
	Hampton County	1,127	815	890	879	808	-28.3%	-8.1%
	Jasper County	452	486	503	666	593	31.2%	-11.0%
	<b>Lowcountry</b>	4,461	3,944	4,005	4,325	3,744	-16.1%	-13.4%

**COG**

<b>South Carolina</b>	335,118	267,426	262,714	253,811	249,647	-25.5%	-1.6%
<b>United States</b>	17,314,423	14,257,380	14,190,394	14,110,663	13,834,745	-20.1%	-2.0%

**Unemployment**

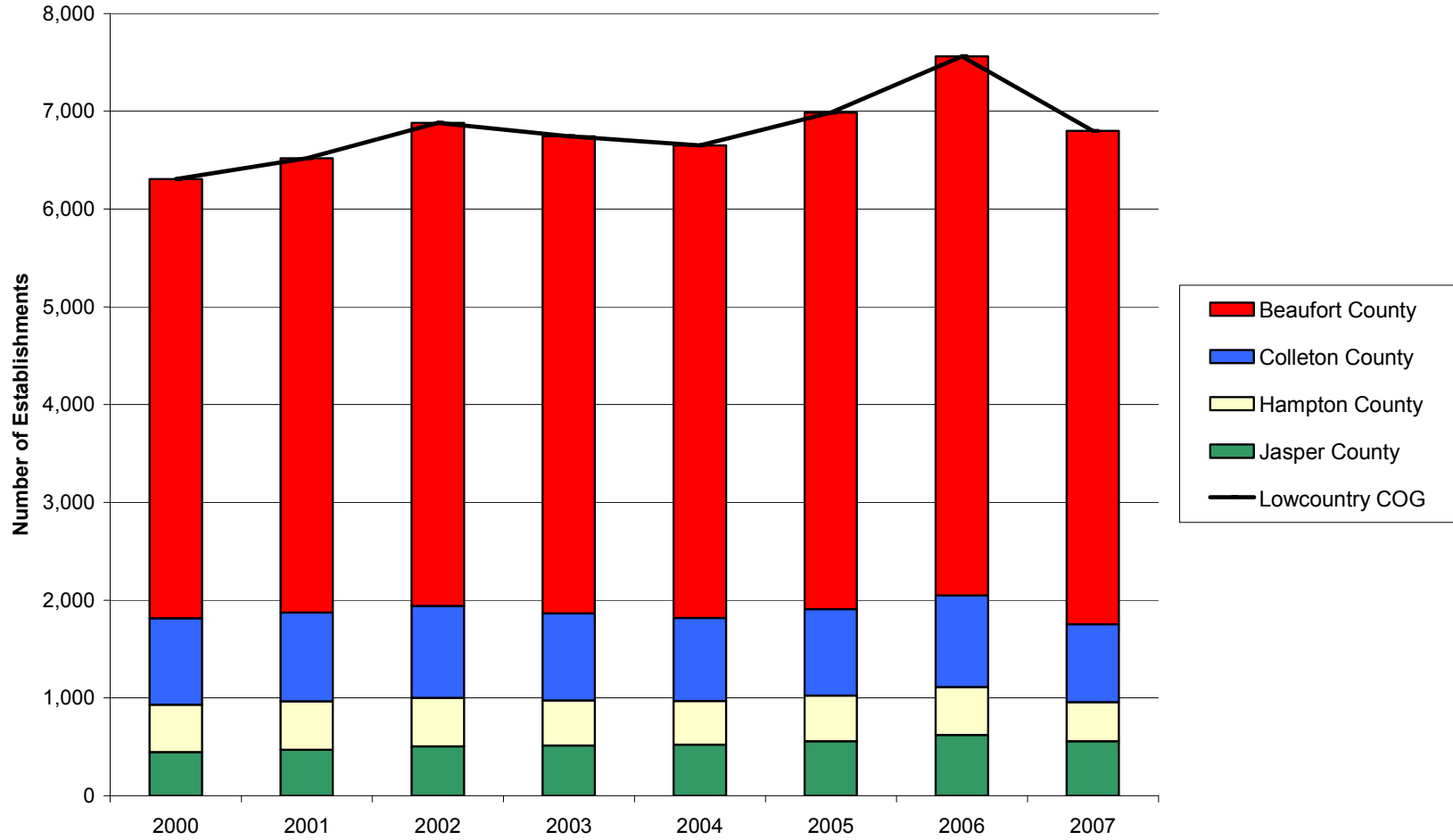
	<b>2000</b>	<b>2004</b>	<b>2005</b>	<b>2006</b>	<b>2007</b>	<b>2000-2007</b>	<b>2006-2007</b>
Beaufort County	1,576	2,926	3,003	2,982	2,885	83.1%	-3.3%
Colleton County	596	1,184	1,176	1,087	1,066	78.9%	-1.9%
Hampton County	352	722	647	566	556	58.0%	-1.8%
Jasper County	324	544	522	490	484	49.4%	-1.2%
<b>Lowcountry COG</b>	2,848	5,376	5,348	5,257	4,991	75.2%	-5.1%
<b>South Carolina</b>	70,821	138,938	139,693	134,523	125,262	76.9%	-6.9%
<b>United States</b>	5,692,000	8,149,000	7,591,000	7,001,000	7,078,000	24.3%	1.1%

**Rate Change**

<b>Unemployment Rate</b>	<b>2000</b>	<b>2004</b>	<b>2005</b>	<b>2006</b>	<b>2007</b>	<b>2000-2007</b>	<b>2006-2007</b>
Beaufort County	3.1	4.9	4.9	4.7	4.4	1.3	-0.3
Colleton County	3.7	7.2	7.1	6.4	6.4	2.7	0.0
Hampton County	4.2	9.3	8.3	7.0	7.0	2.8	0.0
Jasper County	3.5	5.5	5.1	4.8	4.6	1.1	-0.2
<b>Lowcountry COG</b>	3.4	5.8	5.6	5.5	5.0	1.6	-0.5
<b>South Carolina</b>	3.6	6.8	6.7	6.4	5.9	2.3	-0.5
<b>United States</b>	4.0	5.5	5.1	4.6	4.6	0.6	0.0

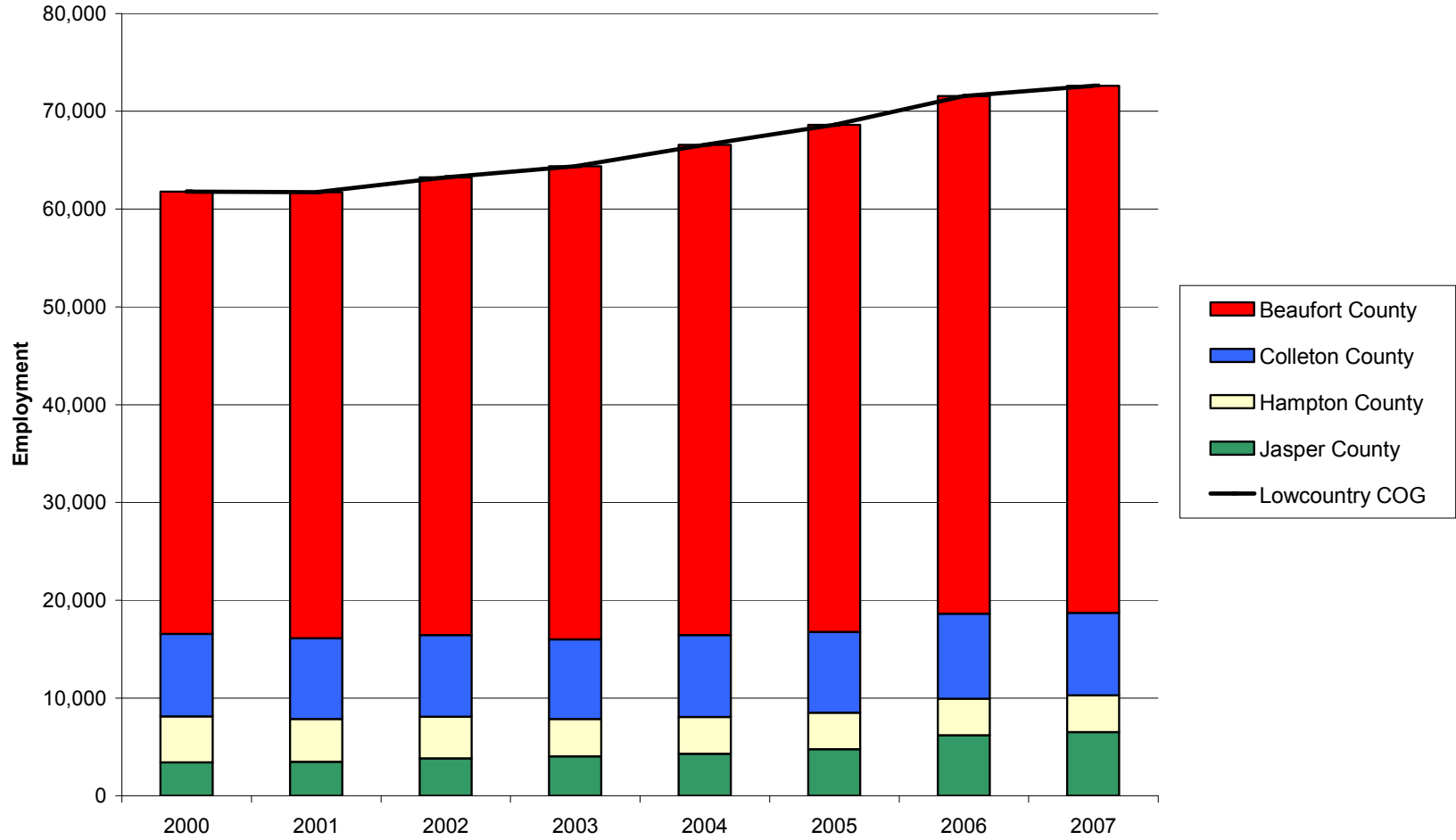
## Private Establishments in the Lowcountry COG Region and Component Counties, 2000-2007

Source: Quarterly Census of Employment and Wages (2000-2007). U.S. Department of Labor, Bureau of Labor Statistics



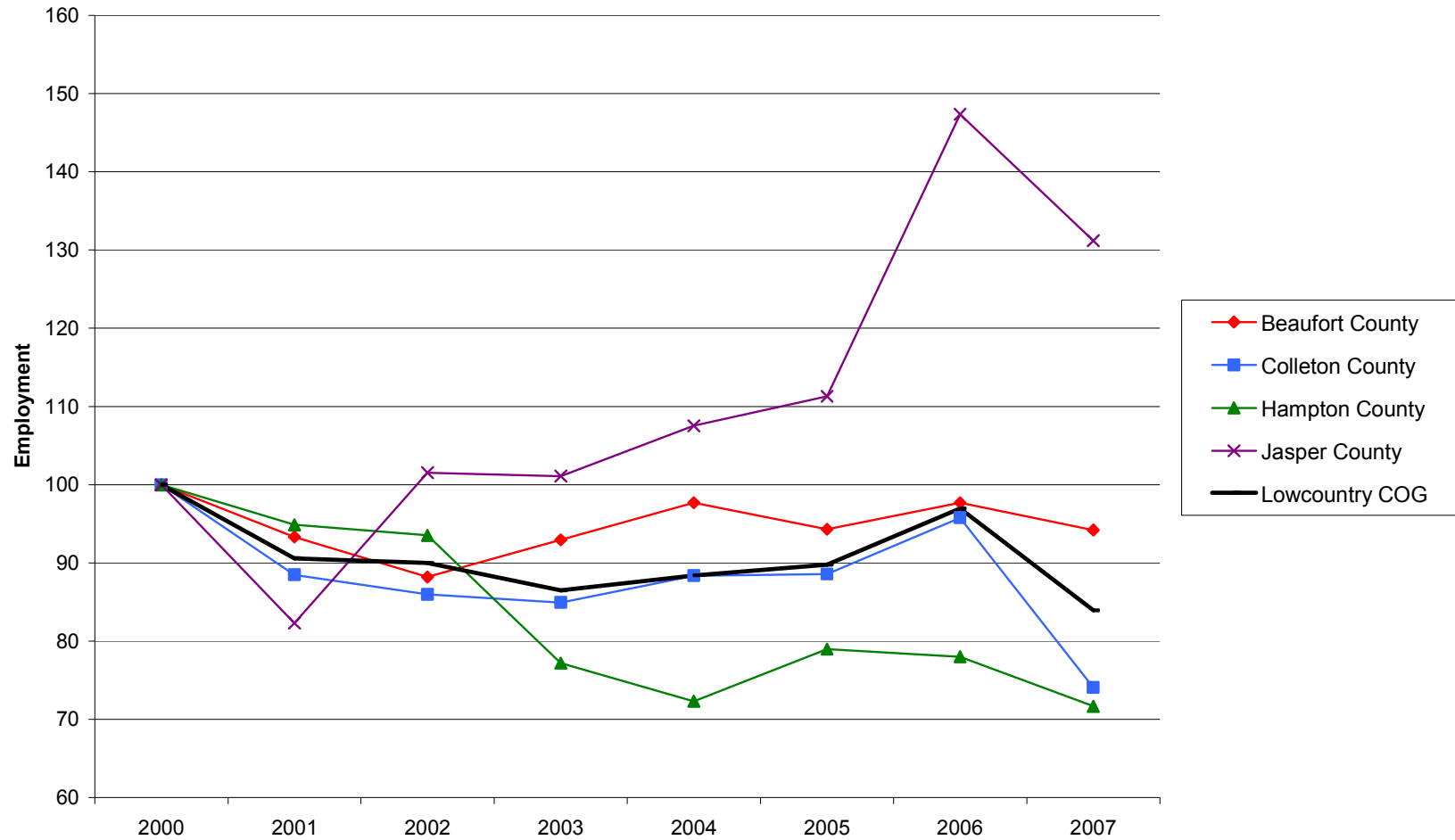
### Private Employment in the Lowcountry COG Region and Component Counties, 2000-2007

Source: Quarterly Census of Employment and Wages (2000-2007). U.S. Department of Labor, Bureau of Labor Statistics



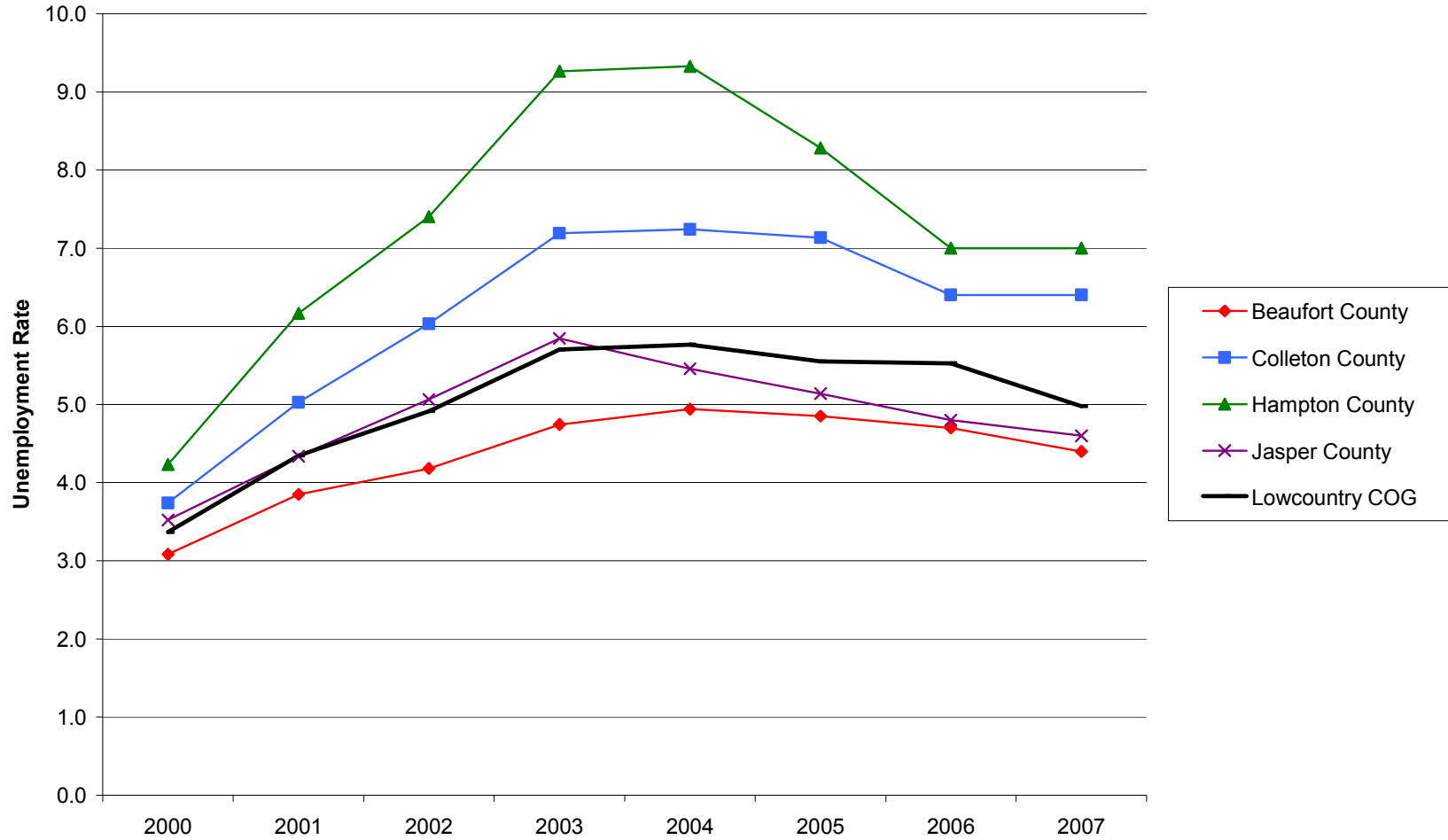
## Manufacturing Employment Trends in the Lowcountry COG Region and Component Counties, 2000-2007

Source: Quarterly Census of Employment and Wages (2000-2007). U.S. Department of Labor, Bureau of Labor Statistics



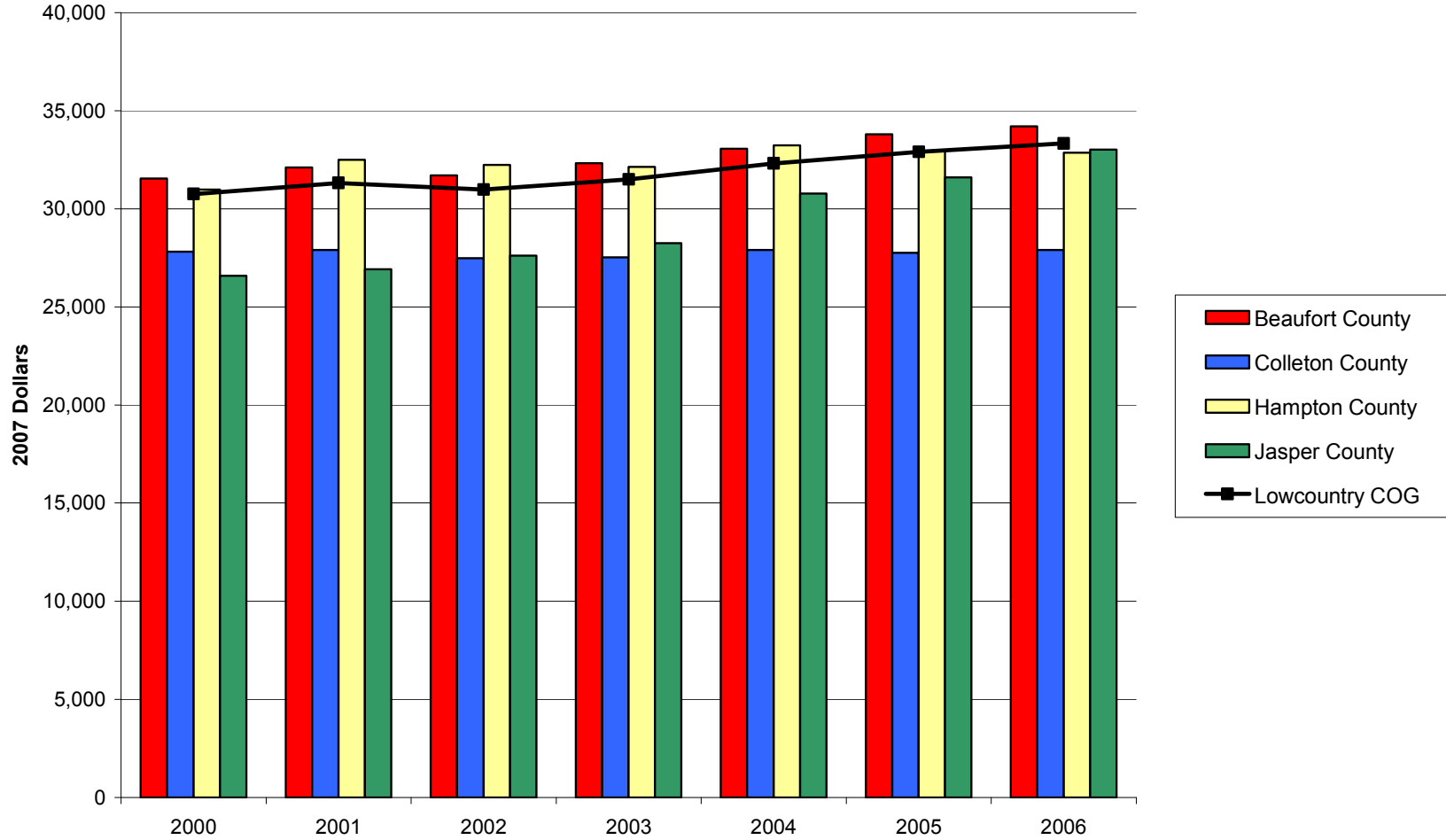
## Unemployment Rates in the Lowcountry COG Region and Component Counties, 2000-2007

Source: Local Area Unemployment Statistics. U.S. Department of Labor, Bureau of Labor Statistics



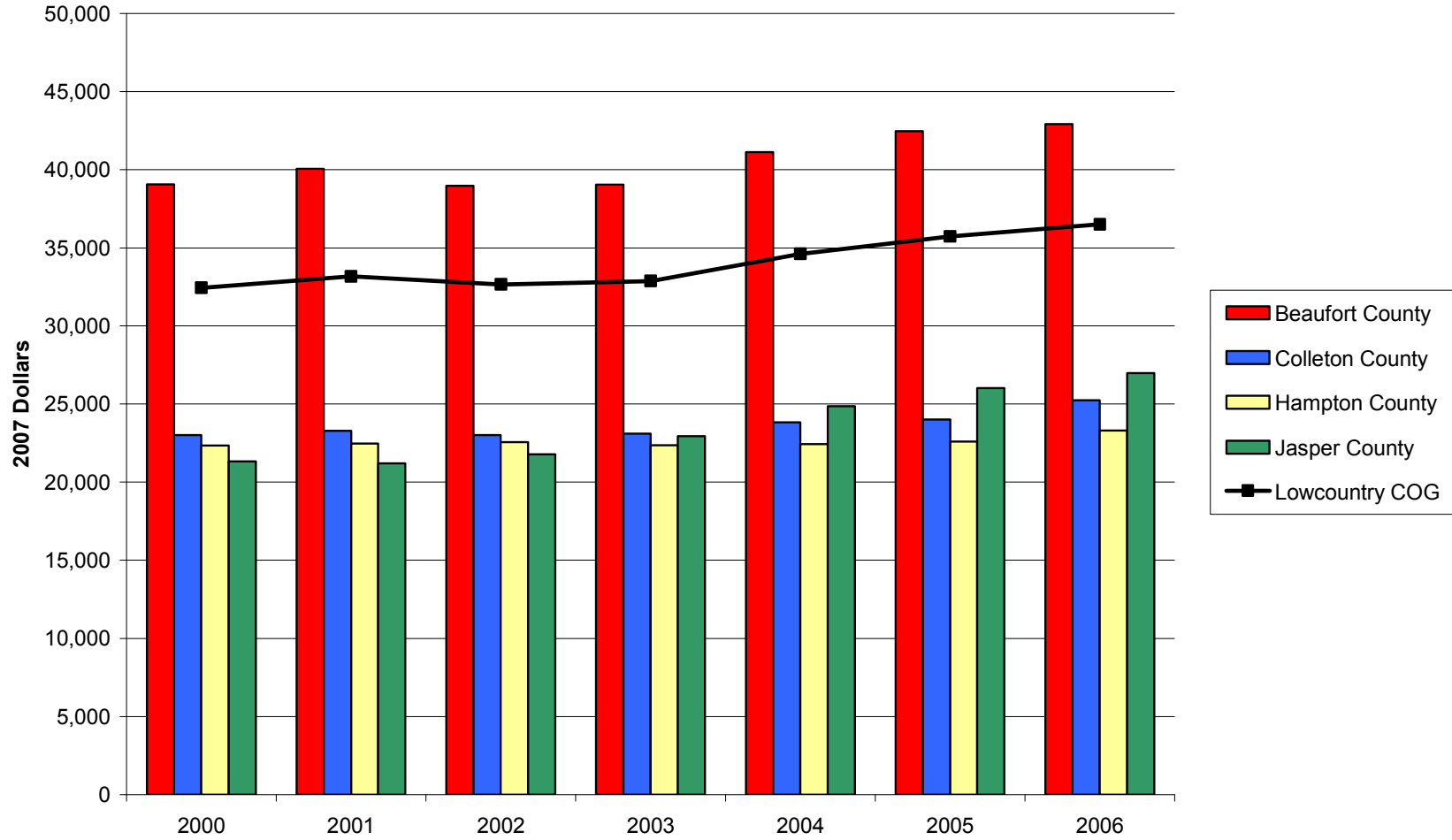
## Earnings per Worker in the Lowcountry COG Region and Component Counties, 2000-2006

Source: Bureau of Economic Analysis, Regional Economic Information System (REIS): Table CA30



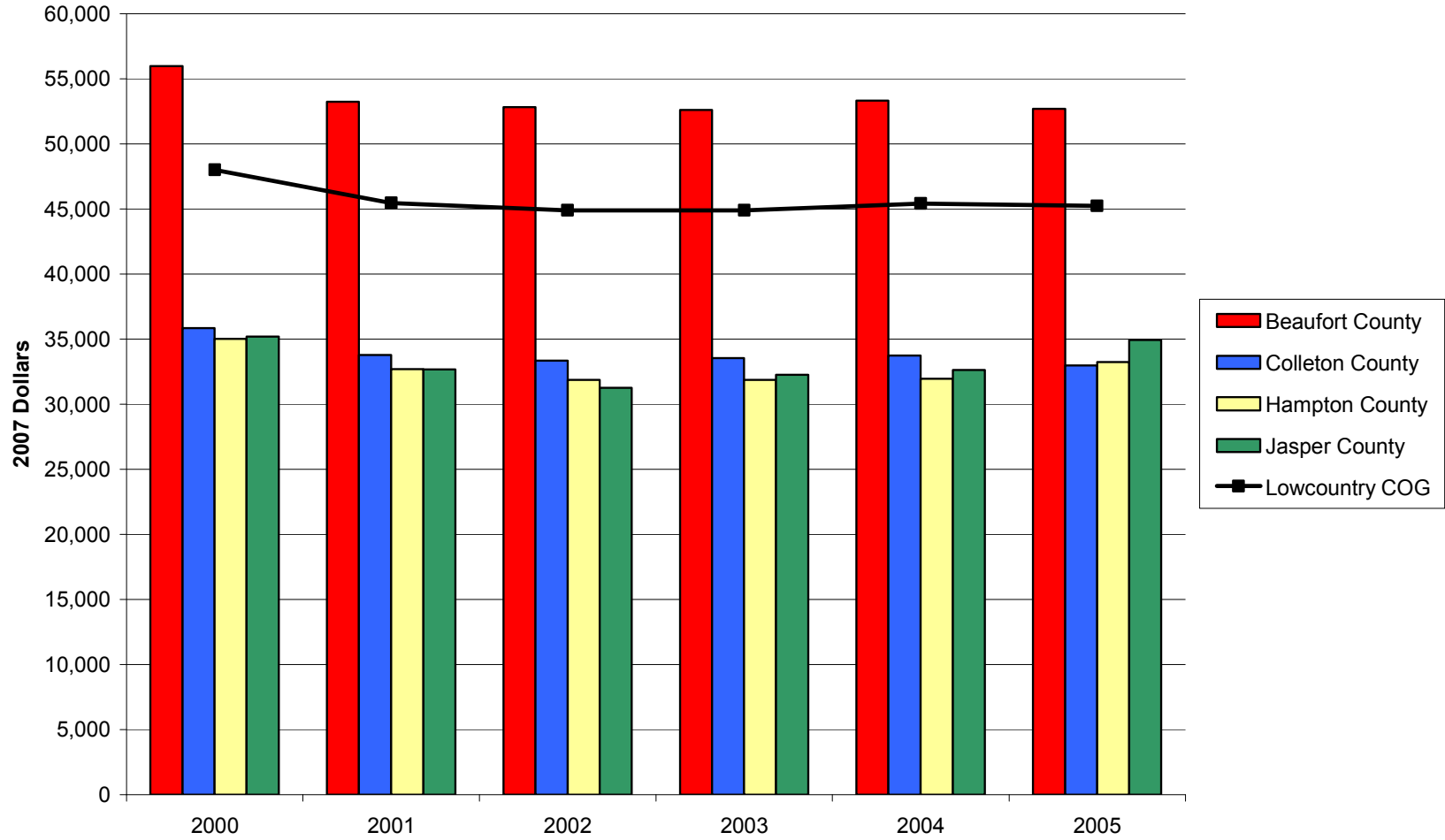
## Per Capita Income in the Lowcountry COG Region and Component Counties, 2000-2006

Source: Bureau of Economic Analysis, Regional Economic Information System (REIS): Table CA31-3



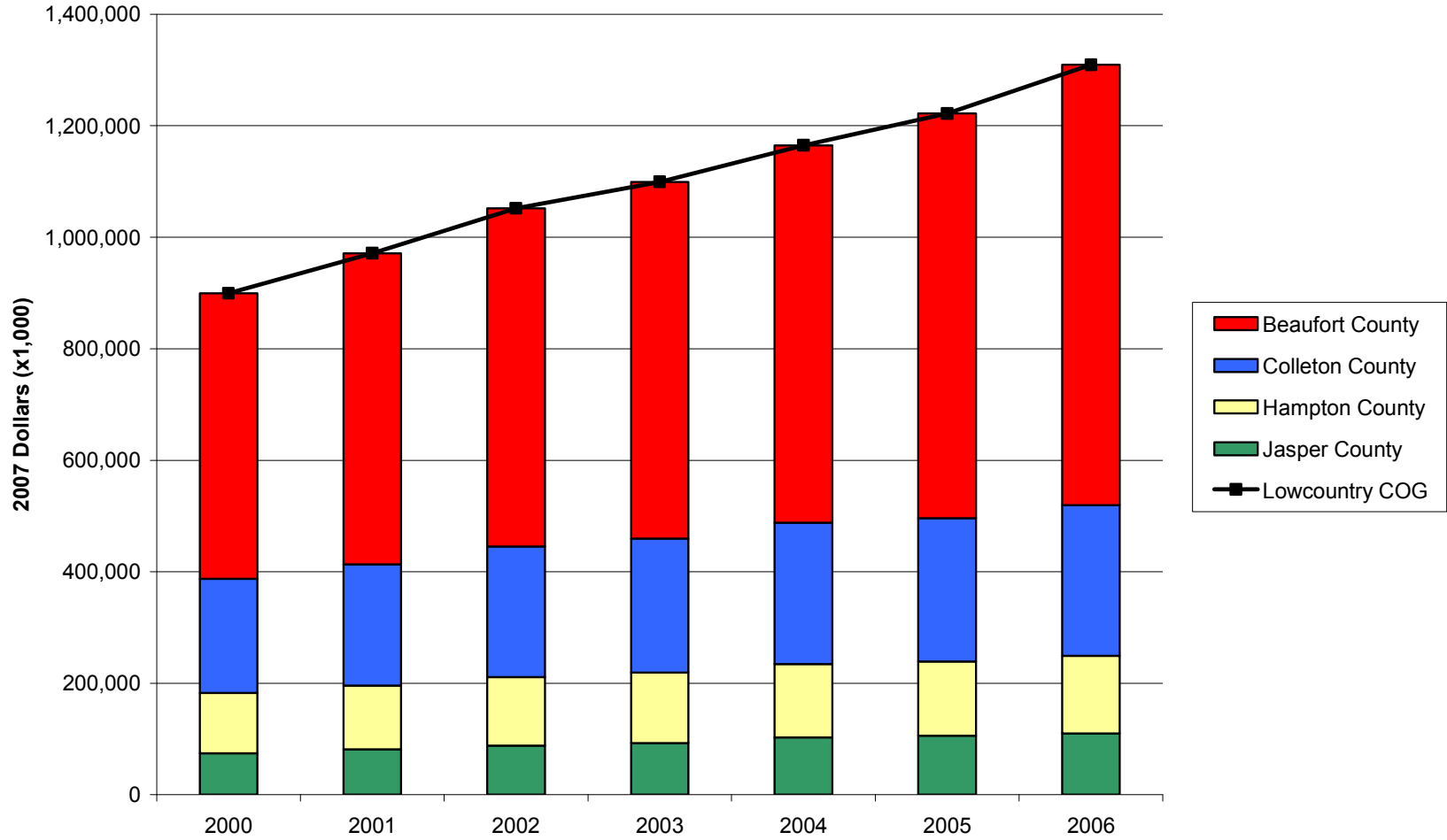
## Median Household Income in the Lowcountry COG Region and Component Counties, 2000-2005

Source: U.S. Census Bureau, Small Area Income and Poverty Estimates



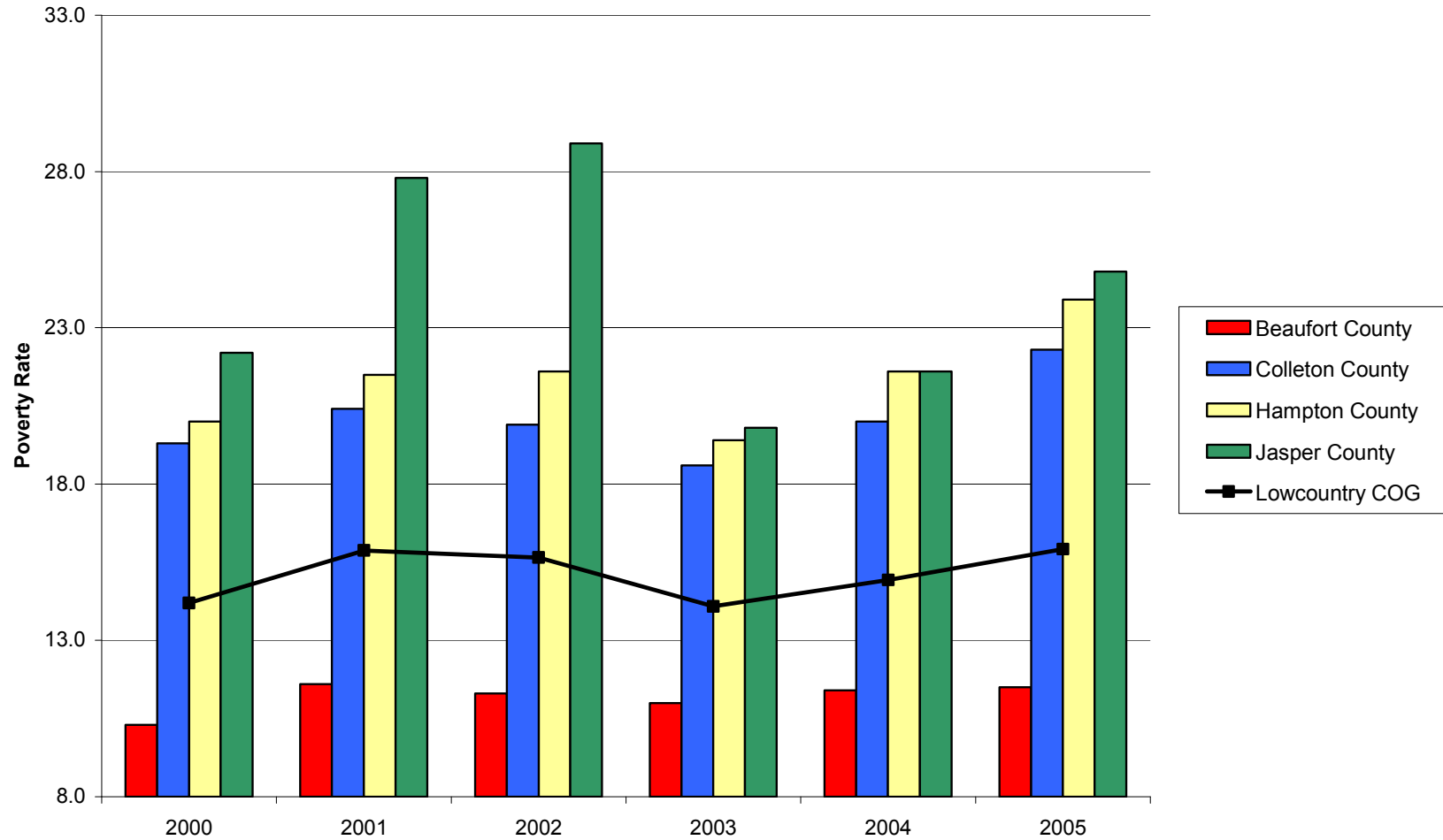
## Transfer Payments in the Lowcountry COG Region and Component Counties, 2000-2006

Source: Bureau of Economic Analysis, Regional Economic Information System (REIS): Table CA35



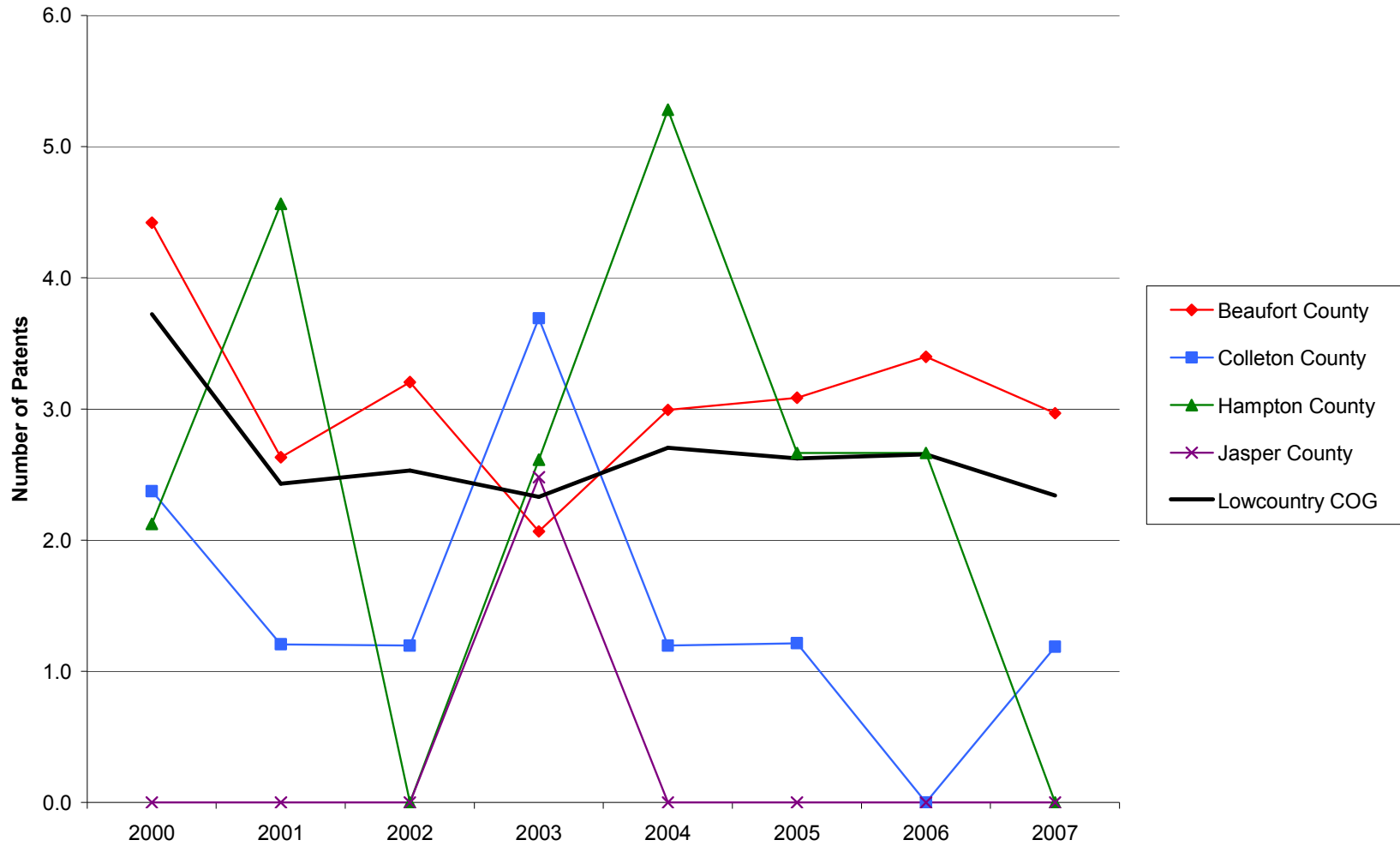
## Poverty Rates in the Lowcountry COG Region and Component Counties, 2000-2005

Source: U.S. Census Bureau, Small Area Income and Poverty Estimates



### Patents per 10,000 Employees in the Lowcountry COG Region and Component Counties, 2000-2007

Source: United States Patent and Trademark Office, Patent Electronic Business Center



### SBIR/STTR Phase I and II Awards per 1,000 Employees in the Lowcountry COG Region and Component Counties, 2000-2006

Source: U.S. Small Business Administration, Technology Resources Network

