

Indicator	Geographic Area	Year					Percent Change	
Private Establishments		2000	2004	2005	2006	2007	2000-2007	2006-2007
	Aiken County	2,759	2,746	2,889	3,135	2,792	1.2%	-10.9%
	Allendale County	180	163	160	170	151	-16.1%	-11.2%
	Bamberg County	305	300	317	330	285	-6.6%	-13.6%
	Barnwell County	429	397	422	466	395	-7.9%	-15.2%
	Calhoun County	243	253	270	278	231	-4.9%	-16.9%
	Orangeburg County	1,975	1,836	1,886	1,972	1,722	-12.8%	-12.7%
	Lower Savannah COG	5,891	5,695	5,944	6,351	5,576	-5.3%	-12.2%
	South Carolina	110,221	108,929	115,194	125,222	113,254	2.8%	-9.6%
	United States	7,646,318	8,093,142	8,294,662	8,505,496	8,680,218	13.5%	2.1%
Employment		2000	2004	2005	2006	2007	2000-2007	2006-2007
	Aiken County	49,000	49,768	48,130	47,810	48,286	-1.5%	1.0%
	Allendale County	2,537	2,060	2,018	2,929	2,543	0.2%	-13.2%
	Bamberg County	3,668	3,777	3,736	3,593	3,531	-3.7%	-1.7%
	Barnwell County	6,972	5,801	5,674	5,341	5,008	-28.2%	-6.2%
	Calhoun County	3,079	3,092	3,282	3,288	3,182	3.3%	-3.2%
	Orangeburg County	27,598	25,011	25,144	25,406	26,492	-4.0%	4.3%
	Lower Savannah COG	92,854	89,509	87,984	88,367	89,042	-4.1%	0.8%
	South Carolina	1,507,621	1,476,668	1,500,676	1,534,903	1,563,381	3.7%	1.9%
	United States	110,023,983	108,490,066	110,611,016	112,718,858	114,014,680	3.6%	1.1%
Manufacturing Employment		2000	2004	2005	2006	2007	2000-2007	2006-2007
	Aiken County	8,960	8,231	8,036	7,500	7,157	-20.1%	-4.6%
	Allendale County	1,386	1,079	1,063	1,141	1,241	-10.5%	8.8%
	Bamberg County	1,189	862	865	846	810	-31.9%	-4.3%
	Barnwell County	3,564	2,742	2,677	2,414	2,163	-39.3%	-10.4%
	Calhoun County	1,714	1,415	1,409	1,439	1,403	-18.1%	-2.5%
	Orangeburg County	8,817	7,281	7,236	6,971	7,500	-14.9%	7.6%
	Lower Savannah COG	25,630	21,610	21,286	20,311	20,274	-20.9%	-0.2%

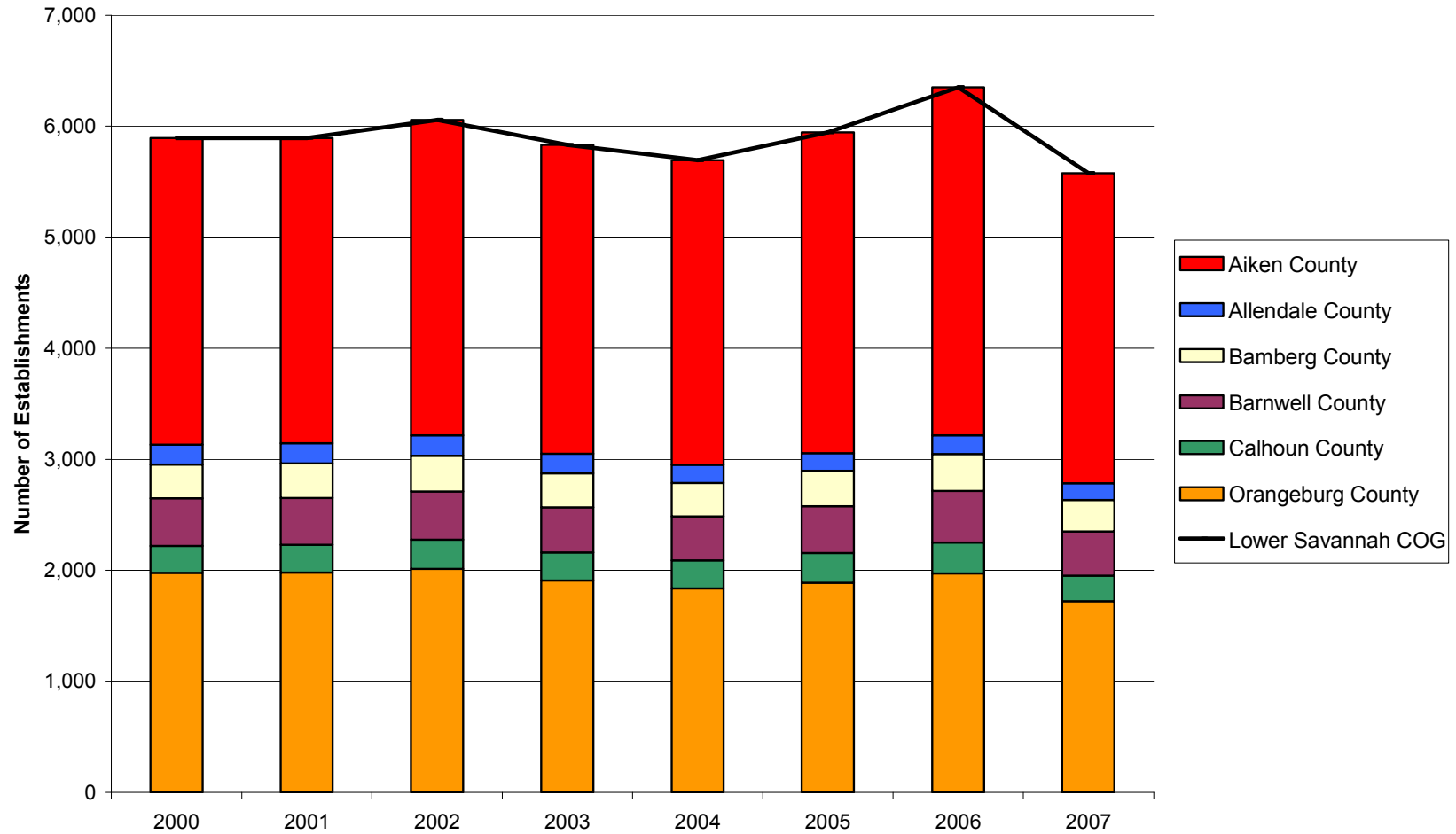
South Carolina	335,118	267,426	262,714	253,811	249,647	-25.5%	-1.6%
United States	17,314,423	14,257,380	14,190,394	14,110,663	13,834,745	-20.1%	-2.0%

Unemployment	2000	2004	2005	2006	2007	2000-2007	2006-2007
Aiken County	2,588	4,170	4,351	4,749	4,146	60.2%	-12.7%
Allendale County	188	317	349	388	390	107.4%	0.5%
Bamberg County	325	468	566	634	599	84.3%	-5.5%
Barnwell County	501	894	848	917	854	70.5%	-6.9%
Calhoun County	263	468	520	501	459	74.5%	-8.4%
Orangeburg County	2,327	3,742	3,909	3,652	3,480	49.5%	-4.7%
Lower Savannah COG	6,192	10,059	10,543	11,259	9,928	60.3%	-11.8%
South Carolina	70,821	138,938	139,693	134,523	125,262	76.9%	-6.9%
United States	5,692,000	8,149,000	7,591,000	7,001,000	7,078,000	24.3%	1.1%

Unemployment Rate	2000	2004	2005	2006	2007	Rate Change	
						2000-2007	2006-2007
Aiken County	3.7	5.7	5.8	6.3	5.5	1.8	-0.8
Allendale County	5.1	9.6	10.6	10.0	10.9	5.8	0.9
Bamberg County	5.0	7.3	8.6	9.7	9.5	4.5	-0.2
Barnwell County	4.9	9.5	9.0	9.8	9.6	4.7	-0.2
Calhoun County	3.7	6.6	7.3	7.1	6.4	2.7	-0.7
Orangeburg County	5.7	9.4	9.6	9.1	8.5	2.8	-0.6
Lower Savannah COG	4.5	7.2	7.4	7.9	7.0	2.5	-0.9
South Carolina	3.6	6.8	6.7	6.4	5.9	2.3	-0.5
United States	4.0	5.5	5.1	4.6	4.6	0.6	0.0

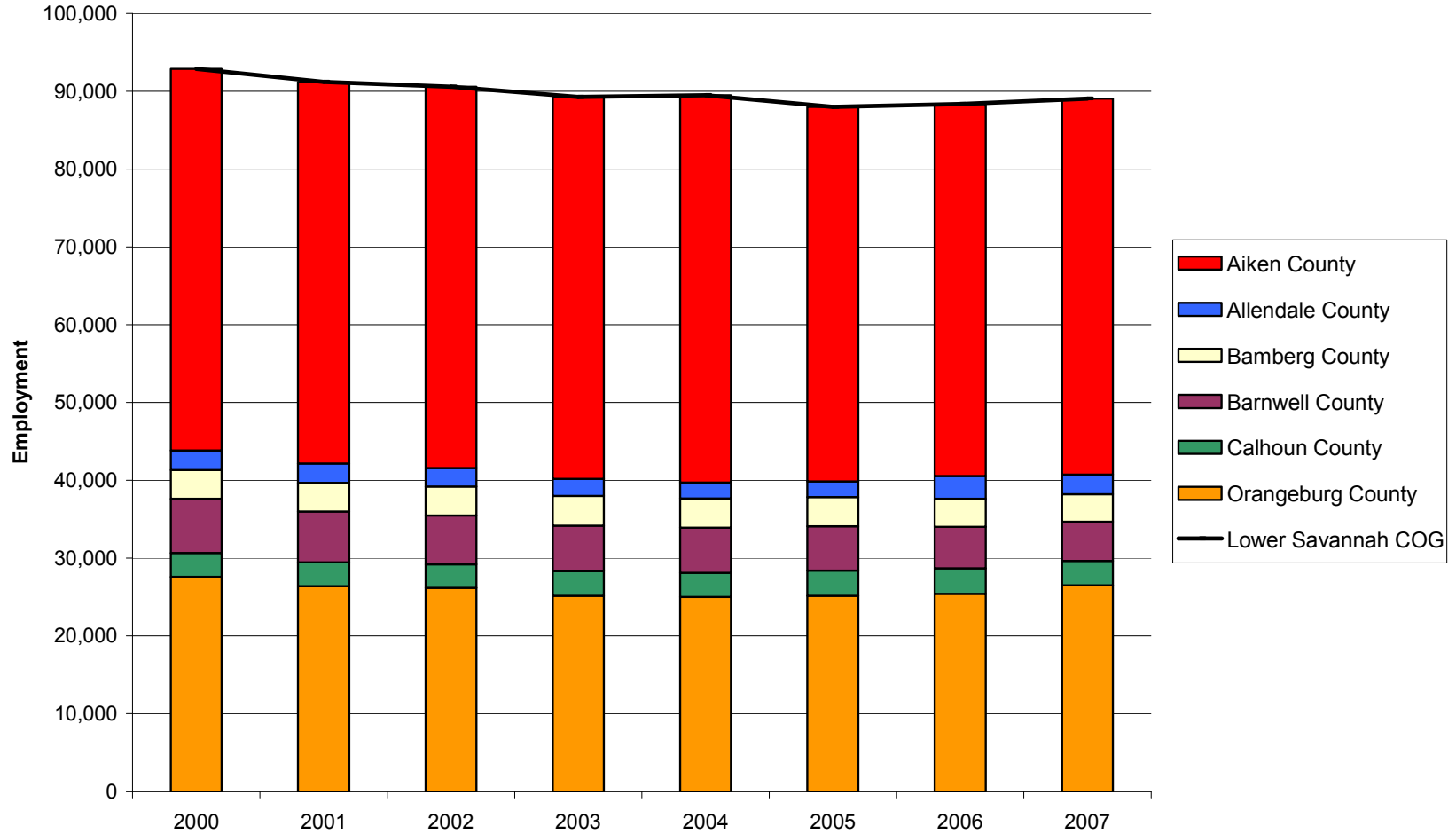
Private Establishments in the Lower Savannah COG Region and Component Counties, 2000-2007

Source: Quarterly Census of Employment and Wages (2000-2007). U.S. Department of Labor, Bureau of Labor Statistics



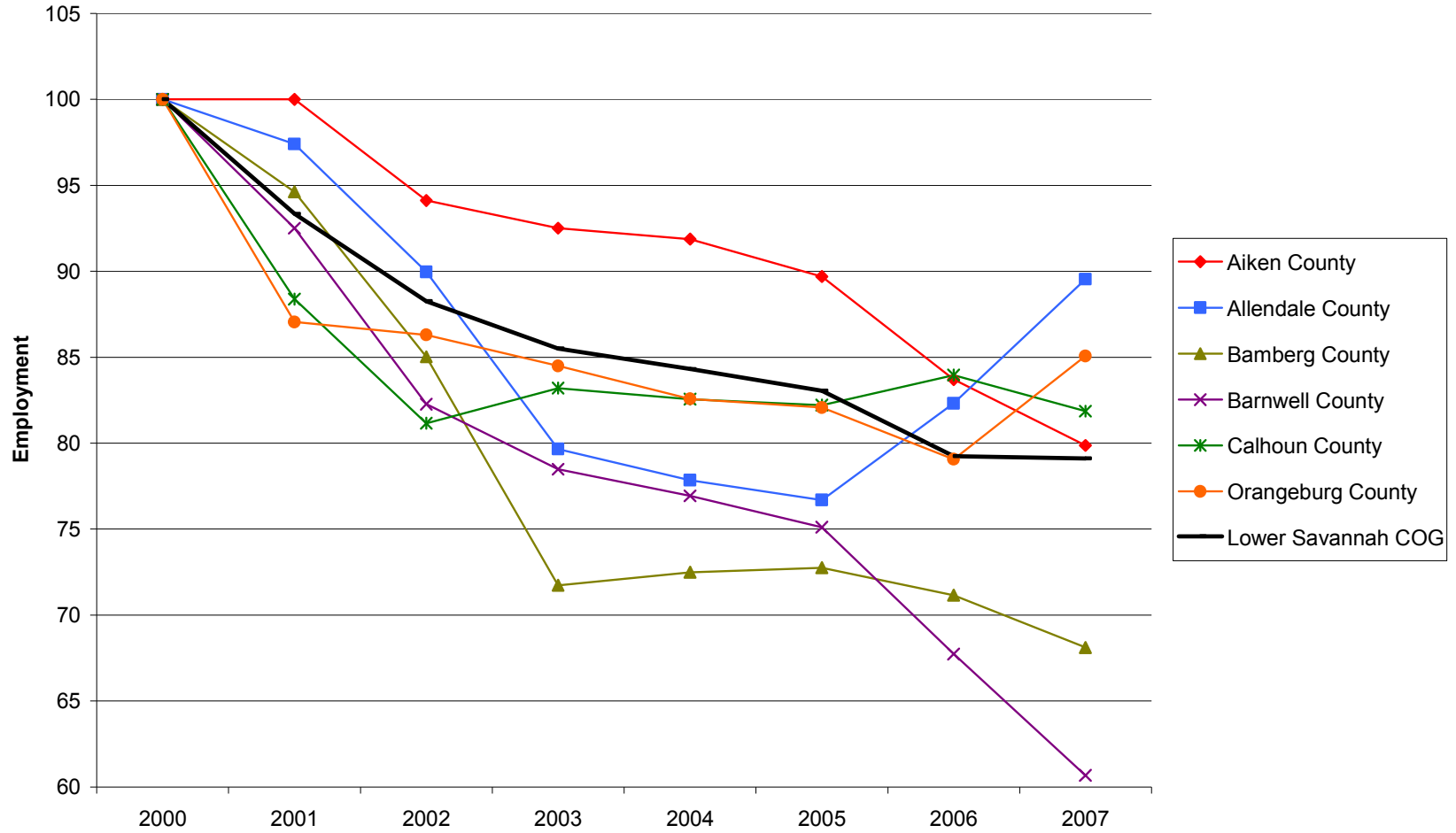
Private Employment in the Lower Savannah COG Region and Component Counties, 2000-2007

Source: Quarterly Census of Employment and Wages (2000-2007). U.S. Department of Labor, Bureau of Labor Statistics



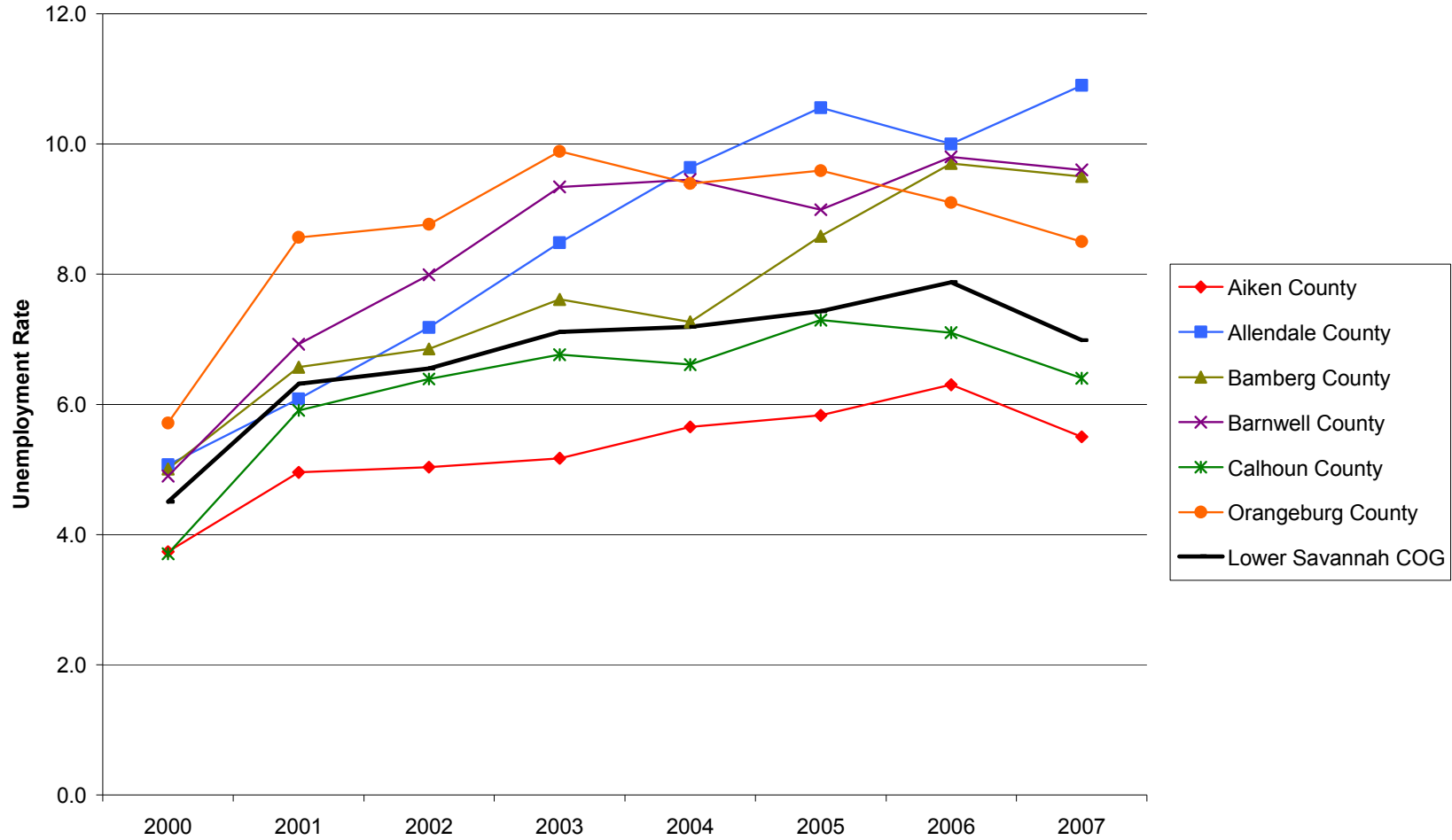
Manufacturing Employment Trends in the Lower Savannah COG Region and Component Counties, 2000-2007

Source: Quarterly Census of Employment and Wages (2000-2007). U.S. Department of Labor, Bureau of Labor Statistics



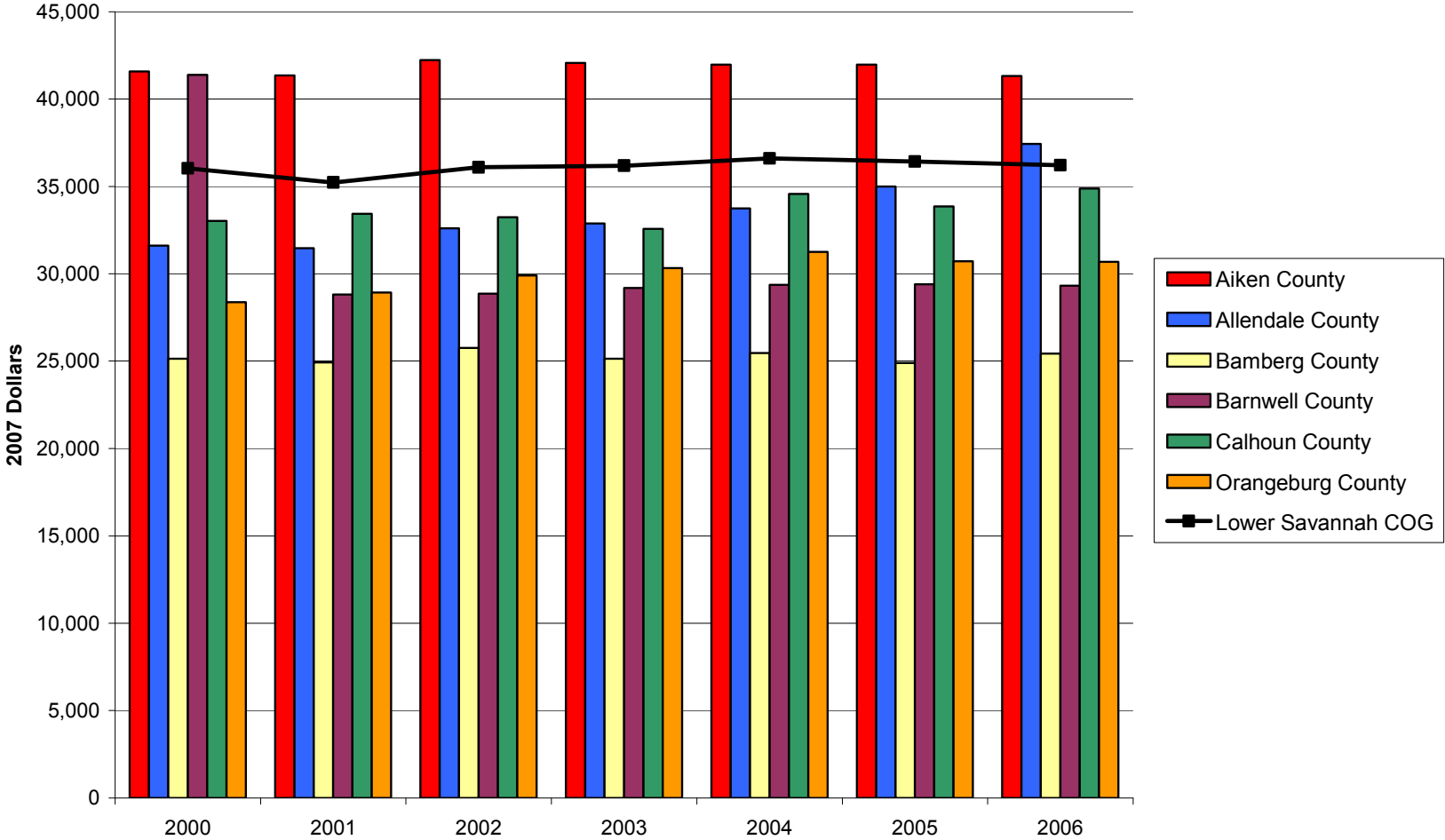
Unemployment Rates in the Lower Savannah COG Region and Component Counties, 2000-2007

Source: Local Area Unemployment Statistics. U.S. Department of Labor, Bureau of Labor Statistics



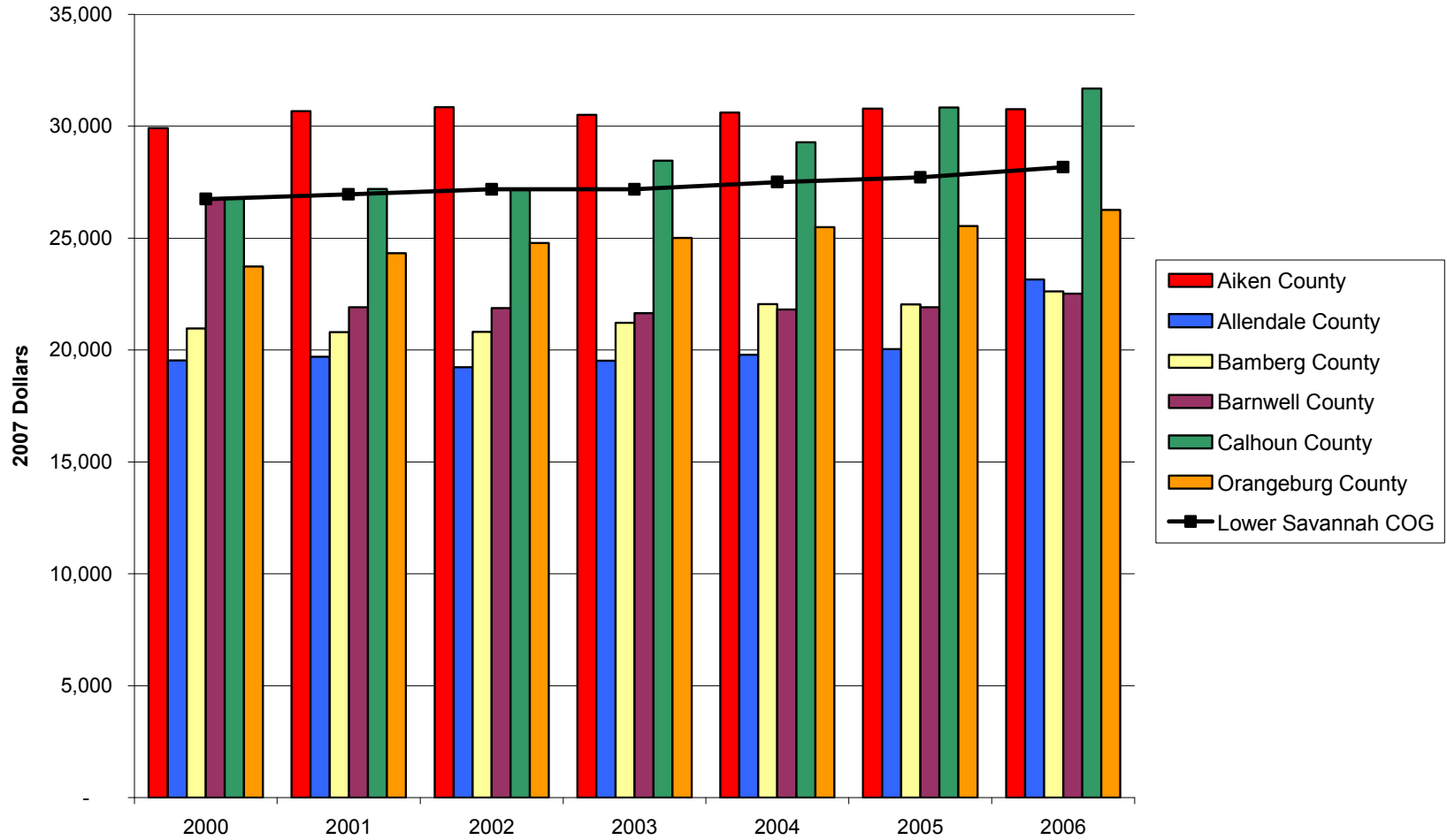
Earnings per Worker in the Lower Savannah COG Region and Component Counties, 2000-2006

Source: Bureau of Economic Analysis, Regional Economic Information System (REIS): Table CA30



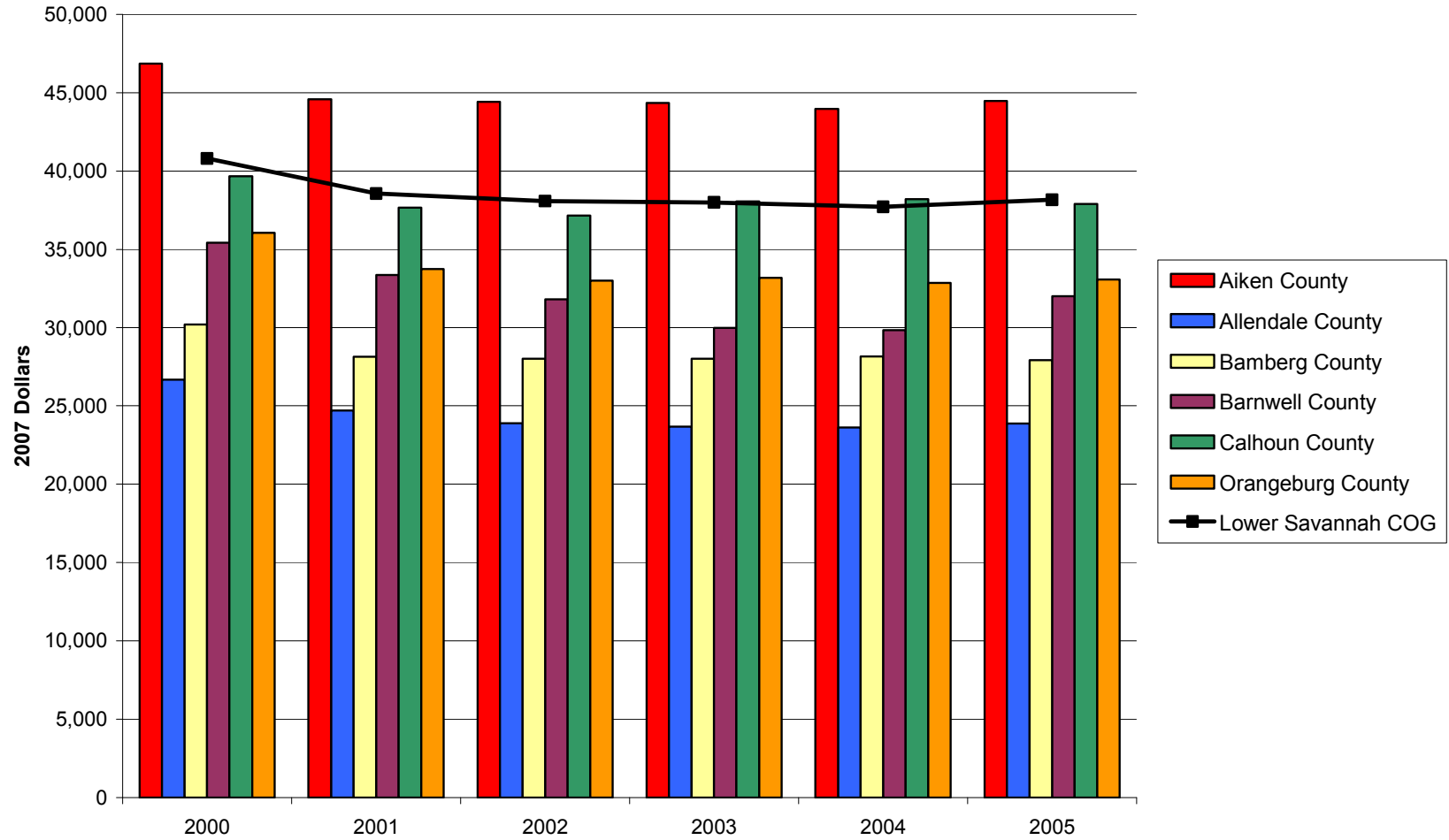
Per Capita Income in the Lower Savannah COG Region and Component Counties, 2000-2006

Source: Bureau of Economic Analysis, Regional Economic Information System (REIS): Table CA31-3



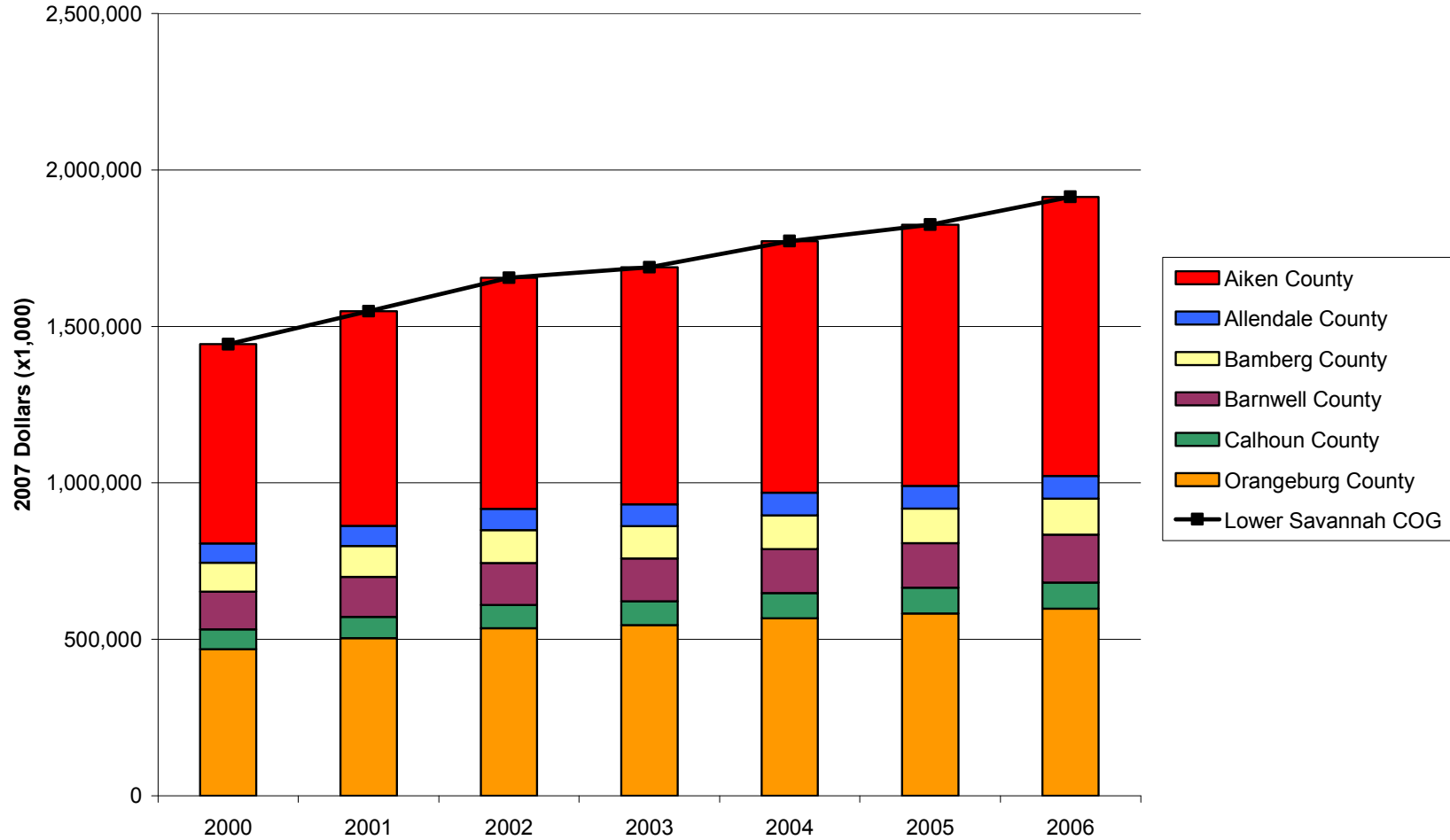
Median Household Income in the Lower Savannah COG Region and Component Counties, 2000-2005

Source: U.S. Census Bureau, Small Area Income and Poverty Estimates



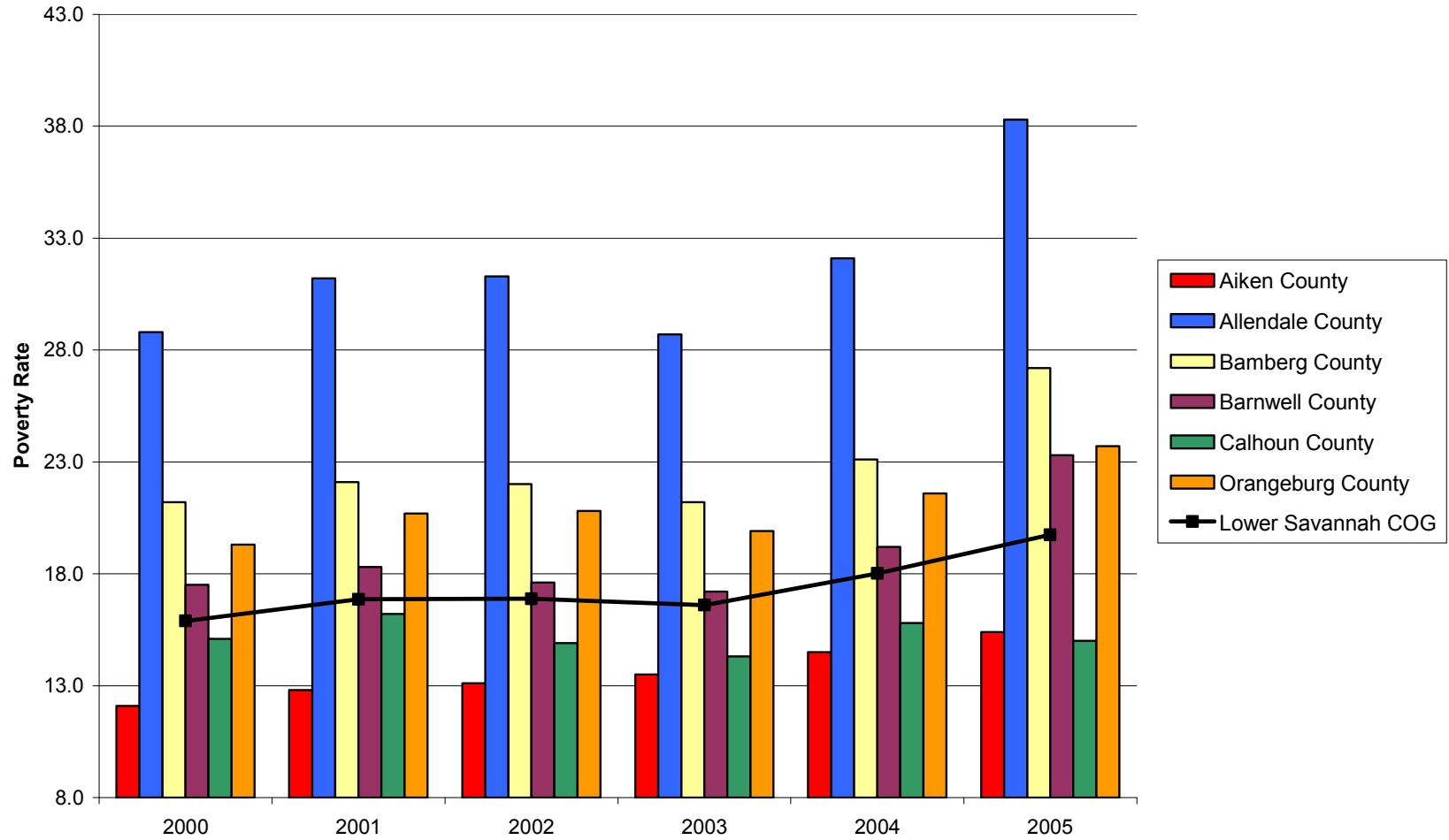
Transfer Payments in the Lower Savannah COG Region and Component Counties, 2000-2006

Source: Bureau of Economic Analysis, Regional Economic Information System (REIS): Table CA35



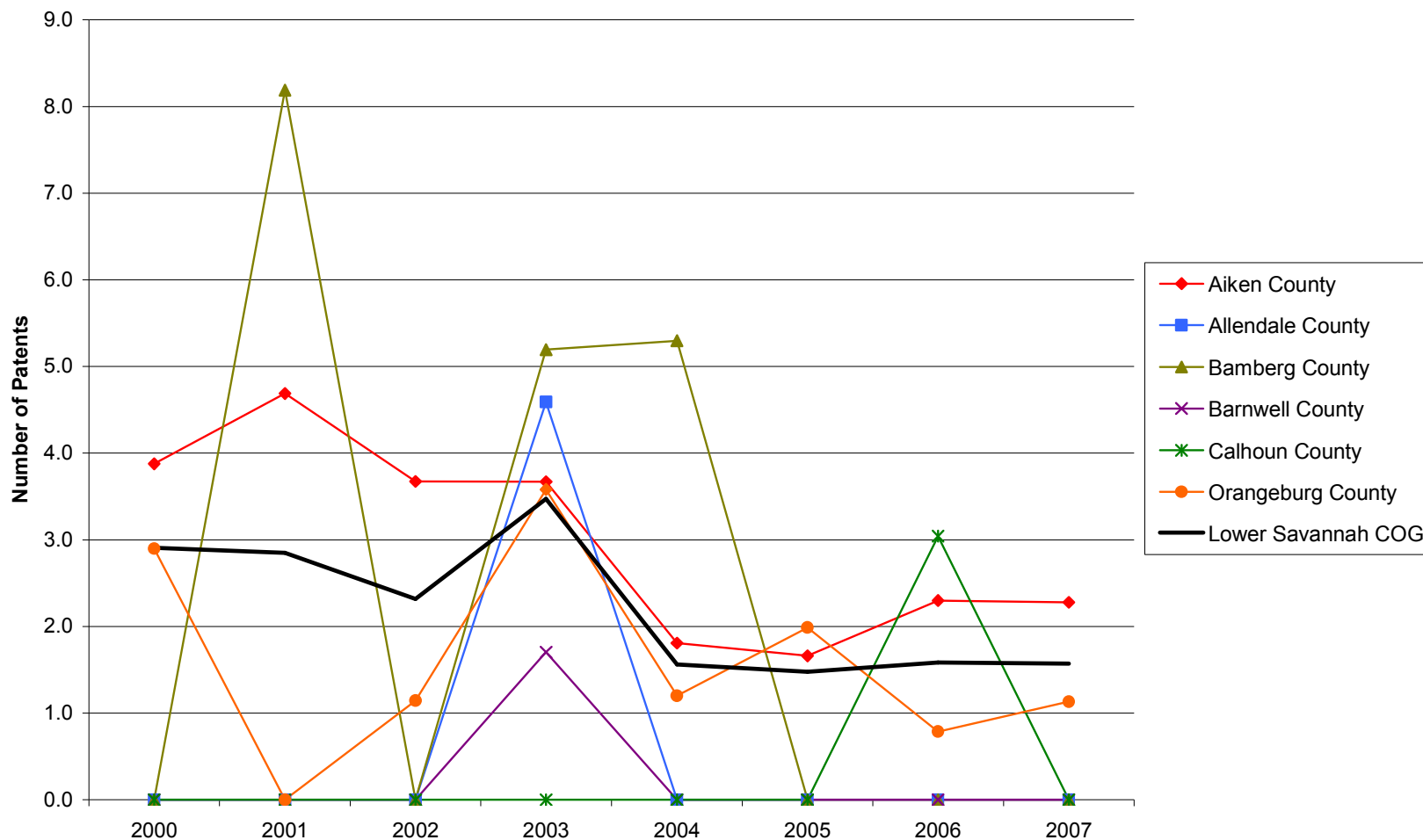
Poverty Rates in the Lower Savannah COG Region and Component Counties, 2000-2005

Source: U.S. Census Bureau, Small Area Income and Poverty Estimates



Patents per 10,000 Employees in the Lower Savannah COG Region and Component Counties, 2000-2007

Source: United States Patent and Trademark Office, Patent Electronic Business Center



SBIR/STTR Phase I and II Awards per 1,000 Employees in the Lower Savannah COG Region and Component Counties, 2000-2006

Source: U.S. Small Business Administration, Technology Resources Network

