

A. Economic Indicators: Establishments and Employment, Pee Dee COG

Indicator	Geographic Area	Year					Percent Change	
Private Establishments		2000	2004	2005	2006	2007	2000-2007	2006-2007
	Chesterfield County	756	729	746	784	700	-7.4%	-10.7%
	Darlington County	1,268	1,173	1,190	1,232	1,091	-14.0%	-11.4%
	Dillon County	547	528	544	563	498	-9.0%	-11.5%
	Florence County	3,388	3,167	3,218	3,400	3,092	-8.7%	-9.1%
	Marion County	691	603	613	642	558	-19.2%	-13.1%
	Marlboro County	471	415	417	426	376	-20.2%	-11.7%
	Pee Dee COG	7,121	6,615	6,728	7,047	6,315	-11.3%	-10.4%
	South Carolina	110,221	108,929	115,194	125,222	113,254	2.8%	-9.6%
	United States	7,646,318	8,093,142	8,294,662	8,505,496	8,680,218	13.5%	2.1%
Employment		2000	2004	2005	2006	2007	2000-2007	2006-2007
	Chesterfield County	14,012	11,788	11,523	11,934	12,239	-12.7%	2.6%
	Darlington County	19,232	17,795	17,776	17,809	17,518	-8.9%	-1.6%
	Dillon County	8,075	7,464	7,893	7,815	7,510	-7.0%	-3.9%
	Florence County	50,981	50,400	47,337	48,588	49,964	-2.0%	2.8%
	Marion County	9,230	7,326	6,718	6,431	6,085	-34.1%	-5.4%
	Marlboro County	6,146	6,127	6,145	6,154	5,446	-11.4%	-11.5%
	Pee Dee COG	107,676	100,900	97,392	98,731	98,762	-8.3%	0.0%
	South Carolina	1,507,621	1,476,668	1,500,676	1,534,903	1,563,381	3.7%	1.9%
	United States	110,023,983	108,490,066	110,611,016	112,718,858	114,014,680	3.6%	1.1%
Manufacturing Employment		2000	2004	2005	2006	2007	2000-2007	2006-2007
	Chesterfield County	7,119	5,399	5,006	5,113	5,080	-28.6%	-0.6%
	Darlington County	6,960	5,685	5,745	5,592	5,215	-25.1%	-6.7%

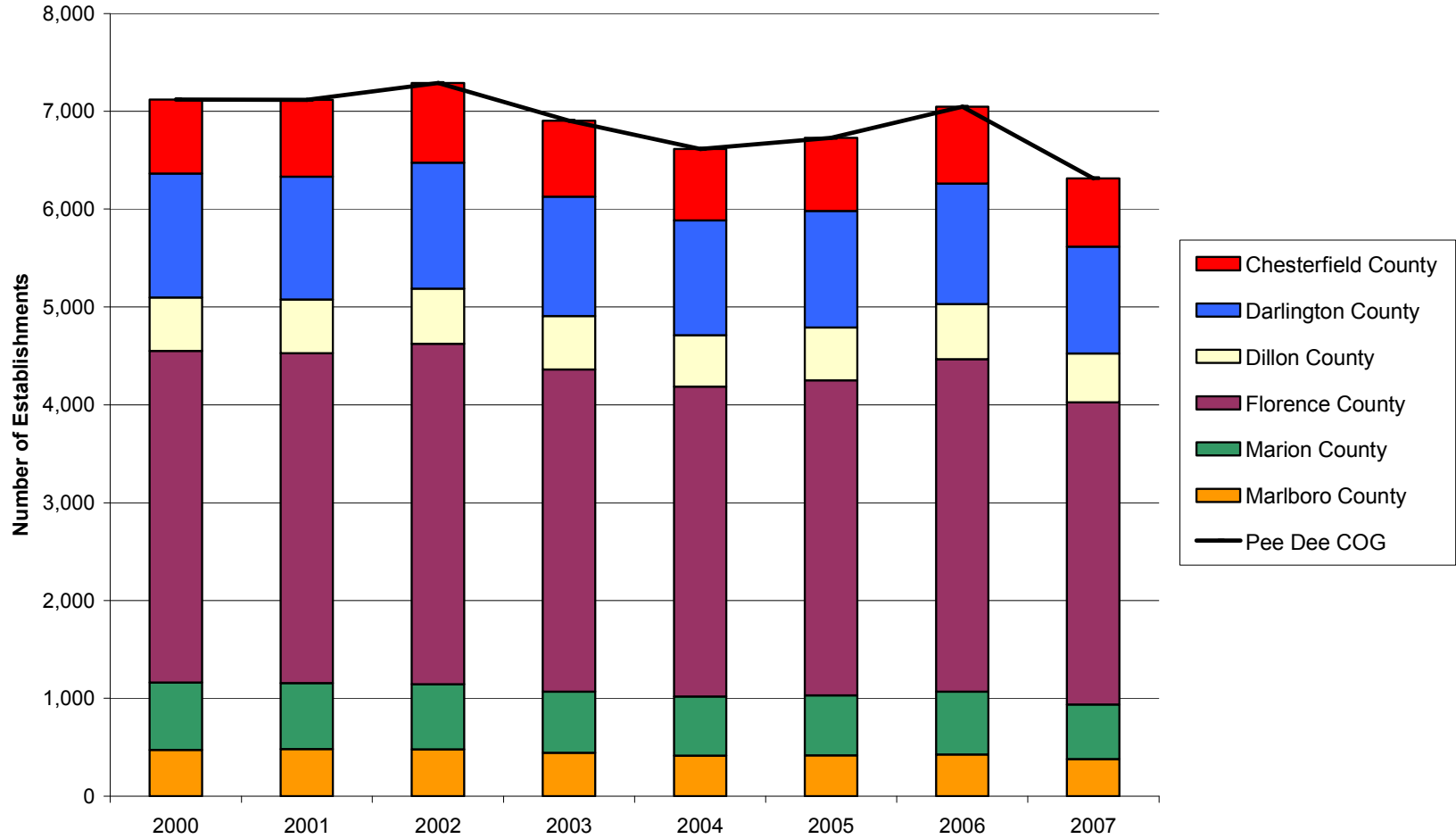
County							
Dillon County	3,289	3,036	2,629	2,609	2,401	-27.0%	-8.0%
Florence County	11,105	8,783	8,703	8,486	8,161	-26.5%	-3.8%
Marion County	4,429	2,838	2,313	2,038	1,669	-62.3%	-18.1%
Marlboro County	3,015	3,078	3,068	3,048	2,511	-16.7%	-17.6%
Pee Dee COG	35,917	28,819	27,464	26,886	25,037	-30.3%	-6.9%
South Carolina	335,118	267,426	262,714	253,811	249,647	-25.5%	-1.6%
United States	17,314,423	14,257,380	14,190,394	14,110,663	13,834,745	-20.1%	-2.0%

Unemployment	2000	2004	2005	2006	2007	2000-2007	2006-2007
Chesterfield County	874	1,824	1,708	1,755	1,512	73.0%	-13.8%
Darlington County	1,507	2,532	2,664	2,359	2,113	40.2%	-10.4%
Dillon County	908	1,258	1,280	1,233	1,243	36.9%	0.8%
Florence County	2,430	5,133	5,509	4,475	4,004	64.8%	-10.5%
Marion County	1,421	1,917	1,883	1,595	1,561	9.9%	-2.1%
Marlboro County	818	1,613	1,429	1,401	1,478	80.7%	5.5%
Pee Dee COG	7,958	14,277	14,473	13,197	11,911	49.7%	-9.7%
South Carolina	70,821	138,938	139,693	134,523	125,262	76.9%	-6.9%
United States	5,692,000	8,149,000	7,591,000	7,001,000	7,078,000	24.3%	1.1%

						Rate Change	
Unemployment Rate	2000	2004	2005	2006	2007	2000-2007	2006-2007
Chesterfield County	4.5	10.0	9.4	9.4	8.1	3.6	-1.3
Darlington County	4.8	8.2	8.7	7.6	6.7	1.9	-0.9
Dillon County	6.7	9.7	9.4	9.2	9.3	2.6	0.1
Florence County	4.0	8.4	8.9	7.2	6.3	2.3	-0.9
Marion County	9.2	13.5	13.6	11.9	12.0	2.8	0.1
Marlboro County	6.7	12.9	11.3	11.0	12.2	5.5	1.2
Pee Dee COG	5.2	9.5	9.6	8.6	7.8	2.6	-0.8
South Carolina	3.6	6.8	6.7	6.4	5.9	2.3	-0.5
United States	4.0	5.5	5.1	4.6	4.6	0.6	0.0

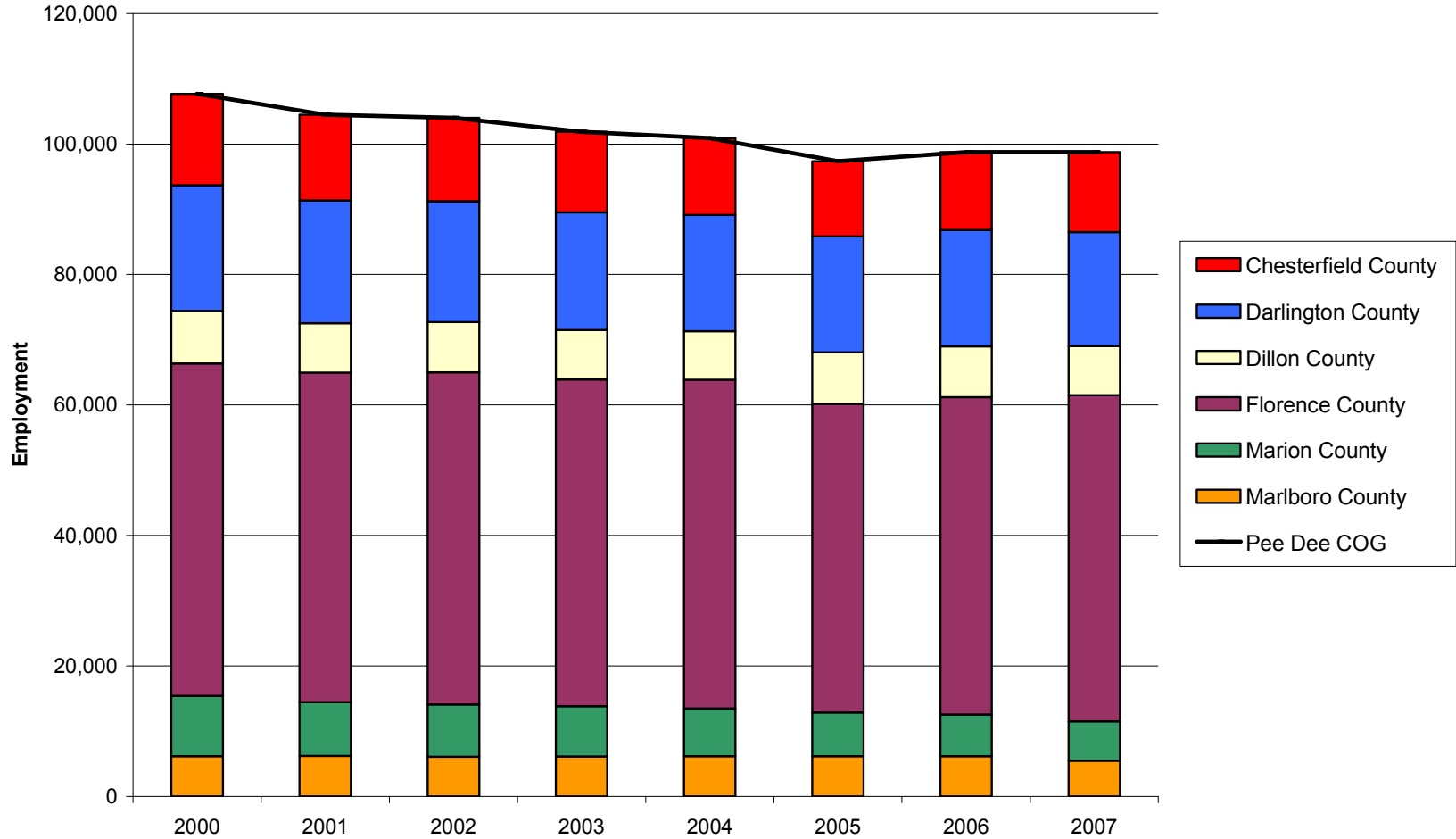
Private Establishments in the Pee Dee COG Region and Component Counties, 2000-2007

Source: Quarterly Census of Employment and Wages (2000-2007). U.S. Department of Labor, Bureau of Labor Statistics



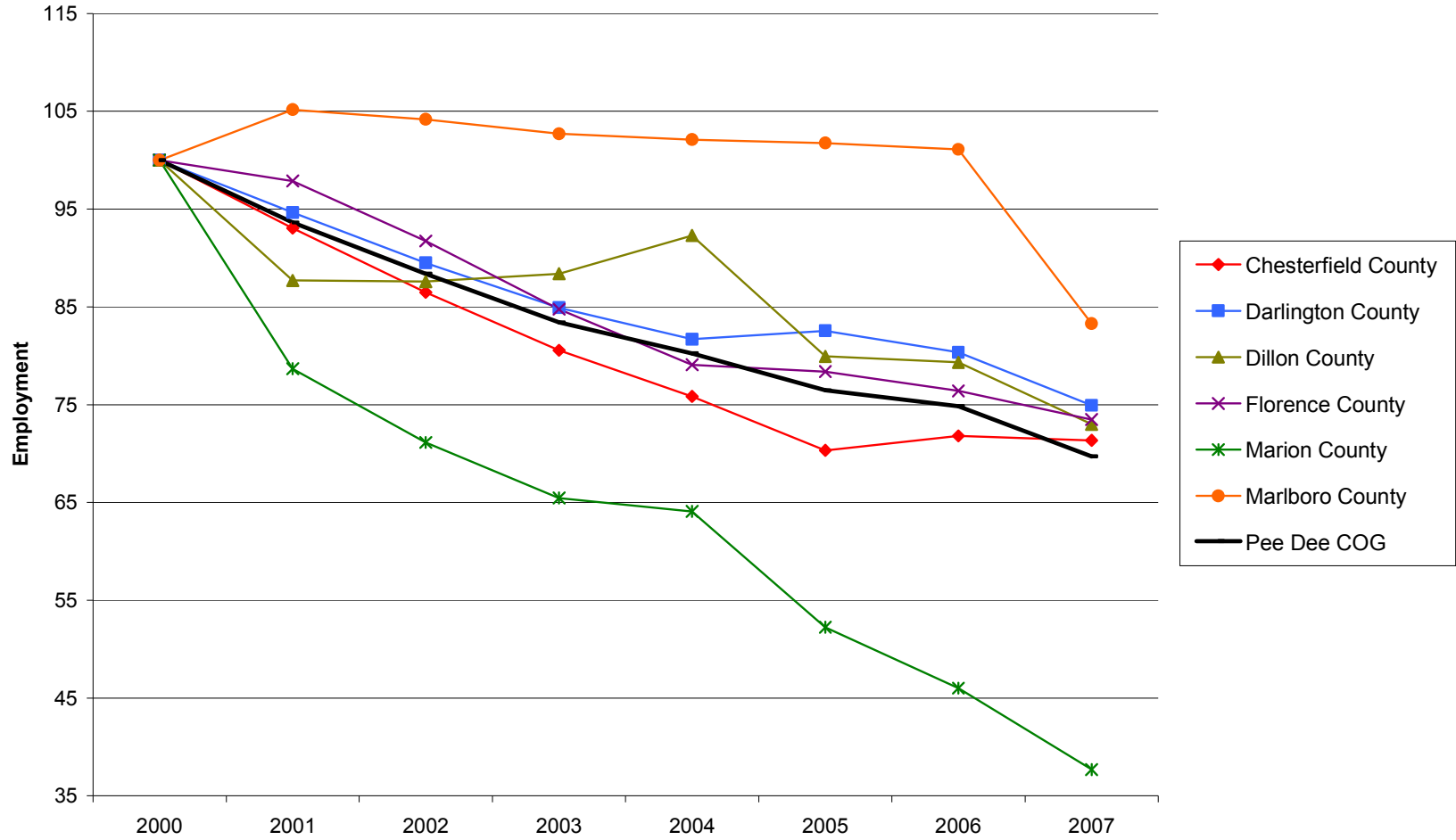
Private Employment in the Pee Dee COG Region and Component Counties, 2000-2007

Source: Quarterly Census of Employment and Wages (2000-2007). U.S. Department of Labor, Bureau of Labor Statistics



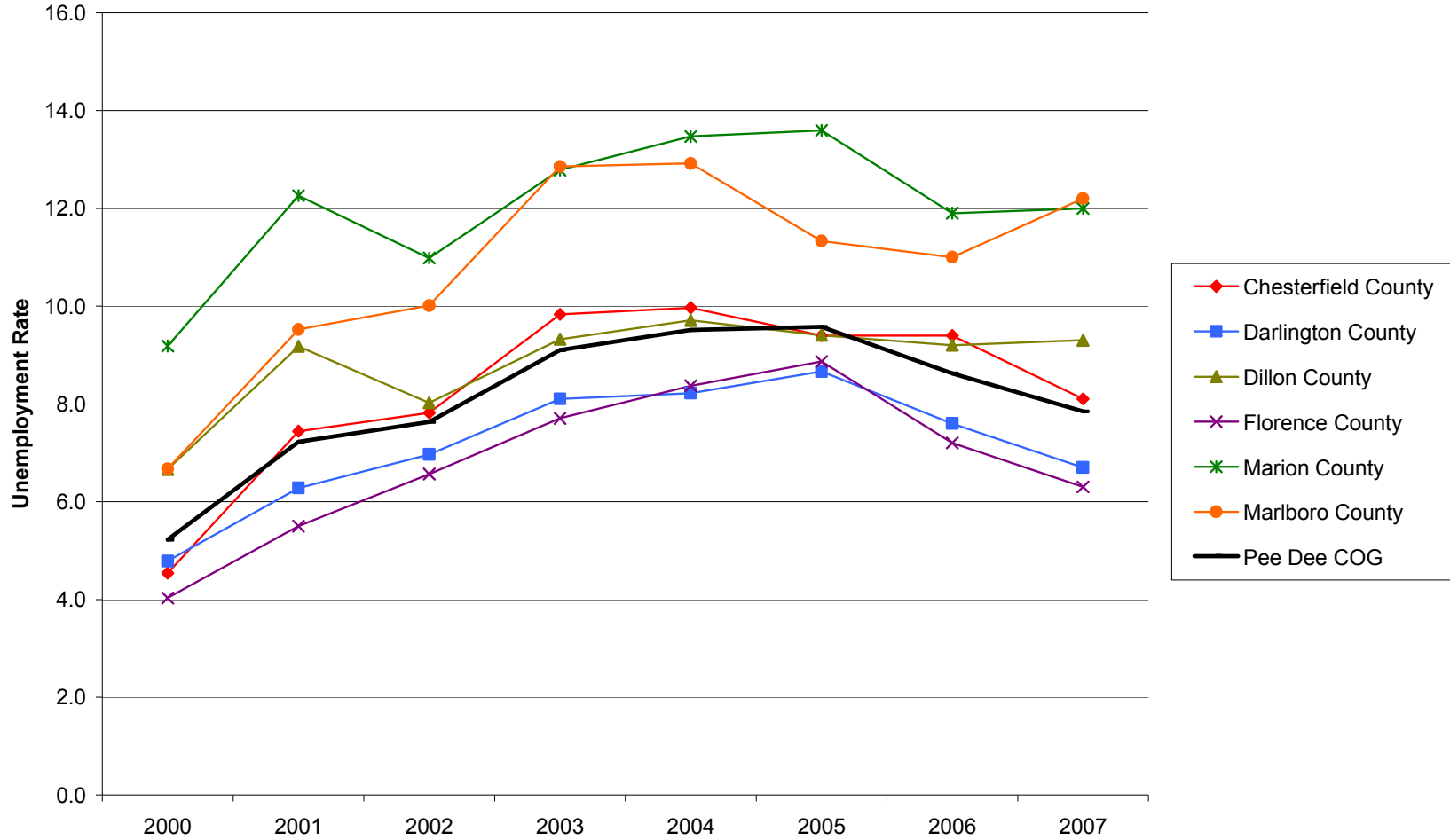
Manufacturing Employment Trends in the Pee Dee COG Region and Component Counties, 2000-2007

Source: Quarterly Census of Employment and Wages (2000-2007). U.S. Department of Labor, Bureau of Labor Statistics



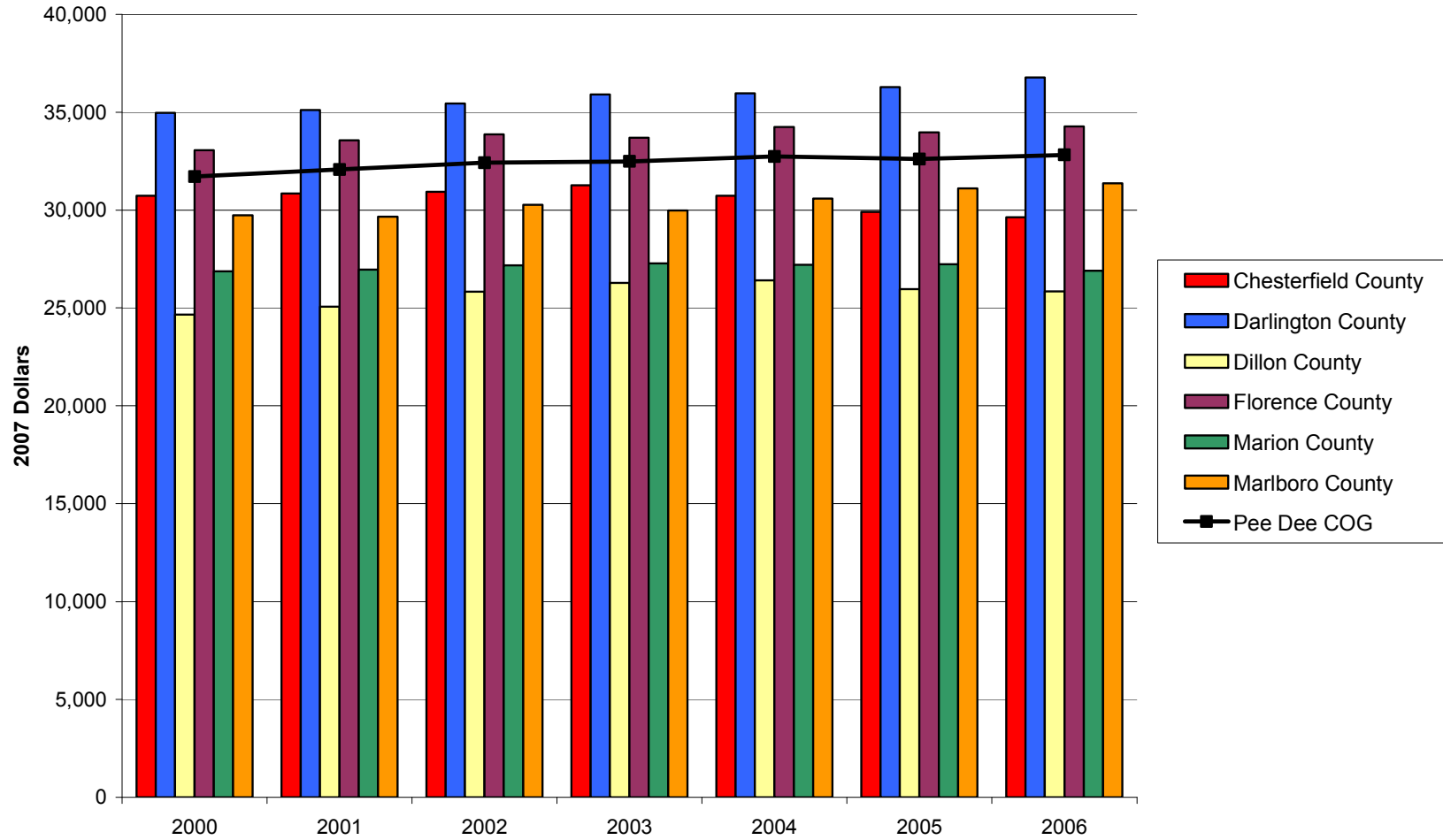
Unemployment Rates in the Pee Dee COG Region and Component Counties, 2000-2007

Source: Local Area Unemployment Statistics. U.S. Department of Labor, Bureau of Labor Statistics



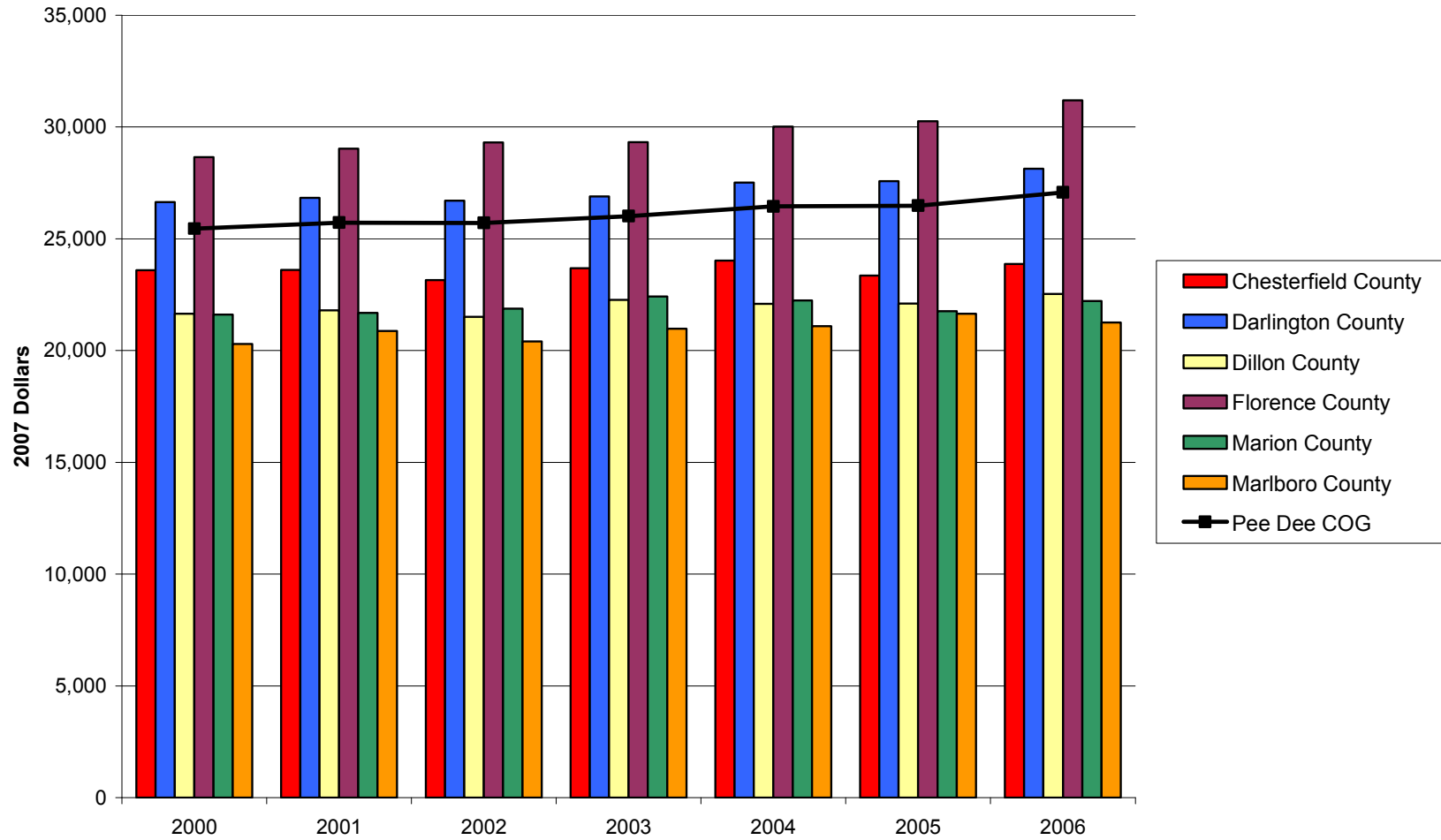
Earnings per Worker in the Pee Dee COG Region and Component Counties, 2000-2006

Source: Bureau of Economic Analysis, Regional Economic Information System (REIS): Table CA30



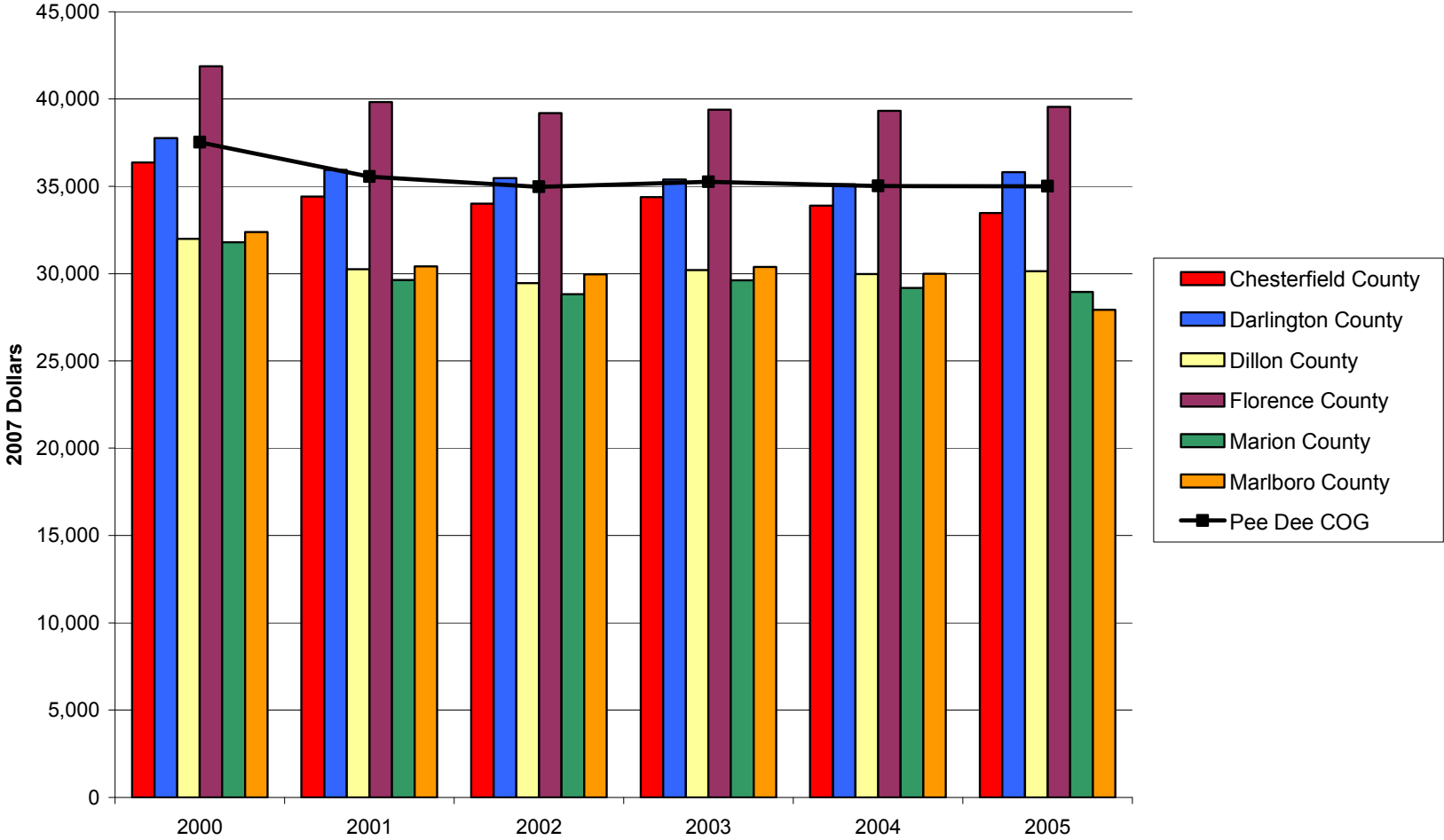
Per Capita Income in the Pee Dee COG Region and Component Counties, 2000-2006

Source: Bureau of Economic Analysis, Regional Economic Information System (REIS): Table CA31-3



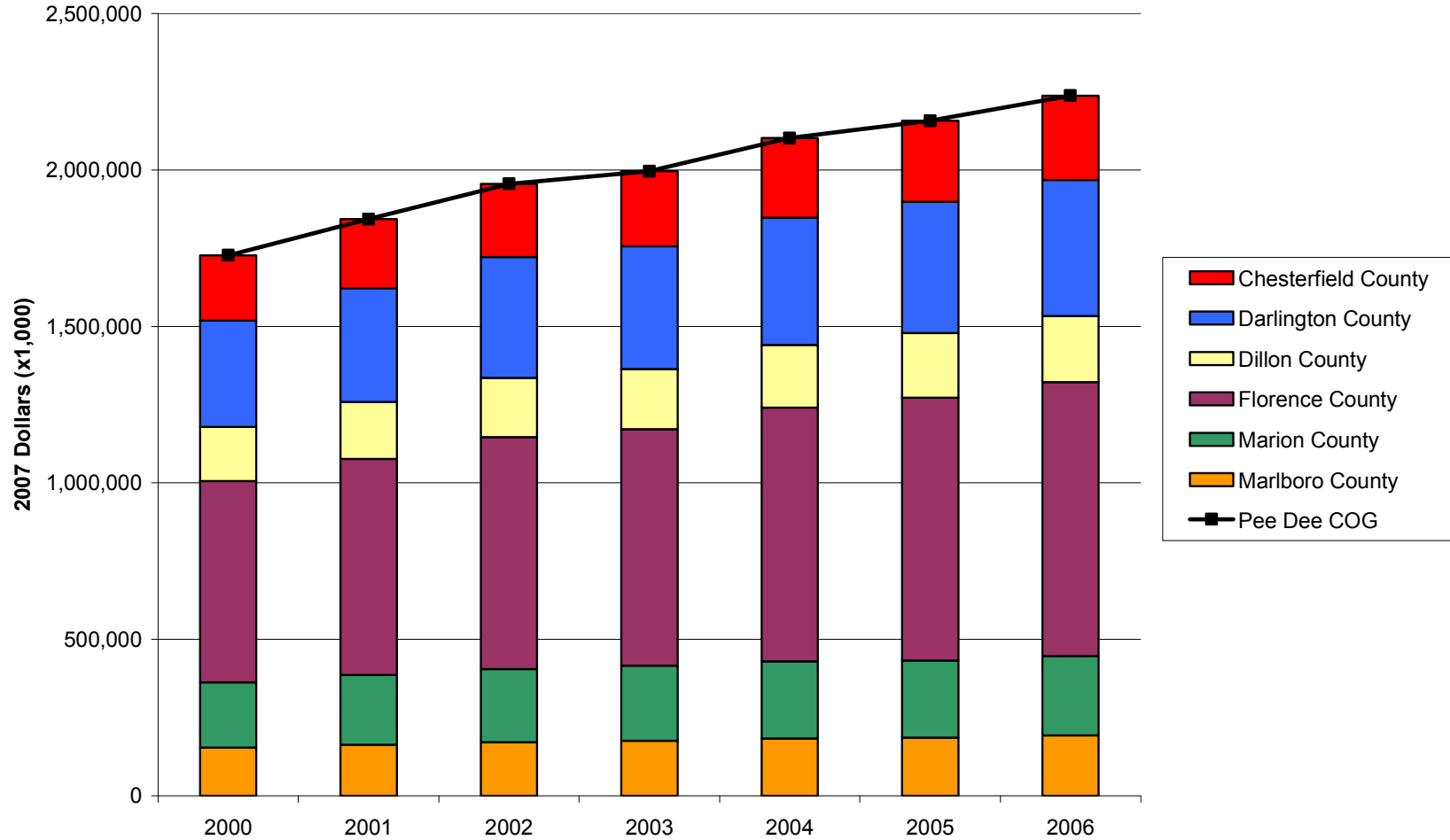
Median Household Income in the Pee Dee COG Region and Component Counties, 2000-2005

Source: U.S. Census Bureau, Small Area Income and Poverty Estimates



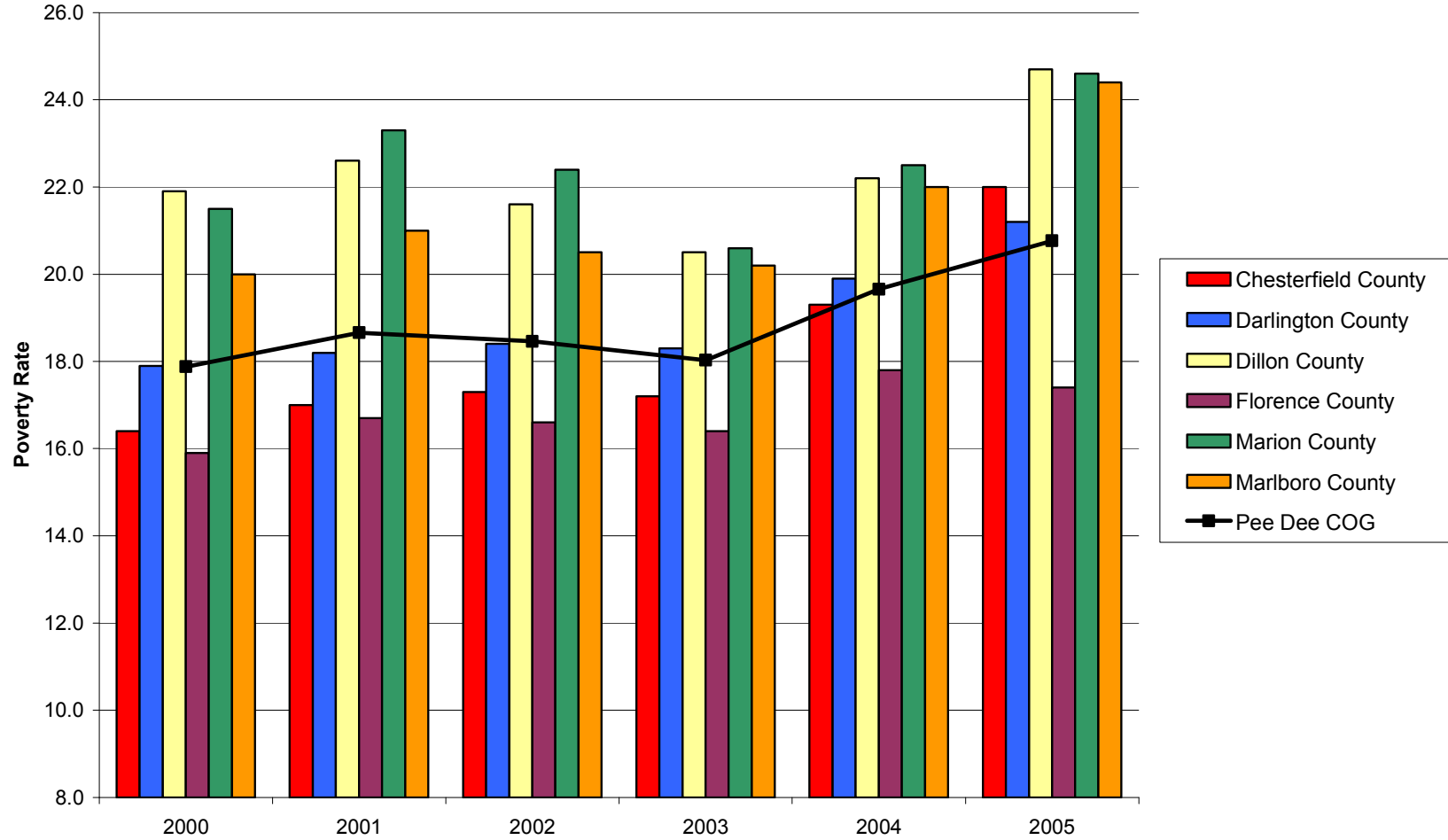
Transfer Payments in the Pee Dee COG Region and Component Counties, 2000-2006

Source: Bureau of Economic Analysis, Regional Economic Information System (REIS): Table CA35



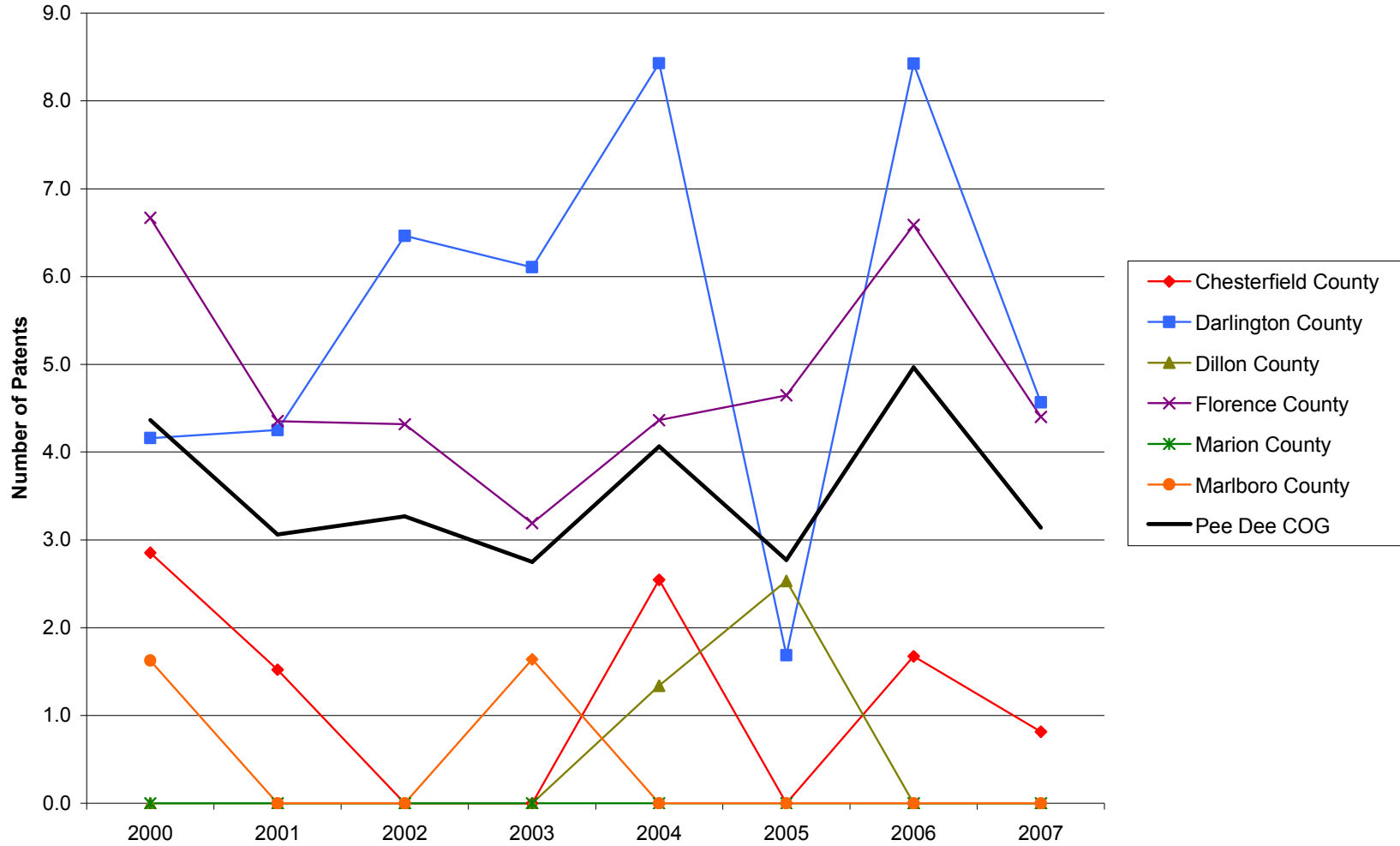
Poverty Rates in the Pee Dee COG Region and Component Counties, 2000-2005

Source: U.S. Census Bureau, Small Area Income and Poverty Estimates



Patents per 10,000 Employees in the Pee Dee COG Region and Component Counties, 2000-2007

Source: United States Patent and Trademark Office, Patent Electronic Business Center



SBIR/STTR Phase I and II Awards per 1,000 Employees in the Pee Dee COG Region and Component Counties, 2000-2006

Source: U.S. Small Business Administration, Technology Resources Network

