

### A. Economic Indicators: Establishments and Employment, Santee-Lynches COG

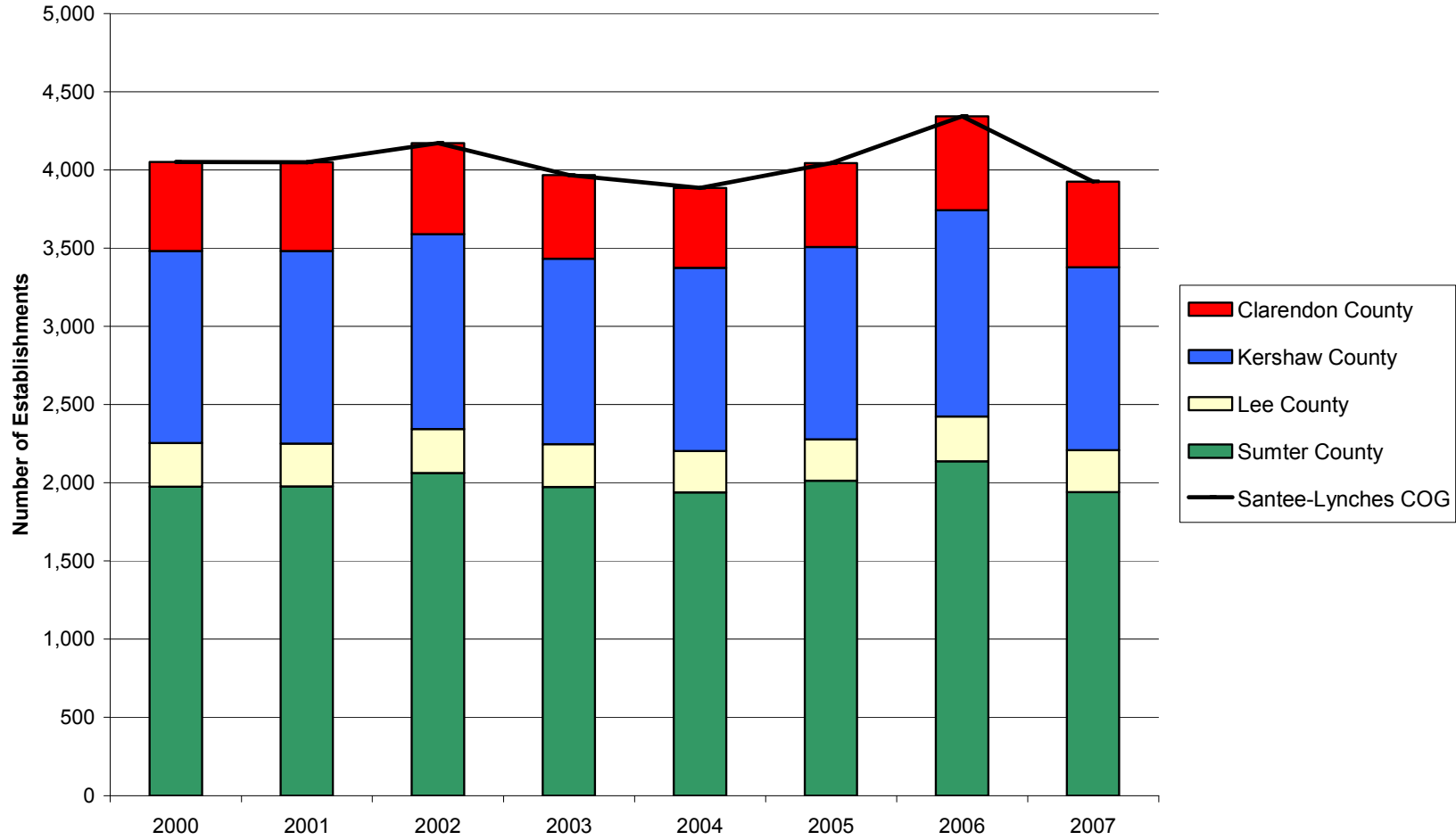
Indicator	Geographic Area	Year					Percent Change	
		2000	2004	2005	2006	2007	2000-2007	2006-2007
<b>Private Establishments</b>		<b>2000</b>	<b>2004</b>	<b>2005</b>	<b>2006</b>	<b>2007</b>	<b>2000-2007</b>	<b>2006-2007</b>
	Clarendon County	570	511	536	601	549	-3.7%	-8.7%
	Kershaw County	1,226	1,171	1,229	1,318	1,168	-4.7%	-11.4%
	Lee County	280	265	264	286	269	-3.9%	-5.9%
	Sumter County	1,975	1,938	2,014	2,138	1,940	-1.8%	-9.3%
	<b>Santee-Lynches COG</b>	4,051	3,885	4,043	4,343	3,926	-3.1%	-9.6%
	<b>South Carolina</b>	110,221	108,929	115,194	125,222	113,254	2.8%	-9.6%
	<b>United States</b>	7,646,318	8,093,142	8,294,662	8,505,496	8,680,218	13.5%	2.1%
<b>Employment</b>		<b>2000</b>	<b>2004</b>	<b>2005</b>	<b>2006</b>	<b>2007</b>	<b>2000-2007</b>	<b>2006-2007</b>
	Clarendon County	5,701	5,531	5,396	5,498	5,566	-2.4%	1.2%
	Kershaw County	14,588	15,004	14,427	14,511	14,682	0.6%	1.2%
	Lee County	2,580	2,626	2,543	2,475	2,492	-3.4%	0.7%
	Sumter County	34,489	31,705	31,716	30,913	30,778	-10.8%	-0.4%
	<b>Santee-Lynches COG</b>	57,358	54,866	54,082	53,397	53,518	-6.7%	0.2%
	<b>South Carolina</b>	1,507,621	1,476,668	1,500,676	1,534,903	1,563,381	3.7%	1.9%
	<b>United States</b>	110,023,983	108,490,066	110,611,016	112,718,858	114,014,680	3.6%	1.1%
<b>Manufacturing Employment</b>		<b>2000</b>	<b>2004</b>	<b>2005</b>	<b>2006</b>	<b>2007</b>	<b>2000-2007</b>	<b>2006-2007</b>
	Clarendon County	1,578	1,267	1,155	1,074	967	-38.7%	-10.0%
	Kershaw County	4,921	4,277	4,046	3,885	3,956	-19.6%	1.8%
	Lee County	425	380	432	412	419	-1.4%	1.7%
	Sumter County	12,527	9,857	9,138	8,440	7,902	-36.9%	-6.4%
	<b>Santee-Lynches COG</b>	19,451	15,781	14,771	13,811	13,244	-31.9%	-4.1%
	<b>South Carolina</b>	335,118	267,426	262,714	253,811	249,647	-25.5%	-1.6%
	<b>United States</b>	17,314,423	14,257,380	14,190,394	14,110,663	13,834,745	-20.1%	-2.0%

<b>Unemployment</b>	<b>2000</b>	<b>2004</b>	<b>2005</b>	<b>2006</b>	<b>2007</b>	<b>2000-2007</b>	<b>2006-2007</b>
Clarendon County	691	1,128	1,236	1,180	1,117	61.6%	-5.3%
Kershaw County	996	1,742	1,903	1,858	1,672	67.9%	-10.0%
Lee County	460	716	787	793	708	53.9%	-10.7%
Sumter County	1,877	3,568	3,951	3,531	3,309	76.3%	-6.3%
<b>Santee-Lynches COG</b>	4,024	7,154	7,877	7,615	6,806	69.1%	-10.6%
<b>South Carolina</b>	70,821	138,938	139,693	134,523	125,262	76.9%	-6.9%
<b>United States</b>	5,692,000	8,149,000	7,591,000	7,001,000	7,078,000	24.3%	1.1%

<b>Unemployment Rate</b>	<b>2000</b>	<b>2004</b>	<b>2005</b>	<b>2006</b>	<b>2007</b>	<b>Rate Change</b>	
						<b>2000-2007</b>	<b>2006-2007</b>
Clarendon County	5.3	8.9	9.7	9.1	8.7	3.4	-0.4
Kershaw County	3.7	6.2	6.5	6.3	5.6	1.9	-0.7
Lee County	5.6	8.7	9.4	9.4	8.6	3.0	-0.8
Sumter County	4.2	7.8	8.5	7.7	7.3	3.1	-0.4
<b>Santee-Lynches COG</b>	4.3	7.5	8.1	7.8	7.0	2.7	-0.7
<b>South Carolina</b>	3.6	6.8	6.7	6.4	5.9	2.3	-0.5
<b>United States</b>	4.0	5.5	5.1	4.6	4.6	0.6	0.0

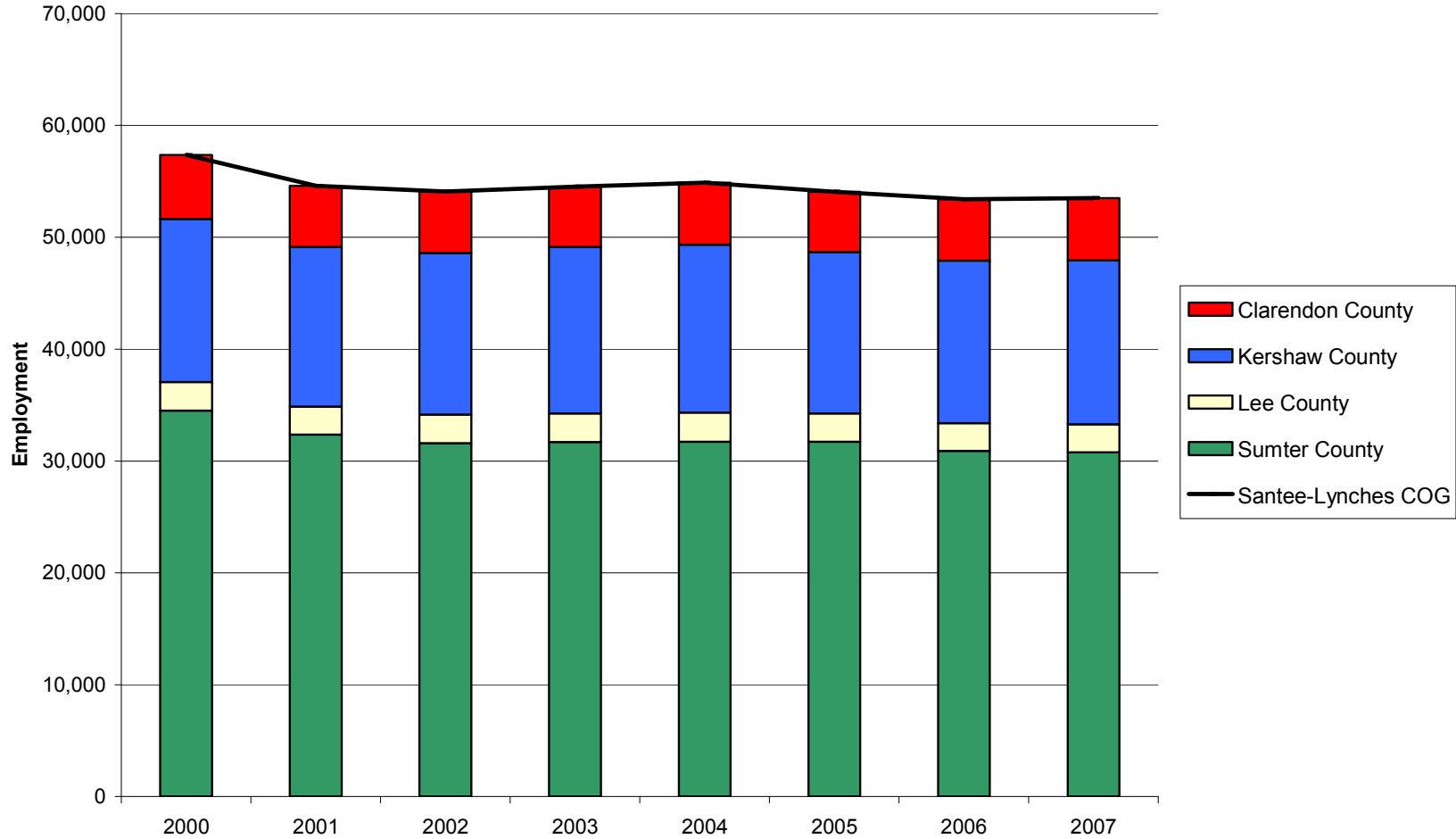
### Private Establishments in the Santee-Lynches COG Region and Component Counties, 2000-2007

Source: Quarterly Census of Employment and Wages (2000-2007). U.S. Department of Labor, Bureau of Labor Statistics



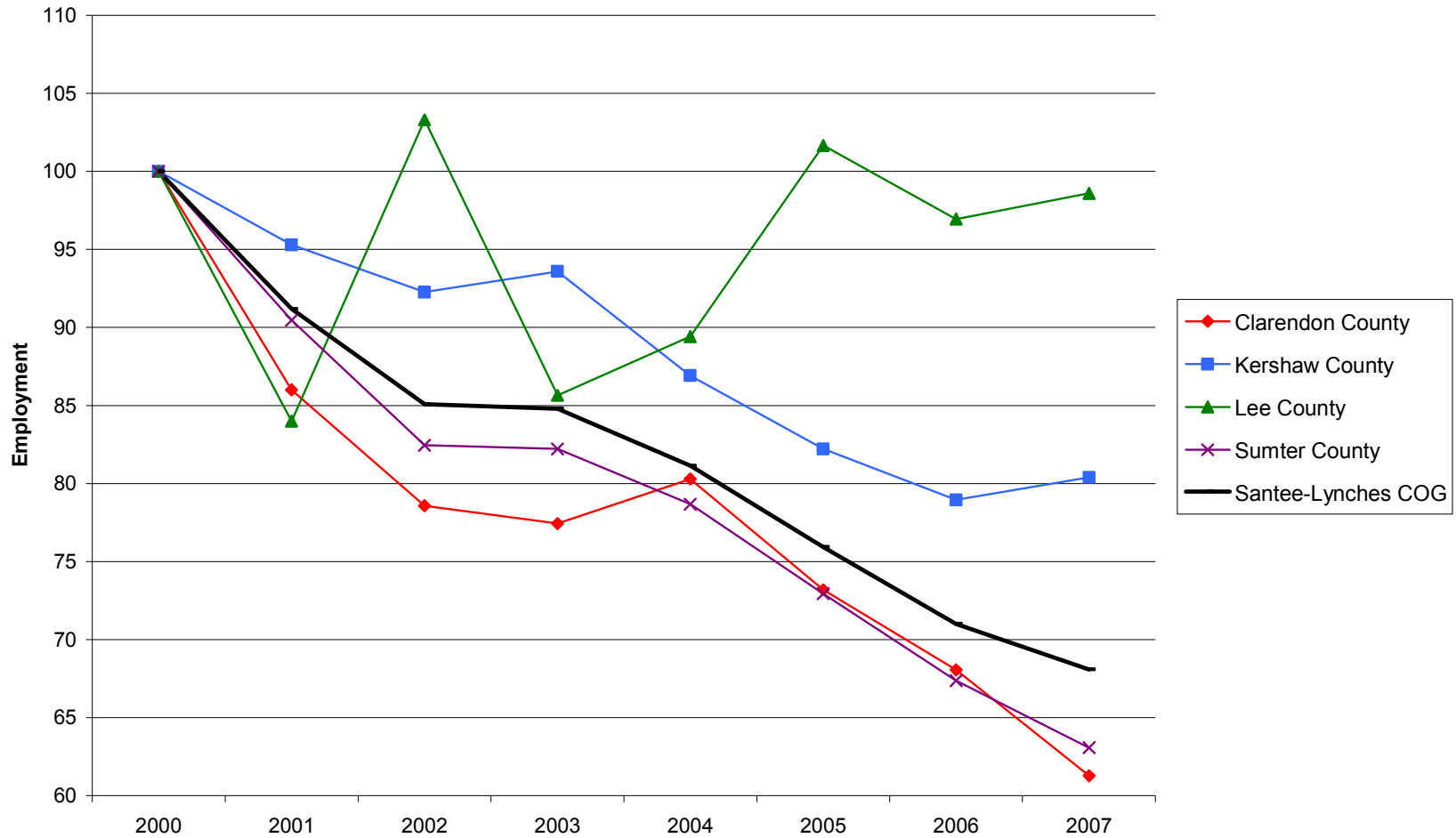
## Private Employment in the Santee-Lynches COG Region and Component Counties, 2000-2007

Source: Quarterly Census of Employment and Wages (2000-2007). U.S. Department of Labor, Bureau of Labor Statistics



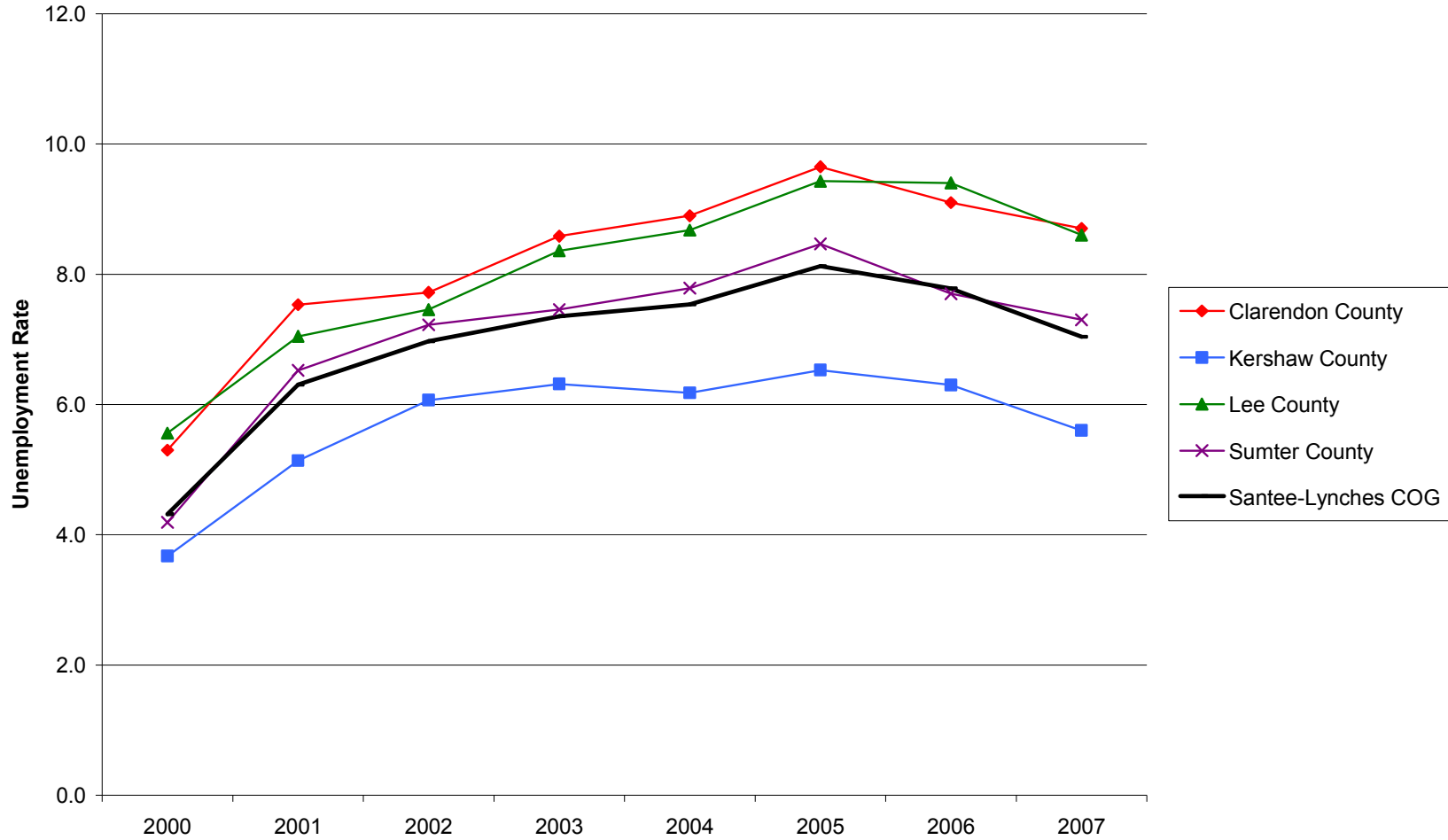
## Manufacturing Employment Trends in the Santee-Lynches COG Region and Component Counties, 2000-2007

Source: Quarterly Census of Employment and Wages (2000-2007). U.S. Department of Labor, Bureau of Labor Statistics



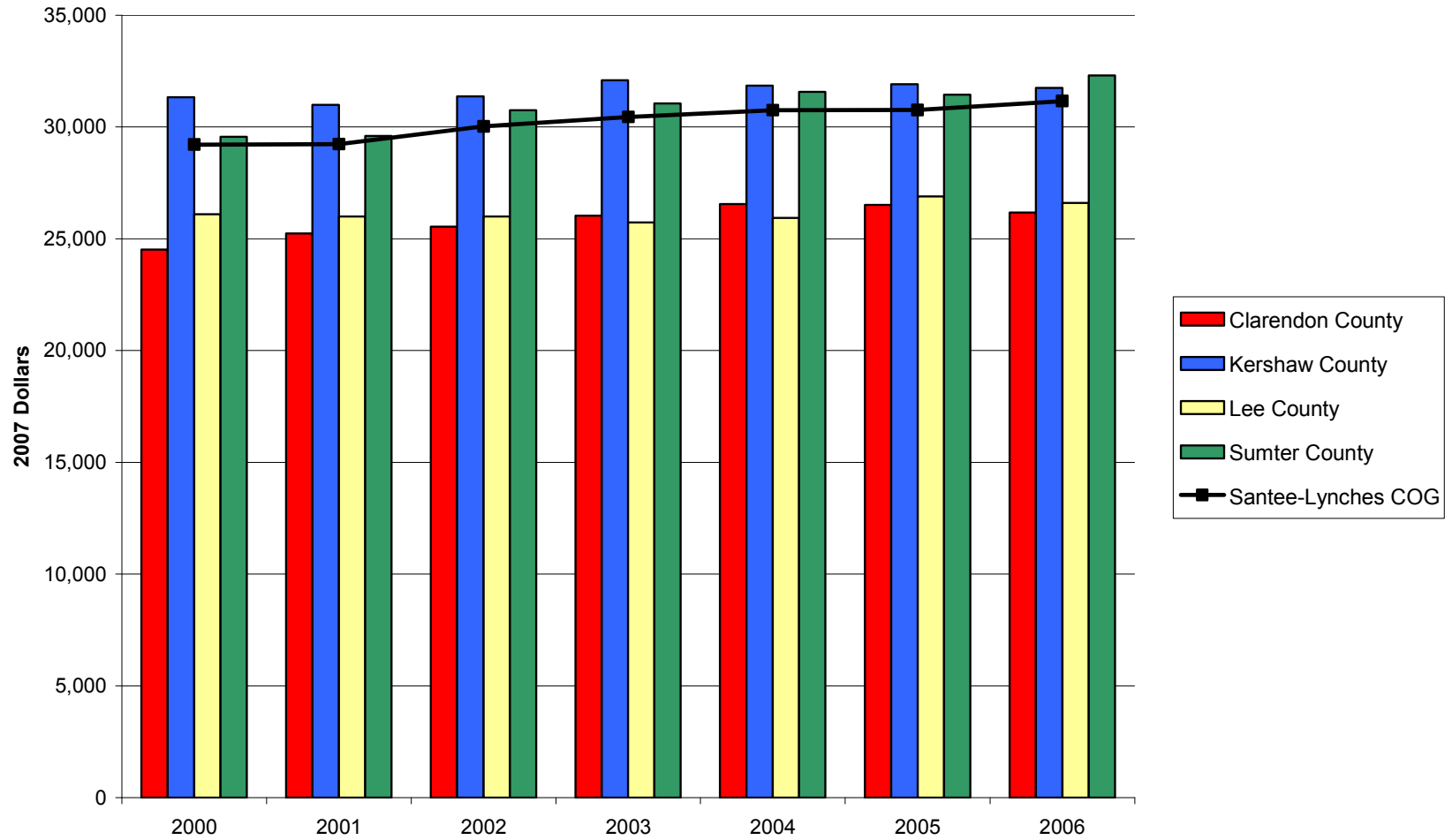
## Unemployment Rates in the Santee-Lynches COG Region and Component Counties, 2000-2007

Source: Local Area Unemployment Statistics. U.S. Department of Labor. Bureau of Labor Statistics



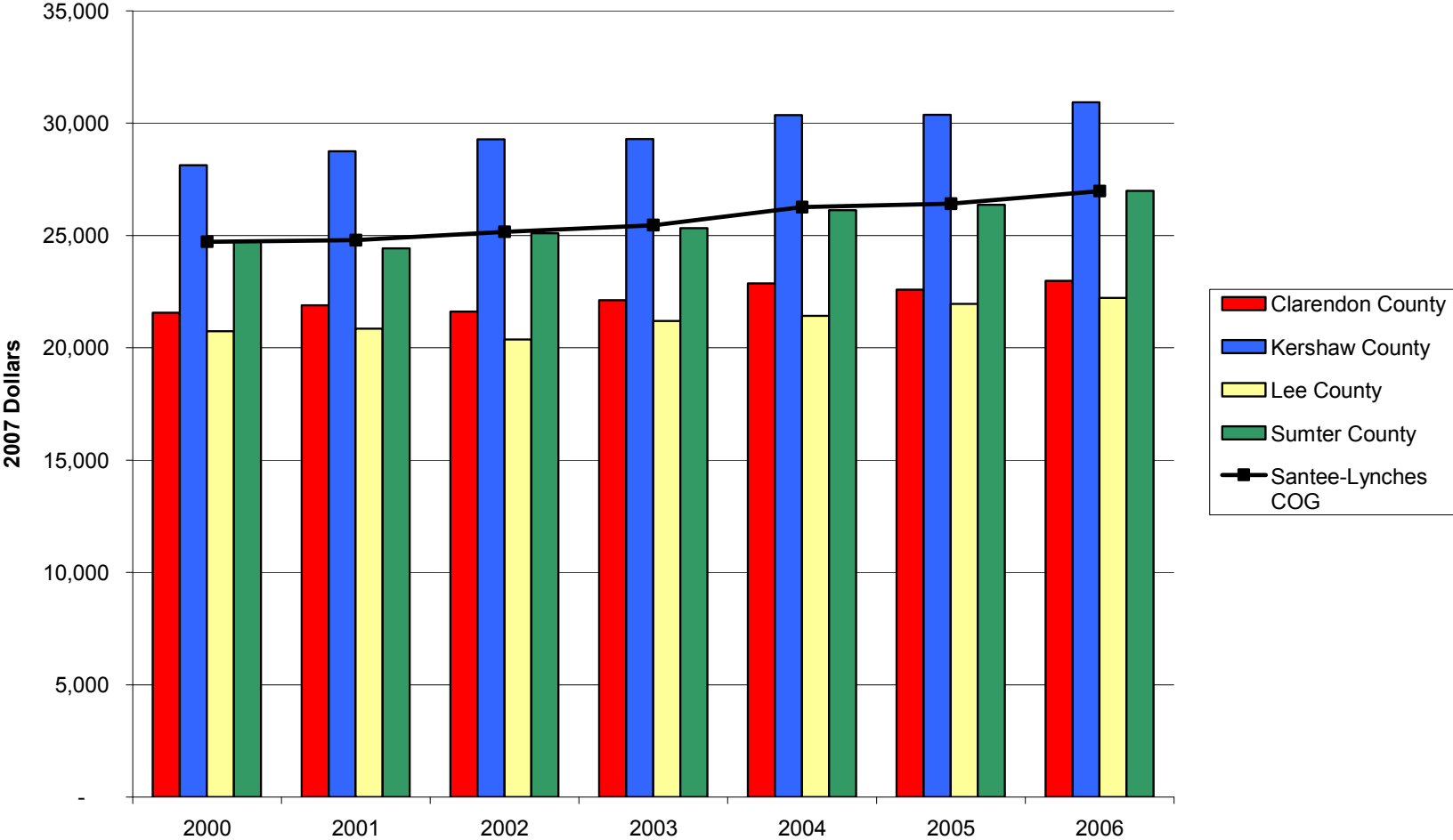
### Earnings per Worker in the Santee-Lynches COG Region and Component Counties, 2000-2006

Source: Bureau of Economic Analysis, Regional Economic Information System (REIS): Table CA30



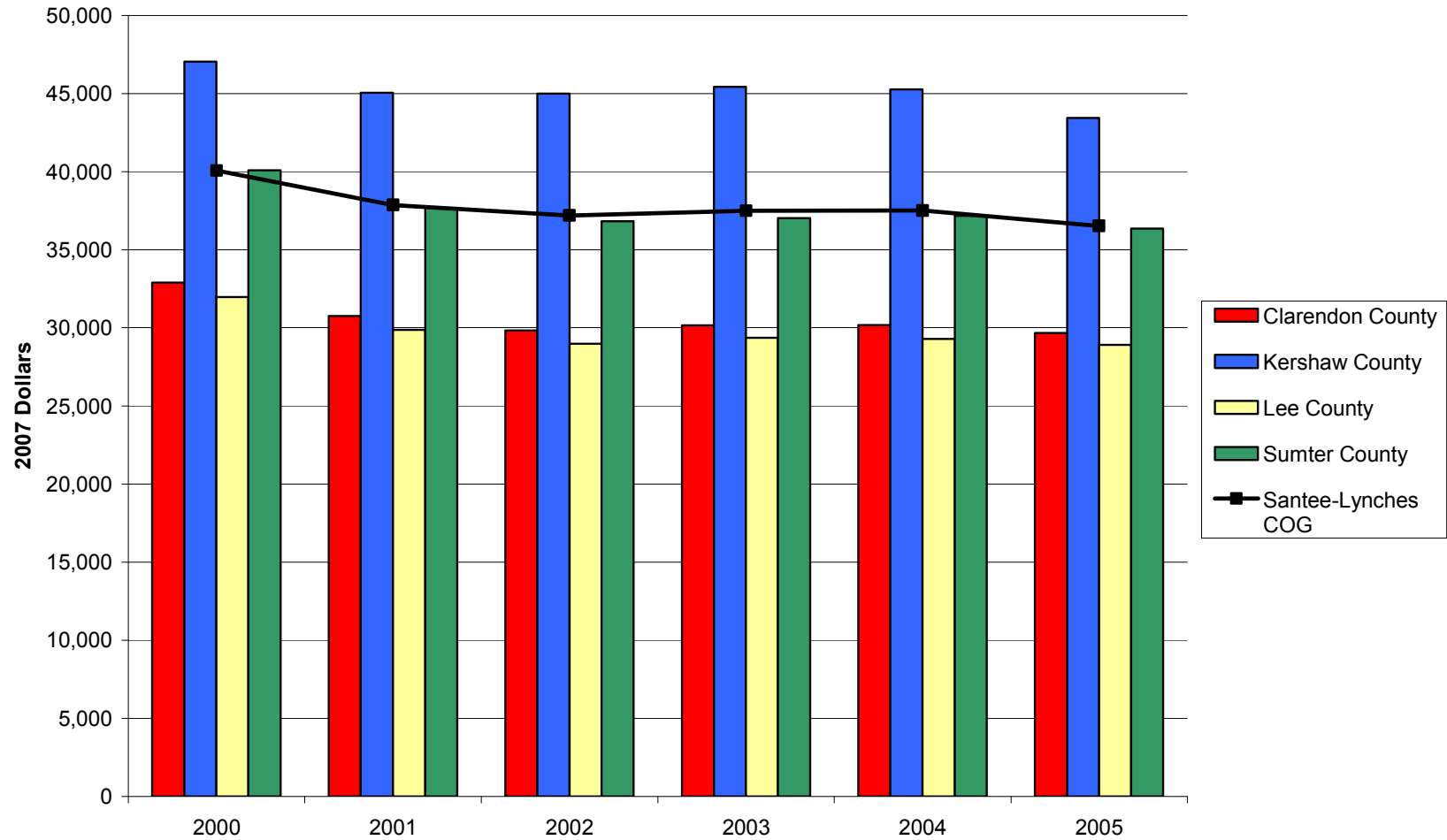
### Per Capita Income in the Santee-Lynches COG Region and Component Counties, 2000-2006

Source: Bureau of Economic Analysis, Regional Economic Information System (REIS): Table CA31-3



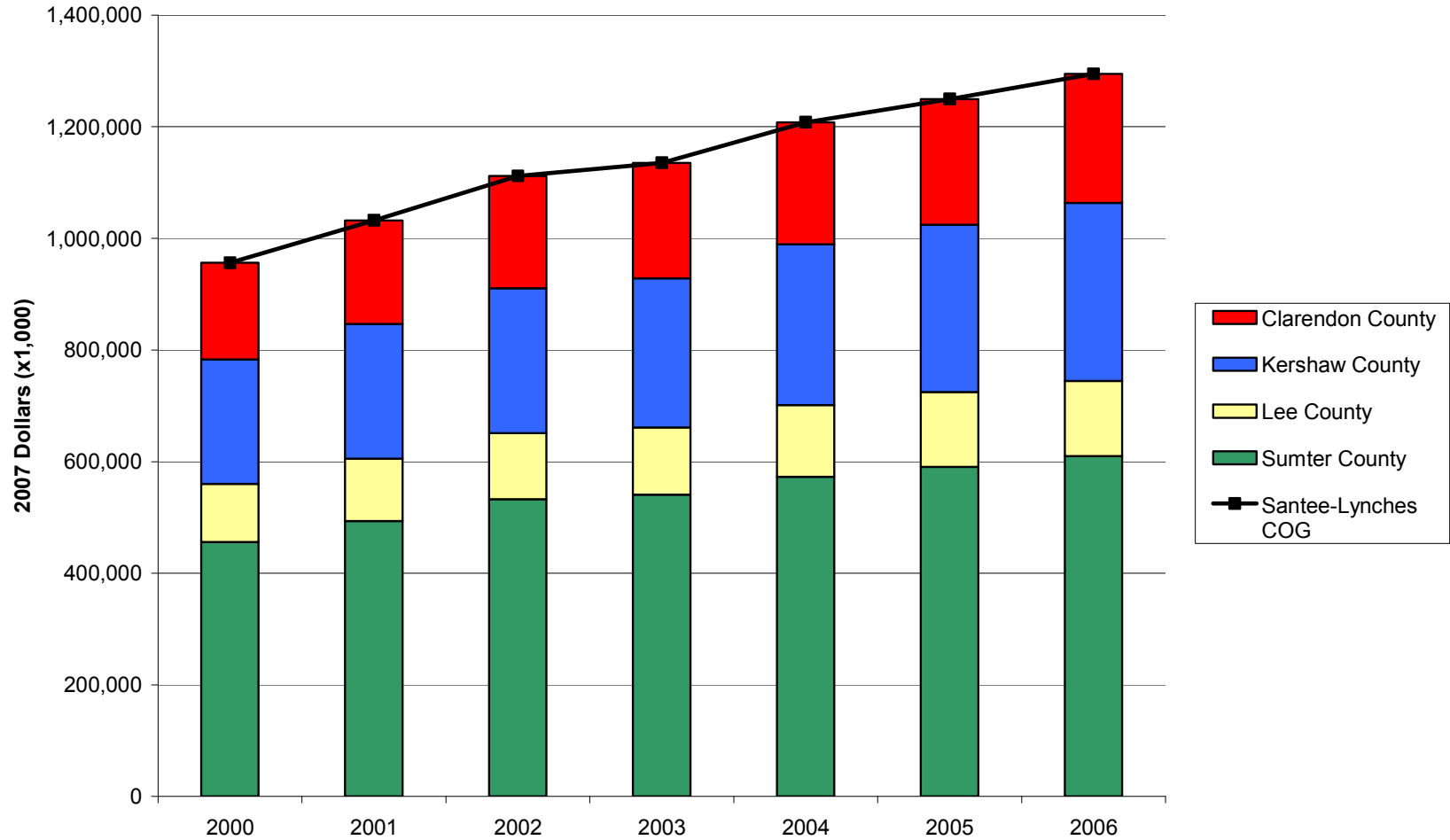
## Median Household Income in the Santee-Lynches COG Region and Component Counties, 2000-2005

Source: U.S. Census Bureau, Small Area Income and Poverty Estimates



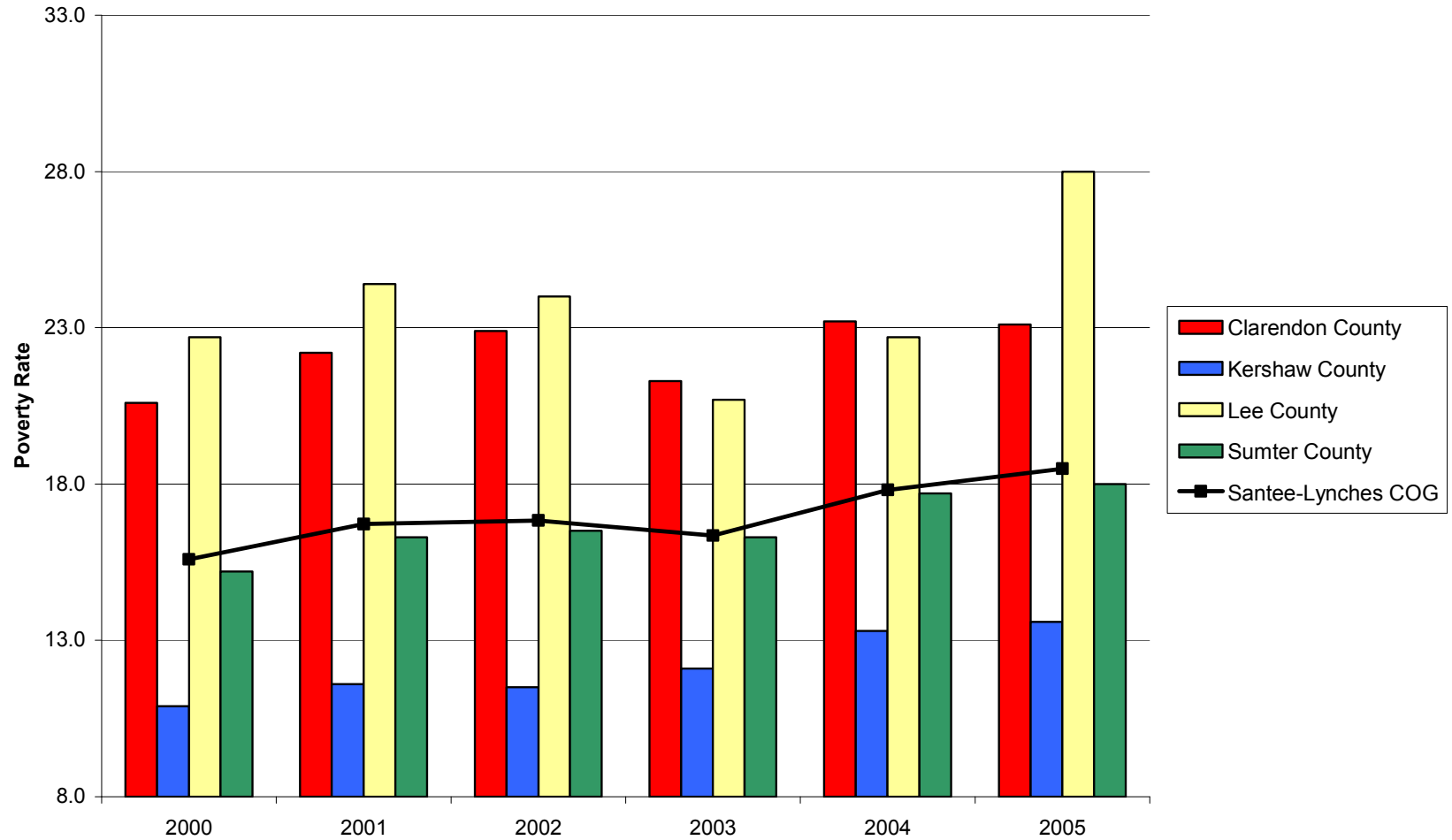
### Transfer Payments in the Santee-Lynches COG Region and Component Counties, 2000-2006

Source: Bureau of Economic Analysis, Regional Economic Information System (REIS): Table CA35



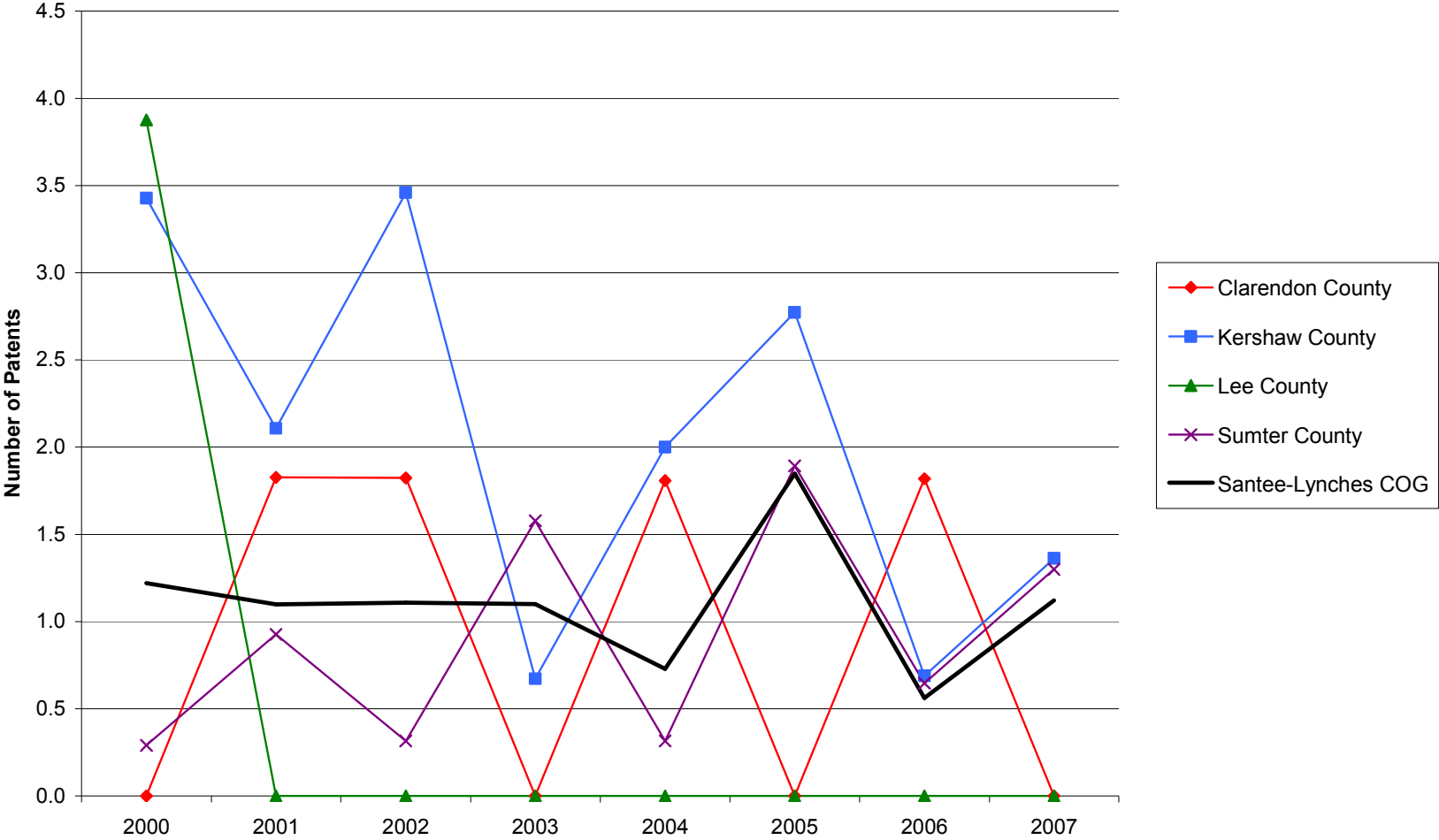
## Poverty Rates in the Santee-Lynches COG Region and Component Counties, 2000-2005

Source: U.S. Census Bureau, Small Area Income and Poverty Estimates



# Patents per 10,000 Employees in the Santee-Lynches COG Region and Component Counties, 2000-2007

Source: United States Patent and Trademark Office, Patent Electronic Business Center



### SBIR/STTR Phase I and II Awards per 1,000 Employees in the Santee-Lynches COG Region and Component Counties, 2000-2006

Source: U.S. Small Business Administration, Technology Resources Network

