

A. Economic Indicators: Establishments and Employment, Upper Savannah COG

Indicator	Geographic Area	Year					Percent Change	
Private Establishments		2000	2004	2005	2006	2007	2000-2007	2006-2007
	Abbeville County	333	338	354	372	335	0.6%	-9.9%
	Edgefield County	364	338	346	377	312	-14.3%	-17.2%
	Greenwood County	1,558	1,457	1,486	1,544	1,438	-7.7%	-6.9%
	Laurens County	912	839	856	893	829	-9.1%	-7.2%
	McCormick County	134	113	117	130	122	-9.0%	-6.2%
	Saluda County	275	266	276	293	256	-6.9%	-12.6%
	Upper Savannah COG	3,576	3,351	3,435	3,609	3,292	-7.9%	-8.8%
	South Carolina	110,221	108,929	115,194	125,222	113,254	2.8%	-9.6%
	United States	7,646,318	8,093,142	8,294,662	8,505,496	8,680,218	13.5%	2.1%
Employment		2000	2004	2005	2006	2007	2000-2007	2006-2007
	Abbeville County	6,165	5,258	5,429	5,171	4,829	-21.7%	-6.6%
	Edgefield County	4,721	5,090	4,699	4,438	4,450	-5.7%	0.3%
	Greenwood County	25,973	23,446	23,234	22,975	22,662	-12.7%	-1.4%
	Laurens County	16,065	13,719	14,486	14,524	14,631	-8.9%	0.7%
	McCormick County	1,252	1,002	1,044	1,090	1,125	-10.1%	3.2%
	Saluda County	3,752	3,452	3,491	3,620	3,446	-8.2%	-4.8%
	Upper Savannah COG	57,928	51,967	52,383	51,818	51,143	-11.7%	-1.3%
	South Carolina	1,507,621	1,476,668	1,500,676	1,534,903	1,563,381	3.7%	1.9%
	United States	110,023,983	108,490,066	110,611,016	112,718,858	114,014,680	3.6%	1.1%
Manufacturing Employment		2000	2004	2005	2006	2007	2000-2007	2006-2007
	Abbeville County	3,527	2,655	2,617	2,400	2,137	-39.4%	-11.0%
	Edgefield County	1,881	1,388	1,247	1,221	1,305	-30.6%	6.9%
	Greenwood County	10,631	8,258	7,730	7,505	6,988	-34.3%	-6.9%
	Laurens County	6,489	4,047	4,453	4,414	4,719	-27.3%	6.9%

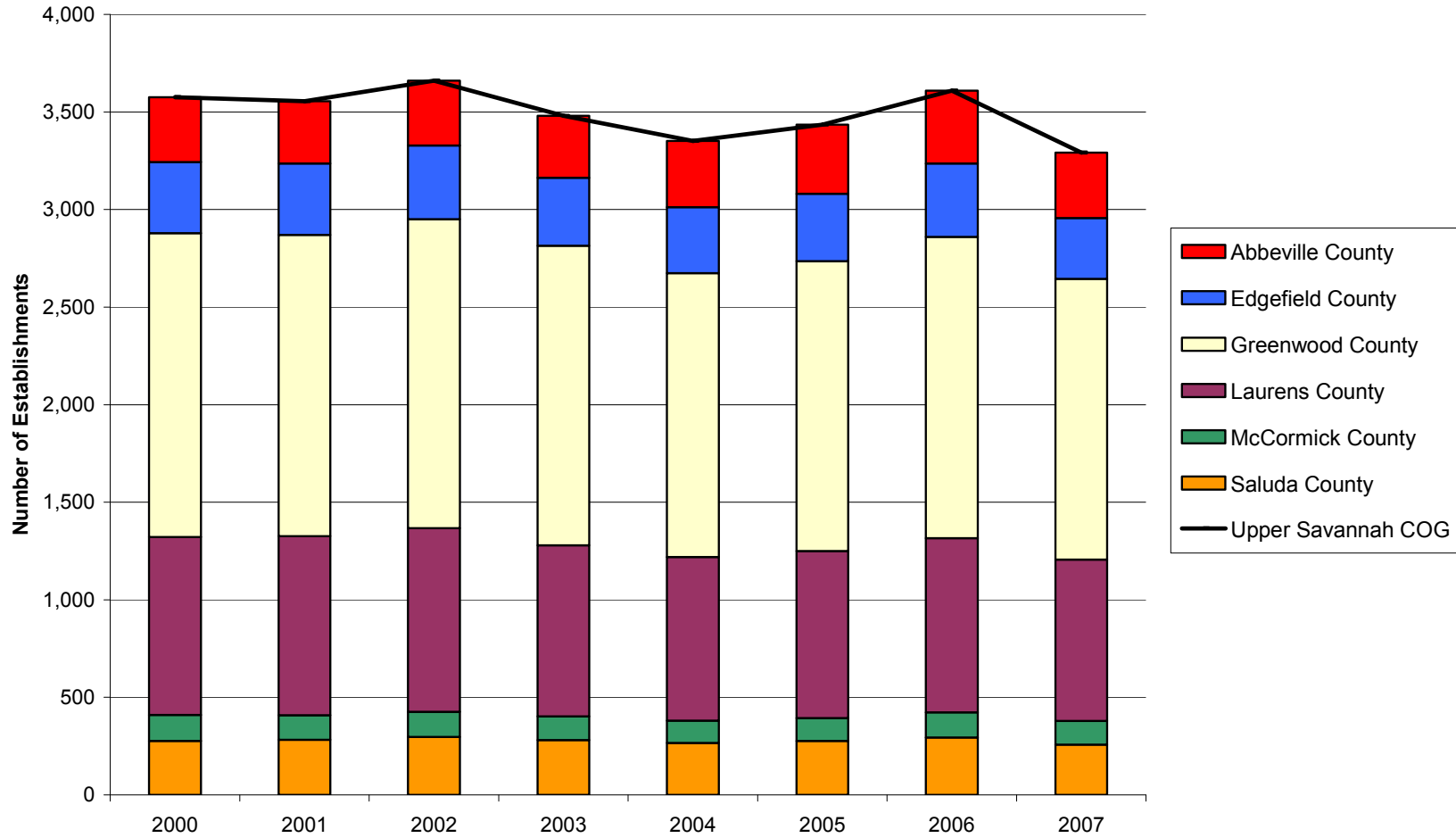
McCormick County	407	281	254	308	277	-31.9%	-10.1%
Saluda County	1,926	1,627	1,696	1,754	1,747	-9.3%	-0.4%
Upper Savannah COG	24,861	18,256	17,997	17,602	17,173	-30.9%	-2.4%
South Carolina	335,118	267,426	262,714	253,811	249,647	-25.5%	-1.6%
United States	17,314,423	14,257,380	14,190,394	14,110,663	13,834,745	-20.1%	-2.0%

Unemployment	2000	2004	2005	2006	2007	2000-2007	2006-2007
Abbeville County	456	977	933	1,050	986	116.2%	-6.1%
Edgefield County	370	638	800	843	709	91.6%	-15.9%
Greenwood County	1,370	2,824	2,950	2,498	2,250	64.2%	-9.9%
Laurens County	1,096	2,354	2,225	2,296	2,521	130.0%	9.8%
McCormick County	233	385	397	392	367	57.5%	-6.4%
Saluda County	336	686	617	580	510	51.8%	-12.1%
Upper Savannah COG	3,861	7,864	7,922	7,903	7,343	90.2%	-7.1%
South Carolina	70,821	138,938	139,693	134,523	125,262	76.9%	-6.9%
United States	5,692,000	8,149,000	7,591,000	7,001,000	7,078,000	24.3%	1.1%

Unemployment Rate	2000	2004	2005	2006	2007	Rate Change	
						2000-2007	2006-2007
Abbeville County	3.7	8.2	7.7	8.7	8.5	4.8	-0.2
Edgefield County	3.6	5.8	7.1	7.6	6.4	2.8	-1.2
Greenwood County	4.2	8.7	9.0	7.8	7.2	3.0	-0.6
Laurens County	3.2	7.1	6.7	6.8	7.3	4.1	0.5
McCormick County	6.2	11.1	11.1	10.8	10.3	4.1	-0.5
Saluda County	3.6	7.4	6.6	6.2	5.4	1.8	-0.8
Upper Savannah COG	3.8	7.8	7.7	7.7	7.2	3.5	-0.4
South Carolina	3.6	6.8	6.7	6.4	5.9	2.3	-0.5
United States	4.0	5.5	5.1	4.6	4.6	0.6	0.0

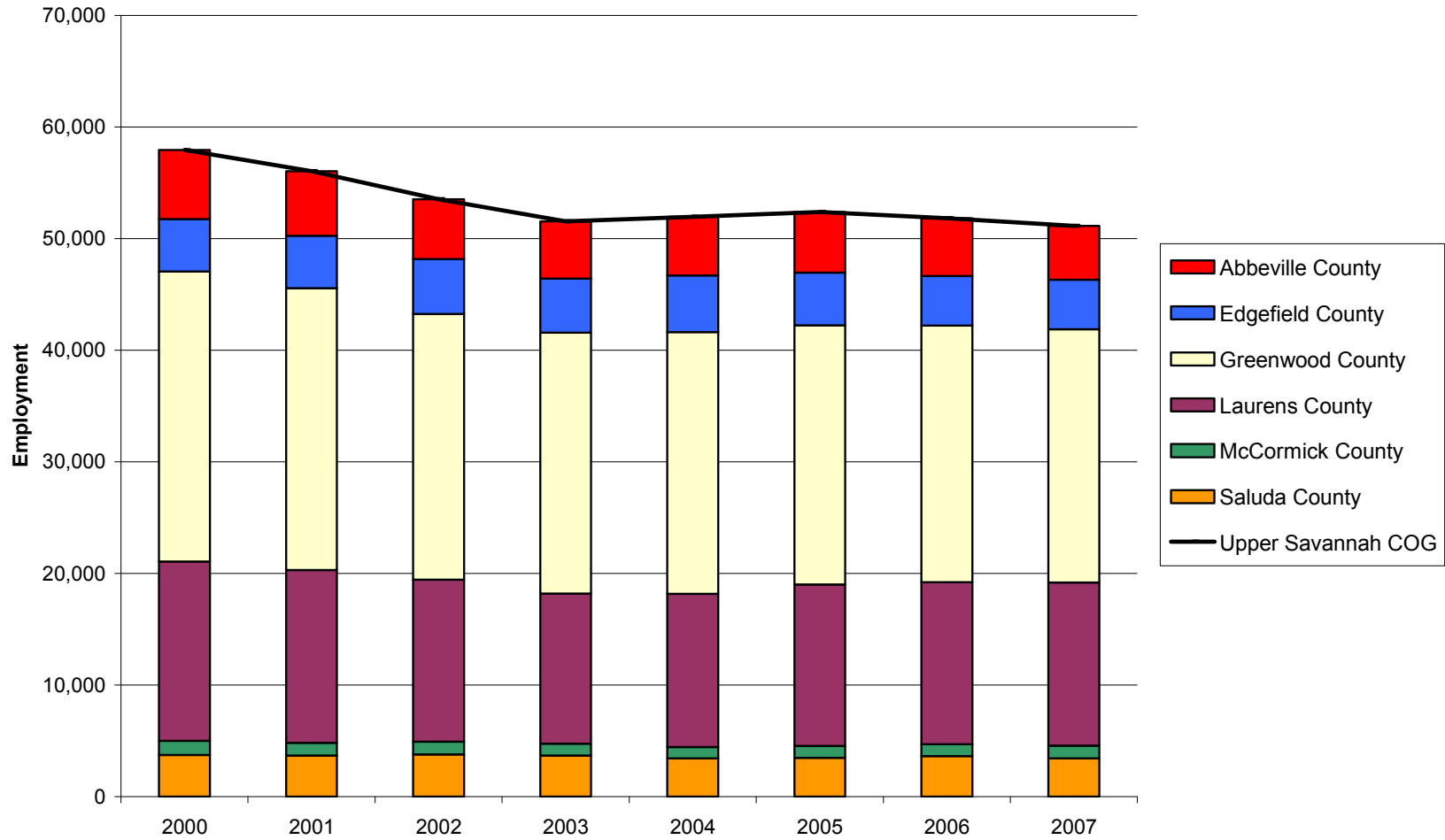
Private Establishments in the Upper Savannah COG Region and Component Counties, 2000-2007

Source: Quarterly Census of Employment and Wages (2000-2007). U.S. Department of Labor, Bureau of Labor Statistics



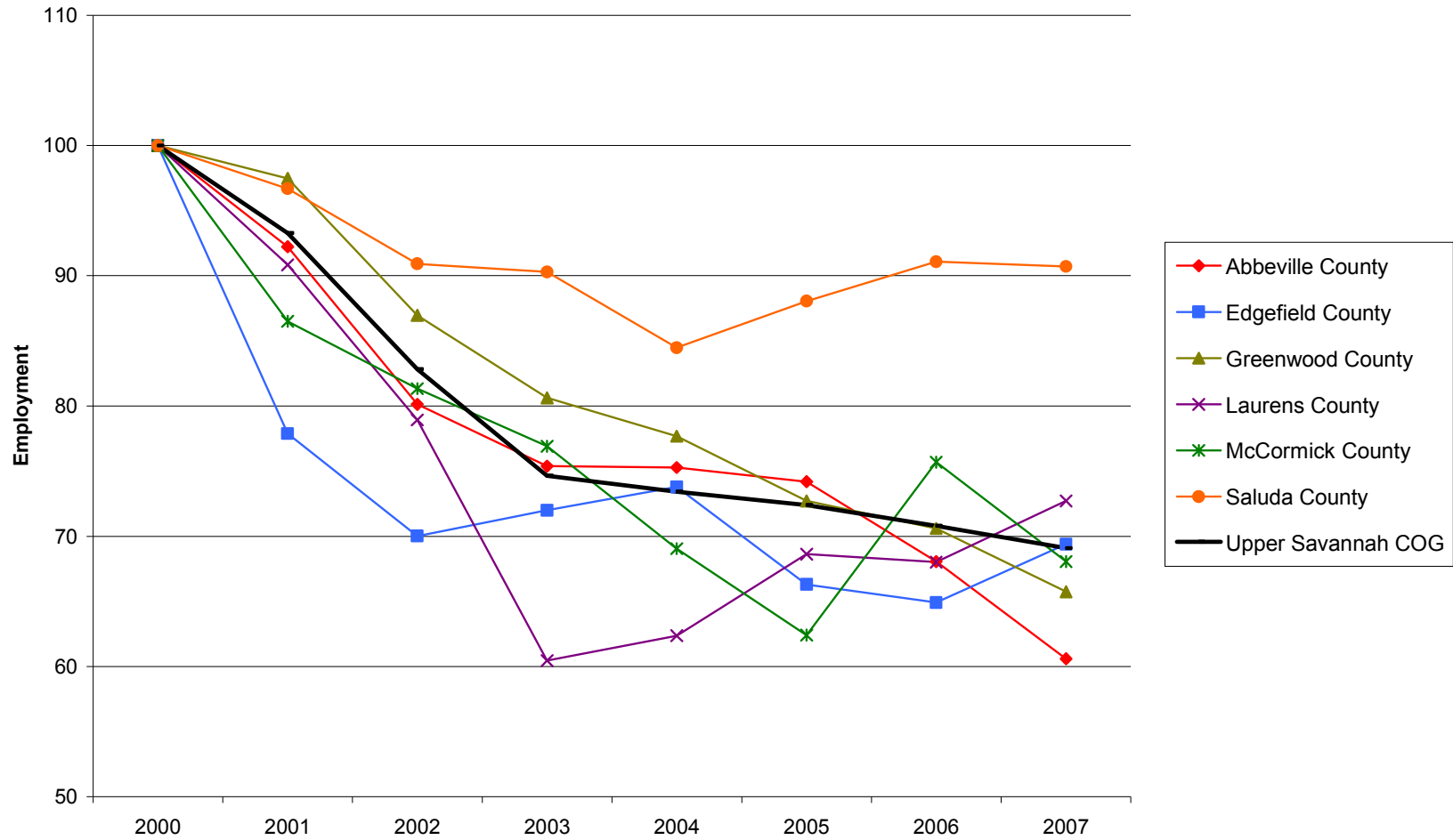
Private Employment in the Upper Savannah COG Region and Component Counties, 2000-2007

Source: Quarterly Census of Employment and Wages (2000-2007). U.S. Department of Labor, Bureau of Labor Statistics



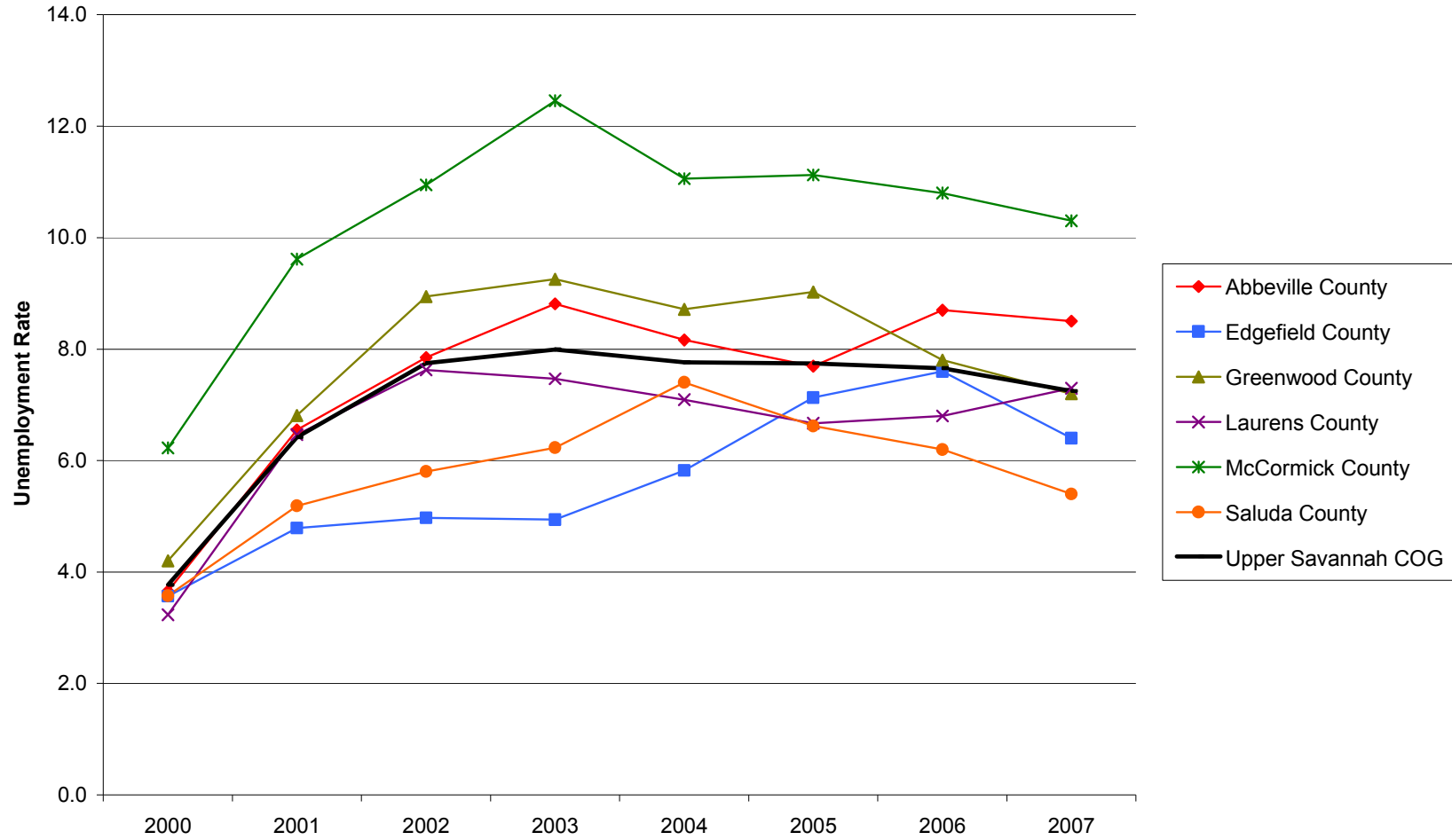
Manufacturing Employment Trends in the Upper Savannah COG Region and Component Counties, 2000-2007

Source: Quarterly Census of Employment and Wages (2000-2007). U.S. Department of Labor, Bureau of Labor Statistics



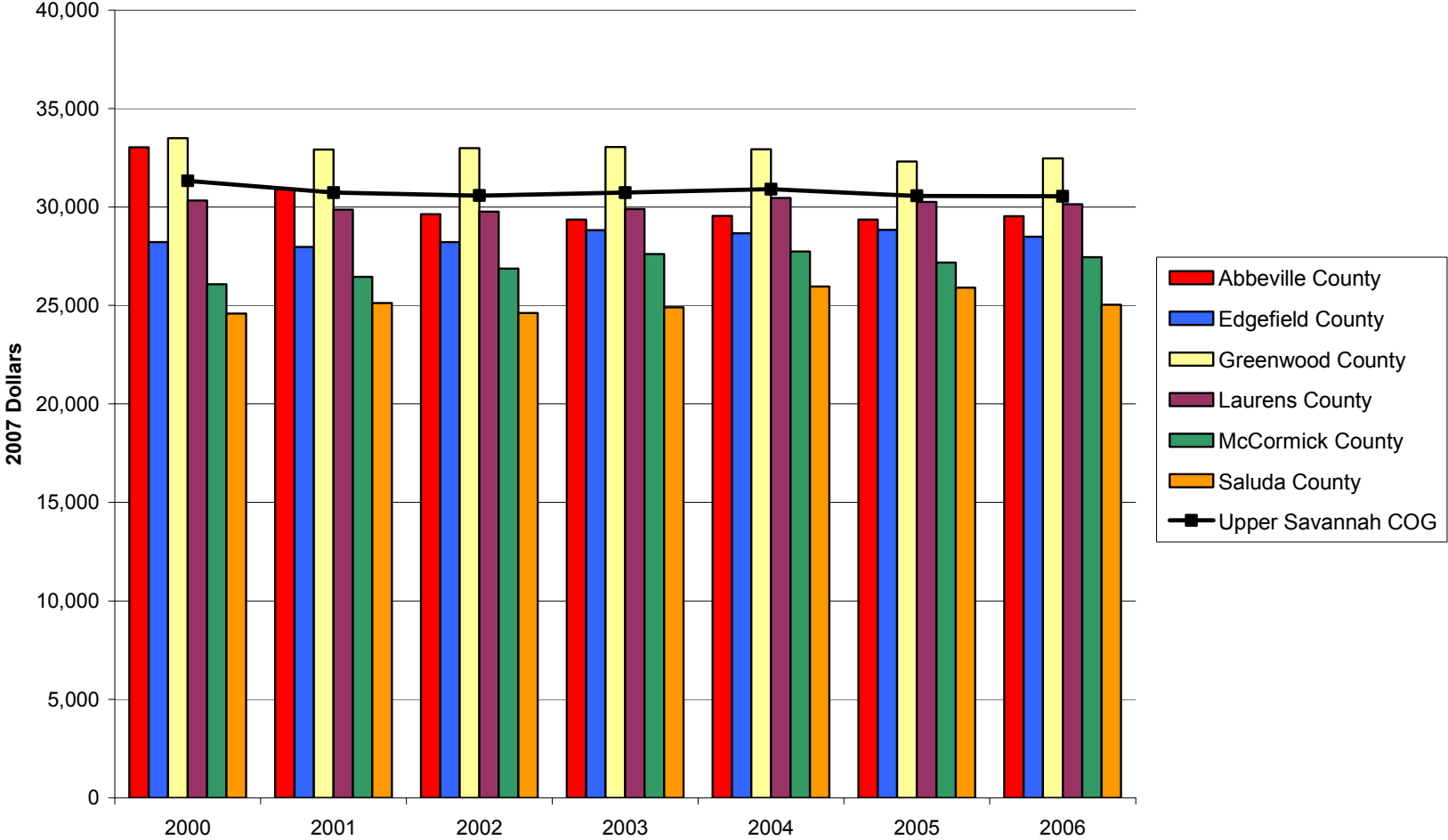
Unemployment Rates in the Upper Savannah COG Region and Component Counties, 2000-2007

Source: Local Area Unemployment Statistics. U.S. Department of Labor. Bureau of Labor Statistics



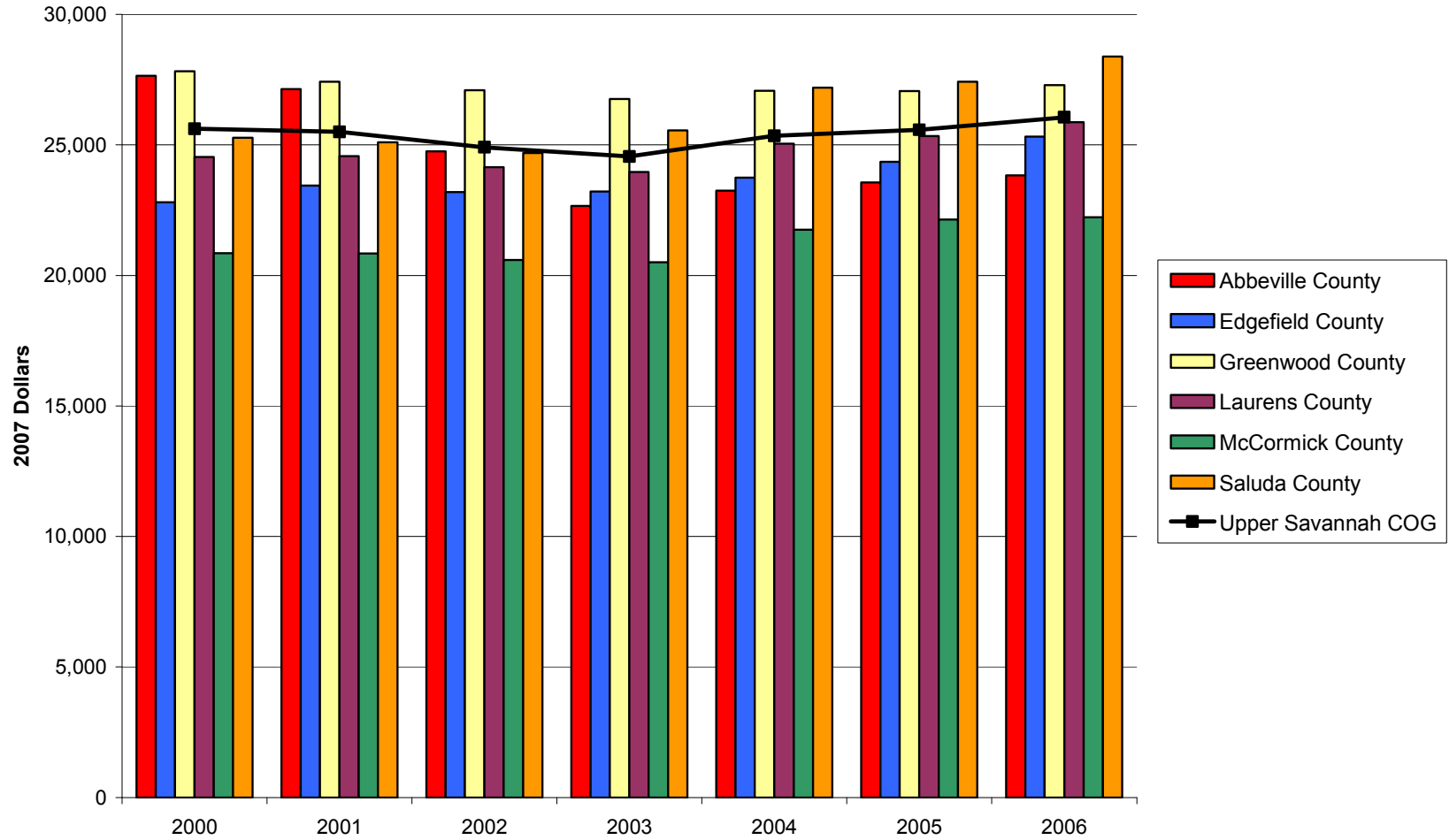
Earnings per Worker in the Upper Savannah COG Region and Component Counties, 2000-2006

Source: Bureau of Economic Analysis, Regional Economic Information System (REIS): Table CA30



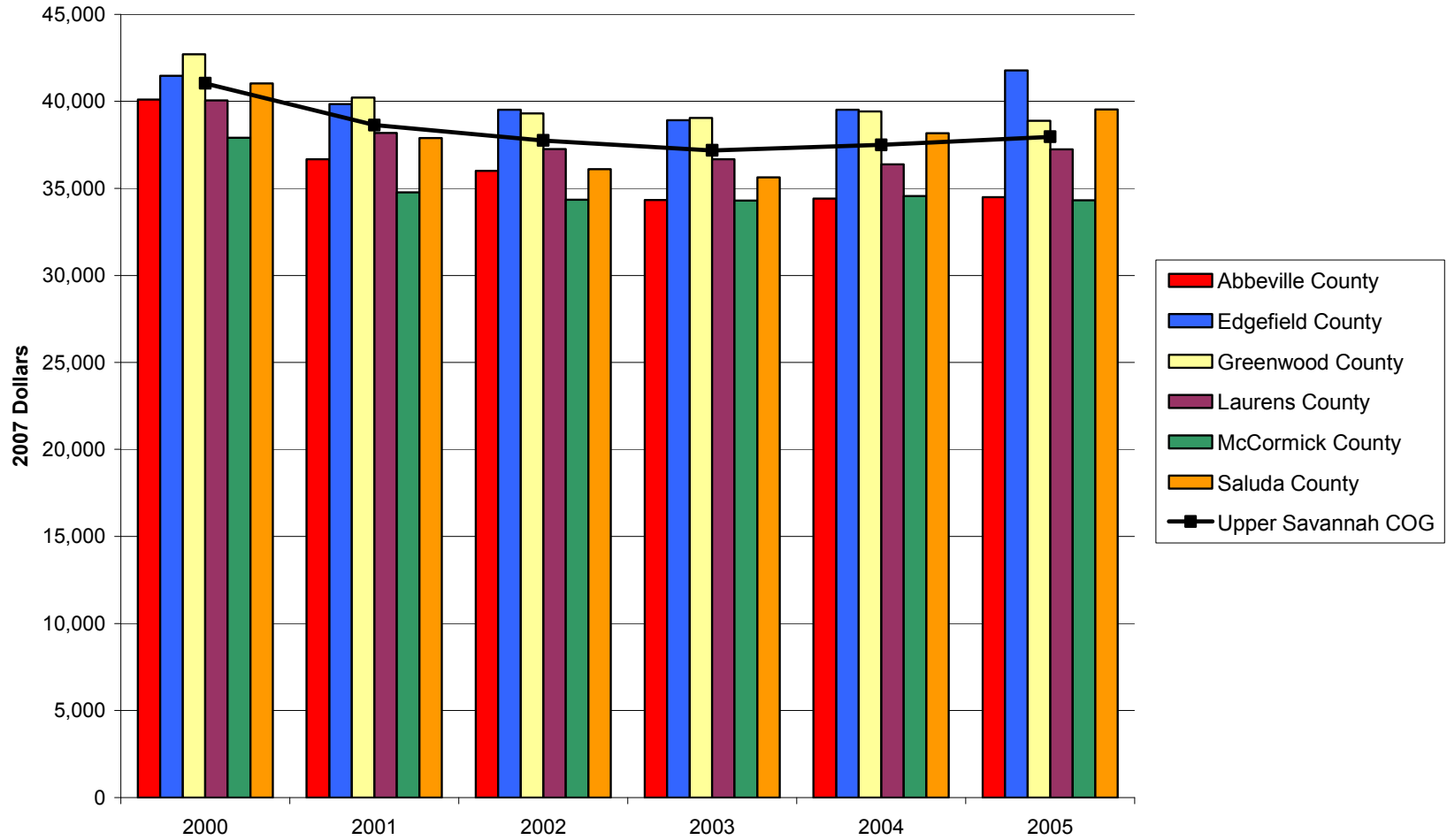
Per Capita Income in the Upper Savannah COG Region and Component Counties, 2000-2006

Source: Bureau of Economic Analysis, Regional Economic Information System (REIS): Table CA31-3



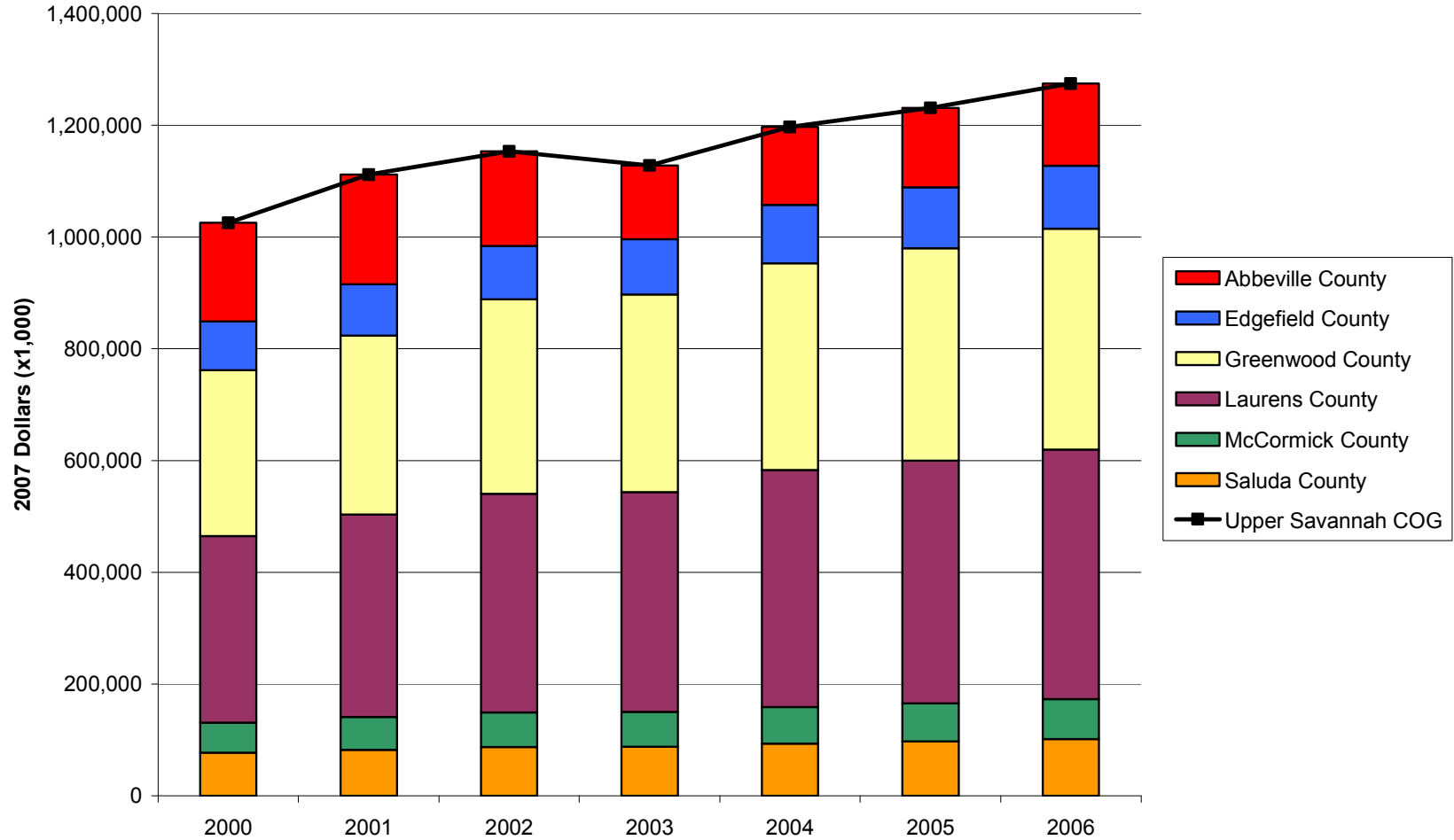
Median Household Income in the Upper Savannah COG Region and Component Counties, 2000-2005

Source: U.S. Census Bureau, Small Area Income and Poverty Estimates



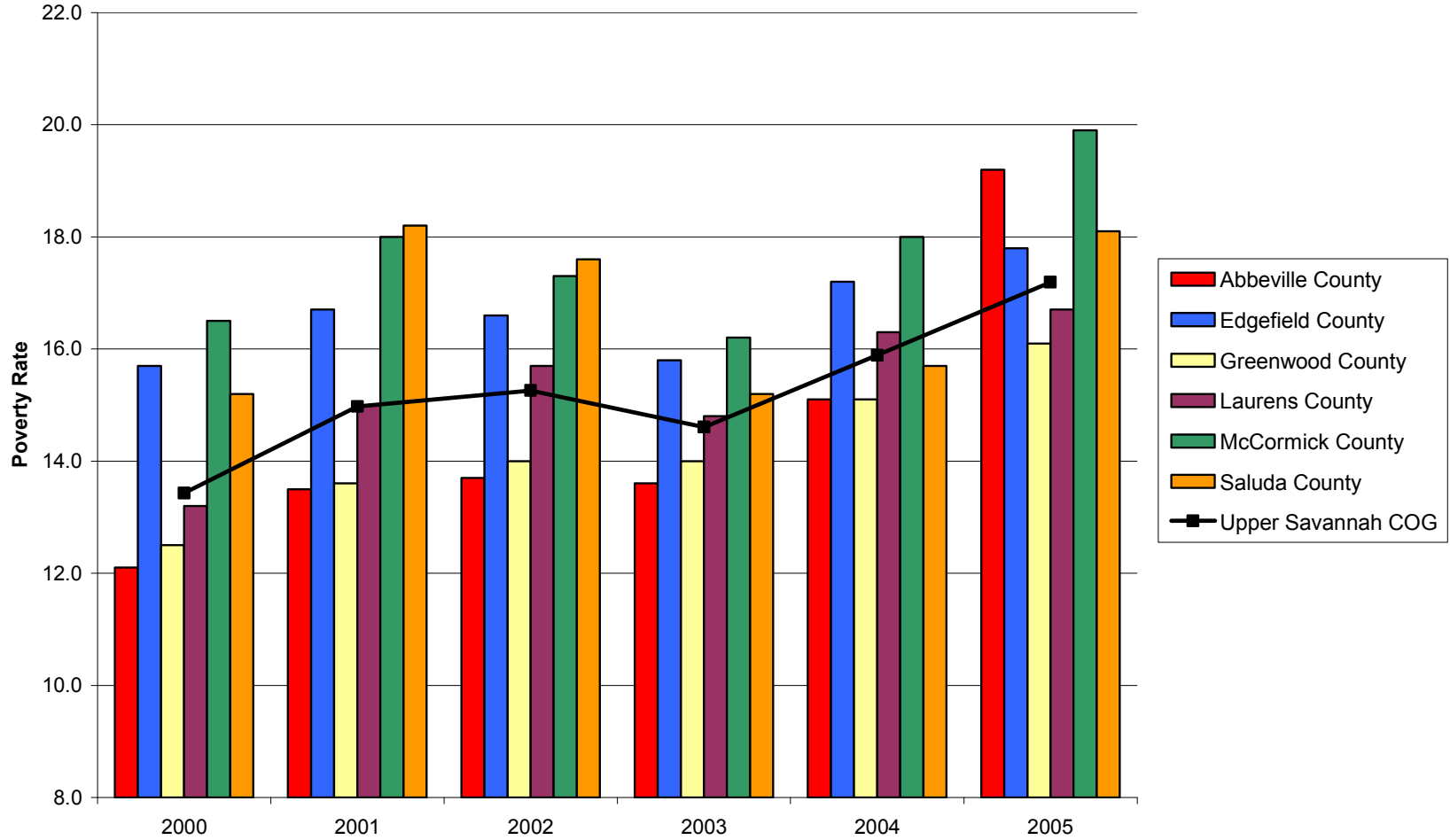
Transfer Payments in the Upper Savannah COG Region and Component Counties, 2000-2006

Source: Bureau of Economic Analysis, Regional Economic Information System (REIS): Table CA35



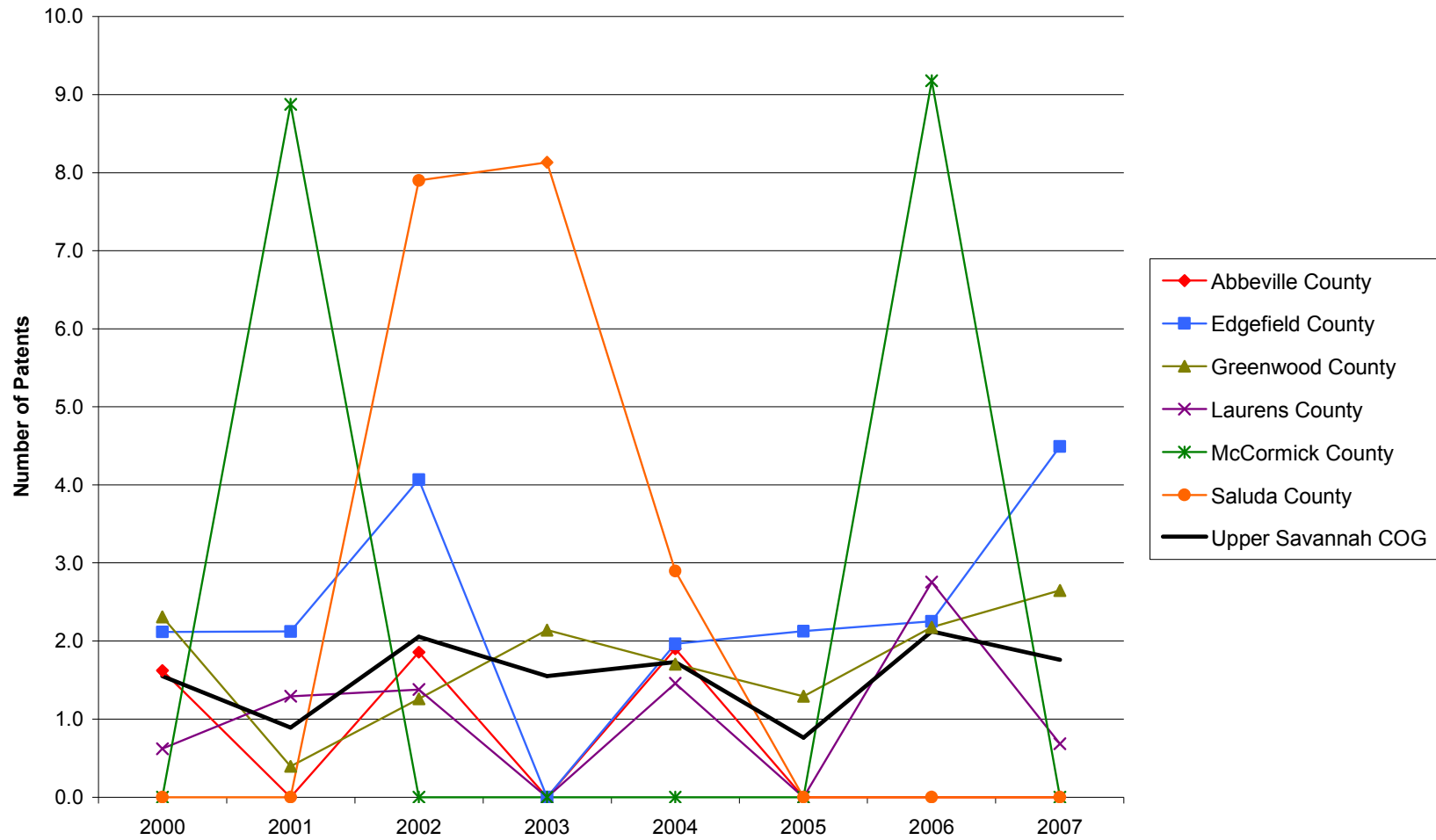
Poverty Rates in the Upper Savannah COG Region and Component Counties, 2000-2005

Source: U.S. Census Bureau, Small Area Income and Poverty Estimates



Patents per 10,000 Employees in the Upper Savannah COG Region and Component Counties, 2000-2007

Source: United States Patent and Trademark Office, Patent Electronic Business Center



SBIR/STTR Phase I and II Awards per 1,000 Employees in the Upper Savannah COG Region and Component Counties, 2000-2006

Source: U.S. Small Business Administration, Technology Resources Network

