

A. Economic Indicators: Establishments and Employment, Waccamaw COG

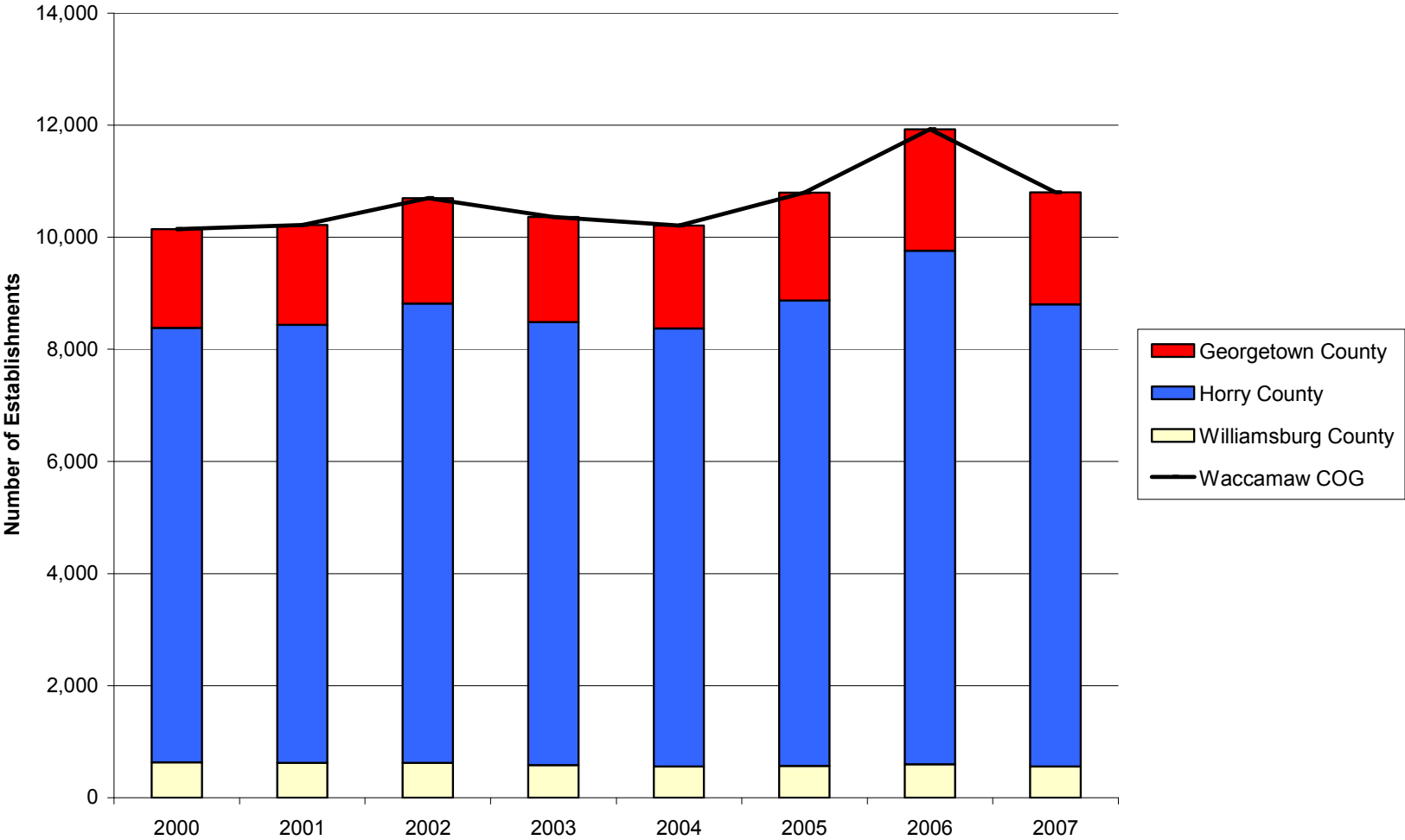
Indicator	Geographic Area	Year					Percent Change	
		2000	2004	2005	2006	2007	2000-2007	2006-2007
Private Establishments		2000	2004	2005	2006	2007	2000-2007	2006-2007
	Georgetown County	1,760	1,833	1,927	2,164	1,998	13.5%	-7.7%
	Horry County	7,755	7,820	8,301	9,167	8,250	6.4%	-10.0%
	Williamsburg County	631	556	571	595	555	-12.0%	-6.7%
	Waccamaw COG	10,146	10,209	10,799	11,926	10,803	6.5%	-9.4%
	South Carolina	110,221	108,929	115,194	125,222	113,254	2.8%	-9.6%
	United States	7,646,318	8,093,142	8,294,662	8,505,496	8,680,218	13.5%	2.1%
Employment		2000	2004	2005	2006	2007	2000-2007	2006-2007
	Georgetown County	17,256	17,520	18,226	18,897	19,204	-6.6%	2.7%
	Horry County	88,019	93,528	96,269	101,914	103,473	-2.5%	1.9%
	Williamsburg County	7,446	7,142	7,270	7,261	7,051	-33.8%	-5.7%
	Waccamaw COG	112,721	118,190	121,765	128,072	129,728	15.1%	1.3%
	South Carolina	1,507,621	1,476,668	1,500,676	1,534,903	1,563,381	3.7%	1.9%
	United States	110,023,983	108,490,066	110,611,016	112,718,858	114,014,680	3.6%	1.1%
Manufacturing Employment		2000	2004	2005	2006	2007	2000-2007	2006-2007
	Georgetown County	3,232	2,058	2,190	2,205	2,204	-31.8%	0.0%
	Horry County	6,659	4,335	4,146	4,295	4,342	-34.8%	1.1%
	Williamsburg County	3,008	2,247	2,162	2,134	2,105	-30.0%	-1.4%
	Waccamaw COG	12,899	8,640	8,498	8,634	8,651	-32.9%	0.2%
	South Carolina	335,118	267,426	262,714	253,811	249,647	-25.5%	-1.6%
	United States	17,314,423	14,257,380	14,190,394	14,110,663	13,834,745	-20.1%	-2.0%

Unemployment	2000	2004	2005	2006	2007	2000-2007	2006-2007
Georgetown County	1,373	2,658	2,481	2,072	1,903	38.6%	-8.2%
Horry County	3,733	6,891	6,998	7,010	6,729	80.3%	-4.0%
Williamsburg County	1,126	1,819	1,741	1,538	1,434	27.4%	-6.8%
Waccamaw COG	6,232	11,368	11,220	10,766	10,066	61.5%	-6.5%
South Carolina	70,821	138,938	139,693	134,523	125,262	76.9%	-6.9%
United States	5,692,000	8,149,000	7,591,000	7,001,000	7,078,000	24.3%	1.1%

Unemployment Rate	2000	2004	2005	2006	2007	Rate Change	
						2000-2007	2006-2007
Georgetown County	5.3	9.5	8.6	7.0	6.4	1.1	-0.6
Horry County	3.5	5.9	5.7	5.5	5.1	1.6	-0.4
Williamsburg County	7.4	12.0	11.1	9.8	9.2	1.8	-0.6
Waccamaw COG	4.3	7.1	6.7	6.2	5.7	1.5	-0.5
South Carolina	3.6	6.8	6.7	6.4	5.9	2.3	-0.5
United States	4.0	5.5	5.1	4.6	4.6	0.6	0.0

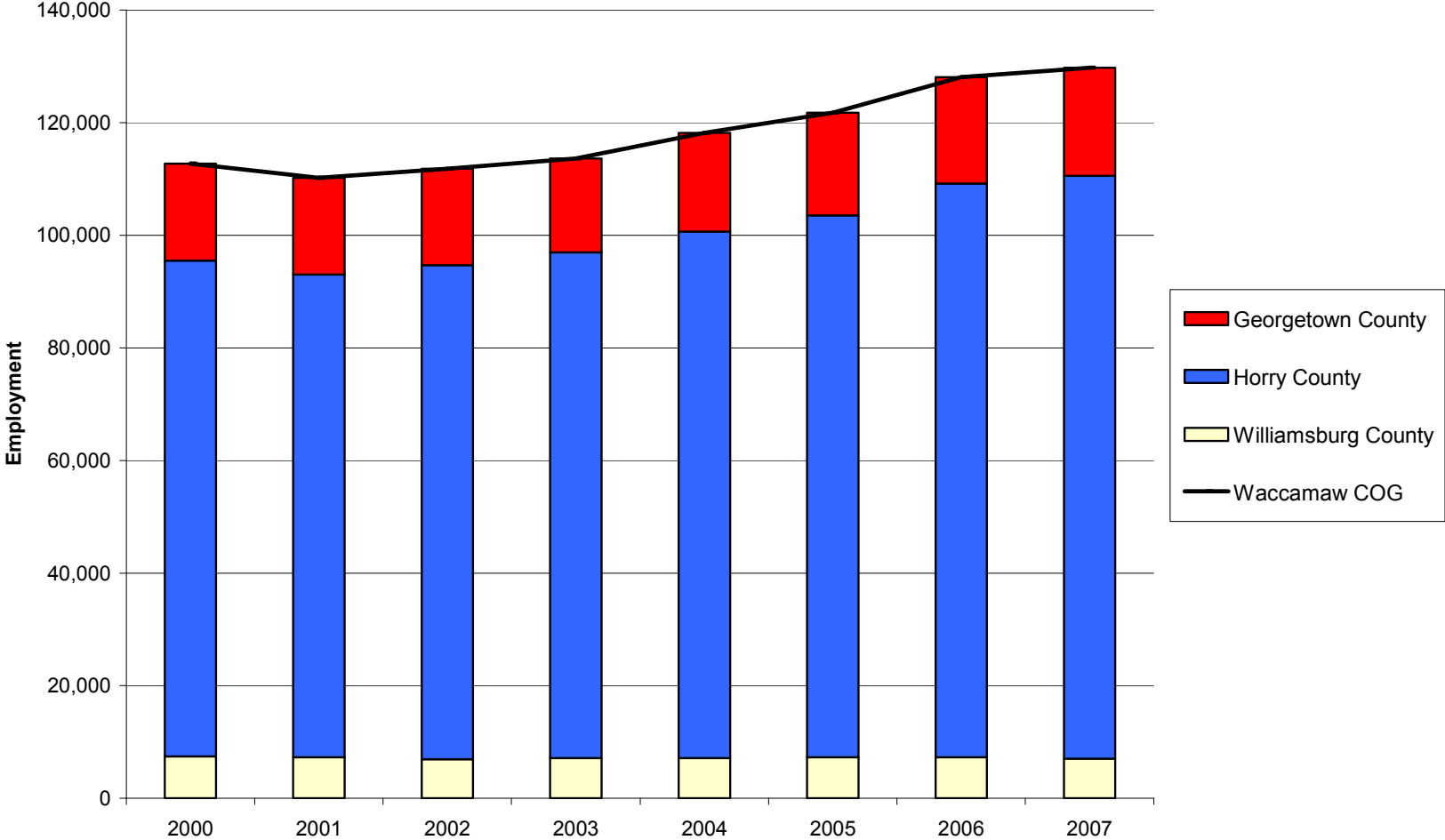
Private Establishments in the Waccamaw COG Region and Component Counties, 2000-2007

Source: Quarterly Census of Employment and Wages (2000-2007). U.S. Department of Labor, Bureau of Labor Statistics



Private Employment in the Waccamaw COG Region and Component Counties, 2000-2007

Source: Quarterly Census of Employment and Wages (2000-2007). U.S. Department of Labor, Bureau of Labor Statistics



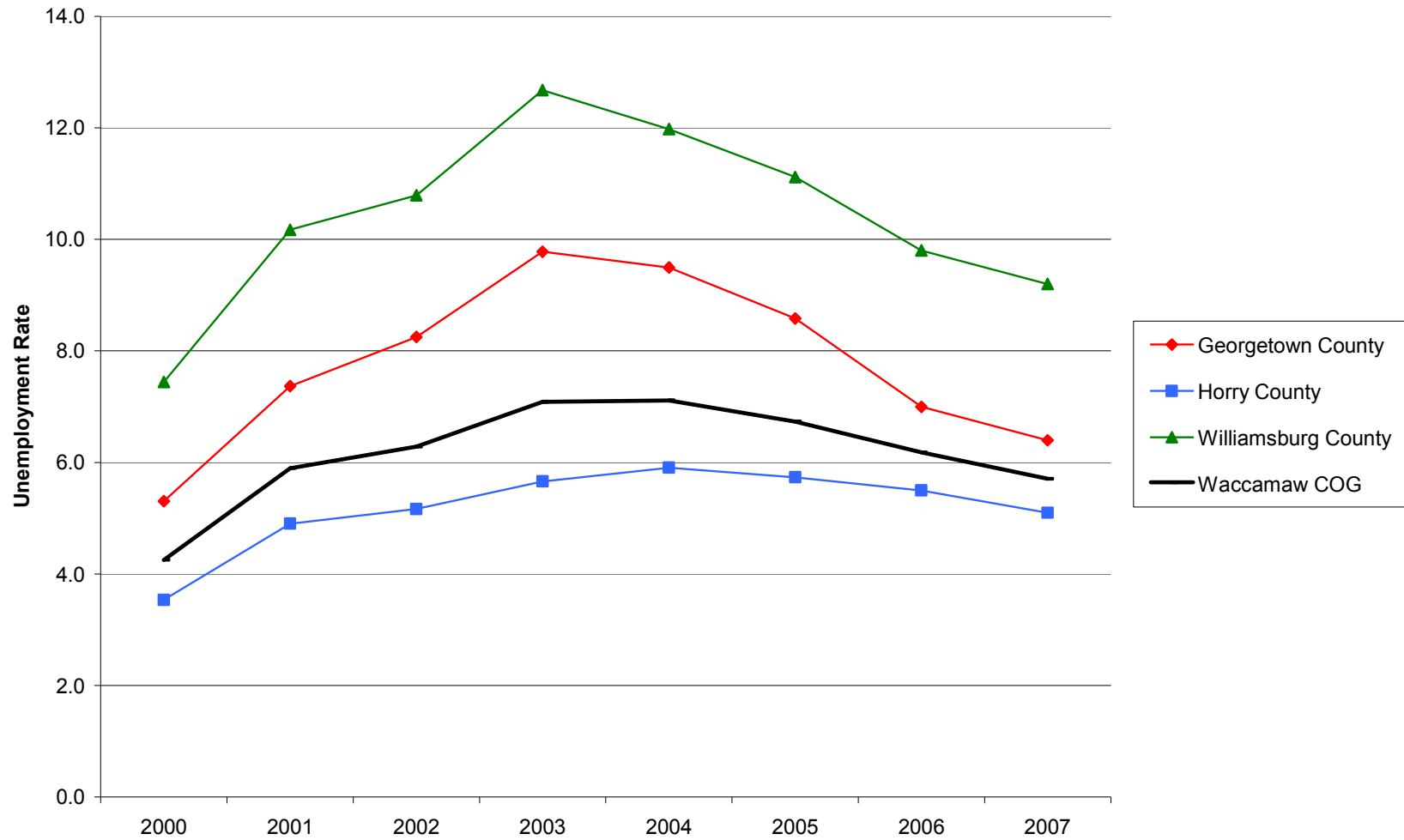
Manufacturing Employment Trends in the Waccamaw COG Region and Component Counties, 2000-2007

Source: Quarterly Census of Employment and Wages (2000-2007). U.S. Department of Labor, Bureau of Labor Statistics



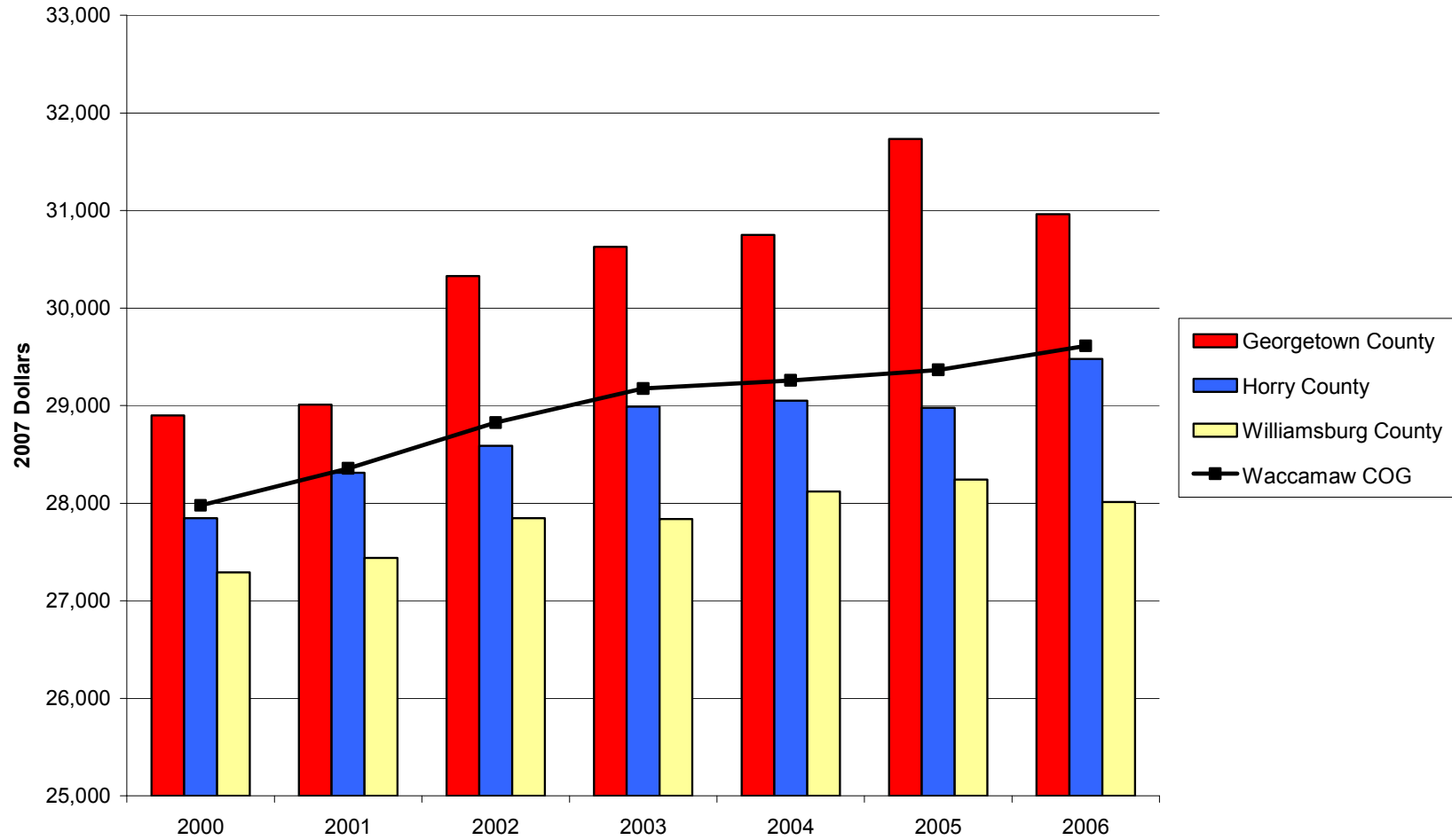
Unemployment Rates in the Waccamaw COG Region and Component Counties, 2000-2007

Source: Local Area Unemployment Statistics. U.S. Department of Labor, Bureau of Labor Statistics



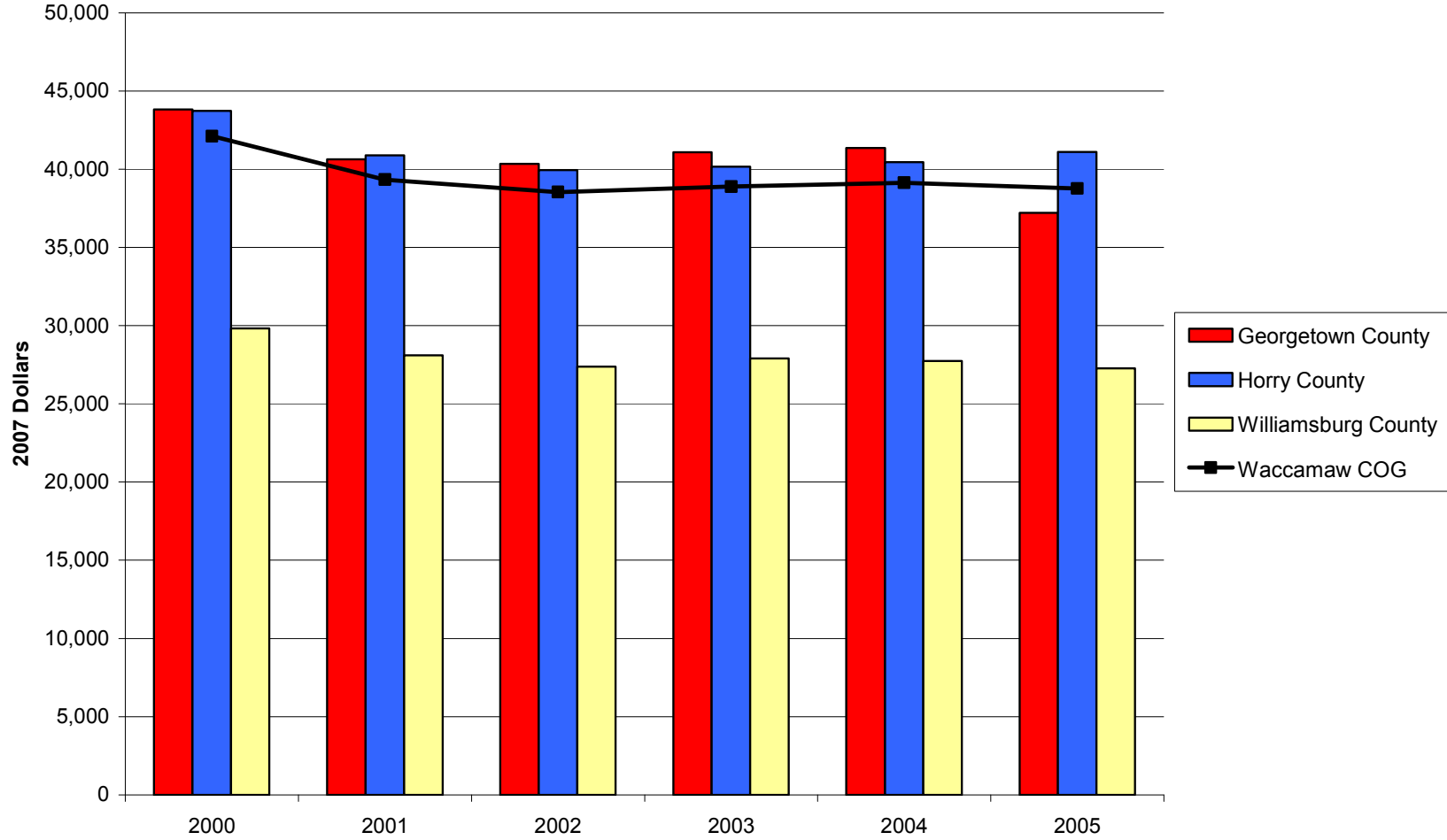
Earnings per Worker in the Waccamaw COG Region and Component Counties, 2000-2006

Source: Bureau of Economic Analysis, Regional Economic Information System (REIS): Table CA30



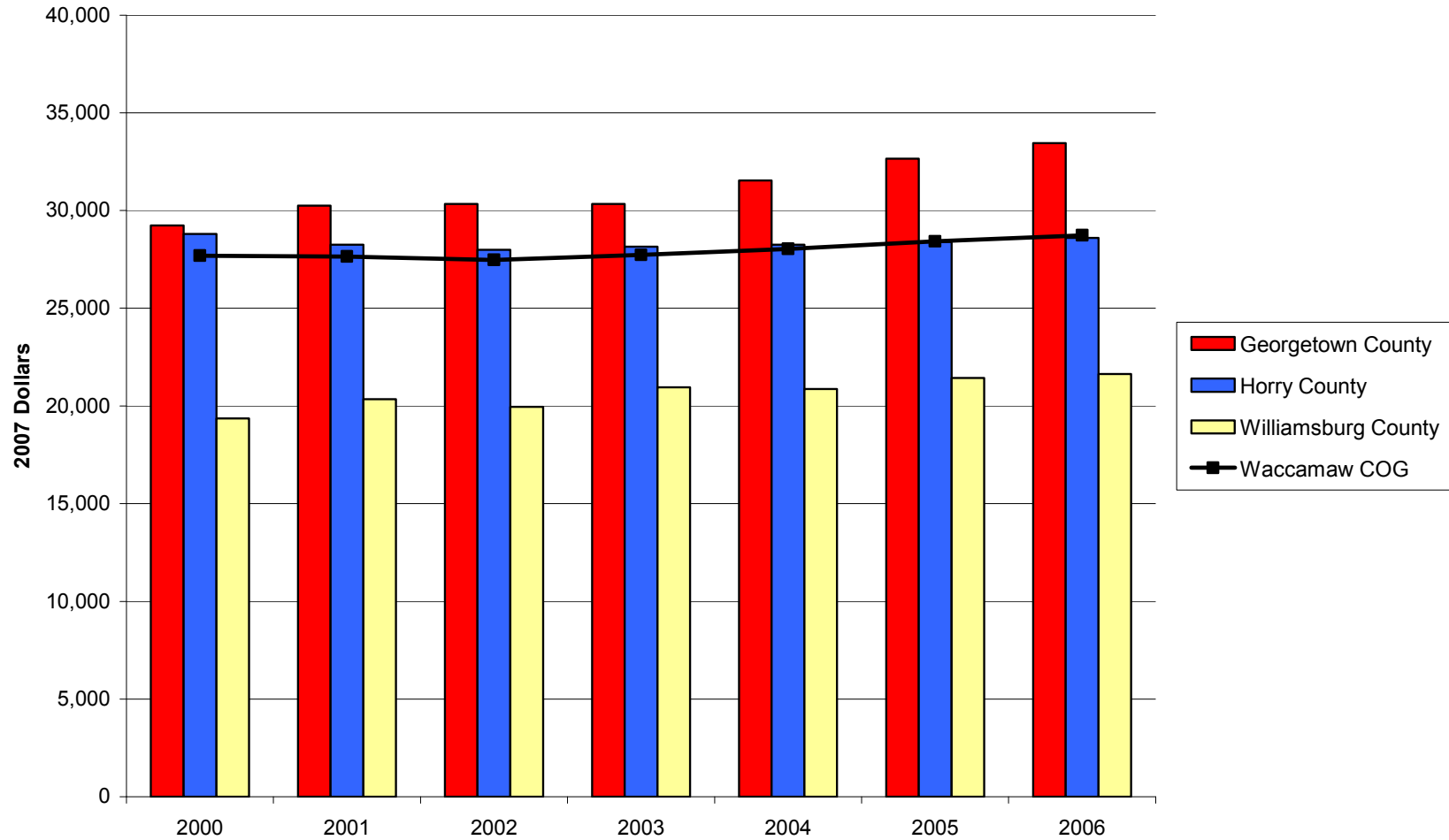
Median Household Income in the Waccamaw COG Region and Component Counties, 2000-2005

Source: U.S. Census Bureau, Small Area Income and Poverty Estimates



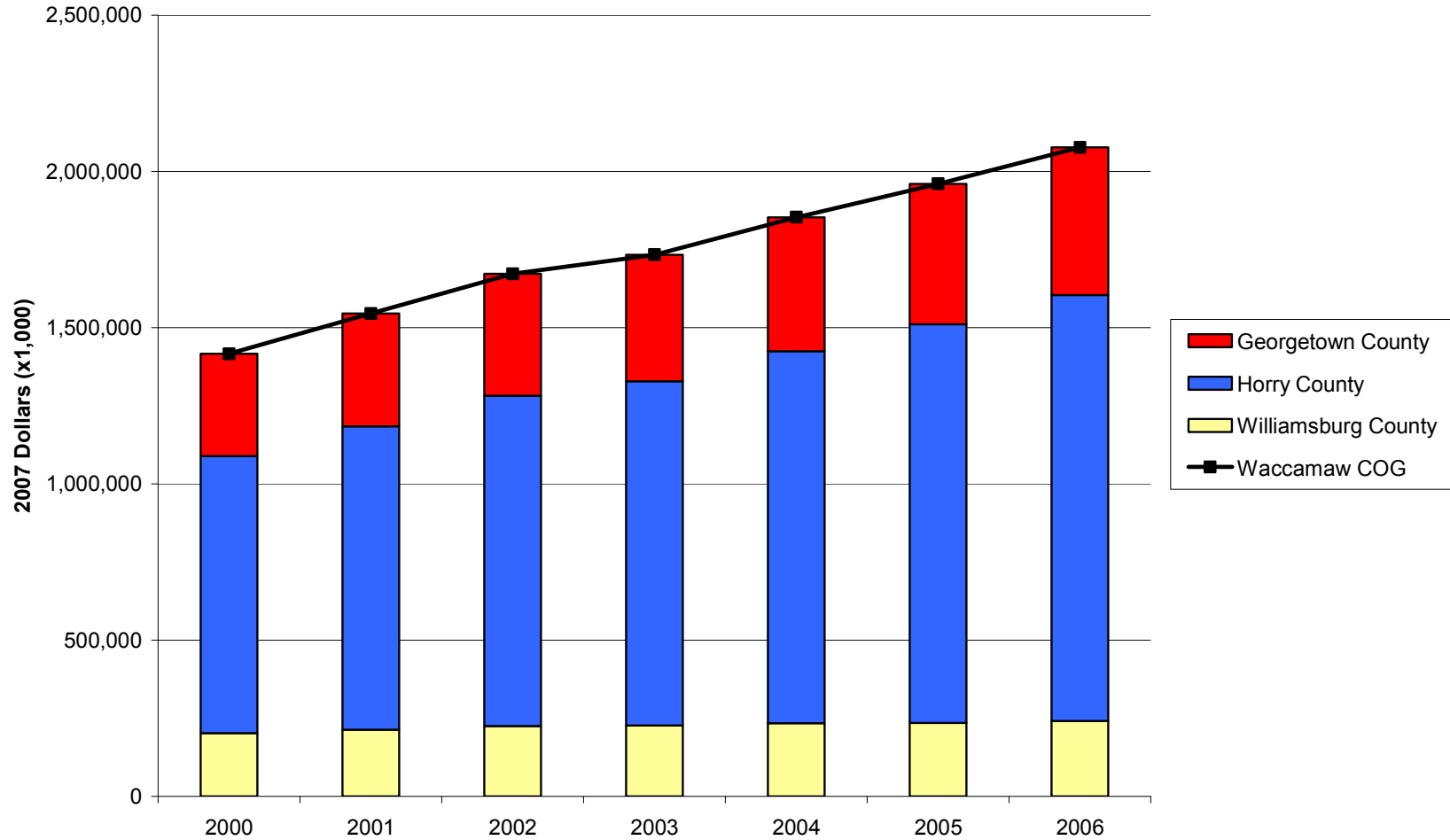
Per Capita Income in the Waccamaw COG Region and Component Counties, 2000-2006

Source: Bureau of Economic Analysis, Regional Economic Information System (REIS): Table CA31-3



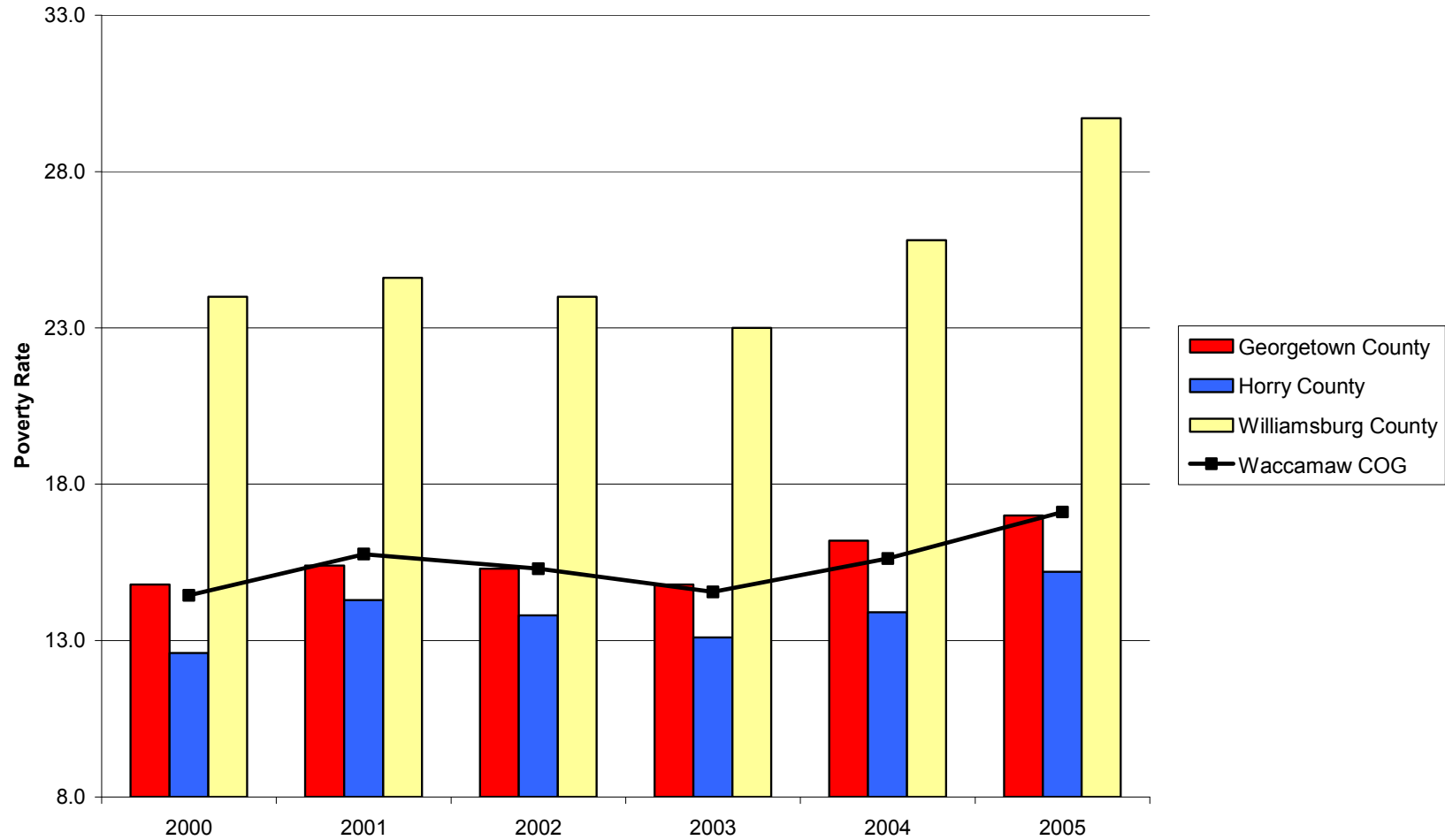
Transfer Payments in the Waccamaw COG Region and Component Counties, 2000-2006

Source: Bureau of Economic Analysis, Regional Economic Information System (REIS): Table CA35



Poverty Rates in the Waccamaw COG Region and Component Counties, 2000-2005

Source: U.S. Census Bureau, Small Area Income and Poverty Estimates



Patents per 10,000 Employees in the Waccamaw COG Region and Component Counties, 2000-2007

Source: United States Patent and Trademark Office, Patent Electronic Business Center



SBIR/STTR Phase I and II Awards per 1,000 Employees in the Waccamaw COG Region and Component Counties, 2000-2006

Source: U.S. Small Business Administration, Technology Resources Network

