

A. Economic Indicators: Establishments and Employment, Pendleton WIA

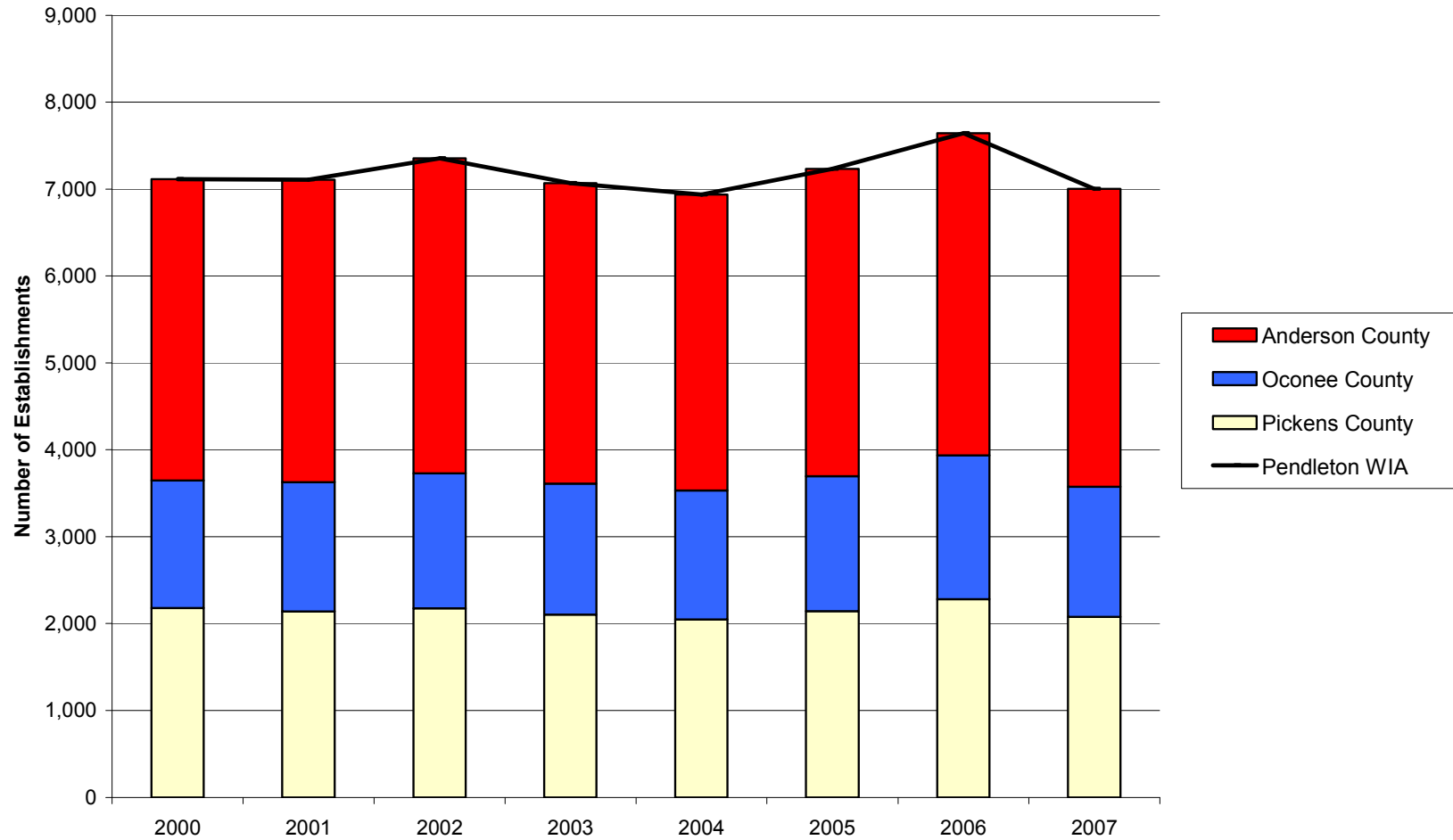
Indicator	Geographic Area	Year					Percent Change	
		2000	2004	2005	2006	2007	2000-2007	2006-2007
Private Establishments		2000	2004	2005	2006	2007	2000-2007	2006-2007
	Anderson County	3,470	3,404	3,534	3,707	3,427	-1.2%	-7.6%
	Oconee County	1,467	1,485	1,556	1,655	1,500	2.2%	-9.4%
	Pickens County	2,179	2,047	2,142	2,281	2,075	-4.8%	-9.0%
	Pendleton WIA	7,116	6,936	7,232	7,643	7,002	-1.6%	-8.4%
	South Carolina	110,221	108,929	115,194	125,222	113,254	2.8%	-9.6%
	United States	7,646,318	8,093,142	8,294,662	8,505,496	8,680,218	13.5%	2.1%
Employment		2000	2004	2005	2006	2007	2000-2007	2006-2007
	Anderson County	52,923	48,528	48,069	48,313	48,820	-7.8%	1.0%
	Oconee County	21,912	19,827	18,907	17,721	17,806	-18.7%	0.5%
	Pickens County	29,319	26,532	26,850	27,998	28,583	-2.5%	2.1%
	Pendleton WIA	104,154	94,887	93,826	94,032	95,209	-8.6%	1.3%
	South Carolina	1,507,621	1,476,668	1,500,676	1,534,903	1,563,381	3.7%	1.9%
	United States	110,023,983	108,490,066	110,611,016	112,718,858	114,014,680	3.6%	1.1%
Manufacturing Employment		2000	2004	2005	2006	2007	2000-2007	2006-2007
	Anderson County	19,027	14,119	14,334	13,947	13,345	-29.9%	-4.3%
	Oconee County	9,656	7,274	6,627	5,630	5,283	-45.3%	-6.2%
	Pickens County	9,196	6,149	6,117	6,628	6,683	-27.3%	0.8%
	Pendleton WIA	37,879	27,542	27,078	26,205	25,311	-33.2%	-3.4%
	South Carolina	335,118	267,426	262,714	253,811	249,647	-25.5%	-1.6%
	United States	17,314,423	14,257,380	14,190,394	14,110,663	13,834,745	-20.1%	-2.0%
Unemployment		2000	2004	2005	2006	2007	2000-2007	2006-2007
	Anderson County	2,551	5,958	6,199	5,695	5,144	101.6%	-9.7%

County							
Oconee County	1,116	2,357	2,751	2,724	2,177	95.1%	-20.1%
Pickens County	1,721	3,835	3,741	3,561	3,088	79.4%	-13.3%
Pendleton WIA	5,388	12,150	12,691	12,300	10,409	93.2%	-15.4%
South Carolina	70,821	138,938	139,693	134,523	125,262	76.9%	-6.9%
United States	5,692,000	8,149,000	7,591,000	7,001,000	7,078,000	24.3%	1.1%

Unemployment Rate	2000	2004	2005	2006	2007	2000-2007	2006-2007
Anderson County	3.0	7.1	7.3	6.7	6.0	3.0	-0.7
Oconee County	3.4	7.4	8.6	8.8	7.2	3.8	-1.6
Pickens County	3.0	6.7	6.5	6.1	5.3	2.3	-0.8
Pendleton WIA	3.1	7.1	7.3	7.0	6.0	2.9	-1.0
South Carolina	3.6	6.8	6.7	6.4	5.9	2.3	-0.5
United States	4.0	5.5	5.1	4.6	4.6	0.6	0.0

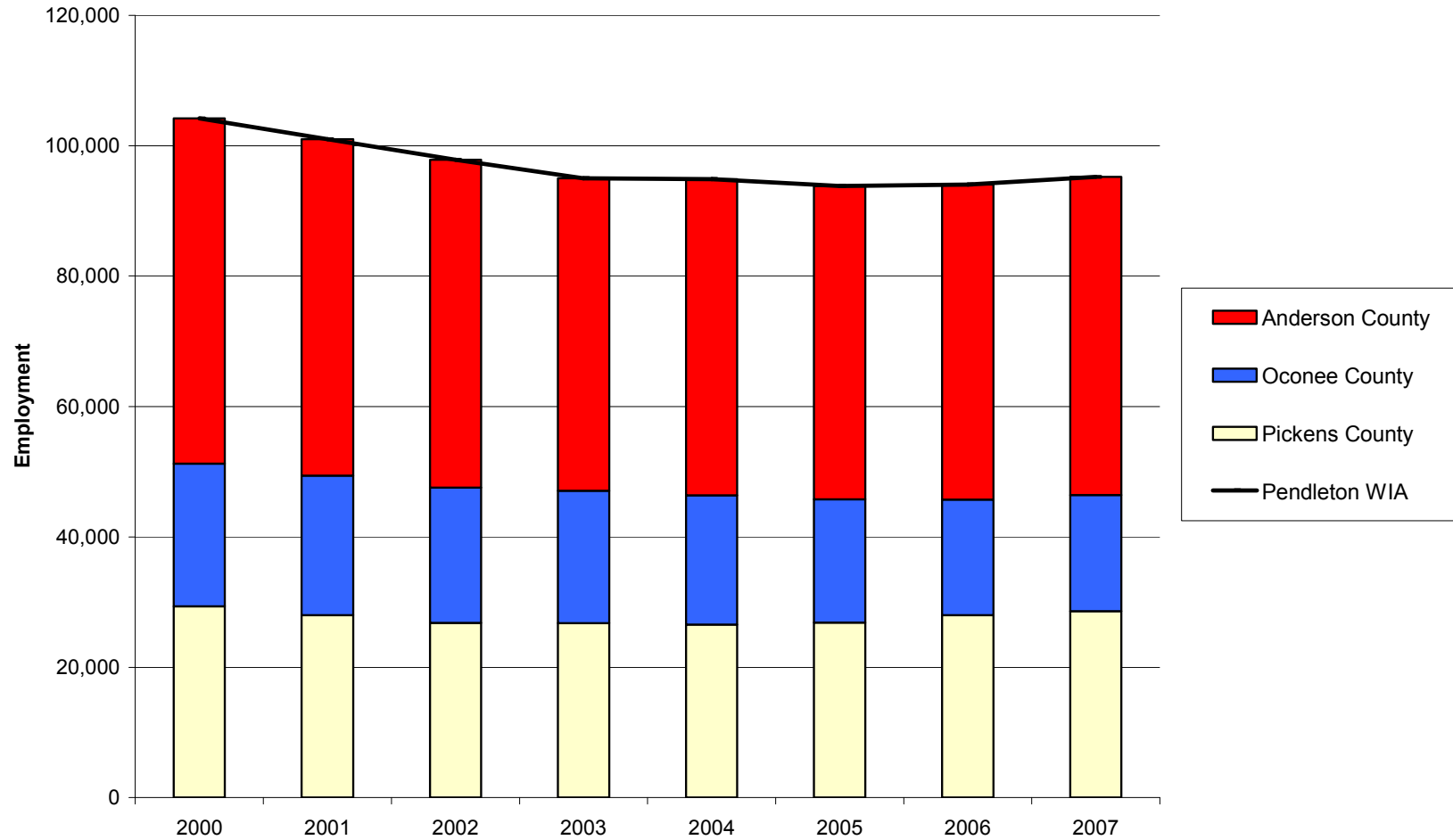
Private Establishments in the Pendleton WIA Region and Component Counties, 2000-2007

Source: Quarterly Census of Employment and Wages (2000-2007). U.S. Department of Labor, Bureau of Labor Statistics



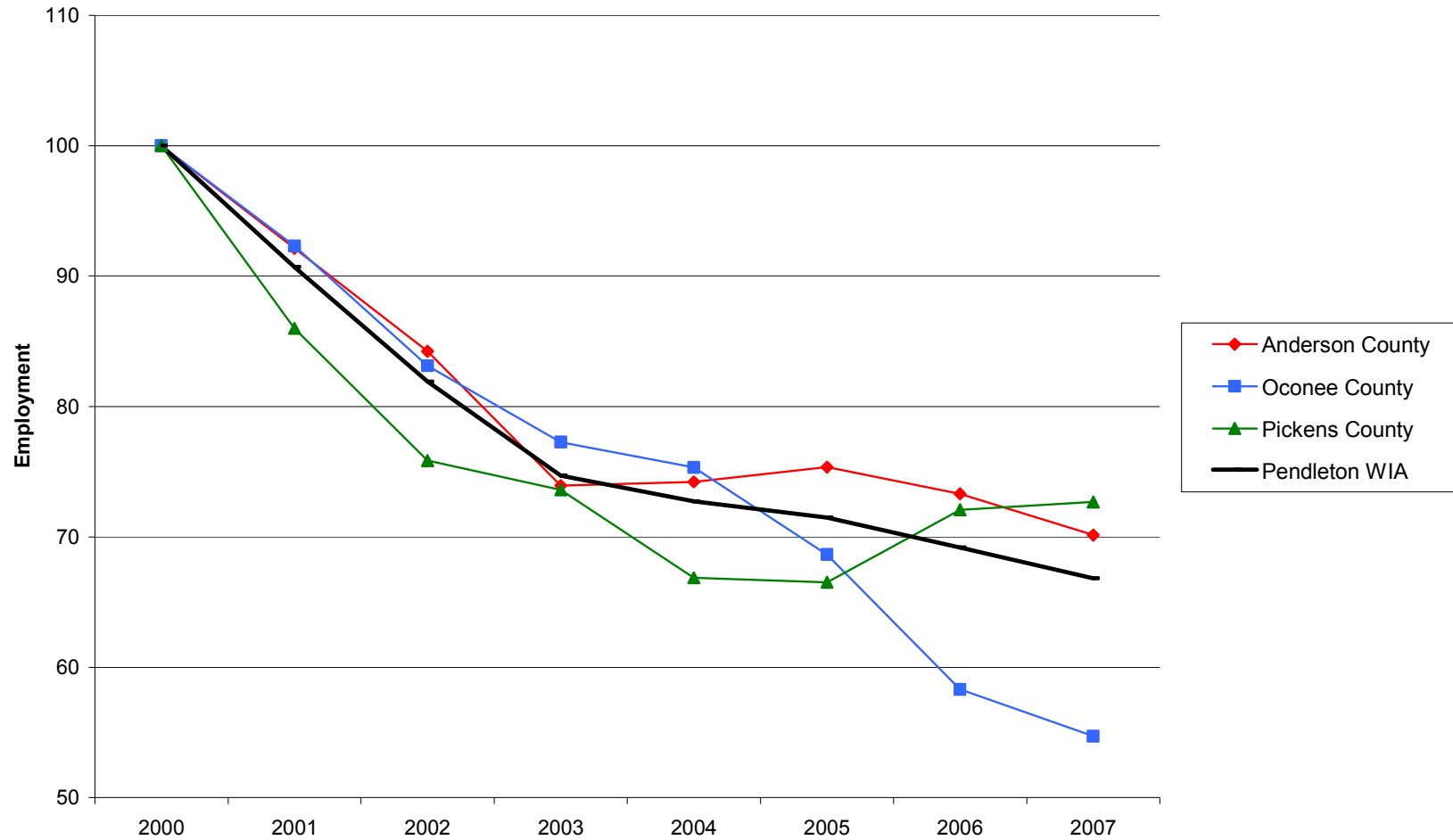
Private Employment in the Pendleton WIA Region and Component Counties, 2000-2007

Source: Quarterly Census of Employment and Wages (2000-2007). U.S. Department of Labor, Bureau of Labor Statistics



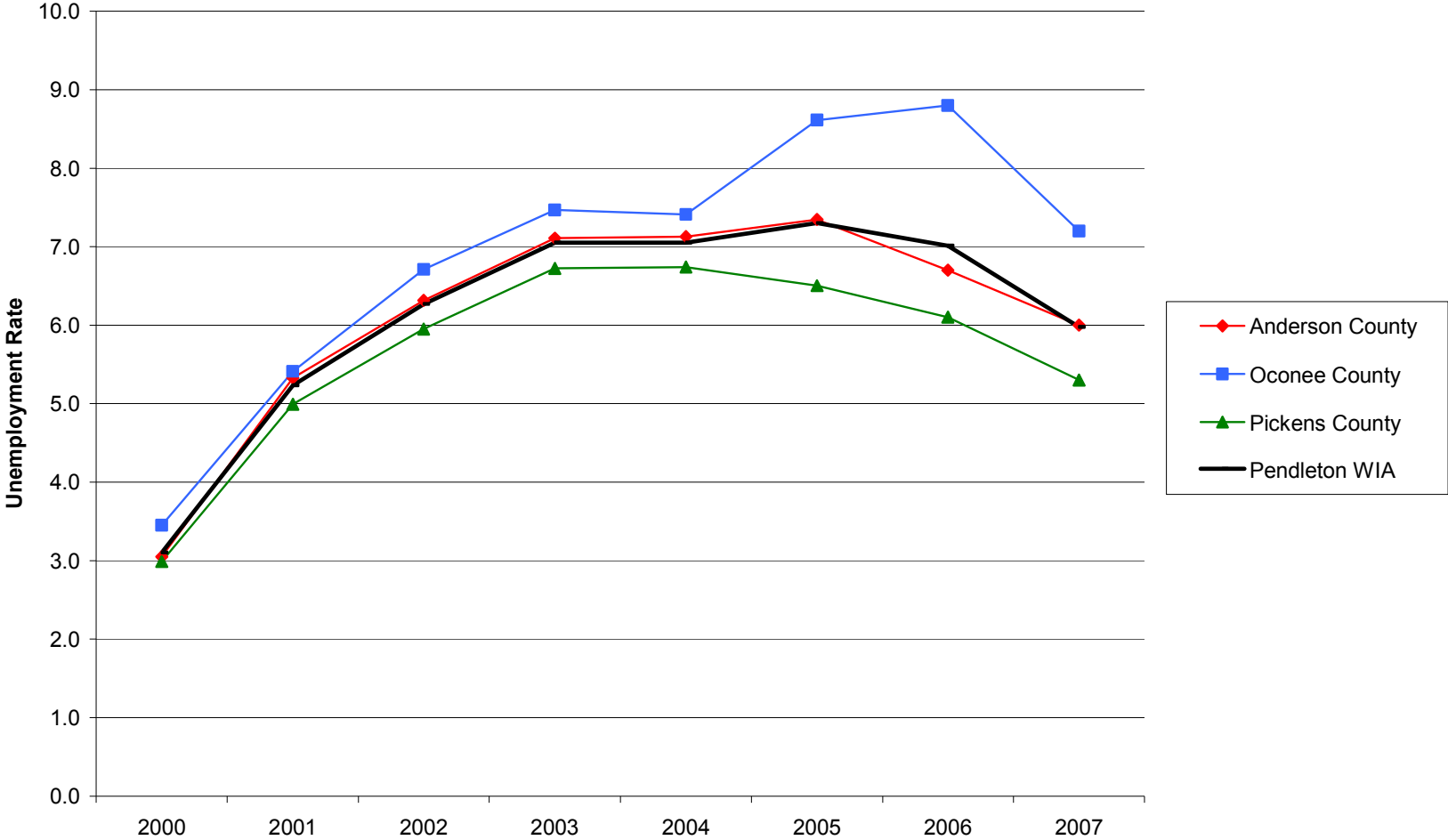
Manufacturing Employment Trends in the Pendleton WIA Region and Component Counties, 2000-2007

Source: Quarterly Census of Employment and Wages (2000-2007). U.S. Department of Labor, Bureau of Labor Statistics



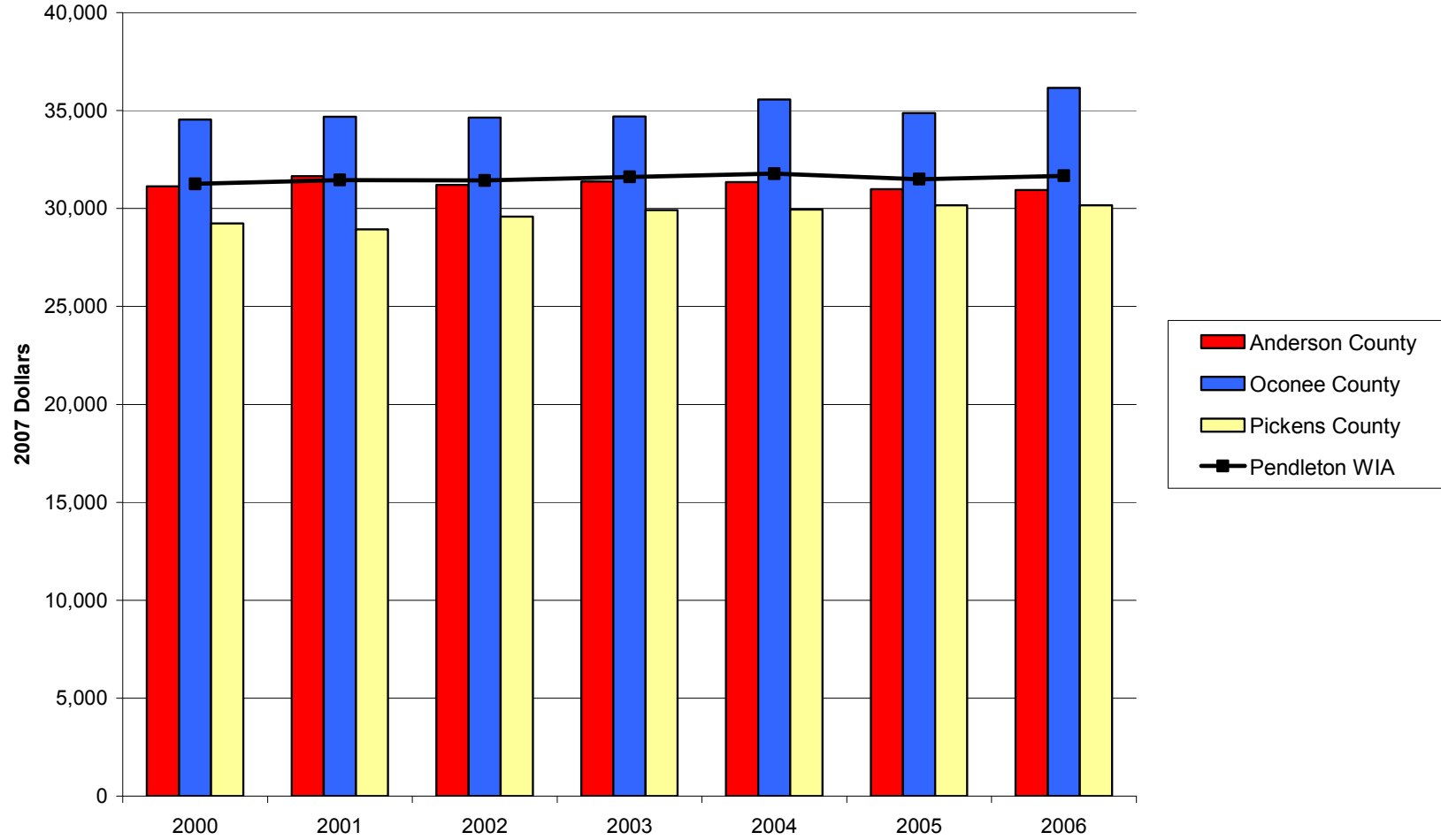
Unemployment Rates in the Pendleton WIA Region and Component Counties, 2000-2007

Source: Local Area Unemployment Statistics. U.S. Department of Labor, Bureau of Labor



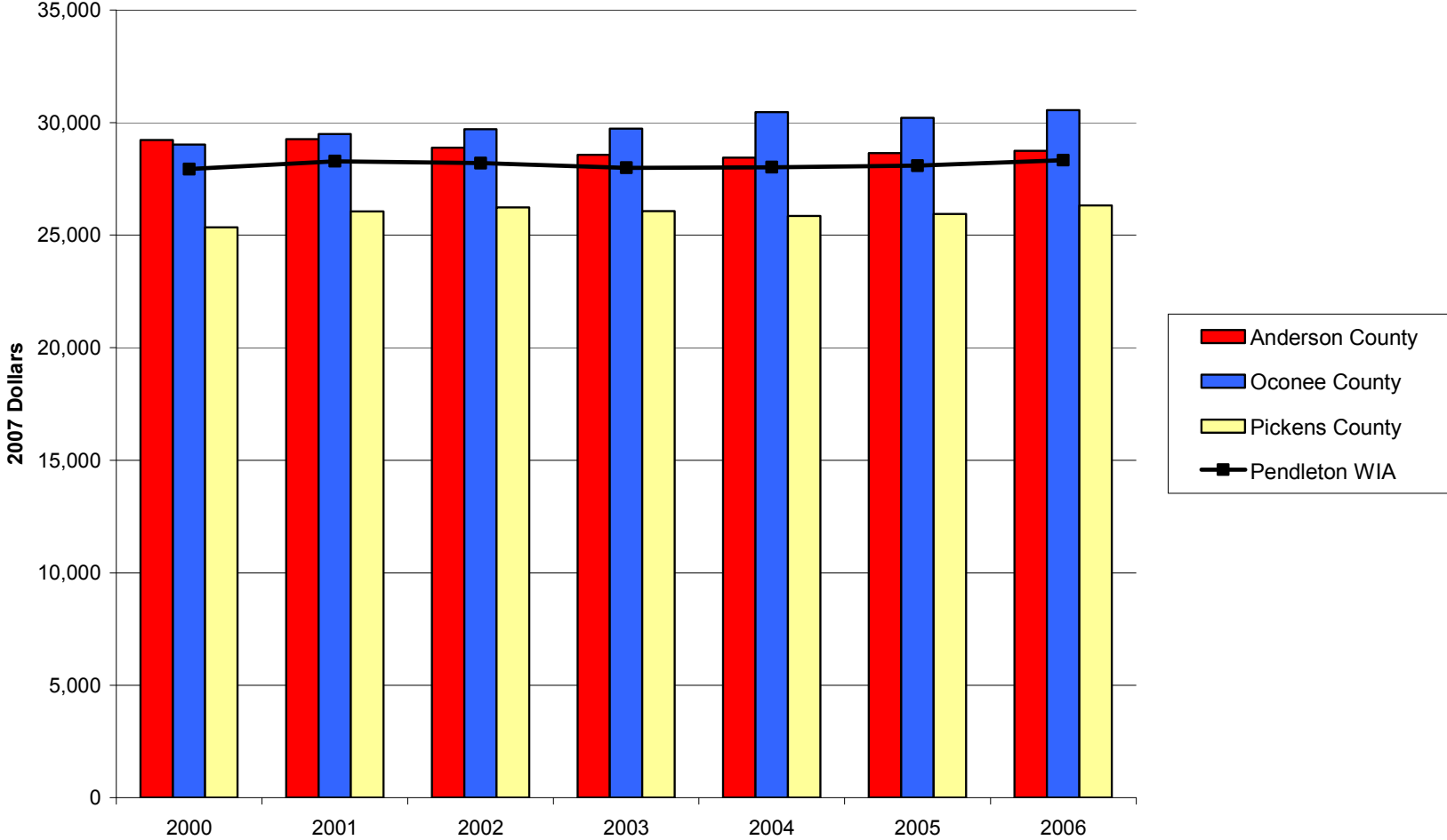
Earnings per Worker in the Pendleton WIA Region and Component Counties, 2000-2006

Source: Bureau of Economic Analysis, Regional Economic Information System (REIS): Table CA30



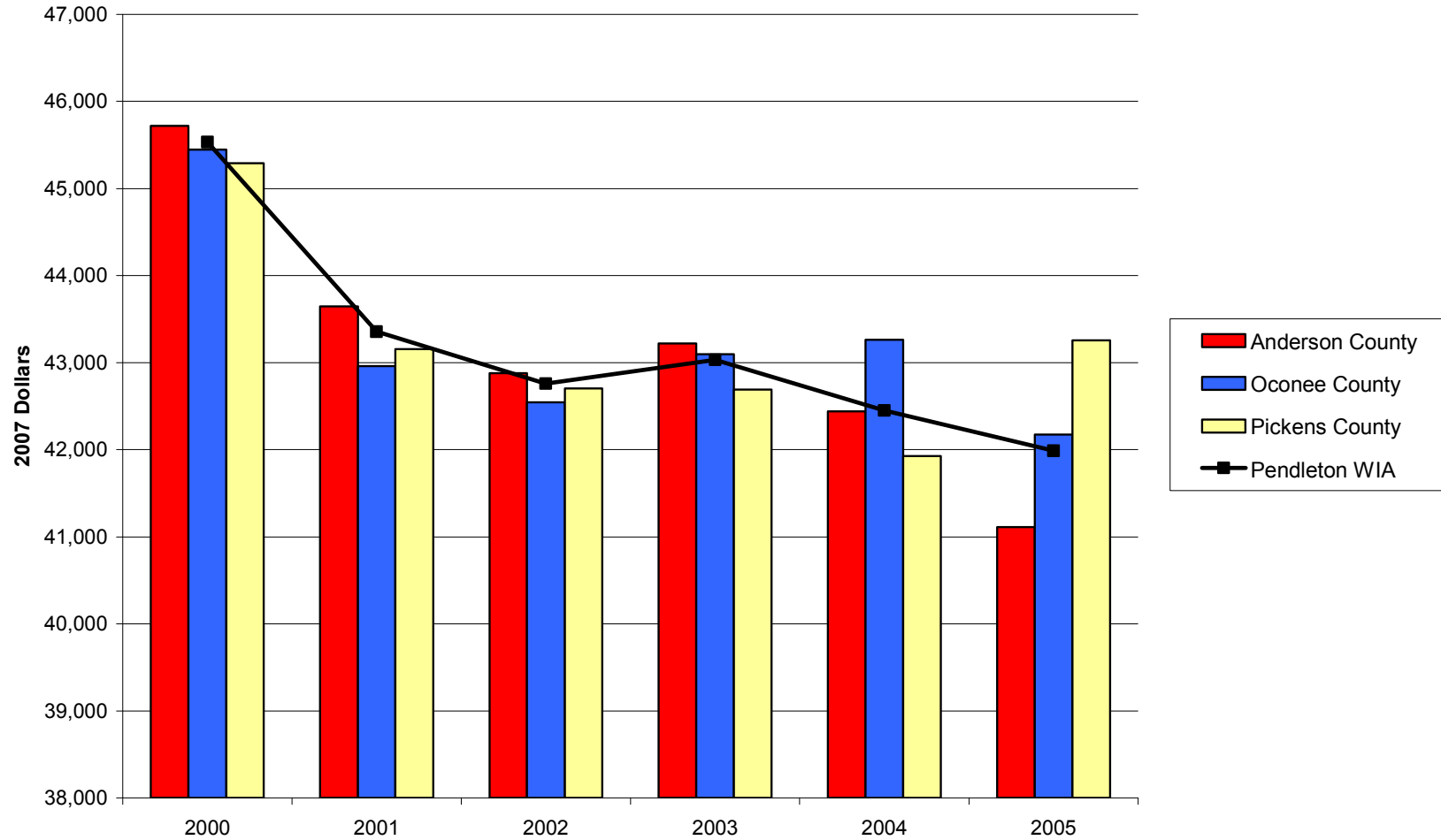
Per Capita Income in the Pendleton WIA Region and Component Counties, 2000-2006

Source: Bureau of Economic Analysis, Regional Economic Information System (REIS): Table CA31-3



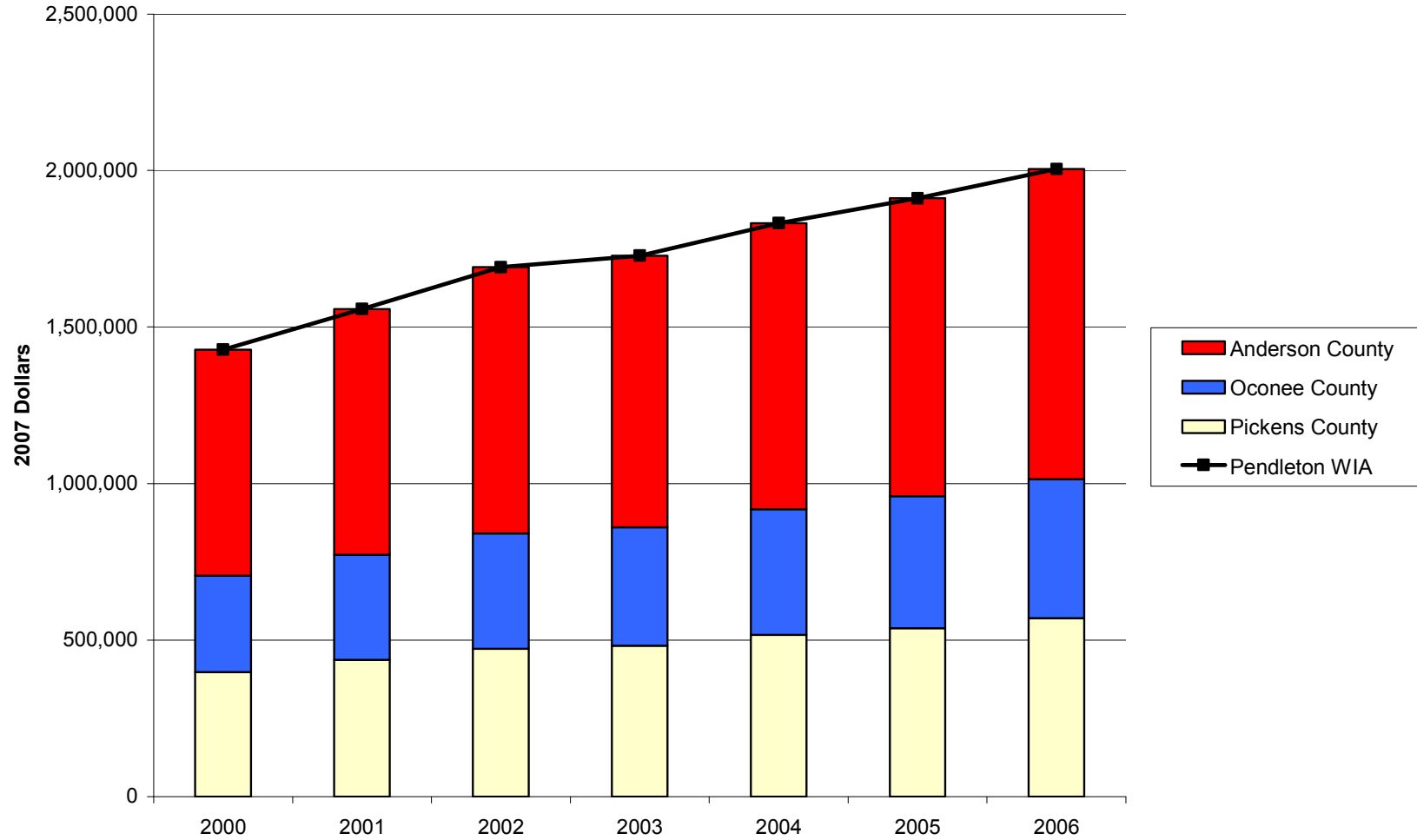
Median Household Income in the Pendleton WIA Region and Component Counties, 2000-2005

Source: U.S. Census Bureau, Small Area Income and Poverty Estimates



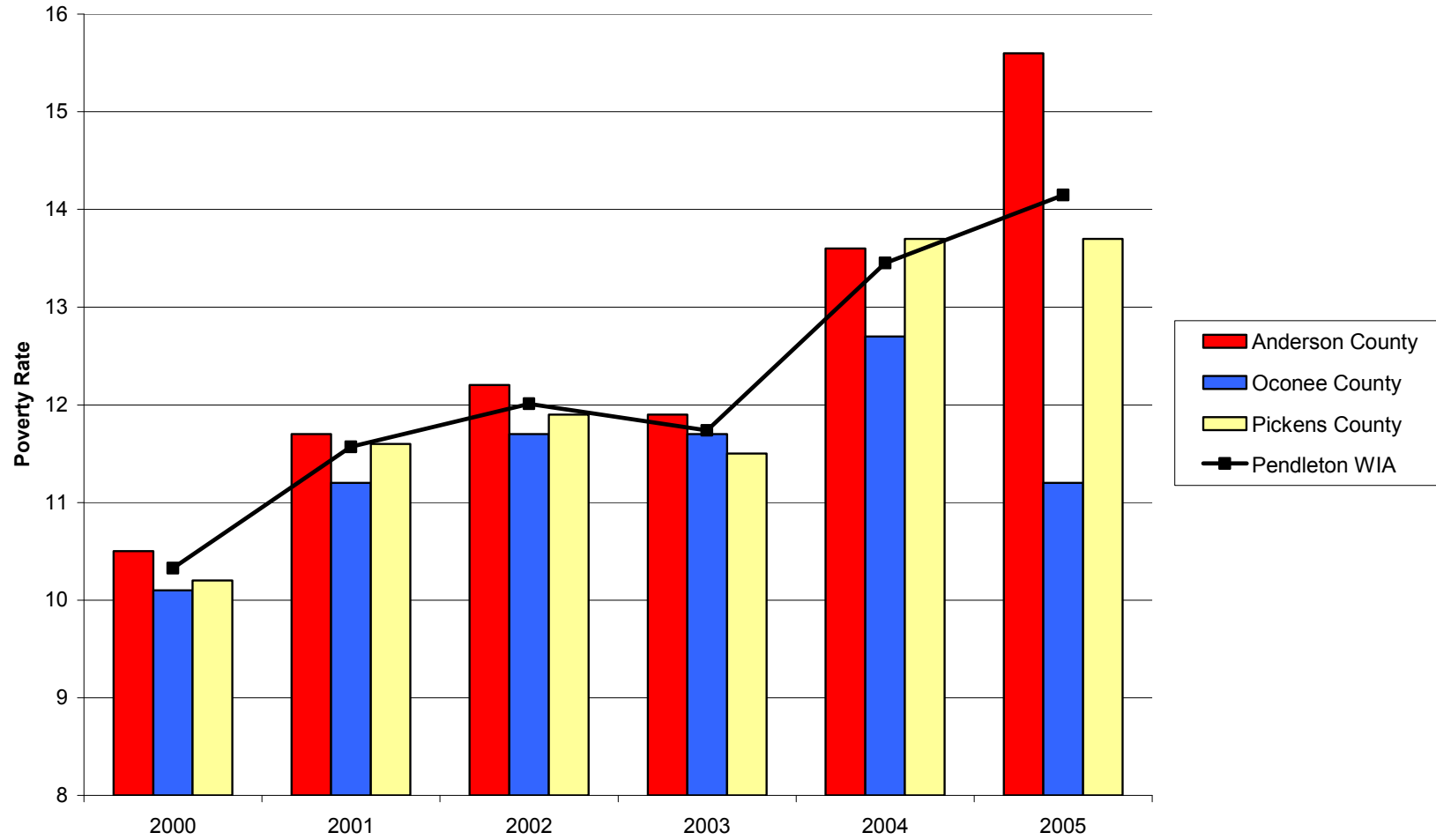
Transfer Payments in the Pendleton WIA Region and Component Counties, 2000-2006

Source: Bureau of Economic Analysis, Regional Economic Information System (REIS): Table CA35



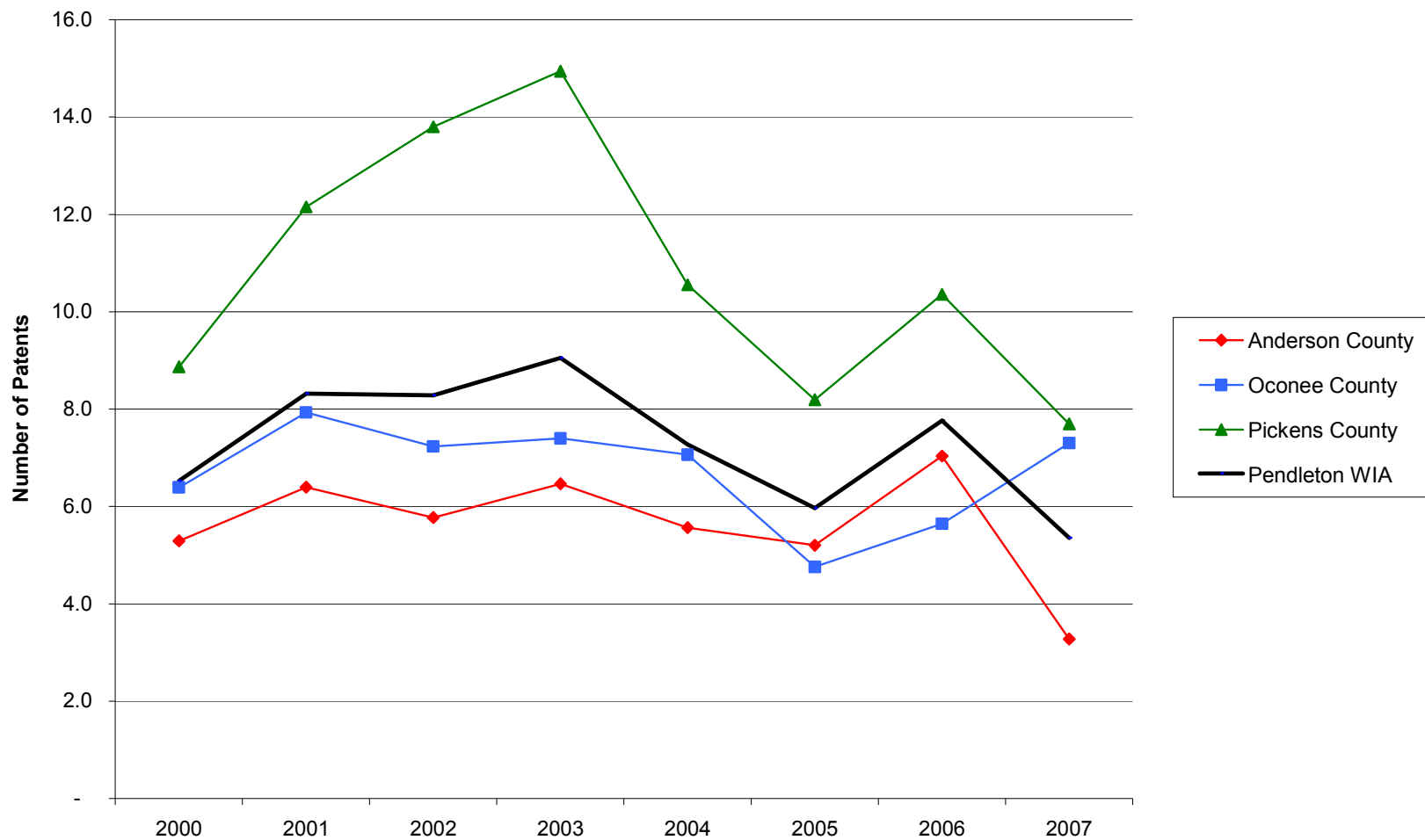
Poverty Rates in the Pendleton WIA Region and Component Counties, 2000-2005

Source: U.S. Census Bureau, Small Area Income and Poverty Estimates



Patents per 10,000 Employees in the Pendleton WIA Region and Component Counties, 2000-2007

Source: United States Patent and Trademark Office, Patent Electronic Business Center



SBIR/STTR Phase I and II Awards per 1,000 Employees in the Pendleton WIA Region and Component Counties, 2000-2006

Source: U.S. Small Business Administration, Technology Resources Network

