

A. Economic Indicators: Establishments and Employment, Upstate WIA

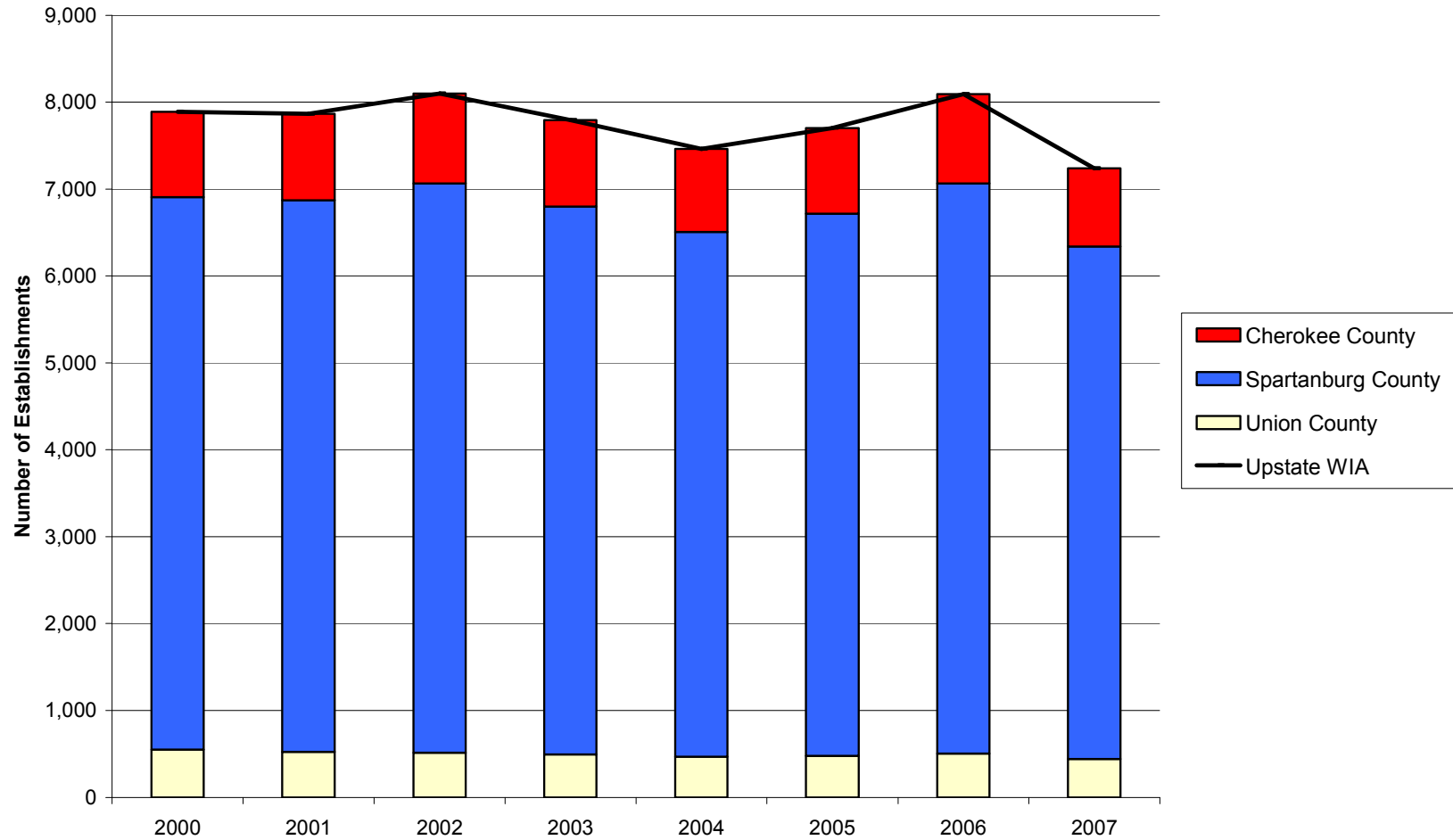
Indicator	Geographic Area	Year					Percent Change	
		2000	2004	2005	2006	2007	2000-2007	2006-2007
Private Establishments		2000	2004	2005	2006	2007	2000-2007	2006-2007
	Cherokee County	987	960	986	1,026	899	-8.9%	-12.4%
	Spartanburg County	6,352	6,038	6,239	6,565	5,899	-7.1%	-10.1%
	Union County	553	467	478	502	441	-20.3%	-12.2%
	Upstate WIA	7,892	7,465	7,703	8,093	7,239	-8.3%	-10.6%
	South Carolina	110,221	108,929	115,194	125,222	113,254	2.8%	-9.6%
	United States	7,646,318	8,093,142	8,294,662	8,505,496	8,680,218	13.5%	2.1%
Employment		2000	2004	2005	2006	2007	2000-2007	2006-2007
	Cherokee County	18,745	16,926	16,875	17,047	17,513	-6.6%	2.7%
	Spartanburg County	103,729	97,747	97,764	99,197	101,131	-2.5%	1.9%
	Union County	7,885	6,279	6,057	5,537	5,223	-33.8%	-5.7%
	Upstate WIA	130,359	120,952	120,696	121,781	123,867	-5.0%	1.7%
	South Carolina	1,507,621	1,476,668	1,500,676	1,534,903	1,563,381	3.7%	1.9%
	United States	110,023,983	108,490,066	110,611,016	112,718,858	114,014,680	3.6%	1.1%
Manufacturing Employment		2000	2004	2005	2006	2007	2000-2007	2006-2007
	Cherokee County	8,798	6,225	6,274	6,306	6,405	-27.2%	1.6%
	Spartanburg County	36,437	30,419	29,253	27,725	27,579	-24.3%	-0.5%
	Union County	3,853	2,717	2,471	2,069	1,949	-49.4%	-5.8%
	Upstate WIA	49,088	39,361	37,998	36,100	35,933	-26.8%	-0.5%
	South Carolina	335,118	267,426	262,714	253,811	249,647	-25.5%	-1.6%
	United States	17,314,423	14,257,380	14,190,394	14,110,663	13,834,745	-20.1%	-2.0%
Unemployment		2000	2004	2005	2006	2007	2000-2007	2006-2007
	Cherokee County	1,054	2,221	1,967	1,908	1,794	70.2%	-6.0%

Spartanburg County	4,554	9,941	9,855	8,821	7,902	73.5%	-10.4%
Union County	713	1,575	1,374	1,327	1,109	55.5%	-16.4%
Upstate WIA	6,321	13,737	13,196	12,377	10,805	70.9%	-12.7%
South Carolina	70,821	138,938	139,693	134,523	125,262	76.9%	-6.9%
United States	5,692,000	8,149,000	7,591,000	7,001,000	7,078,000	24.3%	1.1%

Unemployment Rate	2000	2004	2005	2006	2007	2000-2007	2006-2007
Cherokee County	4.1	8.8	7.9	7.6	7.1	3.0	-0.5
Spartanburg County	3.5	7.5	7.4	6.6	6.0	2.5	-0.6
Union County	5.0	12.1	10.8	10.8	9.5	4.5	-1.3
Upstate WIA	3.7	8.1	7.8	7.1	6.4	2.6	-0.8
South Carolina	3.6	6.8	6.7	6.4	5.9	2.3	-0.5
United States	4.0	5.5	5.1	4.6	4.6	0.6	0.0

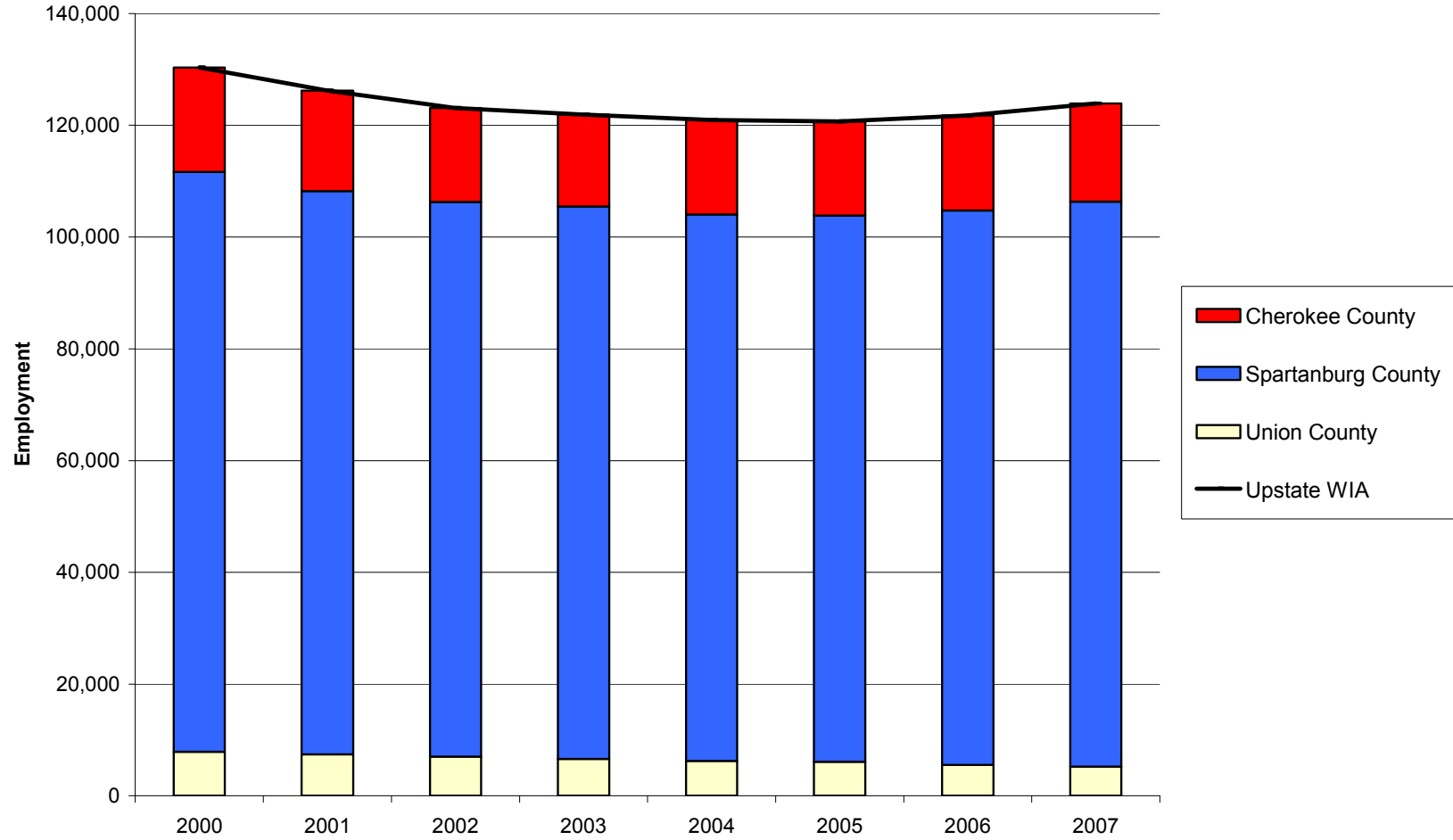
Private Establishments in the Upstate WIA Region and Component Counties, 2000-2007

Source: Quarterly Census of Employment and Wages (2000-2007). U.S. Department of Labor, Bureau of Labor Statistics



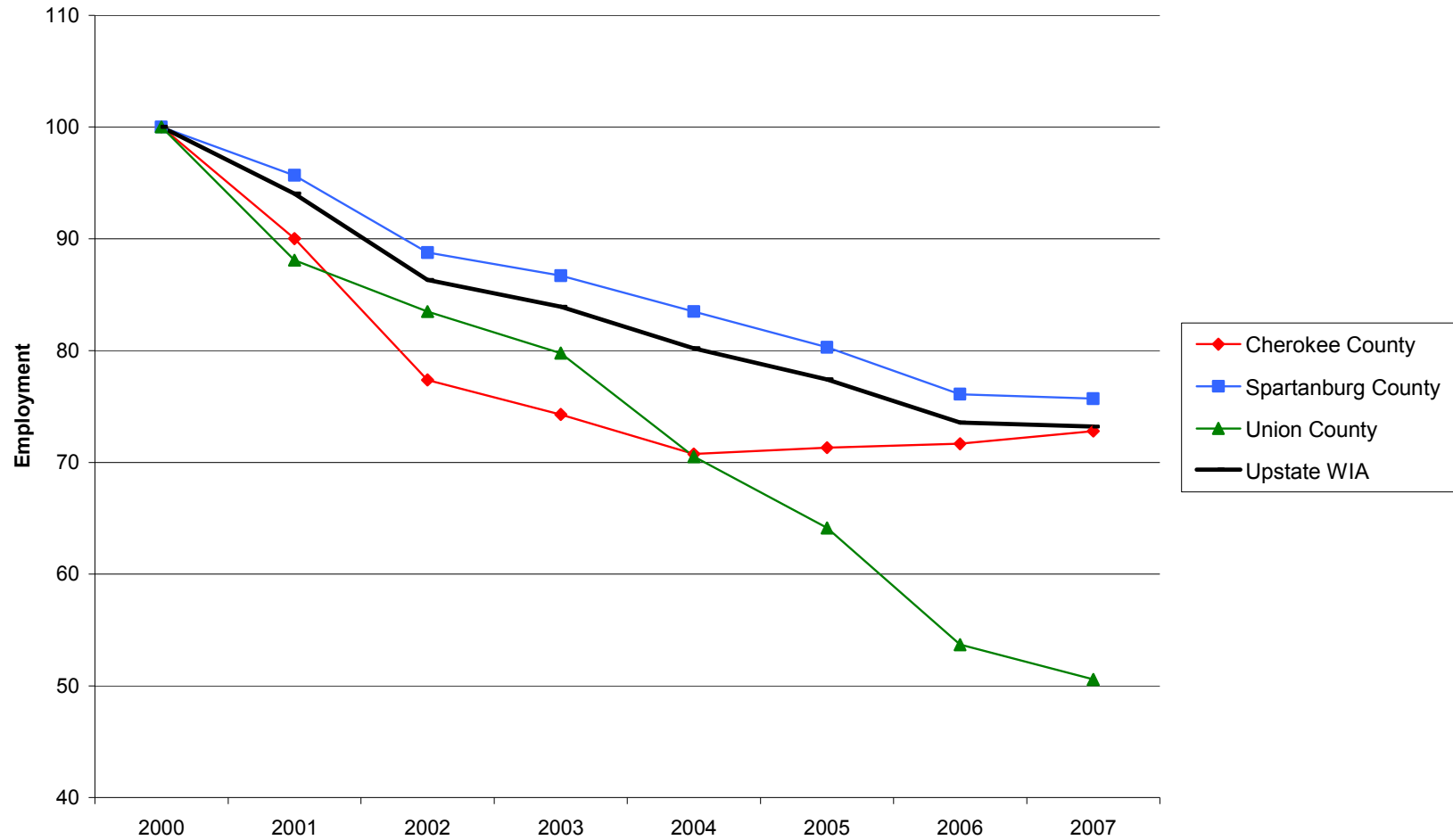
Private Employment in the Upstate WIA Region and Component Counties, 2000-2007

Source: Quarterly Census of Employment and Wages (2000-2007). U.S. Department of Labor, Bureau of Labor Statistics



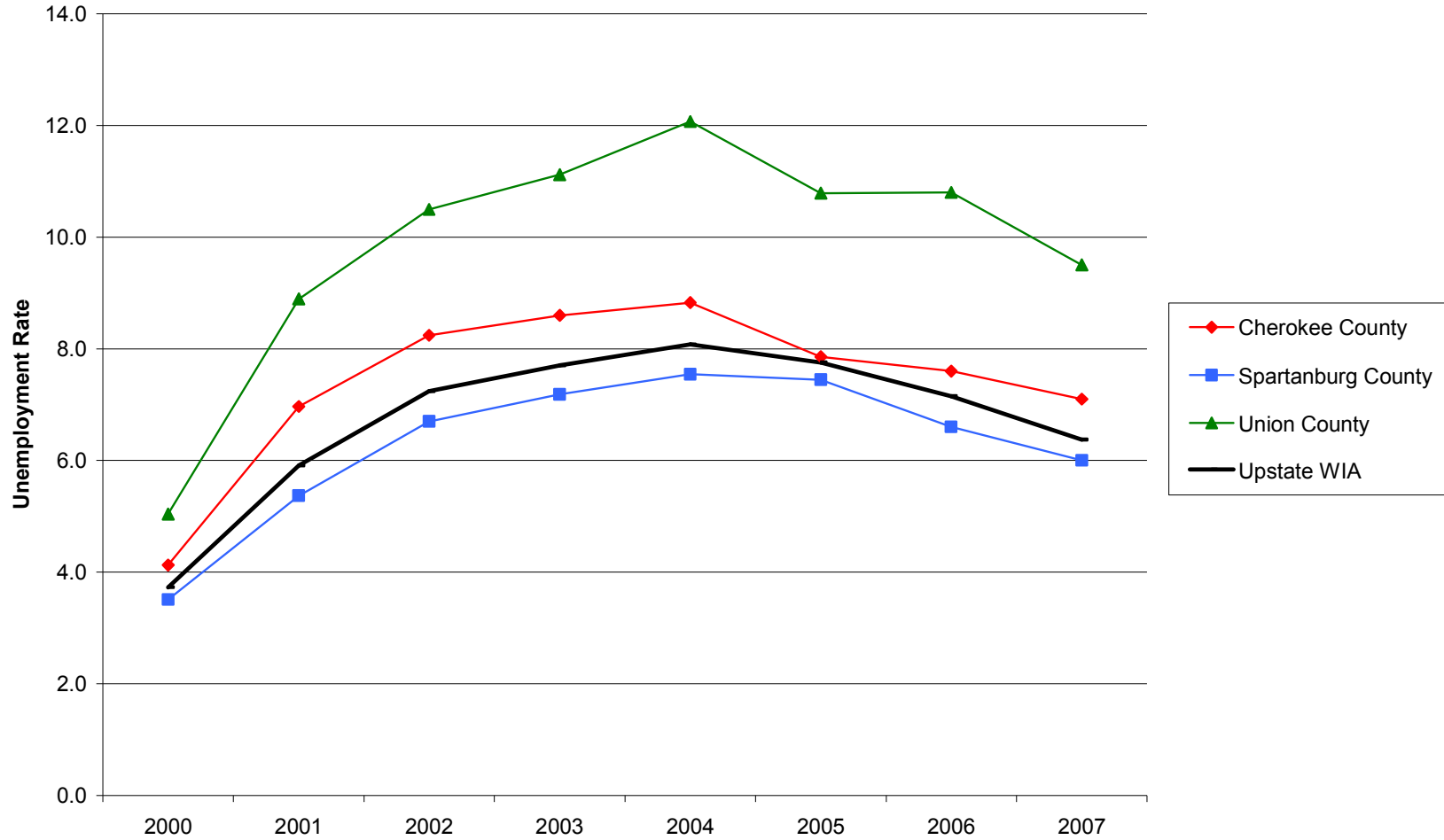
Manufacturing Employment Trends in the Upstate WIA Region and Component Counties, 2000-2007

Source: Quarterly Census of Employment and Wages (2000-2007). U.S. Department of Labor, Bureau of Labor Statistics



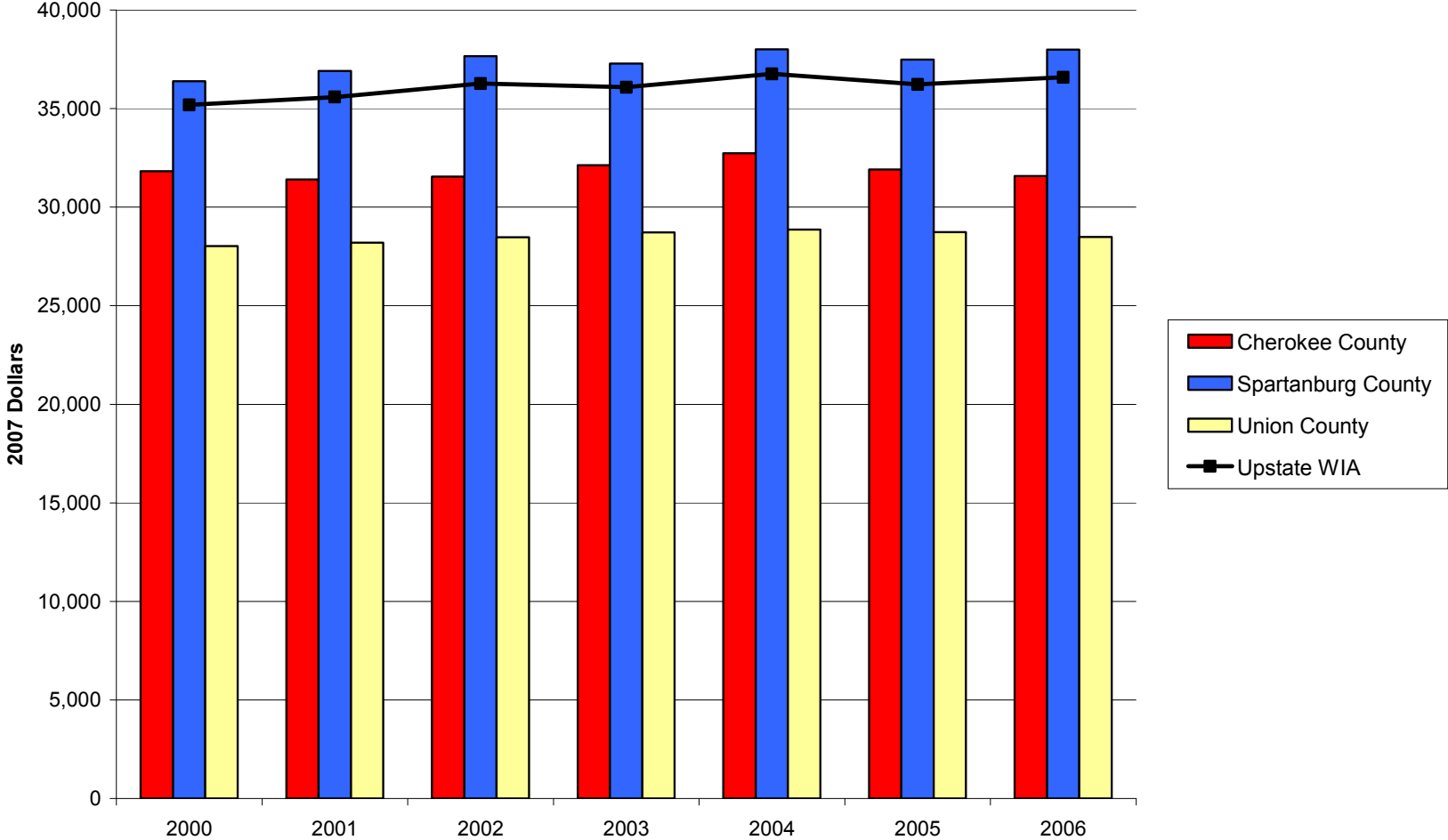
Unemployment Rates in the Upstate WIA Region and Component Counties, 2000-2007

Source: Local Area Unemployment Statistics. U.S. Department of Labor, Bureau of Labor



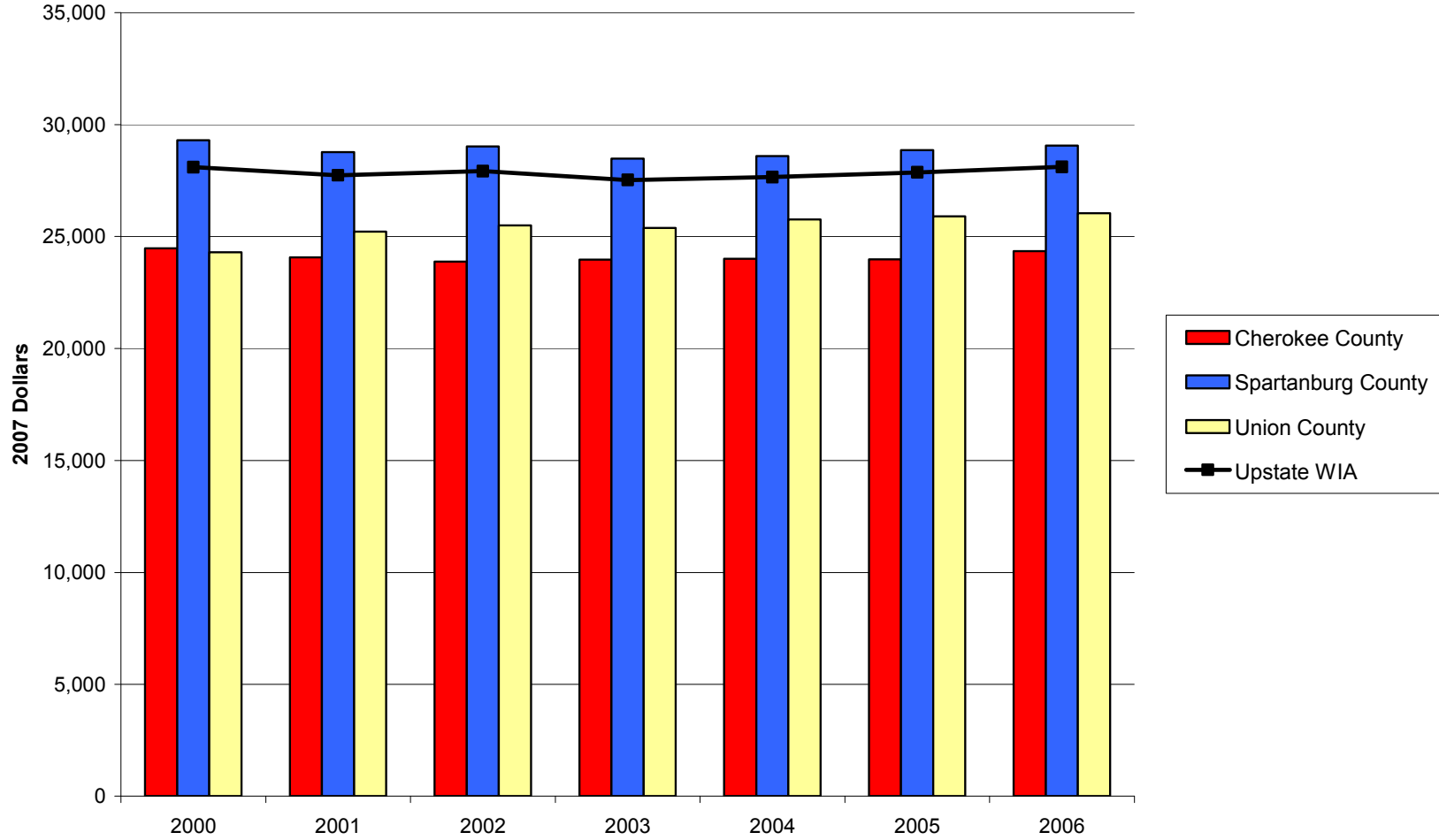
Earnings per Worker in the Upstate WIA Region and Component Counties, 2000-2006

Source: Bureau of Economic Analysis, Regional Economic Information System (REIS): Table CA30



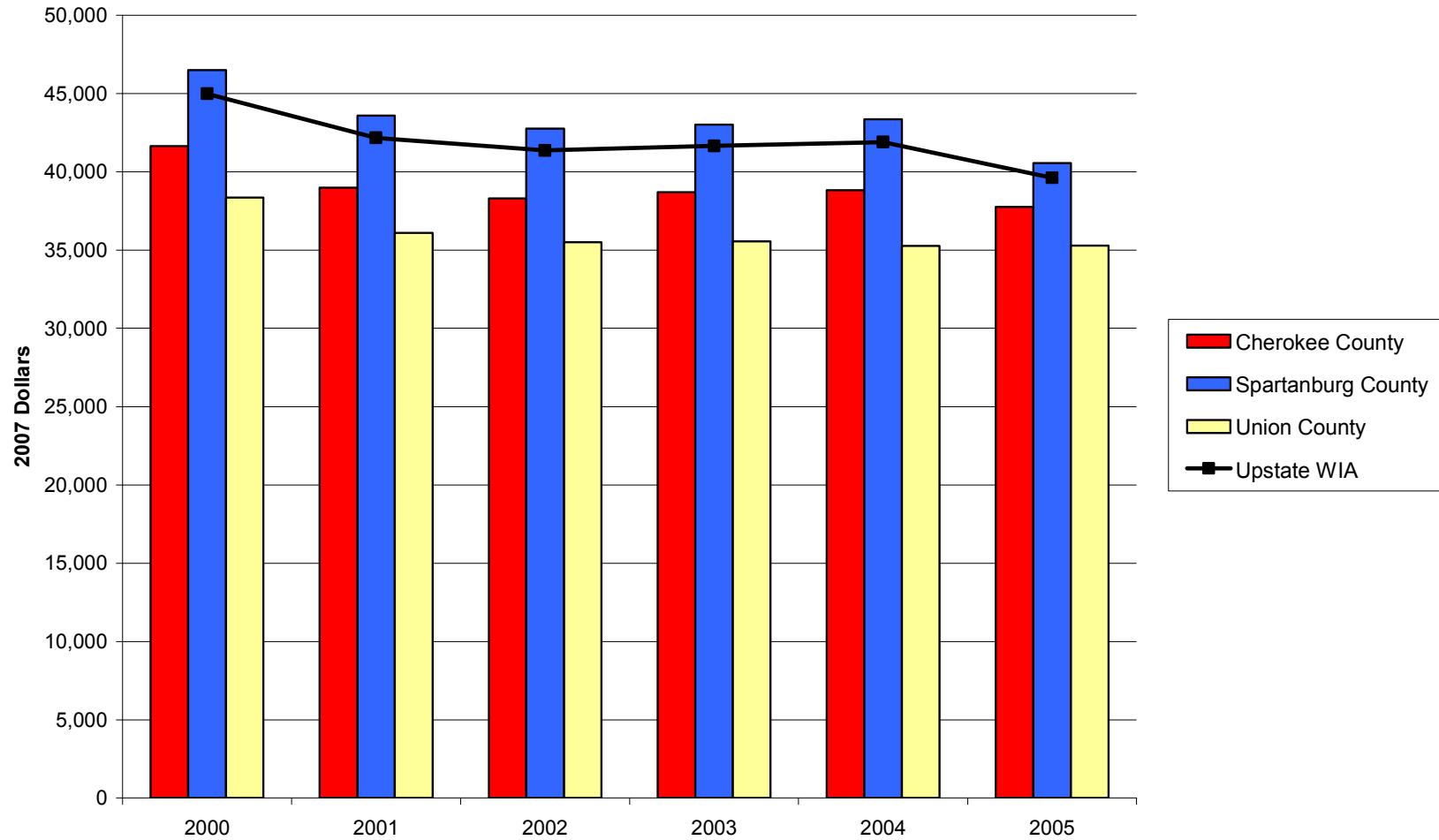
Per Capita Income in the Upstate WIA Region and Component Counties, 2000-2006

Source: Bureau of Economic Analysis, Regional Economic Information System (REIS): Table CA31-3



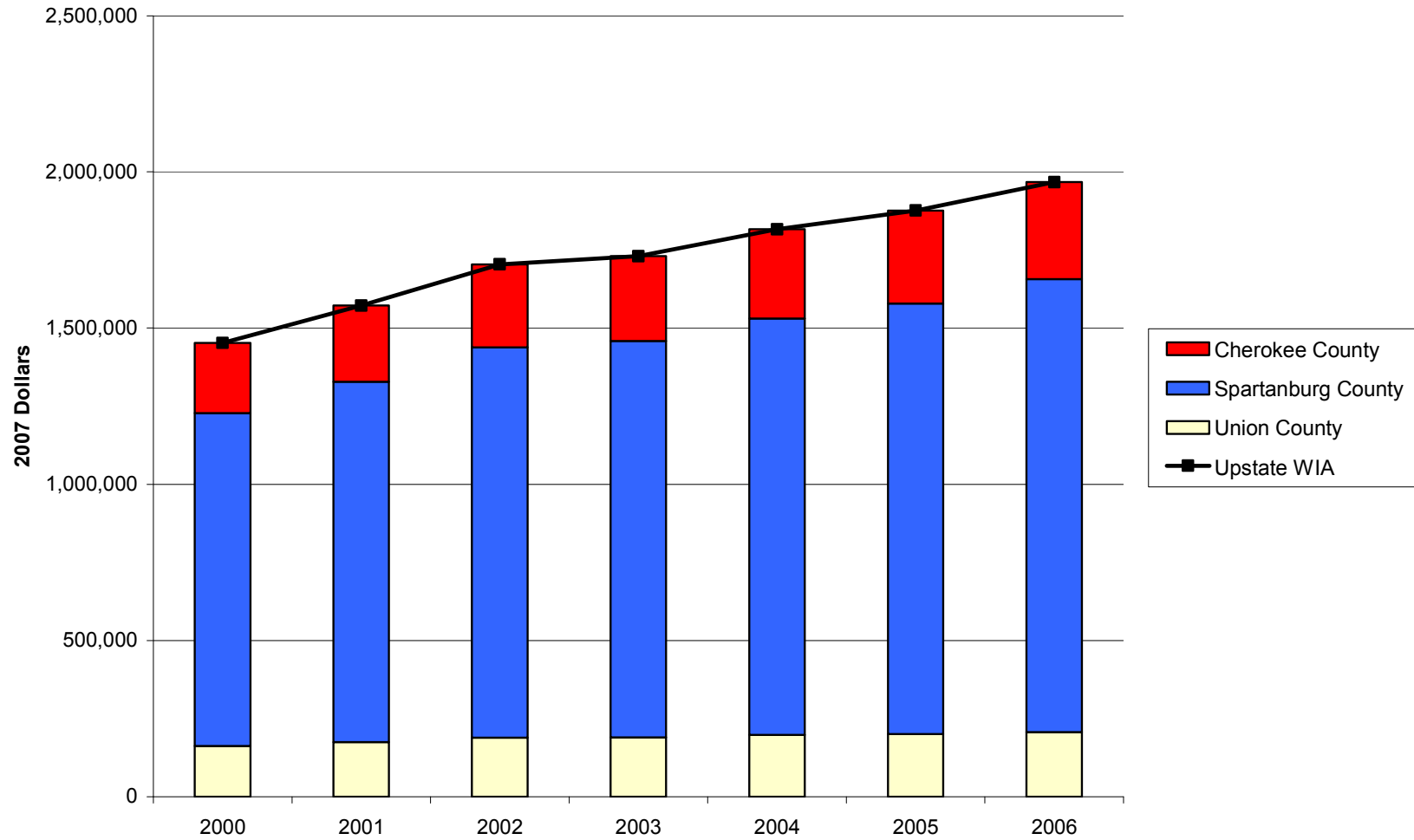
Median Household Income in the Upstate WIA Region and Component Counties, 2000-2005

Source: U.S. Census Bureau, Small Area Income and Poverty Estimates



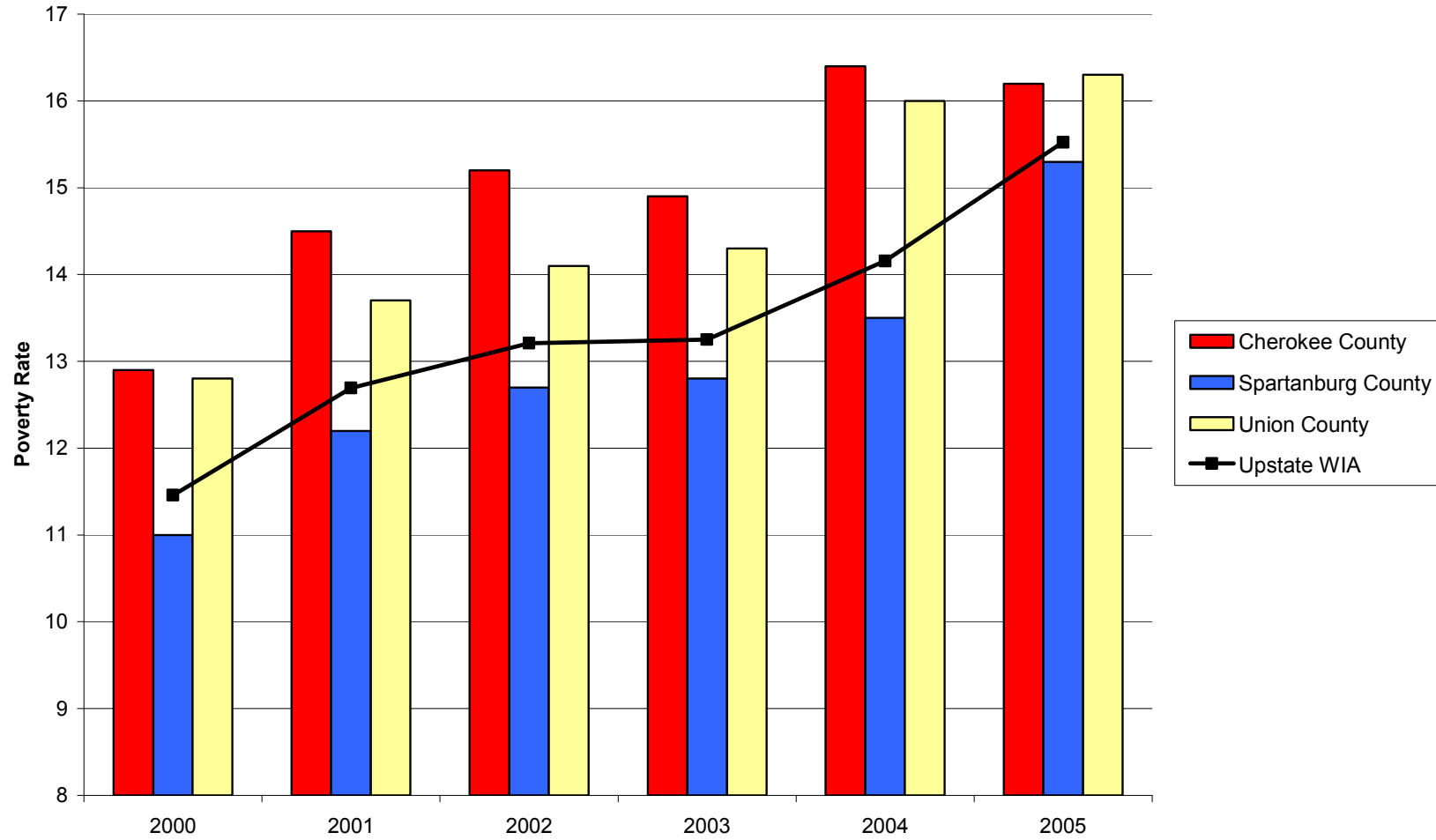
Transfer Payments in the Upstate WIA Region and Component Counties, 2000-2006

Source: Bureau of Economic Analysis, Regional Economic Information System (REIS): Table CA35



Poverty Rates in the Upstate WIA Region and Component Counties, 2000-2005

Source: U.S. Census Bureau, Small Area Income and Poverty Estimates



Patents per 10,000 Employees in the Upstate WIA Region and Component Counties, 2000-2007

Source: United States Patent and Trademark Office, Patent Electronic Business Center

