

**Overview of Economic Trends in South Carolina's  
Workforce Investment Areas,  
2006-2007**

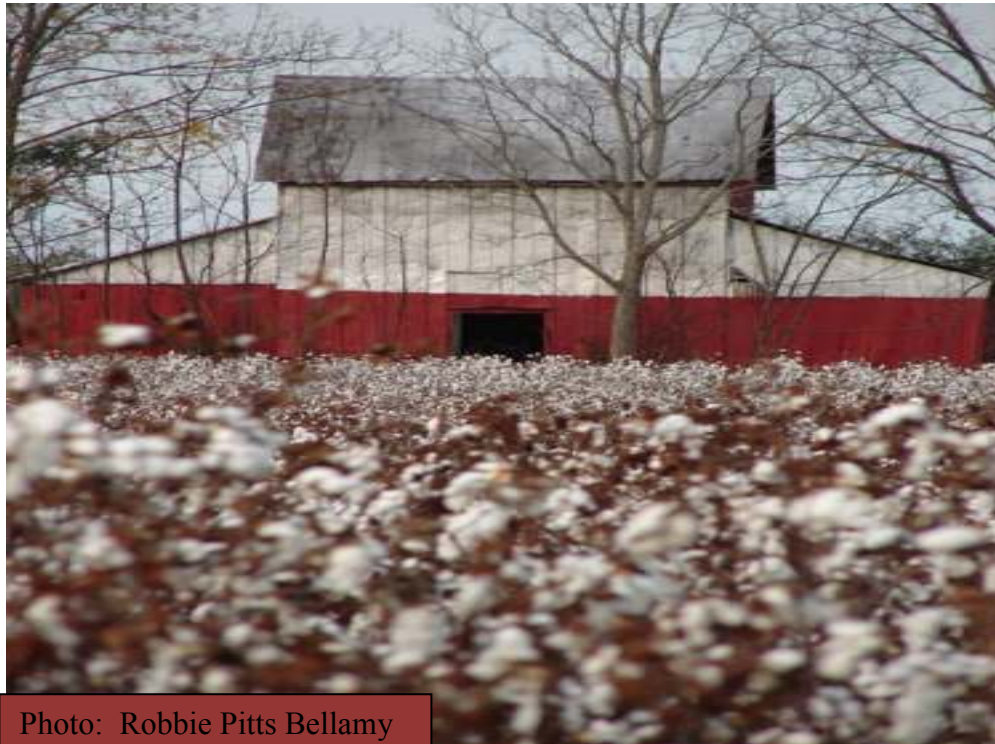


Photo: Robbie Pitts Bellamy

by

**Daniel Eades**  
**Research Associate**

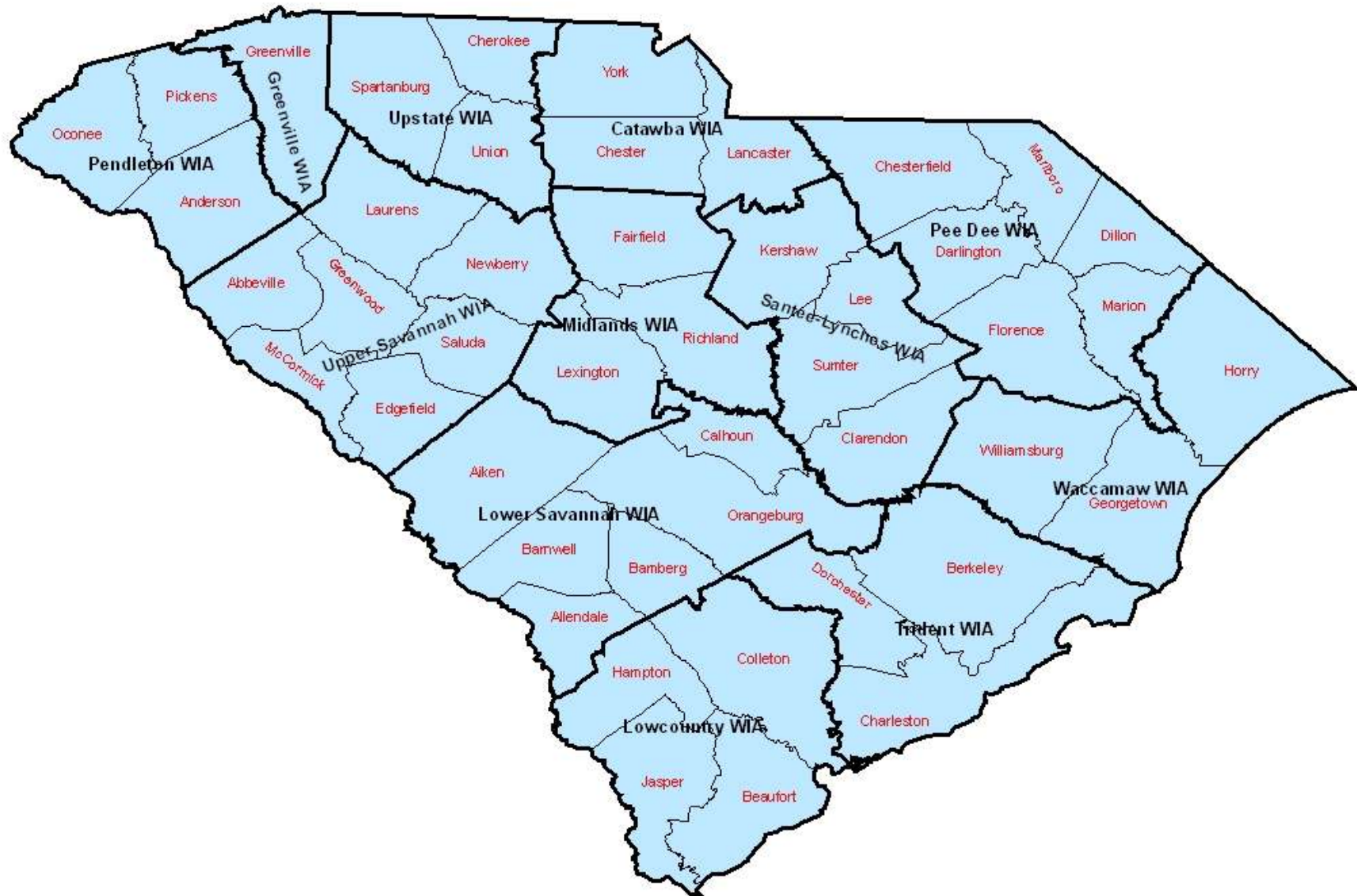
**UCED is a University Center Program of  
The U.S. Department of Commerce  
Economic Development Administration (EDA)**



***EDA University Center for Economic Development  
Department of Applied Economics and Statistics  
Clemson University, Clemson, South Carolina  
[www.clemson.edu/uced](http://www.clemson.edu/uced)***



# SOUTH CAROLINA WORKFORCE INVESTMENT AREAS



## **Indicator Definitions and Notes:**

### **Section A. Establishments, Employment, and Unemployment Trends**

#### **Private Establishments, Employment, and Manufacturing Employment**

Data for *private establishments, employment, and manufacturing employment* are taken from the Bureau of Labor Statistics' (BLS) Quarterly Census of Employment and Wages (QCEW) program. The QCEW program produces a comprehensive tabulation of employment and wage information for workers covered by State unemployment insurance (UI) laws and Federal workers covered by the Unemployment Compensation for Federal Employees (UCFE) program (<http://www.bls.gov/cew/cewover.htm>).

The BLS defines an *establishment* as: The physical location of a certain economic activity--for example, a factory, mine, store, or office. A single establishment generally produces a single good or provides a single service. An enterprise (a private firm, government, or nonprofit organization) can consist of a single establishment or multiple establishments. All establishments in an enterprise may be classified in one industry (e.g., a chain), or they may be classified in different industries (e.g., a conglomerate).

Under the QCEW program *employment* represents the number of covered workers who worked during, or received pay for, the pay period including the 12th of the month. Estimates in this report represent the average employment for all four quarters of data published by the BLS.

Excluded in the BLS employment definition are members of the armed forces, the self-employed, proprietors, domestic workers, unpaid family workers, and railroad workers covered by the railroad Unemployment Insurance system. BLS employment estimates will likely differ from other government estimates because they measure the number of employed persons, not the number of jobs.

(<http://www.labormarketinfo.edd.ca.gov/cgi/databrowsing/?PageID=176>)

*Manufacturing employment* is defined by the associated NAICS codes. The Manufacturing NAICS sector comprises establishments engaged in the mechanical, physical, or chemical transformation of materials, substances, or components into new products

(<http://www.bea.gov/bea/regional/reis/>).

#### **Unemployment and Unemployment Rate**

Unemployment and unemployment rates are taken from the BLS Local Area Unemployment Statistics program (LAUS). Definitions for LAUS data come from the Current Population Survey (CPS), a household survey that is the official measure of the labor force for the nation (<http://www.bls.gov/lau/lauov.htm#overview>).

*Unemployed persons* are defined by the CPS as: Persons aged 16 years and older who had no employment during the reference week, were available for work, except for temporary illness, and had made specific efforts to find employment sometime during the 4-week period ending

with the reference week. Persons who were waiting to be recalled to a job from which they had been laid off need not have been looking for work to be classified as unemployed (<http://www.bls.gov/bls/glossary.htm>).

The *unemployment rate* represents the number unemployed as a percent of the labor force (<http://www.bls.gov/bls/glossary.htm>).

## **Section B. Earnings, Income, and Poverty Estimates**

### **Earnings per Worker, Per Capita Personal Income, and Transfer Payments**

Data for earnings per worker, per capita income, and transfer payments come from the Bureau of Economic Analysis's (BEA), Local Area Personal Income estimates.

*Earnings per worker* are calculated as average wage and salary disbursements, which include monetary payment, the compensation of corporate officers; commissions, tips, and bonuses; and receipts in kind, or pay-in-kind, such as the meals furnished to the employees of restaurants. It reflects the amount of payments disbursed, but not necessarily earned during the year (<http://www.bea.gov/bea/regional/reis/>).

*Per capita personal income* is defined as the income that is received by persons from all sources. It is calculated as the sum of wage and salary disbursements, supplements to wages and salaries, proprietors' income with inventory valuation and capital consumption adjustments, rental income of persons with capital consumption adjustment, personal dividend income, personal interest income, and personal current transfer receipts, less contributions for government social insurance (<http://www.bea.gov/bea/regional/reis/>).

This measure of income is calculated as the personal income of the residents of a given area divided by the resident population of the area. In computing per capita personal income, BEA uses the Census Bureau's annual midyear population estimates.

*Transfer payments* are the payments to individuals from governments and include: retirement and disability insurance benefits, medical benefits, income maintenance benefits, unemployment insurance compensation, veteran's benefits, Federal education and training assistance, and other transfer receipts to individuals from governments (<http://www.bea.gov/bea/regional/reis/>).

### **Median Income and Poverty Rate**

Median income and poverty estimates are taken from the U.S. Census Bureau's Small Area Income and Poverty Estimates (SAIPE).

The Census Bureau uses a set of money income thresholds that vary by family size and composition to determine who is in poverty. If a family's total income is less than the family's threshold, then that family and every individual in it is considered in poverty. The official

poverty thresholds do not vary geographically, but they are updated for inflation using Consumer Price Index (CPI-U). The official poverty definition uses money income before taxes and does not include capital gains or noncash benefits (such as public housing, Medicaid, and food stamps) (<http://www.census.gov/hhes/www/poverty/povdef.html>).

For a detailed description of SAIPE estimation procedure see:  
<http://www.census.gov/hhes/www/saipe/overview.html>

## **Section C. Patents, Small Business Innovation Research (SBIR), and Small Business Technology Transfers (STTR)**

### **Patents**

Patent data was collected from the United States Patent and Trade Office. *Patent counts* represent the number of utility patents (“patents for invention”) issued to South Carolina inventors. Origin of the patent is determined by the county of residence of the first named inventor.

### **SBIR/STTR Awards**

The Small Business Administration’s (SBA) Office of Technology administers the *Small Business Innovation Research* (SBIR) Program and the *Small Business Technology Transfer* (STTR) Program. Both programs are designed to encourage high tech innovation and commercialization through federal funding and public/private partnerships, linking small businesses with government research and development institutions.

Data were collected from the SBA’s Technology Resources Network (Tech-Net) database.  
<http://tech-net.sba.gov/index.cfm>

For further information on the SBIR/STTR programs see:  
<http://www.sba.gov/aboutsba/sbaprograms/sbir/index.htm>

## **A. Overview of Economic Trends in South Carolina's Workforce Investment Areas (WIAs): Establishments and Employment, 2000-2007**

From 2000 to 2007 the number of private establishments in South Carolina grew from 110,221 to 113,254, an increase of 2.8% (Table A.1). The state growth rate was substantially lower than the national rate of 13.5% for the same period. The state and all twelve WIAs reported a decrease in private establishments between 2006 and 2007. The greatest declines were reported in the Lower Savannah (-12.2%), Midlands (-10.7%), Upstate (-10.6%), Pee Dee (-10.4%), Lowcountry (-10.1%), and Trident (-10.0%) WIA regions.

Despite the decline in establishments, employment in the private sector remained stable or increased in the state and in ten of twelve WIA regions between 2006 and 2007. The state (1.9%) and seven WIA regions [Trident (3.7%), Midlands (3.4%), Greenville (2.3%), Upstate (1.7%), Lowcountry (1.5%), Pendleton (1.3%), and Waccamaw (1.3%)] experienced employment growth greater than the national employment growth rate of 1.1% between 2006 and 2007 (Table A.2).

While the total number of employed individuals increased, employment in the manufacturing sector fell across all geographic areas between 2000 and 2007 with the exception of the Trident WIA (0.9%). From 2000 to 2007 the state reported a loss of nearly 85,500 manufacturing jobs, a decrease of 25.5% (Table A.3). National employment in manufacturing fell by 20.1% during the same period. Manufacturing job losses continued in the state between 2006 and 2007. The Pee Dee WIA experienced the largest job losses, over 1,800 jobs lost and a decline of 6.9% of its manufacturing employment. The Lowcountry (-13.4%), Catawba (-8.2%), Santee-Lynches (-4.1%), and Pendleton (-3.4) WIA regions also experienced losses at a rate greater than the state. Despite an overall decline in manufacturing employment, three WIAs [Trident (5.6%), Midlands (0.7%), and Waccamaw (0.2%)] reported increases in manufacturing employment during this period.

Significant losses in manufacturing jobs are a principal cause of the increase in the number of unemployed in South Carolina over the last seven years. Between 2000 and 2007 the total number of unemployed persons in the state increased 76.9% from 70,821 to 125,262 (Table A.4). Recently, however, this trend was reversed. South Carolina experienced an overall decrease in the number of unemployed (-9.3%) between 2006 and 2007. Additionally, all WIAs reported declines in the number of unemployed, and six regions [Pendleton (-15.4%), Upstate (-12.7%), Lower Savannah (-11.8%), Santee-Lynches (-10.6%), Trident (-10.4%), and Pee Dee (-9.7%)] reported relative decreases greater than the state average.

South Carolina's unemployment rate, although lower than the U.S. average in 2000, rose from 3.6% to 5.9% over the period 2000-2007 (Table A.5). Since 2004 the state rate declined from a high of 6.8% in 2004 to 5.9% in 2007; however, this rate remained above the national average of 4.6%. In 2007, the unemployment rates were above the state average in the Pee Dee (7.8%), Catawba (7.0%), Lower Savannah (7.0%), Santee-Lynches (7.0%), Upper Savannah (7.0%), Upstate (6.4%), and Pendleton (6.0%) WIAs. WIAs with the lowest 2007 unemployment rates included Trident (4.6%), Greenville (4.9%), Lowcountry (5.0%), and Midlands (5.1%). All twelve WIAs experienced decreases in their unemployment rates between 2006 and 2007.

Figures A.1 through A.8 provide trend lines in establishment numbers, employment, and unemployment rates for the period 2000-2007. For establishment and employment data the 2000 values for each WIA are normalized to the same starting value of "100" so that relative changes over time among the WIA regions are easily compared.

## A. Establishments and Employment

Geographic Area	Year								Percent Change	
	2000	2001	2002	2003	2004	2005	2006	2007	2000-2007	2006-2007
<b>A.1. Private Establishments</b>										
Catawba WIA	5,634	5,723	6,067	5,829	5,721	6,008	6,564	5,980	6.1%	-8.9%
Greenville WIA	11,811	11,950	12,518	12,201	11,821	12,299	13,148	12,135	2.7%	-7.7%
Lowcountry WIA	6,306	6,519	6,882	6,744	6,651	6,986	7,561	6,798	7.8%	-10.1%
Lower Savannah WIA	5,891	5,895	6,057	5,830	5,695	5,944	6,351	5,576	-5.3%	-12.2%
Midlands WIA	14,910	15,041	15,795	15,189	14,682	15,364	16,478	14,707	-1.4%	-10.7%
Pee Dee WIA	7,121	7,115	7,289	6,904	6,615	6,728	7,047	6,315	-11.3%	-10.4%
Pendleton WIA	7,116	7,108	7,356	7,069	6,936	7,232	7,643	7,002	-1.6%	-8.4%
Santee-Lynches WIA	4,051	4,049	4,171	3,967	3,885	4,043	4,343	3,926	-3.1%	-9.6%
Trident WIA	15,043	15,420	16,294	15,744	15,381	16,361	18,003	16,207	7.7%	-10.0%
Upper Savannah WIA	4,299	4,286	4,410	4,209	4,070	4,188	4,400	4,003	-6.9%	-9.0%
Upstate WIA	7,892	7,866	8,099	7,795	7,465	7,703	8,093	7,239	-8.3%	-10.6%
Waccamaw WIA	10,146	10,221	10,699	10,362	10,209	10,799	11,926	10,803	6.5%	-9.4%
<b>South Carolina</b>	110,221	111,880	115,559	111,385	108,929	115,194	125,222	113,254	2.8%	-9.6%
<b>United States</b>	7,646,318	7,724,965	7,839,903	7,963,340	8,093,142	8,294,662	8,505,496	8,680,218	13.5%	2.1%

Source: Quarterly Census of Employment and Wages (2000-2006). U.S. Department of Labor, Bureau of Labor Statistics. Available at: <http://www.bls.gov/cew/>

## A. Establishments and Employment

Geographic Area	Year								Percent Change	
<b>A.2. Employment</b>										
	<b>2000</b>	<b>2001</b>	<b>2002</b>	<b>2003</b>	<b>2004</b>	<b>2005</b>	<b>2006</b>	<b>2007</b>	<b>2000-2007</b>	<b>2006-2007</b>
Catawba WIA	77,476	75,178	74,816	75,529	78,511	80,231	83,158	83,058	7.2%	-0.1%
Greenville WIA	208,351	201,959	195,368	196,613	196,899	200,653	205,306	210,099	0.8%	2.3%
Lowcountry WIA	61,793	61,729	63,248	64,382	66,550	68,617	71,581	72,628	17.5%	1.5%
Lower Savannah WIA	92,854	91,213	90,586	89,252	89,509	87,984	88,367	89,042	-4.1%	0.8%
Midlands WIA	223,084	224,587	224,332	224,758	229,545	229,882	238,837	247,049	10.7%	3.4%
Pee Dee WIA	107,676	104,497	104,014	101,864	100,900	97,392	98,731	98,762	-8.3%	0.0%
Pendleton WIA	104,154	100,987	97,813	95,000	94,887	93,826	94,032	95,209	-8.6%	1.3%
Santee-Lynches WIA	57,358	54,591	54,086	54,522	54,866	54,082	53,397	53,518	-6.7%	0.2%
Trident WIA	191,824	191,581	194,911	198,940	205,676	211,687	218,573	226,638	18.1%	3.7%
Upper Savannah WIA	69,100	66,820	63,968	62,463	62,937	63,358	63,049	62,714	-9.2%	-0.5%
Upstate WIA	130,359	126,197	123,075	121,908	120,952	120,696	121,781	123,867	-5.0%	1.7%
Waccamaw WIA	112,721	110,229	111,801	113,620	118,190	121,765	128,072	129,728	15.1%	1.3%
<b>South Carolina</b>	<b>1,507,621</b>	<b>1,477,097</b>	<b>1,454,665</b>	<b>1,454,329</b>	<b>1,476,668</b>	<b>1,500,676</b>	<b>1,534,903</b>	<b>1,563,381</b>	<b>3.7%</b>	<b>1.9%</b>
<b>United States</b>	<b>110,023,983</b>	<b>109,304,802</b>	<b>107,577,281</b>	<b>107,065,553</b>	<b>108,490,066</b>	<b>110,611,016</b>	<b>112,718,858</b>	<b>114,014,680</b>	<b>3.6%</b>	<b>1.1%</b>

Source: Quarterly Census of Employment and Wages (2000-2006). U.S. Department of Labor, Bureau of Labor Statistics. Available at: <http://www.bls.gov/cew/>

## A.3. Manufacturing Employment

	<b>2000</b>	<b>2001</b>	<b>2002</b>	<b>2003</b>	<b>2004</b>	<b>2005</b>	<b>2006</b>	<b>2007</b>	<b>2000-2007</b>	<b>2006-2007</b>
Catawba WIA	23,222	21,425	20,171	18,685	18,115	18,642	18,157	16,661	-28.3%	-8.2%
Greenville WIA	44,268	42,908	38,429	37,360	35,286	34,331	30,955	30,600	-30.9%	-1.1%
Lowcountry WIA	4,461	4,041	4,014	3,858	3,944	4,005	4,325	3,744	-16.1%	-13.4%
Lower Savannah WIA	25,630	23,922	22,623	21,917	21,610	21,286	20,311	20,274	-20.9%	-0.2%
Midlands WIA	28,610	27,388	26,390	24,828	23,800	24,061	23,834	24,002	-16.1%	0.7%
Pee Dee WIA	35,917	33,622	31,745	29,961	28,819	27,464	26,886	25,037	-30.3%	-6.9%
Pendleton WIA	37,879	34,351	31,027	28,296	27,542	27,078	26,205	25,311	-33.2%	-3.4%
Santee-Lynches WIA	19,451	17,736	16,547	16,492	15,781	14,771	13,811	13,244	-31.9%	-4.1%
Trident WIA	22,212	21,690	20,830	20,501	20,817	21,154	21,224	22,414	0.9%	5.6%
Upper Savannah WIA	29,573	27,685	24,658	22,638	22,637	22,265	22,084	22,018	-25.5%	-0.3%
Upstate WIA	49,088	46,172	42,368	41,196	39,361	37,998	36,100	35,933	-26.8%	-0.5%
Waccamaw WIA	12,899	11,094	9,802	8,778	8,640	8,498	8,634	8,651	-32.9%	0.2%
<b>South Carolina</b>	<b>335,118</b>	<b>313,735</b>	<b>290,107</b>	<b>276,080</b>	<b>267,426</b>	<b>262,714</b>	<b>253,811</b>	<b>249,647</b>	<b>-25.5%</b>	<b>-1.6%</b>
<b>United States</b>	<b>17,314,423</b>	<b>16,386,001</b>	<b>15,209,192</b>	<b>14,459,712</b>	<b>14,257,380</b>	<b>14,190,394</b>	<b>14,110,663</b>	<b>13,834,745</b>	<b>-20.1%</b>	<b>-2.0%</b>

Source: Quarterly Census of Employment and Wages (2000-2006). U.S. Department of Labor, Bureau of Labor Statistics. Available at: <http://www.bls.gov/cew/>

## A. Establishments and Employment

Geographic Area	Year								Percent Change	
<b>A.4. Unemployment</b>										
	<b>2000</b>	<b>2001</b>	<b>2002</b>	<b>2003</b>	<b>2004</b>	<b>2005</b>	<b>2006</b>	<b>2007</b>	<b>2000-2007</b>	<b>2006-2007</b>
Catawba WIA	4,705	7,127	9,399	11,166	10,989	10,367	10,944	10,413	121.3%	-4.9%
Greenville WIA	5,294	7,552	9,693	11,045	12,132	11,568	11,729	10,751	103.1%	-8.3%
Lowcountry WIA	2,848	3,645	4,288	5,151	5,376	5,348	5,257	4,991	75.2%	-5.1%
Lower Savannah WIA	6,192	8,519	8,907	9,843	10,059	10,543	11,259	9,928	60.3%	-11.8%
Midlands WIA	8,872	11,679	13,187	15,923	17,076	17,327	17,555	16,449	85.4%	-6.3%
Pee Dee WIA	7,958	10,701	11,310	13,820	14,277	14,473	13,197	11,911	49.7%	-9.7%
Pendleton WIA	5,388	8,997	10,634	11,995	12,150	12,691	12,300	10,409	93.2%	-15.4%
Santee-Lynches WIA	4,024	5,729	6,330	6,895	7,154	7,877	7,615	6,806	69.1%	-10.6%
Trident WIA	8,409	10,910	12,155	14,652	15,475	15,926	15,985	14,326	70.4%	-10.4%
Upper Savannah WIA	4,578	7,597	9,007	9,346	9,146	9,156	9,081	8,407	83.6%	-7.4%
Upstate WIA	6,321	9,876	12,028	12,933	13,737	13,196	12,377	10,805	70.9%	-12.7%
Waccamaw WIA	6,232	8,480	9,269	10,996	11,368	11,220	10,766	10,066	61.5%	-6.5%
<b>South Carolina</b>	70,821	100,811	116,205	133,767	138,938	139,693	138,061	125,262	76.9%	-9.3%
<b>United States</b>	5,692,000	6,801,000	8,378,000	8,774,000	8,149,000	7,591,000	7,001,000	7,078,000	24.3%	1.1%

Source: Local Area Unemployment Statistics. U.S. Department of Labor, Bureau of Labor Statistics. Available at: <http://www.bls.gov/lau/home.htm>

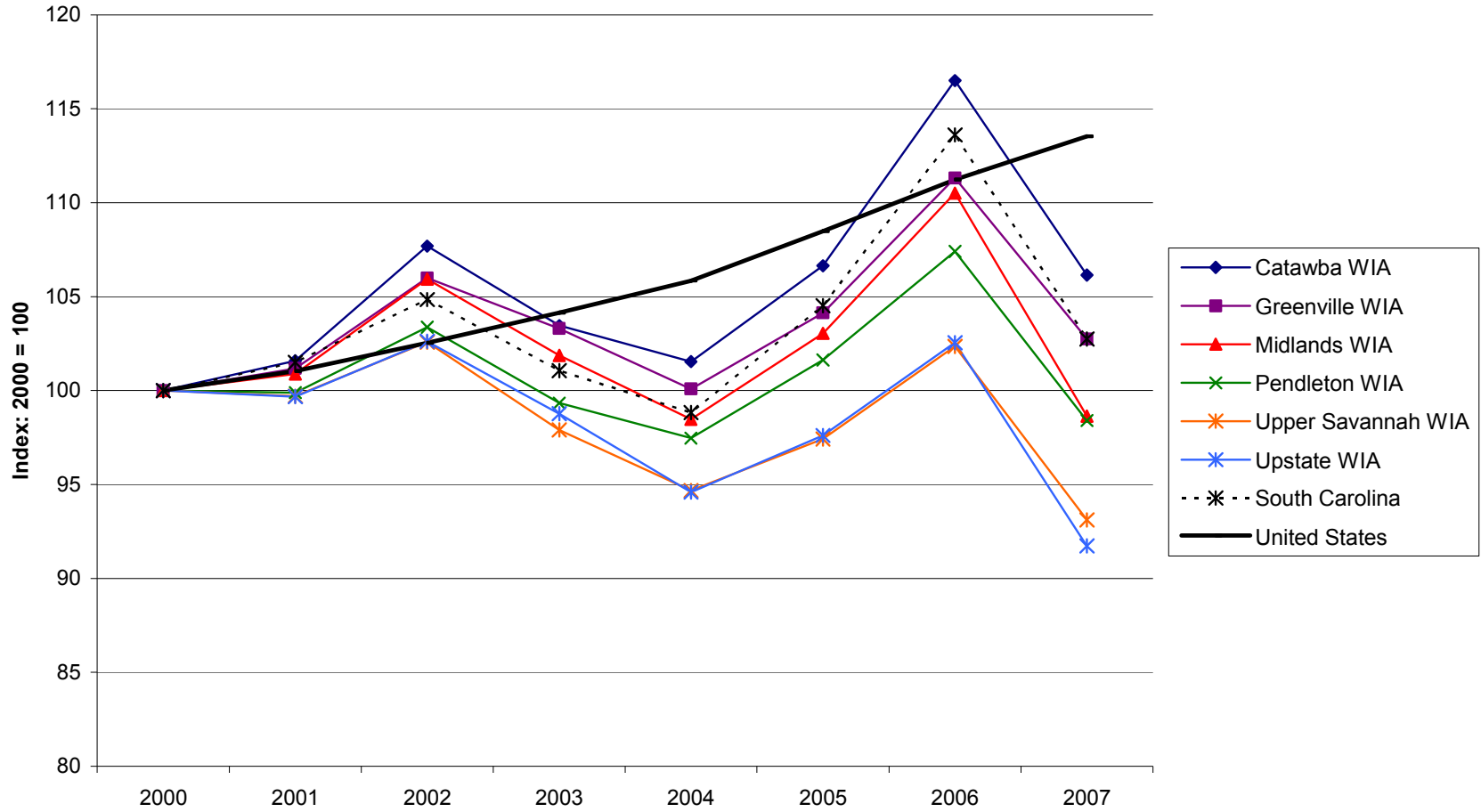
## A.5. Unemployment Rate

	<b>2000</b>	<b>2001</b>	<b>2002</b>	<b>2003</b>	<b>2004</b>	<b>2005</b>	<b>2006</b>	<b>2007</b>	Rate Change	
									<b>2000-2007</b>	<b>2006-2007</b>
Catawba WIA	3.5%	5.3%	6.9%	8.1%	7.9%	7.3%	7.4%	7.0%	3.5%	-0.4%
Greenville WIA	2.6%	3.7%	4.8%	5.5%	5.9%	5.5%	5.4%	4.9%	2.3%	-0.5%
Lowcountry WIA	3.4%	4.3%	4.9%	5.7%	5.8%	5.6%	5.5%	5.0%	1.6%	-0.5%
Lower Savannah WIA	4.5%	6.3%	6.6%	7.1%	7.2%	7.4%	7.9%	7.0%	2.5%	-0.9%
Midlands WIA	3.0%	4.1%	4.6%	5.4%	5.6%	5.6%	5.4%	5.1%	2.0%	-0.4%
Pee Dee WIA	5.2%	7.2%	7.6%	9.1%	9.5%	9.6%	8.6%	7.8%	2.6%	-0.8%
Pendleton WIA	3.1%	5.2%	6.3%	7.0%	7.1%	7.3%	7.0%	6.0%	2.9%	-1.0%
Santee-Lynches WIA	4.3%	6.3%	7.0%	7.4%	7.5%	8.1%	7.8%	7.0%	2.7%	-0.7%
Trident WIA	3.2%	4.2%	4.5%	5.3%	5.4%	5.4%	5.2%	4.6%	1.4%	-0.6%
Upper Savannah WIA	3.8%	6.4%	7.7%	7.9%	7.7%	7.6%	7.5%	7.0%	3.2%	-0.5%
Upstate WIA	3.7%	5.9%	7.2%	7.7%	8.1%	7.8%	7.1%	6.4%	2.6%	-0.8%
Waccamaw WIA	4.3%	5.9%	6.3%	7.1%	7.1%	6.7%	6.2%	5.7%	1.5%	-0.5%
<b>South Carolina</b>	3.6%	5.2%	5.9%	6.7%	6.8%	6.7%	6.5%	5.9%	2.3%	-0.6%
<b>United States</b>	4.0%	4.7%	5.8%	6.0%	5.5%	5.1%	4.6%	4.6%	0.6%	0.0%

Source: Local Area Unemployment Statistics. U.S. Department of Labor, Bureau of Labor Statistics. Available at: <http://www.bls.gov/lau/home.htm>

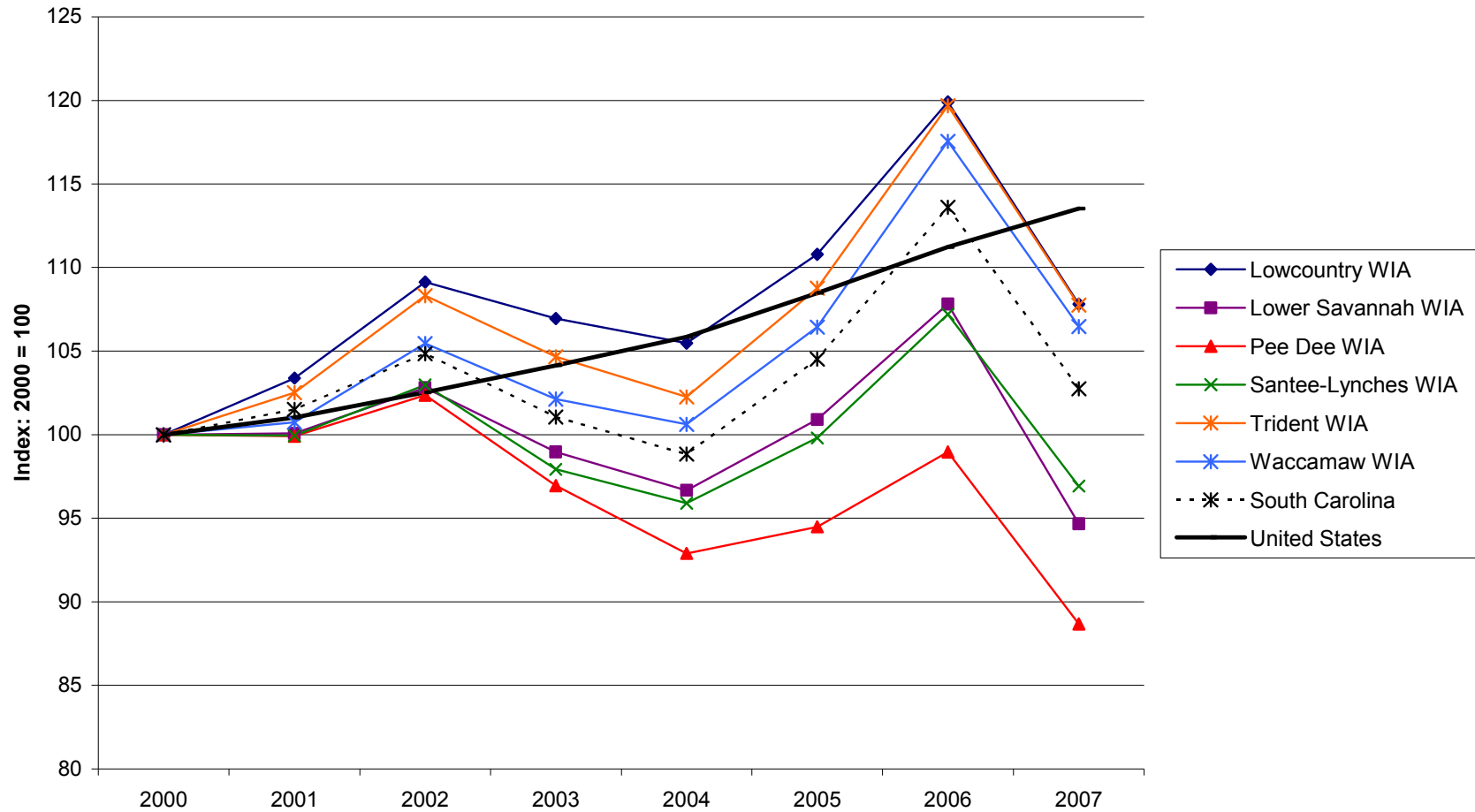
**Figure A.1. Private Establishment Trends in Workforce Investment Areas, South Carolina, and United States, 2000-2007**

Source: Quarterly Census of Employment and Wages (2000-2007). U.S. Department of Labor, Bureau of Labor Statistics



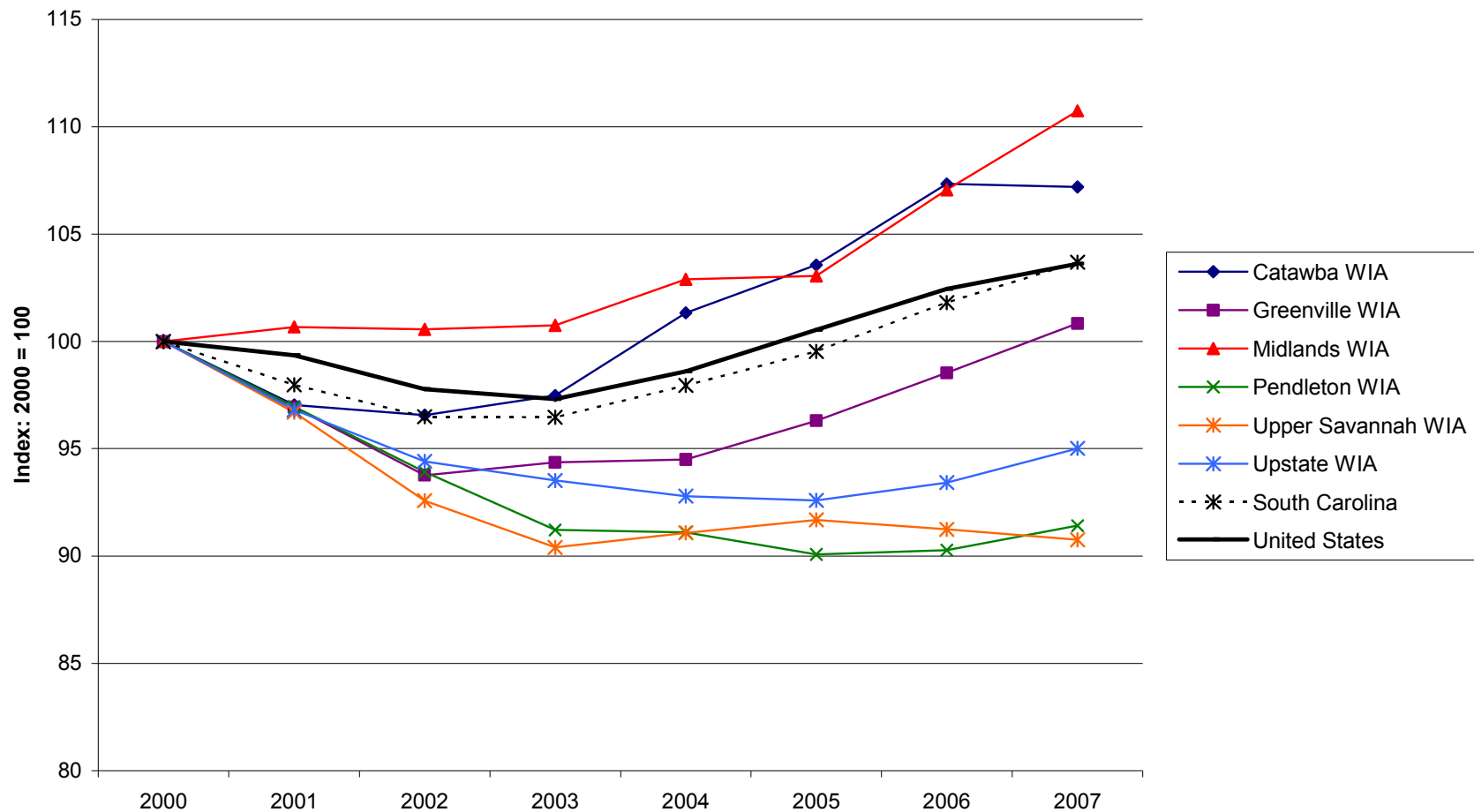
**Figure A.2. Private Establishment Trends in Workforce Investment Areas,  
South Carolina, and United States, 2000-2007**

Source: Quarterly Census of Employment and Wages (2000-2007). U.S. Department of Labor, Bureau of Labor Statistics



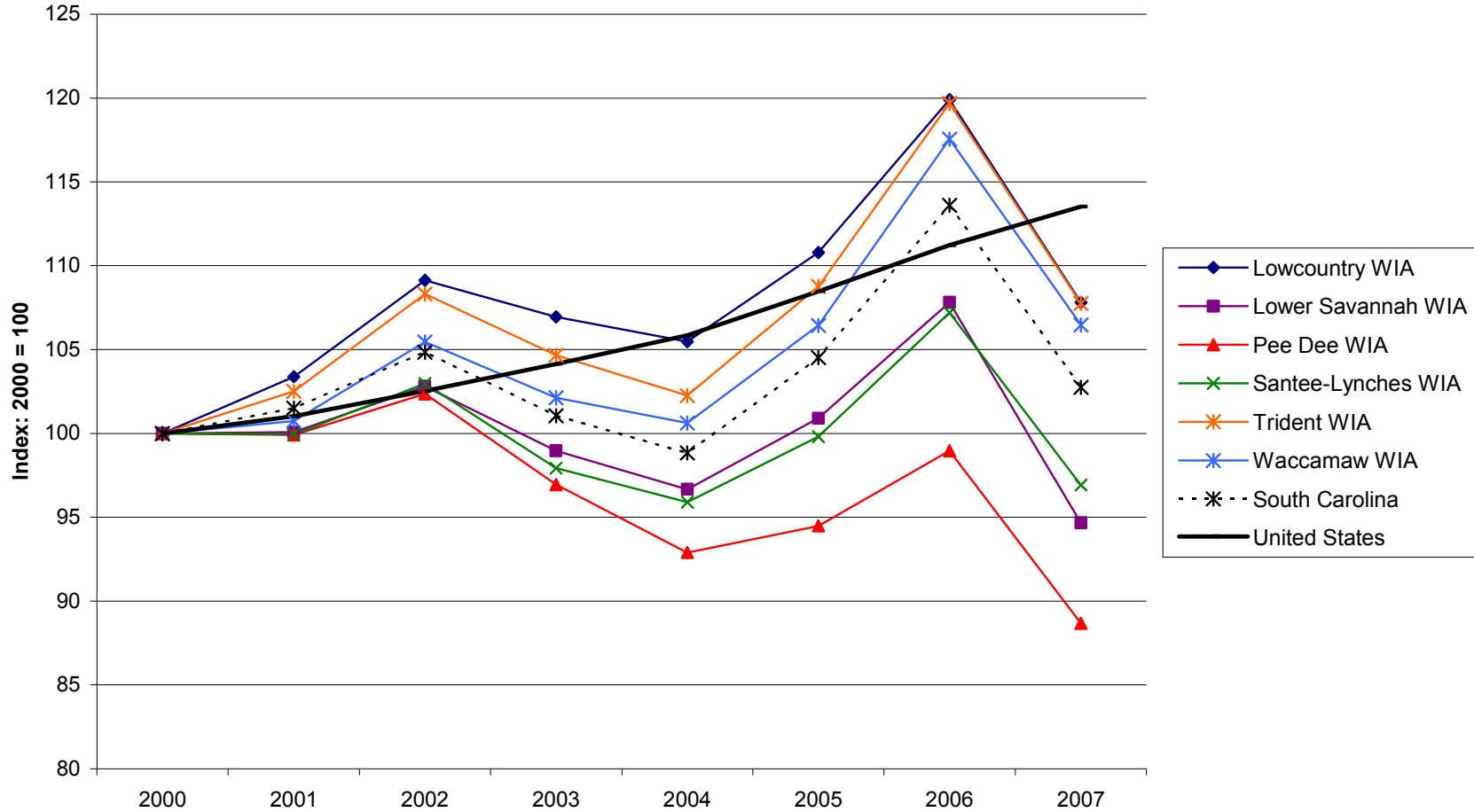
**Figure A.3. Private Employment Trends in Workforce Investment Areas,  
South Carolina, and United States, 2000-2007**

Source: Quarterly Census of Employment and Wages (2000-2007). U.S. Department of Labor, Bureau of Labor Statistics



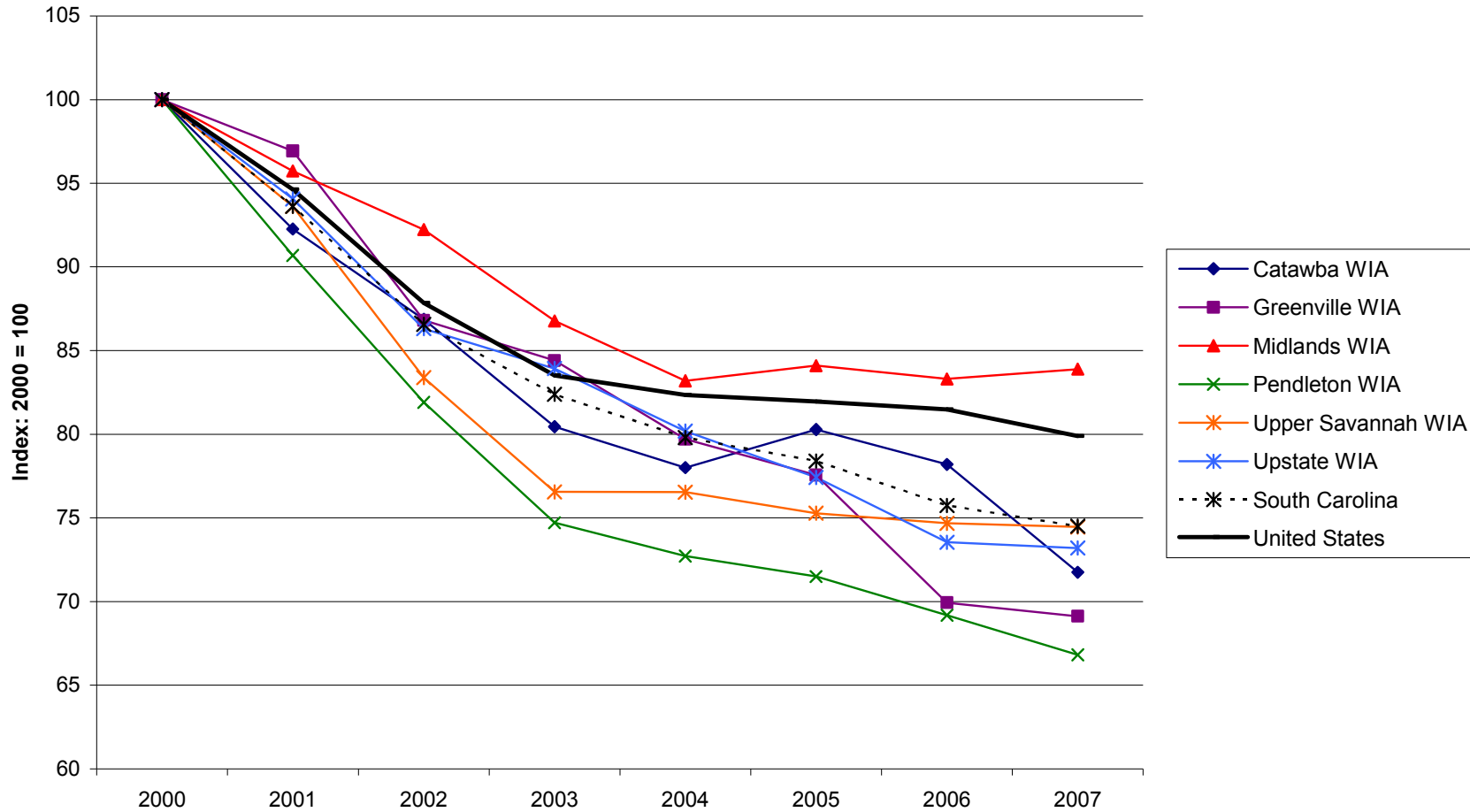
**Figure A.4. Private Employment Trends in Workforce Investment Areas, South Carolina, and United States, 2000-2007**

Source: Quarterly Census of Employment and Wages (2000-2007). U.S. Department of Labor, Bureau of Labor Statistics



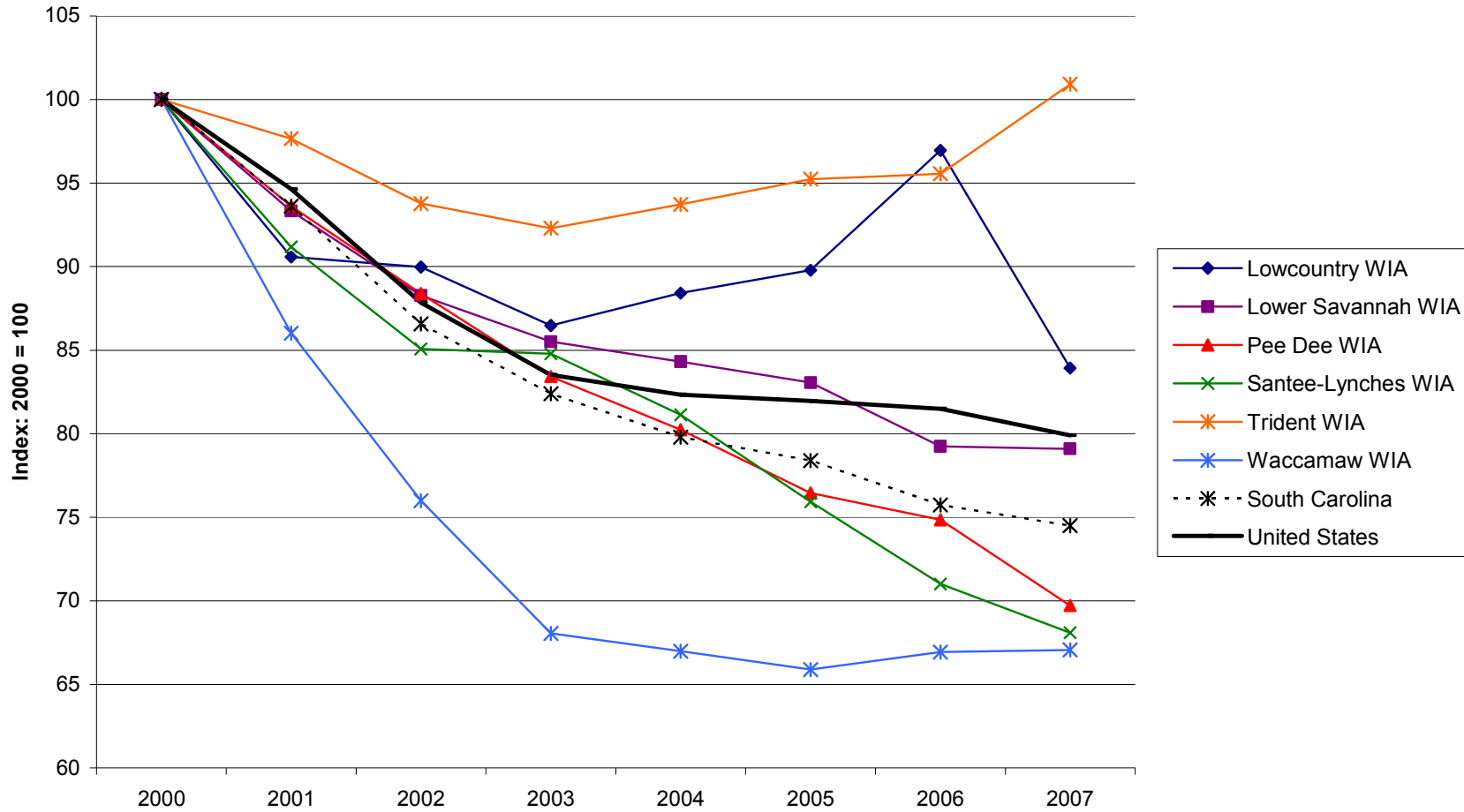
**Figure A.5. Manufacturing Employment Trends in Workforce Investment Areas, South Carolina, and United States, 2000-2007**

Source: Quarterly Census of Employment and Wages (2000-2007). U.S. Department of Labor, Bureau of Labor Statistics



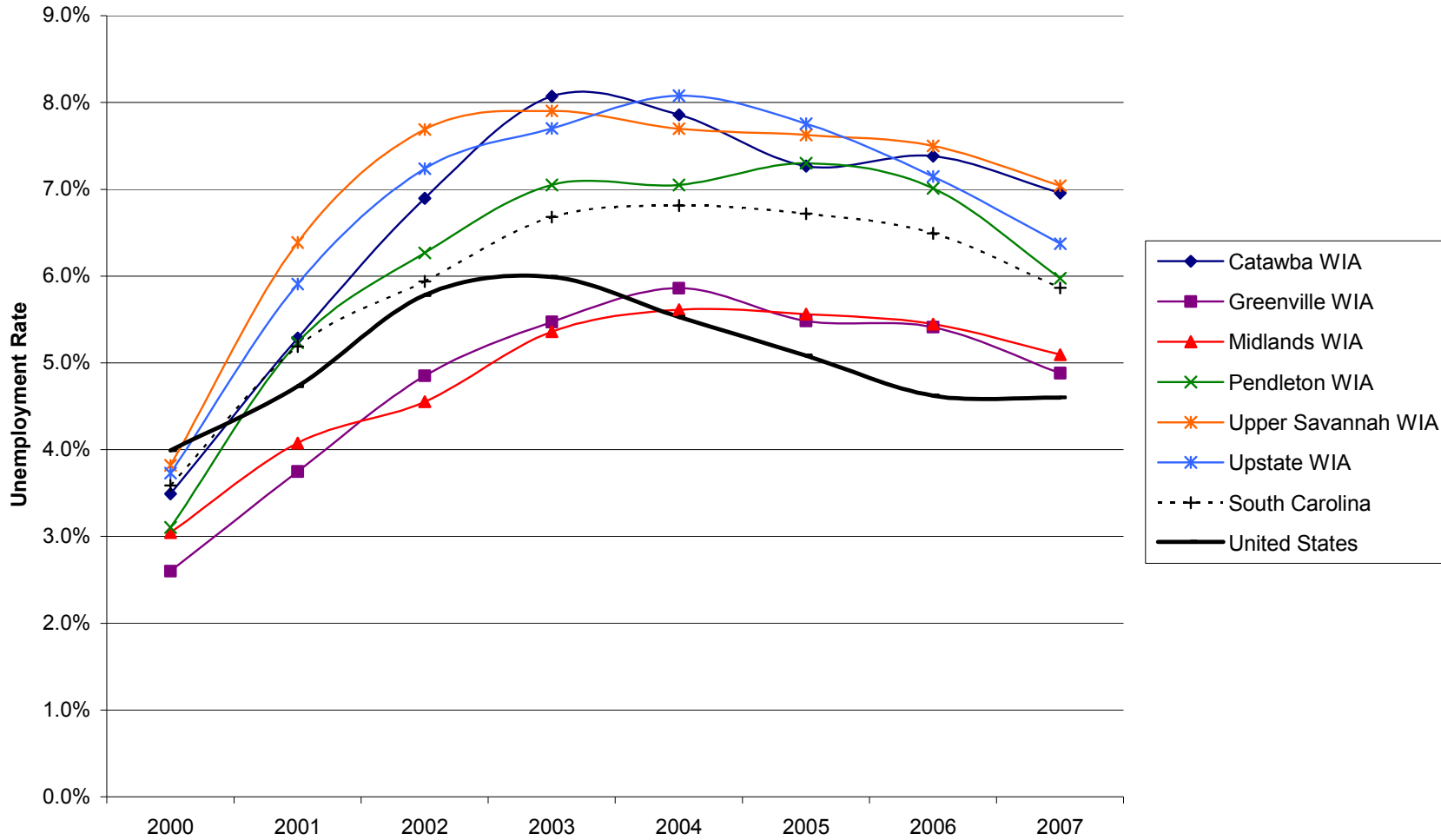
**Figure A.6. Manufacturing Employment Trends in Workforce Investment Areas, South Carolina, and United States, 2000-2007**

Source: Quarterly Census of Employment and Wages (2000-2007). U.S. Department of Labor, Bureau of Labor Statistics



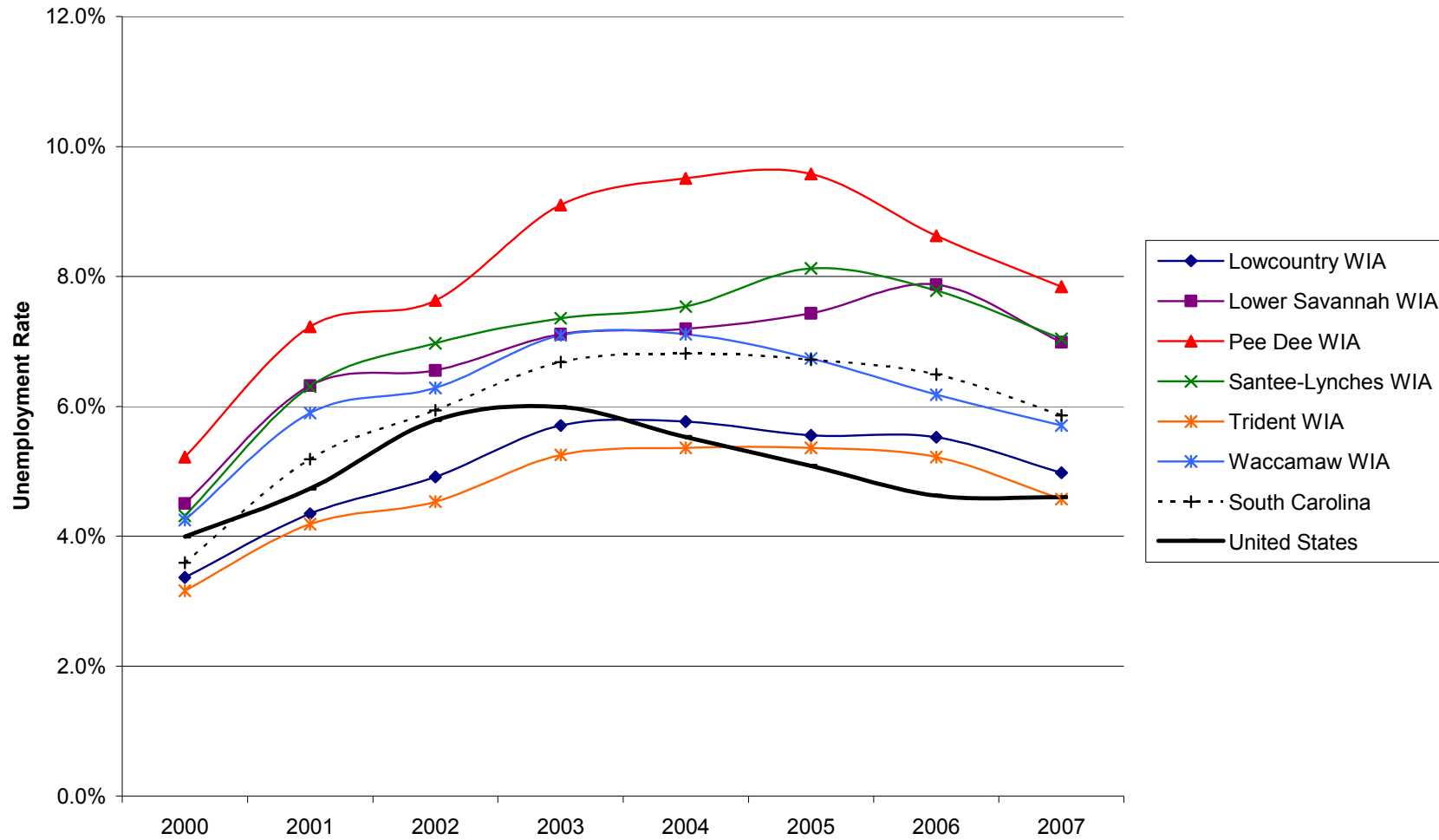
**Figure A.7. Unemployment Rates in SC Workforce Investment Areas, South Carolina, and United States, 2000-2007**

Source: Local Area Unemployment Statistics. U.S. Department of Labor, Bureau of Labor Statistics



**Figure A.8. Unemployment Rates in SC Workforce Investment Areas, South Carolina, and United States, 2000-2007**

Source: Local Area Unemployment Statistics. U.S. Department of Labor. Bureau of Labor Statistics



## **B. Overview of Economic Trends in South Carolina's Workforce Investment Areas (WIAs): Earnings and Income, 2000-2006**

South Carolina's workforce experienced a 4.7% growth in real earnings per worker from 2000 to 2006 (\$33,367 to \$34,925). Growth at the state level was greater than the national growth rate of 3.3%; however, 2006 state earnings per worker remained nearly \$10,000 below the national average of \$43,187 (Table B.1). The WIAs with the highest earnings per worker in 2006 included Greenville (\$37,906), Midlands (\$37,148), Tident (\$36,643), Upstate (\$36,592), and Lower Savannah (\$36,224). Four of the WIA regions experienced declines in real earnings per worker from 2005 to 2006 (Catawba, Greenville, Lower Savannah, and Upper Savannah). The largest relative increases were reported for the Midlands (1.4%), Lowcountry (1.3%), and Santee-Lynches (1.3%) regions.

Increases in real earnings per worker translated into increased per capita incomes. The state real per capita income grew 4.1% from \$29,407 in 2000 to \$30,615 in 2005 (Table B.2). Per capita income for the nation grew 5.1% during the same period. Between 2005 and 2006 real per capita income in the state increased 1.3% to \$30,615. Six of the twelve WIAs (Lowcountry, Lower Savannah, Midlands, Pee Dee, Santee-Lynches, and Upper Savannah) increased per capita incomes a rate equal to or greater than the state increase; however, only the Pee Dee WIA (2.3%) was able to match the U.S. growth rate of 2.3%. The highest per capita incomes for 2006 were reported in the Greenville (\$34,413), Lowcountry (\$36,501), Midlands (\$33,990), and Trident (\$33,164) WIAs. Per capita income for the state and all COG regions remained below the national average of \$37,760 in 2006.

Real median household incomes fell in the state and in the nation between 2000 and 2005, although real median income in the state declined at a faster rate (-6.6%) than in the nation (-2.9%) (Table B.3). The highest real median household incomes in 2005 were reported in the Trident (\$46,932), Midlands (\$46,811), Greenville (\$45,348), Lowcountry (\$45,242), Catawba (\$45,139), and Pendleton (\$41,988) WIAs; however, none of the WIAs had median household incomes greater than the national average of \$49,093. The most recent year for which data are available (2004-2005) was a period of declining real median household incomes at the state level (-3.2%). Despite the decline in state-level household incomes, five WIAs (Lower Savannah, Midlands, Pee Dee, Trident, and Upper Savannah) maintained or increased their real median household incomes in 2004-2005.

Transfer payments in South Carolina and most of the WIA regions grew at a more rapid rate between 2005 and 2006 than the national average of 3.6%; continuing the trend observed between 2000 and 2006 (Table B.4). The state's growth rate in transfer payments during the 2005 to 2006 period was 5%, and four WIA regions experienced growth rates greater than the state average: Lowcountry (7.2%), Catawba (6.6%), Greenville (6.4%), and Waccamaw (5.9%). Only the Santee-Lynches (3.6%) WIA reported an increase in transfer payments at or below the national and state rates.

South Carolina's poverty rate (15.6%) in 2005 was higher than the national rate of 13.3%, and all WIA regions reported poverty rates greater than the national rate (Table B.5). The highest poverty rates were observed in the Pee Dee (20.8%), Lower Savannah (19.7%), and Santee-Lynches (18.5%) regions. Eight of the twelve WIAs reported increases in poverty rates greater than or equal to the national average of 0.6% between 2004 and 2005. Only the Greenville (-0.1) and Midlands (-0.2) WIAs reported a rate decrease over the same period.

Figures B.1 through B.8 provide trend lines in earnings and incomes, transfer payments, and poverty rates for the period 2000-2005/2006.

### B. Earnings and Income

Geographic Area	Year							Percent Change	
<b>B.1. Earnings per Worker*</b>									
	<b>2000</b>	<b>2001</b>	<b>2002</b>	<b>2003</b>	<b>2004</b>	<b>2005</b>	<b>2006</b>	<b>2000-2006</b>	<b>2005-2006</b>
Catawba WIA	33,308	33,829	33,889	33,671	34,405	35,062	34,830	4.6%	-0.7%
Greenville WIA	37,476	37,957	38,194	37,991	38,063	37,931	37,906	1.1%	-0.1%
Lowcountry WIA	30,754	31,318	30,977	31,502	32,313	32,911	33,325	8.4%	1.3%
Lower Savannah WIA	36,040	35,232	36,102	36,196	36,617	36,424	36,224	0.5%	-0.5%
Midlands WIA	34,787	34,731	35,257	35,583	36,499	36,620	37,148	6.8%	1.4%
Pee Dee WIA	31,711	32,071	32,419	32,488	32,747	32,606	32,823	3.5%	0.7%
Pendleton WIA	31,253	31,460	31,426	31,614	31,777	31,494	31,665	1.3%	0.5%
Santee-Lynches WIA	29,217	29,233	30,027	30,449	30,753	30,764	31,162	6.7%	1.3%
Trident WIA	33,304	34,168	34,941	35,274	35,654	36,301	36,643	10.0%	0.9%
Upper Savannah WIA	30,848	30,408	30,355	30,470	30,672	30,340	30,321	-1.7%	-0.1%
Upstate WIA	35,192	35,586	36,262	36,075	36,762	36,224	36,592	4.0%	1.0%
Waccamaw WIA	27,977	28,356	28,825	29,175	29,259	29,366	29,613	5.9%	0.8%
<b>South Carolina</b>	<b>33,367</b>	<b>33,626</b>	<b>34,027</b>	<b>34,183</b>	<b>34,617</b>	<b>34,694</b>	<b>34,925</b>	<b>4.7%</b>	<b>0.7%</b>
<b>United States</b>	<b>41,803</b>	<b>41,659</b>	<b>41,664</b>	<b>41,885</b>	<b>42,599</b>	<b>42,649</b>	<b>43,187</b>	<b>3.3%</b>	<b>1.3%</b>

\*Dollar estimates adjusted to 2007 dollars

Source: Bureau of Economic Analysis, Regional Economic Information System (REIS): TableCA30 Available at: <http://www.bea.gov/bea/regional/reis>

## B. Earnings and Income

Geographic Area	Year							Percent Change	
<b>B.2. Per Capita Personal Income*</b>									
	<b>2000</b>	<b>2001</b>	<b>2002</b>	<b>2003</b>	<b>2004</b>	<b>2005</b>	<b>2006</b>	<b>2000-2006</b>	<b>2005-2006</b>
Catawba WIA	28,781	28,396	28,712	28,413	28,864	29,470	29,491	2.5%	0.1%
Greenville WIA	35,746	34,263	33,707	33,309	33,674	34,177	34,413	-3.7%	0.7%
Lowcountry WIA	32,440	33,174	32,649	32,865	34,609	35,735	36,501	12.5%	2.1%
Lower Savannah WIA	26,752	26,960	27,181	27,180	27,511	27,718	28,170	5.3%	1.6%
Midlands WIA	33,113	32,440	32,427	32,133	32,709	33,370	33,990	2.6%	1.9%
Pee Dee WIA	25,456	25,725	25,710	26,009	26,443	26,481	27,077	6.4%	2.3%
Pendleton WIA	27,935	28,278	28,199	27,994	28,009	28,082	28,331	1.4%	0.9%
Santee-Lynches WIA	24,716	24,786	25,161	25,456	26,261	26,414	26,976	9.1%	2.1%
Trident WIA	30,454	30,517	30,777	30,785	31,571	32,939	33,164	8.9%	0.7%
Upper Savannah WIA	25,508	25,436	24,782	24,540	25,356	25,560	26,031	2.1%	1.8%
Upstate WIA	28,096	27,729	27,922	27,522	27,654	27,863	28,104	0.0%	0.9%
Waccamaw WIA	27,686	27,650	27,481	27,732	28,044	28,428	28,734	3.8%	1.1%
<b>South Carolina</b>	29,407	29,239	29,215	29,132	29,679	30,215	30,615	4.1%	1.3%
<b>United States</b>	35,936	35,795	35,522	35,501	36,357	36,900	37,760	5.1%	2.3%

\*Dollar estimates adjusted to 2007 dollars

Source: Bureau of Economic Analysis, Regional Economic Information System (REIS): TableCA1-3 Available at: <http://www.bea.gov/beat/regional/reis>

## B.3. Median Income\*

	<b>2000</b>	<b>2001</b>	<b>2002</b>	<b>2003</b>	<b>2004</b>	<b>2005</b>	<b>2006</b>	<b>2000-2005</b>	<b>2004-2005</b>
Catawba WIA	48,902	46,547	46,207	46,300	46,796	45,139	--	-7.7%	-3.5%
Greenville WIA	51,226	49,167	48,013	47,419	46,582	45,348	--	-11.5%	-2.7%
Lowcountry WIA	48,005	45,460	44,896	44,896	45,423	45,242	--	-5.8%	-0.4%
Lower Savannah WIA	40,791	38,568	38,073	37,992	37,714	38,167	--	-6.4%	1.2%
Midlands WIA	51,118	48,710	47,678	47,097	46,339	46,811	--	-8.4%	1.0%
Pee Dee WIA	37,527	35,563	34,971	35,266	35,021	35,012	--	-6.7%	0.0%
Pendleton WIA	45,532	43,356	42,758	43,033	42,451	41,988	--	-7.8%	-1.1%
Santee-Lynches WIA	40,078	37,856	37,195	37,501	37,513	36,522	--	-8.9%	-2.6%
Trident WIA	48,674	46,125	45,647	46,034	46,120	46,932	--	-3.6%	1.8%
Upper Savannah WIA	40,910	38,515	37,664	37,223	37,463	37,877	--	-7.4%	1.1%
Upstate WIA	44,977	42,169	41,378	41,644	41,894	39,623	--	-11.9%	-5.4%
Waccamaw WIA	42,120	39,345	38,544	38,893	39,134	38,773	--	-7.9%	-0.9%
<b>South Carolina</b>	44,892	43,263	43,153	42,824	43,306	41,911	--	-6.6%	-3.2%
<b>United States</b>	50,559	49,439	48,878	48,813	48,662	49,093	--	-2.9%	0.9%

\*Dollar estimates adjusted to 2007 dollars

Source: U.S. Census Bureau, Small Area Income and Poverty Estimates. Available at: <http://www.census.gov/hhes/www/saie/tables.html>

## B. Earnings and Income

Geographic Area	Year							Percent Change	
<b>B.4. Transfer Payments (x\$1,000)*</b>									
	<b>2000</b>	<b>2001</b>	<b>2002</b>	<b>2003</b>	<b>2004</b>	<b>2005</b>	<b>2006</b>	<b>2000-2006</b>	<b>2005-2006</b>
Catawba WIA	1,031,877	1,125,331	1,236,980	1,278,117	1,344,674	1,397,358	1,489,572	44.4%	6.6%
Greenville WIA	1,462,403	1,576,844	1,705,742	1,742,921	1,864,359	1,931,037	2,053,933	40.4%	6.4%
Lowcountry WIA	899,644	971,186	1,052,013	1,099,237	1,165,229	1,222,080	1,309,481	45.6%	7.2%
Lower Savannah WIA	1,442,959	1,548,705	1,655,894	1,688,704	1,772,613	1,824,872	1,913,786	32.6%	4.9%
Midlands WIA	2,132,786	2,293,101	2,480,616	2,536,970	2,703,710	2,797,066	2,934,982	37.6%	4.9%
Pee Dee WIA	1,727,472	1,843,055	1,955,853	1,996,199	2,101,958	2,157,302	2,237,230	29.5%	3.7%
Pendleton WIA	1,428,157	1,557,584	1,691,550	1,727,774	1,832,224	1,912,058	2,004,927	40.4%	4.9%
Santee-Lynches WIA	956,414	1,032,482	1,111,932	1,135,386	1,208,375	1,249,755	1,295,173	35.4%	3.6%
Trident WIA	2,119,602	2,289,811	2,472,370	2,533,830	2,698,450	2,799,449	2,929,767	38.2%	4.7%
Upper Savannah WIA	1,196,487	1,294,942	1,349,335	1,327,026	1,405,850	1,443,338	1,497,026	25.1%	3.7%
Upstate WIA	1,452,643	1,572,753	1,704,054	1,730,368	1,816,561	1,876,126	1,967,226	35.4%	4.9%
Waccamaw WIA	1,416,147	1,544,900	1,672,482	1,734,038	1,853,055	1,960,937	2,077,194	46.7%	5.9%
<b>South Carolina</b>	<b>17,266,590</b>	<b>18,650,694</b>	<b>20,088,821</b>	<b>20,530,570</b>	<b>21,767,057</b>	<b>22,571,378</b>	<b>23,710,297</b>	<b>37.3%</b>	<b>5.0%</b>
<b>United States</b>	<b>1,225,877,667</b>	<b>1,307,996,694</b>	<b>1,406,046,149</b>	<b>1,449,141,409</b>	<b>1,496,058,694</b>	<b>1,537,474,372</b>	<b>1,592,182,921</b>	<b>29.9%</b>	<b>3.6%</b>

\*Dollar estimates adjusted to 2007 dollars

Source: Bureau of Economic Analysis, Regional Economic Information System (REIS): TableCA35 Available at: <http://www.bea.gov/bea/regional/reis>

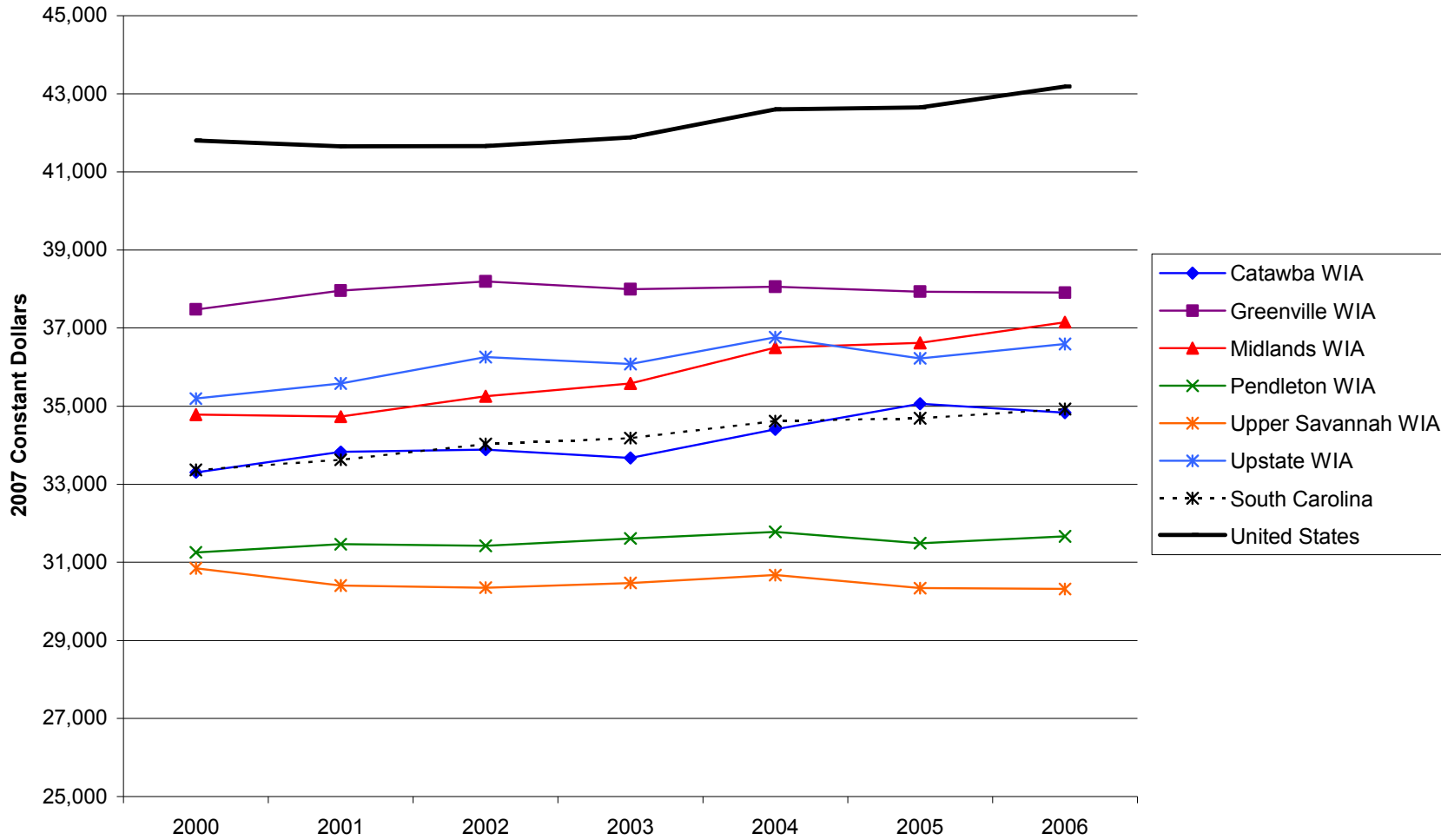
## B.5. Poverty Rate

	<b>2000</b>	<b>2001</b>	<b>2002</b>	<b>2003</b>	<b>2004</b>	<b>2005</b>	<b>2006</b>	<b>Rate Change</b>	
								<b>2000-2005</b>	<b>2004-2005</b>
Catawba WIA	10.6%	11.5%	12.0%	12.4%	13.2%	13.4%	--	2.75	0.23
Greenville WIA	9.8%	10.7%	11.5%	12.0%	13.0%	12.9%	--	3.10	-0.10
Lowcountry WIA	14.2%	15.9%	15.7%	14.1%	14.9%	15.9%	--	1.72	0.99
Lower Savannah WIA	15.9%	16.9%	16.9%	16.6%	18.0%	19.7%	--	3.86	1.73
Midlands WIA	10.9%	11.8%	12.2%	12.6%	13.7%	13.5%	--	2.56	-0.20
Pee Dee WIA	17.9%	18.7%	18.5%	18.0%	19.7%	20.8%	--	2.89	1.11
Pendleton WIA	10.3%	11.6%	12.0%	11.7%	13.5%	14.1%	--	3.82	0.70
Santee-Lynches WIA	15.6%	16.7%	16.8%	16.3%	17.8%	18.5%	--	2.90	0.68
Trident WIA	12.4%	13.2%	13.2%	13.0%	13.8%	14.1%	--	1.70	0.33
Upper Savannah WIA	13.4%	14.9%	15.2%	14.6%	16.0%	17.1%	--	3.69	1.18
Upstate WIA	11.5%	12.7%	13.2%	13.3%	14.2%	15.5%	--	4.07	1.37
Waccamaw WIA	14.4%	15.8%	15.3%	14.6%	15.6%	17.1%	--	2.66	1.48
<b>South Carolina</b>	<b>12.8%</b>	<b>13.8%</b>	<b>14.0%</b>	<b>13.8%</b>	<b>15.0%</b>	<b>15.6%</b>	<b>--</b>	<b>2.80</b>	<b>0.60</b>
<b>United States</b>	<b>11.3%</b>	<b>11.7%</b>	<b>12.1%</b>	<b>12.5%</b>	<b>12.7%</b>	<b>13.3%</b>	<b>--</b>	<b>2.00</b>	<b>0.60</b>

Source: U.S. Census Bureau, Small Area Income and Poverty Estimates. Available at: <http://www.census.gov/hhes/www/saie/tables.html>

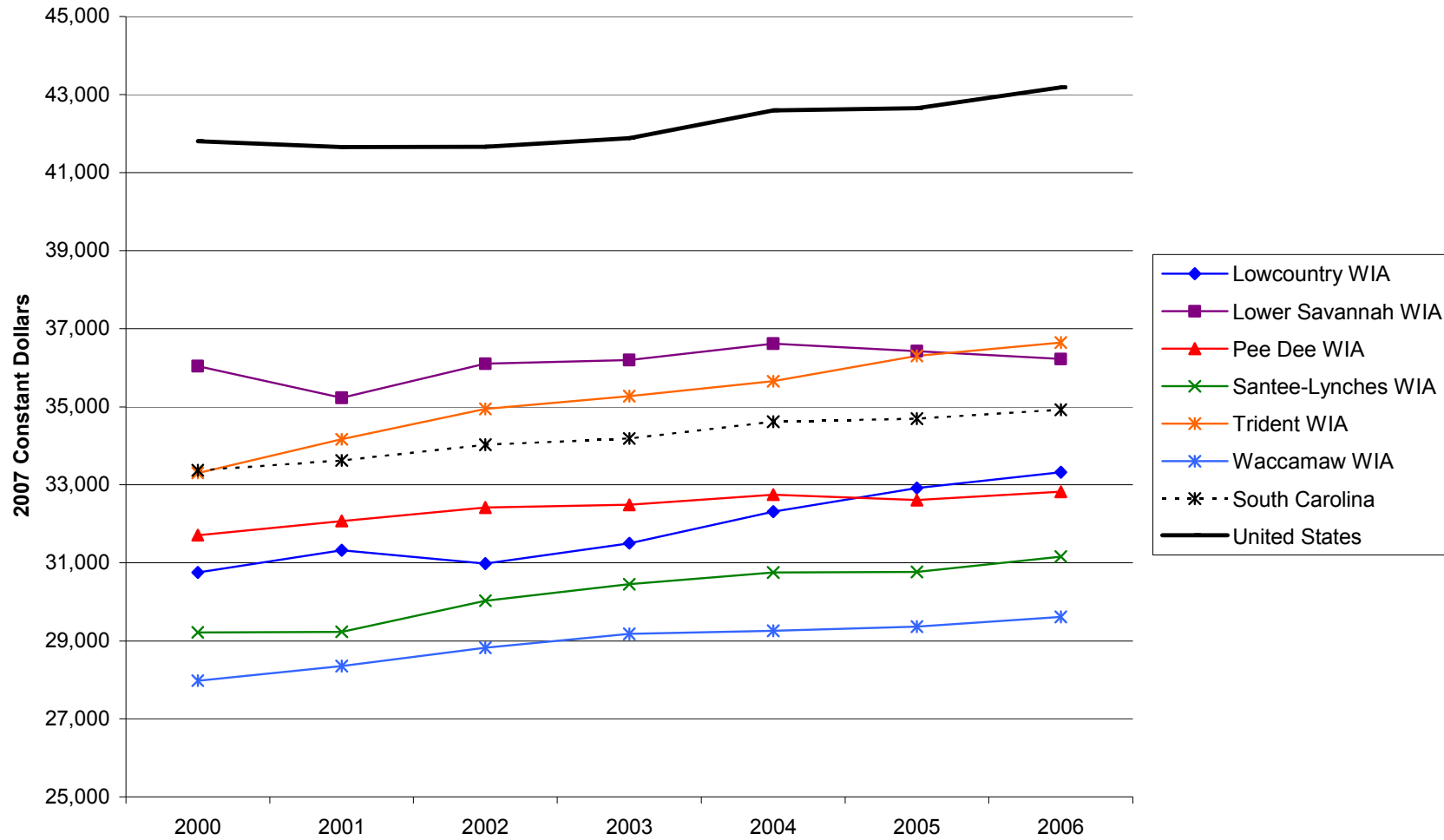
**Figure B.1. Earnings per Worker in SC Workforce Investment Areas, South Carolina, and United States, 2000-2006**

Source: Bureau of Economic Analysis, Regional Economic Information System (REIS): Table CA30



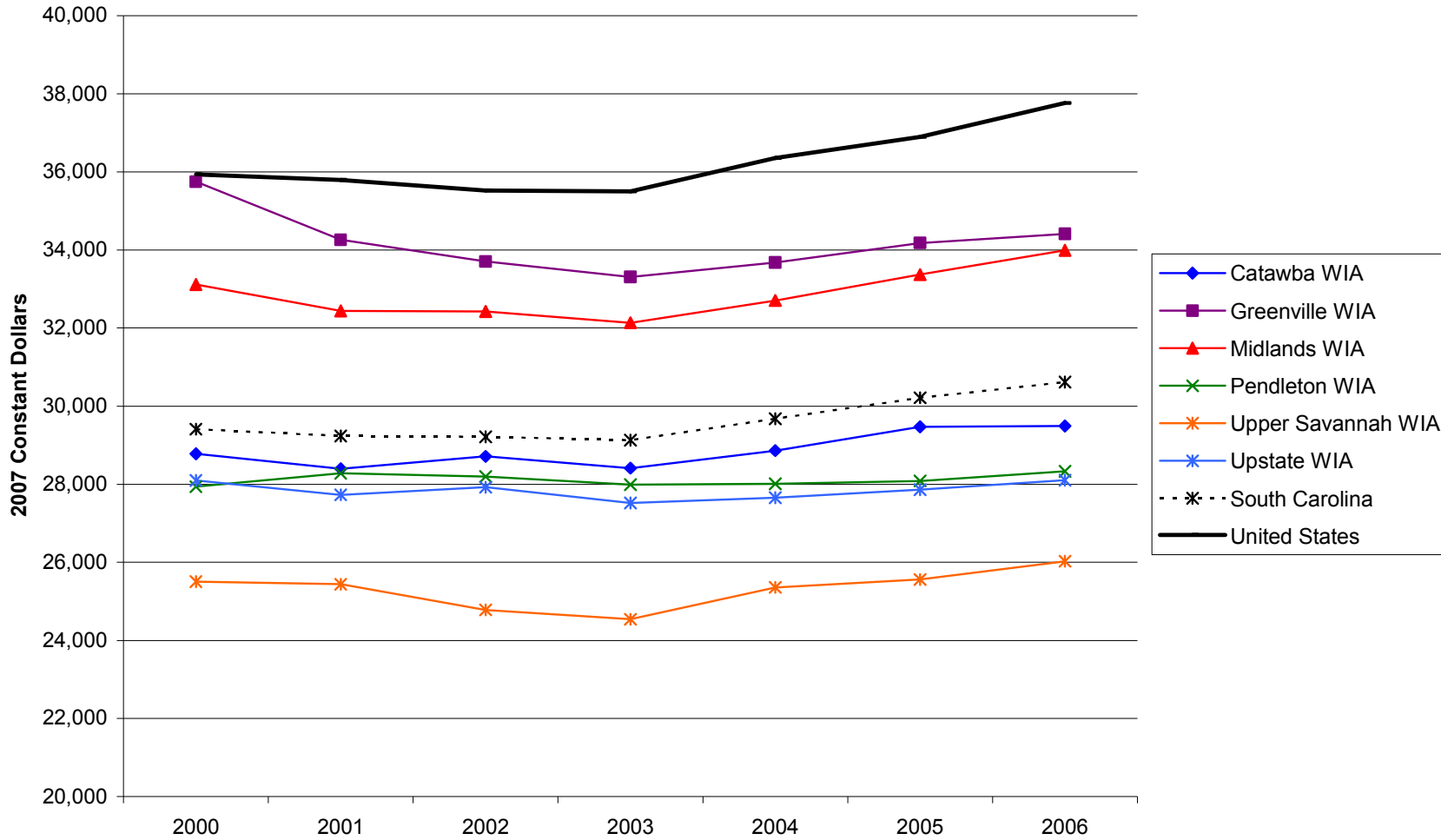
**Figure B.2. Earnings per Worker in SC Workforce Investment Areas, South Carolina, and United States, 2000-2006**

Source: Bureau of Economic Analysis, Regional Economic Information System (REIS): Table CA30



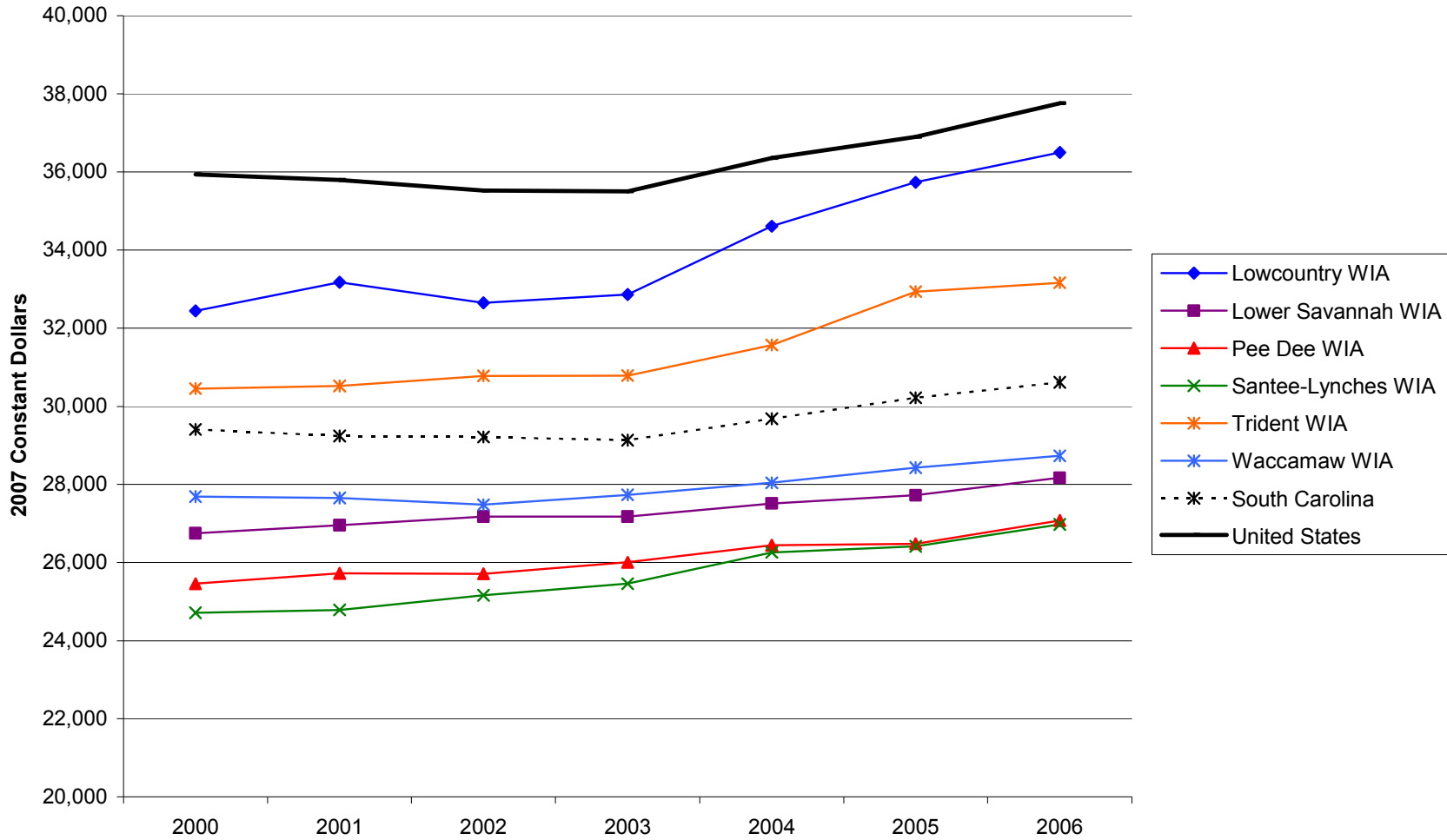
**Figure B.3. Per Capita Personal Income in SC Workforce Investment Areas, South Carolina, and United States, 2000-2006**

Source: Bureau of Economic Analysis, Regional Economic Information System (REIS): Table CA1-3



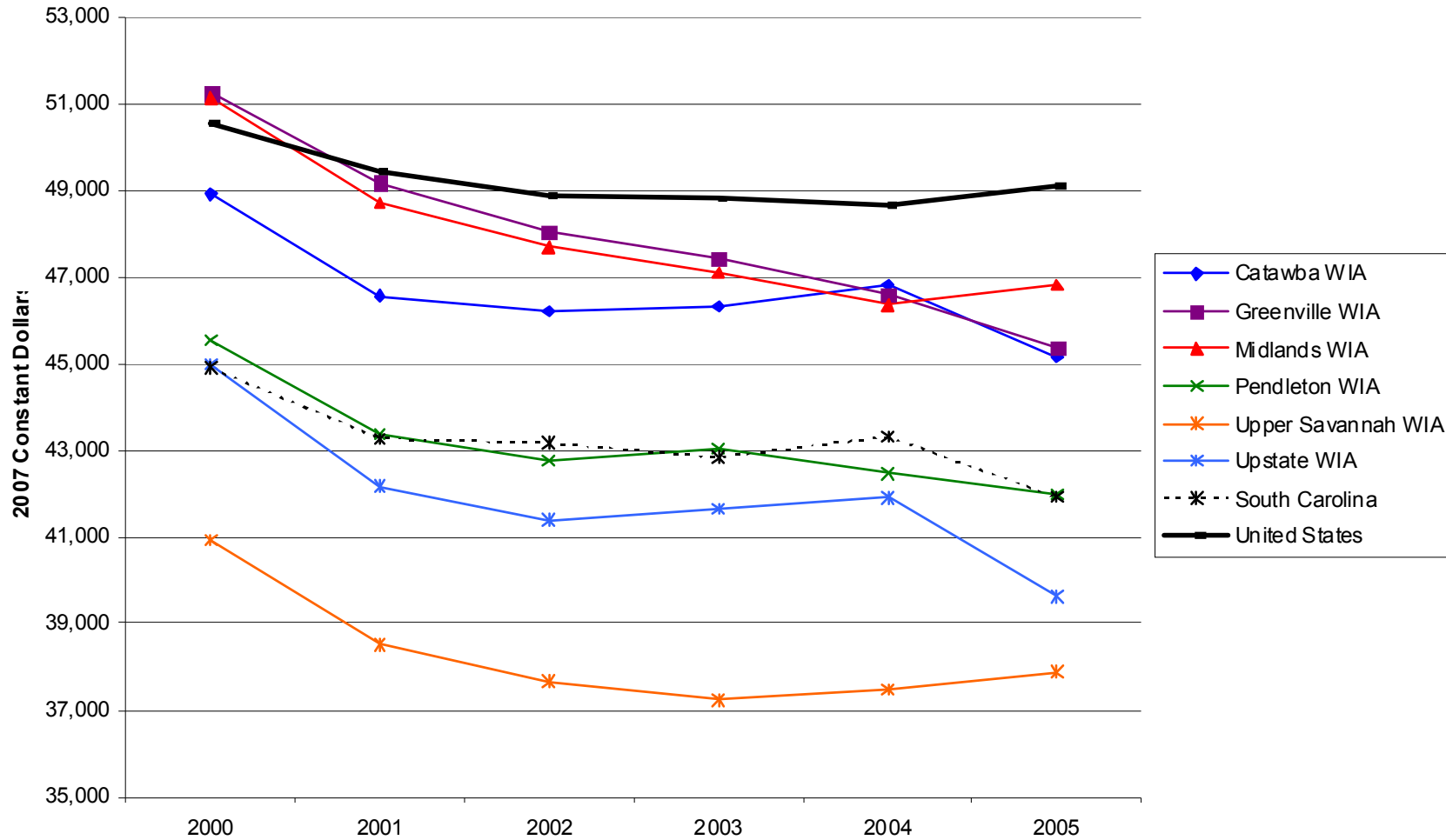
**Figure B.4. Per Capita Personal Income in SC Workforce Investment Areas, South Carolina, and United States, 2000-2006**

Source: Bureau of Economic Analysis, Regional Economic Information System (REIS): Table CA1-3



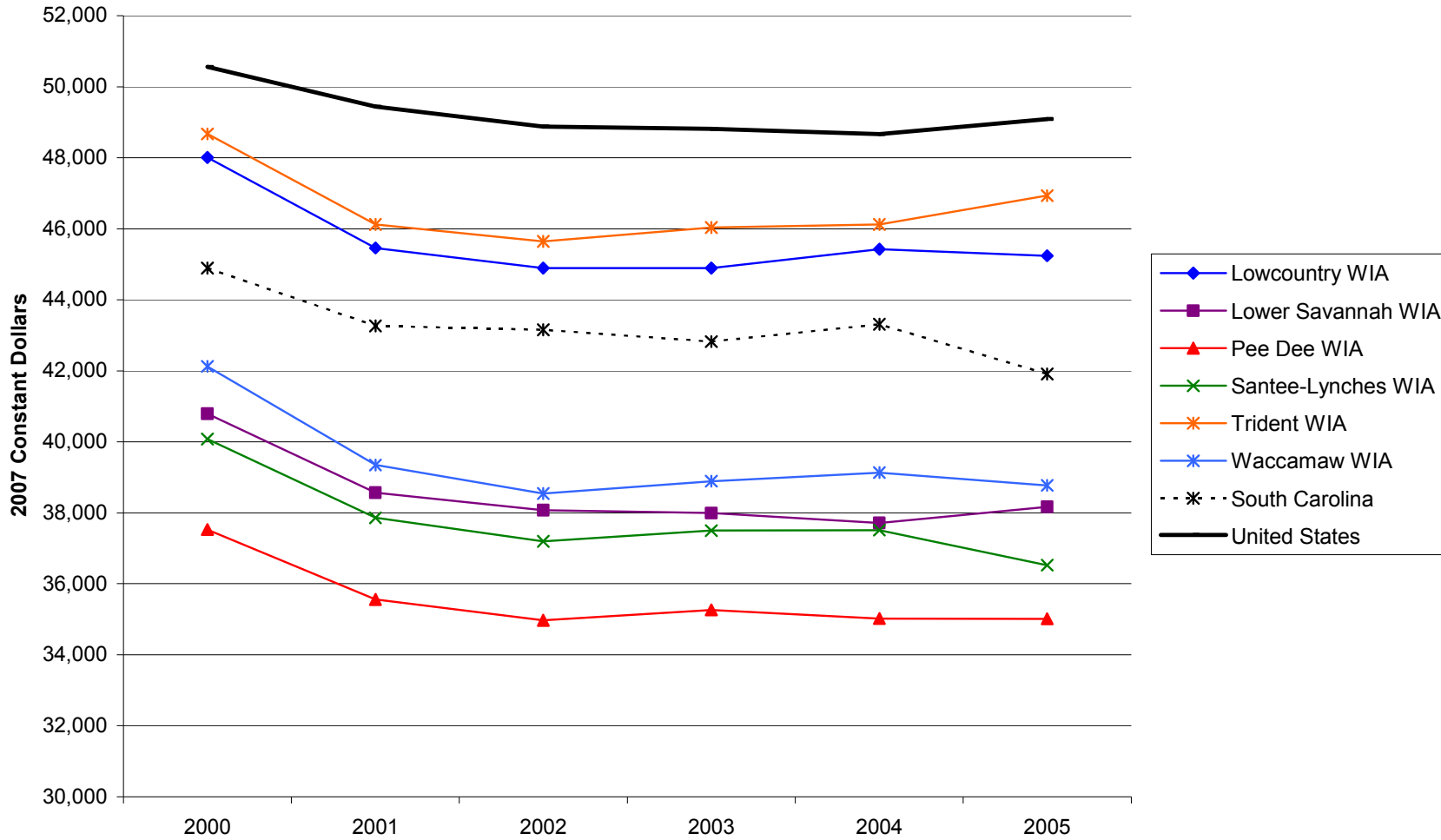
**Figure B.5. Median Household Incomes in SC Workforce Investment Areas, South Carolina, and United States, 2000-2005**

Source: U.S. Census Bureau, Small Area Income and Poverty Estimates



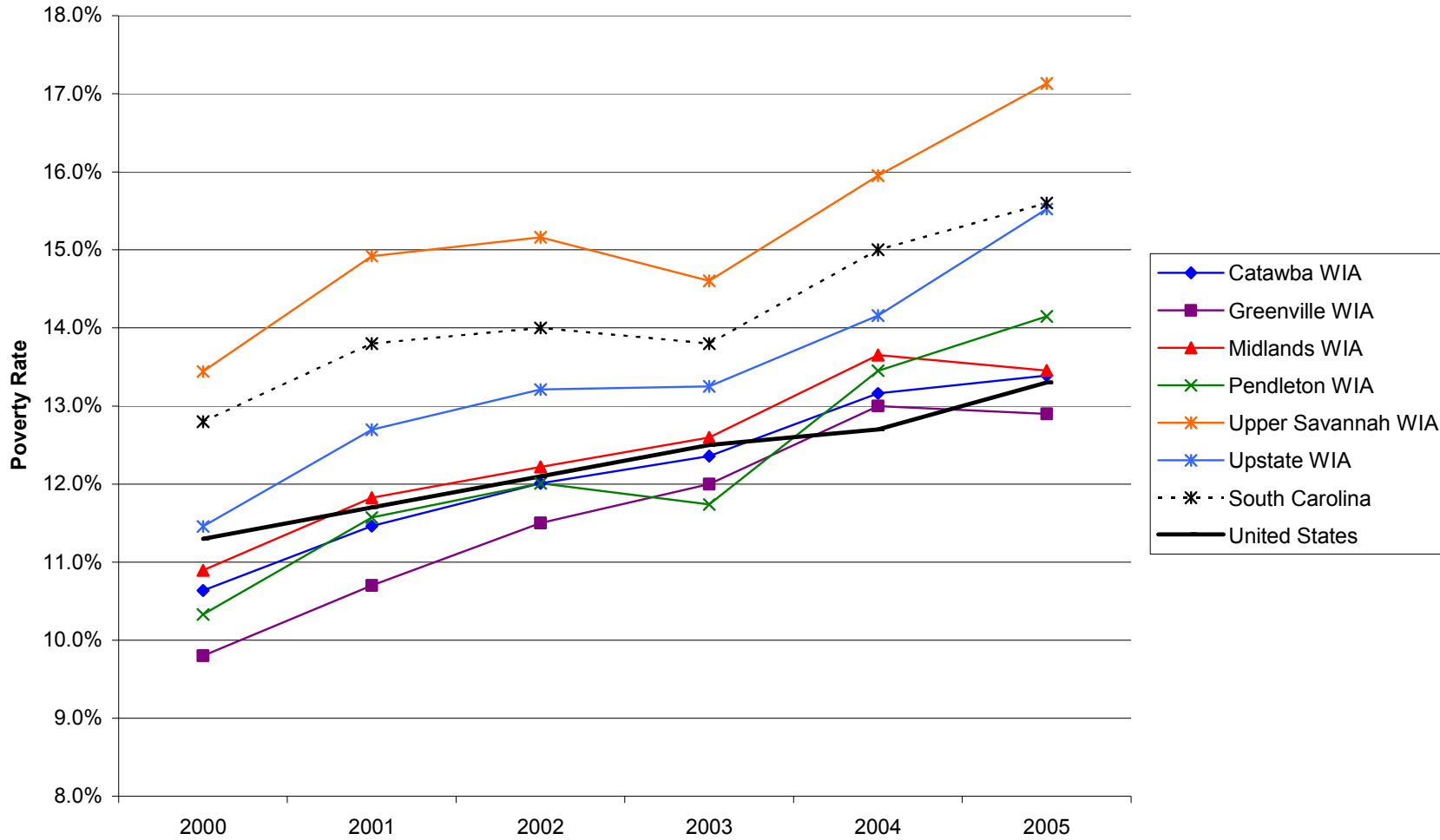
**Figure B.6. Median Household Incomes in SC Workforce Investment Areas, South Carolina, and United States, 2000-2005**

Source: U.S. Census Bureau, Small Area Income and Poverty Estimates



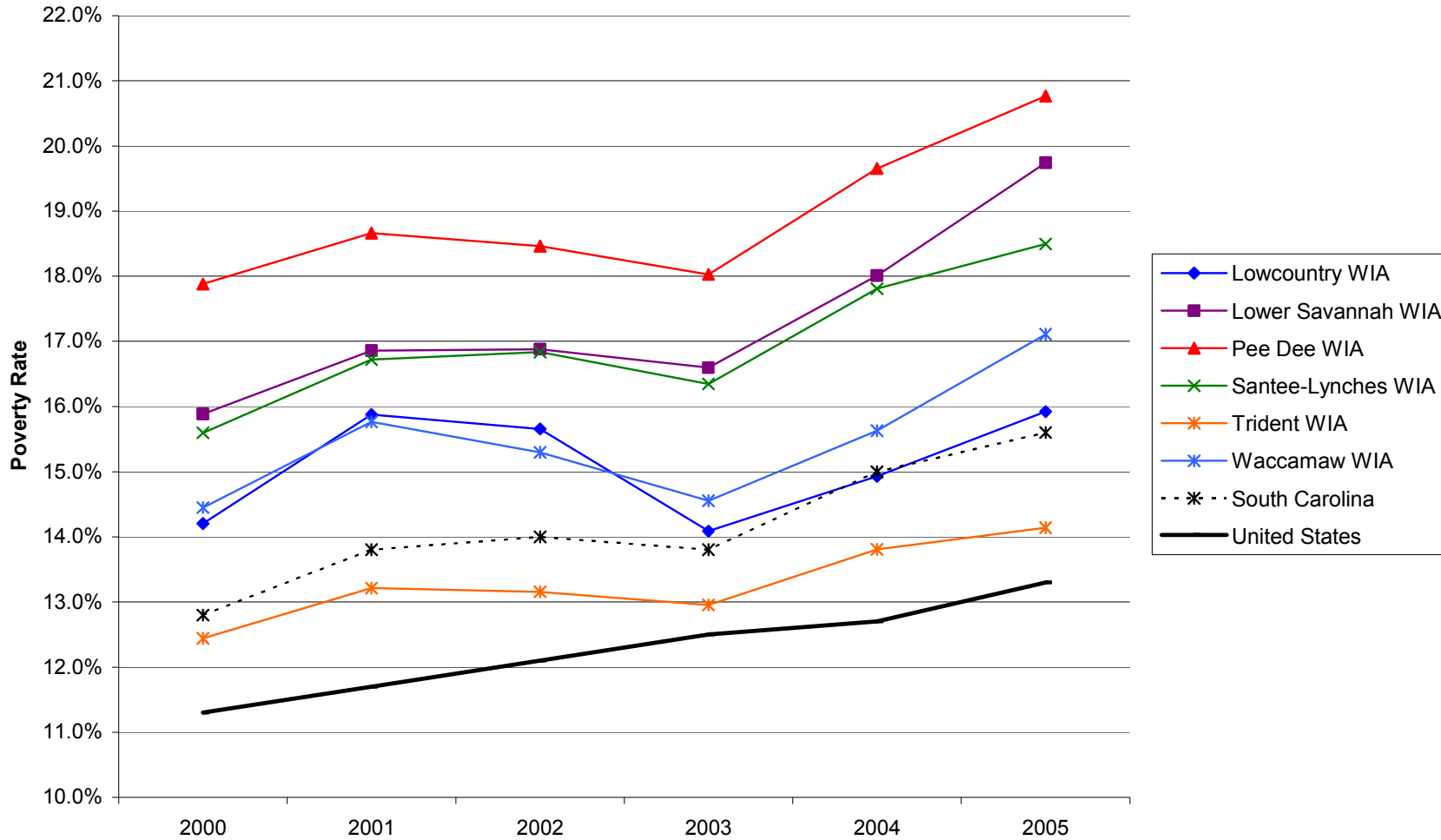
**Figure B.7. Poverty Rates in SC Workforce Investment Areas, South Carolina, and United States, 2000-2005**

Source: U.S. Census Bureau, Small Area Income and Poverty Estimates



**Figure B.8. Poverty Rates in SC Workforce Investment Areas, South Carolina, and United States, 2000-2005**

Source: U.S. Census Bureau, Small Area Income and Poverty Estimates



### **C. Overview of Economic Trends in South Carolina's Workforce Investment Areas (WIAs): Innovative Activity, 2000-2006**

Between 2000 and 2007, South Carolina scientists and inventors received 4,238 patents (Table C.1). Much of this innovative activity (1,020 patents) was in the Greenville WIA. The Greenville WIA reported 5.7 patents per 10,000 employees in 2007; a number greater than the state average (2.6), but below the national average (7.0) of patents per 10,000 employees (Table C.2). Pendleton (5.4), Upstate (4.1), and Pee Dee (3.1) WIAs also reported a numbers greater than the state average; the remaining WIAs reported between 1 and 2 patents per 10,000 employees. The total number of patents decreased between 2006 and 2007 across all geographic areas with the exception of the Santee-Lynches WIA, which increased patent activity from 4 to 6 patents per year, and Lower Savannah WIA, which remained unchanged with 14 patents a year (Table C.1).

Innovative activity also may be reflected in funding for Small Business Innovation Research (SBIR) and Small Business Technology Transfer (STTR) Program research award dollars. In 2006 the U.S. average for SBIR and STTR funding was \$19,566 per 1,000 employees. South Carolina received only \$3,560 of funding per 1,000 employees in 2006 (Table C.5). The WIAs receiving the largest average annual funding per 1,000 employees over the past 7 years were Lowcountry (\$17,688), Midlands (\$14,015), and Trident (\$11,986). Readers are encouraged to refer to Tables C.4 and C.5 for more information on SBIR and STTR awards because the funding is highly variable by region and year.

Figures C.1 through C.4 provide trend lines for the number of patents and SBIR/STTR award values for the period 2000-2006/2007.

## C. Innovative Activity

Geographic Area	Year								Percent Change	
<b>C.1. Patents* (Total)</b>										
	<b>2000</b>	<b>2001</b>	<b>2002</b>	<b>2003</b>	<b>2004</b>	<b>2005</b>	<b>2006</b>	<b>2007</b>	<b>2000-2007</b>	<b>2006-2007</b>
Catawba WIA	29	29	37	30	29	21	29	18	-37.9%	-37.9%
Greenville WIA	104	139	139	124	116	119	159	120	15.4%	-24.5%
Lowcountry WIA	23	15	16	15	18	18	19	17	-26.1%	-10.5%
Lower Savannah WIA	27	26	21	31	14	13	14	14	-48.1%	0.0%
Midlands WIA	65	73	50	60	62	42	61	39	-40.0%	-36.1%
Pee-Dee WIA	47	32	34	28	41	27	49	31	-34.0%	-36.7%
Pendleton WIA	68	84	81	86	69	56	73	51	-25.0%	-30.1%
Santee-Lynches WIA	7	6	6	6	4	10	3	6	-14.3%	100.0%
Trident WIA	83	66	93	63	71	58	52	40	-51.8%	-23.1%
Upper Savannah WIA	11	7	16	9	9	4	12	9	-18.2%	-25.0%
Upstate WIA	62	74	88	103	77	77	87	51	-17.7%	-41.4%
Waccamaw WIA	6	12	18	15	12	16	17	13	116.7%	-23.5%
<b>South Carolina</b>	<b>532</b>	<b>565</b>	<b>600</b>	<b>570</b>	<b>523</b>	<b>462</b>	<b>577</b>	<b>409</b>	<b>-23.1%</b>	<b>-29.1%</b>
<b>United States</b>	<b>85,068</b>	<b>87,600</b>	<b>86,971</b>	<b>87,893</b>	<b>84,271</b>	<b>74,637</b>	<b>89,823</b>	<b>79,527</b>	<b>-6.5%</b>	<b>-11.5%</b>

\*U.S. utility patents issued to South Carolina inventors. Origin of the patent is determined by county of residence of the first-named inventor.  
Source: United States Patent and Trademark Office, Patent Electronic Business Center. Available at: <http://www.uspto.gov/patft/index.html>

## C.2 Patents per 10,000 Employees

	<b>2000</b>	<b>2001</b>	<b>2002</b>	<b>2003</b>	<b>2004</b>	<b>2005</b>	<b>2006</b>	<b>2007</b>	<b>2000-2007</b>	<b>2006-2007</b>
Catawba WIA	3.7	3.9	4.9	4.0	3.7	2.6	3.5	2.2	-42.1%	-37.9%
Greenville WIA	5.0	6.9	7.1	6.3	5.9	5.9	7.7	5.7	14.4%	-26.3%
Lowcountry WIA	3.7	2.4	2.5	2.3	2.7	2.6	2.7	2.3	-37.1%	-11.8%
Lower Savannah WIA	2.9	2.9	2.3	3.5	1.6	1.5	1.6	1.6	-45.9%	-0.8%
Midlands WIA	2.9	3.3	2.2	2.7	2.7	1.8	2.6	1.6	-45.8%	-38.2%
Pee-Dee WIA	4.4	3.1	3.3	2.7	4.1	2.8	5.0	3.1	-28.1%	-36.8%
Pendleton WIA	6.5	8.3	8.3	9.1	7.3	6.0	7.8	5.4	-18.0%	-31.0%
Santee-Lynches WIA	1.2	1.1	1.1	1.1	0.7	1.8	0.6	1.1	-8.1%	99.5%
Trident WIA	4.3	3.4	4.8	3.2	3.5	2.7	2.4	1.8	-59.2%	-25.8%
Upper Savannah WIA	1.6	1.0	2.5	1.4	1.4	0.6	1.9	1.4	-9.9%	-24.6%
Upstate WIA	4.8	5.9	7.2	8.4	6.4	6.4	7.1	4.1	-13.4%	-42.4%
Waccamaw WIA	0.5	1.1	1.6	1.3	1.0	1.3	1.3	1.0	88.3%	-24.5%
<b>South Carolina</b>	<b>3.5</b>	<b>3.8</b>	<b>4.1</b>	<b>3.9</b>	<b>3.5</b>	<b>3.1</b>	<b>3.8</b>	<b>2.6</b>	<b>-25.9%</b>	<b>-30.4%</b>
<b>United States</b>	<b>7.7</b>	<b>8.0</b>	<b>8.1</b>	<b>8.2</b>	<b>7.8</b>	<b>6.7</b>	<b>8.0</b>	<b>7.0</b>	<b>-9.8%</b>	<b>-12.5%</b>

\*U.S. utility patents issued to South Carolina inventors. Origin of the patent is determined by county of residence of the first-named inventor.  
Source: United States Patent and Trademark Office, Patent Electronic Business Center. Available at: <http://www.uspto.gov/patft/index.html>

## C. Innovative Activity

Geographic Area	Year						
<b>C.3 SBIR/STTR Phase I and II Total Award</b>							
	<b>2000</b>	<b>2001</b>	<b>2002</b>	<b>2003</b>	<b>2004</b>	<b>2005</b>	<b>2006</b>
Catawba WIA	\$0	\$0	\$0	\$112,635	\$76,382	\$541,241	\$842,363
Greenville WIA	\$0	\$0	\$0	\$0	\$0	\$0	\$174,637
Lowcountry WIA	\$930,059	\$3,672,123	\$160,945	\$1,014,035	\$1,363,928	\$621,069	\$102,564
Lower Savannah WIA	\$84,182	\$0	\$0	\$112,519	\$0	\$0	\$0
Midlands WIA	\$939,180	\$2,160,944	\$2,260,279	\$5,750,335	\$4,660,011	\$4,472,830	\$2,115,549
Pee Dee WIA	\$0	\$109,753	\$0	\$0	\$0	\$0	\$0
Pendleton WIA	\$601,896	\$234,152	\$1,514,905	\$225,214	\$1,455,484	\$605,138	\$308,504
Santee-Lynches WIA	\$0	\$0	\$0	\$0	\$109,763	\$796,244	\$0
Trident WIA	\$2,233,230	\$877,596	\$4,722,144	\$1,469,956	\$1,340,315	\$5,293,231	\$993,073
Upper Savannah WIA	\$0	\$320,057	\$576,268	\$1,044,181	\$203,880	\$105,765	\$844,642
Upstate WIA	\$0	\$0	\$0	\$0	\$0	\$0	\$0
Waccamaw WIA	\$0	\$0	\$109,563	\$0	\$0	\$0	\$82,279
<b>South Carolina</b>	<b>\$4,788,547</b>	<b>\$7,374,626</b>	<b>\$9,344,104</b>	<b>\$9,728,875</b>	<b>\$9,209,763</b>	<b>\$12,435,519</b>	<b>\$5,463,610</b>
<b>United States</b>	<b>\$1,335,065,202</b>	<b>\$1,430,785,492</b>	<b>\$1,834,242,568</b>	<b>\$2,097,140,710</b>	<b>\$2,440,358,637</b>	<b>\$2,214,153,594</b>	<b>\$2,205,502,124</b>

Source: U.S. Small Business Administration, Technology Resources Network Available at: [http://tech-net.sba.gov/tech-net/public/dsp\\_search.cfm](http://tech-net.sba.gov/tech-net/public/dsp_search.cfm)

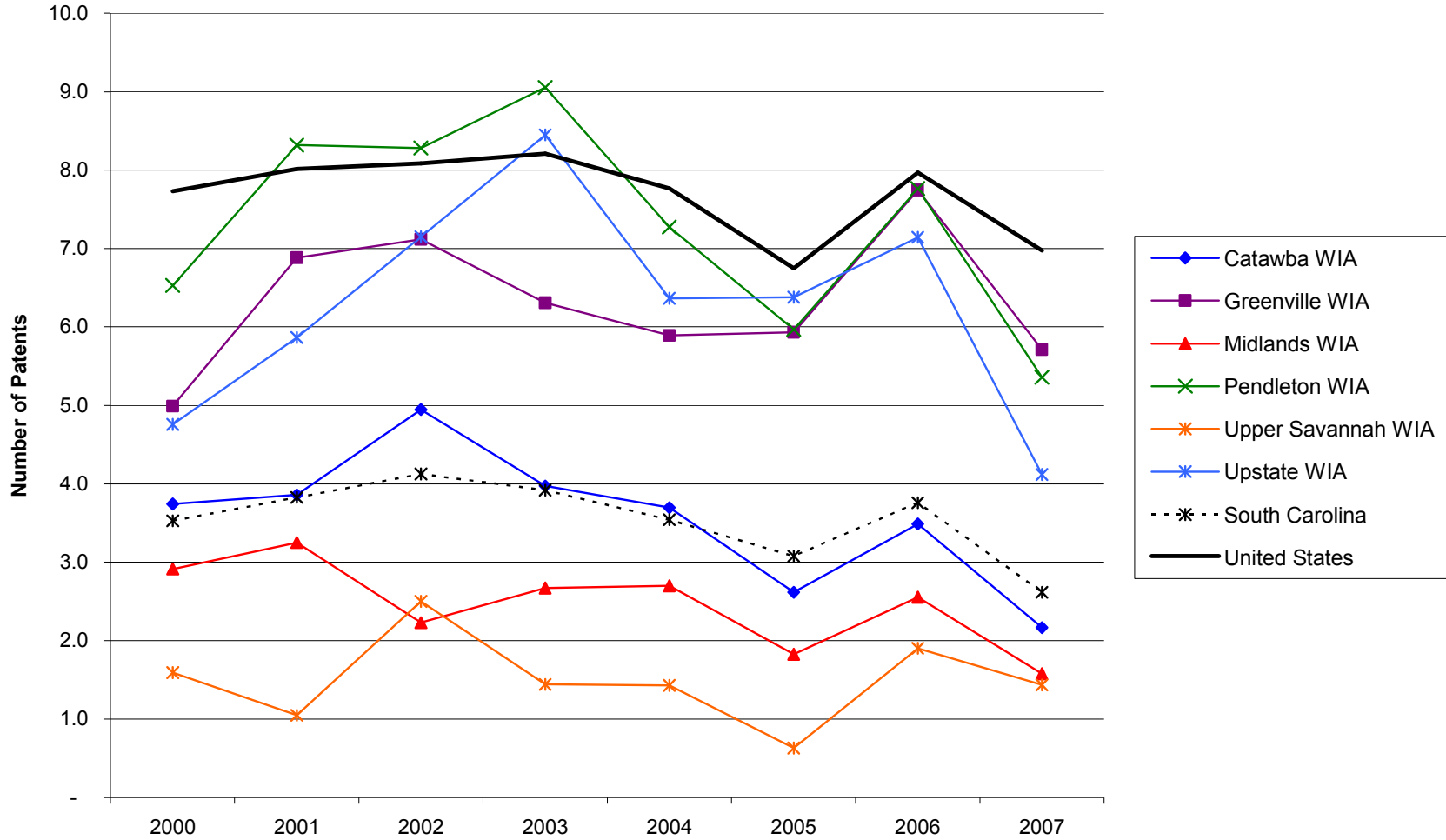
## C.4 SBIR/STTR Award per 1,000 Employees

	<b>2000</b>	<b>2001</b>	<b>2002</b>	<b>2003</b>	<b>2004</b>	<b>2005</b>	<b>2006</b>
Catawba WIA	\$0	\$0	\$0	\$1,491	\$973	\$6,746	\$10,130
Greenville WIA	\$0	\$0	\$0	\$0	\$0	\$0	\$851
Lowcountry WIA	\$15,051	\$59,488	\$2,545	\$15,750	\$20,495	\$9,051	\$1,433
Lower Savannah WIA	\$907	\$0	\$0	\$1,261	\$0	\$0	\$0
Midlands WIA	\$4,210	\$9,622	\$10,076	\$25,585	\$20,301	\$19,457	\$8,858
Pee Dee WIA	\$0	\$1,050	\$0	\$0	\$0	\$0	\$0
Pendleton WIA	\$5,779	\$2,319	\$15,488	\$2,371	\$15,339	\$6,450	\$3,281
Santee-Lynches WIA	\$0	\$0	\$0	\$0	\$2,001	\$14,723	\$0
Trident WIA	\$11,642	\$4,581	\$24,227	\$7,389	\$6,517	\$25,005	\$4,543
Upper Savannah WIA	\$0	\$4,790	\$9,009	\$16,717	\$3,239	\$1,669	\$13,397
Upstate WIA	\$0	\$0	\$0	\$0	\$0	\$0	\$0
Waccamaw WIA	\$0	\$0	\$980	\$0	\$0	\$0	\$642
<b>South Carolina</b>	<b>\$3,176</b>	<b>\$4,993</b>	<b>\$6,424</b>	<b>\$6,690</b>	<b>\$6,237</b>	<b>\$8,287</b>	<b>\$3,560</b>
<b>United States</b>	<b>\$12,134</b>	<b>\$13,090</b>	<b>\$17,050</b>	<b>\$19,587</b>	<b>\$22,494</b>	<b>\$20,017</b>	<b>\$19,566</b>

Source: U.S. Small Business Administration, Technology Resources Network Available at: [http://tech-net.sba.gov/tech-net/public/dsp\\_search.cfm](http://tech-net.sba.gov/tech-net/public/dsp_search.cfm)

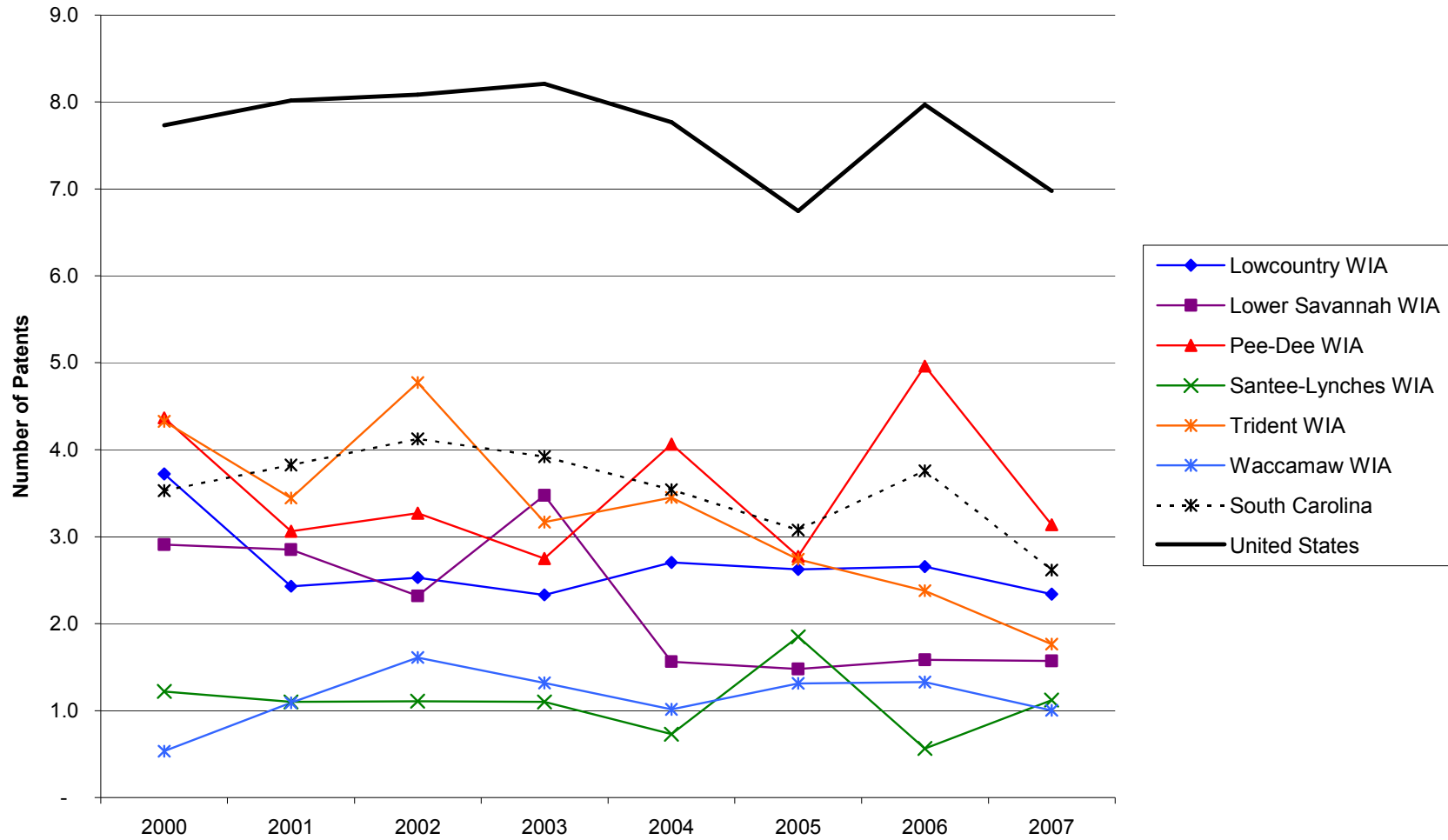
**Figure C.1. Patents per 10,000 Employees in SC Workforce Investment Areas, South Carolina, and United States, 2000-2007**

Source: United States Patent and Trademark Office, Patent Electronic Business Center



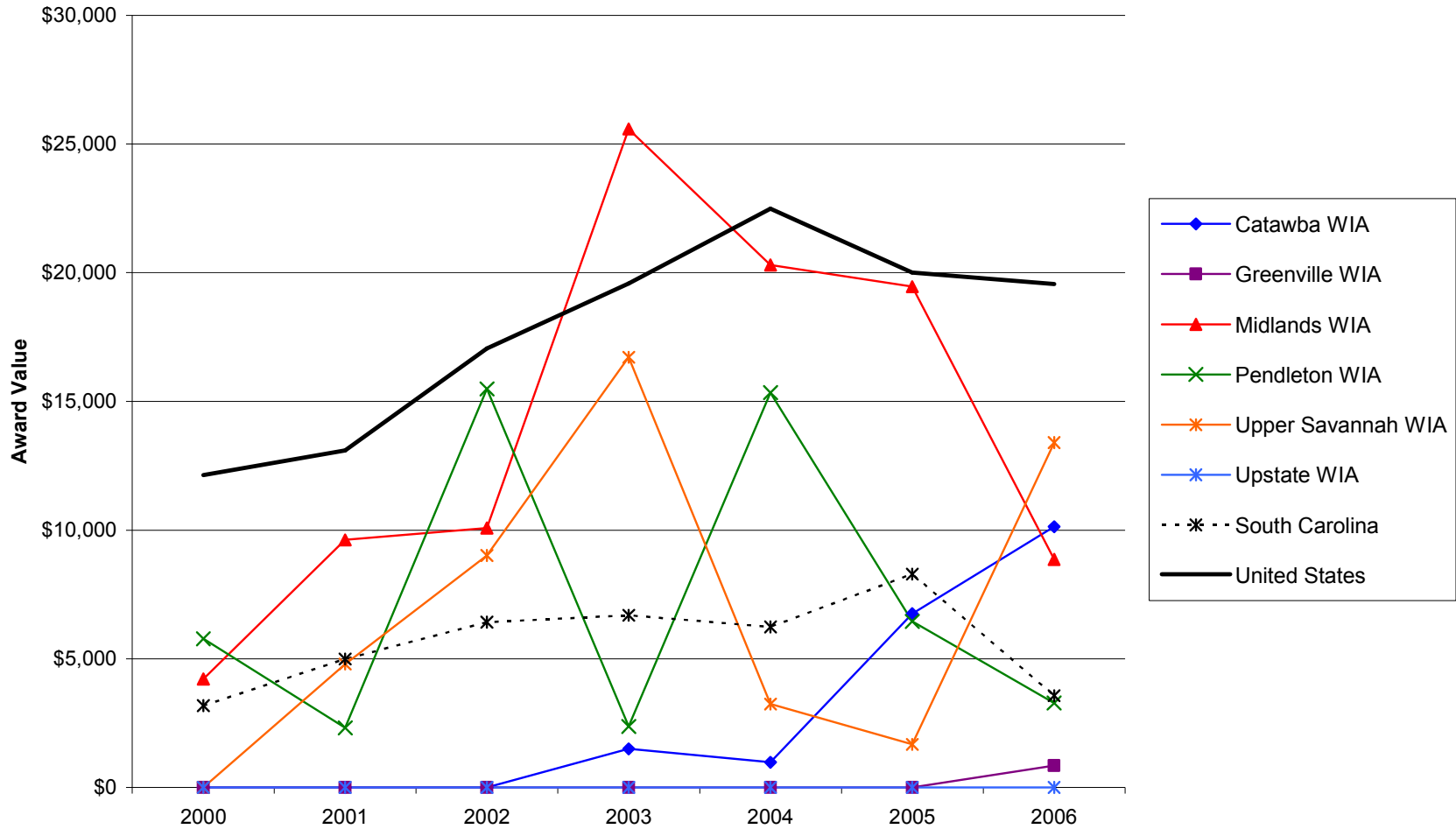
**Figure C.2. Patents per 10,000 Employees in SC Workforce Investment Areas, South Carolina, and United States, 2000-2007**

Source: United States Patent and Trademark Office, Patent Electronic Business Center



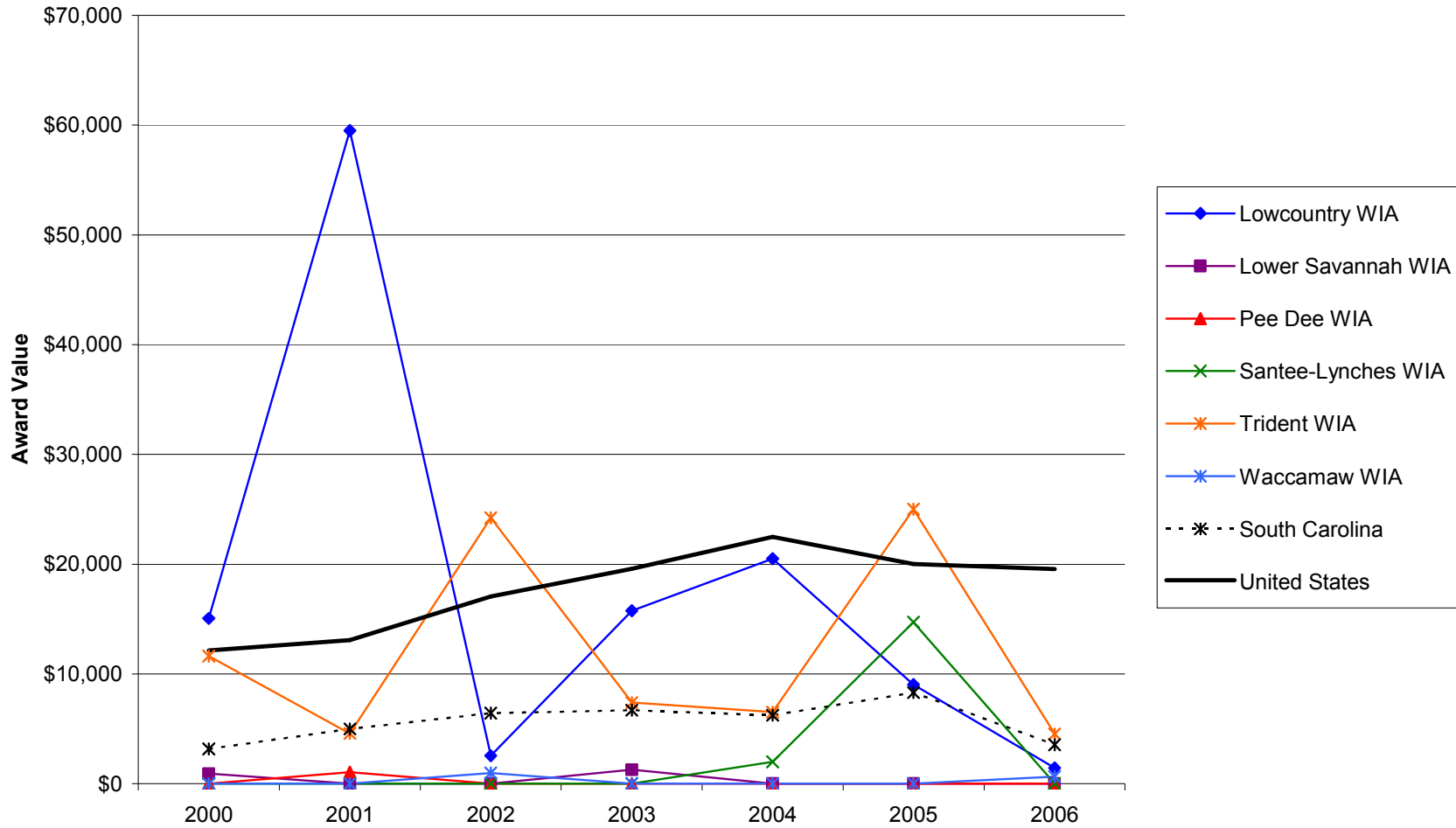
**Figure C.3. SBIR/STTR Phase I and II Awards per 1,000 Employees in SC Workforce Investment Areas, South Carolina, and United States, 2000-2006**

Source: U.S. Small Business Administration, Technology Resources Network



**Figure C.4. SBIR/STTR Phase I and II Awards per 1,000 Employees in SC Workforce Investment Areas, South Carolina, and United States, 2000-2006**

Source: U.S. Small Business Administration, Technology Resources Network



## Private Establishments

FIPS	County	Year								Percent Change	
		2000	2001	2002	2003	2004	2005	2006	2007	2000-2007	2006-2007
45001	Abbeville County	333	319	332	317	338	354	372	335	0.6%	-9.9%
45003	Aiken County	2,759	2,753	2,842	2,781	2,746	2,889	3,135	2,792	1.2%	-10.9%
45005	Allendale County	180	178	184	174	163	160	170	151	-16.1%	-11.2%
45007	Anderson County	3,470	3,480	3,626	3,461	3,404	3,534	3,707	3,427	-1.2%	-7.6%
45009	Bamberg County	305	313	322	307	300	317	330	285	-6.6%	-13.6%
45011	Barnwell County	429	421	434	408	397	422	466	395	-7.9%	-15.2%
45013	Beaufort County	4,493	4,646	4,943	4,880	4,834	5,078	5,515	5,045	12.3%	-8.5%
45015	Berkeley County	1,793	1,861	1,972	1,879	1,865	2,043	2,337	2,133	19.0%	-8.7%
45017	Calhoun County	243	251	261	253	253	270	278	231	-4.9%	-16.9%
45019	Charleston County	11,370	11,606	12,244	11,848	11,552	12,187	13,294	11,979	5.4%	-9.9%
45021	Cherokee County	987	994	1,031	995	960	986	1,026	899	-8.9%	-12.4%
45023	Chester County	585	592	615	580	540	558	609	541	-7.5%	-11.2%
45025	Chesterfield County	756	784	815	776	729	746	784	700	-7.4%	-10.7%
45027	Clarendon County	570	567	581	535	511	536	601	549	-3.7%	-8.7%
45029	Colleton County	883	908	941	891	850	884	937	797	-9.7%	-14.9%
45031	Darlington County	1,268	1,255	1,286	1,220	1,173	1,190	1,232	1,091	-14.0%	-11.4%
45033	Dillon County	547	548	564	545	528	544	563	498	-9.0%	-11.5%
45035	Dorchester County	1,880	1,953	2,078	2,017	1,964	2,131	2,372	2,095	11.4%	-11.7%
45037	Edgefield County	364	366	378	349	338	346	377	312	-14.3%	-17.2%
45039	Fairfield County	344	352	355	332	318	332	356	315	-8.4%	-11.5%
45041	Florence County	3,388	3,373	3,481	3,295	3,167	3,218	3,400	3,092	-8.7%	-9.1%
45043	Georgetown County	1,760	1,783	1,881	1,871	1,833	1,927	2,164	1,998	13.5%	-7.7%
45045	Greenville County	11,811	11,950	12,518	12,201	11,821	12,299	13,148	12,135	2.7%	-7.7%
45047	Greenwood County	1,558	1,546	1,584	1,535	1,457	1,486	1,544	1,438	-7.7%	-6.9%
45049	Hampton County	486	496	495	462	445	468	490	398	-18.1%	-18.8%
45051	Horry County	7,755	7,817	8,199	7,910	7,820	8,301	9,167	8,250	6.4%	-10.0%
45053	Jasper County	444	469	503	511	522	556	619	558	25.7%	-9.9%
45055	Kershaw County	1,226	1,231	1,246	1,184	1,171	1,229	1,318	1,168	-4.7%	-11.4%
45057	Lancaster County	1,104	1,120	1,195	1,111	1,079	1,137	1,216	1,077	-2.4%	-11.4%
45059	Laurens County	912	917	942	877	839	856	893	829	-9.1%	-7.2%
45061	Lee County	280	275	281	275	265	264	286	269	-3.9%	-5.9%
45063	Lexington County	5,201	5,295	5,607	5,467	5,333	5,653	6,093	5,478	5.3%	-10.1%
45065	McCormick County	134	125	128	121	113	117	130	122	-9.0%	-6.2%
45067	Marion County	691	676	665	626	603	613	642	558	-19.2%	-13.1%
45069	Marlboro County	471	479	478	442	415	417	426	376	-20.2%	-11.7%
45071	Newberry County	723	730	749	729	719	753	791	711	-1.7%	-10.1%
45073	Oconee County	1,467	1,489	1,554	1,506	1,485	1,556	1,655	1,500	2.2%	-9.4%
45075	Orangeburg County	1,975	1,979	2,014	1,907	1,836	1,886	1,972	1,722	-12.8%	-12.7%
45077	Pickens County	2,179	2,139	2,176	2,102	2,047	2,142	2,281	2,075	-4.8%	-9.0%
45079	Richland County	9,365	9,394	9,833	9,390	9,031	9,379	10,029	8,914	-4.8%	-11.1%
45081	Saluda County	275	283	297	281	266	276	293	256	-6.9%	-12.6%
45083	Spartanburg County	6,352	6,348	6,552	6,307	6,038	6,239	6,565	5,899	-7.1%	-10.1%
45085	Sumter County	1,975	1,976	2,063	1,973	1,938	2,014	2,138	1,940	-1.8%	-9.3%
45087	Union County	553	524	516	493	467	478	502	441	-20.3%	-12.2%
45089	Williamsburg County	631	621	619	581	556	571	595	555	-12.0%	-6.7%
45091	York County	3,945	4,011	4,257	4,138	4,102	4,313	4,739	4,362	10.6%	-8.0%
	South Carolina	110,221	111,880	115,559	111,385	108,929	115,194	125,222	113,254	2.8%	-9.6%
	United States	7,646,318	7,724,965	7,839,903	7,963,340	8,093,142	8,294,662	8,505,496	8,680,218	13.5%	2.1%

Source: Quarterly Census of Employment and Wages (2000-2006). U.S. Department of Labor, Bureau of Labor Statistics.  
Available at: <http://www.bls.gov/cew/>

## Private Employment

FIPS	County	Year								Percent Change	
		2000	2001	2002	2003	2004	2005	2006	2007	2000-2007	2006-2007
45001	Abbeville County	6,165	5,785	5,383	5,145	5,258	5,429	5,171	4,829	-21.7%	-6.6%
45003	Aiken County	49,000	49,055	49,009	49,048	49,768	48,130	47,810	48,286	-1.5%	1.0%
45005	Allendale County	2,537	2,493	2,376	2,179	2,060	2,018	2,929	2,543	0.2%	-13.2%
45007	Anderson County	52,923	51,576	50,257	47,952	48,528	48,069	48,313	48,820	-7.8%	1.0%
45009	Bamberg County	3,668	3,664	3,709	3,851	3,777	3,736	3,593	3,531	-3.7%	-1.7%
45011	Barnwell County	6,972	6,554	6,266	5,865	5,801	5,674	5,341	5,008	-28.2%	-6.2%
45013	Beaufort County	45,235	45,591	46,788	48,399	50,108	51,860	52,950	53,913	19.2%	1.8%
45015	Berkeley County	25,312	25,697	26,750	26,386	27,242	28,449	29,638	30,934	22.2%	4.4%
45017	Calhoun County	3,079	3,064	3,017	3,166	3,092	3,282	3,288	3,182	3.3%	-3.2%
45019	Charleston County	145,445	143,920	145,092	148,917	154,212	158,544	163,973	170,455	17.2%	4.0%
45021	Cherokee County	18,745	17,944	16,833	16,462	16,926	16,875	17,047	17,513	-6.6%	2.7%
45023	Chester County	10,002	9,525	8,708	8,405	8,560	9,127	8,925	7,866	-21.4%	-11.9%
45025	Chesterfield County	14,012	13,148	12,771	12,372	11,788	11,523	11,934	12,239	-12.7%	2.6%
45027	Clarendon County	5,701	5,475	5,484	5,404	5,531	5,396	5,498	5,566	-2.4%	1.2%
45029	Colleton County	8,427	8,286	8,361	8,124	8,354	8,238	8,692	8,419	-0.1%	-3.1%
45031	Darlington County	19,232	18,808	18,565	18,017	17,795	17,776	17,809	17,518	-8.9%	-1.6%
45033	Dillon County	8,075	7,578	7,649	7,537	7,464	7,893	7,815	7,510	-7.0%	-3.9%
45035	Dorchester County	21,067	21,964	23,069	23,637	24,222	24,694	24,962	25,249	19.9%	1.1%
45037	Edgefield County	4,721	4,709	4,916	4,843	5,090	4,699	4,438	4,450	-5.7%	0.3%
45039	Fairfield County	5,977	5,320	5,126	4,239	4,220	4,310	4,409	4,325	-27.6%	-1.9%
45041	Florence County	50,981	50,548	50,950	50,134	50,400	47,337	48,588	49,964	-2.0%	2.8%
45043	Georgetown County	17,256	17,236	17,132	16,639	17,520	18,226	18,897	19,204	11.3%	1.6%
45045	Greenville County	208,351	201,959	195,368	196,613	196,899	200,653	205,306	210,099	0.8%	2.3%
45047	Greenwood County	25,973	25,250	23,803	23,364	23,446	23,234	22,975	22,662	-12.7%	-1.4%
45049	Hampton County	4,705	4,382	4,238	3,826	3,786	3,751	3,752	3,782	-19.6%	0.8%
45051	Horry County	88,019	85,700	87,727	89,869	93,528	96,269	101,914	103,473	17.6%	1.5%
45053	Jasper County	3,426	3,470	3,861	4,033	4,302	4,768	6,187	6,514	90.1%	5.3%
45055	Kershaw County	14,588	14,238	14,453	14,862	15,004	14,427	14,511	14,682	0.6%	1.2%
45057	Lancaster County	16,320	15,708	15,261	14,309	14,276	14,066	14,101	13,141	-19.5%	-6.8%
45059	Laurens County	16,065	15,464	14,514	13,459	13,719	14,486	14,524	14,631	-8.9%	0.7%
45061	Lee County	2,580	2,519	2,562	2,561	2,626	2,543	2,475	2,492	-3.4%	0.7%
45063	Lexington County	68,242	67,534	68,214	69,023	71,540	73,413	76,160	78,522	15.1%	3.1%
45065	McCormick County	1,252	1,127	1,134	1,055	1,002	1,044	1,090	1,125	-10.1%	3.2%
45067	Marion County	9,230	8,227	7,999	7,707	7,326	6,718	6,431	6,085	-34.1%	-5.4%
45069	Marlboro County	6,146	6,188	6,080	6,097	6,127	6,145	6,154	5,446	-11.4%	-11.5%
45071	Newberry County	11,172	10,777	10,421	10,908	10,970	10,975	11,231	11,571	3.6%	3.0%
45073	Oconee County	21,912	21,436	20,742	20,277	19,827	18,907	17,721	17,806	-18.7%	0.5%
45075	Orangeburg County	27,598	26,383	26,209	25,143	25,011	25,144	25,406	26,492	-4.0%	4.3%
45077	Pickens County	29,319	27,975	26,814	26,771	26,532	26,850	27,998	28,583	-2.5%	2.1%
45079	Richland County	148,865	151,733	150,992	151,496	153,785	152,159	158,268	164,202	10.3%	3.7%
45081	Saluda County	3,752	3,708	3,797	3,689	3,452	3,491	3,620	3,446	-8.2%	-4.8%
45083	Spartanburg County	103,729	100,801	99,202	98,860	97,747	97,764	99,197	101,131	-2.5%	1.9%
45085	Sumter County	34,489	32,359	31,587	31,695	31,705	31,716	30,913	30,778	-10.8%	-0.4%
45087	Union County	7,885	7,452	7,040	6,586	6,279	6,057	5,537	5,223	-33.8%	-5.7%
45089	Williamsburg County	7,446	7,293	6,942	7,112	7,142	7,270	7,261	7,051	-5.3%	-2.9%
45091	York County	51,154	49,945	50,847	52,815	55,675	57,038	60,132	62,051	21.3%	3.2%
	South Carolina	1,507,621	1,477,097	1,454,665	1,454,329	1,476,668	1,500,676	1,534,903	1,563,381	3.7%	1.9%
	United States	110,023,983	109,304,802	107,577,281	107,065,553	108,490,066	110,611,016	112,718,858	114,014,680	3.6%	1.1%

Source: Quarterly Census of Employment and Wages (2000-2007). U.S. Department of Labor, Bureau of Labor Statistics.  
Available at: <http://www.bls.gov/cew/>

## Manufacturing Employment

FIPS	County	Year								Percent Change	
		2000	2001	2002	2003	2004	2005	2006	2007	2000-2007	2006-2007
45001	Abbeville County	3,527	3,253	2,826	2,659	2,655	2,617	2,400	2,137	-39.4%	-11.0%
45003	Aiken County	8,960	8,960	8,433	8,288	8,231	8,036	7,500	7,157	-20.1%	-4.6%
45005	Allendale County	1,386	1,350	1,247	1,104	1,079	1,063	1,141	1,241	-10.5%	8.8%
45007	Anderson County	19,027	17,529	16,025	14,067	14,119	14,334	13,947	13,345	-29.9%	-4.3%
45009	Bamberg County	1,189	1,125	1,011	853	862	865	846	810	-31.9%	-4.3%
45011	Barnwell County	3,564	3,297	2,932	2,797	2,742	2,677	2,414	2,163	-39.3%	-10.4%
45013	Beaufort County	1,035	966	913	962	1,011	976	1,011	975	-5.8%	-3.6%
45015	Berkeley County	7,817	7,554	7,188	7,062	6,322	6,274	6,321	6,214	-20.5%	-1.7%
45017	Calhoun County	1,714	1,515	1,391	1,426	1,415	1,409	1,439	1,403	-18.1%	-2.5%
45019	Charleston County	9,567	9,084	8,444	8,342	9,021	9,474	9,824	11,363	18.8%	15.7%
45021	Cherokee County	8,798	7,919	6,807	6,535	6,225	6,274	6,306	6,405	-27.2%	1.6%
45023	Chester County	5,463	4,977	4,350	4,008	3,902	4,165	3,892	3,171	-42.0%	-18.5%
45025	Chesterfield County	7,119	6,625	6,156	5,736	5,399	5,006	5,113	5,080	-28.6%	-0.6%
45027	Clarendon County	1,578	1,357	1,240	1,222	1,267	1,155	1,074	967	-38.7%	-10.0%
45029	Colleton County	1,847	1,634	1,588	1,569	1,632	1,636	1,769	1,368	-25.9%	-22.7%
45031	Darlington County	6,960	6,587	6,229	5,910	5,685	5,745	5,592	5,215	-25.1%	-6.7%
45033	Dillon County	3,289	2,884	2,881	2,907	3,036	2,629	2,609	2,401	-27.0%	-8.0%
45035	Dorchester County	4,828	5,052	5,198	5,097	5,474	5,406	5,079	4,837	0.2%	-4.8%
45037	Edgefield County	1,881	1,465	1,317	1,354	1,388	1,247	1,221	1,305	-30.6%	6.9%
45039	Fairfield County	2,418	1,951	1,661	845	735	819	758	665	-72.5%	-12.3%
45041	Florence County	11,105	10,870	10,187	9,413	8,783	8,703	8,486	8,161	-26.5%	-3.8%
45043	Georgetown County	3,232	2,893	2,498	2,072	2,058	2,190	2,205	2,204	-31.8%	0.0%
45045	Greenville County	44,268	42,908	38,429	37,360	35,286	34,331	30,955	30,600	-30.9%	-1.1%
45047	Greenwood County	10,631	10,362	9,245	8,571	8,258	7,730	7,505	6,988	-34.3%	-6.9%
45049	Hampton County	1,127	1,069	1,054	870	815	890	879	808	-28.3%	-8.1%
45051	Horry County	6,659	5,606	5,017	4,486	4,335	4,146	4,295	4,342	-34.8%	1.1%
45053	Jasper County	452	372	459	457	486	503	666	593	31.2%	-11.0%
45055	Kershaw County	4,921	4,689	4,540	4,606	4,277	4,046	3,885	3,956	-19.6%	1.8%
45057	Lancaster County	6,169	5,925	5,630	4,689	4,489	4,346	3,952	3,221	-47.8%	-18.5%
45059	Laurens County	6,489	5,894	5,122	3,922	4,047	4,453	4,414	4,719	-27.3%	6.9%
45061	Lee County	425	357	439	364	380	432	412	419	-1.4%	1.7%
45063	Lexington County	13,734	13,470	13,142	11,807	11,876	11,909	11,701	11,987	-12.7%	2.4%
45065	McCormick County	407	352	331	313	281	254	308	277	-31.9%	-10.1%
45067	Marion County	4,429	3,485	3,151	2,899	2,838	2,313	2,038	1,669	-62.3%	-18.1%
45069	Marlboro County	3,015	3,171	3,141	3,096	3,078	3,068	3,048	2,511	-16.7%	-17.6%
45071	Newberry County	4,712	4,497	4,066	4,080	4,381	4,268	4,482	4,845	2.8%	8.1%
45073	Oconee County	9,656	8,914	8,026	7,460	7,274	6,627	5,630	5,283	-45.3%	-6.2%
45075	Orangeburg County	8,817	7,675	7,609	7,449	7,281	7,236	6,971	7,500	-14.9%	7.6%
45077	Pickens County	9,196	7,908	6,976	6,769	6,149	6,117	6,628	6,683	-27.3%	0.8%
45079	Richland County	12,458	11,967	11,587	12,176	11,189	11,333	11,375	11,350	-8.9%	-0.2%
45081	Saluda County	1,926	1,862	1,751	1,739	1,627	1,696	1,754	1,747	-9.3%	-0.4%
45083	Spartanburg County	36,437	34,859	32,344	31,587	30,419	29,253	27,725	27,579	-24.3%	-0.5%
45085	Sumter County	12,527	11,333	10,328	10,300	9,857	9,138	8,440	7,902	-36.9%	-6.4%
45087	Union County	3,853	3,394	3,217	3,074	2,717	2,471	2,069	1,949	-49.4%	-5.8%
45089	Williamsburg County	3,008	2,595	2,287	2,220	2,247	2,162	2,134	2,105	-30.0%	-1.4%
45091	York County	11,590	10,523	10,191	9,988	9,724	10,131	10,313	10,269	-11.4%	-0.4%
	South Carolina	335,118	313,735	290,107	276,080	267,426	262,714	253,811	249,647	-25.5%	-1.6%
	United States	17,314,423	16,386,001	15,209,192	14,459,712	14,257,380	14,190,394	14,110,663	13,834,745	-20.1%	-2.0%

Source: Quarterly Census of Employment and Wages (2000-2006). U.S. Department of Labor, Bureau of Labor Statistics.  
Available at: <http://www.bls.gov/cew/>

## Unemployment

FIPS	County	Year								Percent Change	
		2000	2001	2002	2003	2004	2005	2006	2007	2000-2006	2005-2006
45001	Abbeville County	456	803	930	1,042	977	933	1,050	986	116.2%	-6.1%
45003	Aiken County	2,588	3,379	3,495	3,695	4,170	4,351	4,749	4,146	60.2%	-12.7%
45005	Allendale County	188	220	252	290	317	349	388	390	107.4%	0.5%
45007	Anderson County	2,551	4,416	5,189	5,832	5,958	6,199	5,695	5,144	101.6%	-9.7%
45009	Bamberg County	325	419	435	499	468	566	634	599	84.3%	-5.5%
45011	Barnwell County	501	688	775	898	894	848	917	854	70.5%	-6.9%
45013	Beaufort County	1,576	1,968	2,248	2,672	2,926	3,003	2,982	2,885	83.1%	-3.3%
45015	Berkeley County	2,100	2,818	2,919	3,673	3,875	3,816	4,023	3,699	76.1%	-8.1%
45017	Calhoun County	263	415	446	478	468	520	501	459	74.5%	-8.4%
45019	Charleston County	4,902	6,173	7,135	8,380	8,890	9,106	8,448	7,804	59.2%	-7.6%
45021	Cherokee County	1,054	1,768	2,008	2,105	2,221	1,967	1,908	1,794	70.2%	-6.0%
45023	Chester County	819	1,239	1,570	1,713	1,540	1,462	1,633	1,764	115.4%	8.0%
45025	Chesterfield County	874	1,400	1,447	1,851	1,824	1,708	1,755	1,512	73.0%	-13.8%
45027	Clarendon County	691	952	977	1,102	1,128	1,236	1,180	1,117	61.6%	-5.3%
45029	Colleton County	596	789	962	1,167	1,184	1,176	1,087	1,066	78.9%	-1.9%
45031	Darlington County	1,507	1,928	2,152	2,543	2,532	2,664	2,359	2,113	40.2%	-10.4%
45033	Dillon County	908	1,186	1,040	1,238	1,258	1,280	1,233	1,243	36.9%	0.8%
45035	Dorchester County	1,407	1,919	2,101	2,599	2,710	3,004	3,037	2,823	100.6%	-7.0%
45037	Edgefield County	370	486	512	525	638	800	843	709	91.6%	-15.9%
45039	Fairfield County	539	934	952	1,196	900	886	1,017	998	85.2%	-1.9%
45041	Florence County	2,430	3,239	3,917	4,725	5,133	5,509	4,475	4,004	64.8%	-10.5%
45043	Georgetown County	1,373	1,917	2,167	2,654	2,658	2,481	2,072	1,903	38.6%	-8.2%
45045	Greenville County	5,294	7,552	9,693	11,045	12,132	11,568	11,479	10,751	103.1%	-6.3%
45047	Greenwood County	1,370	2,212	2,837	2,960	2,824	2,950	2,498	2,250	64.2%	-9.9%
45049	Hampton County	352	497	604	747	722	647	566	556	58.0%	-1.8%
45051	Horry County	3,733	5,043	5,494	6,362	6,891	6,998	7,010	6,729	80.3%	-4.0%
45053	Jasper County	324	391	474	565	544	522	490	484	49.4%	-1.2%
45055	Kershaw County	996	1,378	1,642	1,746	1,742	1,903	1,858	1,672	67.9%	-10.0%
45057	Lancaster County	1,085	1,625	1,946	2,620	2,629	2,491	2,725	2,845	162.2%	4.4%
45059	Laurens County	1,096	2,202	2,547	2,475	2,354	2,225	2,296	2,521	130.0%	9.8%
45061	Lee County	460	572	605	696	716	787	793	708	53.9%	-10.7%
45063	Lexington County	3,137	4,151	4,648	5,496	6,088	6,247	6,048	5,659	80.4%	-6.4%
45065	McCormick County	233	353	398	454	385	397	392	367	57.5%	-6.4%
45067	Marion County	1,421	1,778	1,539	1,833	1,917	1,883	1,595	1,561	9.9%	-2.1%
45069	Marlboro County	818	1,170	1,215	1,630	1,613	1,429	1,401	1,478	80.7%	5.5%
45071	Newberry County	717	1,064	1,251	1,317	1,282	1,234	1,146	1,064	48.4%	-7.2%
45073	Oconee County	1,116	1,733	2,128	2,393	2,357	2,751	2,724	2,177	95.1%	-20.1%
45075	Orangeburg County	2,327	3,398	3,504	3,983	3,742	3,909	3,652	3,480	49.5%	-4.7%
45077	Pickens County	1,721	2,848	3,317	3,770	3,835	3,741	3,561	3,088	79.4%	-13.3%
45079	Richland County	5,196	6,594	7,587	9,231	10,088	10,194	10,140	9,792	88.5%	-3.4%
45081	Saluda County	336	477	532	573	686	617	580	510	51.8%	-12.1%
45083	Spartanburg County	4,554	6,864	8,589	9,344	9,941	9,855	8,821	7,902	73.5%	-10.4%
45085	Sumter County	1,877	2,827	3,106	3,351	3,568	3,951	3,531	3,309	76.3%	-6.3%
45087	Union County	713	1,244	1,431	1,484	1,575	1,374	1,327	1,109	55.5%	-16.4%
45089	Williamsburg County	1,126	1,520	1,608	1,980	1,819	1,741	1,538	1,434	27.4%	-6.8%
45091	York County	2,801	4,263	5,883	6,833	6,820	6,414	6,366	5,804	107.2%	-8.8%
	South Carolina	70,821	100,811	116,205	133,767	138,938	139,693	134,523	125,262	76.9%	-6.9%
	United States	5,692,000	6,801,000	8,378,000	8,774,000	8,149,000	7,591,000	7,001,000	7,078,000	24.3%	1.1%

Source: Local Area Unemployment Statistics. U.S. Department of Labor, Bureau of Labor Statistics.  
Available at: <http://www.bls.gov/lau/home.htm>

## Unemployment Rate

FIPS	County	Year									Rate Change	
		2000	2001	2002	2003	2004	2005	2006	2007	2000-2006	2005-2006	
45001	Abbeville County	3.7	6.5	7.9	8.8	8.2	7.7	8.7	8.5		4.8	-0.2
45003	Aiken County	3.7	5.0	5.0	5.2	5.7	5.8	6.3	5.5		1.8	-0.8
45005	Allendale County	5.1	6.1	7.2	8.5	9.6	10.6	10.0	10.9		5.8	0.9
45007	Anderson County	3.0	5.3	6.3	7.1	7.1	7.3	6.7	6.0		3.0	-0.7
45009	Bamberg County	5.0	6.6	6.9	7.6	7.3	8.6	9.7	9.5		4.5	-0.2
45011	Barnwell County	4.9	6.9	8.0	9.3	9.5	9.0	9.8	9.6		4.7	-0.2
45013	Beaufort County	3.1	3.9	4.2	4.7	4.9	4.9	4.7	4.4		1.3	-0.3
45015	Berkeley County	3.2	4.4	4.4	5.4	5.5	5.3	5.5	4.9		1.7	-0.6
45017	Calhoun County	3.7	5.9	6.4	6.8	6.6	7.3	7.1	6.4		2.7	-0.7
45019	Charleston County	3.2	4.1	4.6	5.3	5.4	5.4	5.0	4.5		1.3	-0.5
45021	Cherokee County	4.1	7.0	8.2	8.6	8.8	7.9	7.6	7.1		3.0	-0.5
45023	Chester County	5.0	7.7	10.0	10.9	9.8	9.2	10.1	11.2		6.2	1.1
45025	Chesterfield County	4.5	7.4	7.8	9.8	10.0	9.4	9.4	8.1		3.6	-1.3
45027	Clarendon County	5.3	7.5	7.7	8.6	8.9	9.7	9.1	8.7		3.4	-0.4
45029	Colleton County	3.7	5.0	6.0	7.2	7.2	7.1	6.4	6.4		2.7	0.0
45031	Darlington County	4.8	6.3	7.0	8.1	8.2	8.7	7.6	6.7		1.9	-0.9
45033	Dillon County	6.7	9.2	8.0	9.3	9.7	9.4	9.2	9.3		2.6	0.1
45035	Dorchester County	3.0	4.1	4.3	5.1	5.1	5.3	5.0	4.5		1.5	-0.5
45037	Edgefield County	3.6	4.8	5.0	4.9	5.8	7.1	7.6	6.4		2.8	-1.2
45039	Fairfield County	4.9	8.4	8.5	10.5	7.9	7.8	8.9	8.6		3.7	-0.3
45041	Florence County	4.0	5.5	6.6	7.7	8.4	8.9	7.2	6.3		2.3	-0.9
45043	Georgetown County	5.3	7.4	8.3	9.8	9.5	8.6	7.0	6.4		1.1	-0.6
45045	Greenville County	2.6	3.7	4.8	5.5	5.9	5.5	5.3	4.9		2.3	-0.4
45047	Greenwood County	4.2	6.8	8.9	9.3	8.7	9.0	7.8	7.2		3.0	-0.6
45049	Hampton County	4.2	6.2	7.4	9.3	9.3	8.3	7.0	7.0		2.8	0.0
45051	Horry County	3.5	4.9	5.2	5.7	5.9	5.7	5.5	5.1		1.6	-0.4
45053	Jasper County	3.5	4.3	5.1	5.8	5.5	5.1	4.8	4.6		1.1	-0.2
45055	Kershaw County	3.7	5.1	6.1	6.3	6.2	6.5	6.3	5.6		1.9	-0.7
45057	Lancaster County	3.6	5.4	6.6	8.9	8.8	8.3	8.9	9.5		5.9	0.6
45059	Laurens County	3.2	6.5	7.6	7.5	7.1	6.7	6.8	7.3		4.1	0.5
45061	Lee County	5.6	7.0	7.5	8.4	8.7	9.4	9.4	8.6		3.0	-0.8
45063	Lexington County	2.6	3.6	3.9	4.5	4.9	4.9	4.6	4.3		1.7	-0.3
45065	McCormick County	6.2	9.6	10.9	12.5	11.1	11.1	10.8	10.3		4.1	-0.5
45067	Marion County	9.2	12.3	11.0	12.8	13.5	13.6	11.9	12.0		2.8	0.1
45069	Marlboro County	6.7	9.5	10.0	12.9	12.9	11.3	11.0	12.2		5.5	1.2
45071	Newberry County	4.1	6.2	7.3	7.4	7.3	6.9	6.4	5.9		1.8	-0.5
45073	Oconee County	3.4	5.4	6.7	7.5	7.4	8.6	8.8	7.2		3.8	-1.6
45075	Orangeburg County	5.7	8.6	8.8	9.9	9.4	9.6	9.1	8.5		2.8	-0.6
45077	Pickens County	3.0	5.0	5.9	6.7	6.7	6.5	6.1	5.3		2.3	-0.8
45079	Richland County	3.2	4.2	4.7	5.6	6.0	5.9	5.7	5.5		2.3	-0.2
45081	Saluda County	3.6	5.2	5.8	6.2	7.4	6.6	6.2	5.4		1.8	-0.8
45083	Spartanburg County	3.5	5.4	6.7	7.2	7.5	7.4	6.6	6.0		2.5	-0.6
45085	Sumter County	4.2	6.5	7.2	7.5	7.8	8.5	7.7	7.3		3.1	-0.4
45087	Union County	5.0	8.9	10.5	11.1	12.1	10.8	10.8	9.5		4.5	-1.3
45089	Williamsburg County	7.4	10.2	10.8	12.7	12.0	11.1	9.8	9.2		1.8	-0.6
45091	York County	3.2	4.8	6.5	7.3	7.2	6.6	6.3	5.6		2.4	-0.7
	South Carolina	3.6	5.2	5.9	6.7	6.8	6.7	6.4	5.9		2.3	-0.5
	United States	4.0	4.7	5.8	6.0	5.5	5.1	4.6	4.6		0.6	0.0

Source: Local Area Unemployment Statistics. U.S. Department of Labor, Bureau of Labor Statistics.  
Available at: <http://www.bls.gov/lau/home.htm>

## Earnings per Worker

FIPS	County	Year							Percent Change	
		2000	2001	2002	2003	2004	2005	2006	2000-2006	2005-2006
45001	Abbeville County	33,037	30,900	29,630	29,349	29,556	29,372	29,545	-10.6%	0.6%
45003	Aiken County	41,584	41,351	42,238	42,072	41,985	41,970	41,319	-0.6%	-1.6%
45005	Allendale County	31,615	31,458	32,601	32,884	33,746	35,003	37,434	18.4%	6.9%
45007	Anderson County	31,138	31,652	31,207	31,377	31,346	30,983	30,951	-0.6%	-0.1%
45009	Bamberg County	25,135	24,939	25,750	25,139	25,469	24,899	25,427	1.2%	2.1%
45011	Barnwell County	41,382	28,812	28,858	29,202	29,382	29,407	29,307	-29.2%	-0.3%
45013	Beaufort County	31,541	32,109	31,699	32,335	33,059	33,804	34,204	8.4%	1.2%
45015	Berkeley County	34,698	34,869	35,491	36,302	36,868	37,156	37,037	6.7%	-0.3%
45017	Calhoun County	33,034	33,437	33,251	32,571	34,579	33,868	34,881	5.6%	3.0%
45019	Charleston County	33,575	34,656	35,596	35,830	36,122	36,958	37,401	11.4%	1.2%
45021	Cherokee County	31,827	31,403	31,553	32,128	32,742	31,910	31,573	-0.8%	-1.1%
45023	Chester County	31,138	30,681	32,664	32,599	33,136	33,593	33,465	7.5%	-0.4%
45025	Chesterfield County	30,744	30,845	30,934	31,278	30,735	29,912	29,638	-3.6%	-0.9%
45027	Clarendon County	24,522	25,240	25,533	26,039	26,551	26,517	26,176	6.7%	-1.3%
45029	Colleton County	27,818	27,897	27,484	27,533	27,899	27,756	27,898	0.3%	0.5%
45031	Darlington County	34,975	35,111	35,454	35,904	35,966	36,291	36,773	5.1%	1.3%
45033	Dillon County	24,652	25,071	25,825	26,285	26,417	25,963	25,841	4.8%	-0.5%
45035	Dorchester County	29,566	29,808	29,711	30,147	30,885	30,635	30,820	4.2%	0.6%
45037	Edgefield County	28,217	27,959	28,224	28,819	28,657	28,850	28,492	1.0%	-1.2%
45039	Fairfield County	41,331	36,961	37,727	37,564	37,121	36,871	36,523	-11.6%	-0.9%
45041	Florence County	33,057	33,566	33,873	33,706	34,244	33,973	34,278	3.7%	0.9%
45043	Georgetown County	28,899	29,012	30,327	30,628	30,751	31,733	30,962	7.1%	-2.4%
45045	Greenville County	37,476	37,957	38,194	37,991	38,063	37,931	37,906	1.1%	-0.1%
45047	Greenwood County	33,495	32,914	32,985	33,050	32,923	32,316	32,469	-3.1%	0.5%
45049	Hampton County	30,988	32,505	32,237	32,147	33,236	32,952	32,860	6.0%	-0.3%
45051	Horry County	27,846	28,310	28,585	28,989	29,050	28,978	29,478	5.9%	1.7%
45053	Jasper County	26,595	26,916	27,613	28,245	30,786	31,592	33,026	24.2%	4.5%
45055	Kershaw County	31,332	30,997	31,366	32,096	31,846	31,921	31,758	1.4%	-0.5%
45057	Lancaster County	31,780	32,267	32,173	32,661	32,820	33,713	33,228	4.6%	-1.4%
45059	Laurens County	30,330	29,862	29,760	29,893	30,454	30,260	30,140	-0.6%	-0.4%
45061	Lee County	26,090	26,002	26,001	25,735	25,929	26,884	26,613	2.0%	-1.0%
45063	Lexington County	32,492	32,143	32,292	32,615	33,683	33,363	33,428	2.9%	0.2%
45065	McCormick County	26,072	26,464	26,873	27,600	27,733	27,182	27,440	5.2%	1.0%
45067	Marion County	26,875	26,970	27,174	27,282	27,198	27,230	26,904	0.1%	-1.2%
45069	Marlboro County	29,744	29,660	30,280	29,979	30,590	31,121	31,362	5.4%	0.8%
45071	Newberry County	28,111	28,611	29,068	29,108	29,497	29,156	29,237	4.0%	0.3%
45073	Oconee County	34,543	34,688	34,642	34,690	35,563	34,870	36,162	4.7%	3.7%
45075	Orangeburg County	28,390	28,923	29,899	30,332	31,246	30,721	30,681	8.1%	-0.1%
45077	Pickens County	29,239	28,937	29,596	29,924	29,956	30,168	30,164	3.2%	0.0%
45079	Richland County	35,417	35,615	36,314	36,704	37,644	37,979	38,751	9.4%	2.0%
45081	Saluda County	24,586	25,118	24,613	24,907	25,963	25,907	25,031	1.8%	-3.4%
45083	Spartanburg County	36,386	36,913	37,658	37,275	38,010	37,494	37,988	4.4%	1.3%
45085	Sumter County	29,556	29,598	30,747	31,061	31,572	31,452	32,301	9.3%	2.7%
45087	Union County	28,031	28,206	28,477	28,729	28,871	28,733	28,486	1.6%	-0.9%
45089	Williamsburg County	27,290	27,439	27,846	27,836	28,119	28,241	28,013	2.6%	-0.8%
45091	York County	34,243	34,942	34,607	34,119	35,028	35,650	35,436	3.5%	-0.6%
	South Carolina	33,367	33,626	34,027	34,183	34,617	34,694	34,925	4.7%	0.7%
	United States	41,803	41,659	41,664	41,885	42,599	42,649	43,187	3.3%	1.3%

\*Dollar estimates adjusted to 2007 dollars

Source : Bureau of Economic Analysis, Regional Economic Information System (REIS): TableCA30  
Available at: <http://www.bea.gov/bea/regional/reis/>

## Per Capita Personal Income

FIPS	County	Year							Percent Change	
		2000	2001	2002	2003	2004	2005	2006	2000-2006	2005-2006
45001	Abbeville County	27,646	27,138	24,756	22,662	23,243	23,557	23,832	-13.8%	1.2%
45003	Aiken County	29,917	30,687	30,853	30,507	30,612	30,782	30,764	2.8%	-0.1%
45005	Allendale County	19,537	19,701	19,233	19,524	19,778	20,041	23,150	18.5%	15.5%
45007	Anderson County	29,228	29,268	28,892	28,567	28,450	28,639	28,751	-1.6%	0.4%
45009	Bamberg County	20,964	20,795	20,803	21,217	22,042	22,039	22,618	7.9%	2.6%
45011	Barnwell County	26,777	21,919	21,874	21,644	21,808	21,912	22,524	-15.9%	2.8%
45013	Beaufort County	39,056	40,056	38,975	39,037	41,132	42,471	42,912	9.9%	1.0%
45015	Berkeley County	24,243	24,897	26,057	26,592	27,036	28,029	27,840	14.8%	-0.7%
45017	Calhoun County	26,769	27,199	27,216	28,465	29,287	30,851	31,688	18.4%	2.7%
45019	Charleston County	34,560	34,340	34,047	33,840	34,856	36,792	37,361	8.1%	1.5%
45021	Cherokee County	24,465	24,075	23,887	23,970	24,003	23,976	24,357	-0.4%	1.6%
45023	Chester County	24,025	24,484	25,163	25,117	25,907	26,465	27,060	12.6%	2.2%
45025	Chesterfield County	23,594	23,610	23,159	23,677	24,027	23,357	23,869	1.2%	2.2%
45027	Clarendon County	21,565	21,882	21,602	22,116	22,866	22,588	22,987	6.6%	1.8%
45029	Colleton County	23,008	23,270	23,009	23,105	23,824	24,020	25,249	9.7%	5.1%
45031	Darlington County	26,647	26,826	26,702	26,892	27,523	27,575	28,140	5.6%	2.0%
45033	Dillon County	21,654	21,798	21,509	22,263	22,095	22,109	22,540	4.1%	1.9%
45035	Dorchester County	26,456	26,577	27,253	27,204	27,744	28,027	28,188	6.5%	0.6%
45037	Edgefield County	22,810	23,448	23,199	23,214	23,752	24,354	25,321	11.0%	4.0%
45039	Fairfield County	24,153	24,327	24,351	24,077	24,912	25,464	26,151	8.3%	2.7%
45041	Florence County	28,647	29,036	29,305	29,312	30,015	30,258	31,198	8.9%	3.1%
45043	Georgetown County	29,238	30,246	30,336	30,337	31,537	32,645	33,450	14.4%	2.5%
45045	Greenville County	35,746	34,263	33,707	33,309	33,674	34,177	34,413	-3.7%	0.7%
45047	Greenwood County	27,818	27,421	27,103	26,758	27,084	27,060	27,284	-1.9%	0.8%
45049	Hampton County	22,339	22,484	22,553	22,356	22,438	22,588	23,313	4.4%	3.2%
45051	Horry County	28,807	28,247	28,003	28,145	28,258	28,394	28,601	-0.7%	0.7%
45053	Jasper County	21,317	21,205	21,770	22,945	24,873	26,021	26,994	26.6%	3.7%
45055	Kershaw County	28,131	28,755	29,285	29,292	30,352	30,372	30,924	9.9%	1.8%
45057	Lancaster County	24,795	24,028	23,127	22,483	22,530	22,387	22,109	-10.8%	-1.2%
45059	Laurens County	24,543	24,567	24,145	23,958	25,052	25,334	25,872	5.4%	2.1%
45061	Lee County	20,737	20,843	20,364	21,192	21,421	21,962	22,216	7.1%	1.2%
45063	Lexington County	34,807	33,562	33,535	33,493	33,824	34,090	34,603	-0.6%	1.5%
45065	McCormick County	20,850	20,833	20,594	20,508	21,744	22,138	22,225	6.6%	0.4%
45067	Marion County	21,607	21,687	21,876	22,419	22,246	21,757	22,223	2.9%	2.1%
45069	Marlboro County	20,290	20,880	20,406	20,967	21,084	21,653	21,249	4.7%	-1.9%
45071	Newberry County	24,814	25,040	24,039	24,407	25,414	25,442	25,876	4.3%	1.7%
45073	Oconee County	29,032	29,494	29,706	29,728	30,458	30,205	30,562	5.3%	1.2%
45075	Orangeburg County	23,739	24,334	24,793	25,008	25,494	25,552	26,255	10.6%	2.8%
45077	Pickens County	25,345	26,050	26,229	26,067	25,851	25,936	26,320	3.8%	1.5%
45079	Richland County	32,626	32,271	32,262	31,786	32,508	33,426	34,101	4.5%	2.0%
45081	Saluda County	25,281	25,098	24,691	25,559	27,190	27,417	28,389	12.3%	3.5%
45083	Spartanburg County	29,294	28,773	29,026	28,484	28,601	28,855	29,066	-0.8%	0.7%
45085	Sumter County	24,737	24,425	25,087	25,331	26,119	26,362	26,989	9.1%	2.4%
45087	Union County	24,297	25,214	25,498	25,381	25,767	25,904	26,041	7.2%	0.5%
45089	Williamsburg County	19,366	20,346	19,947	20,961	20,864	21,440	21,637	11.7%	0.9%
45091	York County	31,236	30,806	31,490	31,253	31,763	32,603	32,559	4.2%	-0.1%
	South Carolina	29,407	29,239	29,215	29,132	29,679	30,215	30,615	4.1%	1.3%
	United States	35,936	35,795	35,522	35,501	36,357	36,900	37,760	5.1%	2.3%

\*Dollar estimates adjusted to 2007 dollars

Source : Bureau of Economic Analysis, Regional Economic Information System (REIS): TableCA30  
Available at: <http://www.bea.gov/beat/regional/reis/>

## Transfer Payments (x\$1,000)

FIPS	County	Year						Percent Change		
		2000	2001	2002	2003	2004	2005	2006	2000-2006	2005-2006
45001	Abbeville County	176,419	196,536	169,478	132,112	139,237	142,097	147,120	-16.6%	3.5%
45003	Aiken County	636,292	685,595	738,684	757,277	803,607	834,369	891,688	40.1%	6.9%
45005	Allendale County	61,750	64,321	68,539	69,533	72,875	72,465	72,612	17.6%	0.2%
45007	Anderson County	721,633	784,689	851,236	867,557	914,016	952,932	990,749	37.3%	4.0%
45009	Bamberg County	92,335	98,566	104,123	103,618	107,835	110,468	115,326	24.9%	4.4%
45011	Barnwell County	120,937	128,078	135,003	136,930	140,427	141,892	152,822	26.4%	7.7%
45013	Beaufort County	512,376	558,015	606,844	639,660	677,592	725,715	790,504	54.3%	8.9%
45015	Berkeley County	448,434	495,129	544,694	564,802	604,109	628,678	659,118	47.0%	4.8%
45017	Calhoun County	63,314	67,836	73,252	75,960	80,845	82,967	83,544	32.0%	0.7%
45019	Charleston County	1,309,807	1,398,905	1,496,545	1,525,423	1,603,039	1,642,733	1,730,614	32.1%	5.3%
45021	Cherokee County	224,736	244,316	264,825	271,235	286,323	297,275	310,661	38.2%	4.5%
45023	Chester County	165,852	178,517	194,090	196,560	206,303	209,829	217,390	31.1%	3.6%
45025	Chesterfield County	208,716	220,725	234,054	240,561	253,990	259,048	269,269	29.0%	3.9%
45027	Clarendon County	173,085	186,056	201,124	206,852	218,706	225,156	231,360	33.7%	2.8%
45029	Colleton County	204,700	217,505	233,884	240,614	252,987	257,527	269,854	31.8%	4.8%
45031	Darlington County	339,971	363,806	386,510	391,591	407,128	419,455	434,211	27.7%	3.5%
45033	Dillon County	172,966	182,100	189,083	192,234	200,189	206,157	211,961	22.5%	2.8%
45035	Dorchester County	361,361	395,776	431,131	443,605	491,302	528,038	540,035	49.4%	2.3%
45037	Edgefield County	87,087	91,633	95,642	98,731	104,710	108,873	112,770	29.5%	3.6%
45039	Fairfield County	115,319	125,149	133,468	137,143	142,389	146,468	150,390	30.4%	2.7%
45041	Florence County	643,194	690,454	740,474	755,348	810,861	839,968	875,459	36.1%	4.2%
45043	Georgetown County	327,390	360,651	390,402	405,878	428,510	449,876	472,522	44.3%	5.0%
45045	Greenville County	1,462,403	1,576,844	1,705,742	1,742,921	1,864,359	1,931,037	2,053,933	40.4%	6.4%
45047	Greenwood County	296,695	320,089	348,061	353,498	369,715	380,214	395,291	33.2%	4.0%
45049	Hampton County	108,498	114,517	123,688	126,473	131,963	133,128	139,430	28.5%	4.7%
45051	Horry County	886,417	970,801	1,056,405	1,101,011	1,191,105	1,275,475	1,363,318	53.8%	6.9%
45053	Jasper County	74,070	81,149	87,598	92,490	102,686	105,710	109,693	48.1%	3.8%
45055	Kershaw County	223,107	241,344	259,720	267,043	288,411	299,955	319,590	43.2%	6.5%
45057	Lancaster County	264,950	291,402	318,169	329,859	345,374	354,706	376,706	42.2%	6.2%
45059	Laurens County	333,772	362,493	390,632	393,159	424,186	434,503	446,053	33.6%	2.7%
45061	Lee County	104,514	111,554	118,442	120,608	128,778	133,974	134,403	28.6%	0.3%
45063	Lexington County	739,975	804,842	875,210	907,606	975,939	1,020,237	1,088,571	47.1%	6.7%
45065	McCormick County	54,046	58,441	62,382	62,525	65,109	68,191	71,763	32.8%	5.2%
45067	Marion County	208,522	222,910	234,596	240,893	246,637	246,668	252,940	21.3%	2.5%
45069	Marlboro County	154,104	163,060	171,135	175,571	183,154	186,006	193,391	25.5%	4.0%
45071	Newberry County	171,264	183,156	195,976	199,089	209,157	212,273	222,379	29.8%	4.8%
45073	Oconee County	308,071	336,167	367,630	377,704	401,263	420,573	443,500	44.0%	5.5%
45075	Orangeburg County	468,332	504,309	536,293	545,385	567,024	582,712	597,795	27.6%	2.6%
45077	Pickens County	398,452	436,728	472,683	482,513	516,945	538,553	570,678	43.2%	6.0%
45079	Richland County	1,277,492	1,363,110	1,471,938	1,492,221	1,585,383	1,630,361	1,696,021	32.8%	4.0%
45081	Saluda County	77,203	82,594	87,164	87,913	93,734	97,186	101,649	31.7%	4.6%
45083	Spartanburg County	1,066,032	1,153,296	1,249,886	1,269,024	1,331,709	1,378,196	1,449,182	35.9%	5.2%
45085	Sumter County	455,708	493,528	532,645	540,883	572,480	590,671	609,820	33.8%	3.2%
45087	Union County	161,875	175,141	189,343	190,109	198,529	200,655	207,383	28.1%	3.4%
45089	Williamsburg County	202,340	213,449	225,675	227,150	233,440	235,586	241,354	19.3%	2.4%
45091	York County	601,075	655,413	724,721	751,698	792,997	832,823	895,476	49.0%	7.5%
	South Carolina	17,266,590	18,650,694	20,088,821	20,530,570	21,767,057	22,571,378	23,710,297	37.3%	5.0%
	United States	1,225,877,667	1,307,996,694	1,406,046,149	1,449,141,409	1,496,058,694	1,537,474,372	1,592,182,921	29.9%	3.6%

\*Dollar estimates are adjusted to 2007 dollar values

Source: Bureau of Economic Analysis, Regional Economic Information System (REIS): TableCA35  
Available at: <http://www.bea.gov/beat/regional/reis/>

## Median Income

FIPS	County	Year						Percent Change	
		2000	2001	2002	2003	2004	2005	2000-2005	2004-2005
45001	Abbeville County	40,107	36,676	36,010	34,334	34,424	34,489	-14.0%	0.2%
45003	Aiken County	46,854	44,590	44,412	44,353	43,962	44,457	-5.1%	1.1%
45005	Allendale County	26,669	24,702	23,889	23,671	23,629	23,878	-10.5%	1.1%
45007	Anderson County	45,720	43,647	42,880	43,221	42,442	41,113	-10.1%	-3.1%
45009	Bamberg County	30,197	28,151	28,007	28,014	28,152	27,921	-7.5%	-0.8%
45011	Barnwell County	35,420	33,360	31,818	29,971	29,849	32,014	-9.6%	7.3%
45013	Beaufort County	55,973	53,233	52,812	52,589	53,319	52,699	-5.8%	-1.2%
45015	Berkeley County	48,535	46,216	46,287	47,393	47,796	47,491	-2.2%	-0.6%
45017	Calhoun County	39,665	37,668	37,166	38,068	38,194	37,899	-4.5%	-0.8%
45019	Charleston County	47,940	45,203	44,324	44,307	43,863	45,083	-6.0%	2.8%
45021	Cherokee County	41,641	38,986	38,301	38,701	38,828	37,747	-9.3%	-2.8%
45023	Chester County	39,177	37,094	36,553	37,263	37,458	35,370	-9.7%	-5.6%
45025	Chesterfield County	36,368	34,417	34,006	34,387	33,893	33,471	-8.0%	-1.2%
45027	Clarendon County	32,893	30,754	29,846	30,160	30,175	29,667	-9.8%	-1.7%
45029	Colleton County	35,843	33,789	33,330	33,535	33,733	32,974	-8.0%	-2.3%
45031	Darlington County	37,771	35,940	35,471	35,398	35,104	35,819	-5.2%	2.0%
45033	Dillon County	31,996	30,243	29,450	30,207	29,975	30,146	-5.8%	0.6%
45035	Dorchester County	51,482	49,268	49,428	50,217	51,725	52,697	2.4%	1.9%
45037	Edgefield County	41,479	39,850	39,529	38,926	39,525	41,773	0.7%	5.7%
45039	Fairfield County	36,634	34,562	34,530	34,848	34,500	34,767	-5.1%	0.8%
45041	Florence County	41,877	39,839	39,197	39,381	39,334	39,548	-5.6%	0.5%
45043	Georgetown County	43,824	40,642	40,348	41,100	41,358	37,211	-15.1%	-10.0%
45045	Greenville County	51,226	49,167	48,013	47,419	46,582	45,348	-11.5%	-2.7%
45047	Greenwood County	42,707	40,220	39,312	39,059	39,425	38,888	-8.9%	-1.4%
45049	Hampton County	35,033	32,696	31,868	31,872	31,963	33,239	-5.1%	4.0%
45051	Horry County	43,728	40,887	39,940	40,150	40,455	41,115	-6.0%	1.6%
45053	Jasper County	35,193	32,676	31,253	32,260	32,618	34,920	-0.8%	7.1%
45055	Kershaw County	47,048	45,054	44,995	45,444	45,268	43,438	-7.7%	-4.0%
45057	Lancaster County	42,119	39,613	38,838	38,684	39,366	38,288	-9.1%	-2.7%
45059	Laurens County	40,056	38,182	37,250	36,672	36,393	37,243	-7.0%	2.3%
45061	Lee County	31,967	29,870	28,979	29,372	29,283	28,906	-9.6%	-1.3%
45063	Lexington County	55,172	52,856	52,026	51,614	51,058	49,371	-10.5%	-3.3%
45065	McCormick County	37,913	34,786	34,351	34,305	34,551	34,323	-9.5%	-0.7%
45067	Marion County	31,791	29,631	28,823	29,615	29,189	28,965	-8.9%	-0.8%
45069	Marlboro County	32,385	30,419	29,958	30,389	29,994	27,928	-13.8%	-6.9%
45071	Newberry County	40,152	37,816	37,148	37,423	37,232	37,418	-6.8%	0.5%
45073	Oconee County	45,445	42,961	42,543	43,098	43,263	42,173	-7.2%	-2.5%
45075	Orangeburg County	36,050	33,751	32,990	33,171	32,862	33,072	-8.3%	0.6%
45077	Pickens County	45,291	43,155	42,706	42,691	41,928	43,256	-4.5%	3.2%
45079	Richland County	49,366	46,870	45,626	44,861	43,933	45,917	-7.0%	4.5%
45081	Saluda County	41,043	37,885	36,102	35,638	38,166	39,541	-3.7%	3.6%
45083	Spartanburg County	46,497	43,586	42,750	43,014	43,357	40,552	-12.8%	-6.5%
45085	Sumter County	40,079	37,684	36,821	37,032	37,164	36,358	-9.3%	-2.2%
45087	Union County	38,350	36,105	35,499	35,558	35,265	35,293	-8.0%	0.1%
45089	Williamsburg County	29,836	28,105	27,371	27,913	27,744	27,274	-8.6%	-1.7%
45091	York County	53,882	51,536	51,425	51,495	51,974	50,158	-6.9%	-3.5%
	South Carolina	44,892	43,263	43,153	42,824	43,306	41,911	-6.6%	-3.2%
	United States	50,559	49,439	48,878	48,813	48,662	49,093	-2.9%	0.9%

Source : U.S. Census Bureau, Small Area Income and Poverty Estimates.  
Available at: <http://www.census.gov/hhes/www/saie/tables.html>

## Poverty Rate

FIPS	County	Year						Rate Change	
		2000	2001	2002	2003	2004	2005	2000-2005	2004-2005
45001	Abbeville County	12.1	13.5	13.7	13.6	15.1	19.2	7.1	4.1
45003	Aiken County	12.1	12.8	13.1	13.5	14.5	15.4	3.3	0.9
45005	Allendale County	28.8	31.2	31.3	28.7	32.1	38.3	9.5	6.2
45007	Anderson County	10.5	11.7	12.2	11.9	13.6	15.6	5.1	2.0
45009	Bamberg County	21.2	22.1	22.0	21.2	23.1	27.2	6.0	4.1
45011	Barnwell County	17.5	18.3	17.6	17.2	19.2	23.3	5.8	4.1
45013	Beaufort County	10.3	11.6	11.3	11.0	11.4	11.5	1.2	0.1
45015	Berkeley County	11.3	11.8	11.9	11.7	12.7	13.4	2.1	0.7
45017	Calhoun County	15.1	16.2	14.9	14.3	15.8	15.0	-0.1	-0.8
45019	Charleston County	13.7	14.6	14.5	14.1	15.0	15.5	1.8	0.5
45021	Cherokee County	12.9	14.5	15.2	14.9	16.4	16.2	3.3	-0.2
45023	Chester County	14.2	15.2	15.6	15.6	16.5	19.2	5.0	2.7
45025	Chesterfield County	16.4	17.0	17.3	17.2	19.3	22.0	5.6	2.7
45027	Clarendon County	20.6	22.2	22.9	21.3	23.2	23.1	2.5	-0.1
45029	Colleton County	19.3	20.4	19.9	18.6	20.0	22.3	3.0	2.3
45031	Darlington County	17.9	18.2	18.4	18.3	19.9	21.2	3.3	1.3
45033	Dillon County	21.9	22.6	21.6	20.5	22.2	24.7	2.8	2.5
45035	Dorchester County	10.1	10.9	10.8	11.2	11.8	11.2	1.1	-0.6
45037	Edgefield County	15.7	16.7	16.6	15.8	17.2	17.8	2.1	0.6
45039	Fairfield County	15.8	17.0	16.2	16.0	17.8	19.7	3.9	1.9
45041	Florence County	15.9	16.7	16.6	16.4	17.8	17.4	1.5	-0.4
45043	Georgetown County	14.8	15.4	15.3	14.8	16.2	17.0	2.2	0.8
45045	Greenville County	9.8	10.7	11.5	12.0	13.0	12.9	3.1	-0.1
45047	Greenwood County	12.5	13.6	14.0	14.0	15.1	16.1	3.6	1.0
45049	Hampton County	20.0	21.5	21.6	19.4	21.6	23.9	3.9	2.3
45051	Horry County	12.6	14.3	13.8	13.1	13.9	15.2	2.6	1.3
45053	Jasper County	22.2	27.8	28.9	19.8	21.6	24.8	2.6	3.2
45055	Kershaw County	10.9	11.6	11.5	12.1	13.3	13.6	2.7	0.3
45057	Lancaster County	12.9	13.5	13.8	13.7	14.9	14.5	1.6	-0.4
45059	Laurens County	13.2	15.0	15.7	14.8	16.3	16.7	3.5	0.4
45061	Lee County	22.7	24.4	24.0	20.7	22.7	28.0	5.3	5.3
45063	Lexington County	9.0	9.8	10.2	10.5	11.3	11.7	2.7	0.4
45065	McCormick County	16.5	18.0	17.3	16.2	18.0	19.9	3.4	1.9
45067	Marion County	21.5	23.3	22.4	20.6	22.5	24.6	3.1	2.1
45069	Marlboro County	20.0	21.0	20.5	20.2	22.0	24.4	4.4	2.4
45071	Newberry County	13.5	14.6	14.6	14.6	16.3	16.8	3.3	0.5
45073	Oconee County	10.1	11.2	11.7	11.7	12.7	11.2	1.1	-1.5
45075	Orangeburg County	19.3	20.7	20.8	19.9	21.6	23.7	4.4	2.1
45077	Pickens County	10.2	11.6	11.9	11.5	13.7	13.7	3.5	0.0
45079	Richland County	11.9	12.9	13.4	13.9	15.1	14.3	2.4	-0.8
45081	Saluda County	15.2	18.2	17.6	15.2	15.7	18.1	2.9	2.4
45083	Spartanburg County	11.0	12.2	12.7	12.8	13.5	15.3	4.3	1.8
45085	Sumter County	15.2	16.3	16.5	16.3	17.7	18.0	2.8	0.3
45087	Union County	12.8	13.7	14.1	14.3	16.0	16.3	3.5	0.3
45089	Williamsburg County	24.0	24.6	24.0	23.0	25.8	29.7	5.7	3.9
45091	York County	9.1	10.0	10.7	11.3	12.0	12.0	2.9	0.0
	South Carolina	12.8	13.8	14.0	13.8	15.0	15.6	2.8	0.6
	United States	11.3	11.7	12.1	12.5	12.7	13.3	2.0	0.6

Source: U.S. Census Bureau, Small Area Income and Poverty Estimates.  
Available at: <http://www.census.gov/hhes/www/saipe/tables.html>

## Patents per County\*

FIPS	County	Year							
		2000	2001	2002	2003	2004	2005	2006	2007
45001	Abbeville County	1	0	1	0	1	0	0	0
45003	Aiken County	19	23	18	18	9	8	11	11
45005	Allendale County	0	0	0	1	0	0	0	0
45007	Anderson County	28	33	29	31	27	25	34	16
45009	Bamberg County	0	3	0	2	2	0	0	0
45011	Barnwell County	0	0	0	1	0	0	0	0
45013	Beaufort County	20	12	15	10	15	16	18	16
45015	Berkeley County	6	6	8	2	11	2	3	1
45017	Calhoun County	0	0	0	0	0	0	1	0
45019	Charleston County	68	52	72	53	48	49	37	25
45021	Cherokee County	2	0	1	3	1	0	3	0
45023	Chester County	2	2	0	0	1	0	1	0
45025	Chesterfield County	4	2	0	0	3	0	2	1
45027	Clarendon County	0	1	1	0	1	0	1	0
45029	Colleton County	2	1	1	3	1	1	0	1
45031	Darlington County	8	8	12	11	15	3	15	8
45033	Dillon County	0	0	0	0	1	2	0	0
45035	Dorchester County	9	8	13	8	12	7	12	14
45037	Edgefield County	1	1	2	0	1	1	1	2
45039	Fairfield County	1	0	0	0	0	0	2	0
45041	Florence County	34	22	22	16	22	22	32	22
45043	Georgetown County	4	4	4	4	0	5	3	1
45045	Greenville County	104	139	139	124	116	119	159	120
45047	Greenwood County	6	1	3	5	4	3	5	6
45049	Hampton County	1	2	0	1	2	1	1	0
45051	Horry County	2	8	13	11	11	11	12	12
45053	Jasper County	0	0	0	1	0	0	0	0
45055	Kershaw County	5	3	5	1	3	4	1	2
45057	Lancaster County	1	2	2	4	4	0	0	1
45059	Laurens County	1	2	2	0	2	0	4	1
45061	Lee County	1	0	0	0	0	0	0	0
45063	Lexington County	31	31	17	21	28	12	17	12
45065	McCormick County	0	1	0	0	0	0	1	0
45067	Marion County	0	0	0	0	0	0	0	0
45069	Marlboro County	1	0	0	1	0	0	0	0
45071	Newberry County	2	2	5	1	0	0	1	0
45073	Oconee County	14	17	15	15	14	9	10	13
45075	Orangeburg County	8	0	3	9	3	5	2	3
45077	Pickens County	26	34	37	40	28	22	29	22
45079	Richland County	33	42	33	39	34	30	42	27
45081	Saluda County	0	0	3	3	1	0	0	0
45083	Spartanburg County	59	73	86	99	76	77	83	50
45085	Sumter County	1	3	1	5	1	6	2	4
45087	Union County	1	1	1	1	0	0	1	1
45089	Williamsburg County	0	0	1	0	1	0	2	0
45091	York County	26	25	35	26	24	21	28	17
	South Carolina	532	565	600	570	523	462	577	409
	United States	85,068	87,600	86,971	87,893	84,271	74,637	89,823	79,527

\*Number of U.S. utility patents issued to South Carolina inventors. Origin of the patent is determined by county of residence of the first-named inventor.

Source: United States Patent and Trademark Office, Patent Electronic Business Center  
Available at: <http://www.uspto.gov/patft/index.html>

## Patents per 10,000 Employees\*

FIPS	County	Year							
		2000	2001	2002	2003	2004	2005	2006	2007
45001	Abbeville County	1.6	0.0	1.9	0.0	1.9	0.0	0.0	0.0
45003	Aiken County	3.9	4.7	3.7	3.7	1.8	1.7	2.3	2.3
45005	Allendale County	0.0	0.0	0.0	4.6	0.0	0.0	0.0	0.0
45007	Anderson County	5.3	6.4	5.8	6.5	5.6	5.2	7.0	3.3
45009	Bamberg County	0.0	8.2	0.0	5.2	5.3	0.0	0.0	0.0
45011	Barnwell County	0.0	0.0	0.0	1.7	0.0	0.0	0.0	0.0
45013	Beaufort County	4.4	2.6	3.2	2.1	3.0	3.1	3.4	3.0
45015	Berkeley County	2.4	2.3	3.0	0.8	4.0	0.7	1.0	0.3
45017	Calhoun County	0.0	0.0	0.0	0.0	0.0	0.0	3.0	0.0
45019	Charleston County	4.7	3.6	5.0	3.6	3.1	3.1	2.3	1.5
45021	Cherokee County	1.1	0.0	0.6	1.8	0.6	0.0	1.8	0.0
45023	Chester County	2.0	2.1	0.0	0.0	1.2	0.0	1.1	0.0
45025	Chesterfield County	2.9	1.5	0.0	0.0	2.5	0.0	1.7	0.8
45027	Clarendon County	0.0	1.8	1.8	0.0	1.8	0.0	1.8	0.0
45029	Colleton County	2.4	1.2	1.2	3.7	1.2	1.2	0.0	1.2
45031	Darlington County	4.2	4.3	6.5	6.1	8.4	1.7	8.4	4.6
45033	Dillon County	0.0	0.0	0.0	0.0	1.3	2.5	0.0	0.0
45035	Dorchester County	4.3	3.6	5.6	3.4	5.0	2.8	4.8	5.5
45037	Edgefield County	2.1	2.1	4.1	0.0	2.0	2.1	2.3	4.5
45039	Fairfield County	1.7	0.0	0.0	0.0	0.0	0.0	4.5	0.0
45041	Florence County	6.7	4.4	4.3	3.2	4.4	4.6	6.6	4.4
45043	Georgetown County	2.3	2.3	2.3	2.4	0.0	2.7	1.6	0.5
45045	Greenville County	5.0	6.9	7.1	6.3	5.9	5.9	7.7	5.7
45047	Greenwood County	2.3	0.4	1.3	2.1	1.7	1.3	2.2	2.6
45049	Hampton County	2.1	4.6	0.0	2.6	5.3	2.7	2.7	0.0
45051	Horry County	0.2	0.9	1.5	1.2	1.2	1.1	1.2	1.2
45053	Jasper County	0.0	0.0	0.0	2.5	0.0	0.0	0.0	0.0
45055	Kershaw County	3.4	2.1	3.5	0.7	2.0	2.8	0.7	1.4
45057	Lancaster County	0.6	1.3	1.3	2.8	2.8	0.0	0.0	0.8
45059	Laurens County	0.6	1.3	1.4	0.0	1.5	0.0	2.8	0.7
45061	Lee County	3.9	0.0	0.0	0.0	0.0	0.0	0.0	0.0
45063	Lexington County	4.5	4.6	2.5	3.0	3.9	1.6	2.2	1.5
45065	McCormick County	0.0	8.9	0.0	0.0	0.0	0.0	9.2	0.0
45067	Marion County	0.0	0.0	0.0	0.0	0.0	0.0	0.0	0.0
45069	Marlboro County	1.6	0.0	0.0	1.6	0.0	0.0	0.0	0.0
45071	Newberry County	1.8	1.9	4.8	0.9	0.0	0.0	0.9	0.0
45073	Oconee County	6.4	7.9	7.2	7.4	7.1	4.8	5.6	7.3
45075	Orangeburg County	2.9	0.0	1.1	3.6	1.2	2.0	0.8	1.1
45077	Pickens County	8.9	12.2	13.8	14.9	10.6	8.2	10.4	7.7
45079	Richland County	2.2	2.8	2.2	2.6	2.2	2.0	2.7	1.6
45081	Saluda County	0.0	0.0	7.9	8.1	2.9	0.0	0.0	0.0
45083	Spartanburg County	5.7	7.2	8.7	10.0	7.8	7.9	8.4	4.9
45085	Sumter County	0.3	0.9	0.3	1.6	0.3	1.9	0.6	1.3
45087	Union County	1.3	1.3	1.4	1.5	0.0	0.0	1.8	1.9
45089	Williamsburg County	0.0	0.0	1.4	0.0	1.4	0.0	2.8	0.0
45091	York County	5.1	5.0	6.9	4.9	4.3	3.7	4.7	2.7
	South Carolina	3.5	3.8	4.1	3.9	3.5	3.1	3.8	2.6
	United States	7.7	8.0	8.1	8.2	7.8	6.7	8.0	7.0

\*Number of U.S. utility patents issued to South Carolina inventors / Private Employment. Origin of the patent is determined by county of residence of the first-named inventor.

Source: United States Patent and Trademark Office, Patent Electronic Business Center  
Available at: <http://www.uspto.gov/patft/index.html>

## SBIR / STTR Phase I and II Awards

FIPS	County	Year						
		2000	2001	2002	2003	2004	2005	2006
45001	Abbeville County	\$0	\$0	\$0	\$0	\$0	\$0	\$0
45003	Aiken County	\$84,182	\$0	\$0	\$112,519	\$0	\$0	\$0
45005	Allendale County	\$0	\$0	\$0	\$0	\$0	\$0	\$0
45007	Anderson County	\$120,396	\$234,152	\$1,514,905	\$0	\$906,688	\$605,138	\$205,688
45009	Bamberg County	\$0	\$0	\$0	\$0	\$0	\$0	\$0
45011	Barnwell County	\$0	\$0	\$0	\$0	\$0	\$0	\$0
45013	Beaufort County	\$857,092	\$3,672,123	\$160,945	\$1,014,035	\$1,363,928	\$621,069	\$102,564
45015	Berkeley County	\$0	\$0	\$0	\$0	\$0	\$0	\$0
45017	Calhoun County	\$0	\$0	\$0	\$0	\$0	\$0	\$0
45019	Charleston County	\$2,233,230	\$877,596	\$4,722,144	\$1,469,956	\$1,340,315	\$5,293,231	\$993,073
45021	Cherokee County	\$0	\$0	\$0	\$0	\$0	\$0	\$0
45023	Chester County	\$0	\$0	\$0	\$0	\$0	\$0	\$0
45025	Chesterfield County	\$0	\$0	\$0	\$0	\$0	\$0	\$0
45027	Clarendon County	\$0	\$0	\$0	\$0	\$0	\$0	\$0
45029	Colleton County	\$0	\$0	\$0	\$0	\$0	\$0	\$0
45031	Darlington County	\$0	\$0	\$0	\$0	\$0	\$0	\$0
45033	Dillon County	\$0	\$0	\$0	\$0	\$0	\$0	\$0
45035	Dorchester County	\$0	\$0	\$0	\$0	\$0	\$0	\$0
45037	Edgefield County	\$0	\$117,047	\$576,268	\$0	\$0	\$105,765	\$174,667
45039	Fairfield County	\$0	\$0	\$0	\$0	\$0	\$0	\$0
45041	Florence County	\$0	\$109,753	\$0	\$0	\$0	\$0	\$0
45043	Georgetown County	\$0	\$0	\$109,563	\$0	\$0	\$0	\$0
45045	Greenville County	\$0	\$0	\$0	\$0	\$0	\$0	\$174,637
45047	Greenwood County	\$0	\$203,010	\$0	\$1,044,181	\$203,880	\$0	\$669,975
45049	Hampton County	\$0	\$0	\$0	\$0	\$0	\$0	\$0
45051	Horry County	\$0	\$0	\$0	\$0	\$0	\$0	\$82,279
45053	Jasper County	\$72,967	\$0	\$0	\$0	\$0	\$0	\$0
45055	Kershaw County	\$0	\$0	\$0	\$0	\$109,763	\$796,244	\$0
45057	Lancaster County	\$0	\$0	\$0	\$0	\$0	\$0	\$0
45059	Laurens County	\$0	\$0	\$0	\$0	\$0	\$0	\$0
45061	Lee County	\$0	\$0	\$0	\$0	\$0	\$0	\$0
45063	Lexington County	\$276,938	\$1,404,915	\$0	\$0	\$0	\$0	\$102,836
45065	McCormick County	\$0	\$0	\$0	\$0	\$0	\$0	\$0
45067	Marion County	\$0	\$0	\$0	\$0	\$0	\$0	\$0
45069	Marlboro County	\$0	\$0	\$0	\$0	\$0	\$0	\$0
45071	Newberry County	\$0	\$0	\$0	\$0	\$0	\$0	\$0
45073	Oconee County	\$481,501	\$0	\$0	\$0	\$0	\$0	\$0
45075	Orangeburg County	\$0	\$0	\$0	\$0	\$0	\$0	\$0
45077	Pickens County	\$0	\$0	\$0	\$225,214	\$548,796	\$0	\$102,815
45079	Richland County	\$662,242	\$756,029	\$2,260,279	\$5,750,335	\$4,660,011	\$4,472,830	\$2,012,713
45081	Saluda County	\$0	\$0	\$0	\$0	\$0	\$0	\$0
45083	Spartanburg County	\$0	\$0	\$0	\$0	\$0	\$0	\$0
45085	Sumter County	\$0	\$0	\$0	\$0	\$0	\$0	\$0
45087	Union County	\$0	\$0	\$0	\$0	\$0	\$0	\$0
45089	Williamsburg County	\$0	\$0	\$0	\$0	\$0	\$0	\$0
45091	York County	\$0	\$0	\$0	\$112,635	\$76,382	\$541,241	\$842,363
	South Carolina	\$4,788,547	\$7,491,673	\$9,344,104	\$9,728,875	\$9,209,763	\$12,435,519	\$5,463,610
	United States	\$1,335,065,202	\$1,430,785,492	\$1,834,242,568	\$2,097,140,710	\$2,440,358,637	\$2,214,153,594	\$2,205,502,124

Source: U.S. Small Business Administration, Technology Resources Network  
Available at: [http://tech-net.sba.gov/tech-net/public/dsp\\_search.cfm](http://tech-net.sba.gov/tech-net/public/dsp_search.cfm)

## SBIR / STTR Phase I and II Awards per 1,000 Employees

FIPS	County	Year						
		2000	2001	2002	2003	2004	2005	2006
45001	Abbeville County	\$0	\$0	\$0	\$0	\$0	\$0	\$0
45003	Aiken County	\$1,718	\$0	\$0	\$2,294	\$0	\$0	\$0
45005	Allendale County	\$0	\$0	\$0	\$0	\$0	\$0	\$0
45007	Anderson County	\$2,275	\$4,540	\$30,143	\$0	\$18,684	\$12,589	\$4,257
45009	Bamberg County	\$0	\$0	\$0	\$0	\$0	\$0	\$0
45011	Barnwell County	\$0	\$0	\$0	\$0	\$0	\$0	\$0
45013	Beaufort County	\$18,948	\$80,545	\$3,440	\$20,952	\$27,220	\$11,976	\$1,937
45015	Berkeley County	\$0	\$0	\$0	\$0	\$0	\$0	\$0
45017	Calhoun County	\$0	\$0	\$0	\$0	\$0	\$0	\$0
45019	Charleston County	\$15,354	\$6,098	\$32,546	\$9,871	\$8,691	\$33,387	\$6,056
45021	Cherokee County	\$0	\$0	\$0	\$0	\$0	\$0	\$0
45023	Chester County	\$0	\$0	\$0	\$0	\$0	\$0	\$0
45025	Chesterfield County	\$0	\$0	\$0	\$0	\$0	\$0	\$0
45027	Clarendon County	\$0	\$0	\$0	\$0	\$0	\$0	\$0
45029	Colleton County	\$0	\$0	\$0	\$0	\$0	\$0	\$0
45031	Darlington County	\$0	\$0	\$0	\$0	\$0	\$0	\$0
45033	Dillon County	\$0	\$0	\$0	\$0	\$0	\$0	\$0
45035	Dorchester County	\$0	\$0	\$0	\$0	\$0	\$0	\$0
45037	Edgefield County	\$0	\$24,856	\$117,223	\$0	\$0	\$22,508	\$39,357
45039	Fairfield County	\$0	\$0	\$0	\$0	\$0	\$0	\$0
45041	Florence County	\$0	\$2,171	\$0	\$0	\$0	\$0	\$0
45043	Georgetown County	\$0	\$0	\$6,395	\$0	\$0	\$0	\$0
45045	Greenville County	\$0	\$0	\$0	\$0	\$0	\$0	\$851
45047	Greenwood County	\$0	\$8,040	\$0	\$44,692	\$8,696	\$0	\$29,161
45049	Hampton County	\$0	\$0	\$0	\$0	\$0	\$0	\$0
45051	Horry County	\$0	\$0	\$0	\$0	\$0	\$0	\$807
45053	Jasper County	\$21,298	\$0	\$0	\$0	\$0	\$0	\$0
45055	Kershaw County	\$0	\$0	\$0	\$0	\$7,316	\$55,191	\$0
45057	Lancaster County	\$0	\$0	\$0	\$0	\$0	\$0	\$0
45059	Laurens County	\$0	\$0	\$0	\$0	\$0	\$0	\$0
45061	Lee County	\$0	\$0	\$0	\$0	\$0	\$0	\$0
45063	Lexington County	\$4,058	\$20,803	\$0	\$0	\$0	\$0	\$1,350
45065	McCormick County	\$0	\$0	\$0	\$0	\$0	\$0	\$0
45067	Marion County	\$0	\$0	\$0	\$0	\$0	\$0	\$0
45069	Marlboro County	\$0	\$0	\$0	\$0	\$0	\$0	\$0
45071	Newberry County	\$0	\$0	\$0	\$0	\$0	\$0	\$0
45073	Oconee County	\$21,974	\$0	\$0	\$0	\$0	\$0	\$0
45075	Orangeburg County	\$0	\$0	\$0	\$0	\$0	\$0	\$0
45077	Pickens County	\$0	\$0	\$0	\$8,413	\$20,684	\$0	\$3,672
45079	Richland County	\$4,449	\$4,983	\$14,970	\$37,957	\$30,302	\$29,396	\$12,717
45081	Saluda County	\$0	\$0	\$0	\$0	\$0	\$0	\$0
45083	Spartanburg County	\$0	\$0	\$0	\$0	\$0	\$0	\$0
45085	Sumter County	\$0	\$0	\$0	\$0	\$0	\$0	\$0
45087	Union County	\$0	\$0	\$0	\$0	\$0	\$0	\$0
45089	Williamsburg County	\$0	\$0	\$0	\$0	\$0	\$0	\$0
45091	York County	\$0	\$0	\$0	\$2,133	\$1,372	\$9,489	\$14,009
	South Carolina	\$3,176	\$5,072	\$6,424	\$6,690	\$6,237	\$8,287	\$3,560
	United States	\$12,134	\$13,090	\$17,050	\$19,587	\$22,494	\$20,017	\$19,566

Source : U.S. Small Business Administration, Technology Resources Network  
Available at: [http://tech-net.sba.gov/tech-net/public/dsp\\_search.cfm](http://tech-net.sba.gov/tech-net/public/dsp_search.cfm)