



***UCED RESEARCH REPORT
11-2007-01***

***EDA UNIVERSITY CENTER
FOR ECONOMIC DEVELOPMENT***



**Overview of Economic Trends in South Carolina's
Workforce Investment Regions, 2005-2006**

by

Daniel Eades

Research Associate

E.D.A. University Center for Economic Development

Clemson University, Clemson, South Carolina

www.clemson.edu/uced

**UCED is a University Center Program of
The U.S. Department of Commerce
Economic Development Administration (E.D.A.)**



A. Overview of Economic Trends in South Carolina Workforce Investment Areas (WIAs): Establishments and Employment, 2000-2006

From 2000 to 2006 the number of private establishments in South Carolina grew from 110,221 to 125,345, an increase of 13.7% (Table A.1); slightly above the national growth rate of 11.4%. Additionally, the state and all twelve WIAs reported gains in establishments greater than the national rate of 2.7% for the period of 2005-2006 (Table A.1). Growth in this period was led by Waccamaw (10.4%), Trident (10.1%), Catawba (9.1%), and Lowcountry (8.7%) WIA regions.

Despite the overall growth in establishments, employment trends across the state were mixed; only half of the state's WIAs posted gains between 2000 and 2006. However, both the nation and South Carolina experienced overall positive 2000-2006 employment growth of 2.4% and 1.8% respectively (Table A.2). The 2005 and 2006 period was a time of stronger employment growth for the state which increased employment numbers by 2.3%. Additionally, ten of the twelve WIAs had positive growth, and five [Waccamaw (5.1%), Lowcountry (4.3%), Midlands (3.9%), Catawba (3.6%), and Trident (3.2%)] outperformed the U.S. employment growth rate of 1.9%.

While the total number of individuals employed increased, employment in the manufacturing sector fell across all geographic areas. Between 2000 and 2006 the state reported a loss of nearly 81,500 manufacturing jobs, a decrease of 24.3% (Table A.3). National employment in manufacturing fell by 18.5% during the same period. Manufacturing job losses continued in the state between 2005 and 2006. The heaviest loss occurred in the Greenville WIA, which lost 9.8% of its manufacturing employment, nearly 3,400 jobs. Lower Savannah, (-4.6%), Santee-Lynches (-6.4%), and Upstate (-4.9%) WIA regions also experienced losses at a rate greater than the state (-3.4%) for the 2005-2006 period. Despite overall decline in manufacturing employment, three WIAs [Lowcountry (8.0%), Trident (0.8%), and Waccamaw (1.6%)] reported small increases in manufacturing employment during this period.

Heavy losses in manufacturing jobs are a principal cause of the increase in the number of unemployed in South Carolina over the last six years. Between 2000 and 2006 the total number of unemployed persons in the state increased 95% from 70,821 to 138,061 (Table A.4). Recently, however, this trend has begun to reverse. South Carolina experienced an overall decrease in the number of unemployed (-1.2%) between 2005 and 2006, although trends among individual WIA regions were mixed. WIA regions reporting a decline in the number of unemployed between 2005 and 2006 included: Pee Dee (-8.8%), Upstate (-6.2%), Waccamaw (-4.0%), Santee-Lynches (-3.3%), Pendleton (-3.1%), Lowcountry (-1.7%), and Upper Savannah (-0.8%). However, only the Pee Dee WIA (-8.8%) was able to achieve a decline in the number of unemployed greater than the 7.8% decrease observed nationally.

South Carolina's unemployment rate, although lower than the U.S average in 2000, rose from 3.6% to 6.5% over the period 2000-2006 (Table A.5). The state rate declined slightly between 2005 and 2006, from 6.7% to 6.5%, but this rate remained above the national average of 4.6%. In 2006, unemployment rates were above the state average in the Pee Dee (8.6%), Lower Savannah (7.9%), Santee-Lynches (7.8%), Upper Savannah (7.5%), Catawba (7.4%), Upstate (7.1%), and Pendleton (7.0%) WIA regions. WIAs with the lowest 2006 unemployment rates included Trident (5.2%), Midlands (5.4%), Greenville (5.4%), and Lowcountry (5.5%). With the exception of Catawba and Lower Savannah (up 0.1 and 0.5 percentage points respectively) all WIAs experienced decreases in their unemployment rates between 2005 and 2006. No WIA regions reported unemployment rates below the national unemployment rate of 4.6% in 2006.

Figures A.1 through A.8 provide trend lines in establishment numbers, employment, and unemployment rates for the period 2000-2006. The 2000 values for each WIA region are normalized to the same starting value of "100" so that relative changes over time among the WIA regions are easily compared.

Geographic Area	Year							Percent Change	
A.1. Private Establishments									
	2000	2001	2002	2003	2004	2005	2006	2000-2006	2005-2006
Catawba WIA	5,634	5,723	6,067	5,829	5,721	6,008	6,555	16.3%	9.1%
Greenville WIA	11,811	11,950	12,518	12,201	11,821	12,299	13,146	11.3%	6.9%
Lowcountry WIA	6,306	6,519	6,882	6,744	6,651	6,986	7,597	20.5%	8.7%
Lower Savannah WIA	5,891	5,895	6,057	5,830	5,695	5,944	6,358	7.9%	7.0%
Midlands WIA	14,910	15,041	15,795	15,189	14,682	15,364	16,472	10.5%	7.2%
Pee Dee WIA	7,121	7,115	7,289	6,904	6,615	6,728	7,045	-1.1%	4.7%
Pendleton WIA	7,116	7,108	7,356	7,069	6,936	7,232	7,650	7.5%	5.8%
Santee-Lynches WIA	4,051	4,049	4,171	3,967	3,885	4,043	4,339	7.1%	7.3%
Trident WIA	15,043	15,420	16,294	15,744	15,381	16,361	18,019	19.8%	10.1%
Upper Savannah WIA	4,299	4,286	4,410	4,209	4,070	4,188	4,399	2.3%	5.0%
Upstate WIA	7,892	7,866	8,099	7,795	7,465	7,703	8,092	2.5%	5.0%
Waccamaw WIA	10,146	10,221	10,699	10,362	10,209	10,799	11,918	17.5%	10.4%
South Carolina	110,221	111,880	115,559	111,385	108,929	115,194	125,345	13.7%	8.8%
United States	7,646,318	7,724,965	7,839,903	7,963,340	8,093,142	8,294,662	8,517,150	11.4%	2.7%

Source: Quarterly Census of Employment and Wages (2000-2006). U.S. Department of Labor, Bureau of Labor Statistics. Available at: <http://www.bls.gov/cew/>

A. Establishments and Employment

Geographic Area	Year							Percent Change	
A.2. Employment									
	2000	2001	2002	2003	2004	2005	2006	2000-2006	2005-2006
Catawba WIA	77,476	75,178	74,816	75,529	78,511	80,231	83,101	7.3%	3.6%
Greenville WIA	208,351	201,959	195,368	196,613	196,899	200,653	205,127	-1.5%	2.2%
Lowcountry WIA	61,793	61,729	63,248	64,382	66,550	68,617	71,570	15.8%	4.3%
Lower Savannah WIA	92,854	91,213	90,586	89,252	89,509	87,984	88,379	-4.8%	0.4%
Midlands WIA	223,084	224,587	224,332	224,758	229,545	229,882	238,828	7.1%	3.9%
Pee Dee WIA	107,676	104,497	104,014	101,864	100,900	97,392	98,779	-8.3%	1.4%
Pendleton WIA	104,154	100,987	97,813	95,000	94,887	93,826	94,022	-9.7%	0.2%
Santee-Lynches WIA	57,358	54,591	54,086	54,522	54,866	54,082	53,432	-6.8%	-1.2%
Trident WIA	191,824	191,581	194,911	198,940	205,676	211,687	218,382	13.8%	3.2%
Upper Savannah WIA	69,100	66,820	63,968	62,463	62,937	63,358	63,013	-8.8%	-0.5%
Upstate WIA	130,359	126,197	123,075	121,908	120,952	120,696	121,811	-6.6%	0.9%
Waccamaw WIA	112,721	110,229	111,801	113,620	118,190	121,765	128,021	13.6%	5.1%
South Carolina	1,507,621	1,477,097	1,454,665	1,454,329	1,476,668	1,500,676	1,534,579	1.8%	2.3%
United States	110,023,983	109,304,802	107,577,281	107,065,553	108,490,066	110,611,016	112,719,311	2.4%	1.9%

Source: Quarterly Census of Employment and Wages (2000-2006). U.S. Department of Labor, Bureau of Labor Statistics. Available at: <http://www.bls.gov/cew/>

A.3. Manufacturing Employment

	2000	2001	2002	2003	2004	2005	2006	2000-2006	2005-2006
Catawba WIA	23,222	21,425	20,171	18,685	18,115	18,642	18,146	-21.9%	-2.7%
Greenville WIA	44,268	42,908	38,429	37,360	35,286	34,331	30,950	-30.1%	-9.8%
Lowcountry WIA	4,461	4,041	4,014	3,858	3,944	4,005	4,326	-3.0%	8.0%
Lower Savannah WIA	25,630	23,922	22,623	21,917	21,610	21,286	20,311	-20.8%	-4.6%
Midlands WIA	28,610	27,388	26,390	24,828	23,800	24,061	23,833	-16.7%	-0.9%
Pee Dee WIA	35,917	33,622	31,745	29,961	28,819	27,464	26,920	-25.0%	-2.0%
Pendleton WIA	37,879	34,351	31,027	28,296	27,542	27,078	26,201	-30.8%	-3.2%
Santee-Lynches WIA	19,451	17,736	16,547	16,492	15,781	14,771	13,826	-28.9%	-6.4%
Trident WIA	22,212	21,690	20,830	20,501	20,817	21,154	21,212	-4.5%	0.3%
Upper Savannah WIA	29,573	27,685	24,658	22,638	22,637	22,265	22,075	-25.4%	-0.9%
Upstate WIA	49,088	46,172	42,368	41,196	39,361	37,998	36,120	-26.4%	-4.9%
Waccamaw WIA	12,899	11,094	9,802	8,778	8,640	8,498	8,633	-33.1%	1.6%
South Carolina	335,118	313,735	290,107	276,080	267,426	262,714	253,837	-24.3%	-3.4%
United States	17,314,423	16,386,001	15,209,192	14,459,712	14,257,380	14,190,394	14,113,387	-18.5%	-0.5%

Source: Quarterly Census of Employment and Wages (2000-2006). U.S. Department of Labor, Bureau of Labor Statistics. Available at: <http://www.bls.gov/cew/>

A. Establishments and Employment

Geographic Area	Year							Percent Change	
A.4. Unemployment									
	2000	2001	2002	2003	2004	2005	2006	2000-2006	2005-2006
Catawba WIA	4,705	7,127	9,399	11,166	10,989	10,367	10,944	132.6%	5.6%
Greenville WIA	5,294	7,552	9,693	11,045	12,132	11,568	11,729	121.6%	1.4%
Lowcountry WIA	2,848	3,645	4,288	5,151	5,376	5,348	5,257	84.6%	-1.7%
Lower Savannah WIA	6,192	8,519	8,907	9,843	10,059	10,543	11,259	81.8%	6.8%
Midlands WIA	8,872	11,679	13,187	15,923	17,076	17,327	17,555	97.9%	1.3%
Pee Dee WIA	7,958	10,701	11,310	13,820	14,277	14,473	13,197	65.8%	-8.8%
Pendleton WIA	5,388	8,997	10,634	11,995	12,150	12,691	12,300	128.3%	-3.1%
Santee-Lynches WIA	4,024	5,729	6,330	6,895	7,154	7,877	7,615	89.2%	-3.3%
Trident WIA	8,409	10,910	12,155	14,652	15,475	15,926	15,985	90.1%	0.4%
Upper Savannah WIA	4,578	7,597	9,007	9,346	9,146	9,156	9,081	98.4%	-0.8%
Upstate WIA	6,321	9,876	12,028	12,933	13,737	13,196	12,377	95.8%	-6.2%
Waccamaw WIA	6,232	8,480	9,269	10,996	11,368	11,220	10,766	72.8%	-4.0%
South Carolina	70,821	100,811	116,205	133,767	138,938	139,693	138,061	94.9%	-1.2%
United States	5,692,000	6,801,000	8,378,000	8,774,000	8,149,000	7,591,000	7,001,000	23.0%	-7.8%

Source: Local Area Unemployment Statistics. U.S. Department of Labor, Bureau of Labor Statistics. Available at: <http://www.bls.gov/lau/home.htm>

A.5. Unemployment Rate

Geographic Area	2000	2001	2002	2003	2004	2005	2006	Rate Change	
								2000-2006	2005-2006
Catawba WIA	3.5%	5.3%	6.9%	8.1%	7.9%	7.3%	7.4%	3.9	0.1
Greenville WIA	2.6%	3.7%	4.8%	5.5%	5.9%	5.5%	5.4%	2.8	-0.1
Lowcountry WIA	3.4%	4.3%	4.9%	5.7%	5.8%	5.6%	5.5%	2.2	0.0
Lower Savannah WIA	4.5%	6.3%	6.6%	7.1%	7.2%	7.4%	7.9%	3.4	0.4
Midlands WIA	3.0%	4.1%	4.6%	5.4%	5.6%	5.6%	5.4%	2.4	-0.1
Pee Dee WIA	5.2%	7.2%	7.6%	9.1%	9.5%	9.6%	8.6%	3.4	-1.0
Pendleton WIA	3.1%	5.2%	6.3%	7.0%	7.1%	7.3%	7.0%	3.9	-0.3
Santee-Lynches WIA	4.3%	6.3%	7.0%	7.4%	7.5%	8.1%	7.8%	3.5	-0.3
Trident WIA	3.2%	4.2%	4.5%	5.3%	5.4%	5.4%	5.2%	2.1	-0.1
Upper Savannah WIA	3.8%	6.4%	7.7%	7.9%	7.7%	7.6%	7.5%	3.7	-0.1
Upstate WIA	3.7%	5.9%	7.2%	7.7%	8.1%	7.8%	7.1%	3.4	-0.6
Waccamaw WIA	4.3%	5.9%	6.3%	7.1%	7.1%	6.7%	6.2%	1.9	-0.6
South Carolina	3.6%	5.2%	5.9%	6.7%	6.8%	6.7%	6.5%	2.9	-0.2
United States	4.0%	4.7%	5.8%	6.0%	5.5%	5.1%	4.6%	0.6	-0.5

Source: Local Area Unemployment Statistics. U.S. Department of Labor, Bureau of Labor Statistics. Available at: <http://www.bls.gov/lau/home.htm>

Figure A.1. Private Establishment Trends in SC Workforce Investment Areas, South Carolina, and United States, 2000-2006

Source: Quarterly Census of Employment and Wages (2000-2006). U.S. Department of Labor, Bureau of Labor Statistics.

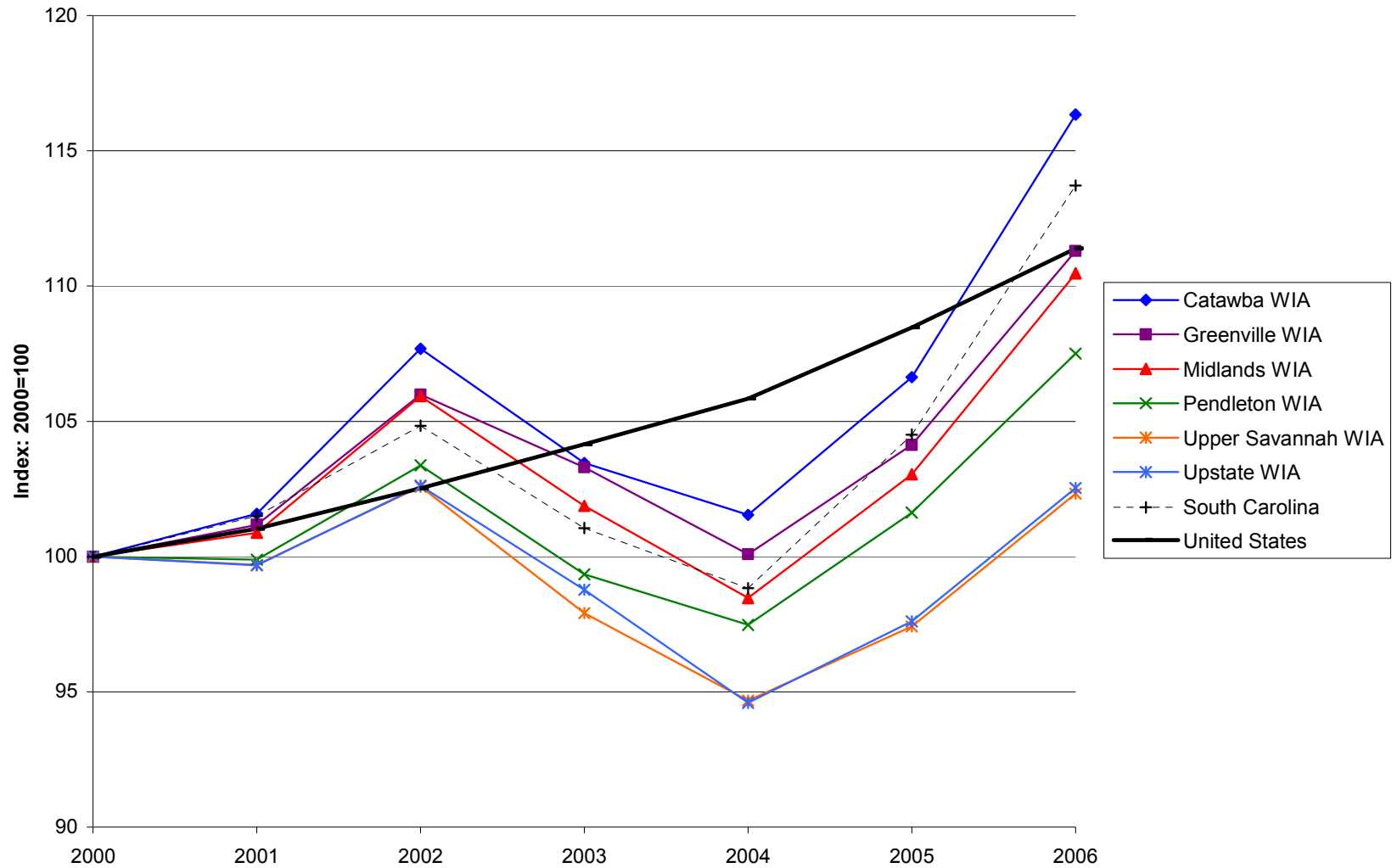


Figure A.2. Private Establishment Trends in SC Workforce Investment Areas, South Carolina, and United States, 2000-2006

Source: Quarterly Census of Employment and Wages (2000-2006). U.S. Department of Labor, Bureau of Labor Statistics.

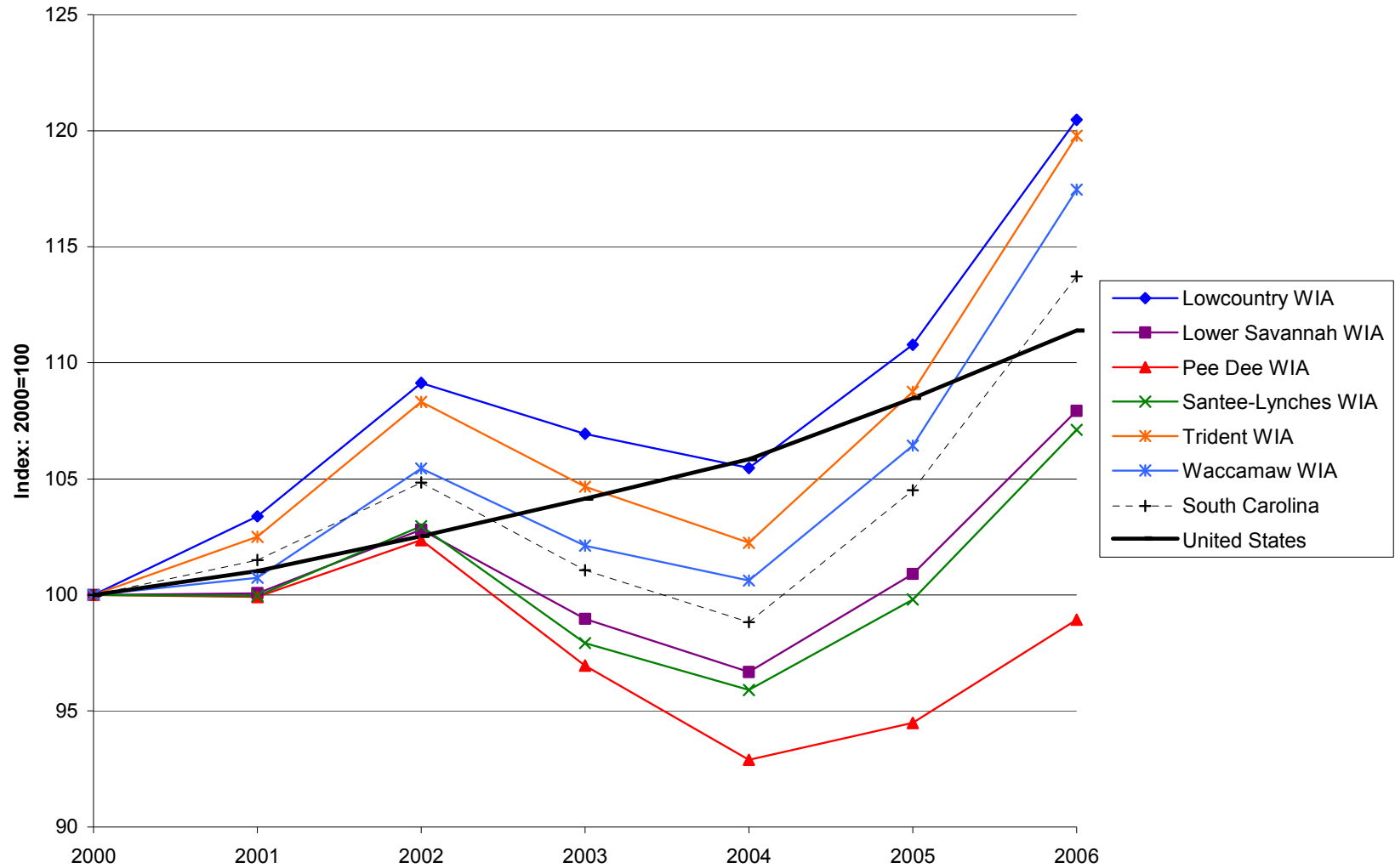


Figure A.3. Employment Trends in SC Workforce Investment Areas, South Carolina, and United States, 2000-2006

Source: Quarterly Census of Employment and Wages (2000-2006). U.S. Department of Labor, Bureau of Labor Statistics.

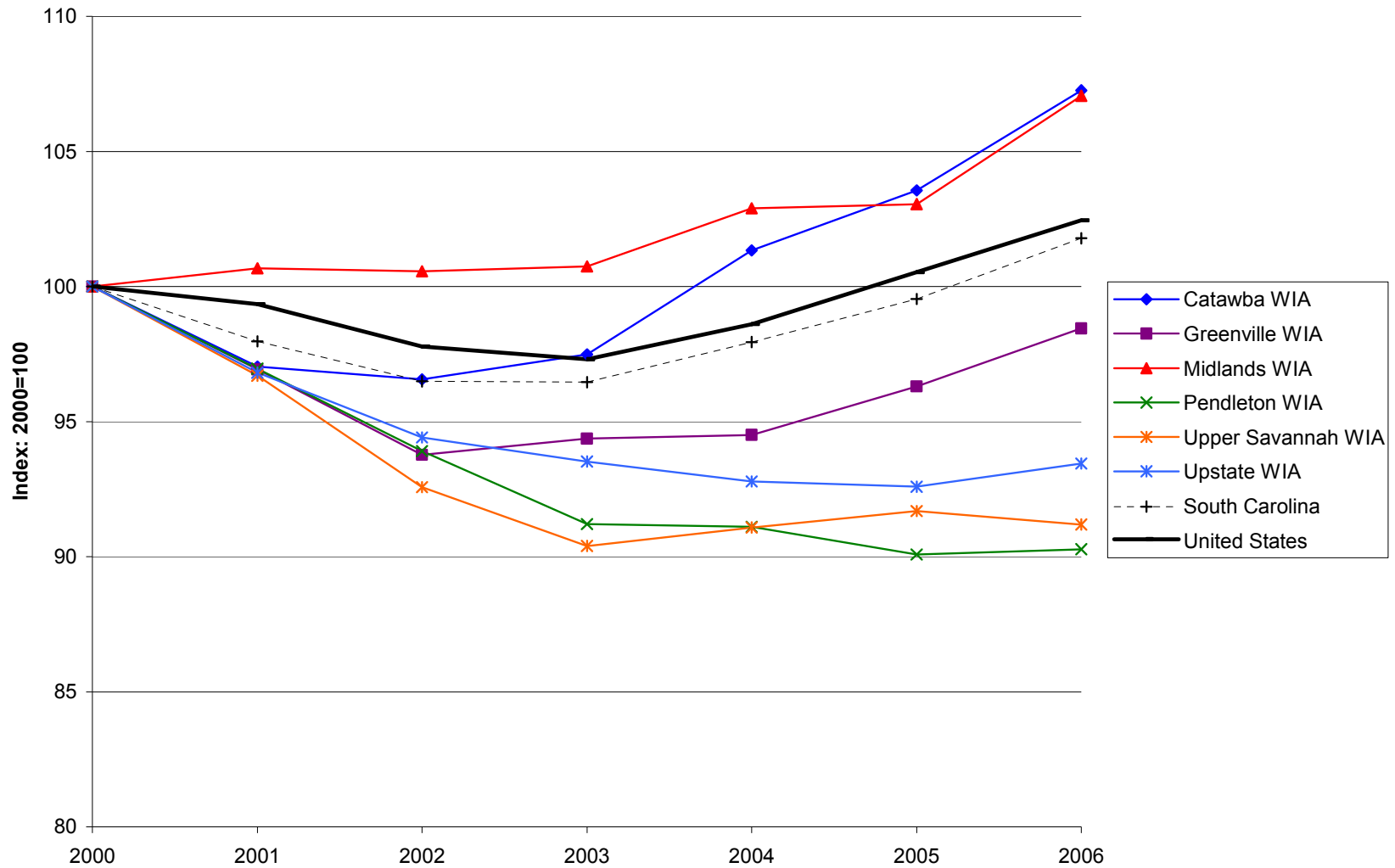


Figure A.4. Employment Trends in SC Workforce Investment Areas, South Carolina, and United States, 2000-2006

Source: Quarterly Census of Employment and Wages (2000-2006). U.S. Department of Labor, Bureau of Labor Statistics.

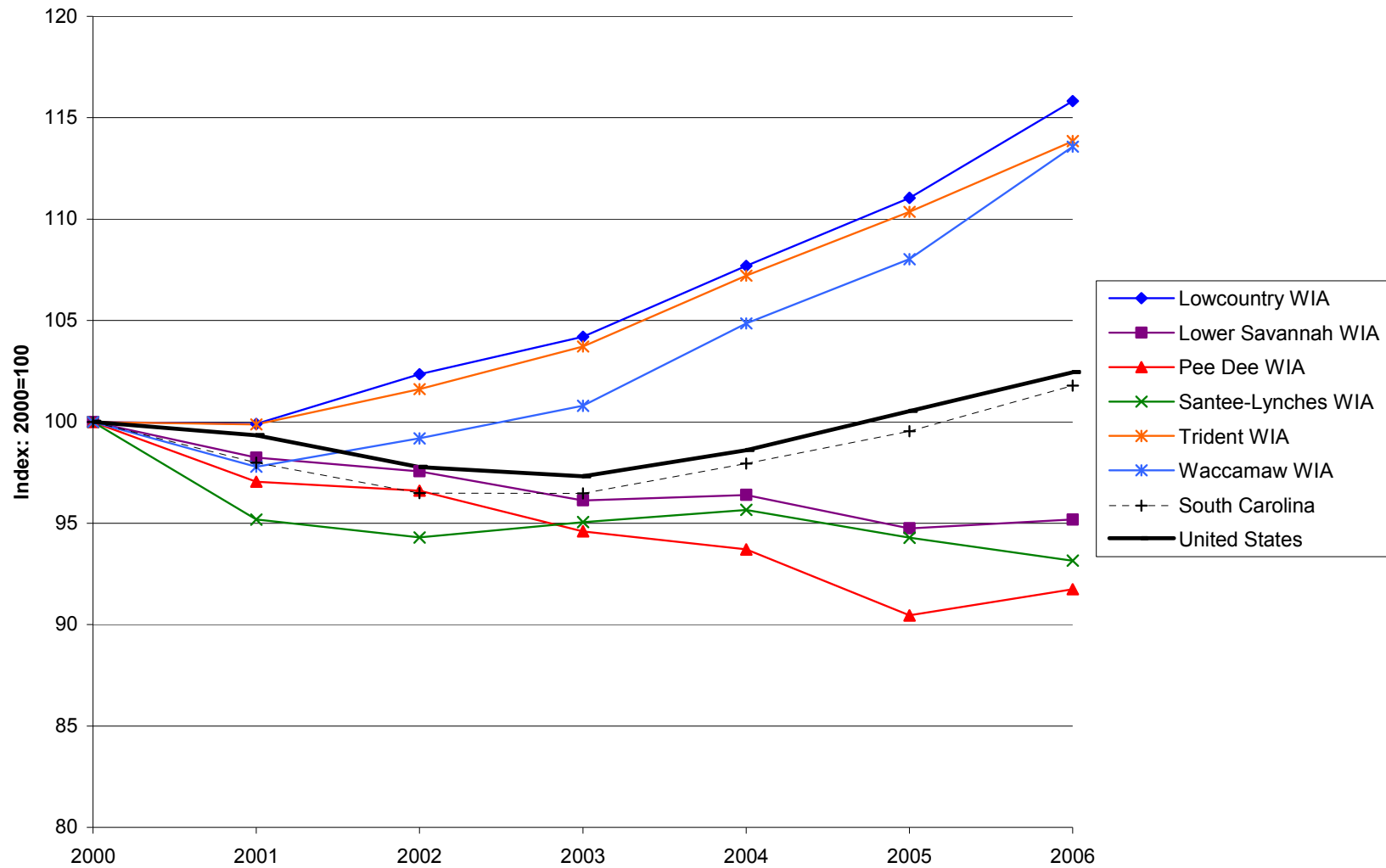


Figure A.5. Manufacturing Employment Trends in SC Workforce Investment Areas, South Carolina, and United States, 2000-2006

Source: Quarterly Census of Employment and Wages (2000-2006). U.S. Department of Labor, Bureau of Labor Statistics.

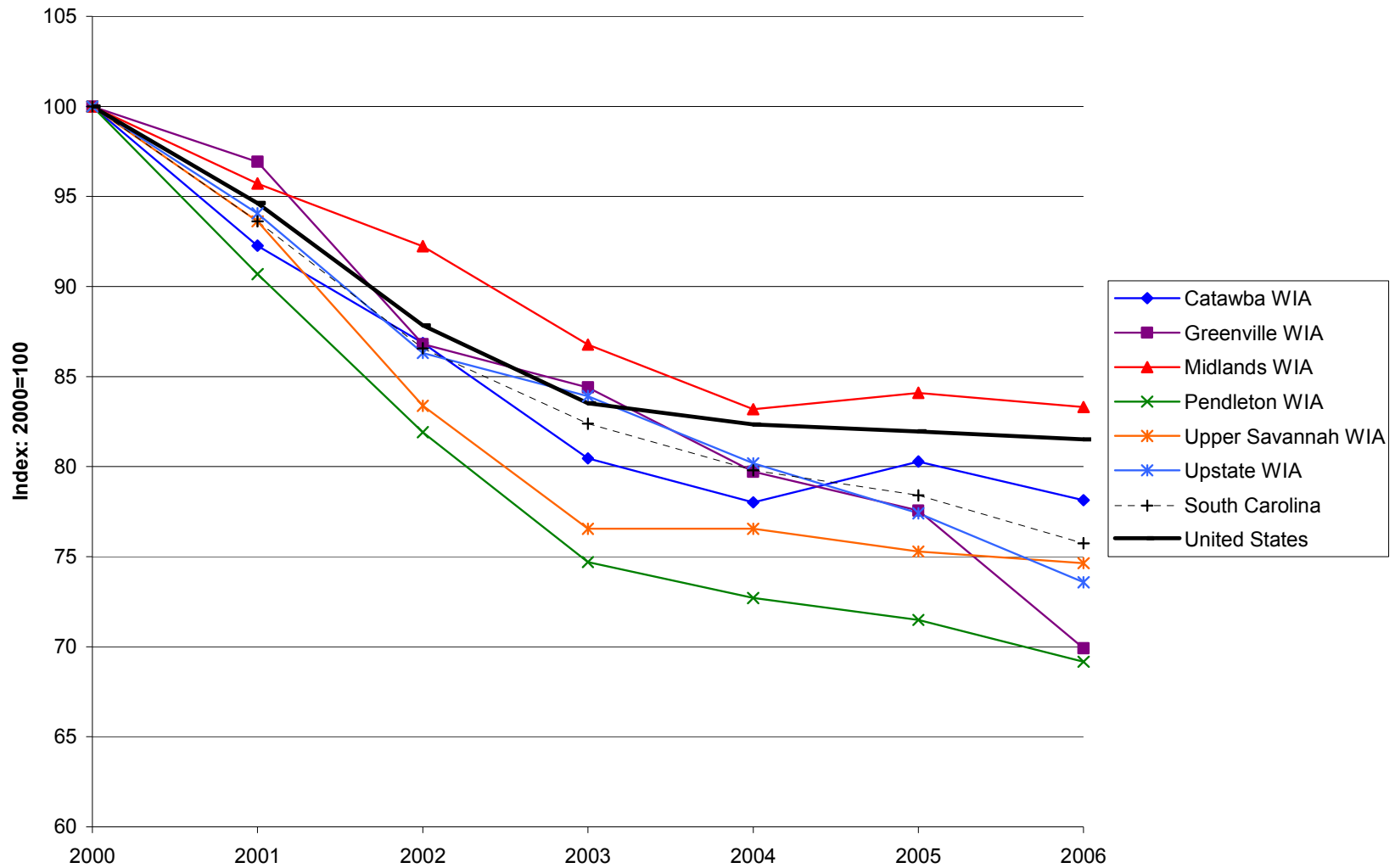


Figure A.6. Manufacturing Employment Trends in SC Workforce Investment Areas, South Carolina, and United States, 2000-2006

Source: Quarterly Census of Employment and Wages (2000-2006). U.S. Department of Labor, Bureau of Labor Statistics.

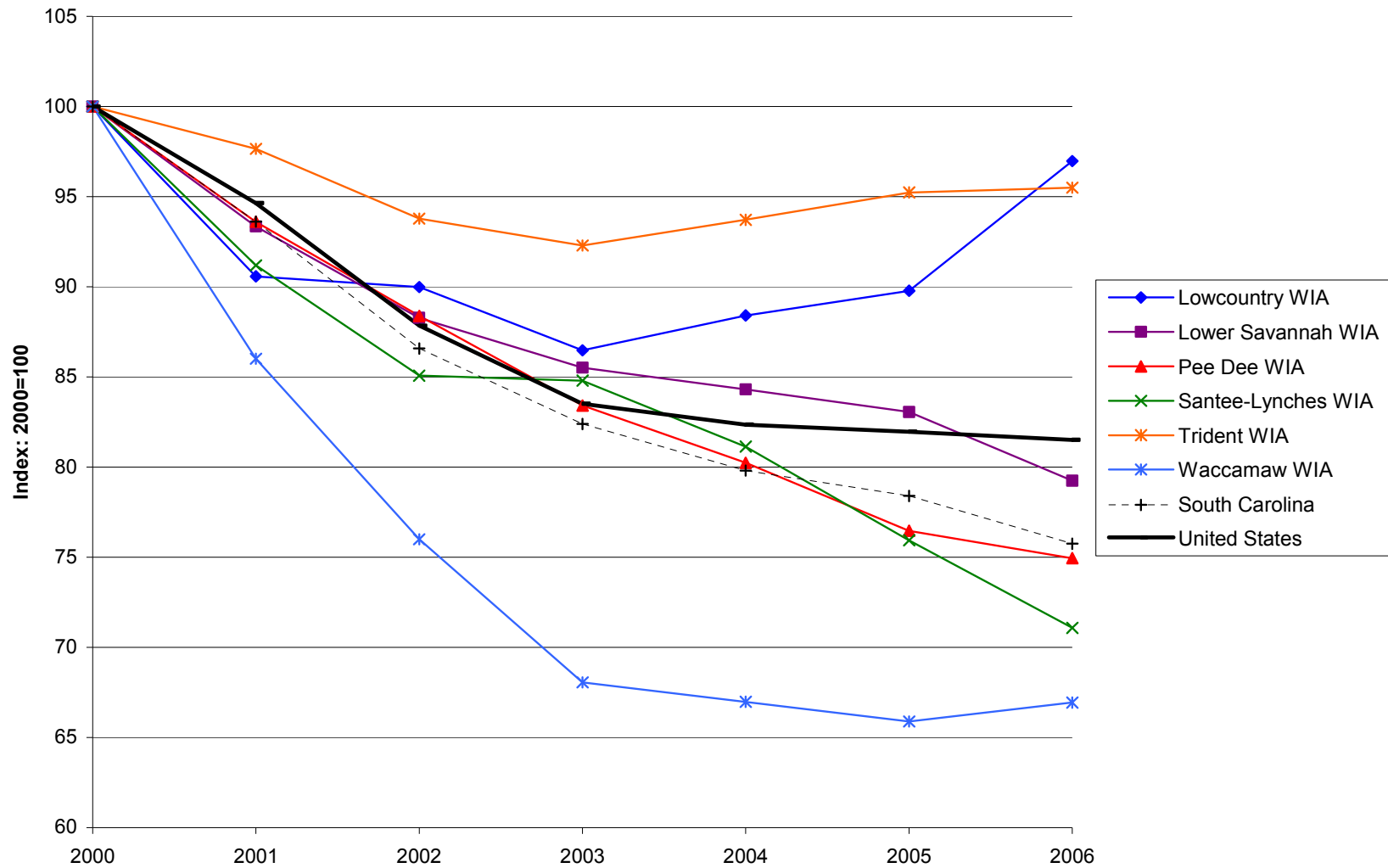


Figure A.7. Unemployment Rates in SC Workforce Investment Areas, South Carolina, and United States, 2000-2006

Source: Local Area Unemployment Statistics. U.S. Department of Labor, Bureau of Labor Statistics.

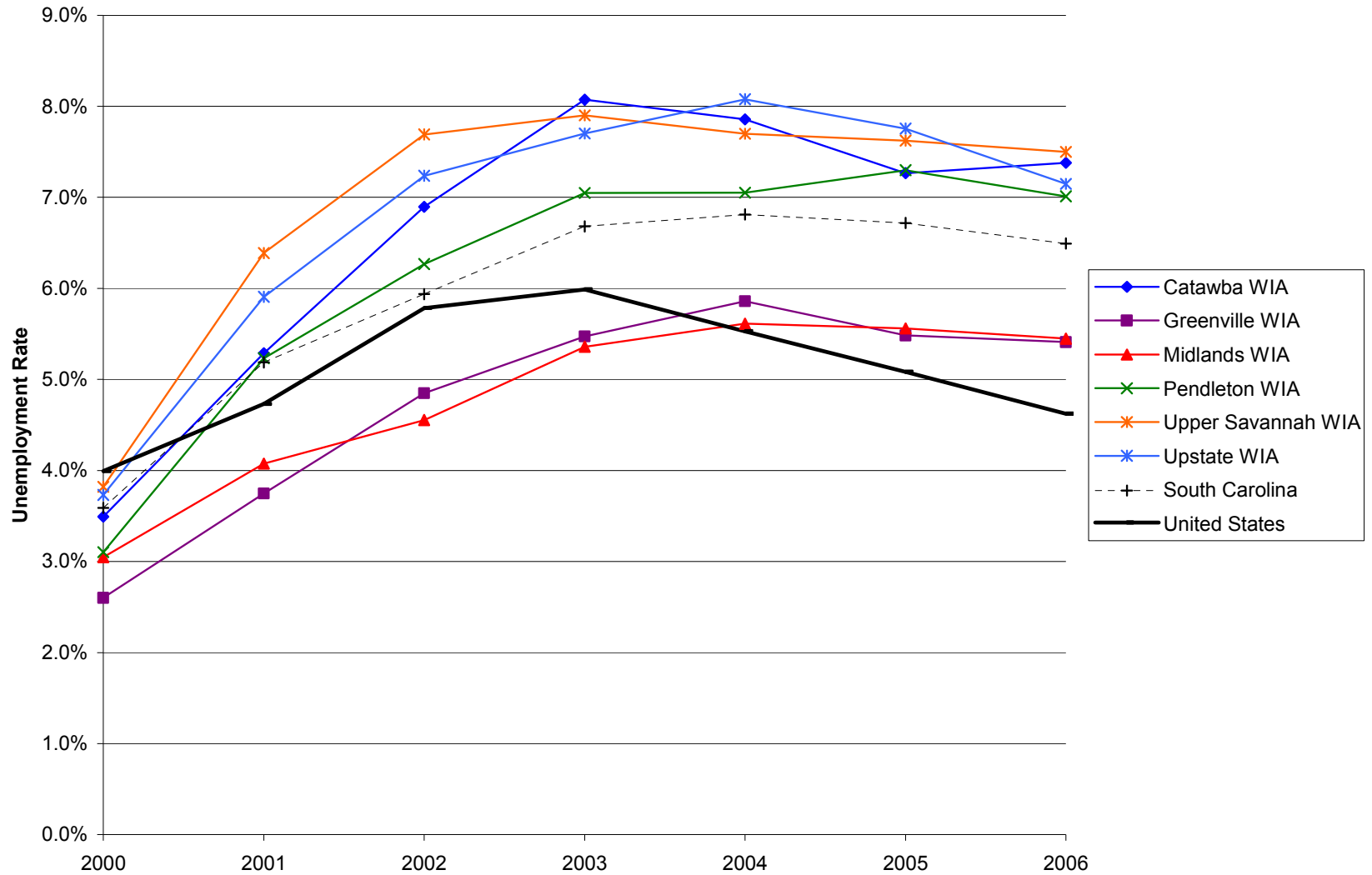
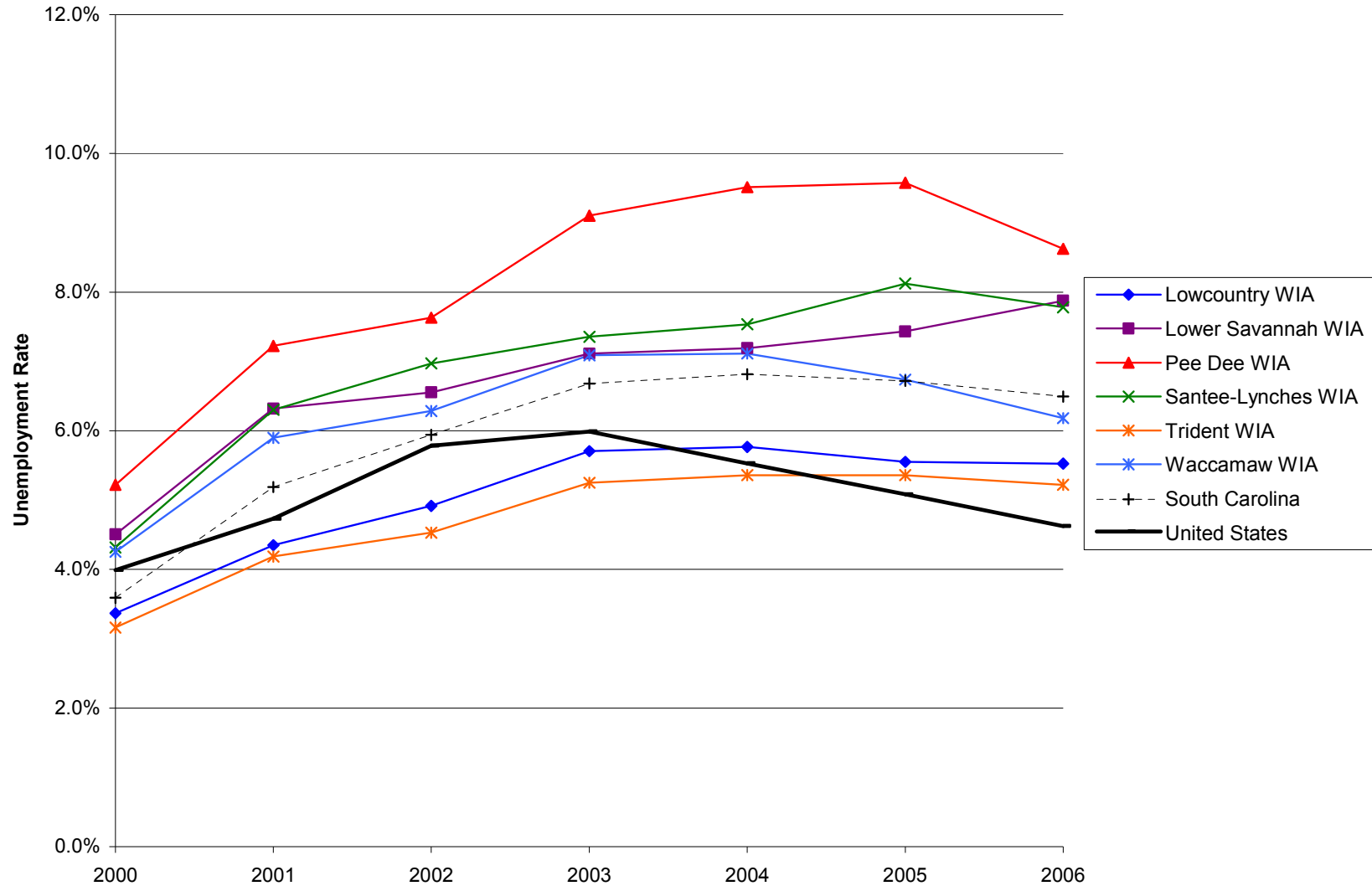


Figure A.8. Unemployment Rates in SC Workforce Investment Areas, South Carolina, and United States, 2000-2006

Source: Local Area Unemployment Statistics. U.S. Department of Labor, Bureau of Labor Statistics.



B. Overview of Economic Trends in South Carolina's Workforce Investment Areas (WIAs): Earnings and Income, 2000-2005

South Carolina's workforce experienced a 3.8% growth in real earnings per worker between 2000 and 2005 (\$31,429 to \$32,609). The growth rate at the state level was greater than the national growth rate of 2.0%; however, 2005 state earnings per worker remained below the national average of \$40,146 (Table B.1). WIAs with the highest earnings per worker in 2005 included Greenville (\$35,700), Lower Savannah (\$34,288), Midlands (\$34,168), Trident (\$34,133), and Upstate (\$34,102). Seven of the WIA regions experienced declines in the real earnings per worker from 2004-2005 (Greenville, Lower Savannah, Pee Dee, Pendleton, Santee-Lynches, Upper Savannah, and Upstate). The largest increases were reported for the Catawba (1.8%), Trident (1.7%), and Lowcountry (1.7%) regions.

Increases in real earnings per worker translated into increased per capita incomes. The state real per capita income grew 2.1%, from \$27,700 in 2000 to \$28,285 in 2005 (Table B.2). Per capita income for the nation grew at 1.8% during the same period. This trend continued between 2004 and 2005. Real per capita income in the state increased 1.0% to \$28,285, and seven of the twelve WIA regions (Catawba, Lowcountry, Midlands, Santee-Lynches, Trident, Upper Savannah, and Waccamaw) increased per capita incomes at a rate equal to or greater than the national increase of 0.8%. The highest per capita incomes for 2005 were reported in the Lowcountry (\$33,119), Greenville (\$31,759), Midlands (\$31,239), and Trident (\$30,844) WIAs. Per capita incomes for the state and all WIA regions remained below the national average of \$34,471 in 2005.

Real median household incomes fell across all geographic areas between 2000 and 2004. However, the state (1.1%) and the Catawba (1.1%), Lowcountry (1.2%), Upper Savannah (0.6%), Upstate (0.6%), Waccamaw (0.6%) and Trident (0.2%) WIAs experienced gains in median household income from 2003 to 2004 (Table B.3). The highest median incomes in 2004 were reported in the Catawba (\$44,078), Greenville (\$43,877), Lowcountry (\$42,785), Midlands (\$43,647), and Trident (\$43,441) regions, but none of the WIAs had median household incomes above the national average of \$45,836. Growth in median household incomes over the last single year period (2003-2004) is encouraging. Over 50 percent of the WIA regions increased or maintained real median incomes for this period despite a 0.3% decrease on the national level.

Transfer payments in South Carolina and most of the WIA regions grew at a higher rate between 2004 and 2005 than the national average of 2.4%; continuing the trend observed between 2000 and 2005 (Table B.4). The state's growth rate during the 2004 to 2005 period was 3.2% and four WIA regions experienced increases greater than the state average: Waccamaw (5.2%), Lowcountry (4.2%), Pendleton (3.7%), and Trident (3.3%). Only the Pee Dee (2.3%) and Upper Savannah (2.1%) WIA regions reported an increase in transfer payments at a rate lower than the national and state rates.

South Carolina's poverty rate (15%) in 2004 was higher than the national rate of 12.7%, and all WIA regions reported poverty rates greater than the national average (Table B.5). The highest poverty rates were observed in the Pee Dee (19.7%), Lower Savannah (18%), and Santee-Lynches (17.8%) WIA regions. Additionally, all WIA regions reported increases in poverty rates greater than the national average of 0.2 percentage points between 2003 and 2004, and seven of the ten WIA regions experienced rate increases greater than 1.0 percentage points over the same period.

Figures B.1 through B.8 provide trend lines in earnings and incomes, transfer payments, and poverty rates for the period 2000-2004/2005. The 2000 values for each WIA region are normalized to the same starting value of "100" so that relative changes over time among the WIA regions are easily compared.

B. Earnings and Income

Geographic Area	Year						Percent Change	
B.1. Earnings per Worker*								
	2000	2001	2002	2003	2004	2005	2000-2005	2004-2005
Catawba WIA	31,374	31,864	31,921	31,715	32,377	32,965	5.1%	1.8%
Greenville WIA	35,300	35,753	35,976	35,785	35,795	35,700	1.1%	-0.3%
Lowcountry WIA	28,968	29,499	29,178	29,672	30,469	30,985	7.0%	1.7%
Lower Savannah WIA	33,947	33,186	34,005	34,094	34,452	34,288	1.0%	-0.5%
Midlands WIA	32,767	32,714	33,210	33,517	34,089	34,168	4.3%	0.2%
Pee Dee WIA	29,869	30,208	30,537	30,601	30,852	30,759	3.0%	-0.3%
Pendleton WIA	29,438	29,633	29,601	29,777	29,918	29,668	0.8%	-0.8%
Santee-Lynches WIA	27,520	27,535	28,283	28,681	28,986	28,920	5.1%	-0.2%
Trident WIA	31,370	32,183	32,911	33,226	33,561	34,133	8.8%	1.7%
Upper Savannah WIA	29,056	28,642	28,592	28,700	28,904	28,607	-1.5%	-1.0%
Upstate WIA	33,148	33,519	34,156	33,980	34,616	34,102	2.9%	-1.5%
Waccamaw WIA	26,352	26,709	27,151	27,480	27,521	27,648	4.9%	0.5%
South Carolina	31,429	31,673	32,050	32,198	32,543	32,609	3.8%	0.2%
United States	39,376	39,239	39,244	39,452	40,106	40,146	2.0%	0.1%

*Dollar estimates adjusted to 2005 dollars

Source: Bureau of Economic Analysis, Regional Economic Information System (REIS): TableCA30 Available at:<http://www.bea.gov/beat/regional/reis>

B. Earnings and Income

Geographic Area	Year						Percent Change	
B.2. Per Capita Personal Income*								
	2000	2001	2002	2003	2004	2005	2000-2005	2004-2005
Catawba WIA	27,105	26,875	27,285	27,114	27,708	27,918	3.0%	0.8%
Greenville WIA	33,668	32,261	31,731	31,335	31,601	31,759	-5.7%	0.5%
Lowcountry WIA	30,559	31,270	30,774	30,987	32,521	33,119	8.4%	1.8%
Lower Savannah WIA	25,187	25,357	25,529	25,508	25,686	25,774	2.3%	0.3%
Midlands WIA	31,196	30,576	30,579	30,309	30,820	31,239	0.1%	1.4%
Pee Dee WIA	23,968	24,186	24,164	24,428	24,812	24,944	4.1%	0.5%
Pendleton WIA	26,318	26,626	26,549	26,345	26,447	26,520	0.8%	0.3%
Santee-Lynches WIA	23,272	23,314	23,624	23,867	24,678	24,938	7.2%	1.1%
Trident WIA	28,704	28,881	29,217	29,308	30,213	30,844	7.5%	2.1%
Upper Savannah WIA	24,022	23,927	23,268	22,993	23,877	24,089	0.3%	0.9%
Upstate WIA	26,460	26,096	26,268	25,861	25,916	25,856	-2.3%	-0.2%
Waccamaw WIA	26,078	26,048	25,869	26,093	26,499	26,721	2.5%	0.8%
South Carolina	27,700	27,556	27,542	27,469	28,008	28,285	2.1%	1.0%
United States	33,846	33,703	33,431	33,398	34,211	34,471	1.8%	0.8%

*Dollar estimates adjusted to 2005 dollars

Source: Bureau of Economic Analysis, Regional Economic Information System (REIS): TableCA1-3 Available at:<http://www.bea.gov/bea/regional/reis>

B.3. Median Income*

	2000	2001	2002	2003	2004	2005	2000-2005	2004-2005
Catawba WIA	46,062	43,844	43,523	43,611	44,078	--	-4.3%	1.1%
Greenville WIA	48,251	46,312	45,224	44,665	43,877	--	-9.1%	-1.8%
Lowcountry WIA	45,217	42,820	42,289	42,288	42,785	--	-5.4%	1.2%
Lower Savannah WIA	38,422	36,328	35,862	35,786	35,523	--	-7.5%	-0.7%
Midlands WIA	48,149	45,881	44,909	44,362	43,647	--	-9.3%	-1.6%
Pee Dee WIA	35,348	33,497	32,940	33,218	32,987	--	-6.7%	-0.7%
Pendleton WIA	42,888	40,838	40,275	40,533	39,985	--	-6.8%	-1.4%
Santee-Lynches WIA	37,751	35,657	35,035	35,323	35,335	--	-6.4%	0.0%
Trident WIA	45,847	43,446	42,996	43,361	43,441	--	-5.2%	0.2%
Upper Savannah WIA	38,534	36,278	35,477	35,061	35,287	--	-8.4%	0.6%
Upstate WIA	42,365	39,720	38,975	39,226	39,461	--	-6.9%	0.6%
Waccamaw WIA	39,674	37,060	36,306	36,635	36,861	--	-7.1%	0.6%
South Carolina	42,284	40,751	40,647	40,337	40,791	--	-3.5%	1.1%
United States	47,623	46,568	46,039	45,978	45,836	--	-3.8%	-0.3%

*Dollar estimates adjusted to 2005 dollars

Source: U.S. Census Bureau, Small Area Income and Poverty Estimates. Available at:<http://www.census.gov/hhes/www/saipe/tables.html>

B. Earnings and Income

Geographic Area	Year						Percent Change	
B.4. Transfer Payments (x\$1,000)*								
	2000	2001	2002	2003	2004	2005	2000-2005	2004-2005
Catawba WIA	971,948	1,059,974	1,165,139	1,203,887	1,267,622	1,310,209	34.8%	3.4%
Greenville WIA	1,377,470	1,485,264	1,606,676	1,641,696	1,756,054	1,812,523	31.6%	3.2%
Lowcountry WIA	847,394	914,781	990,915	1,035,396	1,100,333	1,146,778	35.3%	4.2%
Lower Savannah WIA	1,359,155	1,458,760	1,559,723	1,590,627	1,672,422	1,713,943	26.1%	2.5%
Midlands WIA	2,008,918	2,159,922	2,336,547	2,389,628	2,548,275	2,624,314	30.6%	3.0%
Pee Dee WIA	1,627,144	1,736,014	1,842,261	1,880,263	1,982,876	2,027,591	24.6%	2.3%
Pendleton WIA	1,345,212	1,467,123	1,593,308	1,627,429	1,727,953	1,792,575	33.3%	3.7%
Santee-Lynches WIA	900,867	972,518	1,047,353	1,069,445	1,140,460	1,174,062	30.3%	2.9%
Trident WIA	1,996,500	2,156,823	2,328,779	2,386,670	2,546,039	2,628,932	31.7%	3.3%
Upper Savannah WIA	1,126,998	1,219,734	1,270,969	1,249,955	1,325,897	1,353,840	20.1%	2.1%
Upstate WIA	1,368,276	1,481,411	1,605,086	1,629,872	1,711,924	1,758,889	28.5%	2.7%
Waccamaw WIA	1,333,900	1,455,176	1,575,348	1,633,329	1,749,206	1,839,618	37.9%	5.2%
South Carolina	16,263,782	17,567,500	18,922,104	19,338,196	20,529,061	21,183,274	30.2%	3.2%
United States	1,154,681,195	1,232,030,917	1,324,385,860	1,364,978,235	1,411,726,412	1,446,244,000	25.3%	2.4%

*Dollar estimates adjusted to 2005 dollars

Source: Bureau of Economic Analysis, Regional Economic Information System (REIS): TableCA35 Available at:<http://www.bea.gov/region/reis>

B.5. Poverty Rate

	2000	2001	2002	2003	2004	2005	Rate Change	
							2000-2004	2004-2005
Catawba WIA	10.6%	11.5%	12.0%	12.4%	13.2%	--	2.5	0.8
Greenville WIA	9.8%	10.7%	11.5%	12.0%	13.0%	--	3.2	1.0
Lowcountry WIA	14.2%	15.9%	15.7%	14.1%	14.9%	--	0.7	0.8
Lower Savannah WIA	15.9%	16.9%	16.9%	16.6%	18.0%	--	2.1	1.4
Midlands WIA	10.9%	11.8%	12.2%	12.6%	13.7%	--	2.8	1.1
Pee Dee WIA	17.9%	18.7%	18.5%	18.0%	19.7%	--	1.8	1.6
Pendleton WIA	10.3%	11.6%	12.0%	11.7%	13.5%	--	3.1	1.7
Santee-Lynches WIA	15.6%	16.7%	16.8%	16.3%	17.8%	--	2.2	1.5
Trident WIA	12.4%	13.2%	13.2%	13.0%	13.8%	--	1.4	0.9
Upper Savannah WIA	13.4%	14.9%	15.2%	14.6%	16.0%	--	2.5	1.3
Upstate WIA	11.5%	12.7%	13.2%	13.3%	14.2%	--	2.7	0.9
Waccamaw WIA	14.4%	15.8%	15.3%	14.6%	15.6%	--	1.2	1.1
South Carolina	12.8%	13.8%	14.0%	13.8%	15.0%	--	2.2	1.2
United States	11.3%	11.7%	12.1%	12.5%	12.7%	--	1.4	0.2

Source: U.S. Census Bureau, Small Area Income and Poverty Estimates. Available at:<http://www.census.gov/hhes/www/saipe/tables.html>

Figure B.1. Earnings per Worker in SC Workforce Investment Areas, South Carolina, and United States 2000-2005

Source: Bureau of Economic Analysis, Regional Economic Information System (REIS): TableCA30

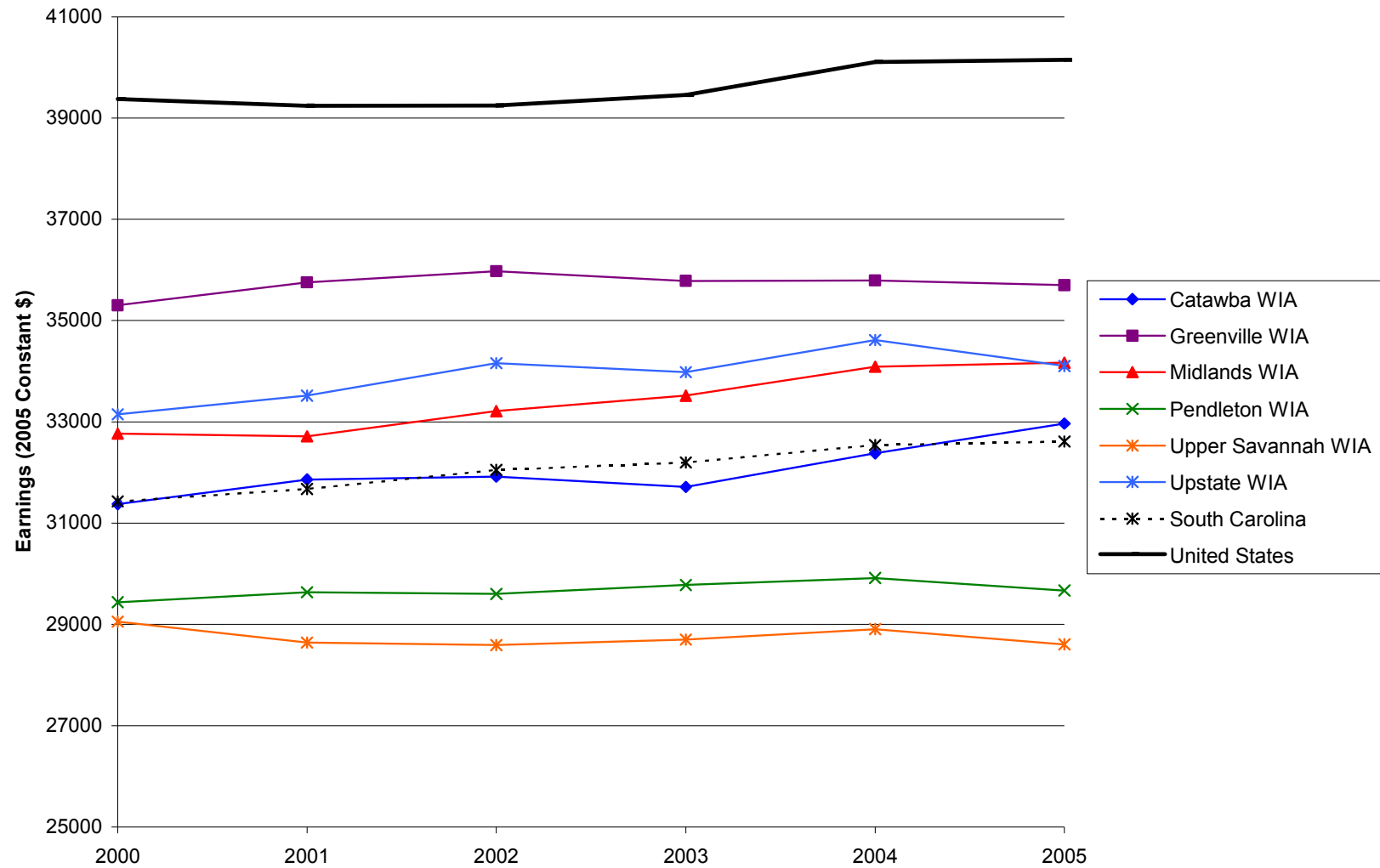


Figure B.2. Earnings per Worker in SC Workforce Investment Areas, South Carolina, and United States 2000-2005

Source: Bureau of Economic Analysis, Regional Economic Information System (REIS): TableCA30

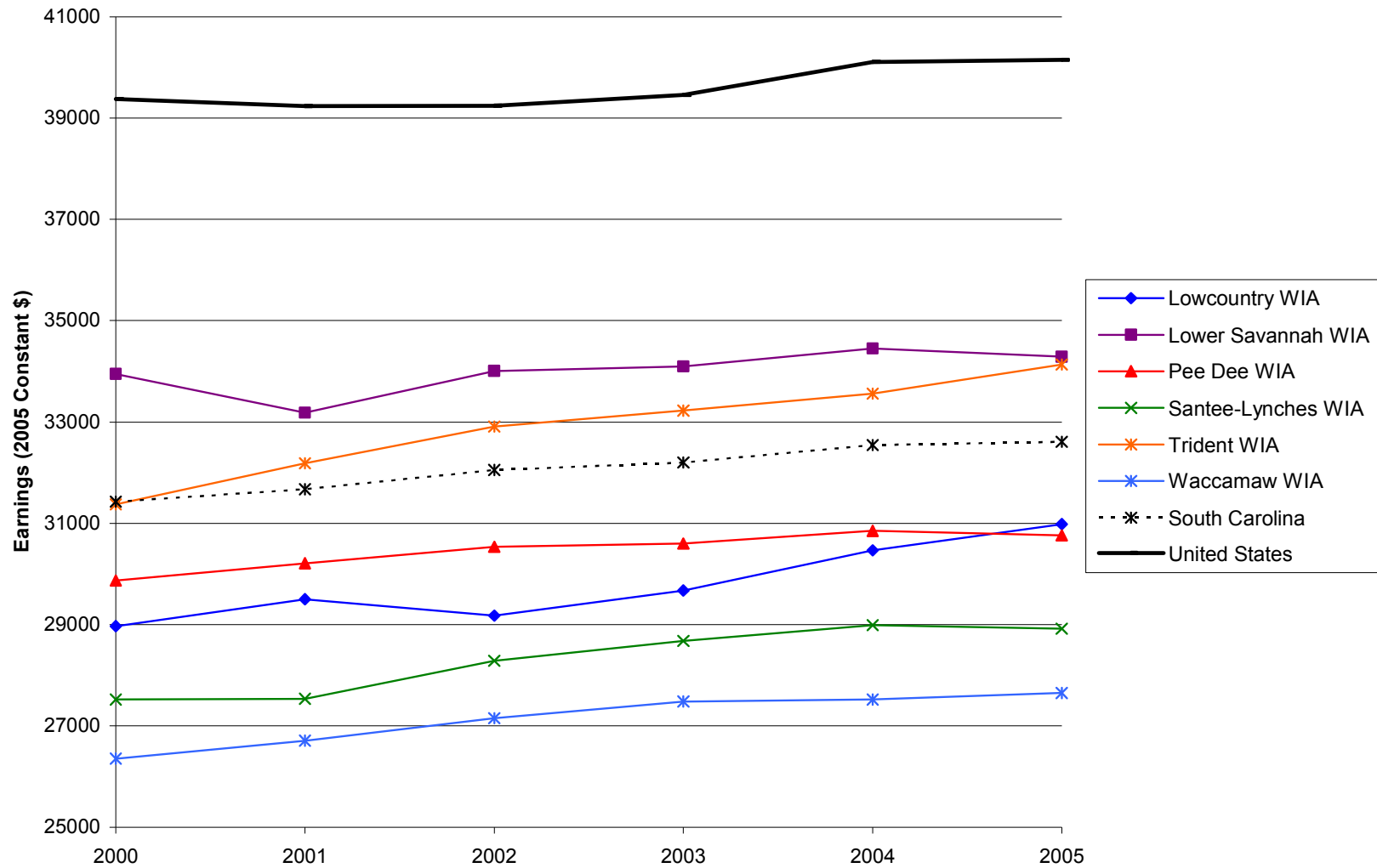


Figure B.3. Per Capita Personal Income in SC Workforce Investment Areas, South Carolina, and United States 2000-2005

Source: Bureau of Economic Analysis, Regional Economic Information System (REIS): TableCA1-3

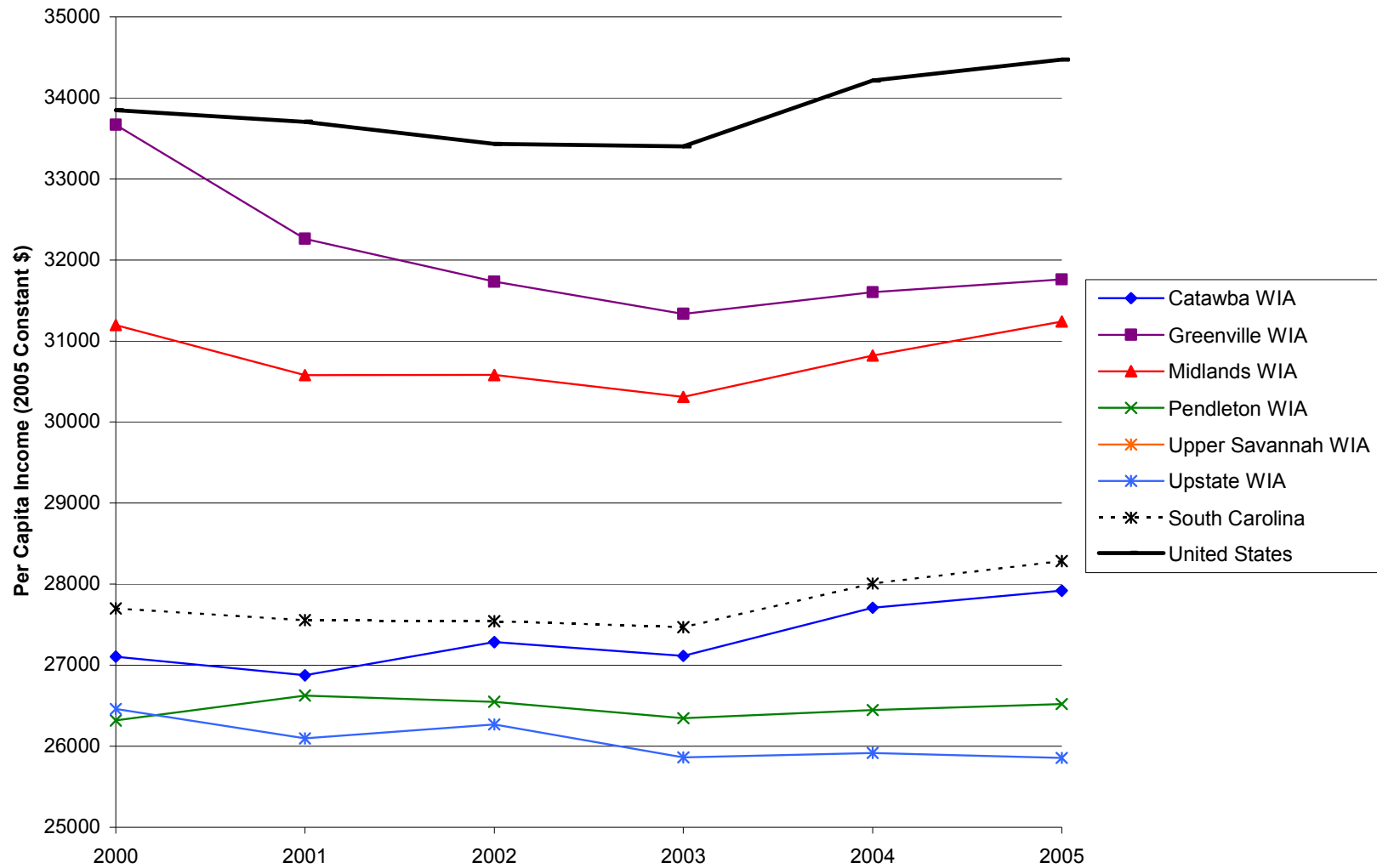


Figure B.4. Per Capita Personal Income in SC Workforce Investment Areas, South Carolina, and United States 2000-2005

Source: Bureau of Economic Analysis, Regional Economic Information System (REIS): TableCA1-3

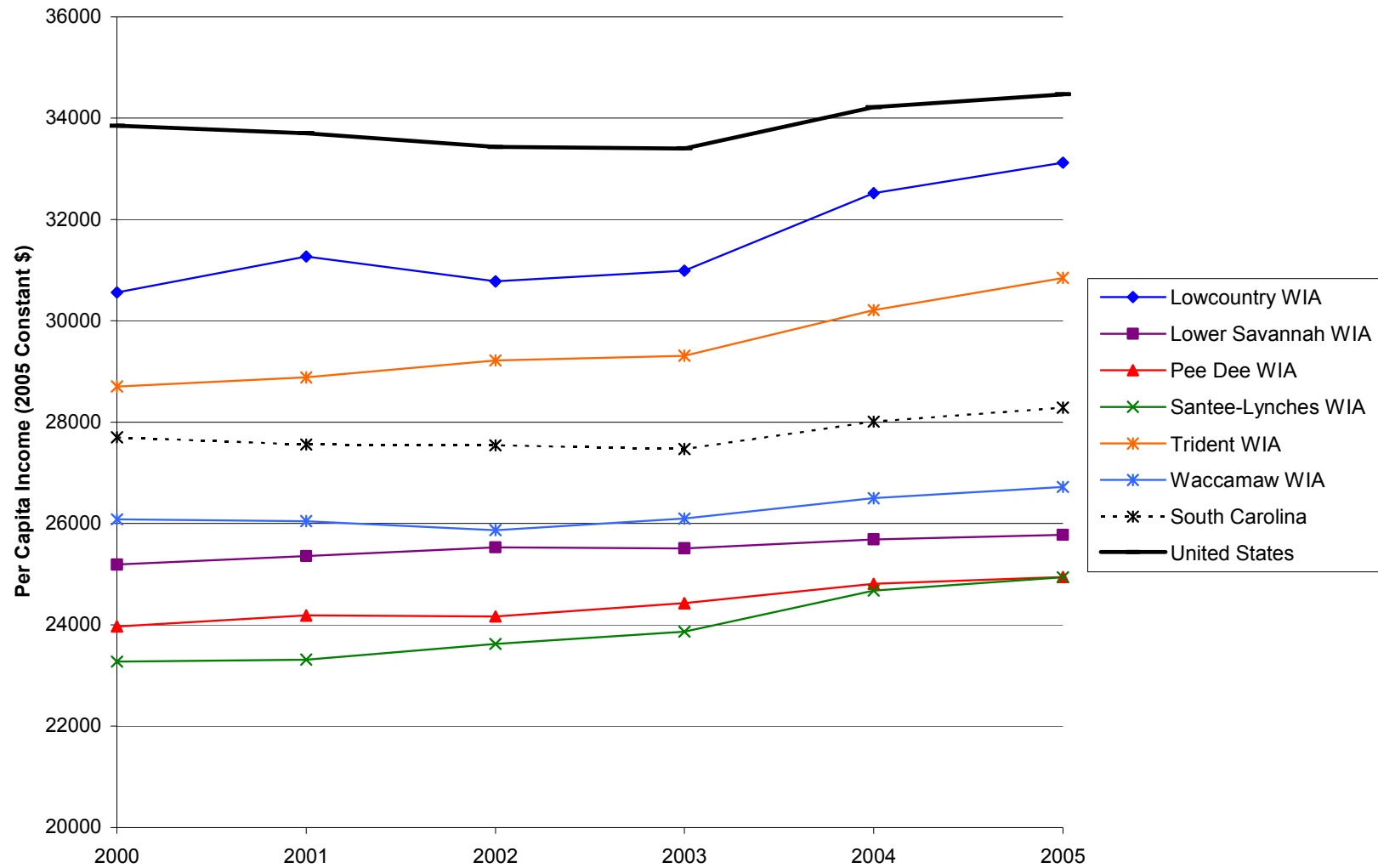


Figure B.5. Median Household Incomes in SC Workforce Investment Areas, South Carolina, and United States, 2000-2004

Source: U.S. Census Bureau, Small Area Income and Poverty Estimates

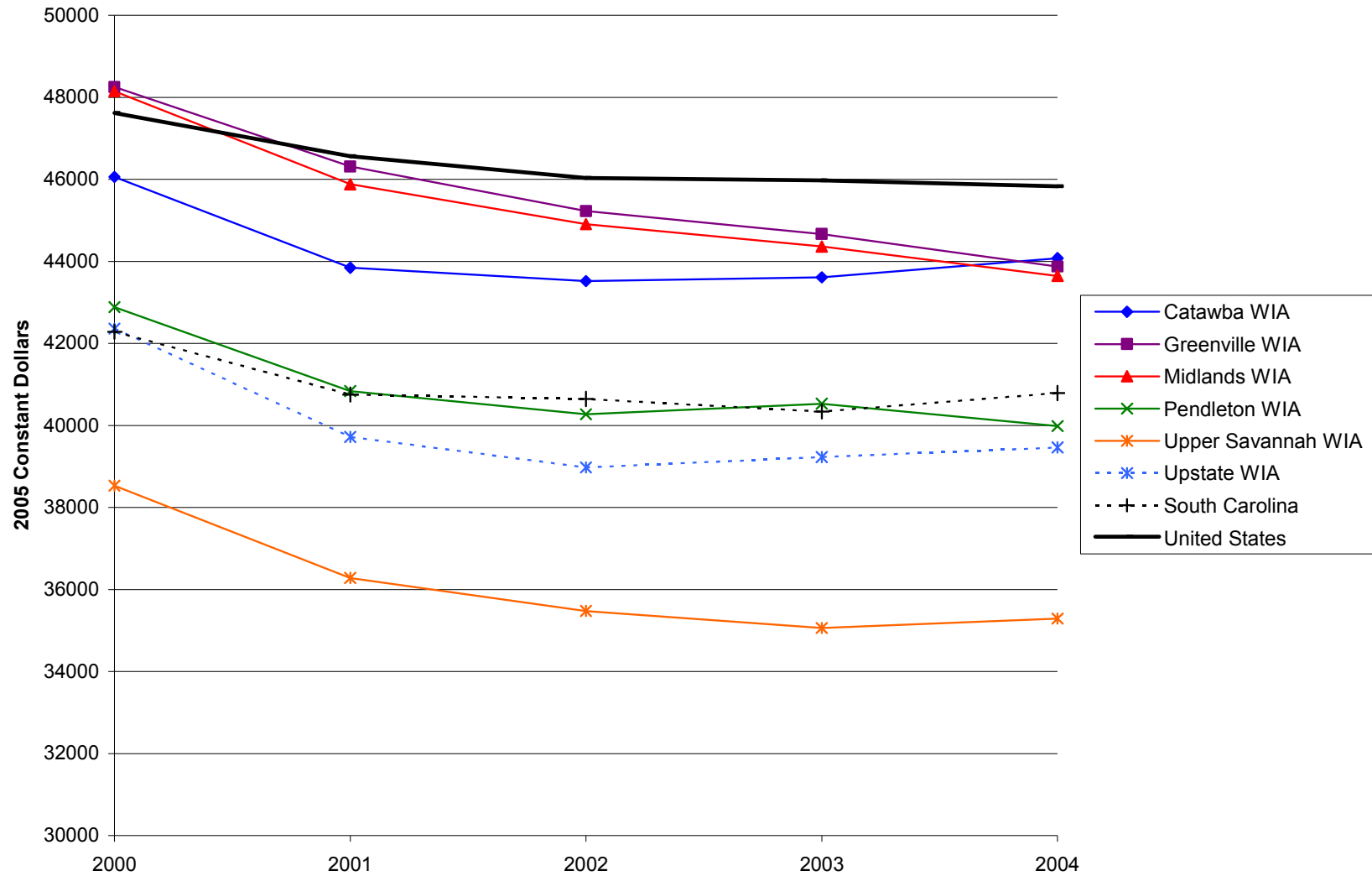


Figure B.6. Median Household Incomes in SC Workforce Investment Areas, South Carolina, and United States, 2000-2004

Source: U.S. Census Bureau, Small Area Income and Poverty Estimates

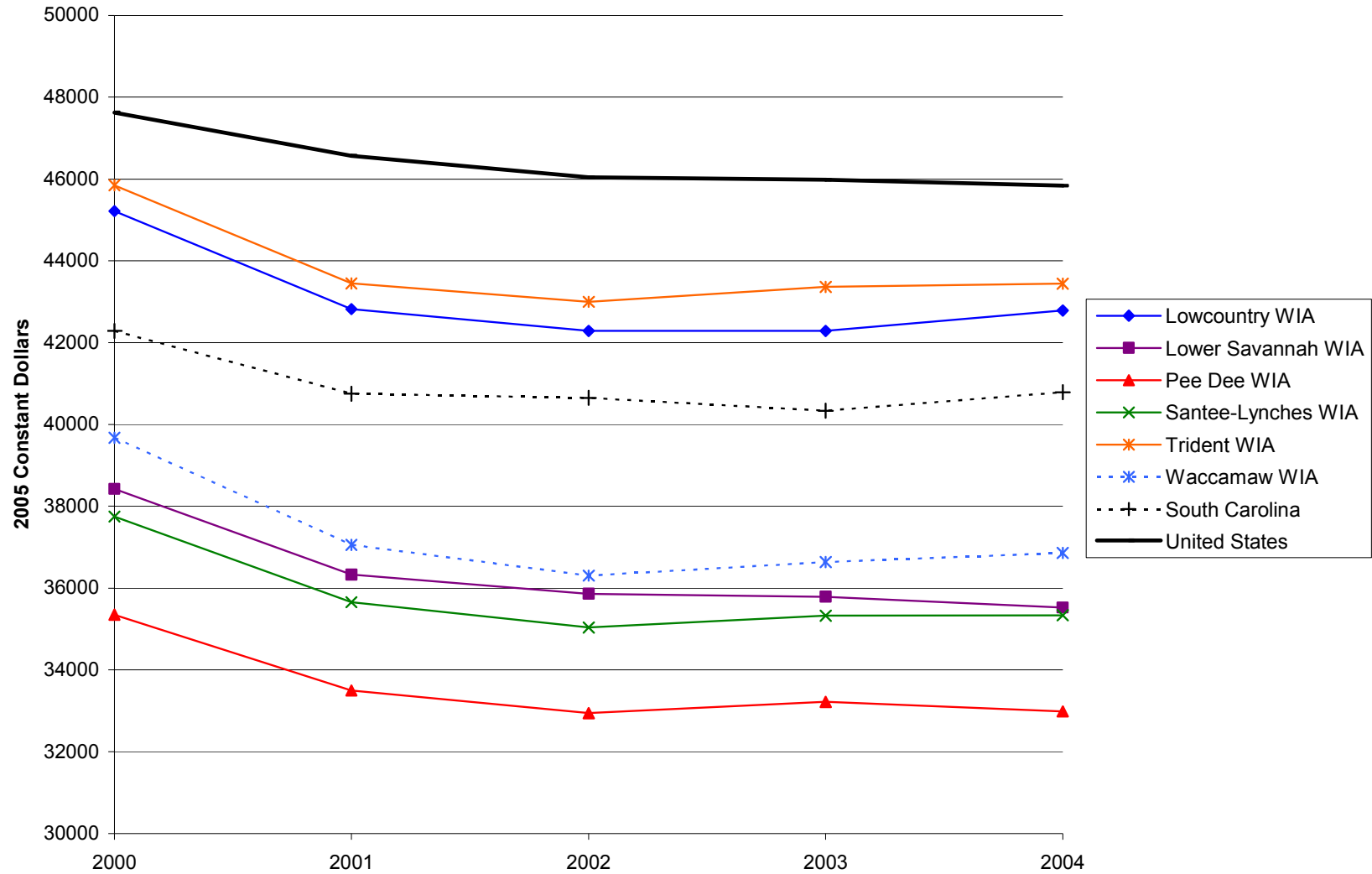


Figure B.7. Poverty Rates in SC Workforce Investment Areas, South Carolina, and United States, 2000-2004

Source: U.S. Census Bureau, Small Area Income and Poverty Estimates

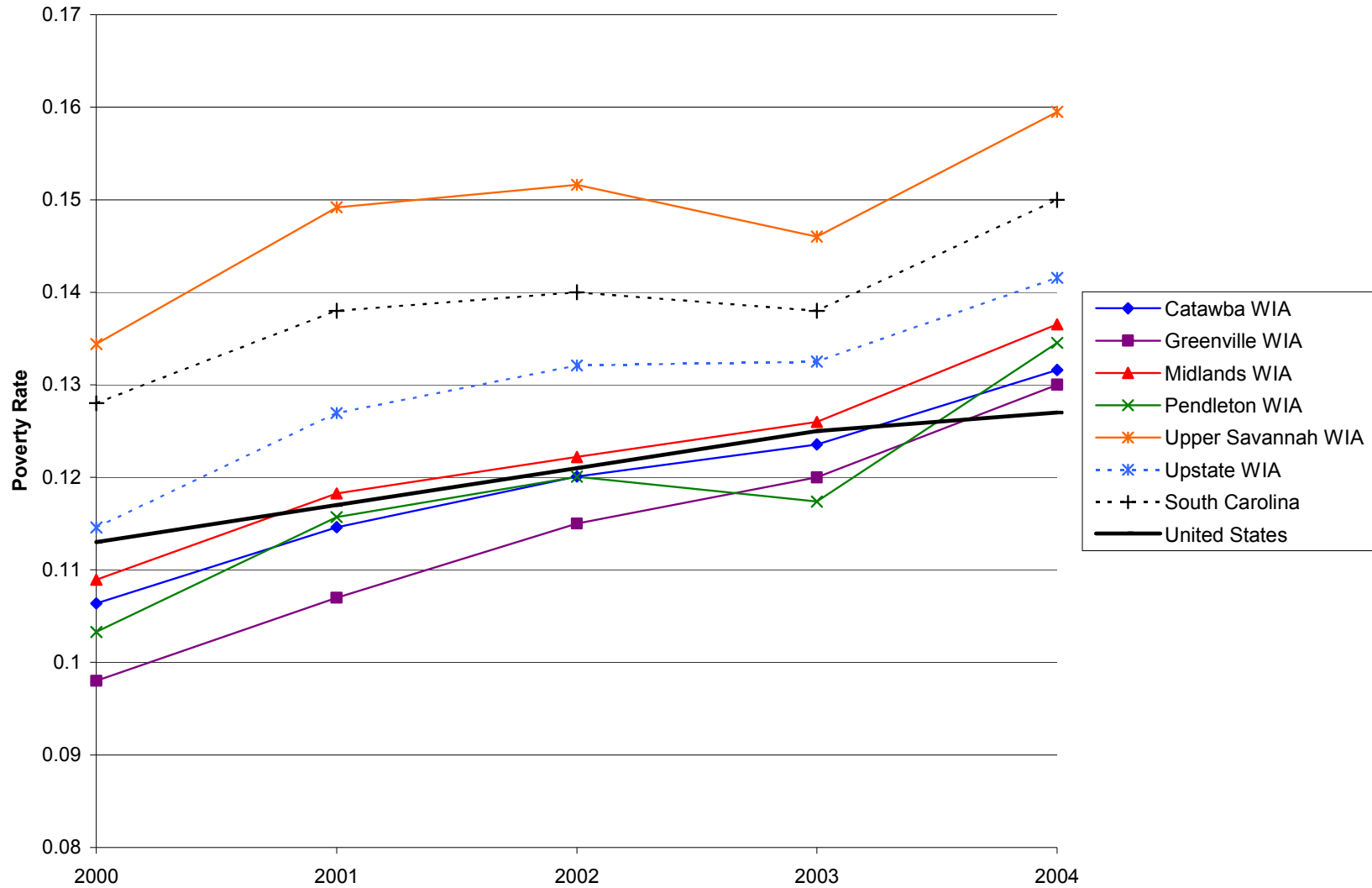
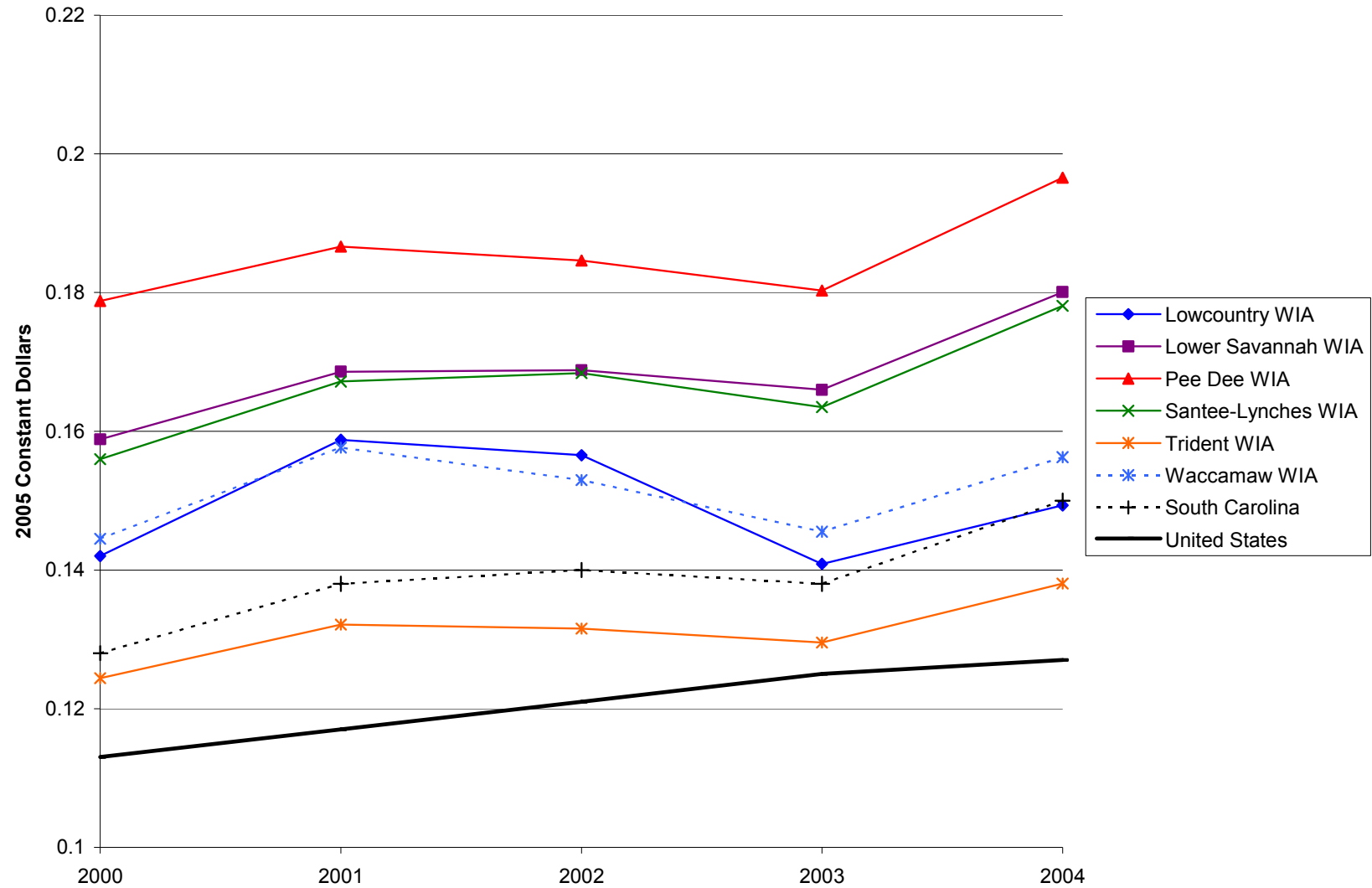


Figure B.8. Poverty Rates in SC Workforce Investment Areas, South Carolina, and United States, 2000-2004

Source: U.S. Census Bureau, Small Area Income and Poverty Estimates



C. Overview of Economic Trends in South Carolina's Work Force Investment Areas (WIAs): Innovative Activity, 2000-2006

Between 2000 and 2006, South Carolina scientists and inventors received 3,829 patents (Table C.1). Much of this innovative activity (1,985 patents) was concentrated in South Carolina's Upstate region, comprised of the Greenville (900 patents), Pendleton (517 patents) and Upstate (568 patents) WIAs. In 2006, the Greenville and Pendleton WIAs reported 7.8 patents and the Upstate WIA reported 7.1 patents per 10,000 employees; numbers only slightly less than the national average of 8 patents per 10,000 employees, and well above the state rate of 3.8 patents per 10,000 employees in the same year (Table C.2). Between 2005 and 2006 ten WIA regions increased patent activity leading to a net increase of 25% at the state level. Patent activity at the national level increased by 20.3% during the same period. Pendleton WIA increased its total patents from 56 in 2005 to 73 in 2006, patenting activity in the Midlands WIA region increased from 42 total patents in 2005 to 61 in 2006, Pee Dee WIA increased its total patents from 27 in 2005 to 49 total patents in 2006, and the Greenville WIA increased patent activity by 40 patents, from 119 to 159 total patents between 2005 and 2006 (Table C.1).

Innovative activity also may be reflected in funding for Small Business Innovation Research (SBIR) and Small Business Technology Transfer (STTR) Program research award dollars. In 2005 the U.S. average for SBIR and STTR funding was \$18,855 per 1,000 employees. South Carolina received only \$7,805 of funding per 1,000 employees in 2005 (Table C.5). On the other hand, state SBIR and STTR funding has grown significantly (159%) between 2000 and 2005. The WIAs receiving the largest dollar amounts per 1,000 employees (averaged over the past 6 years) include the Trident (\$12,459), Midlands (\$14,011), and Lowcountry (\$19,212) regions. Readers are encouraged to refer to Tables C.4 and C.5 for more information on SBIR and STTR awards because the funding is highly variable by region and year.

Figures C.1 through C.4 provide trend lines for the number of patents and SBIR/STTR award values for the period 2000-2005/2006. The 2000 values for each WIA region are normalized to the same starting value of "100" so that relative changes over time among the WIA regions are easily compared.

C. Innovative Activity

Geographic Area	Year							Percent Change	
C.1. Patents* (Total)									
	2000	2001	2002	2003	2004	2005	2006	2000-2006	2005-2006
Catawba WIA	29	29	37	30	29	21	29	0.0%	38.1%
Greenville WIA	104	139	139	124	116	119	159	52.9%	33.6%
Lowcountry WIA	23	15	16	15	18	18	19	-17.4%	5.6%
Lower Savannah WIA	27	26	21	31	14	13	14	-48.1%	7.7%
Midlands WIA	65	73	50	60	62	42	61	-6.2%	45.2%
Pee-Dee WIA	47	32	34	28	41	27	49	4.3%	81.5%
Pendleton WIA	68	84	81	86	69	56	73	7.4%	30.4%
Santee-Lynches WIA	7	6	6	6	4	10	3	-57.1%	-70.0%
Trident WIA	83	66	93	63	71	58	52	-37.3%	-10.3%
Upper Savannah WIA	11	7	16	9	9	4	12	9.1%	200.0%
Upstate WIA	62	74	88	103	77	77	87	40.3%	13.0%
Waccamaw WIA	6	12	18	15	12	16	17	183.3%	6.3%
South Carolina	532	565	600	570	523	462	577	8.5%	24.9%
United States	85,068	87,600	86,971	87,893	84,271	74,637	89,823	5.6%	20.3%

*U.S. utility patents issued to South Carolina inventors. Origin of the patent is determined by county of residence of the first-named inventor.

Source: United States Patent and Trademark Office, Patent Electronic Business Center. Available at: <http://www.uspto.gov/patft/index.html>

C.2 Patents per 10,000 Employees

	2000	2001	2002	2003	2004	2005	2006	2000-2006	2005-2006
Catawba WIA	3.7	3.9	4.9	4.0	3.7	2.6	3.5	-6.8%	33.3%
Greenville WIA	5.0	6.9	7.1	6.3	5.9	5.9	7.8	55.3%	30.7%
Lowcountry WIA	3.7	2.4	2.5	2.3	2.7	2.6	2.7	-28.7%	1.2%
Lower Savannah WIA	2.9	2.9	2.3	3.5	1.6	1.5	1.6	-45.5%	7.2%
Midlands WIA	2.9	3.3	2.2	2.7	2.7	1.8	2.6	-12.3%	39.8%
Pee-Dee WIA	4.4	3.1	3.3	2.7	4.1	2.8	5.0	13.6%	78.9%
Pendleton WIA	6.5	8.3	8.3	9.1	7.3	6.0	7.8	18.9%	30.1%
Santee-Lynches WIA	1.2	1.1	1.1	1.1	0.7	1.8	0.6	-54.0%	-69.6%
Trident WIA	4.3	3.4	4.8	3.2	3.5	2.7	2.4	-45.0%	-13.1%
Upper Savannah WIA	1.6	1.0	2.5	1.4	1.4	0.6	1.9	19.6%	201.6%
Upstate WIA	4.8	5.9	7.2	8.4	6.4	6.4	7.1	50.2%	12.0%
Waccamaw WIA	0.5	1.1	1.6	1.3	1.0	1.3	1.3	149.5%	1.1%
South Carolina	3.5	3.8	4.1	3.9	3.5	3.1	3.8	6.6%	22.1%
United States	7.7	8.0	8.1	8.2	7.8	6.7	8.0	3.1%	18.1%

*U.S. utility patents issued to South Carolina inventors. Origin of the patent is determined by county of residence of the first-named inventor.

Source: United States Patent and Trademark Office, Patent Electronic Business Center. Available at: <http://www.uspto.gov/patft/index.html>

C. Innovative Activity

Geographic Area	Year						
C.3 SBIR/STTR Phase I and II Total Award							
	2000	2001	2002	2003	2004	2005	2006
Catawba WIA	\$0	\$0	\$0	\$106,094	\$71,946	\$509,807	--
Greenville WIA	\$0	\$0	\$0	\$0	\$0	\$0	--
Lowcountry WIA	\$876,043	\$3,458,853	\$151,598	\$955,142	\$1,284,714	\$584,999	--
Lower Savannah WIA	\$79,293	\$0	\$0	\$105,984	\$0	\$0	--
Midlands WIA	\$884,634	\$2,035,441	\$2,129,007	\$5,416,367	\$4,389,367	\$4,213,057	--
Pee Dee WIA	\$0	\$103,379	\$0	\$0	\$0	\$0	--
Pendleton WIA	\$566,939	\$220,553	\$1,426,922	\$212,134	\$1,370,952	\$569,993	--
Santee-Lynches WIA	\$0	\$0	\$0	\$0	\$103,388	\$750,000	--
Trident WIA	\$2,103,528	\$826,627	\$4,447,892	\$1,384,584	\$1,262,472	\$4,985,811	--
Upper Savannah WIA	\$0	\$301,469	\$542,799	\$983,537	\$192,039	\$99,622	--
Upstate WIA	\$0	\$0	\$0	\$0	\$0	\$0	--
Waccamaw WIA	\$0	\$0	\$103,200	\$0	\$0	\$0	--
South Carolina	\$4,510,438	\$7,056,572	\$8,801,418	\$9,163,842	\$8,674,879	\$11,713,289	--
United States	\$1,257,527,341	\$1,347,688,392	\$1,727,713,504	\$1,975,343,060	\$2,298,627,590	\$2,085,560,074	--

Source : U.S. Small Business Administration, Technology Resources Network Available at: http://tech-net.sba.gov/tech-net/public/dsp_search.cfm

C.4 SBIR/STTR Award per 1,000 Employees

	2000	2001	2002	2003	2004	2005	2006
Catawba WIA	\$0	\$0	\$0	\$1,405	\$916	\$6,354	--
Greenville WIA	\$0	\$0	\$0	\$0	\$0	\$0	--
Lowcountry WIA	\$14,177	\$56,033	\$2,397	\$14,836	\$19,304	\$8,526	--
Lower Savannah WIA	\$854	\$0	\$0	\$1,187	\$0	\$0	--
Midlands WIA	\$3,965	\$9,063	\$9,490	\$24,099	\$19,122	\$18,327	--
Pee Dee WIA	\$0	\$989	\$0	\$0	\$0	\$0	--
Pendleton WIA	\$5,443	\$2,184	\$14,588	\$2,233	\$14,448	\$6,075	--
Santee-Lynches WIA	\$0	\$0	\$0	\$0	\$1,884	\$13,868	--
Trident WIA	\$10,966	\$4,315	\$22,820	\$6,960	\$6,138	\$23,553	--
Upper Savannah WIA	\$0	\$4,512	\$8,485	\$15,746	\$3,051	\$1,572	--
Upstate WIA	\$0	\$0	\$0	\$0	\$0	\$0	--
Waccamaw WIA	\$0	\$0	\$923	\$0	\$0	\$0	--
South Carolina	\$2,992	\$4,777	\$6,050	\$6,301	\$5,875	\$7,805	--
United States	\$11,430	\$12,330	\$16,060	\$18,450	\$21,187	\$18,855	--

Source : U.S. Small Business Administration, Technology Resources Network Available at: http://tech-net.sba.gov/tech-net/public/dsp_search.cfm

Figure C.1. Patents per 10,000 Employees: Workforce Investment Areas, South Carolina, and United States, 2000-2006

Source: United States Patent and Trademark Office, Patent Electronic Business Center

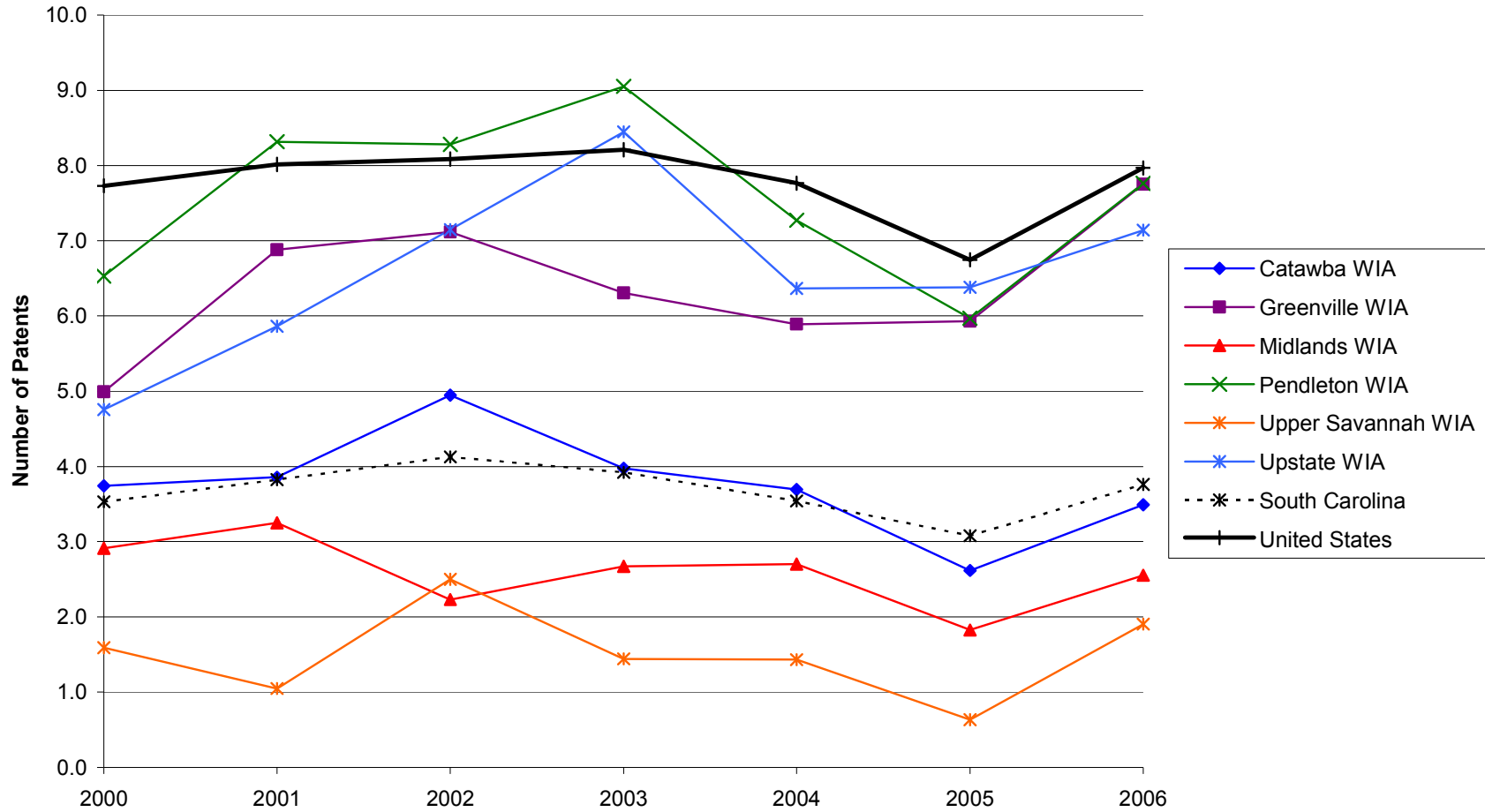


Figure C.2. Patents per 10,000 Employees: Workforce Investment Areas, South Carolina, and United States, 2000-2006

Source: United States Patent and Trademark Office, Patent Electronic Business Center

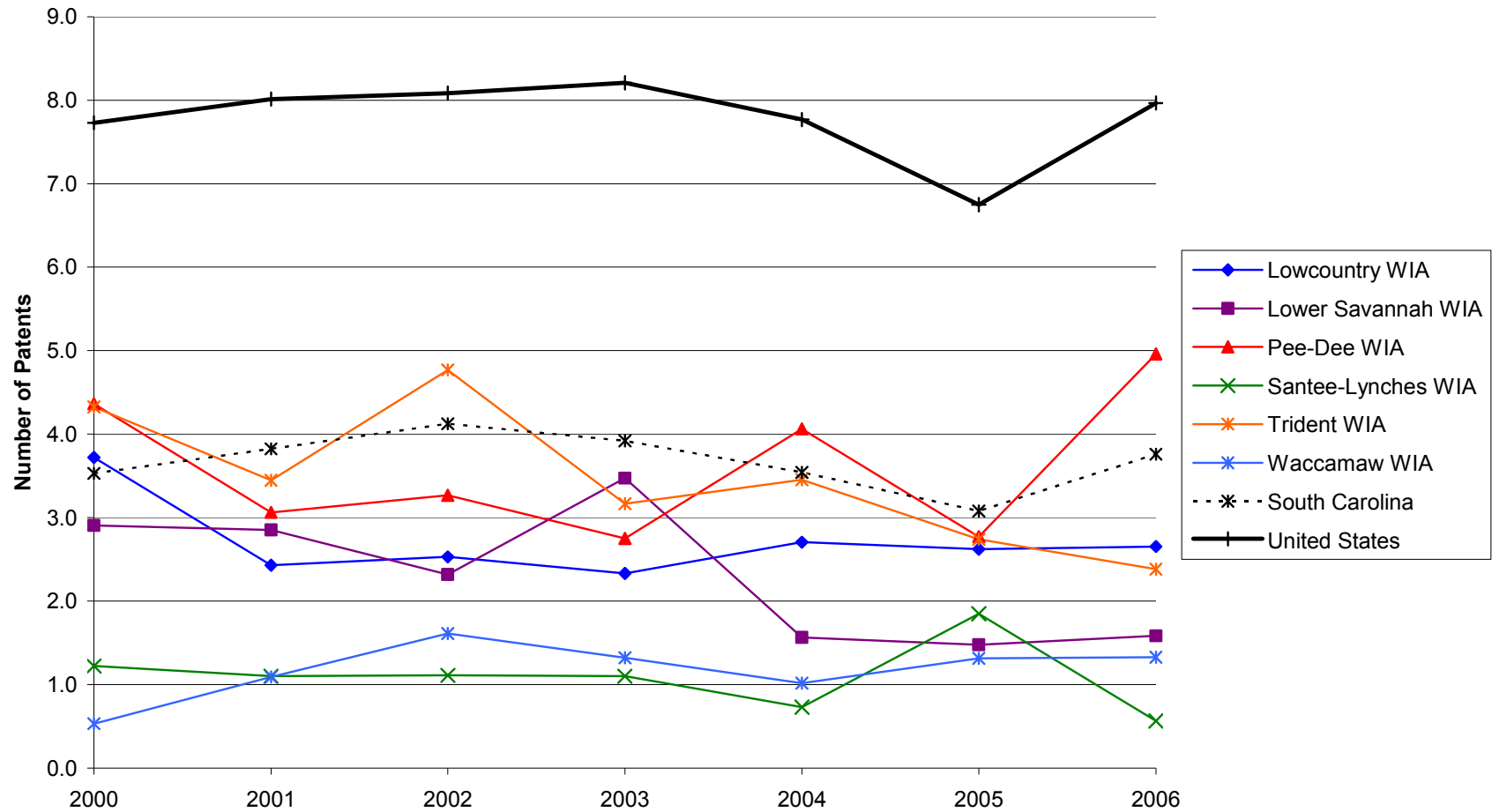


Figure C.3. SBIR/STTR Phase I and II Awards per 1,000 Employees: Workforce Investment Areas, South Carolina, and United States, 2000-2005

Source: U.S. Small Business Administration, Technology Resources Network

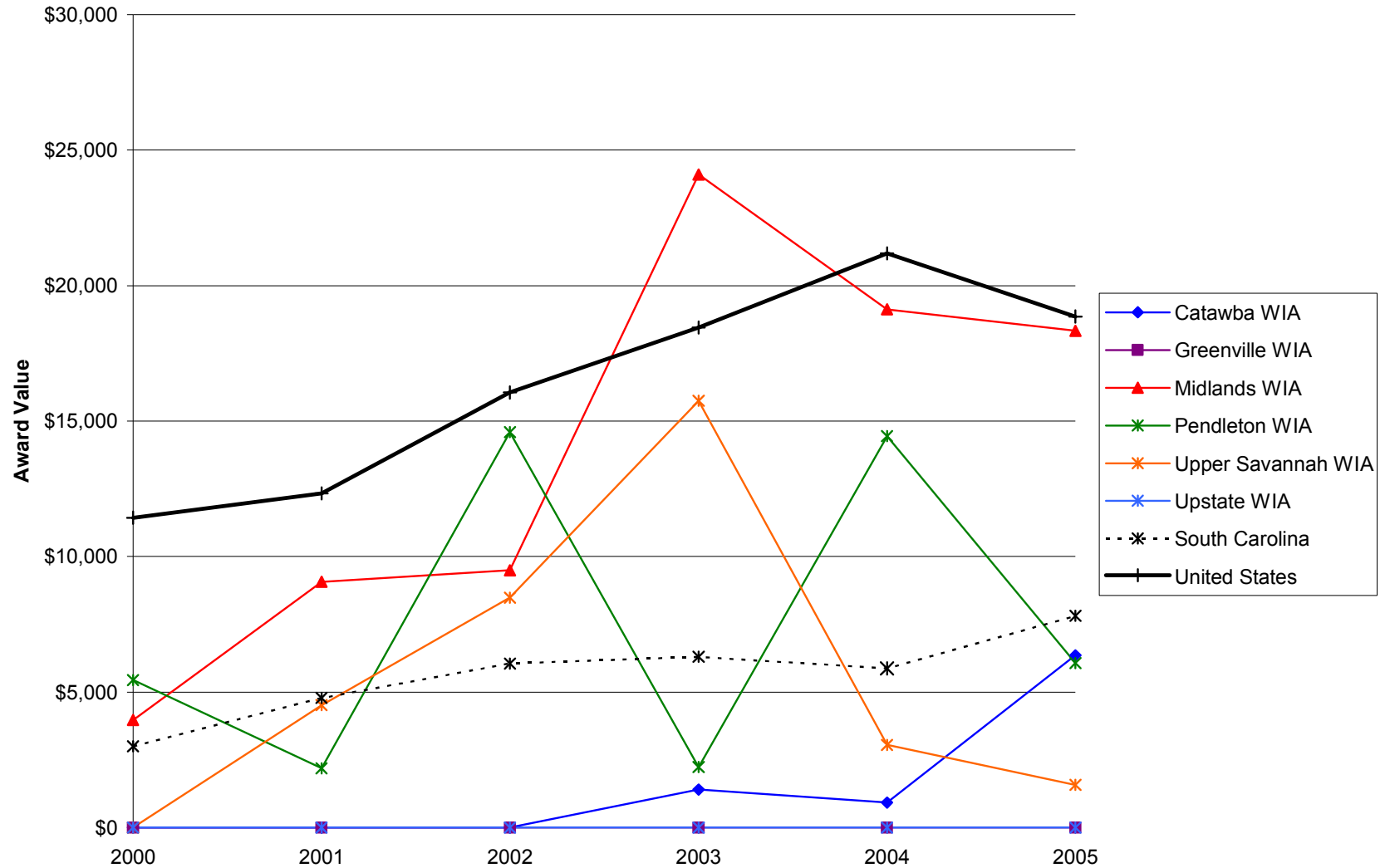
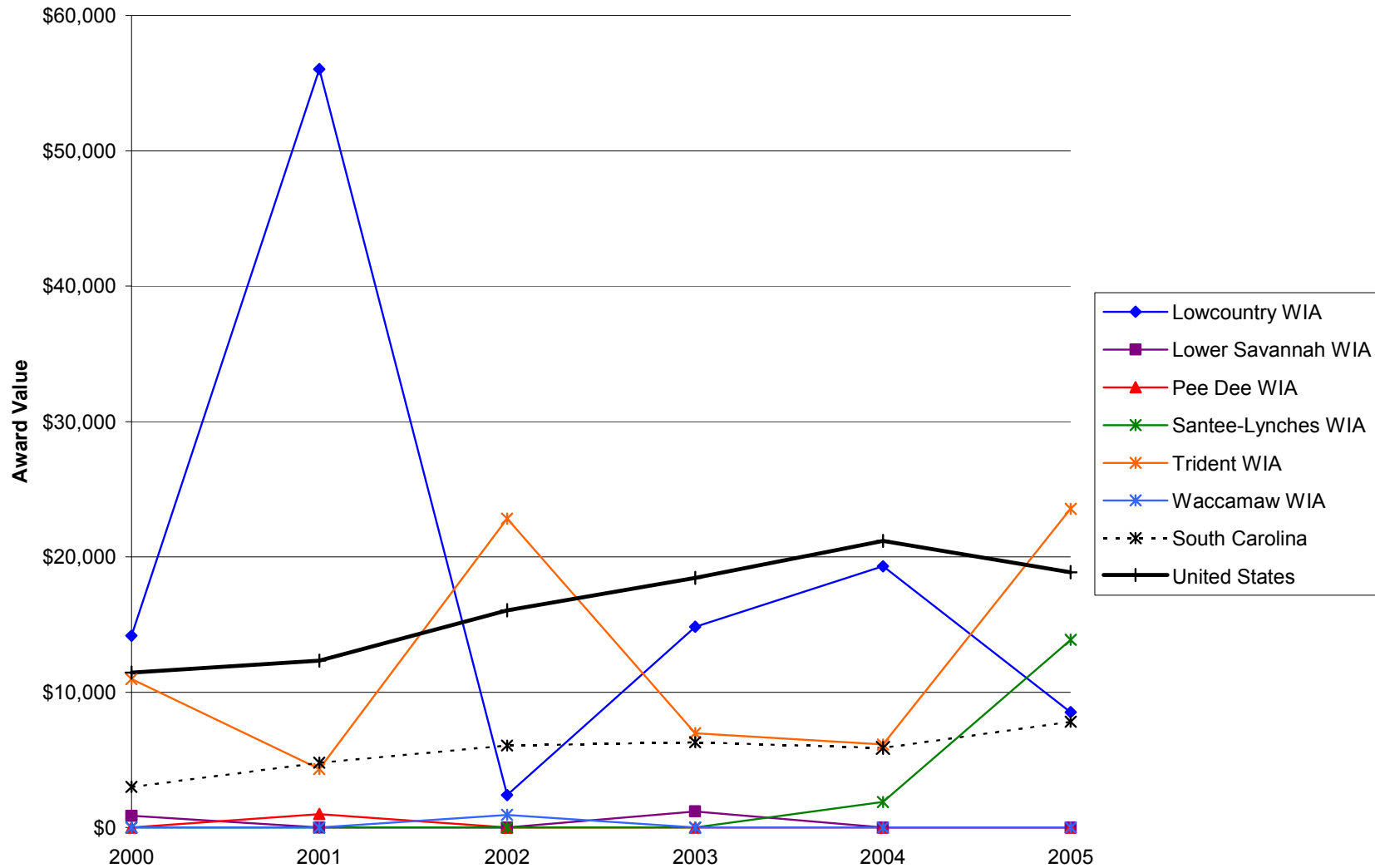


Figure C.4. SBIR/STTR Phase I and II Awards per 1,000 Employees: Workforce Investment Areas, South Carolina, and United States, 2000-2005

Source: U.S. Small Business Administration, Technology Resources Network



Private Establishments

FIPS	County	Year						Percent Change		
		2000	2001	2002	2003	2004	2005	2006	2000-2006	2005-2006
45001	Abbeville County	333	319	332	317	338	354	372	11.7%	5.1%
45003	Aiken County	2,759	2,753	2,842	2,781	2,746	2,889	3,135	13.6%	8.5%
45005	Allendale County	180	178	184	174	163	160	171	-5.0%	6.9%
45007	Anderson County	3,470	3,480	3,626	3,461	3,404	3,534	3,716	7.1%	5.1%
45009	Bamberg County	305	313	322	307	300	317	333	9.2%	5.0%
45011	Barnwell County	429	421	434	408	397	422	470	9.6%	11.4%
45013	Beaufort County	4,493	4,646	4,943	4,880	4,834	5,078	5,551	23.5%	9.3%
45015	Berkeley County	1,793	1,861	1,972	1,879	1,865	2,043	2,357	31.5%	15.4%
45017	Calhoun County	243	251	261	253	253	270	278	14.4%	3.0%
45019	Charleston County	11,370	11,606	12,244	11,848	11,552	12,187	13,291	16.9%	9.1%
45021	Cherokee County	987	994	1,031	995	960	986	1,025	3.9%	4.0%
45023	Chester County	585	592	615	580	540	558	608	3.9%	9.0%
45025	Chesterfield County	756	784	815	776	729	746	783	3.6%	5.0%
45027	Clarendon County	570	567	581	535	511	536	600	5.3%	11.9%
45029	Colleton County	883	908	941	891	850	884	937	6.1%	6.0%
45031	Darlington County	1,268	1,255	1,286	1,220	1,173	1,190	1,232	-2.8%	3.5%
45033	Dillon County	547	548	564	545	528	544	563	2.9%	3.5%
45035	Dorchester County	1,880	1,953	2,078	2,017	1,964	2,131	2,371	26.1%	11.3%
45037	Edgefield County	364	366	378	349	338	346	377	3.6%	9.0%
45039	Fairfield County	344	352	355	332	318	332	355	3.2%	6.9%
45041	Florence County	3,388	3,373	3,481	3,295	3,167	3,218	3,399	0.3%	5.6%
45043	Georgetown County	1,760	1,783	1,881	1,871	1,833	1,927	2,163	22.9%	12.2%
45045	Greenville County	11,811	11,950	12,518	12,201	11,821	12,299	13,146	11.3%	6.9%
45047	Greenwood County	1,558	1,546	1,584	1,535	1,457	1,486	1,544	-0.9%	3.9%
45049	Hampton County	486	496	495	462	445	468	491	1.0%	4.9%
45051	Horry County	7,755	7,817	8,199	7,910	7,820	8,301	9,160	18.1%	10.3%
45053	Jasper County	444	469	503	511	522	556	618	39.2%	11.2%
45055	Kershaw County	1,226	1,231	1,246	1,184	1,171	1,229	1,317	7.4%	7.2%
45057	Lancaster County	1,104	1,120	1,195	1,111	1,079	1,137	1,215	10.1%	6.9%
45059	Laurens County	912	917	942	877	839	856	892	-2.2%	4.2%
45061	Lee County	280	275	281	275	265	264	285	1.8%	8.0%
45063	Lexington County	5,201	5,295	5,607	5,467	5,333	5,653	6,089	17.1%	7.7%
45065	McCormick County	134	125	128	121	113	117	130	-3.0%	11.1%
45067	Marion County	691	676	665	626	603	613	642	-7.1%	4.7%
45069	Marlboro County	471	479	478	442	415	417	426	-9.6%	2.2%
45071	Newberry County	723	730	749	729	719	753	791	9.4%	5.0%
45073	Oconee County	1,467	1,489	1,554	1,506	1,485	1,556	1,654	12.7%	6.3%
45075	Orangeburg County	1,975	1,979	2,014	1,907	1,836	1,886	1,971	-0.2%	4.5%
45077	Pickens County	2,179	2,139	2,176	2,102	2,047	2,142	2,280	4.6%	6.4%
45079	Richland County	9,365	9,394	9,833	9,390	9,031	9,379	10,028	7.1%	6.9%
45081	Saluda County	275	283	297	281	266	276	293	6.5%	6.2%
45083	Spartanburg County	6,352	6,348	6,552	6,307	6,038	6,239	6,564	3.3%	5.2%
45085	Sumter County	1,975	1,976	2,063	1,973	1,938	2,014	2,137	8.2%	6.1%
45087	Union County	553	524	516	493	467	478	503	-9.0%	5.2%
45089	Williamsburg County	631	621	619	581	556	571	595	-5.7%	4.2%
45091	York County	3,945	4,011	4,257	4,138	4,102	4,313	4,732	19.9%	9.7%
	South Carolina	110,221	111,880	115,559	111,385	108,929	115,194	125,345	13.7%	8.8%
	United States	7,646,318	7,724,965	7,839,903	7,963,340	8,093,142	8,294,662	8,517,150	11.4%	2.7%

Source: Quarterly Census of Employment and Wages (2000-2006). U.S. Department of Labor, Bureau of Labor Statistics.
Available at: <http://www.bls.gov/cew/>

Employment

FIPS	County	Year						Percent Change		
		2000	2001	2002	2003	2004	2005	2006	2000-2006	2005-2006
45001	Abbeville County	6,165	5,785	5,383	5,145	5,258	5,429	5,156	-16.4%	-5.0%
45003	Aiken County	49,000	49,055	49,009	49,048	49,768	48,130	47,829	-2.4%	-0.6%
45005	Allendale County	2,537	2,493	2,376	2,179	2,060	2,018	2,928	15.4%	45.1%
45007	Anderson County	52,923	51,576	50,257	47,952	48,528	48,069	48,308	-8.7%	0.5%
45009	Bamberg County	3,668	3,664	3,709	3,851	3,777	3,736	3,593	-2.0%	-3.8%
45011	Barnwell County	6,972	6,554	6,266	5,865	5,801	5,674	5,348	-23.3%	-5.7%
45013	Beaufort County	45,235	45,591	46,788	48,399	50,108	51,860	52,947	17.0%	2.1%
45015	Berkeley County	25,312	25,697	26,750	26,386	27,242	28,449	29,658	17.2%	4.2%
45017	Calhoun County	3,079	3,064	3,017	3,166	3,092	3,282	3,286	6.7%	0.1%
45019	Charleston County	145,445	143,920	145,092	148,917	154,212	158,544	163,766	12.6%	3.3%
45021	Cherokee County	18,745	17,944	16,833	16,462	16,926	16,875	17,051	-9.0%	1.0%
45023	Chester County	10,002	9,525	8,708	8,405	8,560	9,127	8,924	-10.8%	-2.2%
45025	Chesterfield County	14,012	13,148	12,771	12,372	11,788	11,523	11,935	-14.8%	3.6%
45027	Clarendon County	5,701	5,475	5,484	5,404	5,531	5,396	5,510	-3.4%	2.1%
45029	Colleton County	8,427	8,286	8,361	8,124	8,354	8,238	8,691	3.1%	5.5%
45031	Darlington County	19,232	18,808	18,565	18,017	17,795	17,776	17,799	-7.5%	0.1%
45033	Dillon County	8,075	7,578	7,649	7,537	7,464	7,893	7,815	-3.2%	-1.0%
45035	Dorchester County	21,067	21,964	23,069	23,637	24,222	24,694	24,958	18.5%	1.1%
45037	Edgefield County	4,721	4,709	4,916	4,843	5,090	4,699	4,438	-6.0%	-5.6%
45039	Fairfield County	5,977	5,320	5,126	4,239	4,220	4,310	4,404	-26.3%	2.2%
45041	Florence County	50,981	50,548	50,950	50,134	50,400	47,337	48,646	-4.6%	2.8%
45043	Georgetown County	17,256	17,236	17,132	16,639	17,520	18,226	18,884	9.4%	3.6%
45045	Greenville County	208,351	201,959	195,368	196,613	196,899	200,653	205,127	-1.5%	2.2%
45047	Greenwood County	25,973	25,250	23,803	23,364	23,446	23,234	22,967	-11.6%	-1.1%
45049	Hampton County	4,705	4,382	4,238	3,826	3,786	3,751	3,750	-20.3%	0.0%
45051	Horry County	88,019	85,700	87,727	89,869	93,528	96,269	101,881	15.7%	5.8%
45053	Jasper County	3,426	3,470	3,861	4,033	4,302	4,768	6,182	80.4%	29.7%
45055	Kershaw County	14,588	14,238	14,453	14,862	15,004	14,427	14,500	-0.6%	0.5%
45057	Lancaster County	16,320	15,708	15,261	14,309	14,276	14,066	14,078	-13.7%	0.1%
45059	Laurens County	16,065	15,464	14,514	13,459	13,719	14,486	14,516	-9.6%	0.2%
45061	Lee County	2,580	2,519	2,562	2,561	2,626	2,543	2,475	-4.1%	-2.7%
45063	Lexington County	68,242	67,534	68,214	69,023	71,540	73,413	76,167	11.6%	3.8%
45065	McCormick County	1,252	1,127	1,134	1,055	1,002	1,044	1,090	-12.9%	4.4%
45067	Marion County	9,230	8,227	7,999	7,707	7,326	6,718	6,430	-30.3%	-4.3%
45069	Marlboro County	6,146	6,188	6,080	6,097	6,127	6,145	6,154	0.1%	0.1%
45071	Newberry County	11,172	10,777	10,421	10,908	10,970	10,975	11,228	0.5%	2.3%
45073	Oconee County	21,912	21,436	20,742	20,277	19,827	18,907	17,716	-19.1%	-6.3%
45075	Orangeburg County	27,598	26,383	26,209	25,143	25,011	25,144	25,395	-8.0%	1.0%
45077	Pickens County	29,319	27,975	26,814	26,771	26,532	26,850	27,998	-4.5%	4.3%
45079	Richland County	148,865	151,733	150,992	151,496	153,785	152,159	158,257	6.3%	4.0%
45081	Saluda County	3,752	3,708	3,797	3,689	3,452	3,491	3,618	-3.6%	3.6%
45083	Spartanburg County	103,729	100,801	99,202	98,860	97,747	97,764	99,209	-4.4%	1.5%
45085	Sumter County	34,489	32,359	31,587	31,695	31,705	31,716	30,947	-10.3%	-2.4%
45087	Union County	7,885	7,452	7,040	6,586	6,279	6,057	5,551	-29.6%	-8.4%
45089	Williamsburg County	7,446	7,293	6,942	7,112	7,142	7,270	7,256	-2.6%	-0.2%
45091	York County	51,154	49,945	50,847	52,815	55,675	57,038	60,099	17.5%	5.4%
	South Carolina	1,507,621	1,477,097	1,454,665	1,454,329	1,476,668	1,500,676	1,534,579	1.8%	2.3%
	United States	110,023,983	109,304,802	107,577,281	107,065,553	108,490,066	110,611,016	112,719,311	2.4%	1.9%

Source: Quarterly Census of Employment and Wages (2000-2006). U.S. Department of Labor, Bureau of Labor Statistics.
Available at: <http://www.bls.gov/cew/>

Manufacturing Employment

FIPS	County	Year							Percent Change	
		2000	2001	2002	2003	2004	2005	2006	2000-2006	2005-2006
45001	Abbeville County	3,527	3,253	2,826	2,659	2,655	2,617	2,394	-32.1%	-8.5%
45003	Aiken County	8,960	8,960	8,433	8,288	8,231	8,036	7,500	-16.3%	-6.7%
45005	Allendale County	1,386	1,350	1,247	1,104	1,079	1,063	1,141	-17.7%	7.3%
45007	Anderson County	19,027	17,529	16,025	14,067	14,119	14,334	13,943	-26.7%	-2.7%
45009	Bamberg County	1,189	1,125	1,011	853	862	865	846	-28.8%	-2.2%
45011	Barnwell County	3,564	3,297	2,932	2,797	2,742	2,677	2,414	-32.3%	-9.8%
45013	Beaufort County	1,035	966	913	962	1,011	976	1,013	-2.1%	3.8%
45015	Berkeley County	7,817	7,554	7,188	7,062	6,322	6,274	6,317	-19.2%	0.7%
45017	Calhoun County	1,714	1,515	1,391	1,426	1,415	1,409	1,439	-16.0%	2.1%
45019	Charleston County	9,567	9,084	8,444	8,342	9,021	9,474	9,816	2.6%	3.6%
45021	Cherokee County	8,798	7,919	6,807	6,535	6,225	6,274	6,307	-28.3%	0.5%
45023	Chester County	5,463	4,977	4,350	4,008	3,902	4,165	3,892	-28.8%	-6.6%
45025	Chesterfield County	7,119	6,625	6,156	5,736	5,399	5,006	5,114	-28.2%	2.2%
45027	Clarendon County	1,578	1,357	1,240	1,222	1,267	1,155	1,074	-31.9%	-7.0%
45029	Colleton County	1,847	1,634	1,588	1,569	1,632	1,636	1,768	-4.3%	8.1%
45031	Darlington County	6,960	6,587	6,229	5,910	5,685	5,745	5,593	-19.6%	-2.6%
45033	Dillon County	3,289	2,884	2,881	2,907	3,036	2,629	2,609	-20.7%	-0.8%
45035	Dorchester County	4,828	5,052	5,198	5,097	5,474	5,406	5,079	5.2%	-6.0%
45037	Edgefield County	1,881	1,465	1,317	1,354	1,388	1,247	1,221	-35.1%	-2.1%
45039	Fairfield County	2,418	1,951	1,661	845	735	819	758	-68.7%	-7.4%
45041	Florence County	11,105	10,870	10,187	9,413	8,783	8,703	8,517	-23.3%	-2.1%
45043	Georgetown County	3,232	2,893	2,498	2,072	2,058	2,190	2,205	-31.8%	0.7%
45045	Greenville County	44,268	42,908	38,429	37,360	35,286	34,331	30,950	-30.1%	-9.8%
45047	Greenwood County	10,631	10,362	9,245	8,571	8,258	7,730	7,503	-29.4%	-2.9%
45049	Hampton County	1,127	1,069	1,054	870	815	890	879	-22.0%	-1.2%
45051	Horry County	6,659	5,606	5,017	4,486	4,335	4,146	4,294	-35.5%	3.6%
45053	Jasper County	452	372	459	457	486	503	666	47.3%	32.4%
45055	Kershaw County	4,921	4,689	4,540	4,606	4,277	4,046	3,884	-21.1%	-4.0%
45057	Lancaster County	6,169	5,925	5,630	4,689	4,489	4,346	3,950	-36.0%	-9.1%
45059	Laurens County	6,489	5,894	5,122	3,922	4,047	4,453	4,413	-32.0%	-0.9%
45061	Lee County	425	357	439	364	380	432	412	-3.1%	-4.6%
45063	Lexington County	13,734	13,470	13,142	11,807	11,876	11,909	11,697	-14.8%	-1.8%
45065	McCormick County	407	352	331	313	281	254	308	-24.3%	21.3%
45067	Marion County	4,429	3,485	3,151	2,899	2,838	2,313	2,039	-54.0%	-11.8%
45069	Marlboro County	3,015	3,171	3,141	3,096	3,078	3,068	3,048	1.1%	-0.7%
45071	Newberry County	4,712	4,497	4,066	4,080	4,381	4,268	4,482	-4.9%	5.0%
45073	Oconee County	9,656	8,914	8,026	7,460	7,274	6,627	5,630	-41.7%	-15.0%
45075	Orangeburg County	8,817	7,675	7,609	7,449	7,281	7,236	6,971	-20.9%	-3.7%
45077	Pickens County	9,196	7,908	6,976	6,769	6,149	6,117	6,628	-27.9%	8.4%
45079	Richland County	12,458	11,967	11,587	12,176	11,189	11,333	11,378	-8.7%	0.4%
45081	Saluda County	1,926	1,862	1,751	1,739	1,627	1,696	1,754	-8.9%	3.4%
45083	Spartanburg County	36,437	34,859	32,344	31,587	30,419	29,253	27,744	-23.9%	-5.2%
45085	Sumter County	12,527	11,333	10,328	10,300	9,857	9,138	8,456	-32.5%	-7.5%
45087	Union County	3,853	3,394	3,217	3,074	2,717	2,471	2,069	-46.3%	-16.3%
45089	Williamsburg County	3,008	2,595	2,287	2,220	2,247	2,162	2,134	-29.1%	-1.3%
45091	York County	11,590	10,523	10,191	9,988	9,724	10,131	10,304	-11.1%	1.7%
	South Carolina	335,118	313,735	290,107	276,080	267,426	262,714	253,837	-24.3%	-3.4%
	United States	17,314,423	16,386,001	15,209,192	14,459,712	14,257,380	14,190,394	14,113,387	-18.5%	-0.5%

Source : Quarterly Census of Employment and Wages (2000-2006). U.S. Department of Labor, Bureau of Labor Statistics
Available at: <http://www.bls.gov/cew/>

Unemployment

FIPS	County	Year							Percent Change	
		2000	2001	2002	2003	2004	2005	2006	2000-2006	2005-2006
45001	Abbeville County	456	803	930	1,042	977	933	1,085	137.9%	16.3%
45003	Aiken County	2,588	3,379	3,495	3,695	4,170	4,351	4,906	89.6%	12.8%
45005	Allendale County	188	220	252	290	317	349	405	115.4%	16.0%
45007	Anderson County	2,551	4,416	5,189	5,832	5,958	6,199	5,829	128.5%	-6.0%
45009	Bamberg County	325	419	435	499	468	566	658	102.5%	16.3%
45011	Barnwell County	501	688	775	898	894	848	952	90.0%	12.3%
45013	Beaufort County	1,576	1,968	2,248	2,672	2,926	3,003	3,040	92.9%	1.2%
45015	Berkeley County	2,100	2,818	2,919	3,673	3,875	3,816	4,200	100.0%	10.1%
45017	Calhoun County	263	415	446	478	468	520	517	96.6%	-0.6%
45019	Charleston County	4,902	6,173	7,135	8,380	8,890	9,106	8,735	78.2%	-4.1%
45021	Cherokee County	1,054	1,768	2,008	2,105	2,221	1,967	1,967	86.6%	0.0%
45023	Chester County	819	1,239	1,570	1,713	1,540	1,462	1,685	105.7%	15.3%
45025	Chesterfield County	874	1,400	1,447	1,851	1,824	1,708	1,812	107.3%	6.1%
45027	Clarendon County	691	952	977	1,102	1,128	1,236	1,223	77.0%	-1.1%
45029	Colleton County	596	789	962	1,167	1,184	1,176	1,128	89.3%	-4.1%
45031	Darlington County	1,507	1,928	2,152	2,543	2,532	2,664	2,432	61.4%	-8.7%
45033	Dillon County	908	1,186	1,040	1,238	1,258	1,280	1,273	40.2%	-0.5%
45035	Dorchester County	1,407	1,919	2,101	2,599	2,710	3,004	3,050	116.8%	1.5%
45037	Edgefield County	370	486	512	525	638	800	878	137.3%	9.8%
45039	Fairfield County	539	934	952	1,196	900	886	1,053	95.4%	18.8%
45041	Florence County	2,430	3,239	3,917	4,725	5,133	5,509	4,610	89.7%	-16.3%
45043	Georgetown County	1,373	1,917	2,167	2,654	2,658	2,481	2,144	56.2%	-13.6%
45045	Greenville County	5,294	7,552	9,693	11,045	12,132	11,568	11,729	121.6%	1.4%
45047	Greenwood County	1,370	2,212	2,837	2,960	2,824	2,950	2,568	87.4%	-12.9%
45049	Hampton County	352	497	604	747	722	647	586	66.5%	-9.4%
45051	Horry County	3,733	5,043	5,494	6,362	6,891	6,998	7,057	89.0%	0.8%
45053	Jasper County	324	391	474	565	544	522	503	55.2%	-3.6%
45055	Kershaw County	996	1,378	1,642	1,746	1,742	1,903	1,903	91.1%	0.0%
45057	Lancaster County	1,085	1,625	1,946	2,620	2,629	2,491	2,807	158.7%	12.7%
45059	Laurens County	1,096	2,202	2,547	2,475	2,354	2,225	2,372	116.4%	6.6%
45061	Lee County	460	572	605	696	716	787	822	78.7%	4.4%
45063	Lexington County	3,137	4,151	4,648	5,496	6,088	6,247	6,177	96.9%	-1.1%
45065	McCormick County	233	353	398	454	385	397	402	72.5%	1.3%
45067	Marion County	1,421	1,778	1,539	1,833	1,917	1,883	1,648	16.0%	-12.5%
45069	Marlboro County	818	1,170	1,215	1,630	1,613	1,429	1,422	73.8%	-0.5%
45071	Newberry County	717	1,064	1,251	1,317	1,282	1,234	1,178	64.3%	-4.5%
45073	Oconee County	1,116	1,733	2,128	2,393	2,357	2,751	2,792	150.2%	1.5%
45075	Orangeburg County	2,327	3,398	3,504	3,983	3,742	3,909	3,821	64.2%	-2.3%
45077	Pickens County	1,721	2,848	3,317	3,770	3,835	3,741	3,679	113.8%	-1.7%
45079	Richland County	5,196	6,594	7,587	9,231	10,088	10,194	10,325	98.7%	1.3%
45081	Saluda County	336	477	532	573	686	617	598	78.0%	-3.1%
45083	Spartanburg County	4,554	6,864	8,589	9,344	9,941	9,855	9,041	98.5%	-8.3%
45085	Sumter County	1,877	2,827	3,106	3,351	3,568	3,951	3,667	95.4%	-7.2%
45087	Union County	713	1,244	1,431	1,484	1,575	1,374	1,369	92.0%	-0.4%
45089	Williamsburg County	1,126	1,520	1,608	1,980	1,819	1,741	1,565	39.0%	-10.1%
45091	York County	2,801	4,263	5,883	6,833	6,820	6,414	6,452	130.3%	0.6%
	South Carolina	70,821	100,811	116,205	133,767	138,938	139,693	138,061	94.9%	-1.2%
	United States	5,692,000	6,801,000	8,378,000	8,774,000	8,149,000	7,591,000	7,001,000	23.0%	-7.8%

Source : Local Area Unemployment Statistics. U.S. Department of Labor, Bureau of Labor Statistics.
Available at: <http://www.bls.gov/lau/home.htm>

Unemployment Rate

FIPS	County	Year							Rate Change	
		2000	2001	2002	2003	2004	2005	2006	2000-2006	2005-2006
45001	Abbeville County	3.7	6.5	7.9	8.8	8.2	7.7	8.8	5.1	1.1
45003	Aiken County	3.7	5.0	5.0	5.2	5.7	5.8	6.5	2.7	0.6
45005	Allendale County	5.1	6.1	7.2	8.5	9.6	10.6	11.5	6.4	0.9
45007	Anderson County	3.0	5.3	6.3	7.1	7.1	7.3	6.8	3.8	-0.5
45009	Bamberg County	5.0	6.6	6.9	7.6	7.3	8.6	9.9	4.9	1.3
45011	Barnwell County	4.9	6.9	8.0	9.3	9.5	9.0	10.2	5.3	1.2
45013	Beaufort County	3.1	3.9	4.2	4.7	4.9	4.9	5.0	1.9	0.2
45015	Berkeley County	3.2	4.4	4.4	5.4	5.5	5.3	5.6	2.4	0.3
45017	Calhoun County	3.7	5.9	6.4	6.8	6.6	7.3	7.0	3.3	-0.3
45019	Charleston County	3.2	4.1	4.6	5.3	5.4	5.4	5.1	1.8	-0.4
45021	Cherokee County	4.1	7.0	8.2	8.6	8.8	7.9	7.8	3.7	-0.1
45023	Chester County	5.0	7.7	10.0	10.9	9.8	9.2	10.3	5.3	1.1
45025	Chesterfield County	4.5	7.4	7.8	9.8	10.0	9.4	9.7	5.2	0.3
45027	Clarendon County	5.3	7.5	7.7	8.6	8.9	9.7	9.4	4.1	-0.3
45029	Colleton County	3.7	5.0	6.0	7.2	7.2	7.1	6.8	3.1	-0.3
45031	Darlington County	4.8	6.3	7.0	8.1	8.2	8.7	7.7	2.9	-0.9
45033	Dillon County	6.7	9.2	8.0	9.3	9.7	9.4	9.5	2.9	0.1
45035	Dorchester County	3.0	4.1	4.3	5.1	5.1	5.3	5.2	2.2	-0.1
45037	Edgefield County	3.6	4.8	5.0	4.9	5.8	7.1	7.7	4.1	0.6
45039	Fairfield County	4.9	8.4	8.5	10.5	7.9	7.8	8.8	4.0	1.1
45041	Florence County	4.0	5.5	6.6	7.7	8.4	8.9	7.3	3.3	-1.6
45043	Georgetown County	5.3	7.4	8.3	9.8	9.5	8.6	7.5	2.1	-1.1
45045	Greenville County	2.6	3.7	4.8	5.5	5.9	5.5	5.4	2.8	-0.1
45047	Greenwood County	4.2	6.8	8.9	9.3	8.7	9.0	8.1	3.9	-1.0
45049	Hampton County	4.2	6.2	7.4	9.3	9.3	8.3	7.4	3.2	-0.9
45051	Horry County	3.5	4.9	5.2	5.7	5.9	5.7	5.4	1.9	-0.3
45053	Jasper County	3.5	4.3	5.1	5.8	5.5	5.1	5.1	1.5	-0.1
45055	Kershaw County	3.7	5.1	6.1	6.3	6.2	6.5	6.3	2.6	-0.2
45057	Lancaster County	3.6	5.4	6.6	8.9	8.8	8.3	9.1	5.5	0.7
45059	Laurens County	3.2	6.5	7.6	7.5	7.1	6.7	6.9	3.7	0.2
45061	Lee County	5.6	7.0	7.5	8.4	8.7	9.4	9.7	4.1	0.2
45063	Lexington County	2.6	3.6	3.9	4.5	4.9	4.9	4.7	2.0	-0.2
45065	McCormick County	6.2	9.6	10.9	12.5	11.1	11.1	11.1	4.8	0.0
45067	Marion County	9.2	12.3	11.0	12.8	13.5	13.6	12.2	3.0	-1.4
45069	Marlboro County	6.7	9.5	10.0	12.9	12.9	11.3	11.1	4.4	-0.3
45071	Newberry County	4.1	6.2	7.3	7.4	7.3	6.9	6.6	2.4	-0.4
45073	Oconee County	3.4	5.4	6.7	7.5	7.4	8.6	9.0	5.6	0.4
45075	Orangeburg County	5.7	8.6	8.8	9.9	9.4	9.6	9.5	3.8	-0.1
45077	Pickens County	3.0	5.0	5.9	6.7	6.7	6.5	6.2	3.2	-0.3
45079	Richland County	3.2	4.2	4.7	5.6	6.0	5.9	5.8	2.6	-0.1
45081	Saluda County	3.6	5.2	5.8	6.2	7.4	6.6	6.2	2.6	-0.4
45083	Spartanburg County	3.5	5.4	6.7	7.2	7.5	7.4	6.7	3.2	-0.8
45085	Sumter County	4.2	6.5	7.2	7.5	7.8	8.5	7.9	3.7	-0.5
45087	Union County	5.0	8.9	10.5	11.1	12.1	10.8	10.9	5.8	0.1
45089	Williamsburg County	7.4	10.2	10.8	12.7	12.0	11.1	9.9	2.5	-1.2
45091	York County	3.2	4.8	6.5	7.3	7.2	6.6	6.4	3.2	-0.2
	South Carolina	3.6	5.2	5.9	6.7	6.8	6.7	6.5	2.9	-0.2
	United States	4.0	4.7	5.8	6.0	5.5	5.1	4.6	0.6	-0.5

Source : South Carolina Employment Security Commission: Labor Force and Employment.
Available at: <http://www.sces.org/LMI/data/labor-force/lf.asp>

Earnings per Worker (Constant Dollars*)

FIPS	County	Year						Percent Change	
		2000	2001	2002	2003	2004	2005	2000-2005	2004-2005
45001	Abbeville County	31,119	29,105	27,909	27,645	27,831	27,675	-11.1%	-0.6%
45003	Aiken County	39,169	38,950	39,785	39,628	39,479	39,456	0.7%	-0.1%
45005	Allendale County	29,779	29,631	30,708	30,974	31,836	33,064	11.0%	3.9%
45007	Anderson County	29,330	29,813	29,395	29,554	29,514	29,168	-0.6%	-1.2%
45009	Bamberg County	23,675	23,491	24,255	23,679	23,973	23,488	-0.8%	-2.0%
45011	Barnwell County	38,979	27,139	27,181	27,505	27,679	27,716	-28.9%	0.1%
45013	Beaufort County	29,709	30,243	29,858	30,457	31,159	31,777	7.0%	2.0%
45015	Berkeley County	32,683	32,844	33,430	34,193	34,707	34,962	7.0%	0.7%
45017	Calhoun County	31,115	31,495	31,320	30,680	32,592	31,983	2.8%	-1.9%
45019	Charleston County	31,625	32,643	33,529	33,750	33,995	34,740	9.9%	2.2%
45021	Cherokee County	29,979	29,580	29,721	30,262	30,831	30,021	0.1%	-2.6%
45023	Chester County	29,330	28,899	30,767	30,706	30,793	31,024	5.8%	0.7%
45025	Chesterfield County	28,958	29,055	29,138	29,462	28,977	28,229	-2.5%	-2.6%
45027	Clarendon County	23,098	23,775	24,050	24,526	25,246	25,245	9.3%	0.0%
45029	Colleton County	26,203	26,277	25,887	25,934	26,772	26,859	2.5%	0.3%
45031	Darlington County	32,944	33,072	33,394	33,819	33,881	34,207	3.8%	1.0%
45033	Dillon County	23,221	23,615	24,325	24,759	24,919	24,529	5.6%	-1.6%
45035	Dorchester County	27,849	28,076	27,985	28,396	29,133	28,875	3.7%	-0.9%
45037	Edgefield County	26,578	26,335	26,585	27,146	27,016	27,231	2.5%	0.8%
45039	Fairfield County	38,931	34,814	35,536	35,382	34,974	34,649	-11.0%	-0.9%
45041	Florence County	31,137	31,616	31,906	31,749	32,251	32,048	2.9%	-0.6%
45043	Georgetown County	27,221	27,327	28,565	28,849	28,942	29,877	9.8%	3.2%
45045	Greenville County	35,299	35,753	35,976	35,784	35,795	35,700	1.1%	-0.3%
45047	Greenwood County	31,550	31,002	31,070	31,130	31,039	30,432	-3.5%	-2.0%
45049	Hampton County	29,187	30,617	30,364	30,280	31,183	30,924	6.0%	-0.8%
45051	Horry County	26,229	26,665	26,925	27,306	27,306	27,275	4.0%	-0.1%
45053	Jasper County	25,051	25,353	26,010	26,605	28,356	29,052	16.0%	2.5%
45055	Kershaw County	29,513	29,197	29,545	30,231	30,022	30,077	1.9%	0.2%
45057	Lancaster County	29,935	30,392	30,305	30,764	30,911	31,742	6.0%	2.7%
45059	Laurens County	28,568	28,127	28,032	28,157	28,668	28,544	-0.1%	-0.4%
45061	Lee County	24,575	24,492	24,490	24,239	24,470	25,402	3.4%	3.8%
45063	Lexington County	30,605	30,276	30,416	30,720	31,677	31,408	2.6%	-0.8%
45065	McCormick County	24,558	24,927	25,312	25,997	26,145	25,581	4.2%	-2.2%
45067	Marion County	25,314	25,404	25,595	25,697	25,649	25,698	0.2%	0.2%
45069	Marlboro County	28,017	27,937	28,521	28,238	28,844	29,367	4.8%	1.8%
45071	Newberry County	26,479	26,949	27,380	27,417	27,778	27,487	3.8%	-1.0%
45073	Oconee County	32,538	32,674	32,630	32,675	33,485	32,821	0.9%	-2.0%
45075	Orangeburg County	26,741	27,243	28,163	28,570	29,424	28,969	8.3%	-1.5%
45077	Pickens County	27,542	27,256	27,877	28,186	28,199	28,463	3.3%	0.9%
45079	Richland County	33,360	33,546	34,205	34,572	35,038	35,284	5.8%	0.7%
45081	Saluda County	23,158	23,659	23,183	23,460	24,535	24,578	6.1%	0.2%
45083	Spartanburg County	34,273	34,769	35,471	35,110	35,787	35,301	3.0%	-1.4%
45085	Sumter County	27,840	27,879	28,962	29,257	29,696	29,452	5.8%	-0.8%
45087	Union County	26,403	26,568	26,823	27,061	27,211	27,042	2.4%	-0.6%
45089	Williamsburg County	25,705	25,846	26,229	26,220	26,604	26,672	3.8%	0.3%
45091	York County	32,254	32,912	32,597	32,137	33,019	33,596	4.2%	1.7%
	South Carolina	31,429	31,673	32,050	32,198	32,543	32,609	3.8%	0.2%
	United States	39,376	39,239	39,244	39,452	40,106	40,146	2.0%	0.1%

*Dollar estimates adjusted to 2005 dollars

Source: Bureau of Economic Analysis, Regional Economic Information System (REIS): TableCA30
Available at: <http://www.bea.gov/bea/regional/reis/>

Per Capita Personal Income (Constant Dollars*)

FIPS	County	Year						Percent Change	
		2000	2001	2002	2003	2004	2005	2000-2005	2004-2005
45001	Abbeville County	26,047	25,513	23,203	21,212	21,786	22,111	-15.1%	1.5%
45003	Aiken County	28,162	28,853	28,968	28,615	28,457	28,418	0.9%	-0.1%
45005	Allendale County	18,426	18,540	18,045	18,244	18,361	18,871	2.4%	2.8%
45007	Anderson County	27,527	27,563	27,187	26,853	26,921	26,968	-2.0%	0.2%
45009	Bamberg County	19,731	19,607	19,577	19,980	20,741	20,989	6.4%	1.2%
45011	Barnwell County	25,198	20,621	20,497	20,319	20,444	20,409	-19.0%	-0.2%
45013	Beaufort County	36,805	37,819	36,863	36,971	38,790	39,308	6.8%	1.3%
45015	Berkeley County	22,860	23,588	24,814	25,425	26,116	27,040	18.3%	3.5%
45017	Calhoun County	25,209	25,594	25,577	26,566	27,405	28,429	12.8%	3.7%
45019	Charleston County	32,574	32,543	32,407	32,325	33,359	34,158	4.9%	2.4%
45021	Cherokee County	23,037	22,633	22,433	22,513	22,601	22,651	-1.7%	0.2%
45023	Chester County	22,617	22,990	23,584	23,561	24,035	24,814	9.7%	3.2%
45025	Chesterfield County	22,184	22,127	21,740	22,171	22,431	22,286	0.5%	-0.6%
45027	Clarendon County	20,305	20,558	20,244	20,752	21,344	21,266	4.7%	-0.4%
45029	Colleton County	21,666	21,829	21,526	21,586	22,592	22,764	5.1%	0.8%
45031	Darlington County	25,083	25,253	25,117	25,288	25,606	25,745	2.6%	0.5%
45033	Dillon County	20,375	20,446	20,116	20,826	20,851	20,850	2.3%	0.0%
45035	Dorchester County	24,921	25,003	25,541	25,471	26,309	26,207	5.2%	-0.4%
45037	Edgefield County	21,459	22,055	21,807	21,750	23,089	23,157	7.9%	0.3%
45039	Fairfield County	22,739	22,836	22,870	22,613	23,344	23,926	5.2%	2.5%
45041	Florence County	26,988	27,336	27,598	27,584	28,266	28,486	5.6%	0.8%
45043	Georgetown County	27,510	28,440	28,435	28,430	29,350	30,399	10.5%	3.6%
45045	Greenville County	33,668	32,261	31,731	31,335	31,601	31,759	-5.7%	0.5%
45047	Greenwood County	26,189	25,771	25,482	25,153	25,442	25,471	-2.7%	0.1%
45049	Hampton County	21,041	21,176	21,207	20,949	21,182	21,566	2.5%	1.8%
45051	Horry County	27,145	26,643	26,416	26,553	26,887	26,789	-1.3%	-0.4%
45053	Jasper County	20,055	19,984	20,422	21,533	22,750	23,696	18.2%	4.2%
45055	Kershaw County	26,487	27,044	27,466	27,447	28,477	28,595	8.0%	0.4%
45057	Lancaster County	23,353	23,167	22,739	22,533	23,050	23,560	0.9%	2.2%
45059	Laurens County	23,126	23,137	22,664	22,419	23,465	24,043	4.0%	2.5%
45061	Lee County	19,536	19,551	19,030	19,778	19,823	20,307	3.9%	2.4%
45063	Lexington County	32,777	31,585	31,526	31,437	31,562	31,575	-3.7%	0.0%
45065	McCormick County	19,632	19,650	19,296	19,142	20,187	20,299	3.4%	0.6%
45067	Marion County	20,358	20,361	20,507	20,979	20,867	20,485	0.6%	-1.8%
45069	Marlboro County	19,100	19,629	19,164	19,732	19,951	20,643	8.1%	3.5%
45071	Newberry County	23,369	23,556	22,552	22,852	23,871	23,901	2.3%	0.1%
45073	Oconee County	27,340	27,740	27,900	27,888	28,615	28,561	4.5%	-0.2%
45075	Orangeburg County	22,356	22,887	23,307	23,510	23,955	24,002	7.4%	0.2%
45077	Pickens County	23,894	24,540	24,751	24,626	24,392	24,572	2.8%	0.7%
45079	Richland County	30,748	30,456	30,497	30,090	30,844	31,518	2.5%	2.2%
45081	Saluda County	23,807	23,574	23,177	23,896	25,761	25,667	7.8%	-0.4%
45083	Spartanburg County	27,588	27,084	27,318	26,775	26,786	26,656	-3.4%	-0.5%
45085	Sumter County	23,291	22,996	23,603	23,774	24,676	25,042	7.5%	1.5%
45087	Union County	22,886	23,730	23,979	23,794	24,107	24,396	6.6%	1.2%
45089	Williamsburg County	18,230	19,089	18,679	19,532	19,369	20,005	9.7%	3.3%
45091	York County	29,420	29,003	29,635	29,395	29,973	29,904	1.6%	-0.2%
	South Carolina	27,700	27,556	27,542	27,469	28,008	28,285	2.1%	1.0%
	United States	33,846	33,703	33,431	33,398	34,211	34,471	1.8%	0.8%

*Dollar estimates adjusted to 2005 dollars

Source : Bureau of Economic Analysis, Regional Economic Information System (REIS): TableCA1-3
Available at: <http://www.bea.gov/bea/regional/reis/>

Median Household Income (Constant Dollars)

FIPS	County	Year					Percent Change	
		2000	2001	2002	2003	2004	2000-2004	2002-2004
45001	Abbeville County	37,777	34,546	33,919	32,456	32,425	-14.2%	-0.1%
45003	Aiken County	44,133	42,000	41,833	41,777	41,409	-6.2%	-0.9%
45005	Allendale County	25,120	23,267	22,501	22,296	22,256	-11.4%	-0.2%
45007	Anderson County	43,065	41,112	40,390	40,710	39,977	-7.2%	-1.8%
45009	Bamberg County	28,443	26,516	26,380	26,387	26,517	-6.8%	0.5%
45011	Barnwell County	33,363	31,422	29,970	28,230	28,115	-15.7%	-0.4%
45013	Beaufort County	52,722	50,142	49,745	49,535	50,223	-4.7%	1.4%
45015	Berkeley County	45,716	43,532	43,599	44,641	45,020	-1.5%	0.8%
45017	Calhoun County	37,361	35,480	35,007	35,857	35,976	-3.7%	0.3%
45019	Charleston County	45,156	42,578	41,750	41,734	41,316	-8.5%	-1.0%
45021	Cherokee County	39,222	36,722	36,077	36,453	36,572	-6.8%	0.3%
45023	Chester County	36,902	34,940	34,430	35,099	35,282	-4.4%	0.5%
45025	Chesterfield County	34,256	32,418	32,031	32,390	31,924	-6.8%	-1.4%
45027	Clarendon County	30,983	28,967	28,113	28,409	28,422	-8.3%	0.0%
45029	Colleton County	33,761	31,827	31,395	31,588	31,774	-5.9%	0.6%
45031	Darlington County	35,577	33,853	33,411	33,342	33,066	-7.1%	-0.8%
45033	Dillon County	30,138	28,487	27,739	28,452	28,234	-6.3%	-0.8%
45035	Dorchester County	48,492	46,407	46,557	47,301	48,721	0.5%	3.0%
45037	Edgefield County	39,070	37,536	37,233	36,665	37,229	-4.7%	1.5%
45039	Fairfield County	34,506	32,555	32,525	32,824	32,496	-5.8%	-1.0%
45041	Florence County	39,444	37,525	36,920	37,094	37,049	-6.1%	-0.1%
45043	Georgetown County	41,278	38,281	38,005	38,713	38,956	-5.6%	0.6%
45045	Greenville County	48,251	46,312	45,224	44,665	43,877	-9.1%	-1.8%
45047	Greenwood County	40,227	37,884	37,029	36,791	37,135	-7.7%	0.9%
45049	Hampton County	32,998	30,797	30,017	30,021	30,107	-8.8%	0.3%
45051	Horry County	41,189	38,512	37,620	37,818	38,106	-7.5%	0.8%
45053	Jasper County	33,149	30,778	29,438	30,386	30,724	-7.3%	1.1%
45055	Kershaw County	44,316	42,438	42,382	42,805	42,639	-3.8%	-0.4%
45057	Lancaster County	39,672	37,312	36,583	36,437	37,080	-6.5%	1.8%
45059	Laurens County	37,730	35,965	35,087	34,543	34,279	-9.1%	-0.8%
45061	Lee County	30,110	28,135	27,296	27,666	27,582	-8.4%	-0.3%
45063	Lexington County	51,968	49,787	49,004	48,616	48,093	-7.5%	-1.1%
45065	McCormick County	35,711	32,765	32,356	32,313	32,544	-8.9%	0.7%
45067	Marion County	29,945	27,910	27,149	27,895	27,494	-8.2%	
45069	Marlboro County	30,504	28,652	28,218	28,624	28,252	-7.4%	-1.3%
45071	Newberry County	37,820	35,619	34,990	35,250	35,069	-7.3%	-0.5%
45073	Oconee County	42,806	40,466	40,072	40,595	40,750	-4.8%	0.4%
45075	Orangeburg County	33,956	31,791	31,074	31,245	30,953	-8.8%	-0.9%
45077	Pickens County	42,661	40,649	40,226	40,212	39,493	-7.4%	-1.8%
45079	Richland County	46,499	44,148	42,976	42,256	41,381	-11.0%	-2.1%
45081	Saluda County	38,660	35,684	34,005	33,568	35,949	-7.0%	7.1%
45083	Spartanburg County	43,796	41,055	40,267	40,516	40,839	-6.8%	0.8%
45085	Sumter County	37,751	35,496	34,683	34,881	35,005	-7.3%	0.4%
45087	Union County	36,123	34,008	33,438	33,493	33,217	-8.0%	-0.8%
45089	Williamsburg County	28,103	26,473	25,781	26,292	26,132	-7.0%	-0.6%
45091	York County	50,753	48,543	48,439	48,504	48,955	-3.5%	0.9%
	South Carolina	42,284	40,751	40,647	40,337	40,791	-3.5%	1.1%
	United States	47,623	46,568	46,039	45,978	45,836	-3.8%	-0.3%

*Dollar estimates adjusted to 2005 dollars

Source : U.S. Census Bureau, Small Area Income and Poverty Estimates.
Available at: <http://www.census.gov/hhes/www/saipa/tables.html>

Transfer Payments* (x\$1,000)

FIPS	County	Year						Percent Change	
		2000	2001	2002	2003	2004	2005	2000-2004	2004-2005
45001	Abbeville County	166,173	185,121	159,635	124,439	131,086	132,479	-20.3%	1.1%
45003	Aiken County	599,337	645,777	695,783	713,296	757,900	782,778	30.6%	3.3%
45005	Allendale County	58,164	60,585	64,559	65,494	68,628	67,986	16.9%	-0.9%
45007	Anderson County	679,722	739,116	801,798	817,171	862,255	892,104	31.2%	3.5%
45009	Bamberg County	86,972	92,842	98,076	97,600	101,748	103,408	18.9%	1.6%
45011	Barnwell County	113,914	120,639	127,162	128,978	132,763	133,476	17.2%	0.5%
45013	Beaufort County	482,618	525,606	571,599	602,510	639,811	681,551	41.2%	6.5%
45015	Berkeley County	422,390	466,373	513,059	531,999	569,953	587,576	39.1%	3.1%
45017	Calhoun County	59,637	63,897	68,998	71,549	76,148	77,618	30.2%	1.9%
45019	Charleston County	1,233,736	1,317,660	1,409,629	1,436,830	1,513,694	1,545,550	25.3%	2.1%
45021	Cherokee County	211,684	230,126	249,444	255,482	269,448	278,891	31.7%	3.5%
45023	Chester County	156,220	168,149	182,818	185,144	194,199	197,106	26.2%	1.5%
45025	Chesterfield County	196,594	207,906	220,461	226,589	239,364	242,657	23.4%	1.4%
45027	Clarendon County	163,032	175,251	189,443	194,838	206,282	210,715	29.2%	2.1%
45029	Colleton County	192,812	204,873	220,300	226,639	239,218	241,287	25.1%	0.9%
45031	Darlington County	320,226	342,677	364,062	368,848	383,339	392,910	22.7%	2.5%
45033	Dillon County	162,920	171,524	178,102	181,070	189,089	193,752	18.9%	2.5%
45035	Dorchester County	340,374	372,790	406,092	417,841	462,392	495,806	45.7%	7.2%
45037	Edgefield County	82,029	86,311	90,088	92,997	98,738	102,039	24.4%	3.3%
45039	Fairfield County	108,622	117,880	125,716	129,178	134,392	137,600	26.7%	2.4%
45041	Florence County	605,838	650,353	697,469	711,479	764,956	791,202	30.6%	3.4%
45043	Georgetown County	308,376	339,705	367,729	382,305	404,917	423,282	37.3%	4.5%
45045	Greenville County	1,377,470	1,485,264	1,606,676	1,641,696	1,756,054	1,812,523	31.6%	3.2%
45047	Greenwood County	279,464	301,499	327,847	332,967	348,848	357,641	28.0%	2.5%
45049	Hampton County	102,197	107,866	116,505	119,128	124,417	125,368	22.7%	0.8%
45051	Horry County	834,936	914,419	995,051	1,037,066	1,123,778	1,195,530	43.2%	6.4%
45053	Jasper County	69,768	76,436	82,510	87,119	96,887	98,572	41.3%	1.7%
45055	Kershaw County	210,149	227,328	244,636	251,534	271,706	281,793	34.1%	3.7%
45057	Lancaster County	249,562	274,478	299,691	310,701	325,686	332,760	33.3%	2.2%
45059	Laurens County	314,388	341,440	367,945	370,325	400,073	407,456	29.6%	1.8%
45061	Lee County	98,444	105,075	111,563	113,603	121,396	125,315	27.3%	3.2%
45063	Lexington County	696,999	758,098	824,380	854,894	919,921	955,932	37.1%	3.9%
45065	McCormick County	50,907	55,047	58,759	58,894	61,329	64,132	26.0%	4.6%
45067	Marion County	196,411	209,963	220,971	226,903	233,310	232,502		-0.3%
45069	Marlboro County	145,154	153,590	161,196	165,375	172,818	174,568	20.3%	1.0%
45071	Newberry County	161,318	172,519	184,594	187,526	197,444	199,633	23.8%	1.1%
45073	Oconee County	290,179	316,643	346,279	355,768	378,488	395,388	36.3%	4.5%
45075	Orangeburg County	441,132	475,020	505,146	513,710	535,235	548,677	24.4%	2.5%
45077	Pickens County	375,311	411,364	445,231	454,490	487,210	505,083	34.6%	3.7%
45079	Richland County	1,203,298	1,283,944	1,386,451	1,405,556	1,493,962	1,530,782	27.2%	2.5%
45081	Saluda County	72,719	77,797	82,102	82,807	88,379	90,460	24.4%	2.4%
45083	Spartanburg County	1,004,119	1,086,315	1,177,295	1,195,322	1,255,273	1,291,680	28.6%	2.9%
45085	Sumter County	429,242	464,865	501,710	509,470	541,076	556,239	29.6%	2.8%
45087	Union County	152,474	164,970	178,346	179,068	187,203	188,318	23.5%	0.6%
45089	Williamsburg County	190,589	201,052	212,569	213,958	220,510	220,806	15.9%	0.1%
45091	York County	566,166	617,348	682,630	708,041	747,737	780,343	37.8%	4.4%
	South Carolina	16,263,782	17,567,500	18,922,104	19,338,196	20,529,061	21,183,274	30.2%	3.2%
	United States	1,154,681,195	1,232,030,917	1,324,385,860	1,364,978,235	1,411,726,412	1,446,244,000	25.3%	2.4%

*Dollar estimates are adjusted to 2005 dollar values

Source : Bureau of Economic Analysis, Regional Economic Information System (REIS): TableCA35
Available at: <http://www.bea.gov/bea/regional/reis/>

Poverty Rate

FIPS	County	Year					Rate Change	
		2000	2001	2002	2003	2004	2000-2004	2003-2004
45001	Abbeville County	12.1%	13.5%	13.7%	13.6%	15.1%	3.0	1.5
45003	Aiken County	12.1%	12.8%	13.1%	13.5%	14.5%	2.4	1.0
45005	Allendale County	28.8%	31.2%	31.3%	28.7%	32.1%	3.3	3.4
45007	Anderson County	10.5%	11.7%	12.2%	11.9%	13.6%	3.1	1.7
45009	Bamberg County	21.2%	22.1%	22.0%	21.2%	23.1%	1.9	1.9
45011	Barnwell County	17.5%	18.3%	17.6%	17.2%	19.2%	1.7	2.0
45013	Beaufort County	10.3%	11.6%	11.3%	11.0%	11.4%	1.1	0.4
45015	Berkeley County	11.3%	11.8%	11.9%	11.7%	12.7%	1.4	1.0
45017	Calhoun County	15.1%	16.2%	14.9%	14.3%	15.8%	0.7	1.5
45019	Charleston County	13.7%	14.6%	14.5%	14.1%	15.0%	1.3	0.9
45021	Cherokee County	12.9%	14.5%	15.2%	14.9%	16.4%	3.5	1.5
45023	Chester County	14.2%	15.2%	15.6%	15.6%	16.5%	2.3	0.9
45025	Chesterfield County	16.4%	17.0%	17.3%	17.2%	19.3%	2.9	2.1
45027	Clarendon County	20.6%	22.2%	22.9%	21.3%	23.2%	2.6	1.9
45029	Colleton County	19.3%	20.4%	19.9%	18.6%	20.0%	0.7	1.4
45031	Darlington County	17.9%	18.2%	18.4%	18.3%	19.9%	2.0	1.6
45033	Dillon County	21.9%	22.6%	21.6%	20.5%	22.2%	0.3	1.7
45035	Dorchester County	10.1%	10.9%	10.8%	11.2%	11.8%	1.7	0.6
45037	Edgefield County	15.7%	16.7%	16.6%	15.8%	17.2%	1.5	1.4
45039	Fairfield County	15.8%	17.0%	16.2%	16.0%	17.8%	2.0	1.8
45041	Florence County	15.9%	16.7%	16.6%	16.4%	17.8%	1.9	1.4
45043	Georgetown County	14.8%	15.4%	15.3%	14.8%	16.2%	1.4	1.4
45045	Greenville County	9.8%	10.7%	11.5%	12.0%	13.0%	3.2	1.0
45047	Greenwood County	12.5%	13.6%	14.0%	14.0%	15.1%	2.6	1.1
45049	Hampton County	20.0%	21.5%	21.6%	19.4%	21.6%	1.6	2.2
45051	Horry County	12.6%	14.3%	13.8%	13.1%	13.9%	1.3	0.8
45053	Jasper County	22.2%	27.8%	28.9%	19.8%	21.6%	-0.6	1.8
45055	Kershaw County	10.9%	11.6%	11.5%	12.1%	13.3%	2.4	1.2
45057	Lancaster County	12.9%	13.5%	13.8%	13.7%	14.9%	2.0	1.2
45059	Laurens County	13.2%	15.0%	15.7%	14.8%	16.3%	3.1	1.5
45061	Lee County	22.7%	24.4%	24.0%	20.7%	22.7%	0.0	2.0
45063	Lexington County	9.0%	9.8%	10.2%	10.5%	11.3%	2.3	0.8
45065	McCormick County	16.5%	18.0%	17.3%	16.2%	18.0%	1.5	1.8
45067	Marion County	21.5%	23.3%	22.4%	20.6%	22.5%	1.0	
45069	Marlboro County	20.0%	21.0%	20.5%	20.2%	22.0%	2.0	1.8
45071	Newberry County	13.5%	14.6%	14.6%	14.6%	16.3%	2.8	1.7
45073	Oconee County	10.1%	11.2%	11.7%	11.7%	12.7%	2.6	1.0
45075	Orangeburg County	19.3%	20.7%	20.8%	19.9%	21.6%	2.3	1.7
45077	Pickens County	10.2%	11.6%	11.9%	11.5%	13.7%	3.5	2.2
45079	Richland County	11.9%	12.9%	13.4%	13.9%	15.1%	3.2	1.2
45081	Saluda County	15.2%	18.2%	17.6%	15.2%	15.7%	0.5	0.5
45083	Spartanburg County	11.0%	12.2%	12.7%	12.8%	13.5%	2.5	0.7
45085	Sumter County	15.2%	16.3%	16.5%	16.3%	17.7%	2.5	1.4
45087	Union County	12.8%	13.7%	14.1%	14.3%	16.0%	3.2	1.7
45089	Williamsburg County	24.0%	24.6%	24.0%	23.0%	25.8%	1.8	2.8
45091	York County	9.1%	10.0%	10.7%	11.3%	12.0%	2.9	0.7
	South Carolina	12.8%	13.8%	14.0%	13.8%	15.0%	2.2	1.2
	United States	11.3%	11.7%	12.1%	12.5%	12.7%	1.4	0.2

Source : U.S. Census Bureau, Small Area Income and Poverty Estimates.
Available at: <http://www.census.gov/hhes/www/saипе/tables.html>

Patents* per 10,000 Employees

FIPS	County	Year						Percent Change	
		2000	2001	2002	2003	2004	2005	2006	
45001	Abbeville County	1.6	0.0	1.9	0.0	1.9	0.0	0.0	
45003	Aiken County	3.9	4.7	3.7	3.7	1.8	1.7	2.3	
45005	Allendale County	0.0	0.0	0.0	4.6	0.0	0.0	0.0	
45007	Anderson County	5.3	6.4	5.8	6.5	5.6	5.2	7.0	
45009	Bamberg County	0.0	8.2	0.0	5.2	5.3	0.0	0.0	
45011	Barnwell County	0.0	0.0	0.0	1.7	0.0	0.0	0.0	
45013	Beaufort County	4.4	2.6	3.2	2.1	3.0	3.1	3.4	
45015	Berkeley County	2.4	2.3	3.0	0.8	4.0	0.7	1.0	
45017	Calhoun County	0.0	0.0	0.0	0.0	0.0	0.0	3.0	
45019	Charleston County	4.7	3.6	5.0	3.6	3.1	3.1	2.3	
45021	Cherokee County	1.1	0.0	0.6	1.8	0.6	0.0	1.8	
45023	Chester County	2.0	2.1	0.0	0.0	1.2	0.0	1.1	
45025	Chesterfield County	2.9	1.5	0.0	0.0	2.5	0.0	1.7	
45027	Clarendon County	0.0	1.8	1.8	0.0	1.8	0.0	1.8	
45029	Colleton County	2.4	1.2	1.2	3.7	1.2	1.2	0.0	
45031	Darlington County	4.2	4.3	6.5	6.1	8.4	1.7	8.4	
45033	Dillon County	0.0	0.0	0.0	0.0	1.3	2.5	0.0	
45035	Dorchester County	4.3	3.6	5.6	3.4	5.0	2.8	4.8	
45037	Edgefield County	2.1	2.1	4.1	0.0	2.0	2.1	2.3	
45039	Fairfield County	1.7	0.0	0.0	0.0	0.0	0.0	4.5	
45041	Florence County	6.7	4.4	4.3	3.2	4.4	4.6	6.6	
45043	Georgetown County	2.3	2.3	2.3	2.4	0.0	2.7	1.6	
45045	Greenville County	5.0	6.9	7.1	6.3	5.9	5.9	7.8	
45047	Greenwood County	2.3	0.4	1.3	2.1	1.7	1.3	2.2	
45049	Hampton County	2.1	4.6	0.0	2.6	5.3	2.7	2.7	
45051	Horry County	0.2	0.9	1.5	1.2	1.2	1.1	1.2	
45053	Jasper County	0.0	0.0	0.0	2.5	0.0	0.0	0.0	
45055	Kershaw County	3.4	2.1	3.5	0.7	2.0	2.8	0.7	
45057	Lancaster County	0.6	1.3	1.3	2.8	2.8	0.0	0.0	
45059	Laurens County	0.6	1.3	1.4	0.0	1.5	0.0	2.8	
45061	Lee County	3.9	0.0	0.0	0.0	0.0	0.0	0.0	
45063	Lexington County	4.5	4.6	2.5	3.0	3.9	1.6	2.2	
45065	McCormick County	0.0	8.9	0.0	0.0	0.0	0.0	9.2	
45067	Marion County	0.0	0.0	0.0	0.0	0.0	0.0	0.0	
45069	Marlboro County	1.6	0.0	0.0	1.6	0.0	0.0	0.0	
45071	Newberry County	1.8	1.9	4.8	0.9	0.0	0.0	0.9	
45073	Oconee County	6.4	7.9	7.2	7.4	7.1	4.8	5.6	
45075	Orangeburg County	2.9	0.0	1.1	3.6	1.2	2.0	0.8	
45077	Pickens County	8.9	12.2	13.8	14.9	10.6	8.2	10.4	
45079	Richland County	2.2	2.8	2.2	2.6	2.2	2.0	2.7	
45081	Saluda County	0.0	0.0	7.9	8.1	2.9	0.0	0.0	
45083	Spartanburg County	5.7	7.2	8.7	10.0	7.8	7.9	8.4	
45085	Sumter County	0.3	0.9	0.3	1.6	0.3	1.9	0.6	
45087	Union County	1.3	1.3	1.4	1.5	0.0	0.0	1.8	
45089	Williamsburg County	0.0	0.0	1.4	0.0	1.4	0.0	2.8	
45091	York County	5.1	5.0	6.9	4.9	4.3	3.7	4.7	
	South Carolina	3.5	3.8	4.1	3.9	3.5	3.1	3.8	
	United States	7.7	8.0	8.1	8.2	7.8	6.7	8.0	

*Number of U.S. utility patents issued to South Carolina inventors. Origin of the patent is determined by county of residence of the first-named inventor.

Source : United States Patent and Trademark Office, Patent Electronic Business Center
Available at: <http://www.uspto.gov/patft/index.html>

Patents per County*

FIPS	County	Year						Percent Change
		2000	2001	2002	2003	2004	2005	2006
45001	Abbeville County	1	0	1	0	1	0	0
45003	Aiken County	19	23	18	18	9	8	11
45005	Allendale County	0	0	0	1	0	0	0
45007	Anderson County	28	33	29	31	27	25	34
45009	Bamberg County	0	3	0	2	2	0	0
45011	Barnwell County	0	0	0	1	0	0	0
45013	Beaufort County	20	12	15	10	15	16	18
45015	Berkeley County	6	6	8	2	11	2	3
45017	Calhoun County	0	0	0	0	0	0	1
45019	Charleston County	68	52	72	53	48	49	37
45021	Cherokee County	2	0	1	3	1	0	3
45023	Chester County	2	2	0	0	1	0	1
45025	Chesterfield County	4	2	0	0	3	0	2
45027	Clarendon County	0	1	1	0	1	0	1
45029	Colleton County	2	1	1	3	1	1	0
45031	Darlington County	8	8	12	11	15	3	15
45033	Dillon County	0	0	0	0	1	2	0
45035	Dorchester County	9	8	13	8	12	7	12
45037	Edgefield County	1	1	2	0	1	1	1
45039	Fairfield County	1	0	0	0	0	0	2
45041	Florence County	34	22	22	16	22	22	32
45043	Georgetown County	4	4	4	4	0	5	3
45045	Greenville County	104	139	139	124	116	119	159
45047	Greenwood County	6	1	3	5	4	3	5
45049	Hampton County	1	2	0	1	2	1	1
45051	Horry County	2	8	13	11	11	11	12
45053	Jasper County	0	0	0	1	0	0	0
45055	Kershaw County	5	3	5	1	3	4	1
45057	Lancaster County	1	2	2	4	4	0	0
45059	Laurens County	1	2	2	0	2	0	4
45061	Lee County	1	0	0	0	0	0	0
45063	Lexington County	31	31	17	21	28	12	17
45065	McCormick County	0	1	0	0	0	0	1
45067	Marion County	0	0	0	0	0	0	0
45069	Marlboro County	1	0	0	1	0	0	0
45071	Newberry County	2	2	5	1	0	0	1
45073	Oconee County	14	17	15	15	14	9	10
45075	Orangeburg County	8	0	3	9	3	5	2
45077	Pickens County	26	34	37	40	28	22	29
45079	Richland County	33	42	33	39	34	30	42
45081	Saluda County	0	0	3	3	1	0	0
45083	Spartanburg County	59	73	86	99	76	77	83
45085	Sumter County	1	3	1	5	1	6	2
45087	Union County	1	1	1	1	0	0	1
45089	Williamsburg County	0	0	1	0	1	0	2
45091	York County	26	25	35	26	24	21	28
	South Carolina	532	565	600	570	523	462	577
	United States	85,068	87,600	86,971	87,893	84,271	74,637	89,823

*Number of U.S. utility patents issued to South Carolina inventors. Origin of the patent is determined by county of residence of the first-named inventor.

Source : United States Patent and Trademark Office, Patent Electronic Business Center
Available at: <http://www.uspto.gov/patft/index.html>

SBIR and STTR Total Phase I and II Dollar* Awards

FIPS	County	Year						
		2000	2001	2002	2003	2004	2005	2006
45001	Abbeville County	\$0	\$0	\$0	\$0	\$0	\$0	No Data Available
45003	Aiken County	\$79,293	\$0	\$0	\$105,984	\$0	\$0	No Data Available
45005	Allendale County	\$0	\$0	\$0	\$0	\$0	\$0	No Data Available
45007	Anderson County	\$113,403	\$220,553	\$1,426,922	\$0	\$854,030	\$569,993	No Data Available
45009	Bamberg County	\$0	\$0	\$0	\$0	\$0	\$0	No Data Available
45011	Barnwell County	\$0	\$0	\$0	\$0	\$0	\$0	No Data Available
45013	Beaufort County	\$807,314	\$3,458,853	\$151,598	\$955,142	\$1,284,714	\$584,999	No Data Available
45015	Berkeley County	\$0	\$0	\$0	\$0	\$0	\$0	No Data Available
45017	Calhoun County	\$0	\$0	\$0	\$0	\$0	\$0	No Data Available
45019	Charleston County	\$2,103,528	\$826,627	\$4,447,892	\$1,384,584	\$1,262,472	\$4,985,811	No Data Available
45021	Cherokee County	\$0	\$0	\$0	\$0	\$0	\$0	No Data Available
45023	Chester County	\$0	\$0	\$0	\$0	\$0	\$0	No Data Available
45025	Chesterfield County	\$0	\$0	\$0	\$0	\$0	\$0	No Data Available
45027	Clarendon County	\$0	\$0	\$0	\$0	\$0	\$0	No Data Available
45029	Colleton County	\$0	\$0	\$0	\$0	\$0	\$0	No Data Available
45031	Darlington County	\$0	\$0	\$0	\$0	\$0	\$0	No Data Available
45033	Dillon County	\$0	\$0	\$0	\$0	\$0	\$0	No Data Available
45035	Dorchester County	\$0	\$0	\$0	\$0	\$0	\$0	No Data Available
45037	Edgefield County	\$0	\$110,249	\$542,799	\$0	\$0	\$99,622	No Data Available
45039	Fairfield County	\$0	\$0	\$0	\$0	\$0	\$0	No Data Available
45041	Florence County	\$0	\$103,379	\$0	\$0	\$0	\$0	No Data Available
45043	Georgetown County	\$0	\$0	\$103,200	\$0	\$0	\$0	No Data Available
45045	Greenville County	\$0	\$0	\$0	\$0	\$0	\$0	No Data Available
45047	Greenwood County	\$0	\$191,220	\$0	\$983,537	\$192,039	\$0	No Data Available
45049	Hampton County	\$0	\$0	\$0	\$0	\$0	\$0	No Data Available
45051	Horry County	\$0	\$0	\$0	\$0	\$0	\$0	No Data Available
45053	Jasper County	\$68,729	\$0	\$0	\$0	\$0	\$0	No Data Available
45055	Kershaw County	\$0	\$0	\$0	\$0	\$103,388	\$750,000	No Data Available
45057	Lancaster County	\$0	\$0	\$0	\$0	\$0	\$0	No Data Available
45059	Laurens County	\$0	\$0	\$0	\$0	\$0	\$0	No Data Available
45061	Lee County	\$0	\$0	\$0	\$0	\$0	\$0	No Data Available
45063	Lexington County	\$260,854	\$1,323,320	\$0	\$0	\$0	\$0	No Data Available
45065	McCormick County	\$0	\$0	\$0	\$0	\$0	\$0	No Data Available
45067	Marion County	\$0	\$0	\$0	\$0	\$0	\$0	No Data Available
45069	Marlboro County	\$0	\$0	\$0	\$0	\$0	\$0	No Data Available
45071	Newberry County	\$0	\$0	\$0	\$0	\$0	\$0	No Data Available
45073	Oconee County	\$453,536	\$0	\$0	\$0	\$0	\$0	No Data Available
45075	Orangeburg County	\$0	\$0	\$0	\$0	\$0	\$0	No Data Available
45077	Pickens County	\$0	\$0	\$0	\$212,134	\$516,923	\$0	No Data Available
45079	Richland County	\$623,780	\$712,120	\$2,129,007	\$5,416,367	\$4,389,367	\$4,213,057	No Data Available
45081	Saluda County	\$0	\$0	\$0	\$0	\$0	\$0	No Data Available
45083	Spartanburg County	\$0	\$0	\$0	\$0	\$0	\$0	No Data Available
45085	Sumter County	\$0	\$0	\$0	\$0	\$0	\$0	No Data Available
45087	Union County	\$0	\$0	\$0	\$0	\$0	\$0	No Data Available
45089	Williamsburg County	\$0	\$0	\$0	\$0	\$0	\$0	No Data Available
45091	York County	\$0	\$0	\$0	\$106,094	\$71,946	\$509,807	No Data Available
	South Carolina	\$4,510,438	\$7,056,572	\$8,801,418	\$9,163,842	\$8,674,879	\$11,713,289	No Data Available
	United States	\$1,257,527,341	\$1,347,688,392	\$1,727,713,504	\$1,975,343,060	\$2,298,627,590	\$2,085,560,074	No Data Available

*Dollar estimates adjusted to 2005 dollars

Source : U.S. Small Business Administration, Technology Resources Network
Available at: http://tech-net.sba.gov/tech-net/public/dsp_search.cfm

SBIR and STTR Phase I and II Dollar* Awards per 1,000 Employees

FIPS	County	Year						
		2000	2001	2002	2003	2004	2005	
45001	Abbeville County	\$0	\$0	\$0	\$0	\$0	\$0	No Data Available
45003	Aiken County	\$1,618	\$0	\$0	\$2,161	\$0	\$0	No Data Available
45005	Allendale County	\$0	\$0	\$0	\$0	\$0	\$0	No Data Available
45007	Anderson County	\$2,143	\$4,276	\$28,393	\$0	\$17,599	\$11,858	No Data Available
45009	Bamberg County	\$0	\$0	\$0	\$0	\$0	\$0	No Data Available
45011	Barnwell County	\$0	\$0	\$0	\$0	\$0	\$0	No Data Available
45013	Beaufort County	\$17,847	\$75,867	\$3,240	\$19,735	\$25,639	\$11,280	No Data Available
45015	Berkeley County	\$0	\$0	\$0	\$0	\$0	\$0	No Data Available
45017	Calhoun County	\$0	\$0	\$0	\$0	\$0	\$0	No Data Available
45019	Charleston County	\$14,463	\$5,744	\$30,656	\$9,298	\$8,187	\$31,447	No Data Available
45021	Cherokee County	\$0	\$0	\$0	\$0	\$0	\$0	No Data Available
45023	Chester County	\$0	\$0	\$0	\$0	\$0	\$0	No Data Available
45025	Chesterfield County	\$0	\$0	\$0	\$0	\$0	\$0	No Data Available
45027	Clarendon County	\$0	\$0	\$0	\$0	\$0	\$0	No Data Available
45029	Colleton County	\$0	\$0	\$0	\$0	\$0	\$0	No Data Available
45031	Darlington County	\$0	\$0	\$0	\$0	\$0	\$0	No Data Available
45033	Dillon County	\$0	\$0	\$0	\$0	\$0	\$0	No Data Available
45035	Dorchester County	\$0	\$0	\$0	\$0	\$0	\$0	No Data Available
45037	Edgefield County	\$0	\$23,412	\$110,415	\$0	\$0	\$21,201	No Data Available
45039	Fairfield County	\$0	\$0	\$0	\$0	\$0	\$0	No Data Available
45041	Florence County	\$0	\$2,045	\$0	\$0	\$0	\$0	No Data Available
45043	Georgetown County	\$0	\$0	\$6,024	\$0	\$0	\$0	No Data Available
45045	Greenville County	\$0	\$0	\$0	\$0	\$0	\$0	No Data Available
45047	Greenwood County	\$0	\$7,573	\$0	\$42,096	\$8,191	\$0	No Data Available
45049	Hampton County	\$0	\$0	\$0	\$0	\$0	\$0	No Data Available
45051	Horry County	\$0	\$0	\$0	\$0	\$0	\$0	No Data Available
45053	Jasper County	\$20,061	\$0	\$0	\$0	\$0	\$0	No Data Available
45055	Kershaw County	\$0	\$0	\$0	\$0	\$6,891	\$51,986	No Data Available
45057	Lancaster County	\$0	\$0	\$0	\$0	\$0	\$0	No Data Available
45059	Laurens County	\$0	\$0	\$0	\$0	\$0	\$0	No Data Available
45061	Lee County	\$0	\$0	\$0	\$0	\$0	\$0	No Data Available
45063	Lexington County	\$3,822	\$19,595	\$0	\$0	\$0	\$0	No Data Available
45065	McCormick County	\$0	\$0	\$0	\$0	\$0	\$0	No Data Available
45067	Marion County	\$0	\$0	\$0	\$0	\$0	\$0	No Data Available
45069	Marlboro County	\$0	\$0	\$0	\$0	\$0	\$0	No Data Available
45071	Newberry County	\$0	\$0	\$0	\$0	\$0	\$0	No Data Available
45073	Oconee County	\$20,698	\$0	\$0	\$0	\$0	\$0	No Data Available
45075	Orangeburg County	\$0	\$0	\$0	\$0	\$0	\$0	No Data Available
45077	Pickens County	\$0	\$0	\$0	\$7,924	\$19,483	\$0	No Data Available
45079	Richland County	\$4,190	\$4,693	\$14,100	\$35,753	\$28,542	\$27,689	No Data Available
45081	Saluda County	\$0	\$0	\$0	\$0	\$0	\$0	No Data Available
45083	Spartanburg County	\$0	\$0	\$0	\$0	\$0	\$0	No Data Available
45085	Sumter County	\$0	\$0	\$0	\$0	\$0	\$0	No Data Available
45087	Union County	\$0	\$0	\$0	\$0	\$0	\$0	No Data Available
45089	Williamsburg County	\$0	\$0	\$0	\$0	\$0	\$0	No Data Available
45091	York County	\$0	\$0	\$0	\$2,009	\$1,292	\$8,938	No Data Available
	South Carolina	\$2,992	\$4,777	\$6,050	\$6,301	\$5,875	\$7,805	No Data Available
	United States	\$11,430	\$12,330	\$16,060	\$18,450	\$21,187	\$18,855	No Data Available

*Dollar estimates adjusted to 2005 dollars

Source : U.S. Small Business Administration, Techr
Available at: http://tech-net.sba.gov/tech-net/public/dsp_search.cfm