

CLEMSON UNIVERSITY



SCHOOL OF NURSING
College of Behavioral, Social, and Health Sciences
UNDERGRADUATE HANDBOOK
2025 – 2026

BS-Traditional | BS-Accelerated | Accelerated Second Degree | RNBS

CLEMSON UNIVERSITY
School of Nursing
College of Behavioral, Social and Health Sciences
TABLE OF CONTENTS

SECTION I: THE SCHOOL OF NURSING	6
Welcome to the School of Nursing	6
The School of Nursing Overview.....	6
Accreditation: The Commission on Collegiate Nursing Education (CCNE).....	7
Mission	7
Vision	7
Core Principles/Values	7
Goals	8
Goal 1: Enrich the Student Experience through Excellence in Nursing Education	8
Goal 2: Expand Nursing Science and Interdisciplinary Research	8
Goal 3: Lead Community-Engaged Health Transformation	8
Goal 4: Prepare Nursing Leaders to Shape the Future of Healthcare.....	8
Statement of Equal Opportunity	9
School of Nursing Organizational Chart	10
SECTION II: OBJECTIVES AND CURRICULUM INFORMATION	11
Baccalaureate Program Objectives	11
Nursing Bachelor of Science Program Tracks.....	11
First-Year and Upper-Class Change of Major Students.....	12
Upper-Class Transfer Students	12
B.S. Traditional Track	13
B.S. Accelerated Track.....	14
B.S. First-Year Change of Major Track	15
B.S. Upper-Class Change of Major & Transfer Track	16
B.S. Accelerated Second Degree (ASD) Track.....	17
RNBS Curriculum Information	18
RNBS Prerequisite Courses (TOTAL = 63 Credits)	18
RNBS Required Courses (TOTAL = 35 Credits)	18
RNBS Exemption Credit for NURS Courses	19
RNBS Curriculum Progression - Fall Start**	19
RNBS Curriculum Progression – Spring Start**	19
Potential Graduate Courses for RNBS Students*	20
RNBS Transfer Credit Evaluation.....	20
RNBS Residency Requirement	20
RNBS Clinical Course Requirement.....	20
RNBS Independent Study Guidelines (NURS 4990).....	20
RNBS Special Topics Course (NURS 3000).....	21

RNBS Summer Semester	21
Bachelor of Science in Nursing Course Descriptions	22
Departmental Honors Program	25
Essential Functions for Nursing Students	26
SECTION III: ADVISING, REGISTRATION, POLICIES, & PROCEDURES	28
School of Nursing Policies Regarding Progression.....	28
Course Space Priority	28
Validation of Prior Coursework.....	28
Student Records and Confidentiality	28
Advising	29
Grading Policies for Undergraduate Nursing Courses.....	29
Anticipated Absences	29
Class Attendance Policy	30
Clinical Absences and Tardiness	30
Communication with Instructors.....	31
Requesting Accommodations.....	31
Guidelines for Expressing Student Concerns	31
Reserve Officers Training Corps (ROTC) Fact Sheet	32
Nursing Students Enrolled in ROTC.....	32
Textbook Policy	32
Academic Integrity Policy.....	33
Artificial Intelligence.....	33
Policies Governing Student Behavior	33
Code of Conduct.....	34
Civility Statement	35
Standards of Professional Practice	36
Recommended Technology Capabilities	37
Distance Education Guidelines	37
Netiquette	38
Helpful Websites	38
Peer to Peer File Sharing.....	38
Computer Policies and Resources for School of Nursing	39
Key Clemson IT Policies for Students	39
Special Considerations for Nursing Students	39
Device Requirements and Support	40
TigerHub: Your IT Support Portal	40
Contact Information	40
Clinical Laboratory Requirements.....	41
Helpful Suggestions for Completing Clinical Laboratory Requirements.....	41
Clemson University School of Nursing IMMUNIZATION & ENROLLMENT REQUIREMENTS	42
Health Protection Policy for Faculty and Students.....	43
Student Policy Governing Use and/or Abuse of Drugs and/or Alcohol.....	44
Drug Policy and Procedure Statement	44
Procedure for Drug Testing.....	44
Refusal	44
Positive Results	45

Reasonable Suspicion of Drug/Alcohol Use.....	45
Readmission.....	46
Clinical Dress Code.....	46
Statement of Unsafe Clinical Practice	47
Guidelines for Evaluation of Student Clinical Performance	47
Transportation to the CU Nursing Building in Greenville	48
Clinical Laboratory Transportation	48
Cancellation of Clinical Labs Due to Hazardous Driving Conditions.....	48
Television Radio	49
Social Media Policy.....	50
Policy for Use of Personal Digital Devices in the Clinical Area	51
Personal Digital Device Infection Control	51
Summary.....	52
Identity Precautions	52
SECTION IV: SCHOOL OF NURSING FACILITIES, RESOURCES, & STUDENT ORGANIZATIONS	53
CBSHS Academic Advising Center	53
Pre-Registration Advising.....	53
Permission to Take Courses away from Clemson University	53
Dropping or Adding Classes	54
Scholarships	54
Communicating with your Advisor	54
Joseph F. Sullivan Center	54
Clinical Learning Resource Center Overview.....	54
Guidelines for Clinical Learning Research Center (CLRC) Use.....	54
Learning Resource Center (LRC).....	55
Hours	55
Clinical Learning Center (CLC) Simulation Laboratory	55
Mission Statement.....	55
Core Values.....	56
Simulation Lab Hours	56
Simulation Lab Consents and Expectations.....	57
Associate Director of Simulation	57
Open Lab Skills Practice.....	57
Sigma Theta Tau, Gamma Mu Chapter	58
South Carolina Student Nurses' Association (SNA) at Clemson University	58
Student Representatives on School Program Committees	59
Student Class Representatives	59
SECTION V: GRADUATION INFORMATION	60
National Council Licensure Examination for Registered Nurses (NCLEX-RN).....	60
Pins for Professional Convocation	60
Program Pin and Cap	60
Clemson University Baccalaureate Cap.....	61
School of Nursing Estimated Expenses.....	61
Approximate Graduating Student Expenses estimates*	61
SECTION VI: STUDENT FORMS	62
Understanding of Alcohol and Drug Policy & Permission for Drug Screening	62

School of Nursing Handbook	62
Nursing Student Acknowledgement of Policies and Expectations	63
Personal Health History.....	64
Essential Functions for Nursing Students	65
Simulation Lab Agreement.....	66
Authorization for Use of Photographic/Image/Video/Voice Recording	67

SECTION I: THE SCHOOL OF NURSING

Welcome to the School of Nursing

Welcome to the School of Nursing. We want you to have a rewarding and satisfying experience with us. This handbook contains information that is vital to your success as a nursing student. It serves as a supplement to the current Undergraduate Announcements. The Undergraduate Announcements is the major source of information about university academic policies and this handbook is the major source of academic policies for the School of Nursing Undergraduate Program. These documents should be referred to whenever you have questions about policies; however, students should review the School of Nursing Undergraduate Handbook at the beginning of each academic year as it is updated annually. The faculty and staff will assume that you are familiar with this information, so please take a few minutes of your valuable time to study both the Announcements and the Handbook. Again, welcome to the School of Nursing and Clemson University, and best wishes in your studies.

The School of Nursing Overview

The School of Nursing is an integral part of Clemson University, a land grant, state supported institution of higher learning. The school is committed to the purposes of the university which are teaching, research and service to the people of South Carolina, the nation and the world. The goal of Clemson University School of Nursing is to prepare nurses for professional practice and leadership, and to advance nursing knowledge.

In a climate of rapid changes in the health care system, nursing is recognized historically and currently as a major health care provider in health promotion, health maintenance and rehabilitation. Nurses have more sustained contact with recipients of health care than any other health care professional. They are often the first responder to health care problems of the public. In addition to being the provider of direct care and the manager of health care by others, nurses are the advocates, teachers, and counselors for health care recipients. Nurses are increasingly involved in complex decisions crucial to the life and safety of patients. They accept greater responsibility for care, which was previously assumed by other disciplines. As a result of these rapid changes in the health care system, the complexity of nursing practice has increased significantly. Thus, a broad and in-depth educational experience is needed to prepare the professional nurse of the future.

The School of Nursing contributes to the improvement of the health and quality of life of South Carolinians through its activities in teaching, research, and service. Dr. John Whitcomb is the Director and Chief Academic Nursing Officer. The Associate Director for the School of Nursing will be announced once hired. Dr. Lucia Gonzales is the Associate Director for Research for the School of Nursing, Dr. Leslie Ravan is the Director of Undergraduate Programs and Dr. Lisa Miller is Director of the Graduate Programs. Mrs. Robin Metler-Atkinson rmetler@clemson.edu is the Student Services Coordinator for the BS-Traditional (BST) cohorts, Mrs. Anna Claire Butler acbutle@clemson.edu is the Student Services Coordinator for the BS-Accelerated (BSA) cohorts, and Mrs. Cynthia Mihalchick mihalch@clemson.edu is the Student Services Coordinator for the Accelerated Second Degree (ASD) and RNBS Cohorts.

The College of Behavioral, Social and Health Sciences is headed by Dr. Leslie Hossfeld, Dean. The College of Behavioral, Social and Health Sciences is comprised of eight degree-granting units, Communication Studies, Political Science, Psychology, Sociology/Anthropology, Nursing, Parks Recreation and Tourism, Public Health Sciences and Youth Family and Community Studies, and multiple non-degree granting units.

Accreditation: The Commission on Collegiate Nursing Education (CCNE)

The baccalaureate degree program in nursing, the master's degree program in nursing and Doctor of Nursing Practice program at Clemson University are accredited by the Commission on Collegiate Nursing Education, 655 K Street, NW, Suite 750, Washington, DC 20001, 202-887-6791.

Mission

The mission of Clemson University School of Nursing, as a preeminent scholarly center of learning and research excellence, is to educate students at the baccalaureate, master's, and doctoral levels to become healthcare professionals who transform lives through research/scholarship, practice, and outreach.

Vision

Clemson University School of Nursing will elevate nursing and healthcare through leadership, research/scholarship, and practice to maximize the health and quality-of-life for the people of South Carolina, the nation, and the global community.

Core Principles/Values

Excellence and Innovation in Education and Research

We strive for academic and scholarly excellence by fostering critical thinking, innovation, and research that advance nursing science and healthcare practices.

Transformative Leadership and Professionalism

We prepare ethical, compassionate leaders who shape the future of healthcare through evidence-based practice, advocacy, and lifelong learning.

Community Engagement and Service

We are committed to improving health outcomes through meaningful outreach, collaboration, and culturally competent care at local, national, and global levels.

Ethics, Integrity, and Accountability

We uphold the principles of ethics, integrity and accountability in all aspects of nursing education, research, and clinical practice.

Goals

Goal 1: Enrich the Student Experience through Excellence in Nursing Education

The School of Nursing will deliver a competency-based, comprehensive educational experience that fosters professional identity, clinical excellence, and personal growth across all degree levels. Through experiential learning, faculty mentorship, and academic support, we will prepare students to thrive in varied healthcare settings.

1.1 Improve student engagement and satisfaction metrics

1.2 Maintain NCLEX and certification pass rates above the state and national averages

1.2 Sustain retention and degree completion rates across programs

AACN Alignment: Domains 1, 9, 10

University Pillar: Student Experience

CBSHS Goal 1: Learn and Thrive

Goal 2: Expand Nursing Science and Interdisciplinary Research

We will cultivate a vibrant research culture that supports faculty and student scholarship, advances nursing knowledge, and contributes to evidence-based practice and health policy reform. Partnerships with interdisciplinary teams will be optimized to address complex health challenges at local, state, and national levels.

2.1 Grow in funded research and scholarly output

2.2 Increase student involvement in research initiatives

2.3 Expand collaborations across academic and healthcare institutions

AACN Alignment: Domains 3, 4, 6

University Pillar: Increase Research

CBSHS Goal 2: Investigate and Innovate

Goal 3: Lead Community-Engaged Health Transformation

The School of Nursing will strengthen its role as a catalyst for health equity and community well-being by designing and leading outreach initiatives that address health disparities, promote prevention, and improve access to care—particularly in underserved and rural areas.

3.1 Sustain community partnerships and outreach programs through engagement in population health

3.2 Address the workforce shortage by preparing skilled nursing professionals through innovative education, experiential learning, and healthcare industry partnerships

3.3 Integrate service-learning and public health experiences into curricula

AACN Alignment: Domains 2, 3, 7, 8

University Pillar: Transforming Lives Statewide and Beyond

CBSHS Goal 3: Build People and Communities

Goal 4: Prepare Nursing Leaders to Shape the Future of Healthcare

We will prepare students to become transformative leaders in healthcare through curricula grounded in ethics, quality improvement, systems thinking, and interprofessional collaboration. Graduates will be equipped to lead change, influence policy, and champion

innovation in nursing practice and education.

4.1 Increase faculty, student, and alumni engagement in leadership and policy roles

4.2 Integrate leadership-focused curriculum at all program levels

4.3 Enhance leadership development through simulation and experiential learning

AACN Alignment: Domains 5, 9, 10

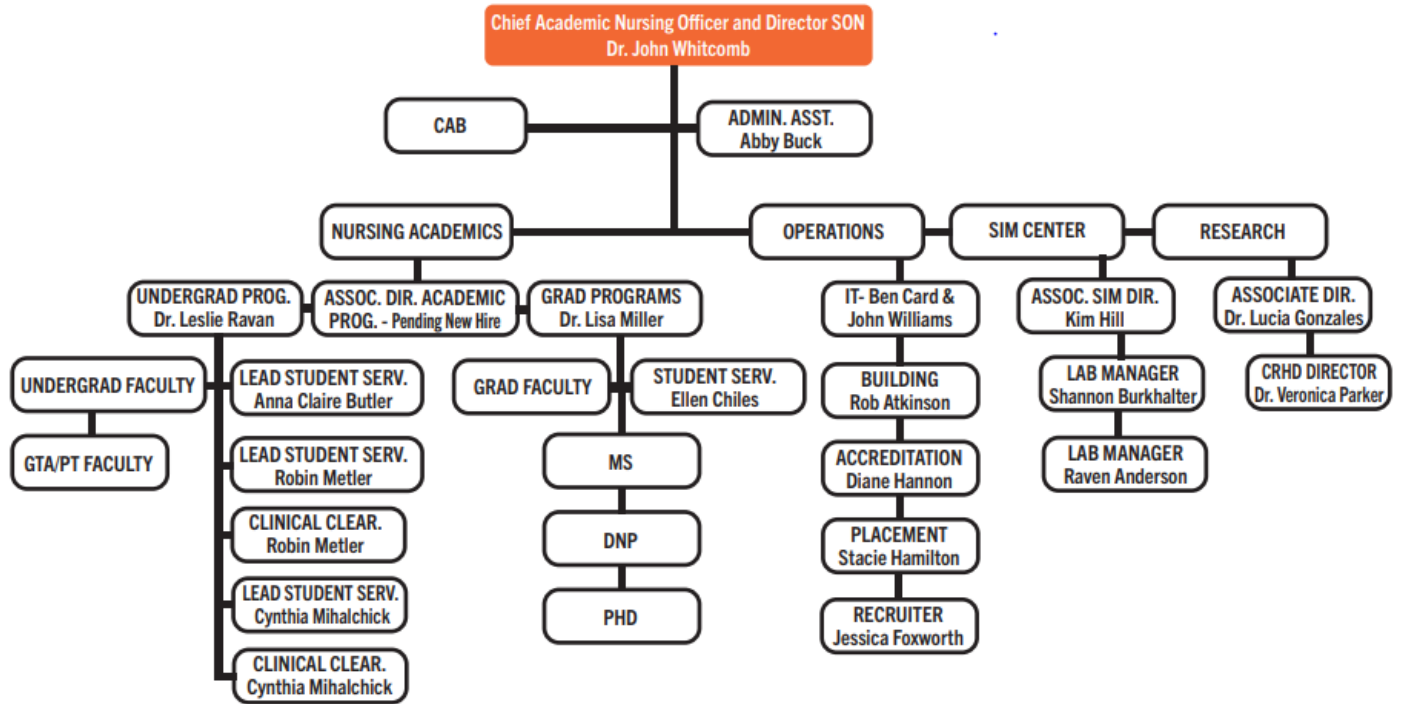
University Pillars: Student Experience, Increase Research, Transforming Lives

CBSHS Goal 3: Build People and Communities

Statement of Equal Opportunity

The School of Nursing follows the University policy in conducting its programs and activities involving admission and treatment of students, employment, teaching, research and public service. *Clemson University does not discriminate against any individual or group of individuals on the basis of age, color, disability, gender, national origin, race, religion, sexual orientation or veteran's status*

School of Nursing Organizational Chart



CAB = Community Advisory Board

CRHD = Center for Research on Health Disparities

SECTION II: OBJECTIVES AND CURRICULUM INFORMATION

Baccalaureate Program Overview

The Bachelor of Science with a major in nursing at Clemson University prepares professional nurses with the knowledge and skills to think critically, communicate effectively, and to practice as nurse generalists. In collaboration and coordination with the interdisciplinary health team, the professional nurse provides nursing care to people of all ages in diverse settings and is accountable for practice. Baccalaureate nursing graduates will be prepared to assume leadership roles in health promotion and prevention and the management of care for individuals and groups. The Baccalaureate nursing program is based on nursing science with support from the biological and behavioral sciences as well as the humanities and serves as a basis for further professional development and graduate study.

Baccalaureate Program Objectives

Expectations of the baccalaureate nursing graduates are expressed in the outcome objectives of the curriculum. These are congruent with the mission, philosophy, organizing framework and professional standards. At the completion of the BS program, the graduate will:

1. Use communication skills to interact effectively and appropriately with individuals, families, groups in the community, and other members of the health care team.
2. Demonstrate personal and professional responsibility and accountability for personal nursing practice in accordance with the highest standards and codes of the profession.
3. Use critical thinking to provide community based professional nursing care for diverse populations across the life span in multiple settings.
4. Employ leadership and management skills and knowledge of health policy to enhance the quality of nursing care.

Nursing Bachelor of Science Program Tracks

- **BS-Traditional Track** students complete the program in four years (eight semesters).
- **BS-Accelerated Track** students complete the program in three and a half years (eight semesters).
- Students accepted via the **First Year Change of Major Track** join the BS-Accelerated Track.
- **Upper-Class Change of Major Track** students from within Clemson and transfer students from other institutions complete the program with five semesters of nursing classes and a fall graduation.
- **BS-Accelerated Second Degree (ASD) Track** students are those students who have previously earned a bachelor's degree in another field.
- The **RNBS Completion Track** is for registered nurses who have previously completed an associate's degree in nursing.

First-Year and Upper-Class Change of Major Students

Students are eligible to apply to change their major to nursing in their freshman and upper-class years at Clemson University if space permits in these cohorts. Students who successfully change their major to nursing during their first year at Clemson should expect to graduate with the BS Accelerated cohort.

Upper-Class Transfer Students

Students who successfully transfer to the nursing program from another institution join the upper-class Change of Major cohort of students to form one nursing cohort that begins each fall semester. Accepted transfer students should expect to take an extra semester to complete the program.

Upper-Class Change of Major/Transfer students follow a parallel nursing plan of study for the freshman and sophomore years, exception to any nursing (NURS) course(s) and NUTR 2050. All NURS courses and NUTR 2050 must be completed at Clemson University. The NURS classes and NUTR 2050 must be taken in sequence as outlined on their respective curricula and may not be moved to other semesters. These tracks are only offered as full-time enrollments.

Clemson University School of Nursing
B.S. Traditional Track
CURRICULUM PLAN 2025-2026

FRESHMAN YEAR

<u>Fall Semester¹</u>		<u>Spring Semester</u>	
*BIOL 1030 General Biology I	3	CH 1010 General Chemistry I	4
*BIOL 1050 General Biology I Lab	1	*ENGL 1030 Accelerated Composition	3
*NURS 1020 Univ Success Skills	2	STAT 2300 Elem. Statistical Inference	3
*COMM 1500 or COMM 2500	3	PSYC 2010 Intro to Psychology	3
Arts and Humanities (Non-Literature) Req ²	3	*NURS 1400 Fostering Innovation in Nursing	3
Social Science Requirement ⁴	3		16
	15		

SOPHOMORE YEAR

<u>Fall Semester</u>		<u>Spring Semester</u>	
*BIOL 2220 Hum Anat and Phys I	4	*BIOL 2230 Human Anat and Phys II	4
*MICR 2050 Intro to Microbiology	4	*NURS 3100 Health Assessment	3
Arts and Humanities (Literature) Req ²	3	*NURS 3200 Professionalism in Nursing	3
*NUTR 2050 Nutrition for Nursing Prof	3	*NURS 3110 Health Promotion	2
Elective	2	Global Challenges Requirement ^{2,3,5}	3
	16	Elective	1
			16

JUNIOR YEAR

<u>Fall Semester*</u>		<u>Spring Semester*</u>	
PCID 3150 Scientific Prof Comm & Info Design		NURS 3030 Med-Surg II: Nurs of Adults	7
or PCID 3140 Technical or PCID 3040 Business	3	NURS 3300 Research in Nurs ^{2,3}	3
NURS 3040 Pathophysiology	3	NURS 3330 Health Care Genetics	3
NURS 3230 Gerontology Nurs	2	NURS 3050 Psychosocial Nurs	3
NURS 3120 Med-Surg I: Found of Nurs	4		16
NURS 3400 Pharmacotherapeutic Nurs	3		
	15		

SENIOR YEAR

<u>Fall Semester*</u>		<u>Spring Semester*</u>	
NURS 4010 Mental Health Nurs	5	NURS 4030 Med-Surg 3: Complex Nurs Adults	5
NURS 4110 Nurs of Children	5	NURS 4150 Community Hlth Nurs	4
NURS 4120 Nurs Women & Fam	5	NURS 4100 Leadership Mgmt. & Nurs Care Pract	6
	15		15

TOTAL HOURS = 124

Footnotes:

¹ Students scoring below the designated score on the CMPT must take an approved math prerequisite for STAT 2300 during this semester.

² See General Education Requirements.

³ All students must fulfill the global challenges requirement to be eligible for graduation. Six credit hours of Clemson approved global challenges courses must be taken. Course transfers from other universities are not eligible. The required Nurs 3300 (Research) fulfills 3 of the 6 credit hours. Student is responsible for choosing and taking another non NURS eligible course to fulfill the remaining 3 credit hours. See global challenges approved courses.

⁴ See approved SC REACH Act courses. All undergraduate students who enter the university during summer 2021 or after must have credit for an approved social science course that also satisfies the SC REACH Act requirement. Students that have already earned credits that satisfy the SC REACH Act requirement may enroll in any approved social science course.

⁵ If this requirement is satisfied by another course in the curriculum, elective hours must be taken to cover the credit hours.

*Classes and semesters with an asterisk cannot be moved to another semester.

Notes:

- A minimum grade of a C is required in the following courses for progression in the nursing major: BIOL 1030/BIOL 1050 or BIOL 1100, BIOL 2220, BIOL 2230, CH 1010, MICR 2050 or MICR 3050, NUTR 2050, STAT 2300, and the approved MATH pre-requisite if required.
- To progress in the nursing curriculum, students may not have received more than 2 final course grades that fulfill nursing degree requirements of less than a C in the last five years. Academic forgiveness counts as an attempt. If a student is not successful in fulfilling degree requirements, they are not eligible to continue in nursing.
- Students may repeat one nursing (NURS) course only. Withdrawing with a W from the course or applying Academic Forgiveness counts as an attempt. Students who fail a second nursing course are not eligible to continue in nursing. A student who receives concurrent D's in Pathophysiology and Pharmacology may be eligible to retake both courses concurrently with prior approval from the School of Nursing.
- Students may not exceed a maximum of two attempts, to successfully complete any NURS course. Students who are not successful on a second attempt are not eligible to continue in nursing.
- A minimum grade of C is required in all NURS nursing courses.
- A minimum grade point ratio of 2.5 is required for registration in each nursing course. Additionally, if the student's nursing GPA drops below a 2.5, the student is not eligible to continue in nursing.

Clemson University School of Nursing
B.S. Accelerated Track
CURRICULUM PLAN 2025-2026

FRESHMAN YEAR

Fall Semester¹

*BIOL 1030 General Biology I	3
*BIOL 1050 General Biology I Lab	1
*NURS 1020 Univ Success Skills	2
*COMM 1500 or COMM 2500	3
Arts and Humanities (Non-Literature) Req ²	3
Social Science Requirement ⁴	3
	15

Spring Semester

CH 1010 General Chemistry I	4
*ENGL 1030 Accelerated Composition	3
STAT 2300 Elem. Statistical Inference	3
PSYC 2010 Intro to Psychology	3
*NURS 1400 Fostering Innovation in Nursing	3
	16

SOPHOMORE YEAR

Fall Semester

*BIOL 2220 Hum Anat and Phys I	4
*MICR 2050 to Microbiology	4
Arts and Humanities (Literature) Req ²	3
*NUTR 2050 Nutrition for Nursing Prof	3
Elective	2
	16

Spring Semester

*BIOL 2230 Human Anat and Phys II	4
*NURS 3100 Health Assessment	3
*NURS 3200 Professionalism in Nursing	3
*NURS 3110 Health Promotion	2
Global Challenges Requirement ^{2,3,5}	3
Elective	1
	16

JUNIOR YEAR

Fall Semester*

PCID 3150 Scientific Prof Comm & Info Design	3
or PCID 3140 Technical or PCID 3040 Business	
NURS 3040 Pathophysiology	3
NURS 3230 Gerontology Nurs	2
NURS 3120 Med-Surg I: Found of Nurs	4
NURS 3400 Pharmacotherapeutic Nurs	3
	15

Spring Semester*

NURS 3030 Med-Surg II: Nurs of Adults	7
NURS 3050 Psychosocial Nurs	3
NURS 3300 Research in Nurs ^{2,3}	3
NURS 3330 Health Care Genetics	3
	16

SENIOR YEAR

Summer Semester*

NURS 4010 Mental Health Nurs	5
NURS 4110 Nurs of Children	5
NURS 4120 Nurs Women & Fam	5
	15

Fall Semester*

NURS 4030 Med-Surg 3: Complex Nurs Adults	5
NURS 4150 Community Hlth Nurs	4
NURS 4100 Leadership Mgmt. & Nurs Care Pract	6
	15

TOTAL HOURS = 124

Footnotes:

¹ Students scoring below the designated score on the CMPT must take an approved math prerequisite for STAT 2300 during this semester.

² See General Education Requirements.

³ All students must fulfill the global challenges requirement to be eligible for graduation. Six credit hours of Clemson approved global challenges courses must be taken. Course transfers from other universities are not eligible. The required Nurs 3300 (Research) fulfills 3 of the 6 credit hours. Student is responsible for choosing and taking another non NURS eligible course to fulfill the remaining 3 credit hours. See global challenges approved courses.

⁴ See approved SC REACH Act courses. All undergraduate students who enter the university during summer 2021 or after must have credit for an approved social science course that also satisfies the SC REACH Act requirement. Students that have already earned credits that satisfy the SC REACH Act requirement may enroll in any approved social science course.

⁵ If this requirement is satisfied by another course in the curriculum, elective hours must be taken to cover the credit hours.

*Classes and semesters with an asterisk cannot be moved to another semester.

Notes:

- A minimum grade of a C is required in the following courses for progression in the nursing major: BIOL 1030/BIOL 1050 or BIOL 1100, BIOL 2220, BIOL 2230, CH 1010, MICR 2050 or MICR 3050, NUTR 2050, STAT 2300, and the approved MATH pre-requisite if required.
- To progress in the nursing curriculum, students may not have received more than 2 final course grades that fulfill nursing degree requirements of less than a C in the last five years. Academic forgiveness counts as an attempt. If a student is not successful in fulfilling degree requirements, they are not eligible to continue in nursing.
- Students may repeat one nursing (NURS) course only. Withdrawing with a W from the course or applying Academic Forgiveness counts as an attempt. Students who fail a second nursing course are not eligible to continue in nursing. A student who receives concurrent D's in Pathophysiology and Pharmacology may be eligible to retake both courses concurrently with prior approval from the School of Nursing.
- Students may not exceed a maximum of two attempts, to successfully complete any NURS course. Students who are not successful on a second attempt are not eligible to continue in nursing.
- A minimum grade of C is required in all NURS nursing courses.
- A minimum grade point ratio of 2.5 is required for registration in each nursing course. Additionally, if the student's nursing GPA drops below a 2.5, the student is not eligible to continue in nursing.

Clemson University School of Nursing
B.S. First-Year Change of Major Track
CURRICULUM PLAN 2025-2026

FRESHMAN YEAR

<u>Fall Semester¹</u>		<u>Spring Semester</u>	
BIOL 1030 General Biology I	3	CH 1010 General Chemistry I	4
BIOL 1050 General Biology I Lab	1	Global Challenges Requirement ^{2, 3, 5}	3
COMM 1500 or COMM 2500	3	STAT 2300 Elem. Statistical Inference	3
Arts and Humanities (Non-Literature) Req ²	3	ENGL 1030 Accelerated Composition	3
Social Science Requirement ⁴	3	PSYC 2010 Intro to Psychology	3
<u>Coursework for alternate path/major</u>	<u>3</u>		<u>16</u>
	16		

SOPHOMORE YEAR

<u>Fall Semester</u>		<u>Spring Semester</u>	
BIOL 2220 Hum Anat and Phys I	4	*BIOL 2230 Human Anat and Phys II	4
MICR 2050 to Microbiology	4	Arts and Humanities (Literature) Req ²	3
NUTR 2050 Nutrition for Nursing Prof	3	*NURS 3100 Health Assessment	3
NUTR 1400 Fostering Innovation in Nursing	3	*NURS 3200 Professionalism in Nursing	3
		*NURS 3110 Health Promotion	2
	14		15

JUNIOR YEAR

<u>Fall Semester</u>		<u>Spring Semester</u>	
PCID 3150 Scientific Prof Comm & Info Design	3	NURS 3030 Med-Surg II: Nurs of Adults	7
or PCID 3140 Technical or PCID 3040 Business		NURS 3050 Psychosocial Nurs	3
NURS 3040 Pathophysiology	3	NURS 3300 Research in Nurs ^{2,3}	3
NURS 3230 Gerontology Nurs	2	NURS 3330 Health Care Genetics	3
NURS 3120 Med-Surg I: Found of Nurs	4		16
NURS 3400 Pharmacotherapeutic Nurs	3		
	15		

SENIOR YEAR

<u>Fall Semester*</u>		<u>Spring Semester*</u>	
NURS 4010 Mental Health Nurs	5	NURS 4030 Med-Surg 3: Complex Nurs Adults	5
NURS 4110 Nurs of Children	5	NURS 4150 Community Hlth Nurs	4
NURS 4120 Nurs Women & Fam	5	NURS 4100 Leadership Mgmt. & Nurs Care Pract	6
	15		15

TOTAL HOURS = 124

Clemson students are eligible to apply to change their major to NURS only if space permits. Space in the first-year change of major cohort is not guarantee

Footnotes

¹ Students scoring below the designated score on the CMPT must take an approved math prerequisite for STAT 2300 during this semester.

² See General Education Requirements.

³ All students must fulfill the global challenges requirement to be eligible for graduation. Six credit hours of Clemson approved global challenges courses must be taken. Course transfers from other universities are not eligible. The required Nurs 3300 (Research) fulfills 3 of the 6 credit hours. Student is responsible for choosing and taking another non NURS eligible course to fulfill the remaining 3 credit hours. See global challenges approved courses.

⁴ See approved SC REACH Act courses. All undergraduate students who enter the university during summer 2021 or after must have credit for an approved social science course that also satisfies the SC REACH Act requirement. Students that have already earned credits that satisfy the SC REACH Act requirement may enroll in any approved social science course.

⁵ If this requirement is satisfied by another course in the curriculum, elective hours must be taken to cover the credit hours.

*Classes and semesters with an asterisk cannot be moved to another semester.

Notes:

- A minimum grade of a C is required in the following courses for progression in the nursing major: BIOL 1030/BIOL 1050 or BIOL 1100, BIOL 2220, BIOL 2230, CH 1010, MICR 2050 or MICR 3050, NUTR 2050, STAT 2300, and the approved MATH pre-requisite if required.
- To progress in the nursing curriculum, students may not have received more than 2 final course grades that fulfill nursing degree requirements of less than a C in the last five years. Academic forgiveness counts as an attempt. If a student is not successful in fulfilling degree requirements, they are not eligible to continue in nursing.
- Students may repeat one nursing (NURS) course only. Withdrawing with a W from the course or applying Academic Forgiveness counts as an attempt. Students who fail a second nursing course are not eligible to continue in nursing. A student who receives concurrent D's in Pathophysiology and Pharmacology may be eligible to retake both courses concurrently with prior approval from the School of Nursing.
- Students may not exceed a maximum of two attempts, to successfully complete any NURS course. Students who are not successful on a second attempt are not eligible to continue in nursing.
- A minimum grade of C is required in all NURS nursing courses.
- A minimum grade point ratio of 2.5 is required for registration in each nursing course. Additionally, if the student's nursing GPA drops below a 2.5, the student is not eligible to continue in nursing.

Clemson University School of Nursing
B.S. Upper-Class Change of Major & Transfer Track
CURRICULUM PLAN 2025-2026

FRESHMAN YEAR

<u>Fall Semester¹</u>		<u>Spring Semester</u>	
BIOL 1030 General Biology I	3	CH 1010 General Chemistry I	4
BIOL 1050 General Biology I Lab	1	ENGL 1030 Accelerated Composition	3
COMM 1500 or COMM 2500	3	STAT 2300 Elem. Statistical Inference	3
Arts and Humanities (Non-Literature) Req ²	3	PSYC 2010 Intro to Psychology	3
Social Science Requirement ⁴	3	Elective (not required for major)	3
Elective	3		16
16			

SOPHOMORE YEAR

<u>Fall Semester</u>		<u>Spring Semester</u>	
*BIOL 2220 Hum Anat and Phys I	4	*BIOL 2230 Human Anat and Phys II	4
*MICR 2050 to Microbiology <i>or</i> MICR 3050 General Microbiology	4	Global Challenges Requirements ^{2,3,5}	3
Arts and Humanities (Literature) Req ²	3	Electives (not required for major)	8
Elective (not required for major)	4		15
15			

JUNIOR YEAR

<u>Fall Semester</u>		<u>Spring Semester</u>	
NURS 3100 Health Assessment	3	NURS 3230 Gerontology Nurs	2
NURS 1400 Fostering Innovation in Nursing	3	NURS 3120 Med-Surg I: Found of Nurs	4
NUTR 2050 Nutrition for Nursing Prof.	3	NURS 3400 Pharmacotherapeutic Nurs	3
NURS 3200 Professionalism in Nursing	3	NURS 3040 Pathophysiology	3
NURS 3110 Health Promotion	2	PCID 3150 Scientific Prof Comm & Info Design <i>or</i>	3
Elective	1	PCID 3140 Technical <i>or</i> PCID 3040 Business	3
15		15	

SENIOR YEAR

<u>Fall Semester*</u>		<u>Spring Semester*</u>	
NURS 3030 Med-Surg II: Nurs of Adults	7	NURS 4010 Mental Health Nurs	5
NURS 3050 Psychosocial Nurs	3	NURS 4110 Nurs of Children	5
NURS 3330 Health Care Genetics	3	NURS 4120 Nurs Women & Fam	5
NURS 3300 Research in Nurs ³	3		15
16			
<u>Fall Semester/Extra Semester*</u>		Total Hours = 124	
NURS 4030 Med-Surg 3: Complex Nurs Adults	5		
NURS 4150 Community Hlth Nurs	4		
NURS 4100 Leadership Mgmt & Nurs Care Pract	3		
15			

Footnotes:

¹ Students scoring below the designated score on the CMPT must take an approved math prerequisite for STAT 2300 during this semester.

² See General Education Requirements.

³ All students must fulfill the global challenges requirement to be eligible for graduation. Six credit hours of Clemson approved global challenges courses must be taken. Course transfers from other universities are not eligible. The required Nurs 3300 (Research) fulfills 3 of the 6 credit hours. Student is responsible for choosing and taking another non NURS eligible course to fulfill the remaining 3 credit hours. See approved Global Challenges Courses.

⁴ See approved SC REACH Act courses. All undergraduate students who enter the university during summer 2021 or after must have credit for an approved social science course that also satisfies the SC REACH Act requirement. Students that have already earned credits that satisfy the SC REACH Act requirement may enroll in any approved social science course.

⁵ If this requirement is satisfied by another course in the curriculum, elective hours must be taken to cover the credit hours.

*Classes and semesters with an asterisk cannot be moved to another semester.

Notes:

- A minimum grade of a C is required in the following courses for progression in the nursing major: BIOL 1030/BIOL 1050 or BIOL 1100, BIOL 2220, BIOL 2230, CH 1010, MICR 2050 or MICR 3050, NUTR 2050, STAT 2300, and the approved MATH pre-requisite if required.
- To progress in the nursing curriculum, students may not have received more than 2 final course grades that fulfill nursing degree requirements of less than a C in the last five years. Academic forgiveness counts as an attempt. If a student is not successful in fulfilling degree requirements, they are not eligible to continue in nursing.
- Students may repeat one nursing (NURS) course only. Withdrawing with a W from the course or applying Academic Forgiveness counts as an attempt. Students who fail a second nursing course are not eligible to continue in nursing. A student who receives concurrent D's in Pathophysiology and Pharmacology may be eligible to retake both courses concurrently with prior approval from the School of Nursing.
- Students may not exceed a maximum of two attempts, to successfully complete any NURS course. Students who are not successful on a second attempt are not eligible to continue in nursing.
- A minimum grade of C is required in all NURS nursing courses.
- A minimum grade point ratio of 2.5 is required for registration in each nursing course. Additionally, if the student's nursing GPA drops below a 2.5, the student is not eligible to continue in nursing.

Clemson University School of Nursing
B.S. Accelerated Second Degree (ASD) Track
CURRICULUM PLAN 2025-2026

Program Description

The Accelerated Second Degree (ASD) Nursing track is designed for students who have already earned a bachelor's degree from a regionally or nationally accredited college or university. The 20-month track consists of five consecutive semesters (summer, fall, spring, summer, and fall) and leads to a Bachelor of Science degree with a major in Nursing. All program entry requirement courses must be successfully completed prior to the start of classes.

PROGRAM ENTRY REQUIREMENTS

BIOL 1030/1050 General Biology I with lab	4	MICR 2050 Intro to Microbiology	4
CH 1010/1011 General Chemistry I with lab	4	NUTR 2030 Intro to Princ of Human Nutr or NUTR 4510 or 2050	3
BIOL 2220 Hum Anat. And Phys I	4	STAT 2300 Elem. Statistical Inference	3
BIOL 2230 Human Anat. and Phys II	4		

FIRST YEAR

<u>Summer Semester*</u>		<u>Fall Semester*</u>	
NURS 3100 Health Assessment	3	NURS 3040 Pathophysiology	3
NURS 3300 Research in Nurs ^{2,5}	3	NURS 3400 Pharmacotherapeutic Nurs	3
PCID 3150; 3140; 3040 Scientific, Technical or Business Prof Comm & Info Design (if not taken)	3	NURS 3200 Professionalism in Nurs	3
		NURS 3120 Med-Surg I: Found of Nurs	4
	9		13
<u>Spring Semester*</u>			
NURS 3030 Med-Surg II: Nurs of Adults	7		
NURS 3050 Psychosocial Nurs	3		
NURS 3230 Gerontology Nurs	2		
NURS 3330 Health Care Genetics	3		
	15		

SECOND YEAR

<u>Summer Semester*</u>		<u>Fall Semester*</u>	
NURS 4010 Mental Health Nurs	5	NURS 4030 Med-Surg 3: Complex Nurs Adults	5
NURS 4110 Nurs of Children	5	NURS 4140 Community Hlth Nurs & Hlth Promotion	5
NURS 4120 Nurs Women & Fam	5	NURS 4100 Leadership Mgmt. & Nurs Care Pract.	6
	15		16

Total Hours = 124

Footnotes:

¹ See General Education Requirements.

² An alternate course may be substituted. A course substitution form must be submitted.

³ All students must fulfill the global challenges requirement to be eligible for graduation. Three credit hours of Clemson approved global challenges courses must be taken. Course transfers from other universities are not eligible.

⁴ If this requirement is satisfied by another course in the curriculum, elective hours must be taken to cover the credit hours.

⁵ NURS 3300 can count towards your global challenge requirement, if taken at Clemson University. If a student subs NURS 3300 from another institution, the student must take another approved eligible global challenge course. See approved global challenge courses.

**Notes*

- A minimum grade of a C is required in the following courses for progression in the nursing major: BIOL 1030/BIOL 1050 or BIOL 1100, BIOL 2220, BIOL 2230, CH 1010, MICR 2050 or MICR 3050, NUTR 2050, STAT 2300, and the approved MATH pre-requisite if required.
- To progress in the nursing curriculum, students may not have received more than 2 final course grades that fulfill nursing degree requirements of less than a C in the last five years. Academic forgiveness counts as an attempt. If a student is not successful in fulfilling degree requirements, they are not eligible to continue in nursing.
- Students may repeat one nursing (NURS) course only. Withdrawing with a W from the course or applying Academic Forgiveness counts as an attempt. Students who fail a second nursing course are not eligible to continue in nursing. A student who receives concurrent D's in Pathophysiology and Pharmacology may be eligible to retake both courses concurrently with prior approval from the School of Nursing.
- Students may not exceed a maximum of two attempts, to successfully complete any NURS course. Students who are not successful on a second attempt are not eligible to continue in nursing.
- A minimum grade of C is required in all NURS nursing courses.
- A minimum grade point ratio of 2.5 is required for registration in each nursing course. Additionally, if the student's nursing GPA drops below a 2.5, the student is not eligible to continue in nursing.

RNBS Curriculum Information

RNBS Prerequisite Courses (TOTAL = 63 Credits)

<u>Prerequisite Course</u>	<u>Credits*</u>	<u>Examples of Some Equivalent Clemson Course(s) Needed. See TCEL for all accurate equivalent courses.</u>
Communication & Public Speaking	6	ENGL 1030 Accelerated Composition COMM 1500 or COMM 2500 Public Speaking
Mathematical Sciences	3	STAT 2300 Statistics
Biological Sciences and Natural Sciences	20	BIOL 2220 Anatomy & Physiology I (4) BIOL 2230 Anatomy & Physiology II (4) MICR 2050 or MICR 3050 Microbiology (4) <i>AND 2 of the following 4:</i> BIOL 1030/1050 General Biology I (4) BIOL 1040/1060 General Biology II (4) CH 1010 General Chemistry I (4) CH 1020 General Chemistry II (4)
Literature	3	ENGL 2000-level, select from American, British, World Lit, etc.
Non-Literature-Humanities	3	AAH Art Appreciation 2100 (3) <i>or</i> MUSC 2100 Music Appreciation: Music in the Western World (3) <i>or</i> REL 1010 Introduction to Religion (3)
Social Sciences	6	PSYC 2010 Introduction to Psychology (3) SOC 2010 Introduction to Sociology (3)
Nutrition	3	NUTR 3020 Principles of Nutrition (3)
Science & Technology	3	CPSC 1200 Computer Applications (3)
Electives	13	College Transferable Courses
SC REACH ACT	3	HIS 1010 History of the United States (3) POSC 1010 American National Government (3) POSC 1030 Intro to Political Theory (3)

*Use the Transfer Course Equivalency list (TCEL) to determine if the potential course transfers and what the Clemson equivalent would be <https://transferringcredits.app.clemson.edu/transferequivalency.php>

*Only courses in which a grade of "C" or better is earned are considered for transfer credit.

**All Pre-Reqs need to be completed with proof of transcripts before student is allowed in required coursework.

** All students must fulfill the global challenges requirement to be eligible for graduation. Six credit hours of Clemson approved global challenges courses must be taken. Course transfers from other universities are not eligible. The required NURS 3300 (Research) fulfills 3 of the 6 credit hours. Student is responsible for choosing and taking another non NURS eligible course to fulfill the remaining 3 credit hours. See approved global challenges courses in the catalog.

RNBS Required Courses (TOTAL = 35 Credits)

<u>Course Title</u>	<u>Course Credits</u>
NURS 3040 Pathophysiology	3 (3,0)
NURS 3330 Healthcare Genetics	3 (3,0)
NURS 3300 Research in Nursing*	3 (3,0)
NURS 3070 Family Nursing in the Community	4 (3,2)
PCID 3150 Scientific Prof Comm & Info Design	3 (3,0)
NURS 4060 Issues in Professionalism	3 (3,0)
NURS 4250 Community Health Nursing	4 (3,2)
NURS 4050 Leadership and Management in Nursing	3 (2,2)
NURS 3190 Health Assessment for RNs	3 (3,0)
NURS 4500 Critical Care	3 (3,0)
Global Challenge Requirement*	3 (3,0)

*Nurs 3300 fulfills 3 of the required 6 global challenges credit hours. Student is responsible for choosing and taking another non NURS eligible course to fulfill the remaining 3 credit hours. See approved global challenges courses in the catalog. Students may take three credits prior to entering the program, if desired.

RNBS Exemption Credit for NURS Courses

After completion of NURS 4060: Issues in Professionalism with a B or better, students receive credit of 31 hours for course work completed during their nursing diploma or associate degree program. Credit is awarded for the following CU Nursing courses:

Course Title	Course Credit
NURS 3030, Nursing of Adults	7
NURS 3120, Therapeutic Nursing Interventions	4
NURS 4010, Mental Health Nursing	5
NURS 4030, Complex Nursing of Adults	5
NURS 4110, Nursing Care of Children	5
NURS 4120, Nursing Care of the Childbearing Family	5

RNBS Curriculum Progression - Fall Start**

Fall	NURS 3040	Pathophysiology 3(3,0)
	PCID 3150	Scientific Prof Comm & Info Design 3(3,0)
	NURS 4060	Issues in Professionalism 3(3,0)
Spring	NURS 3070	Family Nursing in the Community 4(3,2) <i>7 weeks</i>
	NURS 4250	Community Health Nursing 4(3,2) <i>7 weeks</i>
	NURS 3330	Healthcare Genetics 3(3,0)
	NURS 3190	Health Assessment for RNs 3(3,0)
Summer*	NURS 4050	Leadership and Management 3(2,2)
	NURS 3300*	Research in Nursing 3(3,0)
	NURS 4500	Critical Care

*Summer courses are only offered during summer semester.

**Student may choose when to take their 2nd (non NURS) global challenges course in their curriculum. NURS 3300 counts as three of the six global challenges credit hours. See approved global challenges courses. The remaining three credit hours must be a non NURS class.

RNBS Curriculum Progression – Spring Start**

Spring	NURS 3040	Pathophysiology 3(3,0)
	PCID 3150	Scientific Prof Comm & Info Design 3(3,0)
	NURS 4060	Issues in Professionalism 3(3,0)
Summer*	NURS 4050	Leadership and Management 3(2,2)
	NURS 3300*	Research in Nursing 3(3,0)
	NURS 4500	Critical Care
Fall	NURS 3070	Family Nursing in the Community 4(3,2) <i>7 weeks</i>
	NURS 4250	Community Health Nursing 4(3,2) <i>7 weeks</i>
	NURS 3330	Healthcare Genetics 3(3,0)
	NURS 3190	Health Assessment for RNs 3(3,0)

*Summer courses are only offered during summer semester.

**Student may choose when to take their 2nd (non NURS) global challenges course in their curriculum. NURS 3300 counts as three of the six global challenges credit hours. See approved global challenges courses in the catalog. The remaining three credit hours must be a non NURS class.

Potential Graduate Courses for RNBS Students*

NURS 8010 – Advanced Family and Community

NURS 8040 – Knowledge Development in Nursing

NURS 8090 – Pathophysiology

NURS 8270 – Foundations of Nursing Education

NURS 8500 – Nursing Informatics

*Not all courses are offered each semester or academic year. Enrollment depends on space available.

RNBS Transfer Credit Evaluation

- When students are accepted into the RNBS Program, they are responsible to ensure that all courses are officially evaluated for transfer. Students will receive a Transfer Credit Evaluation form from University Admissions when they are officially accepted.
- For any course not listed on the Transfer Course Equivalency List (TCEL), a designated faculty member from the course's home department must evaluate the course for transfer credit. In this case, the student will be required to provide a course description from the sending institution.
- When all courses are approved for transfer, the transfer evaluation will be reviewed by the RNBS Student Program Coordinator. In the case where a course does not transfer, the student will be required to take the course to meet degree requirements.
- All students must complete 35 credit hours of study at Clemson University in order to meet residency requirements.
- Students are responsible for ensuring that all course work in their curriculum plan is completed for graduation.

RNBS Residency Requirement

Upper division nursing courses must be taken at Clemson University in order to meet the university's Residency Requirement. These courses cannot be challenged on the basis of examination or work experience. Although many RN's have years of experience that will support their knowledge base, these courses are designed to provide a theoretical and experiential framework for professional practice and will serve as a foundation for courses in the graduate program.

RNBS Clinical Course Requirement

Only registered nurses may enroll in clinical courses offered in the RNBS completion program.

RNBS Independent Study Guidelines (NURS 4990)

1. Prior to registration for NURS 4990, the student must seek approval from a faculty member who agrees to guide the experience.
2. Student will formulate objectives, plan of study, and evaluation methods in consultation with the faculty member.
3. A copy of the above will be submitted to the Director of the School of Nursing within three weeks after the start of the semester.
4. A maximum of 3 hours of NURS 4990 may be taken.

RNBS Special Topics Course (NURS 3000)

Nursing 3000: Special Topics Course. To be offered at various times. Courses include content regarding specific interests. These courses are elective courses and are not mandated by the curriculum for graduation.

RNBS Summer Semester

Selected nursing courses may be offered in summer school contingent upon availability of funds, adequate student enrollment and faculty availability. However, the School of Nursing does not guarantee that any nursing course will be scheduled during the summer sessions. Information about summer offerings will be distributed in advance of on-line registration.

RNBS Policies Regarding Progression

1. A minimum grade of "C" or better is required in science and nursing courses.
2. A minimum grade point ratio of 2.5 must be achieved in all required nursing courses for progression to the next level. If the student's nursing GPA drops below 2.5, the student is not eligible to continue in the nursing program.
3. A minimum grade point ratio of 2.5 is required for registration in each nursing course.
4. Students may not exceed a maximum of two attempts, to complete successfully any NURS course. Students who are not successful on a second attempt are not eligible to continue in the nursing program.
5. Students may repeat one nursing (NURS) course only. Withdrawing with a W from the course or applying Academic Forgiveness counts as an attempt. Students who fail a second nursing course are not eligible to continue in the nursing program.
6. Students must pass didactic and clinical components to pass all clinical courses.

Bachelor of Science in Nursing Course Descriptions

Please see Undergraduate Announcements for Pre/Co-requisites

Nursing 1020 Nursing Success Skills 2(2,0) Introduction to a variety of topics critical to a student's success as a Nursing major and future professional. Topics include time management, goal setting, test taking, campus and nursing department resources and policies, critical thinking, and diversity. Students have the opportunity to discover and practice many procedures, techniques, and tips, as well as apply principles learned to their future career in nursing.

Nursing 1400: Fostering Innovation in Nursing 3(3,0) Nursing students are empowered to create innovative solutions to local, national, or global healthcare problems. The course challenges students to think critically about the ever-changing field of healthcare while developing global solutions for the benefit of healthcare providers and patients alike. Students are introduced to design thinking and technology in the delivery of health care. The course covers existing healthcare applications, emerging trends, and forecasts future needs.

Nursing 1980: Creative Inquiry – Nursing 1-4 (1-4, 0) In consultation with and under the direction of a faculty member, students pursue scholarly activities individually or in teams. These creative inquiry projects may be interdisciplinary. Arrangements with mentors must be established prior to registration. May be repeated for a maximum of eight credits.

Nursing 2980: Creative Inquiry – Nursing 1-4 (1-4, 0) In consultation with and under the direction of a faculty member, students pursue scholarly activities individually or in teams. These creative inquiry projects may be interdisciplinary. Arrangements with mentors must be established prior to registration. May be repeated for a maximum of eight credits.

Nursing 3000: Seminar in Health Care Topics 1-4(1-4,0-9) Individualized in-depth study in a selected health care area; may have a clinical component and/ or special projects. Open to non-nursing majors. May be repeated for a maximum of six credits.

Nursing 3030: Med-Surg II: Nursing of Adults 7(3,12) Incorporates theoretical and empirical knowledge from the physical and social sciences. Uses critical thinking to provide holistic, safe individualized nursing care to adults, including health promotion, maintenance, restoration, and health teaching.

Nursing 3040: Pathophysiology for Health-Care Professionals 3(3,0) Focus is on disease mechanisms and recognition of the manifestations of these mechanisms in body systems. Discussion will also include pharmacologic and mechanical interventions commonly associated with specific disease processes and application to patient-care situations.

Nursing 3050: Psychosocial Nursing 3(3,0) Course uses a life span approach to examine psychosocial, developmental, family, and cultural factors that influence individuals from diverse populations and their families in the promotion, maintenance, and restoration of health. The use of the nursing process, critical thinking, therapeutic communication, and psychosocial nursing interventions is explored.

Nursing 3070: Family Nursing in the Community 4(3,2) Bridge course for registered nurse students which focuses on nursing care of families across the lifespan in the context of the community. Major emphasis is on practice activities to assist individuals in achieving or maintaining wellness in the family, home, and community environments.

- Nursing 3100: Health Assessment 3(2,3)** Introduces concepts of health, wellness, and illness. Focuses on physical, psychosocial, and cultural assessment for the well adult client with variations across the life span. Includes interviewing techniques.
- Nursing 3110: Health Promotion Across the Lifespan 2(2,0)** Focuses on health promotion and illness prevention activities across the life span for individual and families in the community. Major emphasis is on nursing's role in the acquisition and maintenance of health as well as the identification and modification of health risk factors.
- Nursing 3120: Foundations of Nursing 4(2,6)** Focus on therapeutic nursing interventions, including selected psychomotor skills, communication skills, and teaching/learning.
- Nursing 3170: Development of the Nursing Profession 3 (3,0)** Explores the evolution of nursing as a profession, the social and technological factors and challenges, struggles and accomplishments of past nursing leaders. Includes strategies for effecting change based on experiences of the past.
- Nursing 3180: Multidisciplinary Approach to End-of-Life Care 3 (3,0)** Integrates principles of care to increase comfort at the end of life, presented within a framework which encompasses the physical, psychosocial, and spiritual dimensions of an individual. Coursework also includes ethical and legal issues related to advance directives, reimbursement, and regulatory topics.
- Nursing 3190: Health Assessment for RNs 3(3,0)** Demonstrate health assessment of well or ill individuals. Emphasis is on data collection as a basis for critical thinking in nursing practice.
- Nursing 3200: Professionalism in Nursing 3(3,0)** Application of critical thinking skills in the professional nursing roles in multidisciplinary approaches to health care. Analysis of the historical development of modern nursing. Examination of issues of nursing care to diverse populations within context of ethical and professional standards.
- Nursing 3230: Gerontology Nursing 2(2,0)** Introduction of theories of aging. Focus on complex health care issues of aging and chronic care including promotion, maintenance and restoration of health of the elderly. Concepts from the sciences address physiological, psychological, and sociological issues of aging and chronic illness.
- Nursing H3280: Honors Seminar I 1 (1,0)** Serves as the foundation for senior honors projects. Students identify a topic of interest, a faculty member, and team members for their honors project and begin to review the literature in their areas of interest. To be taken Pass/Fail only.
- Nursing 3300, H3300: Research in Nursing 3(3,0)** Introduction to conceptual frameworks, models, and theories related to nursing. Analysis of reported research in nursing and related disciplines. Ethical, moral, and legal issues are discussed in relation to nursing research.
- Nursing 3330: Health Care Genetics 3 (3,0)** Focus on the new genetics and the implications for health care professionals. Discussion includes applications of the evolving genetics technology and services to changing life stages. Issues of ethics relevant to various genetic disorders is also addressed.
- Nursing 3340: Integrative Healing: Complementary/Alternative Healthcare 3 (3,0)** Introduction to healing practices that are complementary with/and alternative (C/A) for conventional Western medicine. Includes exploration of research, principles, techniques, and methods of C/A used in health and healing.

Nursing 3400: Pharmacotherapeutic Nursing Interventions 3(3,0) Focus is on integration of nursing process with pharmacotherapeutics, administration, monitoring, and related client education. Includes major drug classifications, indications for use, side effects, interactions, routes of administration, usual dosages and contraindications.

Nursing 3980: Creative Inquiry – Nursing 1-4 (1-4, 0) In consultation with and under the direction of a faculty member, students pursue scholarly activities individually or in teams. These creative inquiry projects may be interdisciplinary. Arrangements with mentors must be established prior to registration. May be repeated for a maximum of eight credits.

Nursing 4010: Mental Health Nursing 5(3,6) Application of theories and the nursing process to identify, implement, and evaluate nursing interventions for the care of clients with psychiatric disorders.

Nursing 4030: Med-Surg III: Complex Nursing of Adults 5(3,6) Focus on the biological, psychological, philosophical, and socio-cultural influences on complex health problems related to acute and traumatic conditions. Emphasis on the concepts of circulation, oxygenation, homeostasis, and compensation in acutely ill adults.

Nursing 4050: Leadership and Management in Nursing 3(2,2) Focus on the role of the professional nurse in managing nursing care. Theories and research related to leadership, power, management, organizations, regulation, and ethics are discussed. Directed laboratory experiences are provided.

Nursing 4060: Issues in Professionalism 3(3,0) Analysis of the development of professional nursing. Consideration of educational issues, legal and economic issues, health policy, leadership, cultural variations, and the influence of values in ethical decisions and nursing practice.

Nursing 4100: Leadership, Management, and Nursing Care Practicum 6 (3,9) Focus is the role of the professional nurse in practicing and managing nursing care. Theories and research related to clinical practice, leadership, power, management, organizations, regulation, ethics, and licensure preparation are discussed. Direct lab experiences are provided under preceptor supervision.

Nursing 4110: Nursing Care of Children 5(3,6) Focuses on child health problems and health maintenance. Emphasis is placed on biological, pathophysiological, psychological, and sociocultural concepts related to nursing care of children with acute, critical, and chronic illnesses. Includes strategies for alleviation of illness, restoration of wellness, promotion and maintenance of health, growth, and development.

Nursing 4120: Nursing Care of Women and Their Families 5(3,6) Focus on health care of women and their families. Emphasis is placed on biological, psychological, and socio-cultural concepts. Identification of appropriate nursing strategies that enhance individual capacity to achieve or maintain wellness in the family, home, community, and hospital environment.

Nursing 4140: Community Health Nursing and Health Promotion 5(3, 6) Focuses on community health nursing of families and community groups, including community assessment, screening, health promotion and health education, with emphasis on the health of clients and population groups in homes, schools, industries and other community agencies and organizations.

Nursing 4150: Community Health Nursing 4(2,6) Consideration of health promotion activities for family and community groups with emphasis on community assessment, screening, and health teaching/counseling. Practice activities will be related to health promotion in population groups and nursing care of homebound clients. Laboratory settings include homes, schools, industries, and other community organizations.

Nursing H4200: Senior Honors I 2 (2,0) Students will develop a proposal for major thesis, direct study project, or research project under the guidance of a faculty preceptor.

Nursing 4250: Community Nursing 4(3,2) Consideration of health promotion activities for groups within the community with emphasis on community assessment, screening, and health teaching/counseling. Practice activities are related to health promotion in population groups and nursing care of homebound clients. Laboratory settings include homes, schools, industries, public health department, and other community agencies.

Nursing H4280: Senior Honors II 2 (2,0) Students will implement a proposal for a major directed study project or research thesis under the guidance of a faculty preceptor.

Nursing 4980: Creative Inquiry – Nursing 1-4 (1-4, 0) In consultation with and under the direction of a faculty member, students pursue scholarly activities individually or in teams. These creative inquiry projects may be interdisciplinary. Arrangements with mentors must be established prior to registration. May be repeated for a maximum of eight credits.

Nursing 4990: Independent Study 1-4 (1-4, 0-9) In-depth study in an area of special interest in Nursing. Students develop specific objectives with a faculty member with expertise in the area of interest. May be repeated for a maximum of six credits.

Departmental Honors Program

The School of Nursing Departmental Honors Program provides nursing students with an opportunity to participate in a faculty-led, advanced, independent, and in-depth research experience related to a clinical problem or professional issue in nursing. The research experience is overseen by a faculty preceptor with expertise in the chosen research area. To qualify for Nursing Departmental Honors, nursing students must meet Clemson University Honors College qualifications and take a minimum of one honors course per semester. To obtain Departmental Honors in Nursing, students must complete four consecutive semesters of departmental honors designated nursing courses (NURS H3280, H3300, H4200, and H4280) beginning fall of the junior 1 semester. Applications for Nursing Departmental Honors are accepted during the spring semester only (during the Sophomore II year). These applications are reviewed and approved by the Nursing Departmental Honors advisor(s). Once approved by Nursing Departmental Honors advisor(s), students must complete the application by applying to the Clemson University Honors College for final approval. The School of Nursing's Departmental Honors Advisors, Dr. Janice Withycombe (Edwards Hall) and Dr. Tracy Lowe (School of Nursing, Greenville) provide academic counseling and pre-registration advisement for all Nursing Departmental Honors students until graduation.

Essential Functions for Nursing Students

ISSUE	STANDARD	EXAMPLES
Critical Thinking	Critical thinking ability sufficient for clinical judgment.	Identify cause-effect relationships; accurately calculate medication dosages. Assemble equipment in sequence for safe use; maintain aseptic environment.
Interpersonal	Interpersonal abilities sufficient to interact with individuals/groups from various social, emotional, cultural, & intellectual backgrounds.	Establish and maintain supportive relationships with patients and other health care providers.
Communication	Communication abilities sufficient for interaction in verbal and written form.	Count aloud and document sponges, instruments, sharps, etc.
Mobility	Physical abilities sufficient to move from room to room and maneuver in small spaces.	Ability to lift, position, push, or transfer patients. Move around in treatment areas; administer CPR. Push/pull or move/lift equipment/supplies (up to 25 pounds). Ability to reach, stoop, bend, kneel, and crouch. Prolonged standing/walking.
Motor Skills	Gross & fine motor abilities sufficient to provide safe & effective care.	Calibrate and use equipment; position patients; assist patients in and out of bed. Use coordinated finger and hand movements.
Hearing	Auditory ability sufficient to monitor and assess health.	Hears monitor alarm, emergency signals, auscultatory sounds, cries for help, voices under protective garb.
Visual	Near/far visual acuity. Sufficient for assessment, & implementation.	Observe patients' responses; reads patients' care plans, consents; gauges, labels, digital printouts, & computer screens.
Tactile	Tactile ability sufficient for assessment of physical health status.	Performs palpation (take a pulse & perceive temperature) &/or those related to therapeutic intervention, e.g. catheter
Smell	Olfactory senses sufficient for maintaining patient safety	Distinguish smells that are contributory to assessing and/or maintaining patient's health status, e.g. smell fire.
Self-Care	Ability to present professional appearance, maintain own health and not place patients in jeopardy.	Implement universal precautions. Use good personal hygiene
Environment	Ability to work in various health care settings.	Work in environment with temperature changes, frequent contact with liquids, sufficient noise to cause distraction, and other hazards. Implement universal precautions with variations.

Check list of Essential Functions I have reviewed and understand the minimum essential functions necessary for nursing.

Demonstration of one or more of these core standards may be required. (**please specify*)

I can meet these requirements.

I do not meet these requirements.*

I am capable of meeting these requirements with the following accommodations:*

**Critical Thinking,
Interpersonal &
Communication
Mobility &
Motor Skills
Hearing & Visual
Tactile & Smell
Self-Care
Environment**

*Indicates awareness of applicant to make appointment with Disability Services at 656-6848 (voice/TTY) if accommodations are required to meet Essential Requirements of Nursing Students. I, the undersigned, do hereby testify that I have read and understand the Essential Functions for Nursing Students required for admission to Nursing and that the above statements, as indicated, are true.

Student's Signature _____ Date _____ Telephone Number _____



Kaplan is a series of secure online tests designed to evaluate the knowledge of students in a basic nursing curriculum leading to RN licensure. The results enable nursing faculty to identify knowledge deficits in specific content areas, so that early interventions can be implemented to positively influence student outcomes. The School of Nursing requires that all pre-licensure baccalaureate students demonstrate content mastery in the discipline. The School of Nursing Pre- licensure Baccalaureate Program utilizes the Kaplan Program and the Kaplan NCLEX-RN live review. Formative testing occurs throughout the program at prescribed intervals. Summative testing occurs during the Senior 2 semester. Bonus Points: The goal of providing incentive bonus points is to enhance student performance on Kaplan tests. It is at the discretion of the faculty to provide up to 3 exam bonus points for students that score within the minimal benchmark on Kaplan exams. Please refer to your course syllabi or reach out to your faculty for more details.

SECTION III: ADVISING, REGISTRATION, POLICIES, & PROCEDURES

School of Nursing Policies Regarding Progression

(See also School of Nursing Student Acknowledgement of Policies and Expectations)

- All nursing (NURS) courses must be taken at Clemson University
- A minimum grade of a C is required in the following courses for progression to junior year clinical courses: BIOL 1030/BIOL 1050 or BIOL 1100, BIOL 2220, BIOL 2230, CH 1010, MICR
- 2050 or MICR 3050, NUTR 2050, STAT 2300, and the approved MATH pre-requisite if required.
- A minimum grade of C is required in all NURS nursing courses.
- To progress in the nursing curriculum, students may not have received more than 2 final course grades that are fulfilling nursing degree requirements of less than a C in the last five years. Academic forgiveness counts as an attempt.
- A minimum grade point ratio of 2.5 is required for registration in each nursing course.
- Additionally, if the student's nursing GPA drops below a 2.5, the student is not eligible to continue in nursing.
- Students may repeat one nursing (NURS) course only. Withdrawing with a W from the course or applying Academic Forgiveness counts as an attempt. Students who fail a second nursing course are not eligible to continue in nursing. A student who receives concurrent D's in Pathophysiology and Pharmacology may be eligible to retake both courses concurrently with prior approval from the School of Nursing.
- Students may not exceed a maximum of two attempts, to successfully complete any NURS course. Students who are not successful on a second attempt are not eligible to continue in nursing.
- Students must pass didactic and clinical components to pass all clinical courses.

Course Space Priority

Students whose progress through the curriculum is delayed for any reason, including course withdrawal, course failure, or medical withdrawal will be admitted to successive clinical courses as space permits. In all cases, first-time enrollees will be given priority over students who are returning or repeating a course.

Validation of Prior Coursework

Students who have been out of clinical courses for one year or more will be required to demonstrate competency in all previously acquired nursing knowledge and clinical skills.

Student Records and Confidentiality

Academic records for the purpose of advising are maintained in the Office of Student Services. The School of Nursing will not release information to a third party without the written consent of the student.

Advising

1. All students will be informed of their professional advisor prior to entering the program. (see page 48 regarding CBSHS advising.)
2. Advisors will contact their advisees by email prior to the registration time of each semester to set up a meeting time to discuss the student's progress. Group faculty advising will be completed in addition to individual advising.
3. Students are required to meet with their advisors at the arranged time in order to discuss their progress and classes they plan to take.
4. Any student not meeting with the advisor at the arranged time will not be provided with the registration PIN number, and therefore will not be eligible to register for classes.
5. During advisement, students will be approved to take only courses for which they have had the specified pre-requisites. Students will not add courses for which they are not approved. **Students will not receive credit for courses taken out of sequence. Any student identified taking a course out of sequence will be dropped from the course.**
6. In the event that a professional advisor does not contact advisees or does not attend the arranged meetings, students should contact the Director Undergraduate Programs.
7. If a student is advised to take a required course prior to entering clinical semesters and the students opts not to, the advisor nor faculty are responsible for ensuring a compatible schedule for the student to meet graduation requirements.

Grading Policies for Undergraduate Nursing Courses

1. The following policies have been implemented by the School of Nursing Faculty:
2. Grade Scale:
 - a. A = 90-100
 - b. B = 80-89
 - c. C = 75-79
 - d. D = 70-74
 - e. F = Below 70
3. Nursing course grades are determined by the numerical score earned in the classroom and Pass/Fail in the clinical laboratory. In order to pass the course, a student must earn a minimum of 75 in the class and a pass (P) in the clinical laboratory.
4. Rounding up: The School of Nursing requires that students achieve a minimum grade of
5. 75 before any grade can be "rounded up." For example, **74.9 does not round up to 75**. After the student has achieved a minimum grade of 75, the choice to round up lies with the faculty member in charge of the course.
6. Regular and punctual attendance at all clinical labs is required. Unexcused absences from clinical labs will result in course failure (see attendance policy).
7. All final examinations in clinical nursing courses are cumulative and worth 30% of the course grade. Percentage of grade for final exams for nursing courses that do not have a clinical component are at the discretion of the faculty member responsible for the course.

Anticipated Absences

Students who must miss class or clinical due to official functions must contact all affected lead teachers and clinical faculty in writing with official notification from the sponsoring department,

including anticipated dates of the absences, within 1 week of the beginning of the semester. For each anticipated absence, the student must make an appointment, at least 2 weeks before the absence, with all affected faculty members to determine how best to make up any missed content. Failure to do so will result in absences being unexcused. In addition to these steps, students are expected to use the notification of absence (NOA) system.

Class Attendance Policy

1. Ordinarily, there are no excused absences from either class or clinical laboratories. However, it is recognized that students must be absent from time to time. Professional persons demonstrate reliability and dependability in these matters by:
 2. Informing appropriate persons when and why they are going to be absent.
 3. Initiating arrangements for makeup work (if appropriate) with faculty.
 4. Clinical faculty will require that missed clinical laboratories be made up regardless of the reason for absence. The nature of the make-up lab will be determined by the lead teacher for the course.
5. Students should try to overcome minor indispositions that are not contagious and that do not result in decreased safety of the student's performance in the clinical setting. However, they should not attend class or clinical laboratories if they are ill. For example, students who have colds, flu, or other contagious illnesses are not expected to attend class or clinical laboratories. They are expected to notify the appropriate faculty member and clinical agency in a timely manner.
6. Grave illness or death of close family members is a legitimate reason for absence. Attendance at wedding or other celebrations, except under extraordinary circumstances, are not.
7. Attendance at regularly scheduled University functions involving students' participation (e.g., out-of-town band concerts in which the student is a member) is an example of absence that must be negotiated between the student and the faculty member. See Anticipated Absence statement.
8. Attendance at state conventions or other professional meetings, thereby necessitating absence from class, may be approved based on students' grade point average, and with approval by the instructors whose classes are missed, and the Director of the School of Nursing. See Anticipated Absence statement.
9. See Course Syllabi for attendance requirements for each course.

Clinical Absences and Tardiness

Clinical absences are excused only in the case of personal illness documented by a health care provider or extreme extenuating circumstances. The student must notify the faculty member and the clinical agency **at least 30 minutes prior** to the expected starting time for the lab.

Failure to do so may result in failure of the course. All clinical absences must be made up. Absence from $\geq 20\%$ of clinical hours in a course will result in the student being unable to receive credit for the course. For courses with 15 weeks of clinical, a third absence will result in the student being unable to receive credit for the course. For courses with clinical schedules of less than 15 weeks, a second absence would result in course failure.

Tardiness is defined as appearance on the clinical unit at any time past the designated time. Students should begin to develop professional work habits; therefore, the policy states that if three tardies occur, the student may be unsuccessful in the course. The first incidence of tardiness will be documented and the student counseled. The second incidence of tardiness will be documented with referral to the Course Coordinator and will result in a drop of one letter grade for the course. The third incidence may result in course failure.

Communication with Instructors

Please remember that instructors teach multiple courses in multiple programs, in multiple locations, and in multiple formats. Students and faculty should respond to electronic communications within 48 hours, excluding weekends and holidays. Make sure to include a subject in the subject line. Phone calls to instructors should be made after other attempts to communicate with faculty have been unsuccessful or for emergencies. Adhere to hours provided in each course syllabus. Phone calls should be returned within 48 hours, excluding weekends and holidays also.

Requesting Accommodations

The School of Nursing complies with federal ADA guidelines. Any student who requires accommodation should contact Clemson Student Accessibility Services (SAS) at Suite 239, Class of '56 Academic Success Center Building by phone at 864-656-6848 or by email at studentaccess@lists.clemson.edu. If a nursing student or applicant believes that he or she cannot perform required activities satisfactorily without reasonable accommodation, then he or she should register with Clemson University's Student Accessibility Services. It is the student's responsibility to request the accommodation in a timely manner; the university does not provide for retroactive accommodations. Upon receipt of any request for accommodation, SAS will require the student to provide the appropriate and necessary documentation to confirm the disability. Once the disability is confirmed, SAS will determine the appropriate accommodations and either provide for or arrange such reasonable accommodations, academic adjustments, and/or auxiliary aids and services for students. The student is responsible for maintaining contact with SAS and for working with faculty to plan appropriate learning experiences. Faculty are not obligated to provide any accommodations to students without official documentation.

Guidelines for Expressing Student Concerns

Students' concerns or complaints about the Undergraduate Program should be handled in a professional manner. Discussion of these issues should be based on facts and should be conducted using a collegial, problem-solving approach. An attempt should be made to resolve the issue in a manner which is satisfactory yet maintains the integrity of the Nursing program. If the issue(s) cannot be resolved through the procedures below, a formal grievance may be filed (See Undergraduate Announcements). Issues involving a course, such as the quality of instruction and fairness and equity in awarding grades should use the following procedures:

1. If the issue(s) concerns a single course, the student(s) should make an appointment

2. with the course instructor and attempt to come to an amicable resolution.
 3. If the issue cannot be settled at the course level, an appointment should be made to discuss the issue with Director of Undergraduate Programs, Dr. Leslie Ravan at 439 Edwards Hall in Clemson or 459 CU Nursing in Greenville. Dr. Ravan can be reached at wagner3@clemson.edu or 864-720-2059
 4. If the issue cannot be settled with the Director of Undergraduate Programs, an appointment should be made to discuss the issue with the Director of the School of Nursing, Dr. John Whitcomb.
 5. If previous discussions do not resolve the issue, an appointment should be made with the Dean of The College of Behavioral, Social and Health Sciences, Dr. Leslie Hossfeld (116 Edwards Hall).
- Issues involving the Undergraduate Program such as curriculum, sequencing and scheduling of courses should begin with step 2 above.

Reserve Officers Training Corps (ROTC) Fact Sheet

- The Departments of the Army and the Air Force both maintain ROTC units at Clemson University. Their mission is to produce officers of high quality to pursue both technical and nontechnical careers in the U.S. Army and Air Force. Both two-and four-year programs are available. The four-year program consists of the basic course for freshmen and sophomores and the advanced course for juniors and seniors.
- Scholarships are available to selected ROTC students. Each scholarship pays for tuition, books, and laboratory expenses, in addition to a month stipend during the school year. Non- scholarship advanced cadets also receive a stipend per month. Basic course credit may be awarded to students having one or more years of military service.
- Selected advanced Air Force cadets receive flight training at government expense. Cadets who complete their major course of study and satisfy commissioning requirements as established by law and/or regulations are appointed Second Lieutenants. Ample opportunity exists for graduate study in both services, with temporary deferments possible.

Nursing Students Enrolled in ROTC

- Bachelor of Science with major in Nursing students who are enrolled in ROTC courses may substitute the free electives for ROTC, thereby meeting the University requirement that each college allow 10 elective credits for ROTC.
- Other courses may be substituted if the Department Chairman of the course in question approves the ROTC course as a substitute.
- Nursing students interested in ROTC may contact Aerospace studies in 300 Tillman Hall, or Military Science in Johnstone Hall for more information.

Dr. Lena Burgess (Edwards Hall, Room 433) provides academic counseling and pre-registration advisement for nursing students enrolled in ROTC.

Textbook Policy

Students are strongly encouraged to keep their pathophysiology, health assessment, pharmacology, therapeutic nursing interventions, psychosocial nursing textbooks, and APA manual as resources for future nursing courses.

Academic Integrity Policy

“As members of the Clemson University community, we have inherited Thomas Green Clemson’s vision of this institution as a ‘high seminary of learning.’ Fundamental to this vision is a mutual commitment to truthfulness, honor, and responsibility, without which we cannot earn the trust and respect of others. Furthermore, we recognize that academic dishonesty detracts from the value of a Clemson degree. Therefore, we shall not tolerate lying, cheating, or stealing in any form.” (<http://www.clemson.edu/academics/integrity/>).

The Academic Integrity policy states that plagiarism “includes the copying of language, structure or ideas of another and attributing the work to one’s own efforts” (Undergraduate Catalog). The definition of plagiarism does not differentiate between deliberately using someone else’s work without attribution or doing so unintentionally.

Both are plagiarism! Some common forms of plagiarism are:

- Directly reproducing or paraphrasing someone else’s work (published or unpublished), including insights and opinions, without attribution, regardless of length.
- Failing to clearly identify quoted material by using quotation marks (for short sections) or block text (for larger sections).
- Directly quoting your own text from previous projects or papers, without attribution. Plagiarism also includes using someone else’s ideas, art, figures, tables, maps, charts, diagrams, and so forth, even if you recreate or reformat the material.

An exception is made for material that is common knowledge. If information is readily available from general reference sources in the chosen field, or if the information appears undocumented in several sources, it may be common knowledge. Whether material is common knowledge is often a judgement call. If in doubt err on the side of caution and cite the source. Never copy text *of any kind* and use it as your own.

Artificial Intelligence

Artificial intelligence (AI) is becoming more prevalent in all phases of life including on college campuses. AI tools continue to transform teaching, learning, and research when used properly; however, improper use negatively impacts student learning and the generation of original and creative thought that is a core intent of the academy. Improper use strikes at the heart of academic integrity. All submissions to meet course and/or degree requirements must either be students’ own work or must clearly acknowledge the source (including if AI is used). Students must be able to demonstrate understanding of the content and/or intellectual contributions. Faculty reserve the right to allow or deny the use of AI in their courses and students should refer to the course syllabus.

Policies Governing Student Behavior

The School of Nursing enforces two sets of guidelines governing student behavior when students are functioning in the role of student nurse. The first is the Code of Conduct which addresses general expectations for conduct in the classroom and clinical settings.

The second is the Standards of Professional Practice, which more specifically addresses responsibility and accountability for students in the provision of nursing care.

Code of Conduct

Students of Clemson University School of Nursing are expected to demonstrate professional conduct in both the clinical and classroom settings. Students will demonstrate professional conduct by:

- Attending all class and clinical sessions. Orientation is considered clinical.
- Being prepared for and attentive during class and clinical.
- Arriving and leaving on time for class and clinical.
- Refraining from holding private conversations during class.
- Maintaining respectful, constructive verbal and non-verbal interactions with faculty, peers, and clinical agency personnel.
- Turning off cell phones during class and clinical. Students are not allowed to have cell phones on during class except with faculty permission during a family emergency, and then it must be on vibrate. Students are not allowed to have cell phones on during clinical. Any cell phone use during clinical, except for during approved breaks, is considered patient abandonment and will result in a U for the day.
- Turning off laptops and other electronic devices except for use in class-related activities.
- Refraining from signing in for another student for class attendance or any other activity for which signing in is required. Signing in for another student is considered academic dishonesty and will be referred to Academic Integrity Committee
- Taking tests in the approved setting. Students must take Kaplan in a proctored environment and must sign a roster to document their presence. Failure to do so is considered academic dishonesty and will be referred to Academic Integrity Committee.
- Refraining from practicing invasive procedures without supervision. Students will not practice of any invasive procedure in an unsupervised setting. Such unsupervised practice is a violation of the Nurse Practice Act as well as School Policy and Code of Conduct and will result in dismissal from the program.
- Refraining from taking equipment without approval. Students will not take any equipment without authorization from any clinical practice. Taking equipment without approval is considered theft and will result in referral to the Board for Ethics and Community Standards for disciplinary action.

Students who fail to meet the above expectations will receive a written reprimand specifying the problem behavior and expected behavior change. The faculty member will counsel the student to clarify expectations and obtain the student's signature acknowledging the reprimand and expectations. If the problem behavior is related to a clinical experience, the student will receive an unsatisfactory for the clinical day. The reprimand will be noted on the student's clinical evaluation tool and a copy of the reprimand will be maintained in the student's file. A second written reprimand regarding any of the above behaviors will result in the student's final grade being dropped by one letter grade. A third breach of the above code of conduct will result in the students being dropped from the course. If the student has inadequate withdrawal hours or if the date is past the drop date, the student will be awarded a D in the course.

Breach of the following expectations on **even one occasion** may result in failure of the course. Students are always expected to:

- Notify the clinical instructor at least 30 minutes prior to any clinical tardiness or absence. Sending word by a classmate, emailing, and/or leaving a message is not adequate. **The student must speak to the instructor and is responsible for having the phone number and contact information available when needed.**
- Be truthful and honest. Cheating and/or providing false information to faculty members or clinical personnel will not be tolerated and can result in dismissal from the Nursing Program.

Civility Statement

Students of Clemson University are expected to demonstrate professional conduct in both the classroom and the clinical settings. Students will demonstrate professional conduct by maintaining respectful, constructive verbal and non-verbal interactions and written communication with faculty, peers, and clinical agency personnel.

Students who fail to meet the above expectations will receive a written reprimand specifying the problem behavior and expected behavior change. The faculty member will clarify expectations and obtain the student's acknowledgement of expectations. A copy of the reprimand will be maintained in the student's file. A second written reprimand regarding any of the above behaviors will result in the student's final grade being dropped by one letter grade. A third breach of the above code of conduct will result in the students being dropped from the course. If the student has inadequate withdrawal hours or if the date is past the drop date, the student will be awarded a D in the course.

Breach of the following expectation on even one occasion may result in failure of the course: Students are always expected to be truthful and honest. Cheating and/or providing false information to faculty members or clinical personnel will not be tolerated and can result in dismissal from the Nursing Program.

Standards of Professional Practice

Nursing students are expected to demonstrate responsibility and accountability according to the Standards of Professional Practice. Practice may be considered unsafe and/or unprofessional when a student fails to use the nursing process effectively by engaging in one or more of the following activities:

1. Failure to recognize the need for assistance when unprepared for nursing action.
2. Failure to take nursing action when such action is essential to the health and safety of the client.
3. Failure to recognize the influence of own attitudes and behavior on care of clients.
4. Failure to assume responsibility for completing nursing actions.
5. Performing actions which are detrimental to the health and safety of the client.
6. Compromising patient confidentiality. No identifying patient information is to be recorded on clinical paperwork or Personal Digital Devices. Clinical paperwork and Personal Digital Devices are to be safeguarded at all times to prevent loss and access by unauthorized people.
7. Functioning outside the scope of student nurse practice.
8. Violating clinical agency policies or procedures.
9. Attending any clinical laboratory while under the influence of alcohol or drugs (please note that any student violating this provision is also subject to the recommendation of the Drug and/or Alcohol Abuse Policy Procedure in the Clemson SON Student Handbooks).

Students violating a Standard of Professional Practice will be counseled and may receive an Unsatisfactory grade for the clinical, resulting in failure of the nursing course. Any student committing a second violation of the Professional Practice in any nursing course for the duration of the program may be immediately dismissed from the School of Nursing.

The School of Nursing has the authority to dismiss any student if he or she conveys deliberate false information regarding nursing care.

Approved by SON Faculty February 20

Students who fail to meet the above expectations will receive a written reprimand specifying the problem behavior and expected behavior change. The faculty member will counsel the student to clarify expectations and obtain the student's signature acknowledging the reprimand and expectations. If the problem behavior is related to a clinical experience, the student will receive an unsatisfactory for the clinical day. The reprimand will be noted on the student's clinical evaluation tool and a copy of the reprimand will be maintained in the student's file. A second written reprimand regarding any of the above behaviors will result in the student's final grade being dropped by one letter grade. A third breach of the above code of conduct will result in the students being dropped from the course. If the student has inadequate withdrawal hours or if the date is past the drop date, the student will be awarded a D in the course.

Recommended Technology Capabilities

- Windows or Macintosh operating system
- Internet access
- Highly recommended to have Cable modem or DSL
- Internet Explorer, Mozilla Firefox, or Safari
- Microsoft Office
- Macromedia Flash Player
- Web camera
- Microphone, headphone
- Computers are also available in the University Center library

Distance Education Guidelines

The School of Nursing uses the Canvas Learning Management System to facilitate online education. Students are expected to actively participate in all online assignments to be successful in their courses. Canvas can be opened by:

1. Opening the internet browser to Clemson at www.clemson.edu
2. Select the Student link
3. Select the Canvas menu option
4. Login with the Clemson University name and password
5. Click on the course at the welcome page
6. Enter the Canvas classroom

Instructors will use Canvas as they deem appropriate for each course. Each instructor will review the setup of his/her course and requirements for discussion boards, participation, deadlines for participation, etc. Please refer to each syllabus for guidelines.

Instructors may require synchronized or asynchronous participation. Synchronous participation requires that students participate with each other and/or the instructor at the same time.

Asynchronous participation requires that students participate at different times, but read and assimilate information from one another's postings.

Instructors may require various levels of online participation. For example, one instructor may require students to log into Canvas 3 times per week while another instructor may require 4 times per week.

Netiquette

Remember when communicating electronically that the person at the other end cannot see your facial expression nor perceive other indicators of your intended emotional expression. Therefore, things can be taken out of context and the reader of the communication may misconstrue what the writer intended. A message may be seen as angry or judgmental when it was not intended to be that way. Please be mindful of all your communication using email and Canvas.

Using all capital letters may be interpreted as shouting. Be sure that any use of humor can be interpreted as humor and that it is not offensive in any way. Keep critiques constructive. Do not be antagonistic. Do not plagiarize. Be professional at all times.

Helpful Websites

Clemson University	http://www.clemson.edu
Technology Help	http://www.clemson.edu/ccj
Library Services	http://www.lib.clemson.edu
Registrar's Office	http://www.registrar.clemson.edu
Financial Aid	http://www.clemson.edu/financial-aid/
CU CAPS	https://www.clemson.edu/campus-life/student-health/caps/

Peer to Peer File Sharing

In regard to the appropriate use of copyrighted materials, the use of peer-to-peer (P2P) file-sharing networks for the sole purpose of obtaining materials outside of the copyright owner's exclusive rights of reproduction and distribution is a violation of U.S. federal law and could be subject to disciplinary action by the University. According to the U.S. Copyright Office:

"Uploading or downloading works protected by copyright without the authority of the copyright owner is an infringement of the copyright owner's exclusive rights of reproduction and/or distribution. Anyone found to have infringed a copyrighted work may be liable for statutory damages up to \$30,000 for each work infringed and, if willful infringement is proven by the copyright owner, that amount may be increased up to \$150,000 for each work infringed. In addition, an infringer of a work may also be liable for the attorney's fees incurred by the copyright owner to enforce his or her rights.

Whether or not a particular work is being made available under the authority of the copyright owner is a question of fact. But since any original work of authorship fixed in a tangible medium (including a computer file) is protected by federal copyright law upon creation, in the absence of clear information to the contrary, most works may be assumed to be protected by federal copyright law.

Since the files distributed over peer-to-peer networks are primarily copyrighted works, there is a risk of liability for downloading material from these networks. To avoid these risks, there are currently many "authorized" services on the Internet that allow consumers to purchase copyrighted works online, whether music, e-books, or motion pictures. By purchasing works through authorized services, consumers can avoid the risks of infringement liability and can limit their exposure to other potential risks, e.g., viruses, unexpected material, or spyware." This includes sale of instructional materials. No student shall sell or attempt to sell any information provided by any University member in any course of study offered at Clemson University (Clemson University Code of Conduct #15) –Added 8/25/16

Computer Policies and Resources for School of Nursing

As a Clemson University Nursing student, you are expected to uphold high standards of digital responsibility. Given your involvement in healthcare environments, safeguarding sensitive information, including patient-related data, is not just a university requirement but a professional obligation. This guide summarizes essential Clemson IT policies and offers practical advice to help you stay secure and compliant.

Key Clemson IT Policies for Students

- A complete list of Information Technology policies are available [here](#), but the most pertinent policies are listed below.
 - [Acceptable Use Policy](#)
- Outlines responsible use of Clemson's IT resources. Students must not engage in activities that compromise system integrity or violate privacy.
 - [Accounts & Password Management Policy](#)
- You are responsible for maintaining the security of your Clemson credentials. Use strong, unique passwords and never share your login information.
 - [Cybersecurity Awareness Training](#)
- Students must complete cybersecurity awareness training to recognize phishing, malware, and other threats in order to have continued access to Clemson University IT systems.
 - [Bring Your Own Device \(BYOD\) Policy](#)
- Your personal devices for coursework or clinical work must meet Clemson's security standards, including encryption and up-to-date antivirus software.
 - [Email & Communication Policy](#)
- Use Clemson email for all official communication. Do not send confidential information unless the email is encrypted.

Special Considerations for Nursing Students

As future healthcare professionals, you may work in clinical settings where HIPAA and other healthcare-specific regulations apply. These environments may have stricter IT policies than Clemson's. Always follow the facility's guidelines when using computers or accessing patient data. These facilities will share their requirements with you during their clinical orientation.

General Best Practices:

- Use multi-factor authentication (MFA) for all accounts.

-
- Never store patient data on personal devices.
- Log out of shared systems when not in use.
- Report any suspicious activity or data breaches immediately to CCIT Security.

Device Requirements and Support

While the Clemson Nursing school does not mandate specific hardware, your device should meet the criteria below. Mac and Windows machines are both supported and can support the software programs required by the Nursing curriculum.

- Be less than 5 years old
- Run a supported, updated version of Windows or macOS
- Have full-disk encryption (BitLocker for Windows, FileVault for Mac)
- Include antivirus software (e.g., Microsoft Defender)
- Be regularly updated with all patches and device updates

A list of recommended laptops by major is available [here](#).

TigerHub: Your IT Support Portal

Clemson's new [TigerHub](#) portal is your one-stop shop for IT support and services. [TigerHub](#) allows you to:

- Submit and track IT support tickets
- Search a comprehensive knowledge base
- Access 24/7 support via a virtual agent

Contact Information

Need more assistance? Don't hesitate to contact us for additional assistance.

- Email IThelp@clemson.edu
- Visit the IT offices in 201 Edwards Hall
- Visit the IT offices in Greenville at the 201 Clemson University Nursing building

Clinical Laboratory Requirements

All nursing students are required by the School of Nursing and clinical agencies to meet specific requirements in order to enroll in nursing courses with a clinical lab. A student information form is provided for submission of documentation of having met these requirements (See page 23 or 61 of this handbook). The form along with copies of all required documentation (see page 37) must be received by the School of Nursing Office of Undergraduate Studies by the stated deadline: (July 1st). **If all documentation is not received by the deadline, the School of Nursing will drop those students from all nursing courses.** Students who are dropped must submit all documentation before being added back to the courses during late registration. Reinstatement to courses will be dependent upon space availability. Students who do not comply with the stated requirements will not be allowed to enroll in or attend any clinical nursing labs.

From time to time, new requirements may be added and students may be required to complete and submit new forms or to complete such requirement on-line as instructed. Submission dates may vary and students will be notified by the student services coordinator of required deadlines.

Helpful Suggestions for Completing Clinical Laboratory Requirements

All clinical requirements should be completed beginning May 1st and turned in no later than July 1st. Packets should be turned in to Robin Metler-Atkinson or Cynthia Mihalchick by July 1st. Failure to turn the requirements in by July 1st will result in you being dropped from your clinical courses.

Please do not turn in original copies of documentation. Please turn in copies with your Student Information Sheet and keep the originals in a file in your possession.

Remember the deadlines and make certain you have turned in everything to avoid being dropped from your nursing courses. If dropped, the School of Nursing cannot guarantee students will be placed back into the original sections of the courses from which they were dropped.

Please read the following information carefully.

Clemson University School of Nursing IMMUNIZATION & ENROLLMENT REQUIREMENTS

Students must follow CUSON and clinical agency requirements. **All Immunization & Enrollment requirement information and due dates will be relayed to the student via students' Clemson.edu email.** Requirements are subject to change and will be updated as needed. Documents must be submitted in .pdf format and submitted via email to the cohort-specific Clinical Clearance Coordinator for their cohort/program.

Acceptable Forms of Vaccination Documentation

- All Forms must have names, DOB, etc.
- Copy of vaccination or immunization record
- Copy of laboratory report
- Form signed by health care professional
- EMR detailed with patient name, date, etc.

Required Immunizations

MMR (Measles, Mumps, Rubella): Submit verification of a series of 2 doses of vaccine with dates.

Hepatitis B (Hep B): Submit verification of series of three (3) Hep B shots.

Varicella (Chicken Pox): Submit verification & dates of 2 doses of the varicella vaccine, or documentation of positive titer showing immunity. Report of having had the chicken pox is **not** acceptable. You must have 2 doses or positive titer.

Tdap (Tetanus/Diphtheria/Pertussis): Submit documentation of immunization. Given every 10 years. Immunization must be current & maintained.

Flu Shot: Required documentation due **annually** by November 1st.

Tuberculosis Screening

Tuberculosis Screening is required annually with the first submission being a **Two-Step PPD** (two separate TB tests performed within 3 weeks of each other). A **QuantiFeron Gold blood test** can be substituted for the Two-Step PPD.

Criminal Background Check (CBC):

Current background check by SRandl at www.srandi.com for Clemson University NUR. Letter of expungement or satisfaction required for any violations or arrest shown on CBC.

BLS / CPR Certification

A valid BLS/CPR certification must be held during enrollment in nursing program. The **ONLY** acceptable CPR certification is the in-person BLS/CPR for Health Care Providers 2-year certification through the **American Heart Association** (www.heart.org). The course must include 1 person/2 person, infant, child, choking & AED. **NOT Acceptable:** Community CPR, Heart Saver CPR, or Red Cross CPR.

Professional Liability Insurance

www.nso.com

Professional Liability Insurance for student nurses with limits of \$1,00,000 per occurrence / \$6,000,000 aggregate. Insurance is required before starting clinical and renewable yearly while in the nursing program.

COVID-19 Vaccine

Documentation of the COVID-19 vaccine is recommended but not required. Record should show date(s) of vaccine and manufacturer. **If not vaccinated, some agencies require an Approved Medical or Religious Exemption from affiliating hospital**

Additional Health Requirement Information

- Completing your health requirements by the assigned due dates is a professional responsibility expected of all students. Failure to meet all health, certification, and documentation requirements by designated deadlines will prevent the student from beginning or continuing in the nursing program. The student may be dropped from all nursing courses. Reinstatement to nursing courses will depend on space available.
- Please make copies of all documentation required, keep originals in your files, and turn in copies of documentation as one complete packet. Faxed copies not accepted.
- Students are encouraged to report any physical or psychological changes that may impact their ability to progress in the nursing program to their faculty advisor.
- Immunizations prevent thousands of deaths each year and prevent countless disabilities. When receiving immunizations, care should be taken to read recommendations, contraindications and risks for each immunization. If an immunization is contraindicated due to allergy, disease or pregnancy, written verification of the vaccination contraindication must be submitted to the SON with signature of health care provider and student.
- Meningococcal vaccine is recommended in addition to the required vaccines. Students should have one meningococcal vaccine in the dose and route specified by manufacturer.

Health Protection Policy for Faculty and Students

All students and faculty are expected to provide quality care to all clients whatever their diagnosis. Faculty and students must be aware of policies and procedures to reduce the risk of infection to self and others. Students will be taught current information regarding preventing the acquiring and transmitting of infections and will be provided laboratory simulation practice utilizing Standard Precautions. In the event that a nursing student is exposed to an infectious disease or injured at a clinical facility, the student should report immediately to the instructor and nurse manager then proceed to employee health or the emergency room as directed. Any incident must also be reported to the School of Nursing at 864-656-7622.

Students with special health concerns that may place them at risk during clinical experiences should discuss their situations with the Director of Undergraduate Programs and Lead Teacher for the clinical course prior to the beginning of the clinical experience. These students may be required to submit medical clearance with specific guidelines for their clinical experiences.

Students who are unable to provide clinical care without undue risk may be required to delay taking clinical courses until they are safely able to do so.

Student Policy Governing Use and/or Abuse of Drugs and/or Alcohol

Use of substances which interfere with the judgment and/or motor coordination of students of the School of Nursing pose unacceptable risk for patients, the University, the faculty and health care agencies. Therefore, use of alcohol, use of illegal drugs and/or the misuse of legal therapeutic drugs by nursing students while engaged in any portion of their educational experience is strictly prohibited. Furthermore, nursing students are strictly prohibited from being under the influence of alcohol or any drug while engaged in any portion of their formal educational experience. Any faculty who suspect a violation of this policy are **required** to take action. The actions to be taken are spelled out in the procedures which follow. Students are required to read and acknowledge by signature that they understand this policy. Parents or guardians of students will be informed of the policy. As this policy refers to positive drug/alcohol screen procedures, the following definitions of positive will be used:

- Screen results indicating use of an illegal drug;
- Screen results indicating non-therapeutic drug level of prescribed or non-prescribed drugs;
- Screen results indicating presence of alcohol in blood.

Drug Policy and Procedure Statement

The Joint Commission (TJC, 2004) requires that all staff, students and faculty meet standards relative to criminal background and freedom from drugs. In compliance with Joint Commission and clinical agency requirements, Clemson University School of Nursing requires drug testing (urine screens).

Procedure for Drug Testing

Prior to participation in clinical facilities, students will be required to follow the procedures established by the School of Nursing. **All costs associated with testing are the responsibility of the student.** Tests are conducted by a qualified laboratory, using established methods and procedures. Confidentiality of the student, as well as the integrity of the urine sample, will be protected. The procedure for collection, as determined by the collection site, will involve a witness to the voiding of the urine sample, securable urine containers, and chain of custody procedures. The urine sample will be screened for amphetamines, barbiturates, benzodiazepines, inhalants, cocaine, marijuana, methadone, methamphetamines, phencyclidines (PCP), opiates/morphine and tricyclic antidepressants. A drug test will be presumed positive if any of the drugs listed are found. Presumed positives will be confirmed by a second test from the original urine sample. If the test is positive, the available evidence, including health history, will be used to determine the presence or absence of drug abuse by a college health officer. The School of Nursing will ensure confidentiality of results by making the information available only to the student and appropriate administrators.

Refusal

Refusal by a student to submit to testing will result in that student's dismissal from the School of Nursing.

Positive Results

Positive drug screens shall be reviewed by the Undergraduate Director. If the student tests positive for one or more of the above drugs and asserts that the positive test is a result of taking a drug prescribed to them by a health care provider, the Undergraduate Director will review, with the student, the actual prescription, amount taken daily, the time and amount of the last dose, and the reasons for the prescribed drug. Additionally, the student will be required to contact the prescriber and/or pharmacy and authorize release of medical information to indicate the illness for which the drug was prescribed, the length of time the student will have to take the drug, and other relevant information.

Reasonable Suspicion of Drug/Alcohol Use

In addition to the pre-clinical screening process for substance abuse, for the protection of patients, faculty, staff, and students, the School of Nursing has the right to require a student to submit to testing for substance abuse at the student's expense when a faculty member has reasonable cause to believe that a student is under the influence of alcohol and other drugs including:

1. Observable phenomena, such as direct observation of drug use or the physical symptoms or manifestations of being under the influence of a drug or alcohol, such as, but not limited to, slurred speech, impaired physical coordination, inappropriate comments or behaviors, pupillary changes, noticeable change in grooming habits or odor of alcohol or other drugs.
2. Abnormal conduct or erratic behavior, absenteeism, tardiness or deterioration in performance.
3. A report of drug use provided by credible sources.
4. Evidence of tampering with a drug test.
5. Information that the individual has caused or contributed to harm of self, visitors, other staff, or patient while under the influence of drugs.
6. Evidence of involvement in the use, possession, sale, solicitation or transfer of drugs. If a faculty member observes such behavior, and if such behavior is observed or validated by another faculty member or clinical agency staff member, the faculty member must excuse or remove the student from the educational or patient setting immediately and contact the School of Nursing Director in order to review the situation and authorize the faculty member to make arrangements for testing. The faculty member is to make arrangements to have the testing performed immediately. If a drug use/abuse incident occurs while on a clinical unit, the student will be responsible for obtaining transportation to the designated lab or other testing agency; the student will not be allowed to drive from the clinical facility. The student will be requested to sign an informed consent to be tested before the specimen is collected at the designated testing agency. The student's failure to consent to the substance abuse test shall result in immediate dismissal from the School of Nursing. (See procedure for positive screens above).

Confidentiality

The CHO (College Health Officer) will report all test results to the Director of the School of Nursing. The results will be maintained in a file in the Director's office. Confidentiality of test results will be maintained with only the Director, the appropriate university administrator, and the student having access to the results.

Readmission

To be considered for readmission, students who are dismissed from the nursing program due to a positive substance abuse screen must:

1. Submit a letter from a treatment agency verifying completion of a substance abuse treatment program.
2. Prior to readmission, submit to an unannounced substance abuse screening at the student's expense. A positive screen will result in ineligibility for readmission.
3. Submit to random drug tests as requested by the School of Nursing after readmission. A positive screen will result in permanent dismissal.

Clinical Dress Code

The professional appearance of our students should reflect a positive image of the School of Nursing. The following dress code applies in all clinical areas, except psychiatry and selected community experiences.*

1. Uniforms:

- A. All students must purchase the SON uniform: purple scrub top embroidered with the orange Clemson tiger paw, white slacks below ankle length; white, professional closed-toe shoes with solid white socks. White all-leather athletic shoes are acceptable.
- B. Uniforms should be clean, neat and wrinkle-free.
- C. Uniforms should be laundered after each clinical.
- D. Underwear should be white or flesh color without designs. No thong underwear is to be worn in the clinical setting.
- E. White or purple lab coats/jackets are the only addition to uniforms.

2. Identification (name) badges are considered part of the official uniform and are required of students in all clinical areas. **Students arriving to clinical without required identification will be dismissed and receive a "U" (Unsatisfactory) for the day defined as a 'Failure to be prepared for clinical'.**

3. Wrist watches with a second hand, professional pins, such as Sigma Theta Tau are considered a part of the dress code. Wedding bands and one pair of small pierced earring studs may be worn (no other body piercings should be visible, no other jewelry allowed including permanent jewelry). In Newborn Nursery, Labor/Delivery and Operating Room (OR), watches and other jewelry should be pinned to the pocket of scrub attire, if needed.

4. Hair Guidelines:

- A. Clean and well groomed.
- B. Hair should be kept away from the face/shoulders; and should not fall forward while providing care or other professional acts.
- C. Only "human" hair colors should be visible head/facial/body hair. No "fairy/shimmer" hair.
- D. Long hair will need to be pulled up into a ponytail or bun that is off the shoulders.
- E. No hair accessories, e.g. ribbons, yarn may be worn. Clips and hair pins allowed. Must be neutral in color and serve the purpose of keeping hair out of the face and off the shoulders.
- F. Facial hair, e.g. beards, mustache should be neatly trimmed.

5. Fingernails must be clean and not extend beyond fingertips. No nail polish, acrylic, gel or

- artificial fingernails may be worn in the clinical setting.
6. Make-up should be appropriate. No false eyelashes, perfume, or cologne should be worn.
 7. No gum, drinks, or food are allowed in clinical area.
 8. Students should refrain from smoking while wearing uniforms.
 9. One pair pierced earrings (no dangly earrings) in ears. No visible piercings will be permitted (i.e., tongue, eyebrow, nose, chin, lip, or otherwise). Clear spacers may be permitted at the discretion of the clinical instructor and if abides with the piercing policy of the clinical facility.
 10. Tattoos may be visible if the images or words do not convey violence, discrimination, profanity, or sexually explicit content. Tattoos containing such messages must be covered. Clemson University faculty and/or agency staff reserve the right to judge the appearance of visible tattoos.

*In Mental Health Nursing (NURS 4010), Community Health (NURS 4150), and Leadership/Management (NURS 4050), the clothing is to be in keeping with the policy of the institution.

*In Pediatrics (NURS 4110), students may wear printed scrub tops and coordinated uniform slacks or pants.

Statement of Unsafe Clinical Practice

Practice may be considered unsafe when a student fails to use the nursing process effectively by engaging in one or more of the following activities:

1. Failure to recognize the need for assistance when unprepared for nursing action.
2. Failure to take nursing action when such action is essential to the health and safety of the client.
3. Attending clinical laboratory while under the influence of alcohol or drugs.
4. Failure to recognize the influence of own attitudes and behavior on care of clients.
5. Lying or deliberately giving inaccurate information regarding nursing care.
6. Performing nursing activities which are detrimental to the health and safety of the client.
7. Failure to assume responsibility for completing nursing actions.

Guidelines for Evaluation of Student Clinical Performance

1. Students should expect to be provided with criteria for evaluation for each assignment which is to be graded.
2. Students should expect that faculty will collect and retain such evidence of student performance as is necessary for fair and accurate formative and summative evaluation.
3. Students should expect that faculty members will return clinical written work in such time to ensure their use in the evaluation process.
4. Students or faculty members may request validation from another faculty member of student performance when in doubt about whether the student is unsafe.

Transportation to the CU Nursing Building in Greenville

The CU Nursing Route, operated by Tiger Transit, connects Clemson University main campus from two locations (P-8 parking lot and Cherry Road at Bryan Circle) to the CU Nursing building located at 605 Grove Road, Greenville, SC. This route is tailored to nursing classes, sim labs, orientations, and exams scheduled at the CU Nursing building in Greenville. All students, faculty, staff, and guests of the CU Nursing program are encouraged to ride. We do not provide transportation for clinicals or practicums for any students but if you need assistance with transportation to the Greenville Memorial Hospital campus, please contact Mrs. Anna Claire Butler, Student Services Coordinator at 864-720-2054 or acbutle@clemson.edu. Note that routes are subject to cancellation based on ridership. Any changes will be updated on the CU Nursing website and communicated to you via email. The CU Nursing transit schedule and other important information can be found at: <https://www.clemson.edu/campus-life/parking/transit/campus-services/nursing-route.html>

Clinical Laboratory Transportation

Clinical laboratories for nursing courses are held in a variety of locations including area hospitals, health departments, child-care centers, rehabilitation centers, schools, and industries, as well as other settings. Students are required to provide their own transportation to and from clinical sites. Lack of transportation is not considered an acceptable reason for not attending clinical experiences.

Cancellation of Clinical Labs Due to Hazardous Driving Conditions

Clinical laboratories will be canceled when one of the following conditions exist:

- Clemson SON follows the Pickens County school system in decisions concerning school/clinical closing. If Pickens County schools are closed due to hazardous driving conditions, clinical labs are cancelled without penalty to the students. Also, if schools in the county/area of the clinical facility are closed due to hazardous driving conditions, clinical labs are cancelled without penalty to the students. In any case when clinical is cancelled, students may be required to do a case study or make up the time.
- If hazardous driving conditions result in delayed school openings in Pickens County or the county/area where the clinical facility is located, faculty need to come at the new time. For example, if clinical is scheduled to start at 0645, a 2-hour delay would start at 0845. If schools are delayed due to "cold" or reasons other than hazardous driving conditions, clinical should not be delayed.

If a 2-hour delay is announced, lead teachers whose courses have 6-hour clinicals will determine the best course of action for the day by contacting the Director of Undergraduate Programs to determine the continuity business plan. The lead teacher will notify affected clinical instructors whether to have students report at the new time or to plan to make up the lab.

Make-up options for missed clinicals include: (1) Making up the full clinical day later in the semester, the preferred option, if possible. (2) Implementing a useful alternate learning activity. Such an activity, if chosen, should include learning objectives, guided learning activity (e.g. Kaplan simulations, case studies, etc.), and should roughly reflect the number of hours missed.

Faculty who choose to use an alternate learning experience should identify the assignment early in the semester and have it ready for use as needed. (3) Scheduling a simulation in the Clinical Learning and Research Center/Skills Lab. This is an excellent option, but faculty must ensure that the lab is available, and that scheduled time works for all students.

In the event that questionable weather, e.g. freezing precipitation, on the evening before a morning clinical might create hazardous driving conditions, but no announcement has been made about school closings, the faculty should set up a "calling tree" and/or send an e-mail to instruct students that they should not come if the roads are unsafe where they live, regardless of closing decisions.

If a decision to close schools is made during the school day due to inclement weather creating hazardous driving conditions, students should be sent home as soon as that decision is made, due to safety considerations.

Faculty and students must always use their personal judgment when unforeseen weather conditions are encountered and must keep safety first and foremost. Students and faculty should listen to one of the following stations to obtain information on weather conditions and school closings:

Television

WYFF-TV (Greenville, Channel 4)
AM) WSPA-TV (Spartanburg, Channel 7)
FM) WLOS-TV (Asheville, Channel 13)
FM) WHNS-TV (Asheville, Channel 21)
100.5 FM)

Radio

WAHT (Clemson, 1560
WSBF (Clemson, 88.1
WESC (Greenville, 92.5
WSSL (Greenville,

WMYI (Greenville, 102.5 FM)

Social Media Policy

*Adapted from White Paper: A Nurse's Guide to the Use of Social Media;
2011 National Council of State Boards of Nursing*

- Awareness and caution are required to avoid inadvertently disclosing confidential or private information about patients. All Clemson University School of Nursing students are expected to comply with the following requirements related to the use of social media:
- First and foremost, nurses and nursing students must recognize that they have ethical and legal obligations to maintain patient privacy and confidentiality at all times.
- Students are strictly prohibited from transmitting by way of any electronic media any patient- related or facility related information and/or images. In addition, students are restricted from transmitting any information that may be reasonably anticipated to violate patient rights to confidentiality or privacy, or otherwise degrade or embarrass the patient.
- Do not share, post, or otherwise disseminate any information, including images, about a patient or information gained in the nurse-patient relationship or within your clinical facility with anyone.
- Do not identify patients by name or post or publish information that may lead to the identification of a patient. This includes any information about the patient: name, address, age, gender, diagnosis, room number, admission date, discharge date, date of birth or death, date of care, or anything else. **NO PATIENT OR FACILITY RELATED INFORMATION CAN BE POSTED ON SOCIAL MEDIA!!** Limiting access to postings through privacy settings is not sufficient to ensure privacy.
- Never refer to patients in a disparaging manner, even if the patient is not identified.
- Do not take photos or videos of patients on personal devices, including cell phones.
- Maintain professional boundaries in the use of electronic media. As with in-person relationships, the nurse has the obligation to establish, communicate and enforce professional boundaries with patients in the online environment. Use caution when having online social contact with patients or former patients. Online contact with patients or former patients blurs the distinction between a professional and personal relationship. The fact that a patient may initiate contact with the nurse does not permit the nurse to engage in a personal relationship with the patient.
- Do not post any information regarding work related issues. Do not even post seemingly innocuous information such as "It was a busy day". Such information could be used in a lawsuit to imply various things about the work environment.
- Promptly report any identified breach of confidentiality or privacy to your instructor and lead teacher.
- Be aware of and comply with facility policies regarding use of employer-owned computers, cameras and other electronic devices and use of personal devices in the work place.
- Do not make disparaging remarks about employers or co-workers. Do not make threatening, harassing, profane, obscene, sexually explicit, racially derogatory, homophobic or other offensive comments. **DO NOT POST ANY INFORMATION WITH REFERENCE TO YOUR SPECIFIC CLINICAL EXPERIENCE.**

- Do not post content or otherwise speak about employer or facility.
- **Summary of CU SON Social Media Policy: Do not post any clinical, patient, or facility related information on any social media. Doing so will result in disciplinary action, up to and including dismissal from the clinical, the SON and/or Clemson University.**

Policy for Use of Personal Digital Devices in the Clinical Area

- Personal digital devices (PDD's), including phones, tablets, laptops, or other digital devices, are to be used in the clinical areas only as approved in advance and directed by faculty. Their use is primarily to access clinical support applications that have been stored on the device. Use of portable electronic devices in clinical is regulated by the clinical agencies, local, state, and federal regulations and laws and by the School of Nursing. All students are fully responsible for following all regulations of the Health Insurance Portability and Accountability Act (HIPAA) guidelines and for following HIPAA guidelines when using their PPD's in the clinical or other settings.
- No personal health identifiers (PHI) can be entered into the device. All personal health identifiers must be removed from any patient data collected by students on PPD's. Students are fully responsible to ensure that they adhere to all HIPAA regulations at all times. This includes proper management of confidential client information.
- **All telephone and camera functions must be disabled during clinical** and lab sessions by placing devices in "Airplane" mode.
- With the exception of instructor approved activities, ALL PHONES WILL REMAIN ON AIRPLANE MODE in the clinical area. Students must adhere to professional standards for all communications, including maintaining confidentiality, proper conduct of communication, and communicating appropriate material.
- Using the device for personal, non-school related functions is strictly prohibited. **Inappropriate use or violation of HIPAA guidelines may result in dismissal from the clinical, the School of Nursing and/or Clemson University.** Inappropriate use includes making or receiving personal calls while in the clinical area, sending or receiving personal texts while in the clinical area, accessing any non-clinical related web-sites while in the clinical area, taking pictures during clinical, or recording any PHI on the device.
- Students should only use the personal digital device in areas designated by the instructor in compliance with institutional policy
- Infection control precautions must be maintained when using personal devices in patient care areas (See Personal Digital Device Infection Control below).
- All students will sign the CU SON electronic compliance form indicating that they have read and understood these policies. This form will be placed in each student's file.

Personal Digital Device Infection Control

- Wash hands before using handheld device.
- Do not handle device with contaminated gloves.
- Wipe down handheld device using solutions recommended by manufacturer and approved by the institution.
- Avoid placing device on surfaces that can possibly contaminate device, such as bedside

tables or patients' beds.

- Adhere to infection control policies at all times, especially while in isolation rooms.
- Keep in mind the risk for transmission of organisms is not only to your patients, but also to yourself and your family and friends.

Summary

- 1) Protected Health Information (PHI) **cannot** be entered into the digital device. All patient related information is protected.
- 2) Phones must be in Airplane mode while in clinical.
- 3) Pictures cannot be taken in the clinical setting.
- 4) The usage of personal cell phone functions, including personal text messaging, personal calls, or accessing non-clinically related websites is prohibited during clinical hours.
- 5) Cleaning of digital device must comply with the clinical organization's infection control policy and procedures. If the device becomes contaminated, it should be cleaned with the recommended disinfectant. If a patient is on isolation, insure that appropriate infection control measures are maintained. Hand hygiene is the best method of preventing transmission of disease.
- 6) **Inappropriate use of personal digital devices or violation of HIPAA guidelines may result in dismissal from the clinical, the School of Nursing and/or Clemson University.**

Identity Precautions

It is important to remember that information posted on YouTube, Facebook, Myspace, Twitter, etc. is available to everyone in the world who has internet access, including Clemson University faculty and staff and your potential employers. Students are urged to consider all possible implications of such postings on these and other internet networks. The best postings adhere to appropriate internet etiquette and portray a positive image that you would not hesitate to present to a potential employer

SECTION IV: SCHOOL OF NURSING FACILITIES, RESOURCES, & STUDENT ORGANIZATIONS

CBSHS Academic Advising Center

The CBSHS Academic Advising Center is located in 309 Edwards Hall. The Academic Advising Center services are available for a variety of services for students; however, the primary purpose is to provide students with essential academic advising services. The office is open Monday through Friday from 8:00 a.m. until 4:30 p.m. All nursing students are advised by professional academic advisors. Once nursing students enter their clinical semester, nursing students receive additional faculty group advising prior to registration.

Advisors are available by appointment and students may schedule appointments and view drop- in hours (if available) through CU Navigate (Clemson.campus.eab.com)

To find your specific academic advisor please visit: <https://www.clemson.edu/cbshs/students/advising/index.html>

Academic Advising Center CBSHS Director:

Mrs. Allysa
Sutton
allysas@clemson
.edu, 864-656-
5495

CBSHS Academic Advising Center provides the following services:

Pre-Registration Advising

The Academic Advising Center holds advising sessions prior to course registration for students with an advisor. Students are emailed and given a link to sign up for appointments in CU Navigate, the on-line advising appointment system. Students must attend their advising registration session to register for courses. Advising appointments are also available outside of pre-registration. Please always check CU Navigate for appointment availability.

Permission to Take Courses away from Clemson University

Students who wish to take a course at another institution must complete a "Request for Approval to Take a Course Elsewhere" form prior to enrolling in the course. The appropriate form is available at Clemson.edu/registrar/documents/credits-taken-elsewhere.pdf. Students must complete the form indicating the school name, course number and title. Your academic advisor will check the transfer credit database to verify that the course will transfer appropriately. If the course is not

listed on the database, students will be directed to see the evaluator in the department where the course is taught at Clemson for approval. Once the transfer approval is given, an advisor will sign the form and the student will email the completed form to ESSTranscripts@Clemson.edu. The form includes Clemson University rules and regulations that governs a student receiving credit for course work. Please note that the courses with an asterisk on the curriculum sheets may not be taken elsewhere or moved to another semester.

Dropping or Adding Classes

Students may use the online registration system to add or drop non-nursing classes during the registration period until the last day to add or drop classes as posted by the University Registrar's Office.

Scholarships

External scholarship opportunities, which are not a part of the University's Financial Aid program, are communicated to all nursing students via email as they become available.

Communicating with your Advisor

Advisors **do not** use g.clemson emails – please be sure to use the appropriate email address or you will not receive a response. Please communicate with your advisor kindly and professionally. Email is not to be used as text messages. Please also be aware of your time, place, and manner when communicating with your advisor. Advisors are a resource, and they want to help you succeed.

Joseph F. Sullivan Center

The Joseph F. Sullivan Center is operated by the College of Behavior, Social and Health Sciences. This Center provides unique opportunities for students to gain experience in providing health promotion, disease prevention and wellness services. Under the guidance of faculty, students plan and implement these services in a well-equipped, up-to-date health facility.

Clinical Learning Resource Center Overview

The Clinical Learning Resource Center is comprised of two integral components:

- The Learning Resource Center (LRC)
- The Clinical Learning Center Simulation Laboratory, also referred to as the Clinical Learning Center (CLC) or the Simulation Lab (Sim Lab)

Together, these spaces provide students with access to both self-directed learning resources and immersive, hands-on simulation experiences to support clinical skill development and academic success.

Guidelines for Clinical Learning Resource Center (CLRC) Use

To maintain a safe, professional, and functional environment, the following guidelines must be observed. Staff members are authorized to enforce these rules:

- Food and drink are permitted in the LRC and in the CLC main simulation lab area

- Food or drink is NOT allowed in simulation rooms or skills bays.
- Respectful behavior toward fellow users and staff is expected at all times.
- Maintain low noise levels. Cell phones are allowed in the LRC, but conversations must be taken outside so as not to disturb those who are studying.
- Cell Phones are NOT allowed in the Simulation Lab.
- Direct any issues or concerns to the simulation staff member or student worker on duty.
- Computers and other equipment are to be used for academic purposes only.
- Reference materials are for in-center use only and may not be checked out.
- Printing of standard sizes is available in the LRC via the self-service papercut system.
- Personal audio (music, podcasts, etc.) must be used with headphones in the LRC.
- The LRC is open to faculty, staff, and students in the College of Behavioral, Social, and Health Sciences.
- Repeated rule violations may result in the suspension or loss of LRC privileges.

Learning Resource Center (LRC)

The Learning Resource Center (LRC) offers Clemson Nursing students access to both individual and group study spaces, as well as a photocopier/scanner. There is an LRC located on the 4th floor of CU Nursing and in suite 203 of Edwards Hall.

Hours

Monday – Thursday, 8am-6pm; Friday, 8am-4:30pm

Note: Hours may vary during summer sessions. The Clinical Learning & Research Center (CLRC) is closed for all University staff holidays, and the schedule is subject to change. The LRC in Edwards Hall (main campus) is accessible by scanning your Clemson University Student ID. This LRC includes a makerspace lab for innovative solutions to healthcare challenges available to all students. A selection of reference materials, including textbooks, is available for in-house use on a first-come, first-served basis. These materials cannot be checked out.

Clinical Learning Center (CLC) Simulation Laboratory

Mission Statement

We believe that every individual participating in simulation activities is intelligent, capable, motivated to do their best, and committed to continuous improvement. Our mission is to provide nursing students and faculty with a state-of-the-art, research-driven clinical practice environment that:

- Fosters critical thinking
- Enhance clinical competency and confidence
- Promotes interdisciplinary collaboration
- Supports evidence-based nursing education

Core Values

We are guided by the following core values in all aspects of our simulation-based education and training:

1. Integrity

We uphold the highest standards of honesty, fairness, and ethical conduct. We commit to transparency regarding the limitations of simulation activities and honor the privacy and dignity of all participants.

2. Transparency

We follow INACSL and SSH standards and communicate the objectives of each simulation clearly.

3. Mutual Respect

We value the rights, dignity, and contributions of every individual. We practice empathy and compassion, foster diversity and inclusion, and ensure a safe and respectful environment for all participants.

4. Professionalism

We maintain the highest levels of competence, conduct, and continuous improvement. We are dedicated to excellence in nursing simulation and uphold professional standards in all our activities.

5. Accountability

We strive for accuracy, reliability, and reflective practice in every aspect of simulation-based education. Everyone is responsible for their own actions, decisions, or errors

6. Results Orientation

Our simulation practices are focused on measurable improvements in learning, performance, and safety to improve patient care.

To put these values into practice, we:

- Integrate ethical considerations into the design and delivery of all simulation activities
- Provide ongoing faculty development to ensure professionalism and accountability
- Conduct evaluations and collect data to assess outcomes and continuously improve results
- Create inclusive environments where all learners feel respected and supported
- Ensure transparency in communication, objectives, and expectations
- Prioritize learner safety and psychological well-being throughout the simulation process

Simulation Lab Hours

Lab and office hours vary each academic semester and are based on course needs. Refer to the posted schedule for current availability.

Simulation Lab Consents and Expectations

The Simulation Laboratory utilizes videography, recording, and photography for educational purposes, including livestreaming, debriefing, competency review, and training. Students must sign the Authorization for Use of Photographic Image/Video/Voice Recording consent form (located at the end of this handbook).

Additionally, all students must sign the **Simulation Lab Agreement** (located at the end of this handbook), which outlines the following expectations:

- Maintain **confidentiality** of all simulation scenarios and related activities.
- Use **equipment and supplies responsibly and professionally**.
- Follow **all safety protocols**.
- **Cell phones are not permitted** in the lab.
- Demonstrate **professionalism** in attire, communication, and clinical behavior.
- **Fidelity** (realism) of simulation scenarios must always be respected.

Students with questions or concerns regarding these policies or those requesting simulation accommodation related to the consent forms or otherwise should contact the **Associate Director of Simulation**. The School of Nursing is committed to supporting individual needs and will coordinate with University leadership as appropriate.

Associate Director of Simulation

Kimberly Kamp Hill

kkamp@clermson.edu 864-656-1878

203A Edwards Hall, Clemson SC OR 363 CU Nursing Greenville, SC

Open Lab Skills Practice

Scheduled practice labs are available for the following courses:

- NURS 3101: Health Assessment
- NURS 3121: Med-Surg I: Foundations of Nursing
- NURS 3031: Med-Surg II: Nursing of Adults

Practice lab sessions are coordinated by the Simulation Lab Manager at your assigned location (CU Nursing or Edwards Hall). Dates and times are provided in each course's lab syllabus. **Space is limited, and sign-up is required.**

While every effort is made to ensure adequate practice time prior to a skill checkoff, availability may be affected by factors such as University closures, weather events, or holidays.

Students struggling with a skill are encouraged to contact their clinical instructor, the lab manager, or simulation staff for assistance. **A proper Clemson University Nursing uniform is required for all practice, remediation, and retesting sessions.**

Sigma Theta Tau, Gamma Mu Chapter

Sigma Theta Tau is the international honor society of nursing. For more than 100 years, Sigma has been recognizing and celebrating excellence in scholarship, leadership, and service within nursing and midwifery. Founded in 1922, our organization has grown to more than 600 chapters, in over 100 countries around the world. Sigma members are leaders at all levels of the healthcare industry. The purpose of Sigma is to:

1. Recognize superior achievements
2. Recognize and develop leadership qualities
3. Foster high professional standards
4. Encourage creative work
5. Strengthen commitment to the ideals and purpose of the profession.

The Gamma Mu Chapter was installed at Clemson University College of Nursing in the Spring of 1978. Gamma Mu is a regional community of nurses and nursing students committed to making a difference through fostering meaningful connection, professional leadership, and collaborative service. Our chapter's mission is to empower current and future nurses to achieve excellence in their professional practice.

Sigma extends memberships to students who have demonstrated superior academic achievement, academic integrity, and professional leadership potential and to nurse leader candidates exhibiting exceptional achievements in nursing. Chapter eligibility screening is carried out over the summer semester, and eligible candidates are notified by the Faculty Counselors. Upon acceptance and payment of membership dues, new members are inducted into the Chapter each Fall.

Qualifications for Membership:

1. Candidates shall have demonstrated superior scholastic achievement, evidence of professional leadership potential and/or marked achievement in the field of nursing.
2. Candidates shall be elected from students enrolled in bachelor and masters programs which have been accredited by the nationally recognized accrediting body for professional nursing, and post-masters, doctoral and post-doctoral programs.

Bachelor of Science Degree Program:

- a. Students shall have a GPA of at least 3.5 on a four-point scale
- b. Have comp one-half of the core nursing curriculum
- c. RN-BSN students must have completed 12 credit hours
- d. The number of students from any one class shall not exceed one-third of the total number expected to graduate from that class
- e. Meet expectation of academic integrity

South Carolina Student Nurses' Association (SNA) at Clemson University

All students enrolled in the School of Nursing who have not yet completed a Bachelor of Science Degree in Nursing are eligible for membership in the Student Nurses' Association. This organization serves to promote career exploration through programs featuring speakers from various specialties in nursing. It also strives to keep students informed about a variety of issues currently affecting nursing by means of program meetings and participation in the state level organization, Student Nurses' Association of South Carolina.

A number of students from Clemson University have held offices in the state SNA in recent years. Membership in SNA is voluntary and can be attained upon payment of a nominal membership fee. Forms may be obtained from the SNA faculty advisor or from any SNA member.

Student Representatives on School Program Committees

In the beginning of each year, students are elected to serve as representatives of their class and cohort on the School of Nursing Program Advisory Committee. Student input is one way the faculty learns about concerns and issues in the school. It is important to elect representatives who will agree to attend designated meetings for this process to take place.

BS Student Program Committee: At least two students per class.

Student Class Representatives

The School of Nursing has a process of receiving student feedback through end-of-the-semester Nursing Class Representatives meetings. Each of the SON classes/cohorts select up to two representatives to gather feedback from their classmates for purposes of sharing your experience for academic quality control. Feedback can be gathered through email, Google forms, Qualtrics, or other means. At the meeting, the SON administration asks that representatives gather and share the positive things you have experienced as well to identify areas for improvement. The feedback received has promoted real changes in the past. More information will be shared in the first semester NURS courses.

SECTION V: GRADUATION INFORMATION

National Council Licensure Examination for Registered Nurses (NCLEX-RN)

All graduates of nursing programs are required to pass the NCLEX-RN in order to obtain a license to practice nursing and to use the title "R.N.". The examination is the same in each state and is offered on computer through various testing facilities in the state. Application materials are available online for each state board of nursing. Seniors in the BS-T cohort should submit the required materials to Mrs. Robin Metler-Atkinson (metler@clemson.edu) (408 Edwards Hall).

Seniors in the BS-A cohort should submit required materials to Mrs. Anna Claire Butler (acbutle@clemson.edu) (461 CU Nursing), and the Seniors in the ASD cohort should submit required materials to Ms. Cynthia Mihalchick (mihalch@clemson.edu) (465 CU Nursing). Students seeking licensure outside South Carolina need to include the mailer with sufficient postage. Each Board of Nursing determines the applicant's eligibility to take NCLEX. Applicants who have any misdemeanors or criminal records should seek consultation of the Board of Nursing several months before the application deadline. All graduate nurses are personally notified of their performance on the NCLEX-RN by the State Board of Nursing in the state where they took the examination. This information is reported as either "pass" or "fail." No individual scores are given to anyone. Successful candidates are listed as registered nurses on the state board website. South Carolina is a member of the RN Compact. Nurses with a compact license may practice in any compact state. Some states, such as Georgia for example, are not members of the compact so registered nurses must obtain a Georgia license to practice in that state.

NOTE: THE INDIVIDUAL STUDENT IS RESPONSIBLE FOR COMPLETING THE APPLICATION PROCESS AND MEETING ALL DEADLINES. Practicing without a valid license is a serious offense.

Pins for Professional Convocation

Early in the semester, an information e-mail will be sent to graduating seniors, in which students will be able to order Clemson Nursing pins online. A realistic time for the students to submit their pin order is listed online, and if this date is not honored then there is no guarantee the pins can be completed on time. The School of Nursing will assist past graduates in reordering pins, if they should need to do so. At the time of graduation, the School of Nursing holds Professional Convocation to honor its graduates and to welcome new graduates into the profession. Students completing the Master of Science degree in Nursing will receive their master's hoods as part of the ceremony. Baccalaureate graduates will receive the school pin. Clemson School of Nursing does not pay for students' pins. Students can still participate in ceremony without purchasing a pin.

Program Pin and Cap

The School of Nursing pin was designed by Dean Emerita Geraldine Labecki and the first graduating class of the Baccalaureate Degree Program in Nursing. This class consisted of three graduates who completed their course of study in 1972. You receive the School of Nursing pin at the School of Nursing Convocation. Your pin is worn as part of your official uniform whenever you are engaged in nursing practice.

GOLD -- Stands for worthiness

BLUE -- Stands for truth and constancy

THE SCROLL (BOOK) -- Symbolizes the search for knowledge based on nursing practice

THE SEAL -- Is the University Seal with the state's symbol, the palmetto, in the center

Clemson University Baccalaureate Cap

(Can be ordered through SNA). The cap was also designed by Dean Emerita Geraldine Labecki and the first graduating class of 1972.

The three pleats in the back represent the three graduates of this class.

The University Logo in gold metal now replaces an original cloth "C.U." which was made of gold and purple thread.

The Logo pin is to be worn on the left wing (corner) of the cap, 1/2 inch from the upper edge.

School of Nursing Estimated Expenses

- PPD – Check with your doctor or clinic for cost
- BLS/CPR for Healthcare Providers - www.heart.org (American Heart Association) for cost
- Malpractice Insurance - Offered by NSO at www.NSO.com, approx. \$42
- Hepatitis B – Check with your healthcare provider for cost
- Health and Accident Insurance - Check with your family's health insurance or student health insurance for cost
- Background Check – www.SRandI.com at \$35
- Health Assessment – Check with doctor or health professional
- Transportation to and from clinical sites

Approximate Graduating Student Expenses estimates*

• NCLEX Exam Application Fee	\$200.00
• Licensure Fee (South Carolina)	\$97.00
• Criminal History Background Check (South Carolina)	\$54.25
• School of Nursing Pin (optional)	\$45.00 - \$199.00
• University Ring (optional)	\$406.18-\$1613.26
• Cap/Gown/Tassel (if ordered on time)	\$29.99+\$6 shipping fee

*Please be aware that these are the estimated costs, subject to change.

SECTION VI: STUDENT FORMS

Understanding of Alcohol and Drug Policy & Permission for Drug Screening

I have read and understand the Alcohol and Drug policy and agree to the drug screen guidelines.

I hereby release the designated testing agency and its director, Clemson University, the School of Nursing and faculty from any claim in connection with the drug screening guidelines. I understand that in the event any legal action be taken as a result of the drug screening guidelines, confidentiality may no longer be maintained. I further understand that I may be subject to drug tests while enrolled in the School of Nursing. A positive drug test or refusal to submit to testing will result in dismissal from the School of Nursing

Signature

Print Name

Date _____

Approved by SON Faculty September 2005

School of Nursing Handbook

I have read the student handbook and understand the School of Nursing policies.

Signature

Print Name

Date _____

Nursing Student Acknowledgement of Policies and Expectations

- I must **pass all nursing and other science courses with a minimum grade of “C”** or better for progression to the next level.
- I must **maintain a grade point ratio (GPR) of 2.5** or above for my overall courses as well as my required nursing courses to remain in the nursing curriculum. If my overall GPR or Nursing GPR falls below 2.5, I will no longer be eligible to continue in the nursing curriculum.
- I must **maintain full time progress with a GPR of 2.5** or above to guarantee my space in nursing courses. Otherwise, I am not guaranteed a place in the remaining upper division nursing courses. If I am eligible to reenroll, I will be permitted to register in courses as space is available. (Students electing to study abroad for a semester during freshman or sophomore year will remain in the full-time cohort.)
- I may **repeat one nursing (NURS) course only**. Withdrawing with a “W” from the course or applying Academic Forgiveness counts as an attempt. If I fail a second nursing course, I am not eligible to continue in nursing. If I earn D’s in Pathophysiology and Pharmacology, I may be eligible to retake both courses concurrently with prior approval from the School of Nursing.
- I must **pass the didactic and clinical** components to pass all clinical courses.
- A criminal background check is required before entering clinical courses and a negative result is expected. I understand that my clinical placement and/or licensure may be affected by information revealed through a criminal background check.
- I must submit to a **drug test** prior to any clinical. If I refuse to submit to drug testing, I will be dismissed from the School of Nursing. If I have a positive result on the drug test, I will be suspended from the School of Nursing. (See Undergraduate Handbook for requirements for readmission after a positive drug screen).
- I must **satisfy all clinical requirements** prior to any clinical. **If I miss the deadline, I will be dropped from clinical courses.** All documents should be submitted as a package.
- I am required to participate in the **Supplemental Testing (ST)**. **I must pass all required ST in order to progress** to the next level of courses. I will receive an **incomplete in the course in which I did not pass the ST**, which will be converted to my course grade when I have passed the ST.
- I understand that if I have been counseled or disciplined for chemical, mental or physical impairment, while in school, or ever been convicted of a crime, I may be required to report it to the State Board of Nursing when applying for licensure.
- I understand that I will have the opportunity during the sophomore 1 semester to provide a **cohort preference** to aid in determining the cohort placement for clinical courses and experience. I understand that all final decisions for cohort placement are determined by the School of Nursing.
- I understand that due to the challenging nature of the nursing program, the rigorous coursework, and the rigid curriculum path, students in need of accommodations are strongly encouraged to reach out to **Student Accessibility Services (SAS)** as soon as possible to ensure timely implementation of approved accommodations. All student accommodations are initiated through the SAS process. They are not initiated by individual departments, programs, or faculty. SAS is located on the second floor of the Academic Success Center in suite 239.
- I understand that the Nursing Undergraduate Handbook contains information for which I am held accountable and that I must review the Handbook at the beginning of each academic year. I understand that the policies set forth in the Handbook are binding and that breach of these policies can have consequences ranging from a written warning to dismissal from the program. I have read and understand this School of Nursing Contract and I agree to abide by the terms therein.

Student’s Full Name (please print)

CU ID Number

Student Signature

Date

Personal Health History

PLEASE KEEP COPIES OF ALL HEALTH INFORMATION FOR YOUR OWN RECORDS CLEMSON UNIVERSITY

Clemson School of Nursing

This health information will be kept confidential and handled only by appropriate personnel in the School of Nursing.
To be completed by student. Please print or type.

Name: _____ COHORT _____

Permanent Address: _____ City _____

State _____ Zip _____ CUID# C _____ Last 5 Digits of SS _____

Date of Birth: _____ Cell Phone: _____ Alternate Phone: _____

Clemson E-mail Address: _____

Emergency Contact: _____ Relationship to contact: _____

Emergency Contact Address: _____ Phone # of contact: _____

What High School did you attend? _____

What is your city of birth and hometown? _____

General Health Information:

Date of last physical examination: _____

Any medication allergies (hyper-sensitivities, allergies, upset stomach, hives, rash, etc.):

Med: _____ Type reaction: _____ Med: _____ Type reaction: _____

Please indicate existing conditions which might impair or affect your functioning in the health care setting or the safety of patients /clients.

____Hearing or vision impairment ____Heart condition ____Diabetes ____Seizure disorder/fainting spells

____Physical limitations ____Latex allergy ____Acute infection ____Any chronic disease

____Emotional problems ____Other: Please specify _____

Please list any drugs (Prescription and Over-the Counter (OTC) that you use.

Name of drug: _____ Frequency of Use: _____

Name of drug: _____ Frequency of Use: _____

Name of drug: _____ Frequency of Use: _____

Essential Functions for Nursing Students

ISSUE	STANDARD	EXAMPLES
Critical Thinking	Critical thinking ability sufficient for clinical judgment.	Identify cause-effect relationships; accurately calculate medication dosages. Assemble equipment in sequence for safe use; maintain aseptic environment.
Interpersonal	Interpersonal abilities sufficient to interact with individuals/groups from various social, emotional, cultural, & intellectual backgrounds.	Establish and maintain supportive relationships with patients and other health care providers.
Communication	Communication abilities sufficient for interaction in verbal and written form.	Count aloud and document sponges, instruments, sharps, etc.
Mobility	Physical abilities sufficient to move from room to room and maneuver in small spaces.	Ability to lift, position, push, or transfer patients. Move around in treatment areas; administer CPR. Push/pull or move/lift equipment/supplies (up to 25 pounds). Ability to reach, stoop, bend, kneel, and crouch. Prolonged standing/walking.
Motor Skills	Gross & fine motor abilities sufficient to provide safe & effective care.	Calibrate and use equipment; position patients; assist patients in and out of bed. Use coordinated finger and hand movements.
Hearing	Auditory ability sufficient to monitor and assess health.	Hears monitor alarm, emergency signals, auscultatory sounds, cries for help, voices under protective garb.
Visual	Near/far visual acuity. Sufficient for assessment, & implementation.	Observe patients' responses; reads patients' care plans, consents; gauges, labels, digital printouts, & computer screens.
Tactile	Tactile ability sufficient for assessment of physical health status.	Performs palpation (take a pulse & perceive temperature) &/or those related to therapeutic intervention, e.g. catheter insertion.
Smell	Olfactory senses sufficient for maintaining patient safety	Distinguish smells that are contributory to assessing and/or maintaining patient's health status, e.g. smell fire.
Self-Care	Ability to present professional appearance, maintain own health and not place patients in jeopardy.	Implement universal precautions. Use good personal hygiene
Environment	Ability to work in various health care settings.	Work in environment with temperature changes, frequent contact with liquids, sufficient noise to cause distraction, and other hazards. Implement universal precautions with variations.

Check list of Essential Functions I have reviewed and understand the minimum essential functions necessary for nursing.

Demonstration of one or more of these core standards may be required. (**please specify*)

I can meet these requirements.

I do not meet these requirements.*

I am capable of meeting these requirements with the following accommodations:*

**Critical Thinking,
Interpersonal &
Communication
Mobility & Motor
Skills
Hearing & Visual
Tactile & Smell
Self-Care
Environment**

*Indicates awareness of applicant to make appointment with Disability Services at 656-6848 (voice/TTY) if accommodations are required to meet Essential Requirements of Nursing Students. I, the undersigned, do hereby testify that I have read and understand the Essential Functions for Nursing Students required for admission to Nursing and that the above statements, as indicated, are true.

Student's Signature _____ Date _____ Telephone Number _____

Simulation Lab Agreement

To maximize the value of the lab experience for all CUSON students participating in lab activities, it is essential that each student uphold the integrity of the lab experience. To achieve this, students must read and agree to the following before participating in any lab-related activity:

Content: I agree not to divulge any content covered in Sim Lab to any other student, including those in other sections of the same course or students enrolled in any nursing course. This includes but is not limited to Sim Lab manual materials, simulation scenarios, games, quizzes, skills check-off, or any other activities and content covered during time in the lab. The material is the intellectual property of Clemson University School of Nursing, and violating the confidentiality agreement constitutes a breach of the Clemson University School of Nursing's academic integrity policy and will be addressed according to policy and procedure.

Materials/Supplies: I understand that all medications and IV fluids are simulated, not for human consumption, and could cause serious harm if ingested. I understand that medical supplies like syringes, IV catheters, and sutures may be expired or intended for simulation only, and I agree to never practice on myself or another student. I agree to utilize all equipment in the simulation lab with professionalism, integrity and solely for its intended purpose. I will notify the simulation team if additional supplies are needed or if there is a problem with any equipment or supplies used in the lab. I understand equipment and supplies are the lab's property and should not be removed without permission from the simulation team and formal sign-out on the Google form. I acknowledge that I am responsible for tidying up anything used in the simulation lab space and will leave it ready for the following user.

Safety: I agree to strictly adhere to all lab safety protocols, including, but not limited to, hand hygiene, properly engaging sharp safety devices, utilizing sharps disposal, safe patient handling, infection control, and maintaining physical and psychological safety for all simulation lab occupants.

Phones: I agree to keep my phone and computer put away during the duration of my time in the Sim Lab and/or Classroom areas unless instructed otherwise by the nursing faculty. I understand that if I am instructed/permitted/allowed by faculty to use my phone and/or computer, tablet, or electronic device during lab, these devices may only be used for classroom-related activities and under no circumstances may be used to take photos or record.

Professionalism/Fidelity: Students of Clemson University School of Nursing are always expected to demonstrate professional conduct, which includes the clinical, classroom, lab, and virtual settings. I understand that the simulation lab is a clinical area and therefore requires students to comply with the Dress Code indicated in the School of Nursing Student Handbook for all lab, simulation, activities, practice, and remediation encounters. (Students should reference the handbook and/or course lead faculty for specifics of the Dress Code.)

I agree to maintain a professional bedside manner, including respectful communication, a positive attitude, and absolutely no vulgar language.

I agree to maintain simulation fidelity (the extent to which the simulation experience depicts reality) not to distract other learners or impact simulation quality.

This is in addition to the lead faculty's expectations and syllabus.

Violation of any of the above could result in lab dismissal, formal write-up, "Unsatisfactory," or other disciplinary action in accordance with the Clemson School of Nursing Student Handbook.

Student Signature _____

Date _____ Created by SON July 2023

Authorization for Use of Photographic/Image/Video/Voice Recording

Clemson University
Authorization for Use of Photographic/image/Video/Voice Recording

Event: School of Nursing Simulation

Organization Name: Clemson University School of Nursing (hereinafter "SON")

Clemson University Contact: SON Clinical Learning Resource Center at 656-5477

Event Description: The SON uses audiovisual recording of healthcare simulations of nursing students as a vital way for students to learn and collaborate. Students simulate in a group and are recorded. While 1-4 learners may be doing the high-fidelity patient simulation, the remaining students watch live and evaluate the learner's performance and participate in a guided debriefing with the group. Recordings of these simulations may be viewed by the student, their own clinical group, other members of the class, their instructor and/or between instructors at SON. The playback of audio-visual recordings of simulation helps learners gain a "birds-eye" perspective of the simulated scenario they just experienced or watched and provides an expanded understanding of how to provide effective patient care in various situations. Simulation is vital to helping students acquire confidence and skills necessary to the nursing profession. Therefore, this is a required part of the SON program.

Typically, the sharing of simulation recordings is for educational, program evaluation or accreditation purposes. SON may also use photographs or still images of the simulation process on the Clemson University website, social media sites, or in other online or hard copy materials to describe the simulation process to prospective students, parents and others.

By signing below, you grant Clemson University permission to take audiovisual recordings and/or photographs, still shots or electronic images of you participating in the SON simulation program and to share those materials with others. If you have questions about the simulation program, please contact the SON Clinical Learning Resource Center at 656-5477.

PLEASE READ THIS RELEASE CAREFULLY. This Release affects the rights you may have concerning the use by Clemson University, its representatives and employees and each of their respective successors, assigns and licensees (collectively, "Clemson University") of any photographs, video or images taken of you during the Program identified above.

In consideration for my participation in the above referenced Program at Clemson University, I, hereby grant Clemson University the right to create and capture audiovisual, audio-only, visual-only, and literary works, including the production of video and/or audio tapes, photographs, films, and/or recordings of and from me and/or my performance (the "Content") by any method of recording. I hereby irrevocably and unconditionally grant to Clemson University the right to use (or allow or license others the right to use) the Content, my name, likeness and biographical information as follows:

1. To copy, reproduce, distribute, modify, display and perform.
2. To use in composite or modified forms in any media, now known or later developed, including but not limited to publications, newspapers, television, radio, soundtrack recording, motion picture, filmstrip, still photograph, the Internet, the World Wide Web, or any transcript.
3. For any purpose throughout the world and in perpetuity, including by not limited to education, program assessment, accreditation, research, trade, advertising, and promotion.

Clemson University shall be the exclusive owner of all copyrights and other rights in and to such Content, which shall be deemed a work-made-for-hire specifically ordered and/or commissioned by Clemson University. Without limiting the generality of the foregoing, Clemson University shall have the right to add to, subtract from, create derivative works based on, change, revise, rearrange or otherwise edit the Content. I hereby waive any "moral rights" I may have in or to the Appearance.

Clemson University is not obligated to use any of the rights granted by me under this Agreement, but I agree that Clemson University may do so without any payment to myself or any other person or entity. This is a non-union agreement. I acknowledge and agree that the production of the Content hereunder shall not be subject to the terms of any collective bargaining agreement. I waive the right to inspect or approve uses of the Content and these images, recordings and written copies of works featuring me and/or my performance,

To the maximum extent permitted by law, I hereby release Clemson University, its successors, assignees and licensees, and each of their respective parents, subsidiaries and affiliated companies (all such individuals and entities collectively referred to as the "Released Parties") from any claim of any kind or nature whatsoever arising from the use of the Content or my involvement in the Program including, without limitation, any and all claims, demands, or liabilities for invasion of privacy, infringement of my right of publicity, defamation (including libel and slander) and any other personal and/or property rights (collectively, the "Released Matters"). I intend and agree that this Release shall be effective as a full and final accord and satisfaction and general release of and from all Released Matters. In connection with this

Name of Student (handwritten): _____

CUID Number: _____

Student Signature

Date