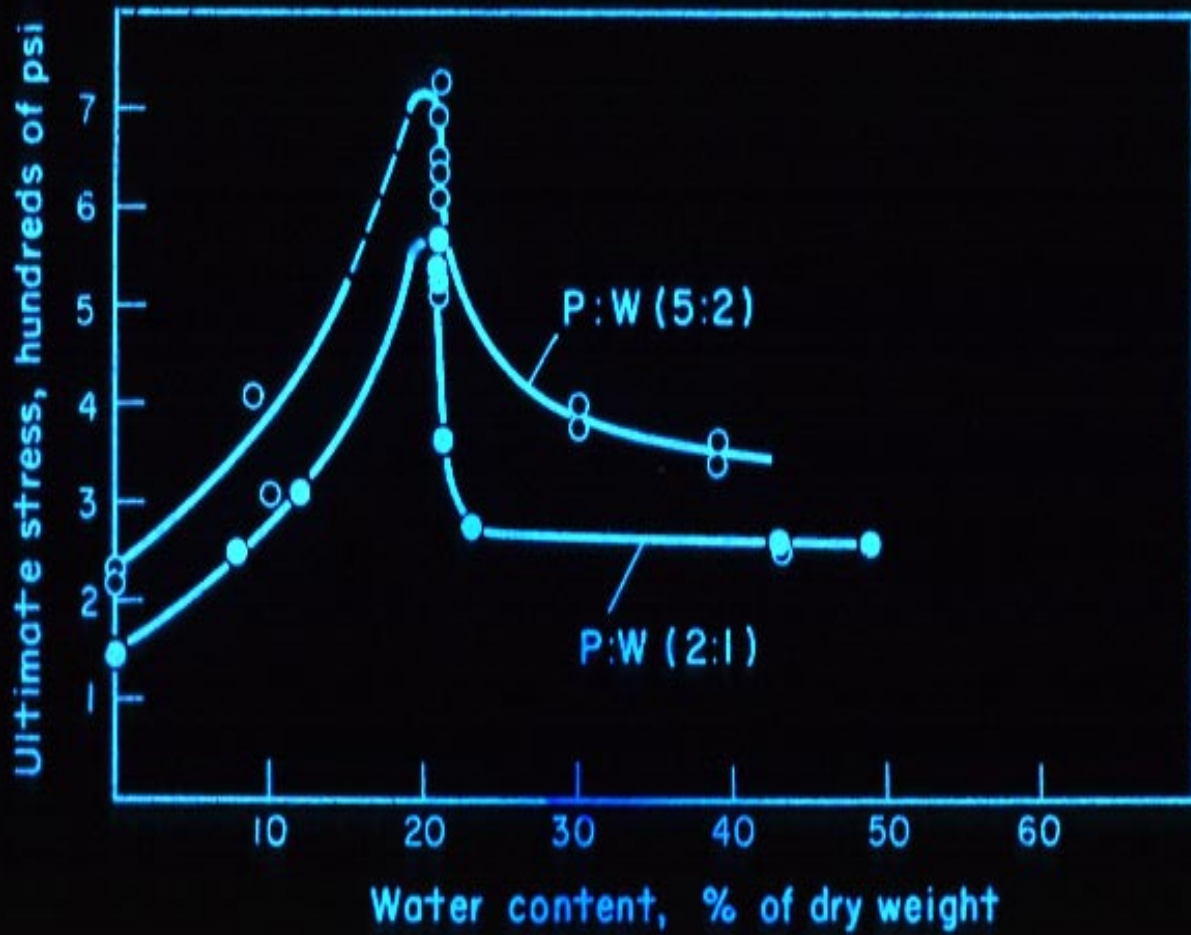
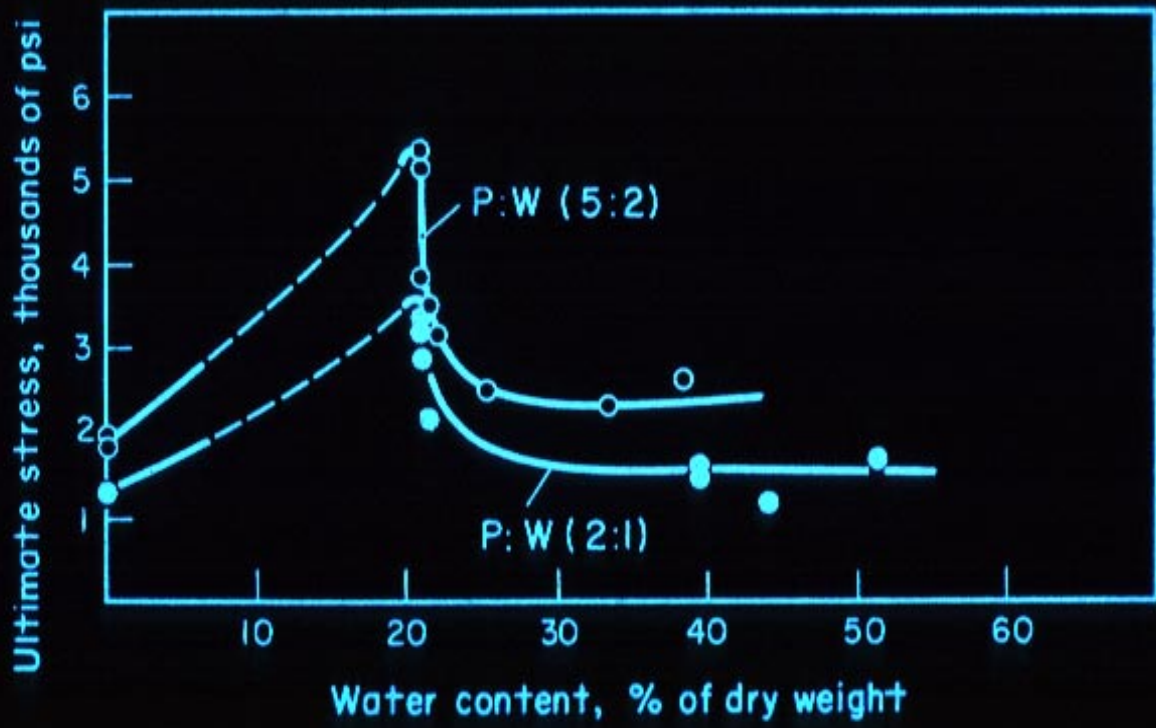


Fig. 13. Maximum strain distribution for various activities.





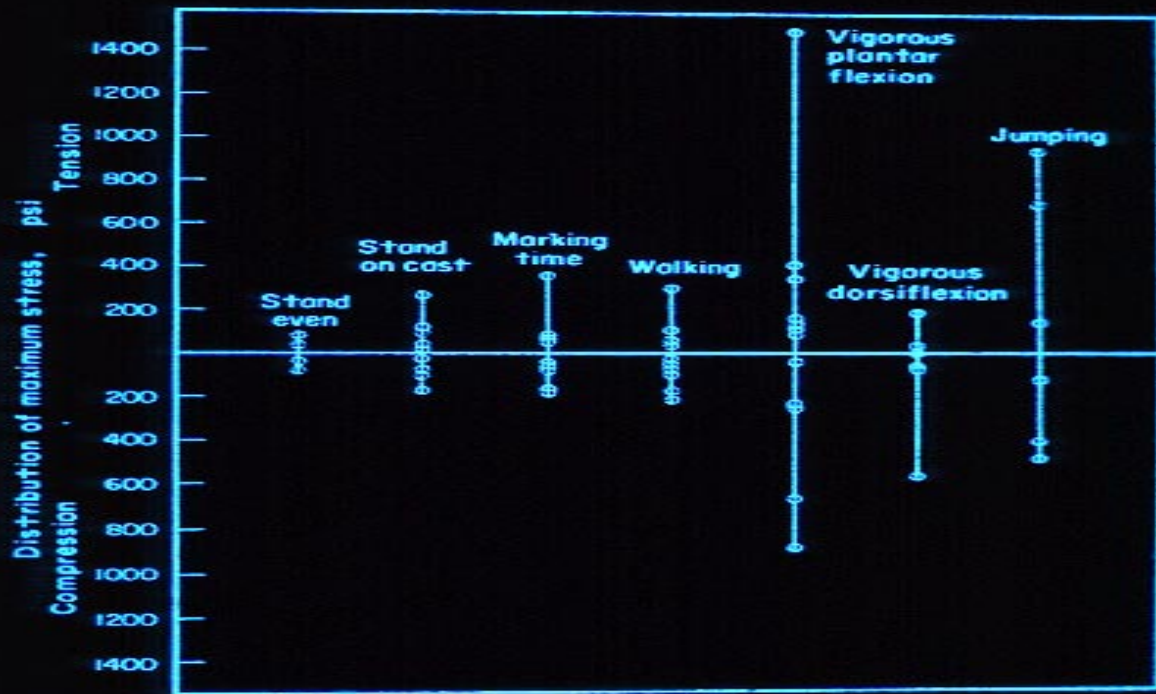


Fig. 14. Corresponding stress distribution for various activities.

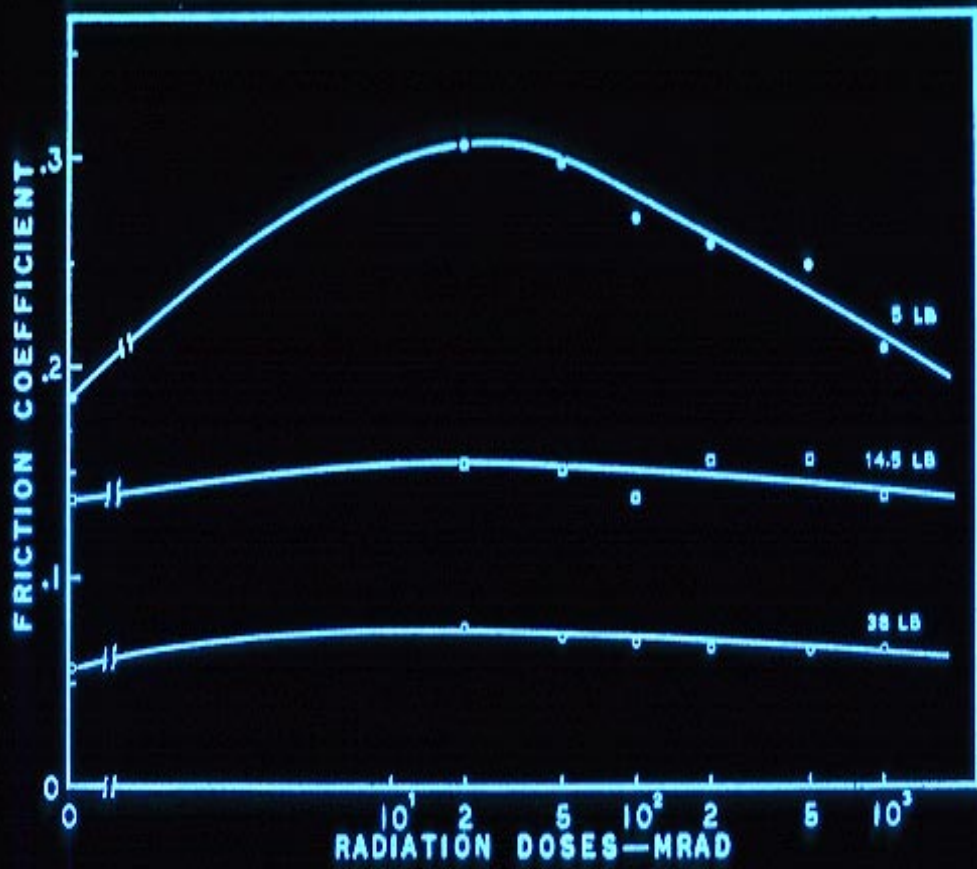


Fig. 1. Variation of friction coefficient with load and irradiation for VHMWPE.



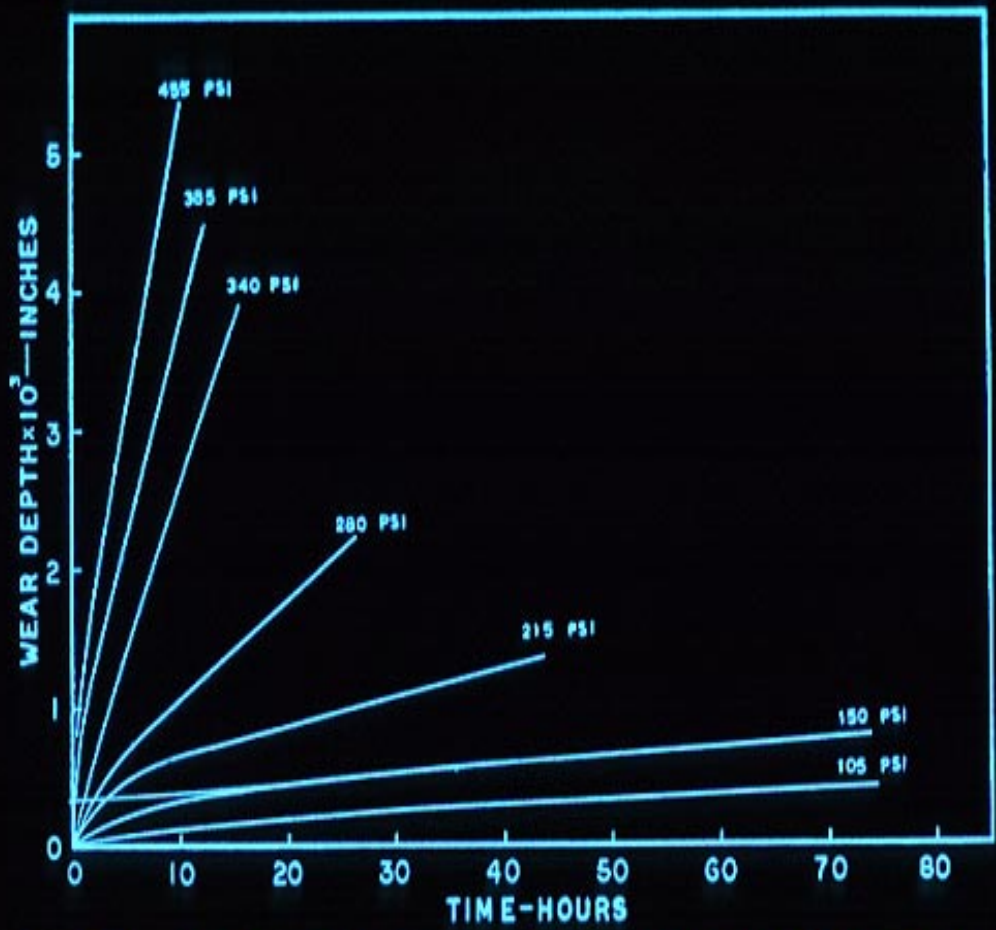


Fig. 2. Wear depth vs. time for unirradiated VHMWPE at different pressures.

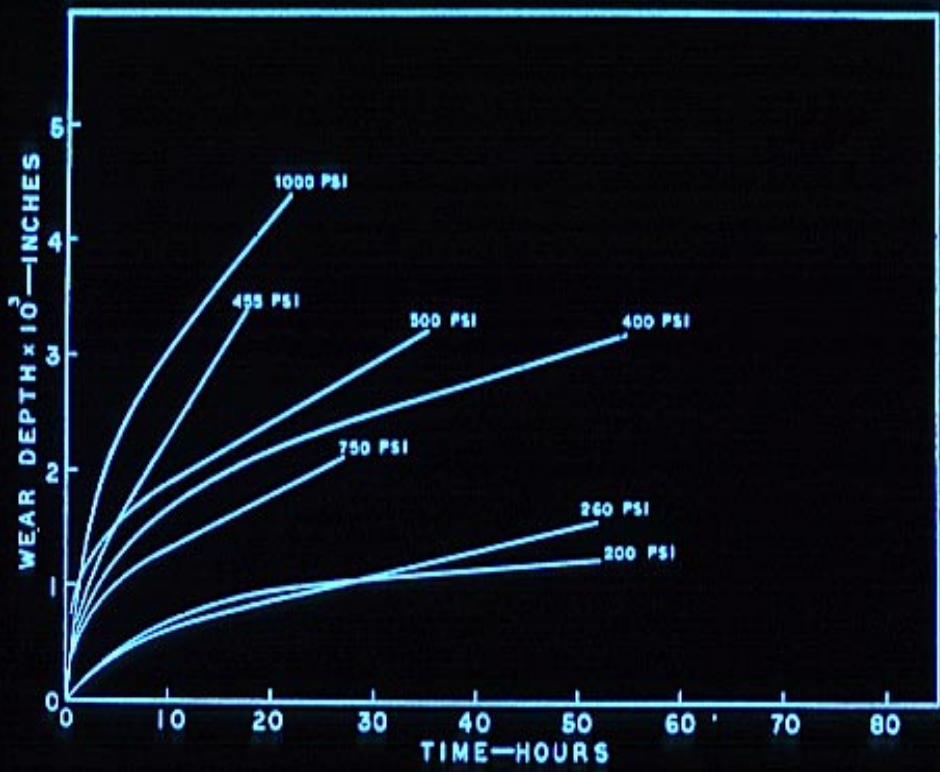


Fig. 3. Wear depth vs. time for 100 MRad sample of VHMWPE at different pressures.



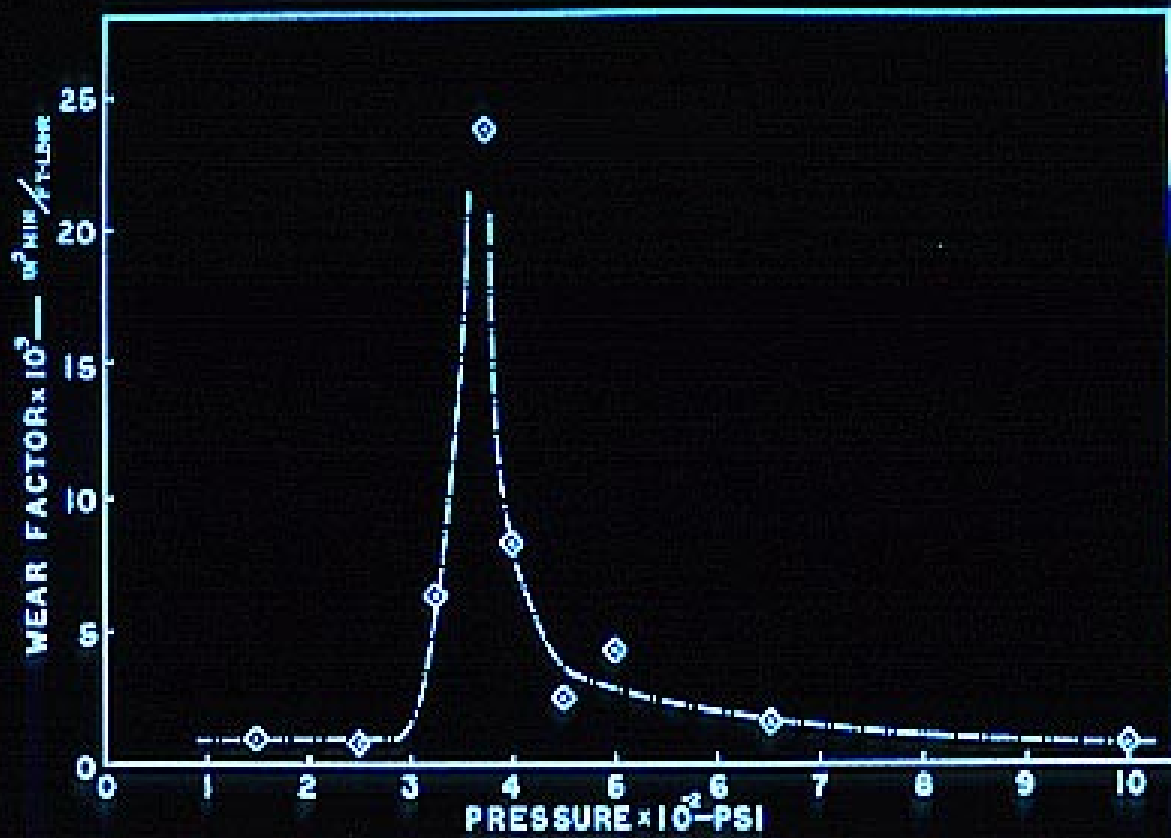


Fig. 1. Wear data for VHMWPE irradiated to 1000 Mrad.

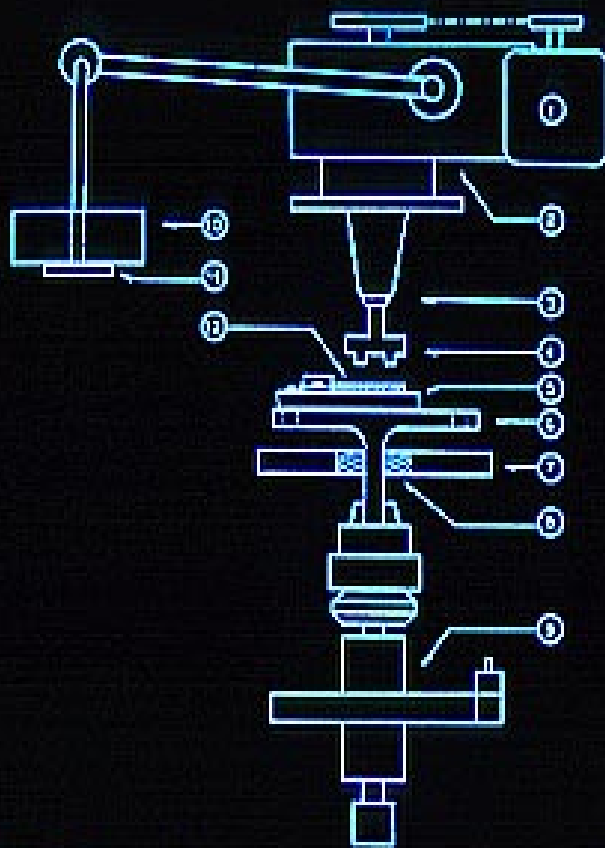


Fig. 1. Thrust-washer type wear testing machine. (1) motor, (2) drill press, (3) collet, (4) counterface, (5) specimen holder, (6) specimen-holder base plate, (7) holding plate of anti-friction bearing, (8) anti-friction bearing, (9) torque meter, (10) dead weight, (11) weight hanger, (12) polymer specimen.

POLYETHYLENE BEARINGS

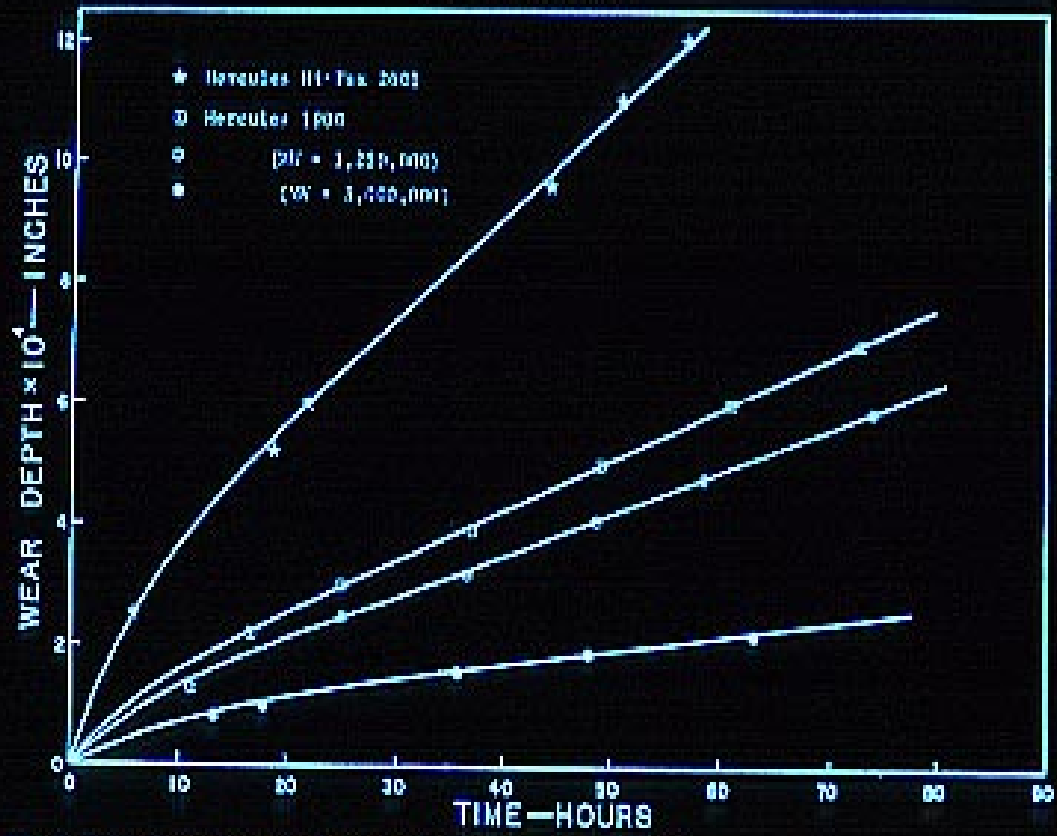


Fig. 2. Wear curves for polyethylenes of different molecular weight.