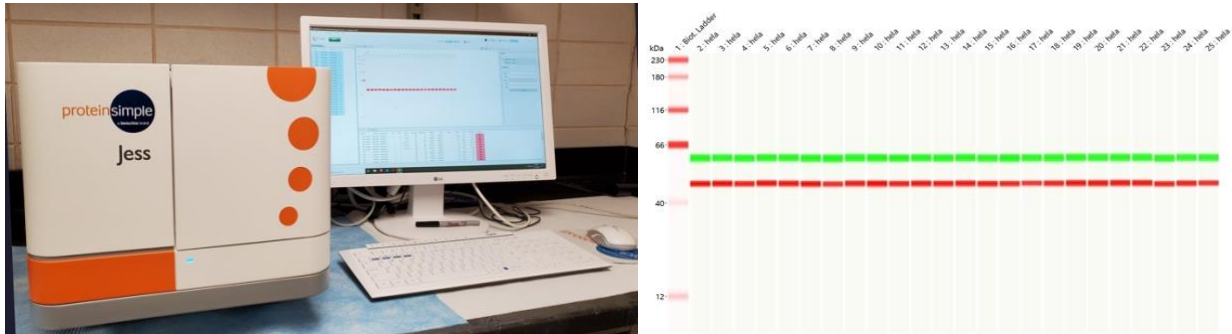


BREAKING NEWS!! Automated Western Blotting Machine



As you might know, last year **SCBioCRAFT** purchased an automated **Western Blot** machine, the “**Jess**”, whose installation and usage it has been put on hold due to the COVID-19 restrictions.

We are pleased to announce that we are now opening access to this machine.

The logistics for usage of the **Jess** are as follow:

1. **Initial training:** We provide online support material for you to learn the basic concepts and theory of this technique: <https://proteinsimple.docebosaa.com>
2. **Practical training:** Schedule a hands-on training with the **Core Manager**. We will be using a **Training Kit** provided by the manufacturer, with a known sample and target protein; you will learn practically how to handle the machine.
3. **Develop assay:** With the knowledge gathered from the theoretical and practical training (and if needed, with help from us as well) you will develop the perfect assay that fits your experiment and prepare a list of needed reagents.
4. **Purchase** consumables needed for your experiment and schedule your assay.
5. **Costs:**
 - a. The **Practical Training** time and kits are covered by the SCBioCRAFT
 - b. To cover the costs of your own **Jess** experiment we highly recommend you apply for a **SCBioCRAFT Voucher**, which, if approved, can provide up to \$2500 worth of services and supplies for your research. Apply here: <https://www.clemson.edu/centers-institutes/scbiocraft/voucher.html>

For additional questions contact our **Core Director**, Dr. Dan Simionescu or **Core Manager** Dr. Agnes Nagy Mehesz.

Hope to hear from you soon!!!

C-TRIC Core Manager
Dr. Agnes Nagy Mehesz
anagyme@clemson.edu