

Honors Seminars

Spring 2024

General education requirements courses fulfill

COURSE NUMBER	CREDIT FOR THOSE ON 2022-2023 ACADEMIC CATALOG AND BEYOND	CREDIT FOR THOSE ON EARLIER CATALOG YEARS
HON 2030	Arts and Humanities: Non-literature	Arts and Humanities: Non-literature
HON 2050	Does not fulfill general education area but counts towards credits for General Honors (GH) distinction	Does not fulfill general education area but counts towards credits for General Honors (GH) distinction (Group G: Other)
HON 2060	Global Challenges	Science and Technology in Society (STS)
HON 2070	Does not fulfill general education area but counts towards credits for General Honors (GH) distinction	Does not fulfill general education area but counts towards credits and Group G: Other for General Honors (GH) distinction
HON 2090	Does not fulfill general education area but counts towards credits for General Honors (GH) distinction	Cross Cultural Awareness (CCA) (must have a total of 3 credits for Gen Ed requirement)
HON 2100	Arts and Humanities: Non-literature	Arts and Humanities: Non-literature
HON 2210	Arts and Humanities: Literature	Arts and Humanities: Literature
HON 2220	Arts and Humanities: Non-literature	Arts and Humanities: Non-literature
HON 2230	Oral Communication	Oral Communication
HON 3960	Global Challenges	Does not fulfill general education area but counts towards credits for General Honors (GH) distinction (Group G: Other)
HON 3980	Does not fulfill general education area but counts towards credits for General Honors (GH) distinction	Does not fulfill general education area but counts towards credits for General Honors (GH) distinction (Group G: Other)

HON 2030

Secret Societies and Conspiracies

Cults, secret societies, and conspiracy theories are part of our modern culture. We'll be looking into conspiracies surrounding the moon landing, Knights Templar, and New World Order; the assassinations of the Kennedys, Malcolm X, and Martin Luther King, Jr.; and the deaths of Marilyn Monroe, Black Dahlia, Harry Houdini, as well as events at Roswell, New Mexico.

Meets: Th 9:30-10:45 a.m.

Professor: Peter Cohen

Credits: 3

CRN: 10392



HON 2030

Cultural Theory and Pop Culture

Popular culture shapes the way we think about ourselves and the world around us. In this course, students will learn the fundamental theoretical approaches to the study of popular culture and apply them to the consumption of popular culture in everyday life.

Meets: Th 12:30-1:45 p.m.

Professor: Briana Procratsky

Credits: 3

CRN: 17594



HON 2030

The World of Hamilton and Jefferson

In Lin Manuel Miranda's smash Broadway hit, *Hamilton* (2015), he invites audiences to shed their preconceived notions about early America, and instead to view the political, cultural, and social world of the 18th century from the perspective of those who shaped it. Framed around the lives of Alexander Hamilton and his arch-rival, Thomas Jefferson, this course presents students with a similar challenge, asking them to reckon with early America on its own terms.

Meets: Th 12:30-1:45 p.m.

Professor: Lee Wilson

Credits: 3

CRN: 15124



HON 2030

Commerce and Culture

Beyond the products or services you sell, the local customs, traditions and infrastructure are tied closely to the culture with which we live and do business. This course will study those closely tied links to traditions, transport, politics and more that help modern commerce thrive or cause enterprises to fail.

Meets: Th 11-12:15 p.m.

Professor: Alex Billinis

Credits: 3

CRN: 17656



HON 2030

French Scandals

Who doesn't love a little drama in their lives? The world is inundated with scandals nowadays, but this has always been the case. In this course we will examine scandals in French history to explore how these events shaped not only the development of France but how “scandal” crosses borders, comparing events in French history to events in our own history.

Meets: Th 2-3:15 p.m.

Professor: Kenneth Widgren

Credits: 3

CRN: 20742



HON 2030

Ethics & Social Responsibility

Are lawyers ethically obligated to maintain confidentiality regardless of the results? Are engineers responsible for injuries or deaths caused by a non-deliberate structural failure? What are the ethical responsibilities of a physician when a patient requests euthanasia or assistance in dying? In this course, we will explore the role of institutional morality in professional ethics.

Meets: Th 3:30-4:45 p.m.

Professor: Daniel Wueste

Credits: 3

CRN: 20808



HON 2050

Architects Doing Architectures

What do architects actually do? And how do they do it? What motivates them? What worries them? What challenges does designing today's built environment pose? BTW - what's architecture? And, most importantly, does architecture actually matter to anyone outside the field?



Meets: W 6:15-7:05 p.m.

Professor: Tim Brown

Credits: 1

CRN: 14244

HON 2050

University-Industry Connection

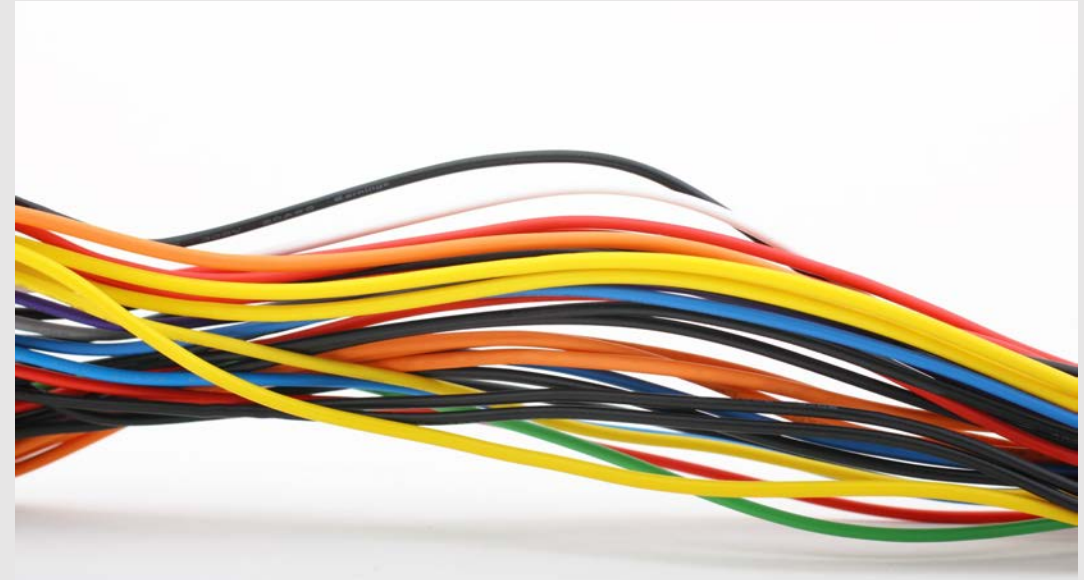
What's next in your life after college? How do you make the transition to working in industry? This course helps students explore the transition and steady growth from the University environment to the industrial environment. Dr. Yuri Freeman is the Fellow - Vice President of KEMET Electronics Corporation and an adjunct professor at Clemson University.

Meets: W 11:15-12:05 p.m.

Professor: Yuri Freeman

Credits: 1

CRN: 19286



HON 2050

Buddhist Meditation

Buddhist meditation shows you how your mind actually works, then helps you use this knowledge to become a better, happier, version of yourself. As the practice of meditation will be incorporated, this class will be a different kind of challenge that focuses on learning a set of skills with just enough theory to see the bigger picture.

Meets: MWF 1:25-2:15 p.m.

Professor: Kelly Smith

Credits: 3

CRN: 15620



HON 2050

Entrepreneurship

Students will learn the foundational principles of conventional entrepreneurship and then move on to explore how difference makers are changing the world by starting socially conscious companies and organizations relying on these creative, efficient, and profit seeking principles. Open to all majors and all years.

Meets: Th 12:30-1:20 p.m.

Professor: Keith Hudgins

Credits: 1

CRN: 15088



HON 2060

Tourism and Sustainability

How do we responsibly and sustainably serve the economic driver of tourism on a local, national, and international scale? Through the lens of environmental, economic, cultural, and societal sustainability, this seminar-style course seeks student input, experience, and research to explore the effects of tourism on communities.



Meets: Th 9:30-10:45 a.m.

Professor: Alexander Billinis

Credits: 3

CRN: 10393

HON 2070

Mathematics and Magic

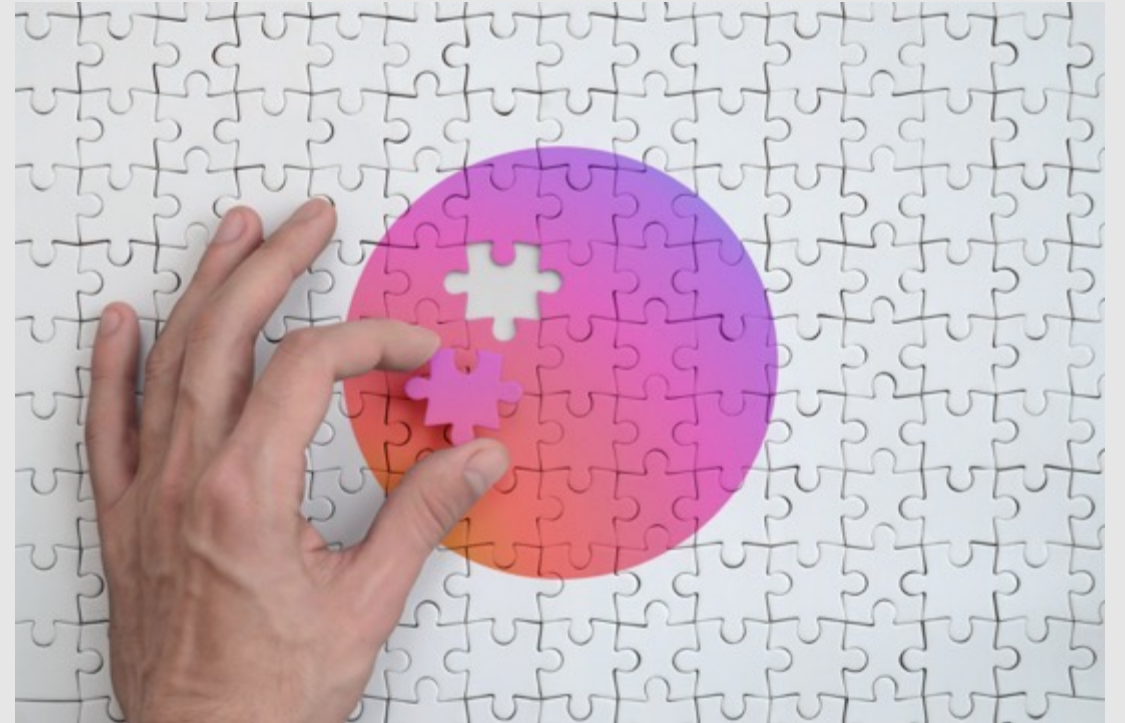
Why it is that things that are perceived to be impossible can be highly likely, and things that look highly likely may in fact be highly improbable? Many magic tricks depend upon subtle or deep results in mathematics. We will study a selection of these tricks and the mathematics behind them.

Meets: MWF 12:20-1:10 p.m.

Professor: Eliza Gallagher and Neil Calkin

Credits: 3

CRN: 17570



HON 2090

French Conversations

This course is open to Honors students in FREN 2020 and above. We will discuss a range of subjects to enrich your knowledge of France/the Francophone world. Primarily group discussion (in French), for extra speaking practice. Short supplemental readings will also help you to improve your vocabulary and reading skills.

Meets: T 12:30-1:20 p.m.

Professor: Kenneth Widgren

Credits: 1

CRN: 13103



Spanish Conversations

Meets: W 12:15-2:15 p.m.

Credits: 1

CRN: 13802



HON 2100/2101

Experiencing the Arts/ Experiencing the Arts Lab*

What is Art? What makes great art or music move us? Focusing on music, but incorporating the visual, dramatic, and design arts, the class will react to the arts through the lens of aesthetics. A major component of the course will be developing critical thinking skills and attending artistic events. Note: lab times may vary for afternoon and evening events.*

Meets: MW 11:15-12:05 p.m. (lab meeting times are variable)

Professor: Mark Spede

Credits: 3

CRN: 20903- Lecture & 20905- Lab

*More information in the course's Section Details tab in Banner



HON 2210

Building Imaginary Worlds

Worldbuilding—creating a complex, fully realized fictional world—is at the heart of sci-fi and fantasy. In this course, we will map the physical, political, historical, and socioeconomic landscapes of imaginary worlds to explore how/why imaginary worlds emulate and deviate from our own world.



Meets: T 5-7:45 p.m.

Professor: April Pelt

Credits: 3

CRN: 12782

HON 2210

Environmental Literature

Sir Gawain and the Green Knight, *The Cosmographia of Bernardus Silvestris*, *The Knight's Tale*, *Walden*, *Braiding Sweetgrass* and *Parable of the Sower* are examples of works we will use to consider historical ideas of cosmology, wilderness, animal-human relations, and ecological change.

Meets: Th 11-12:15 p.m.

Professor: Ingrid Pierce

Credits: 3

CRN: 10396



Decolonizing Detection

Works in the mystery and detective genres frequently reflect and perpetuate colonial and imperialist perspectives in everything from Agatha Christie's *Death on the Nile* and its adaptations to the current BBC show *Death in Paradise*. This course explores the ways authors from indigenous backgrounds are taking detective fiction and reframing it in a way that allows them to challenge colonialism and highlight their own cultures while still crafting compelling mysteries.



Meets: MWF 8-8:50 a.m.

Professor: Mary Nestor

Credits: 3

CRN: 19205

HON 2220

Film and Empire

What do the Indiana Jones and Star Wars franchises; adaptations of Frank Herbert's novel Dune; and the recent Indian Telugu-language Netflix blockbuster RRR all have in common? Some of the most enduring images of empire in the popular imagination have come from film. Imperial themes continue to inform popular movies, such as those above and this course will explore and interrogate the varied depictions of empire in cinema from the Golden Age to today.

Meets: Th 11:00-12:15 p.m.

Professor: Michael Silvestri

Credits: 3

CRN: 20804



HON 2230

A Good Person Speaking Well

This class will focus both on specific speaking skills and practice, but also on ethical and critical questions about what makes a good speaker. In addition to presenting speeches, we will learn about Greek and Roman traditions, as well as ancient traditions from Asia, Africa, and the Americas.

Meets: Th 11-12:15 p.m.

Professor: Elizabeth Gilmore

Credits: 3

CRN: 19378



HON 3960*

Leadership in a Changing World

Who are you as a leader? How can you best effect change? In this course, you will learn more about leadership and your own leader identity. You will become more aware of the world around you and issues we face to become a more self-aware, well-informed leader.



Meets: T 3:30-5:30 p.m.

Professor: Leslie Lewis

Credits: 3

CRN: 19268

*Note: requires junior standing or permission of instructor

HON 3960*

Civil and Human Rights

Various groups have fought for, and secured, civil and human rights in the U.S. and beyond, but that struggle is ongoing for many. This course explores how the civil and human rights we all avail ourselves of today came to fruition and how history has informed the U.S. legal framework as it relates to civil and human rights.

Meets: W 6:15-9 p.m.

Professor: Nadia Aziz

Credits: 3

CRN: 19382

*Note: requires junior standing or permission of instructor



HON 3960*

Reshaping the Narrative

This course will examine the enduring challenges of racism and discrimination and look at African Americans as thinkers, problem solvers, and developers of organizations and movements. As an advanced African American History course, students will study from the Revolutionary period through present day from an intellectual and social perspective. Using primarily original readings and discussions, students will compare how African American intellectuals have navigated the conflicting distance between real and ideal America.

Meets: Th 9:30-10:45 p.m.

Professor: Abel Bartley

Credits: 3

CRN: 19284

*Note: requires junior standing or permission of instructor



HON 3960*

Film and Climate Crisis

Through an interdisciplinary approach that includes film and media studies, trauma studies, environmental science, and environmental justice, we will explore how selected films including *Don't Look Up* (2022) and *Parasite* (2019) create opportunities to address problems created by the climate crisis.

Meets: MW 2:30-3:45 p.m.

Professor: John Smith

Credits: 3

CRN: 19247

*Note: requires junior standing or permission of instructor



HON 3980*

CI: Developing Math Puzzles

Students will work within the international Sudoku community to construct puzzles with logical constraints, develop code to augment existing puzzle-setting software used by the world's top constructors, and publish their work in appropriate international venues.

Meets: MW 1:25-2:15 p.m.

Professor: Neil Calkin and Eliza Gallagher

Credits: 1-3

CRN: 19381

*Note: requires permission of instructor



HON 3980*

CI: Golf Tournament

If you've ever uttered the phrase "I love sports!", have you thought what it would be like to work in sports? This class will give you the opportunity to run a charity golf tournament that will take place on April 19. Students in this CI will manage vendors, golfers, the course, and peers.

Meets: F 11:15-12:05 p.m.

Professor: Amanda Cooper Fine

Credits: 3

CRN: 20798



HON 3980*

Researching Clemson History

This course introduces students to the methods of conducting historical research. Students will collaboratively research an aspect of Clemson history and produce a co-authored chapter/article/exhibit with the instructor. This year's topic will be the history of the Clemson University Honors College.

Meets: TBD (discussed with registered students)

Professor: Joshua Catalano

Credits: 1-3

CRN: 21174

*Note: requires permission of instructor



HON 3980*

CI: Youth Scholars Program

The Youth Scholars Program (YSP) Creative Inquiry is the primary organizing body for partnership between the Clemson University Honors College and local elementary, middle, and high schools in nearby school districts. CI Members will get hands-on experience with mentoring and tutoring students from 5th-12th grade through bi-weekly school visits during the class time and at various other times throughout the week (flexible times to be determined). Students will also be the primary organizers in strengthening partnerships between larger groups of Clemson students and local schools, through various research endeavors that directly inform programmatic and logistic decisions of the YSP.



Meets: W 2:30-4 p.m.

Professor: Kris Fuller

Credits: 1-3

CRN: 17884

*Note: requires permission of instructor