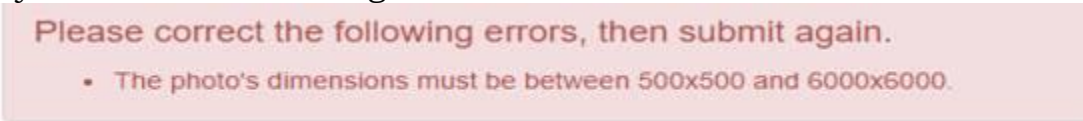


Here is the method for getting your Emeritus Tiger One card if you are interested. We do encourage all emeritus faculty to get an emeritus Tiger One Card. Please see below for how to obtain your card at this time:

- 1) Go to: <https://www.clemson.edu/campus-life/tigerone/get-your-tigerone-id/index.html>
- 2) Scroll down under "**TIGERONE ID ELIGIBILITY**" to "**Emeritus and Retiree Identification**"
- 3) Click on **Card Request Portal**
- 4) You may need to log in with your Clemson Credentials (username and password)
- 5) Highlight the circle for "I previously left the university and need a new card because I am returning." Click on "Get Started"
- 6) You will need to upload a headshot. You can upload your headshot by clicking on the words "photo upload" see arrow below:



- 7) If you receive this message:



Please follow prompts to upload your photo using the TigerOne Card portal.

- 8) If your photo is accepted, you can complete the process. There is a \$20.00 charge for all Emeritus Tiger One cards.