

# 2025

## ANNUAL REPORT



# Table of Contents

## 03 - Expansion of Ethics Education

From the Director  
Mission, Vision & Values  
From the Board Chair  
Advisory Board

## 11 - Growing Support

Generosity of Sponsors  
By the Numbers

## 17 - Equipping Tigers

Rutland Staff  
Faculty Fellows  
FACE Committee  
CHANGE Student Organization  
Greek Partners  
Ethics Scholars Program

## 27 - To Ethical Success

Annual Ethics Day  
Ina B. Durham Annual High School Ethics Case Competition  
Tigers for Integrity, Discourse, and Ethics Conference  
Cherry Braswell Rutland Memorial Ethics Award  
J.T. Barton, Jr. Memorial Ethics Awards

## 36 - Fiscal Year 2025

Fiscal Report 2024 - 2025



***Expansion  
of Ethics  
Education***

# From the Director



## Learning From The Past

**Dr. William McCoy, Director**

In several presentations I've made this academic year, the core theme has revolved around the subject of "mama'nem"—a term of endearment, frequently used in the Black community, to characterize what has been learned from our maternal elders about life lessons and circumstances. I've even made up a song about "mama'nem" that helps listeners understand the importance of holding dear those who so poignantly shared wisdom with us while growing up. In essence, those sayings were witty representations of what "good sense" is supposed to look and/or sound like.

To this end, outside my office door in Hardin Hall is a posting entitled "Insightful Quotes." Many of these quotes are things my maternal grandmother from Mississippi (a definitive "mama'nem" figure in my life) would frequently rely on to serve as verbal guides for life lessons. Several examples of such sayings include:

- "A closed book doesn't get read, and a closed mouth doesn't get fed."
- "Remember: going there can't tell been there how to get there!"
- "Bought sense is the best sense in the world."
- "A dog that will bring a bone will carry a bone."
- "When you've got your hand in the lion's mouth, you've got to ease it out."

In the last few years, I've come across several additional sayings that I cannot attribute to "mama'nem,"—yet they hold meanings just as influential as those listed above: "I only debate my equals; all others I teach" and, "There's so much good in the worst of us, and so much bad in the best of us that it hardly behooves any of us to talk about the rest of us".

In essence, these sayings are lessons we learn by simply experiencing life in its many facets—the good, the bad, and the interesting. Whether we learn these lessons from our elders or from an innocent child, the main point is to actually learn and grow from what we have been taught; but more importantly, we should share our learned experiences to help others along the way. This perpetuates growth for everyone.





Over the past seven years, the Rutland Institute for Ethics has been in perpetual growth and continuous improvement mode. We've become rather efficient in gathering the data necessary to assess the results of the past so that we can improve our goals for the future. Those who fulfill the role of "mama'nem" for us are our advisory board members, our affiliate faculty members (FACE), our student group (CHANGE), and various other stakeholders we are fortunate enough to cross paths with.

We are strong because our constituents are dedicated to ethics education and ethical leadership. In my not-so-humble opinion, the Rutland Institute for Ethics has never had a staff more devoted to expanding ethics education to the campus, community, and beyond. A simple yet telling example of Rutland's impact is demonstrated through Serbian students from the University of Belgrade, who during a time of political upheaval and uncertainty in their own country, requested to receive instruction on how to improve their

personal and professional ethics to better position themselves as future ethical leadership advocates. Instructing this group of students monthly on a Sunday morning for two hours (prior to church) is well worth the sacrifice!

The Institute will continue to drive "fiercely forward" changing lives and discourse for the positive. Regardless of how we have learned or who we have learned from, we move at the speed of progress to the next level of success. Join us as we journey; as mama'nem would say—"We promise we'll do you good!"

*William C. McCoy*

# Mission, Vision & Values



## MISSION

To encourage discussion on campus, in businesses, and in the community about how ethical decision-making can be the basis of both personal and professional success

Equipping students, staff, faculty, businesses, and community members with the tools to address personal, professional, and global ethical dilemmas



## VISION



## VALUES

Integrity  
Inclusivity  
Service  
Relationships

# Education Without Limits

This year, we were honored to partner with more than 70 academic groups and community organizations to provide the resources and tools necessary to become more ethical leaders on campus and beyond.



## HEAR OUR ROAR AT...

ASHRAE Presentation

Bridge Program Convocation

Business 3010

CUHR Staff Training

CUPD Staff Training

CU Grow

Orientation Ambassadors

Pi Chi Training

PRTM EDGE Program

Sales Innovation Program

Serbian Youth Caucus

St. George Rosenwald School

Town of Williamston MLK Breakfast

**& MANY MORE!**

# From the Board Chair



## Ethics in Everything, Everywhere

Jane Dyer, Board Chair

Most would say “yes” to all of us practicing ethical decision-making in everything and everywhere. In today’s world, the work of the Rutland Institute for Ethics is more important than ever before.

Ethical decision making is a process that can be learned and practiced through the STAR Decision-Making Model, taught through the Institute’s outreach across campus and into high schools across the country. Just this spring, the Institute provided high school students from across the country the opportunity to solve an ethical dilemma by applying the STAR model: Stop—recognize the ethical dilemma, identify the ethical issues, and

develop potential solutions; Test—use at least three of six ethical tests (Harm Test, Legality Test, Precedent Test, Respect Test, Golden Rule Test, Peer or Colleague Test); Act—make a decision; and Reflect—consider the outcome, take responsibility, and adapt for the future. This experience is an in-depth exercise and has lasting effects on the students who take away an invaluable process for making ethical decisions.

Another exciting event for the Institute was the campus wide TIDE conference. I personally got to hear from Kendra Gordillo—our own Board’s Young Alumni member who attended university in Amsterdam as a Fulbright Scholar. She shared a very interesting insight into fostering ethical leadership in biomedicine. Following Kendra was Dr. Jerome Adams, 20<sup>th</sup> Surgeon General of the United States. He shared his experiences and the ethical challenges in today’s world. Speakers across our different colleges gave practical insight and advice to Clemson students as they strive to be Tigers for Integrity, Discourse, and Ethics.

Serving on the Board of the Rutland Institute for Ethics is an honor as we continue to instill in Clemson students and high school students across the country the importance of ethical decision-making and practice. I believe that we are promoting ethics in everything, everywhere!

*Jane Dyer*



Jane Dyer pictured during her time in the Air Force, standing alongside her parents

# Advisory Board



**Delia Allen**



**Stephan C. Barton**



**Bryan Batson**



**Michael Cunningham**



**Dave Diamond**



**Jane Dyer**



**Anderson Garcia**



**Kendra Gordillo**



**Harskin "HJ" Hayes, Jr.**



**L'Tanga Johnson**



**Hunter Jones**



**Connie McCullough**



**Robert J. Rutland | Founder**



**Advisory Board 2024–2025**





# *Growing Support*



College of  
**ENGINEERING, COMPUTING  
AND APPLIED SCIENCES**



College of  
**BEHAVIORAL, SOCIAL  
AND HEALTH SCIENCES**



**LIBRARIES**

# Sponsors & Partners



College of  
**ARTS AND  
HUMANITIES**



College of  
**AGRICULTURE, FOREST  
AND LIFE SCIENCES**

College of  
**AGRICULTURE, FORESTRY  
AND LIFE SCIENCES**



College of  
**ARCHITECTURE, ART  
AND CONSTRUCTION**



 College of  
**SCIENCE**



 Wilbur O. and Ann Powers College of  
**BUSINESS**



 **HONORS COLLEGE**



 College of  
**EDUCATION**



 **GRADUATE STUDIES**

## Individual Sponsors

Delia Allen  
Stephan C. Barton  
Bryan Batson  
Michael Cunningham  
Dave Diamond  
Deborah DuBose

Kelly Durham  
Yvonne Durham  
Jane Dyer  
Anderson Garcia  
Kendra Gordillo  
H.J. Hayes, Jr.

L'Tanga Johnson  
Hunter Jones  
Nancy G. Love  
Connie E. McCullough  
Robert J. Rutland  
Dick Sargent

## Corporate Sponsors



**GE VERNOVA**

**Walter Wayne  
Development**



# 190

Hot Topics Attendees



# 82

Classroom Presentations

# 755

TIDE Conference Attendees

# 18

High School Ethics  
Case Competition Teams

# 185

Annual Ethics Day Attendees



# 173

Ethics Scholars

# 150

Distinguished Ethics Scholars



# 44

CHANGE Members

1

Cherry Braswell Rutland Award

7

J.T. Barton, Jr. Awards

441

LinkedIn Followers

8

Podcast Episodes

2034

Instagram Followers

12

Advisory Board Members

14

FACE Members

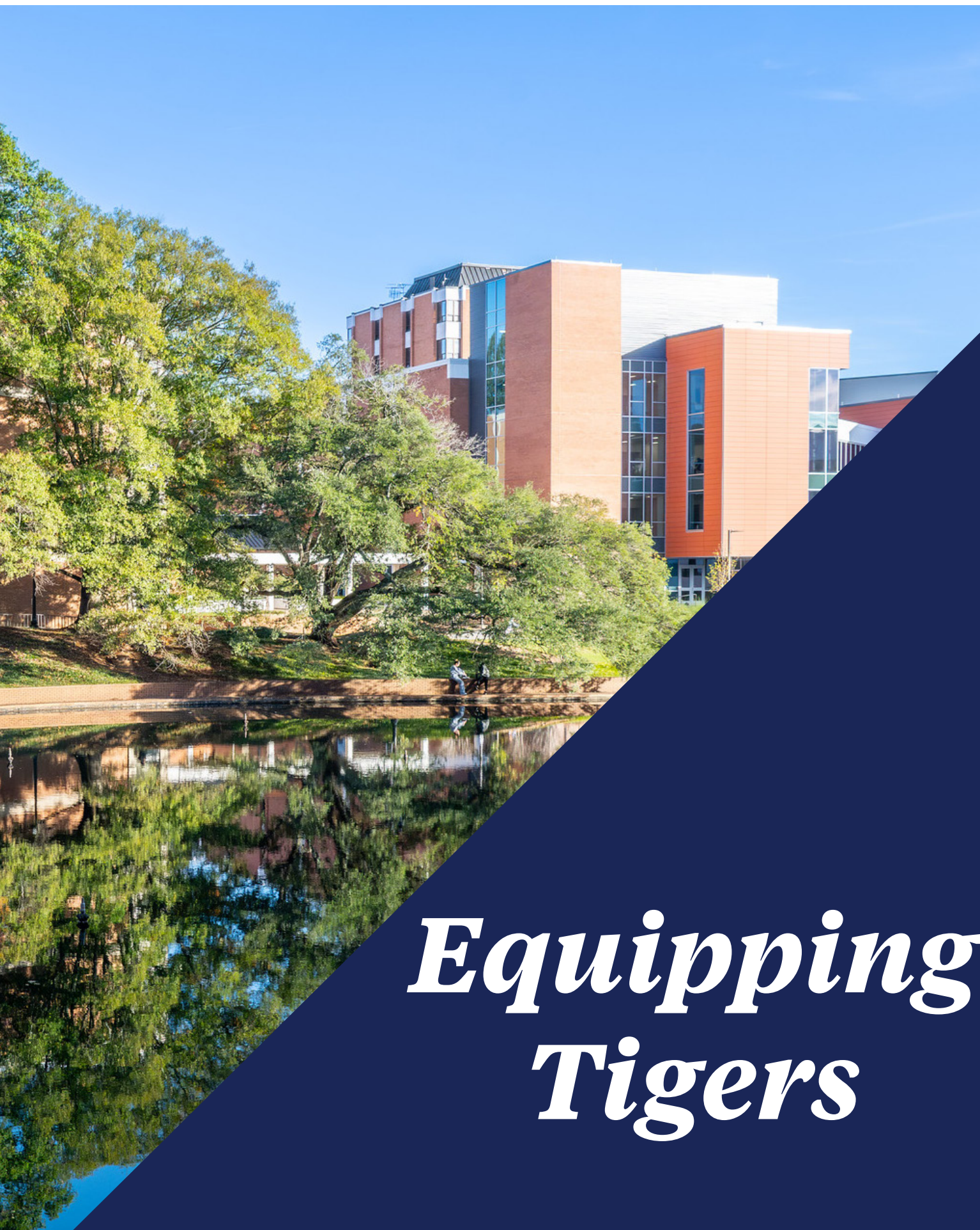
8

Staff Members

3

Faculty Fellows





# *Equipping Tigers*

# Rutland Staff



**Dr. William McCoy**

Director

Dr. McCoy serves as the face of our Institute, shaping institute-wide decisions, developing strategic initiatives with the Advisory Board, and advocating for ethics with campus leadership and beyond.



**Emily-Elizabeth Cotton**

Assistant Director

Emily-Elizabeth coordinates Institute programming and serves as the advisor of the CHANGE student ethics organization. She works to ensure the the continual operation of the Institute.



**Matt Harrington**

Education & Operations Specialist

Matt worked to ensure the digital advancement of the Institute and coordinated the Ina B. Durham High School Ethics Case Competition. He was key in establishing our National Beta partnership.



**Ashe Ballew**

Student Affairs Specialist

"Working with the Rutland Institute has challenged me to intentionally incorporate ethics into my work in student affairs. It has helped me become more reflective: asking why things are the way they are, rather than accepting them at face value. I have been continuously supported in doing what is right for my personal path to success."



**Kaelyn Gannon**

Fall Communications Specialist

"I absolutely loved my time working with the Rutland Institute, and being able to share the Institute's message and teachings was incredibly rewarding in my time there. Collaborating with the team was always a pleasure, and I greatly appreciate all the work that is being done by the Institute."



**Lily Rhodes**

Spring Communications Specialist

"My time with the Rutland Institute for Ethics has taught me to design with purpose. I've become more intentional in how I communicate, using design not just to inform, but to reflect values and support a meaningful mission. I'm incredibly grateful for the opportunity to grow alongside this Institute."

## Faculty Fellows

Our faculty fellows worked tirelessly to expand the mission of the Institute in and beyond the classroom.



**Karen Burton**

Clemson Libraries



**Luke Rapa**

College of Education

## Executive Fellow



**Dr. Jerome Adams**



Dr. Luke Rapa served as the instructor for our Ethics Scholars Workshops and facilitated the creation of the Question Project Workshop and ACE Award faculty initiatives.



Karen Burton chaired the FACE Committee, serving as the primary coordinator of the TIDE conference and hosted our semi-annual Hot Topics sessions.



Dr. Jerome Adams, former U.S. Surgeon General, served as the Executive Fellow and speaker at our TIDE conference. He shared his experience in a series of talks with AnMed and the Clemson School of Nursing.

# CHANGE

The CHANGE student ethics committee celebrated a year of remarkable growth and impact. With increased membership and a broader campus reach, CHANGE hosted 17 dynamic events engaging students across all eight academic colleges. From case competitions to collaborative discussions, their programming empowered ethical leadership and decision-making among Clemson students. As we expand our presence and deepen our impact, CHANGE continues to foster a culture of integrity and critical thinking across the university.



"I've grown so much through CHANGE—thanks to thoughtful conversations with inspiring, diverse peers. It's a unique program that lets students explore real-world ethics while planning meaningful events. I'm so grateful to be part of it!"

- Bailee Tayles, Member



"CHANGE pushed me to grow as a leader and communicator. It shaped how I approach ethics, decision-making, and collaboration, and I'll always value that experience."

- Justin Wolfe, President



"Being in CHANGE made my college experience truly one-of-a-kind. Our leadership stands out, and the diverse team made discussing ethics with friends both meaningful and fun."

- Brian Ruete, Member

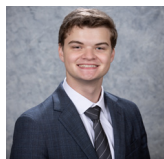


"CHANGE brought joy and consistency during my time at Clemson. The constant exposure to ethical leadership and discussion, facilitated through general body meetings, event planning, and other unique opportunities contributed to my educational experience. CHANGE has made me more confident, knowledgeable and socially aware to navigate complex issues."

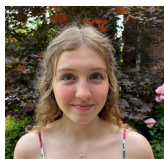
- Jasmine Sampson, Member



# Executive Board



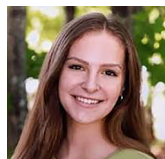
**Justin Wolfe**  
President



**Lucy Hart**  
Vice President



**Albash Khan**  
Treasurer



**Evelyn Morin**  
Secretary



**Delaney McLaughlin**  
Public Relations

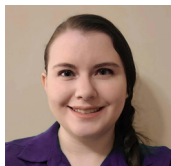


**Bobbi Elmore**  
Historian



**Matt Harrington**  
Policies & Procedures

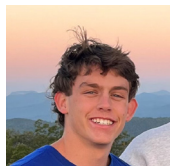
## Members



**Stephanie Beitle**



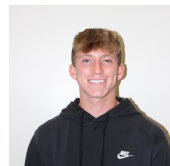
**Brianna Blake**



**Carson Cordero**



**Abby Dashbach**



**Will Davidson**



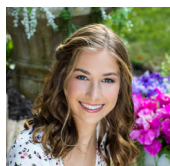
**Jaz Diaz Melgar**



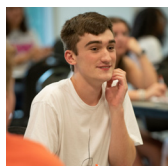
**Joyce Dosseh-Anyorn**



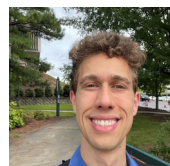
**Erin Glass**



**Emma Hardy**



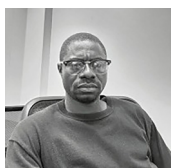
**Bryce Havens**



**Charles Hawes**



**Skyler Holland**



**Olumayowa Idowu**



**Ridge Kaauwai**



**Gabrielle Kovan**



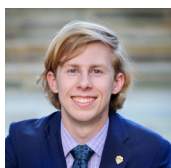
**Isabella Longo**



**Baylie Mazzyck**



**Maddie McKinley**



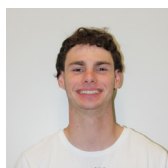
**Ryan Mehlem**



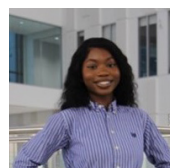
**Samone Middleton**



**Penny Millward**



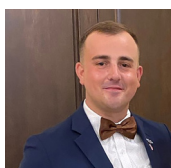
**James Moran**



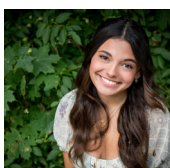
**Emeline Niyibitanga**



**Zach Padgett**



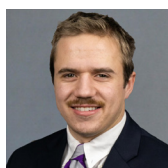
**Brian Ruete**



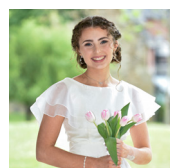
**Sofia Salvino**



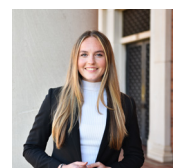
**Jasmine Sampson**



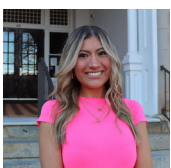
**Andrew Seelig**



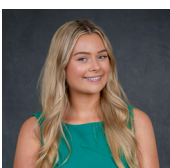
**Emily Shewchuk**



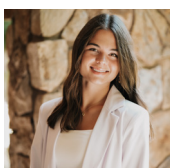
**Morgan Stone**



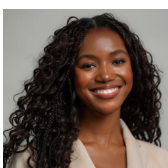
**Bailee Tayles**



**Abbie Taylor**



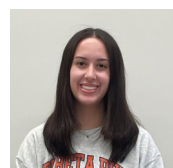
**Olivia Wendland**



**Brandi Williams**



**Noah Willsea**



**Kylie Wilson**

# Greek Life

This year, our Greek Life Partners, Delta Phi Lambda Sorority, Inc. (DPhiL) and Beta Upsilon Chi Fraternity (BYX), deepened their engagement with the Rutland Institute, serving as passionate ambassadors for ethics on campus. Their presence at the Ina B. Durham Case Competition and the TIDE Conference highlighted their commitment to fostering values-based leadership. Through thoughtful advocacy and collaboration, they've helped expand our reach within Greek life—bridging communities and championing ethical dialogue across Clemson's campus in powerful, peer-driven ways. Both chapters were awarded 2025 Chapter of the Year in their respective councils by the university Office of Fraternity and Sorority Life.



# FACE Committee



**Shanita Anderson**  
College of Education



**Scott Brame**  
College of Engineering,  
Computing and Applied  
Sciences



**Karen Burton**  
University Libraries



**Elizabeth Gilmore**  
Honors College & College  
of Behavioral, Social and  
Health Sciences



**Jeff Hallo**  
The Graduate School



**Meredith Morris**  
College of Science



**Julian Nixon**  
College of Agriculture,  
Forestry and Life  
Sciences



**Hope Parnell**  
Wilbur O. and Ann Powers  
College of Business



**Amir Poursaee**  
College of Engineering,  
Computing and Applied  
Sciences



**Phil Randall**  
College of Arts and  
Humanities



**Luke Rapa**  
College of Education



**Satomi Saito**  
College of Arts and  
Humanities



**Andy Tennyson**  
College of Science



**Jong Han Yoon**  
College of Architecture,  
Art and Construction

"The FACE Committee at Clemson University coordinated the Tigers for Integrity, Discourse, and Ethics (TIDE) Conference this year, which plays a pivotal role in addressing ethical dilemmas across various academic disciplines. By fostering open discourse and promoting integrity, the TIDE conference empowers participants to tackle complex ethical issues and contribute to a more just and respectful society. The FACE Committee's dedicated efforts ensure that students and faculty alike engage in meaningful ethical discussions, fostering a campus-wide culture of integrity and ethical leadership."

- Karen Burton, FACE Chair



# Ethics Scholars Program

This year, the Distinguished Ethics Scholars Program at Clemson University celebrated its largest graduating class to date and achieved peak enrollment of 323 scholars. This growth reflects the program's expanding influence in cultivating ethical leadership across disciplines. Participants engaged in immersive workshops and leadership initiatives, earning recognition as Ethics Scholars or Distinguished Ethics Scholars. Graduates have demonstrated continued success, applying ethical decision-making skills in diverse professional arenas. The program's sustained excellence underscores Clemson's commitment to integrating ethics into the fabric of higher education and preparing students to navigate complex moral landscapes with integrity.



# Congrats, Scholars!



**Raney Burnett**



**Julie Calhoun**



**Bobbi Elmore**



**Erin Glass**



**Seth Harding**



**Lucy Hart**



**Amber Hawes**



**Charles Hawes**



**Copeland Johnson**



**Albash Khan**



**Delaney McLaughlin**



**Jasmine Sampson**



**Sarah Webb**

Pictured above are the students who graduated as Distinguished Ethics Scholars, and listed below are those who graduated as Ethics Scholars this year. We are excited to see how they bring their gifts of ethical leadership and decision-making into the workplace, graduate school, and beyond. Congratulations, Tigers!

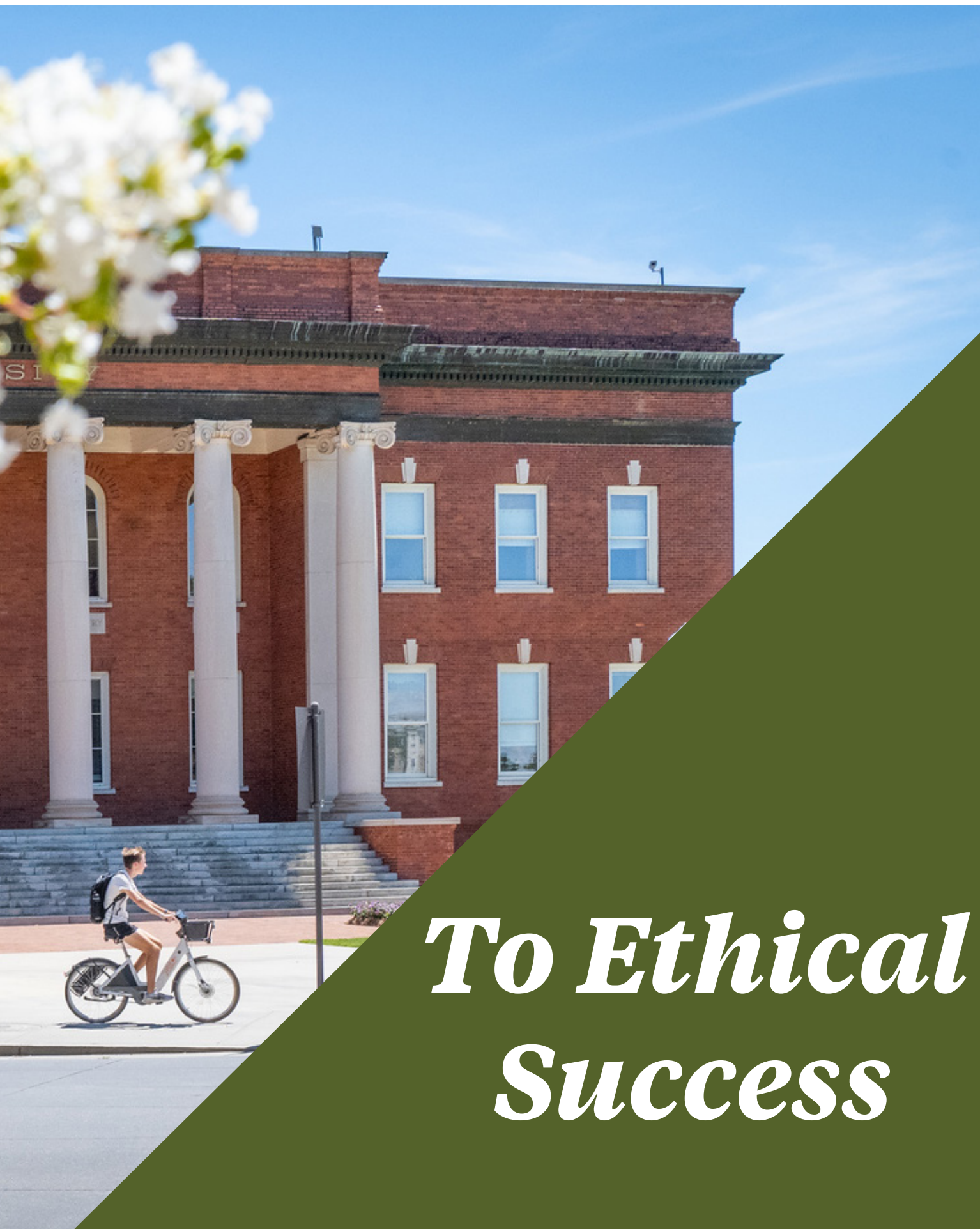
**Slade Bibb**  
**Kelli Brabson**  
**Olivia Cunningham**  
**McKinley Eads**  
**Kailee Heining**  
**Isabel Howard**  
**Olumayowa Idowu**  
**Zion Kaauwai**  
**Jessica Mason**

**Ava McVey**  
**Daniella Nichols**  
**Sarah Otterbeck**  
**Emma Pereda**  
**John Phillips**  
**Sofia Puig**  
**Lilian Raczowski**  
**Cailin Ramos**  
**Isabelle Roy**

**Sayde Saldierna-Leopold**  
**Desiree Sheetz**  
**Isabella Short**  
**Katelyn Shumate**  
**Abbie Taylor**  
**Allanis Vazquez-Martinez**  
**Connor-Michael Weir**  
**Kea Yengst**  
**Hannah Yon**

Visit [clemson.edu/ethics/ethicsscholars/scholars-roll-of-honor](http://clemson.edu/ethics/ethicsscholars/scholars-roll-of-honor) to view all of the graduates of the Ethics Scholars Program.





*To Ethical  
Success*

# Annual Ethics Day

Annual Ethics Day 2024 featured a compelling keynote by Clemson alumna Dr. Nancy Love, Professor of Civil and Environmental Engineering at the University of Michigan. Her talk, "When Ethical Norms Collide: A Viewpoint from Multi-Disciplinary 'People First' Engineering," challenged students and faculty to consider the complexities of ethical leadership in collaborative fields.

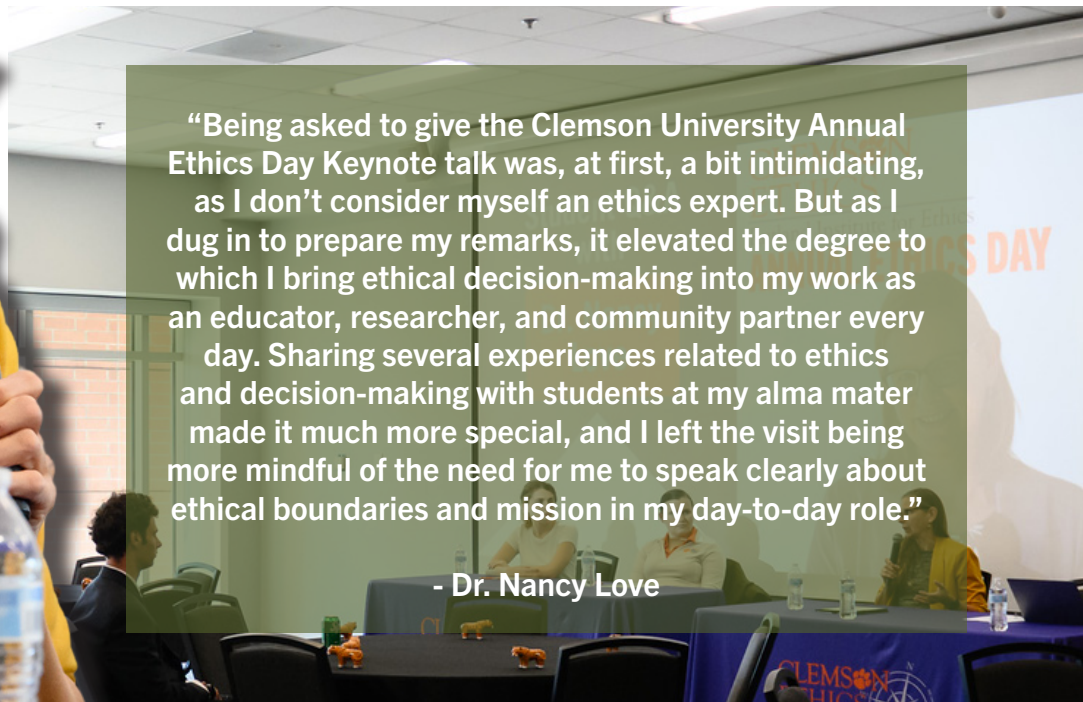


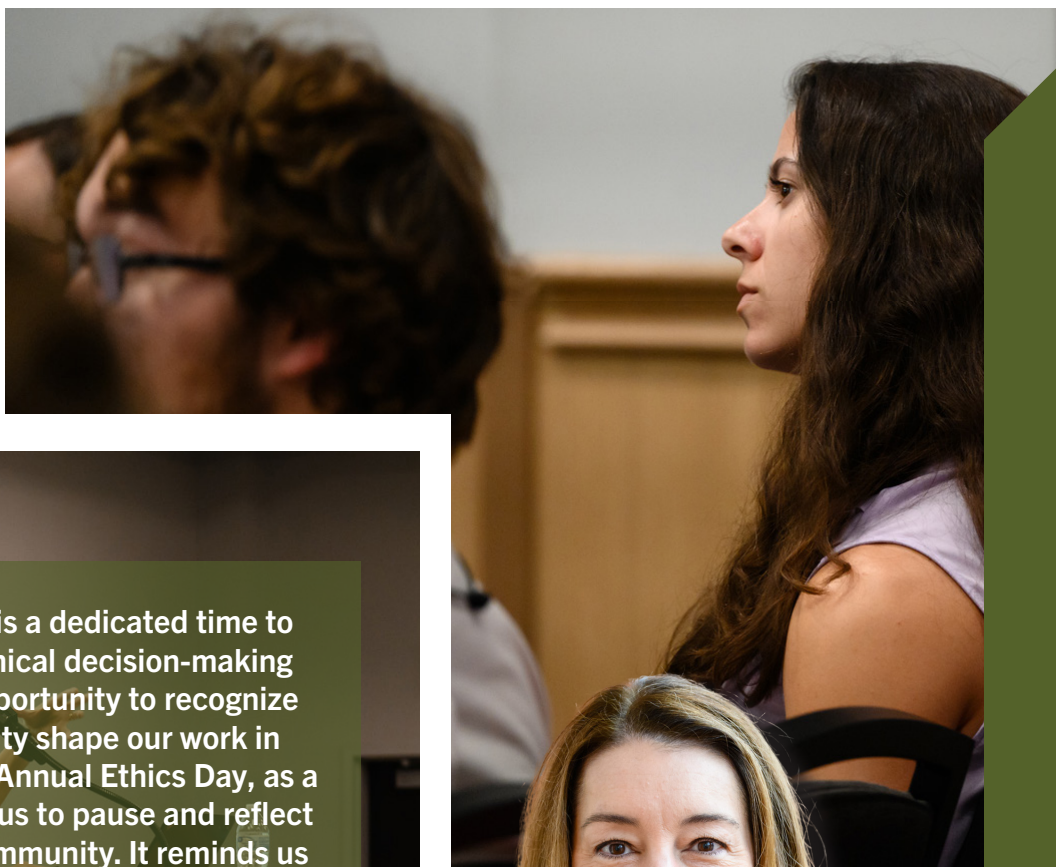
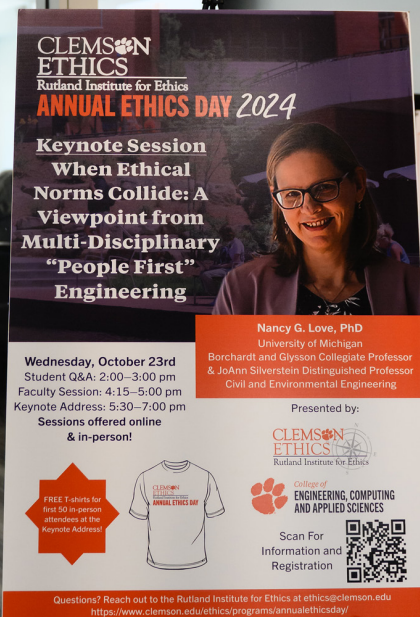
CHANGE students  
host a Q&A panel  
with Dr. Love



"Being asked to give the Clemson University Annual Ethics Day Keynote talk was, at first, a bit intimidating, as I don't consider myself an ethics expert. But as I dug in to prepare my remarks, it elevated the degree to which I bring ethical decision-making into my work as an educator, researcher, and community partner every day. Sharing several experiences related to ethics and decision-making with students at my alma mater made it much more special, and I left the visit being more mindful of the need for me to speak clearly about ethical boundaries and mission in my day-to-day role."

- Dr. Nancy Love





**"Compliance and Ethics Week is a dedicated time to reaffirm our commitment to ethical decision-making across the university. It's an opportunity to recognize how integrity and accountability shape our work in teaching, research, and service. Annual Ethics Day, as a centerpiece of the week, invites us to pause and reflect on the values that define our community. It reminds us that ethics isn't a one-time consideration, but a daily commitment to principled choices that sustain trust and advance our mission."**

**- Tracy Arwood, Associate Vice President and Chief Ethics and Compliance Officer**



Annual Ethics Day reinforced our collaboration with the University Office of Compliance and Ethics. Aligned with the week's campus-wide focus on integrity, the Annual Ethics Day events elevated the Institute's role in encouraging ethical dialogue across disciplines. Throughout the three sessions, the day sparked thoughtful dialogue, emphasizing the importance of ethical reflection in both academic and professional settings.

# Ina B. Durham High School Ethics Case Competition

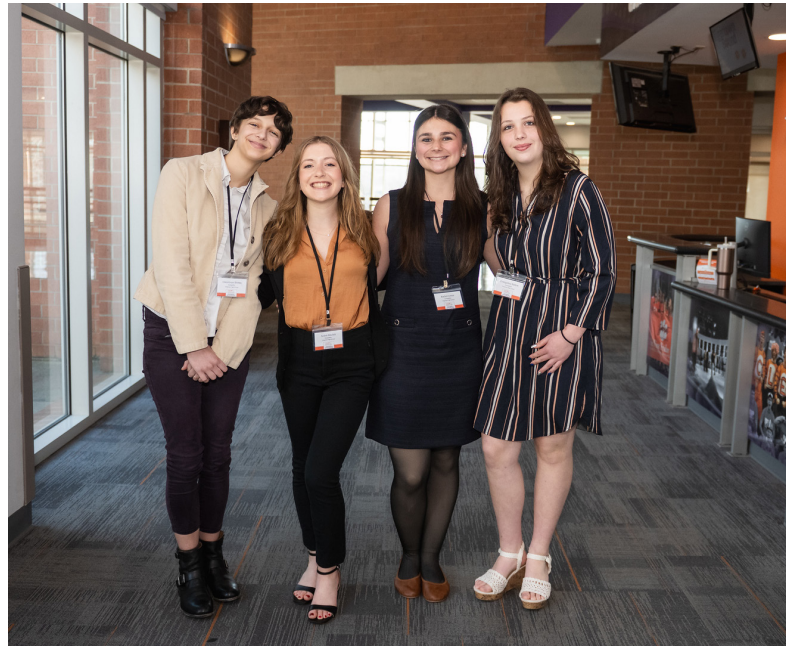
The 2025 Ina B. Durham High School Ethics Case Competition welcomed 18 student teams from up and down the East Coast, marking one of our most geographically diverse cohorts yet. These talented students tackled a timely ethical dilemma centered around the practice of sports betting, and sharpened their critical thinking, teamwork, and communication skills.

This year we announced a new partnership with National Beta, the largest independent, non-profit youth organization in the U.S., reaching over 450,000 students across 47 states. This collaboration helped expand the reach and visibility of the case competition in 2025 through the release of an ethical decision-making curriculum based on the Clemson University STAR Model distributed to more than 3,000 high schools. By embedding ethics into National Beta's leadership and service framework, we're equipping thousands of high school students with tools to navigate ethical challenges and grow as responsible, values-driven leaders.



"Winning the 2025 Ina B. Durham High School Ethics Case Competition reflects years of hard work. Thanks to past competitions and high expectations from our advisors, I've built the skills to succeed under pressure. This experience builds confidence and key professional skills for all who compete."

- Krish Kumar, Winner



1st Place: Kiley Seaver & Krish Kumar from Westside High School

2nd Place: Caidyn Schmidt & Sahasra Datla from Independent School

3rd Place: Arham Huq & Andie Ingraham from Research Triangle High School



"As a student-centered organization focused on developing leaders who positively impact the world, National Beta is thrilled to partner with Clemson University's Rutland Institute for Ethics. This collaboration allows us to provide our members with an innovative ethics curriculum, empowering students to navigate complex challenges with integrity and make a lasting positive impact in their communities."

- Bobby Hart, National Beta CEO



"The 2025 Ina B. Durham High School Ethics Case Competition was our largest yet, bringing 36 students from across the Atlantic Coast to Clemson to showcase their research, public speaking, and ethical reasoning skills. Organizing this event was a highlight of my time with the Rutland Institute, pushing me to think creatively and share our values with a broader audience. Through our growing partnership with National Beta, I hope we continue to expand ethical discussions in secondary education and position the institute as a national leader in experiential ethics learning."

- Matt Harrington, Education & Operations Specialist

Our growth in 10 years  
Diversifying our Talent Base  
Hiring Returning Citizens

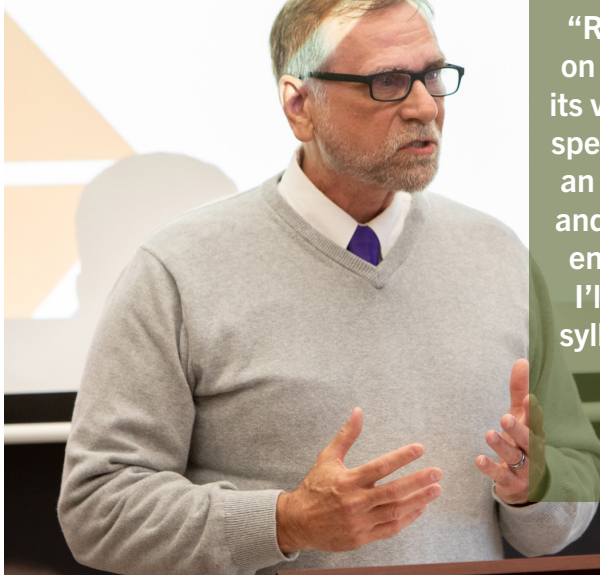


"Speaking at this year's TIDE Conference was a joy. I'm always inspired by Clemson students and hope they left feeling both empowered and challenged. TIDE is a special space to explore the real-world impact of ethical leadership, and I'm grateful to have been part of it!"

-Kendra Gordillo, TIDE Speaker



Tigers for Integrity, Discourse and Eth



"Reading my students' reflections on the TIDE Conference reaffirmed its value. Hearing from distinguished speakers like Dr. Jerome Adams was an incredible opportunity for them, and it's clear the conference deeply enriches the Clemson experience. I'll continue including TIDE in my syllabus each spring. Thank you for bringing it to our campus."

- Phil Randall, FACE Member





“At the 2025 Clemson TIDE Conference, I had the honor of championing health equity as an ethical imperative — one that calls for our shared responsibility in building a more just society. Our conversations shed light on how deeply systemic inequities shape health outcomes, underscoring that closing these gaps is not simply a matter of policy—it is a matter of principle. By fostering honest dialogue and collective action, we can uphold the dignity of every person and ensure that everyone, regardless of background or circumstance, has a fair opportunity to live a healthy, thriving life.”

-Dr. Jerome Adams, Rutland Executive Fellow

# TIDE Conference

The Tigers for Integrity, Discourse, and Ethics (TIDE) Conference, hosted by the Rutland Institute for Ethics, invites students, faculty, and community members to explore the ethical challenges facing their disciplines and the broader world. This intercollegiate series spotlighted how integrity and open discourse can create a more just society and a university culture rooted in fairness and respect.

Each evening featured thought-provoking presentations co-hosted by Clemson’s academic colleges. The College of Education welcomed Dr. Marquice Clark, who shared his transformational leadership at Cleveland Academy. The College of Business hosted Dr. Pam Smith, whose address on mindset and success offered practical ethical insights for aspiring professionals.

College of Science Fulbright Scholar, Kendra Gordillo, explored ethical leadership in biomedicine, while former U.S. Surgeon General, Dr. Jerome Adams, led a town hall on public health ethics. Dr. John Knapp examined the role of AI and authorship in leadership integrity for the College of Arts and Humanities. Conservation and justice were front and center as Megan Chase-Muller (CECAS) and Terrance Freeman (CAAC) concluded the conference with powerful stories of ethical leadership in action.

TIDE remains a signature initiative promoting interdisciplinary engagement with ethics at Clemson University.

# Cherry Braswell Rutland Memorial Ethics Award

Established in 2018 through the Rutland Institute for Ethics, the Cherry Braswell Award honors a Clemson student who demonstrates ethical fortitude in the face of a real ethical dilemma. Selected by a panel of faculty and alumni, this year's \$1,000 award goes to Terence Asitibasi, whose thoughtful decision-making and principled leadership embody the spirit of Cherry Braswell Rutland.

## Winner



**Terence Amankatoa Asitibasi**

Terence, a master's student from Ghana, is the 2025 Cherry Braswell Award recipient. His leadership spans non-profit work, student engagement, and research on rural development and social change. Committed to integrity and equity, he aspires to influence policy that fosters sustainable, ethical progress in underserved communities.



# J.T. Barton, Jr. Memorial Ethics Awards

Established in 2001 by Stephan Barton in honor of his father, J.T. Barton, Jr. (Clemson Class of 1950), the J.T. Barton, Jr. Memorial Ethics Award celebrates students who demonstrate excellence in ethical decision-making. Now awarded to individuals or student groups, recipients must pledge to use the funds—\$1,500, \$1,000, or \$500—to promote ethical thinking on campus. Judged by the Rutland Institute Advisory Board, the award supports projects that thoughtfully engage today's ethical challenges and foster a culture of integrity, reasoning, and leadership across the Clemson University community.

## Winners



**Albash Khan**  
1st Place



**Emily Shewchuk**  
2nd Place



**Justin Wolfe**  
3rd Place

## Honorable Mentions



**Bailee Tayles**



**Morgan Stone**



**Skyler Holland**



**Jasmine Sampson**

To read more, visit <https://www.clemson.edu/ethics/awards-scholarships/barton-award-2025.html>



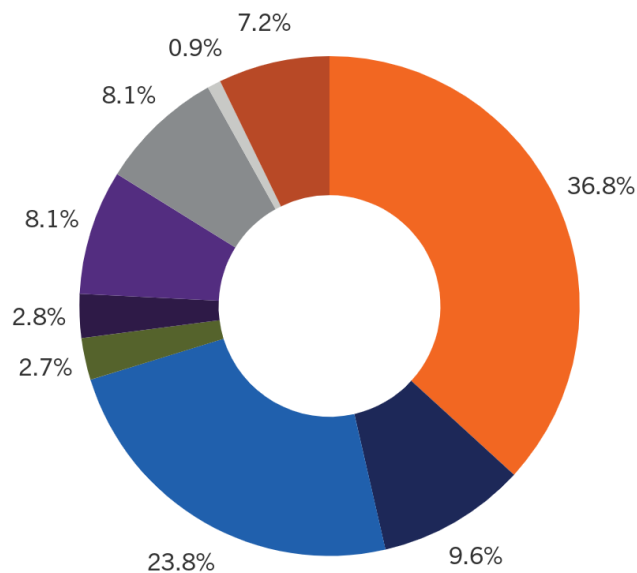


*Fiscal  
Year 2025*

# Fiscal Report 2024–2025

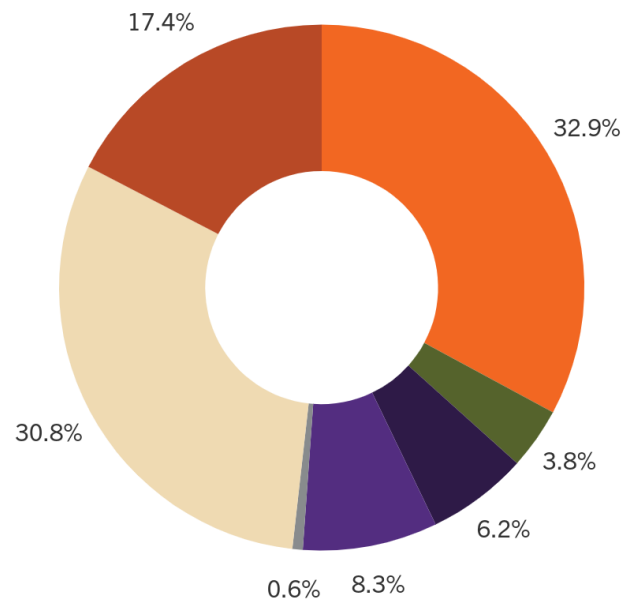
Income	FY 25 Budget	FY 25 Actual	FY 26 Budget
University Support	\$ 329,111.10	\$ 329,111.10	\$ 288,452.10
Advisory Board Donations	\$ 12,000.00	\$ 12,000.00	\$ 12,000.00
General Donations	\$ -	\$ 29,750.00	\$ -
Albert C. Todd III Family Endowment	\$ 3,390.00	\$ 3,390.00	\$ -
JT Barton Jr. Endowment	\$ 3,526.00	\$ 3,526.00	\$ 3,000.00
Quasi Endowment	\$ 10,087.00	\$ 10,087.00	\$ 5,000.00
Robert J. Rutland Center Endowment	\$ 7,749.00	\$ 7,749.00	\$ 9,500.00
Graduate Scholars Co-Sponsorship	\$ 1,500.00	\$ 1,080.00	\$ 1,000.00
LEAD Scholars Program	\$ -	\$ 9,000.00	\$ -
<b>Total</b>	<b>\$ 367,363.10</b>	<b>\$ 405,693.10</b>	<b>\$ 318,952.10</b>

## FY 25 Operating Income



- University Operations Budget
- Advisory Board Donations
- General Donations
- Albert C. Todd III Family Endowment
- JT Barton Jr. Endowment
- Quasi Endowment
- Robert J. Rutland Center Endowment
- Graduate Scholars Co-Sponsorship
- LEAD Scholars Program

## FY 25 Operating Expense



- University Operations Budget
- Albert C. Todd III Family Endowment
- JT Barton Jr. Endowment
- Quasi Endowment
- Robert J. Rutland Center Endowment
- Robert J. Rutland Operating
- LEAD Scholars Program

<b>Program Expenses</b>	<b>FY 25 Budget</b>	<b>FY 25 Actual</b>	<b>FY 26 Budget</b>
Annual Ethics Day	\$ 5,400.00	\$ 4,487.42	\$ 1,500.00
TIDE Conference	\$ 12,500.00	\$ 12,546.81	\$ 1,000.00
Distinguished Ethics Scholars Program	\$ 2,500.00	\$ 1,698.17	\$ 2,000.00
Eller Case Competition	\$ 7,150.00	\$ 625.00	\$ -
College Ethics Symposium	\$ 1,250.00	\$ 424.78	\$ 1,500.00
CHANGE Student Group	\$ 2,000.00	\$ 2,000.00	\$ 3,000.00
Hot Topics	\$ 300.00	\$ 550.00	\$ -
LEAD Program	\$ 9,000.00	\$ 11,210.22	\$ -

<b>General Expenses</b>	<b>FY 25 Budget</b>	<b>FY 25 Actual</b>	<b>FY 26 Budget</b>
Salaries	\$ 283,161.10	\$ 283,161.10	\$ 280,357.00
Staff Travel	\$ 7,500.00	\$ 1,398.75	\$ 1,296.00
Board Meeting	\$ 1,500.00	\$ 987.40	\$ 2,000.00
Phone	\$ 1,000.00	\$ 426.00	\$ 50.00
Printers	\$ 750.00	\$ 579.16	\$ 600.00
Printing	\$ 3,000.00	\$ 1,797.10	\$ 2,500.00
Supplies	\$ 150.00	\$ 62.26	\$ 365.00
Facilities	\$ 100.00	\$ -	\$ 200.00
Memberships	\$ 4,500.00	\$ -	\$ -
Cherry Braswell Student Award	\$ 1,000.00	\$ 1,000.00	\$ 1,000.00
Postage	\$ 200.00	\$ -	\$ 200.00
Business cards	\$ 50.00	\$ 20.33	\$ 50.00
Marketing	\$ 2,000.00	\$ 1,631.24	\$ 1,500.00
Misc.	\$ 500.00	\$ 217.94	\$ -
Credit Card fees	\$ 20.00	\$ 34.55	\$ 30.00
Faculty Fellow	\$ 24,000.00	\$ 12,000.00	\$ -

<b>Foundation Expense</b>	<b>FY 25 Budget</b>	<b>FY 25 Actual</b>	<b>FY 26 Budget</b>
ACE Faculty Awards	\$ 2,000.00	\$ -	\$ -
Business Meals	\$ 1,000.00	\$ 2,416.56	\$ 500.00
The Question Project	\$ 5,050.00	\$ 302.41	\$ -
UPIC Intern	\$ 5,000.00	\$ 5,347	\$ 5,000.00
J.T. Barton Jr. Memorial Ethics Award	\$ 3,000.00	\$ 4,000.00	\$ 3,000.00
LEAD Program	\$ -	\$ 10,462.81	\$ -
Miscellaneous	\$ -	\$ 1,445.90	\$ 2,000.00

<b>Total</b>	<b>\$ 385,581.10</b>	<b>\$ 360,887.31</b>	<b>\$ 309,648</b>
--------------	----------------------	----------------------	-------------------

