



2019 Industrial Hemp Update

Justin Ballew and David DeWitt
Horticulture and Agronomy Agents



End use will determine production techniques.

- Fiber
- Seed
- **CBD** – most growers in SC

CBD Production

- Planting dates: mid May - June
- Grown mostly on tobacco model (48" rows) or vegetable model (5-6' rows on plastic).
- Plant density: 1500-2000 plants/acre
- Fertility: 120 bu corn or prescribed by processor.
- Very labor intensive
 - Planted by hand or transplanter
 - Harvested mostly by hand
- Female plants only. Presence of male plants causes females to produce seed.
- Harvest and dry to 9% in the fall.







Economics

- Plant material Costs:
 - Seed - around \$1 each
 - Transplants - \$4-6 each
- Production Costs: \$10,000-\$15,000 per acre
- Yield: ~1lb of floral material per plant
- Price of floral material: \$20-40 per lb
- Many growers still waiting to get paid for 2018 crop.



2018 Pest Issues

- Weeds!!!!
- Insects
 - Aphids – Mostly in greenhouses
 - Spidermites – mostly in greenhouses
 - **Hemp russet mites**
 - Stink bugs
 - **Corn Earworms**
- Diseases
 - Southern blight
 - Leaf spots
 - Possibly bacterial wilt
- Theft



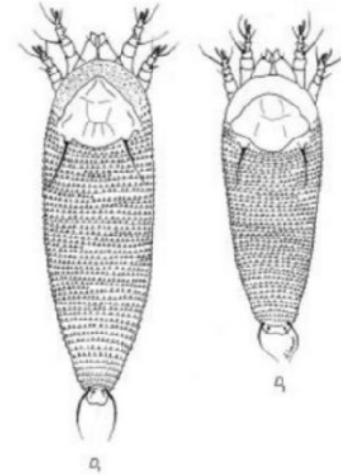
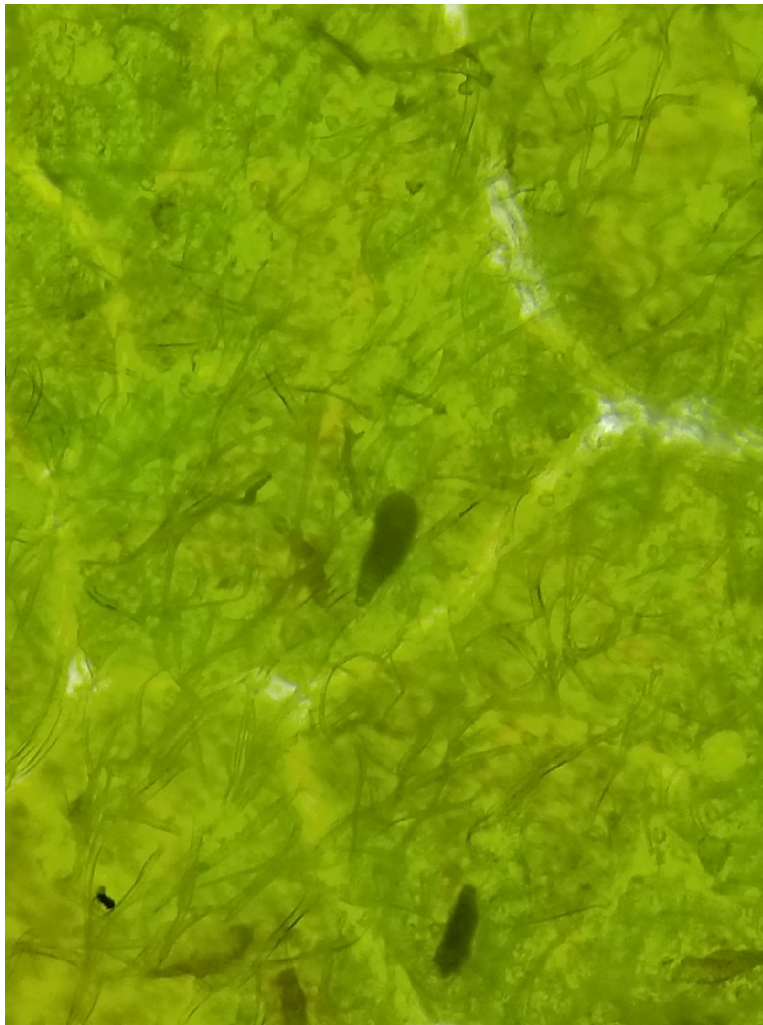
Aphids







Hemp Russet Mite



Dorsal view of Hemp Russet Mite nymph and larva (Petanovic, 2007).







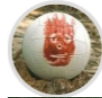
Southern Blight







Spider Man Is Stealing Hemp In South Carolina



Published 2 months ago on September 24, 2018

By FITSNews 



A man wearing a **Spider Man** mask was spotted absconding with hemp plants from a South Carolina farm last week.

Allison Justice – vice president of cultivation for **OutCo Labs** – posted images of the alleged heist on her Facebook page. She also reminded would-be thieves that the plants allegedly stolen did not contain tetrahydrocannabinol (THC), only medical grade cannabidiol (CBD).