



[\[back to Historical Enrollment Homepage\]](#)

Historical Enrollment 1893 to Present

In 1893, there were 446 students and 15 faculty. The President was Edwin Boone Craighead.

G.E. Metz compiled these statistics in March 1988 using Annual Statistical Reports of the Registrar's Office, the Clemson Catalog, and "Clemson Alumni News" from Dec. 1952. Enrollments are for Main Campus only.



Year	Main Campus Enrollment
1893	446
1894	635
1895	370
1896	350
1897	449
1898	446
1899	461
1900	483
1901	500
1902	539
1903	605
1904	674
1905	652
1906	658
1907	687
1908	648
1909	653
1910	684
1911	804
1912	819
1913	800
1914	819
1915	803
1916	853
1917	804
1918	825
1919	886



The first graduation was held in December 1896 with a graduating class of 37 students-- 15 in agricultural courses and 22 in engineering courses.

In 1914, the Cooperative Extension Service was established, fulfilling our land-grant mission.



In 1917, the entire senior class enlisted in World War I.



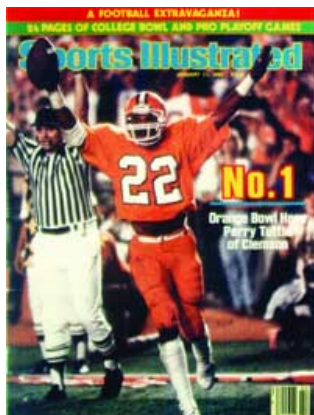
In 1940, legendary Frank Howard began his 30-year stint as head football coach. (He guided Clemson to six Top-20 seasons, eight conference championships, 100 conference victories, 165 overall wins and eight bowl games.)

Over 6,000 Clemson students and alumni served "gladly to the defense of our nation" in World War II; 373 died, 57 from the Class of 1941. The Class of 1944 was the smallest class in Clemson history with 13 graduates.



1964

Clemson Agricultural College renamed Clemson University in recognition of expanded academic offerings and research pursuits.



1920	847
1921	1,007
1922	1,008
1923	1,057
1924	1,155
1925	1,032
1926	1,137
1927	1,212
1928	1,258
1929	1,242
1930	1,348
1931	1,247
1932	1,217
1933	1,120
1934	1,262
1935	1,535
1936	1,620
1937	1,912
1938	2,150
1939	2,279
1940	2,381
1941	2,349
1942	2,370
1943	752
1944	745
1945	1,041
1946	2,965
1947	3,253
1948	3,277
1949	3,360
1950	2,921
1951	2,788
1952	2,764
1953	2,749
1954	2,690
1955	3,006
1956	3,285
1957	3,540
1958	3,793
1959	3,889
1960	4,048



Margaret Marie Snider was the first woman to graduate from Clemson in 1957.



Clemson's first black student, Harvey Gantt, graduates in 1965.

Clemson won their first national football championship on Jan. 1, 1982, defeating the Nebraska Cornhuskers 22-15 in the Orange Bowl.

1960	4,040
1961	4,104
1962	4,252
1963	4,376
1964	4,588
1965	5,024
1966	5,540
1967	6,057
1968	6,525
1969	6,666
1970	7,188
1971	7,965
1972	8,584
1973	9,461
1974	9,763
1975	10,247
1976	10,289
1977	10,382
1978	10,471
1979	10,817
1980	10,891
1981	11,291
1982	11,618
1983	11,828
1984	12,122
1985	12,126
1986	12,149
1987	12,870

Listed Below are Total Enrollment figures that have been reported to the Commission of Higher Education. These numbers include enrollment data from Greenville Tech, Institutes and MBA-Furman.

Year	Total	Undergraduate	Graduate
1982	12,093	10,150	1,943
1983	12,459	10,330	2,129
1984	12,926	10,488	2,438
1985	12,893	10,434	2,459
1986	13,062	10,360	2,702
1987	13,865	10,970	2,895
1988	14,794	11,774	3,020
1989	16,072	12,563	3,509

1990	16,303	13,010	3,293
1991	17,295	13,285	4,010
1992	17,666	13,305	4,361
1993	16,614	12,525	4,089
1994	16,290	12,290	4,000
1995	16,318	12,542	3,776
1996	16,526	12,707	3,819
1997	16,396	12,710	3,686
1998	16,685	13,053	3,632
1999	16,982	13,526	3,456
2000	17,465	14,066	3,399
2001	17,101	13,975	3,126
2002	16,876	13,734	3,142
2003	17,016	13,813	3,203
2004	17,110	13,936	3,174
2005	17,165	14,096	3,069
2006	17,309	14,176	3,133