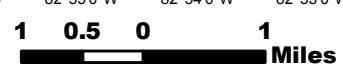
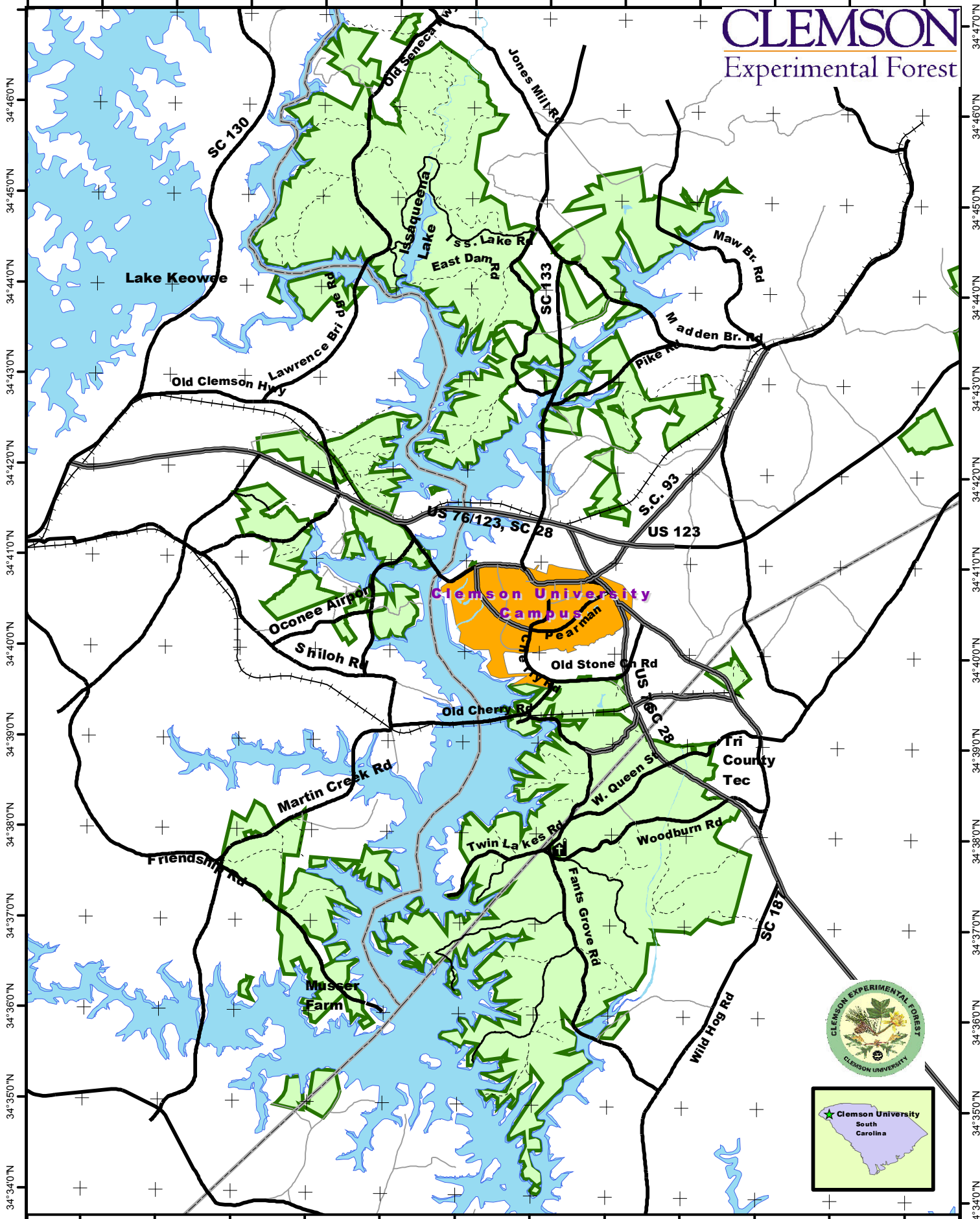


82°57'0"W 82°56'0"W 82°55'0"W 82°54'0"W 82°53'0"W 82°52'0"W 82°51'0"W 82°50'0"W 82°49'0"W 82°48'0"W 82°47'0"W 82°46'0"W 82°45'0"W

# CLEMSON

Experimental Forest



Clemson University Properties  
Anderson, Oconee & Pickens Counties



K. Cox  
May 2012



82°56'0"W 82°55'0"W 82°54'0"W 82°53'0"W 82°52'0"W 82°51'0"W 82°50'0"W 82°49'0"W 82°48'0"W 82°47'0"W 82°46'0"W 82°45'0"W

34°34'0"N 34°35'0"N 34°36'0"N 34°37'0"N 34°38'0"N 34°39'0"N 34°40'0"N 34°41'0"N 34°42'0"N 34°43'0"N 34°44'0"N 34°45'0"N 34°46'0"N 34°47'0"N