

Horsehead Point Falls

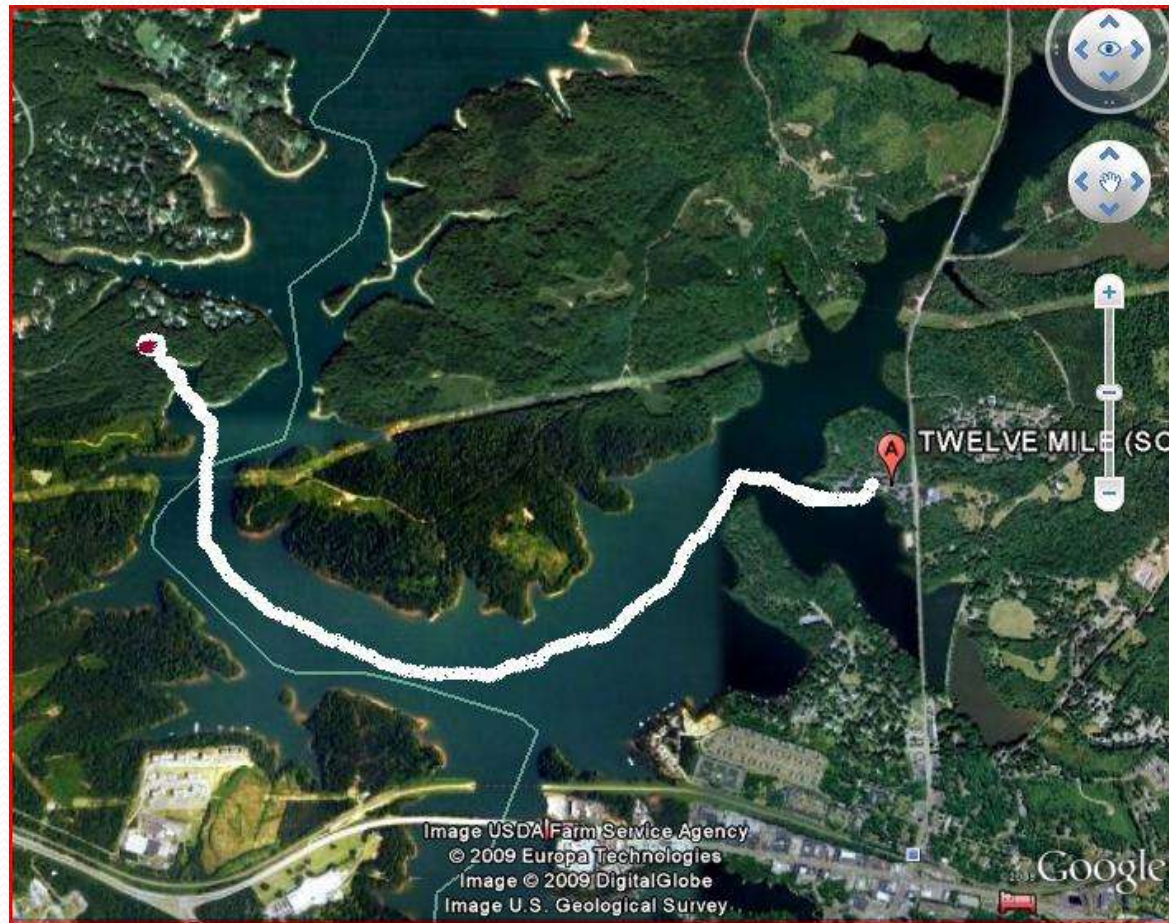


Stephen Bolus, William Johnson, Lindsey Weed,
and Laura Wiles,

Location

- Discover the pristine beauty of a remote waterfall that can be accessed by boat on Lake Hartwell!
- The nearest boat launch ramp is located at Twelve Mile Recreation Area in Clemson, SC.
 - From Highway 123, turn onto Highway 133 and travel one mile to the Twelve Mile Recreation Area.

Location



Location

- You will hear the waterfall before you see it.
- Horsehead Point Falls is about 25 feet wide and 9 feet tall.



Strengths

- Short but sweet
- Low noise pollution
- Cold water
- Hardwood trees, deciduous shrubs
- Smooth rock floor
- Easily accessible from Lake Hartwell
- Private

Weaknesses

- Limited land access
- Shoes required
- Water flow varies
- Stream delta provides optimum habitat for water snakes

Opportunities



- Increased foot traffic will make a “natural” path of compacted dirt
- Collaboration with suburban community

Threats

- Natural and human-caused problems
 - Increased foot traffic affects environment
 - Downstream logging
 - Floods and drought
- Backlash from suburban community

Horsehead Point Falls



Left cascade

Horsehead Point Falls

Right cascade

