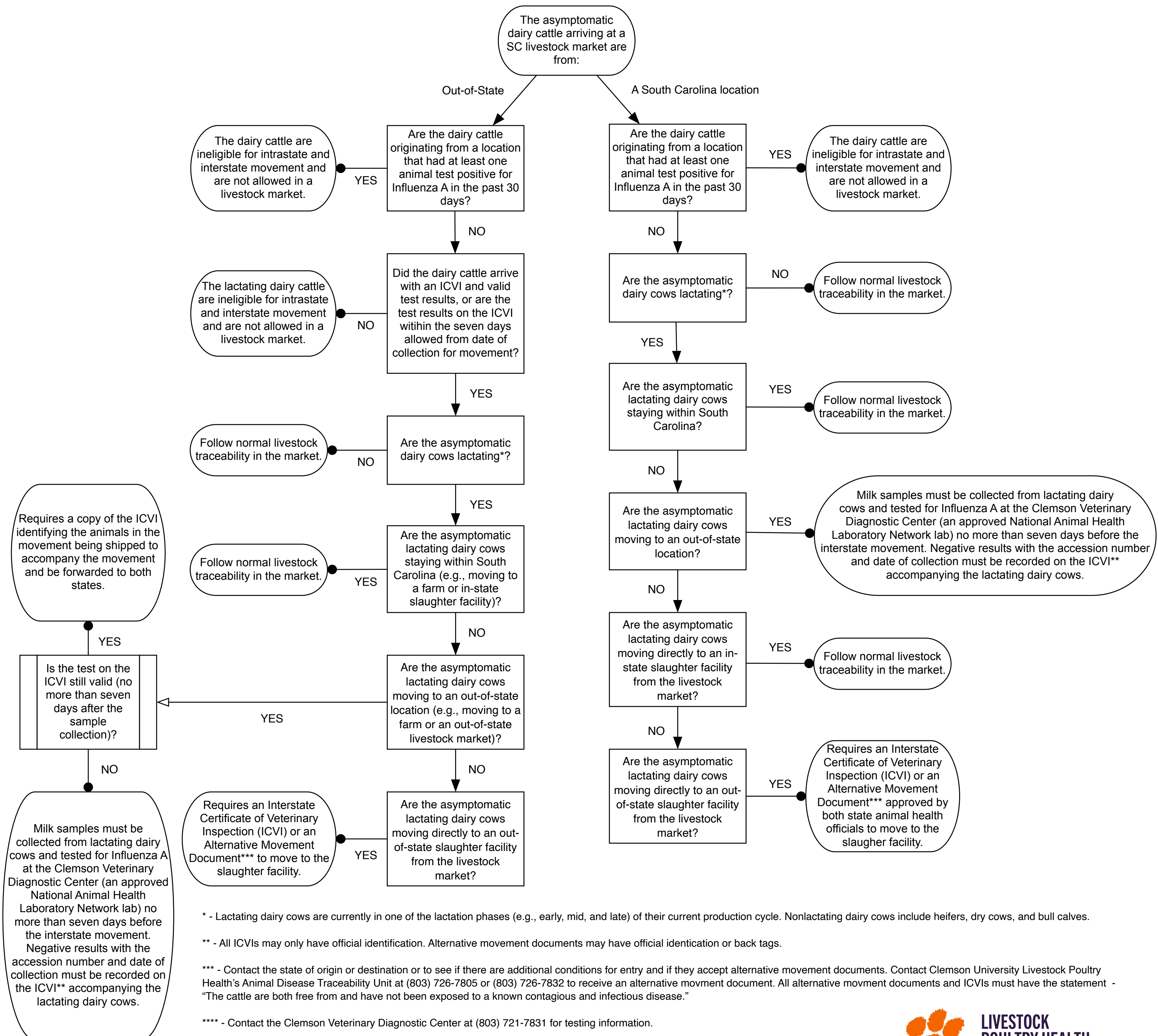


South Carolina Livestock Market Guidelines following USDA APHIS VS Federal Order Movement Requirements for HPAI H5N1 Virus Affecting Lactating Dairy Cows

Version 1.3 - May 6, 2024



* - Lactating dairy cows are currently in one of the lactation phases (e.g., early, mid, and late) of their current production cycle. Nonlactating dairy cows include heifers, dry cows, and bull calves.

** - All ICVIs may only have official identification. Alternative movement documents may have official identification or back tags.

*** - Contact the state of origin or destination or to see if there are additional conditions for entry and if they accept alternative movement documents. Contact Clemson University Livestock Poultry Health's Animal Disease Traceability Unit at (803) 726-7805 or (803) 726-7832 to receive an alternative movement document. All alternative movement documents and ICVIs must have the statement - "The cattle are both free from and have not been exposed to a known contagious and infectious disease."

**** - Contact the Clemson Veterinary Diagnostic Center at (803) 721-7831 for testing information.

Adapted from the USDA Federal Order Guidance released April 26, 2024, and the USDA Clarification Communication released on April 27, 2024.

