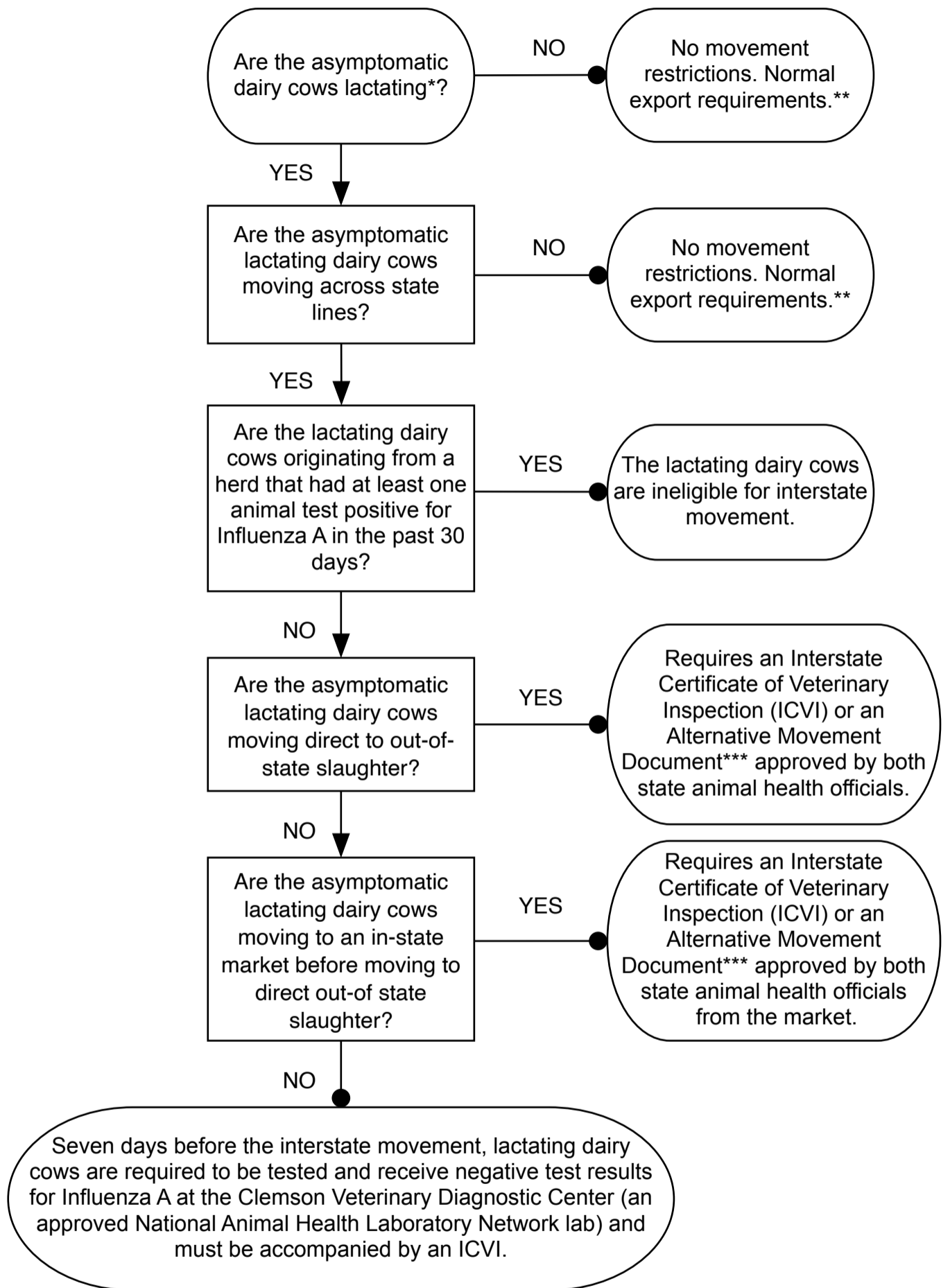


South Carolina Exporting Requirements following USDA APHIS VS Federal Order Movement Requirements for HPAI H5N1 Virus Affecting Lactating Dairy Cows

Version 1 - May 1, 2024



* - Lactating dairy cows are currently in one of the lactation phases (e.g., early, mid, and late) of their current production cycle. Nonlactating dairy cows include heifers, dry cows, and bull calves.

** - Contact the state of destination or visit InterstateLivestock.com to see if there are additional conditions for entry.

*** - Contact Clemson University Livestock Poultry Health's Animal Disease Traceability Unit at (803) 726-7805 or (803) 726-7832.

**** - Contact the Clemson Veterinary Diagnostic Center at (803) 788-2260 for testing information.