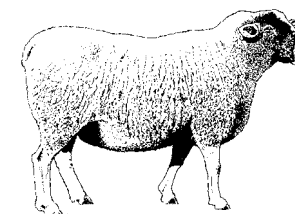


# BIOSECURITY FOR LIVESTOCK PRODUCTION

## Reportable Diseases & Reportable Conditions



Clemson University Cooperative Extension Service  
Dr. Dan B. Smith, Director  
Clemson University, Clemson SC 29634

(864) 656-3382  
(864) 656-5819 Fax

Clemson University Cooperative Extension Service offers its programs to people of all ages, regardless of race, color, sex, religion, national origin, disability, political beliefs, sexual orientation, marital or family status and is an equal opportunity employer.

Clemson University Cooperating with U.S. Department of Agriculture and South Carolina Counties. Issued in Furtherance of Cooperative Extension Work in Agriculture and Home Economics, Acts of May 8 and June 30, 1914.

**Prepared by Clemson University  
Cooperative Extension Service**

**and**

**Livestock-Poultry Health Programs**

**Printed by SC Farm Bureau**

## Reportable Diseases

There are a number of animal diseases that are listed as reportable in South Carolina. This means that the Veterinarian making the initial tentative diagnosis should notify the State Veterinarian's Office. This list includes many diseases with names familiar to livestock producers. They are listed on the Reportable Disease Website at [http://www.clemson.edu/LPH/reportable\\_diseases.htm](http://www.clemson.edu/LPH/reportable_diseases.htm)

Brucellosis

Tuberculosis

Pseudorabies

Equine Infectious Anemia (EIA)

Paratuberculosis - Johne's Disease

Pullorum - Fowl Typhoid

Eastern Equine Encephalomyelitis (EEE)

Western Equine Encephalomyelitis (WEE)

Venezuelan Equine Encephalomyelitis (VEE)

Scrapie and Scabies

Anthrax

Erysipelas

Rabies - coordinated with DHEC

Vesicular Stomatitis

Hog Cholera

Cattle Tick Fever

Foot and Mouth Disease

Vesicular Exanthema

Rinderpest

African Swine Fever

African Horse Sickness

Contagious Equine Metritis

Equine Viral Arteritis

All foreign and exotic diseases and parasites of animals and birds

## Reportable Conditions (Disease identified by clinical symptom)

In order to prevent the spread of serious disease, the State Veterinarian recommends that any of the five following conditions be reported to his office by the producer, herd veterinarian or Extension agent. People involved in the livestock industry that are not veterinarians should be able to spot these conditions.

### Reportable Disease in SC by Clinical Symptoms

1. Sore Mouth-Muzzle: especially if accompanied by foot, udder, vulva or skin lesions (Blisters-Vesicles)

Ex: Foot & Mouth

Vesicular Stomatitis, etc.

2. Central Nervous System problems: Encephalitis (CNS) conditions in all animals and birds.

Ex: Eastern, Western and Venezuelan Equine Encephalomyelitis, Pseudorabies, Bovine Spongiform Encephalopathy, Caprine Arthritis Encephalitis, Rabies, West Nile Encephalitis

3. High Death Loss: - especially over a short period and in animals more than several weeks old.

Ex: Hog Cholera, Erysipelas, Anthrax, Acute Septicemias

## 4. Reproductive Problems:

Ex: Brucellosis, Pseudorabies, Contagious Equine Metritis (CEM)

5. Any Highly Unusual Condition: Diseases or parasites differing from conditions one is familiar with.

Ex: All foreign and exotic diseases and parasites, unusual symptomatology of any kind.

Any producer familiar with livestock should be able to distinguish animals with these reportable conditions from farm animals that just don't feel well. When these conditions are identified, please call your veterinarian. Rather than ignoring the situation if you do not have a veterinarian to call, please report the situation directly to the SC State Veterinarian's office at 803-788-2260 or your County Extension agent.