

## Is My Operation Affected By This New Regulation?

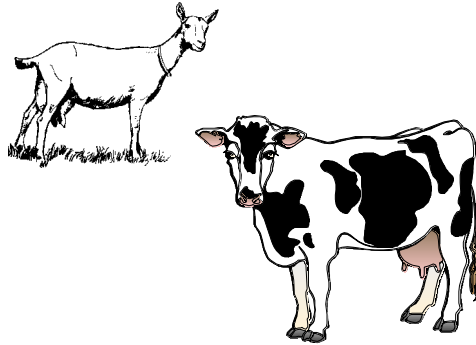
This provision applies to all livestock operations that feed ruminants. The regulation applies to “establishments and individuals that are responsible for feeding ruminants” to make it clear that **all responsible persons**, in both large and small feeding operations, are subject to the regulation.

- ! Examples include dairies, cattle feedlots, calf and lamb raising operations, cattle, sheep, and goat grazing operations.
- ! Feed and feed ingredients not containing animal proteins are not subject to the regulation.
- ! Renderers who sell meat and bone meal or other animal protein products to you or your supplier may not be able to determine the species of their incoming materials. Such material is considered “prohibited material” because it **“contains or may contain”** prohibited material.
- ! Persons who mix ruminant feed containing prohibited material, or feed prohibited material to ruminant animals would be subject to regulatory action under the Federal Food, Drug, and Cosmetic Act. Regulatory action could also include seizure of inventory, injunction against feeding prohibited material to ruminants, or prosecution.

Based on FDA Guidance For Industry 69.  
Prepared by Clemson University Extension  
Animal Scientists and Area Agents - Livestock in  
cooperation with Livestock-Poultry Health  
Programs

Additional information is available on the  
Animal & Veterinary Sciences Extension web  
page at the URL:

<http://www.clemson.edu/avs/Extension/BSE.htm>



Clemson University Cooperative Extension Service  
Dr. Dan B. Smith, Director  
Clemson University, Clemson SC 29634  
(864) 656-3382  
(864) 656-5819 Fax

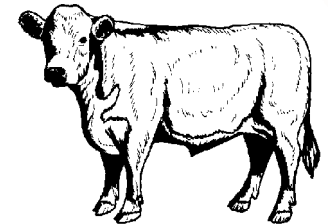
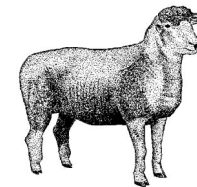
Clemson University Cooperative Extension Service  
offers its programs to people of all ages, regardless of  
race, color, sex, religion, national origin, disability,  
political beliefs, sexual orientation, marital or family  
status and is an equal opportunity employer.

Clemson University Cooperating with U.S.  
Department of Agriculture and South Carolina  
Counties. Issued in Furtherance of Cooperative  
Extension Work in Agriculture and Home Economics,  
Acts of May 8 and June 30, 1914.

# BSE

## South Carolina State Regulation 27-1028, Animal Proteins Prohibited In Ruminant Feeds

### Protect Your Cattle Herd Know The Rules



Prepared by Clemson University  
Cooperative Extension Service  
and  
Livestock - Poultry Health Programs

## The Purpose of this Regulation.

This regulation is designed to prevent the establishment of Bovine Spongiform Encephalopathy (BSE), sometimes referred to as “Mad Cow Disease”, through animal feed. The regulation prohibits the use of certain proteins derived from ruminants in feeding other ruminant animals. An example is meat and bone meal derived from cattle. There are certain products that are exempt from this regulation. They are:

- a. Protein products from mammals:  
Blood and blood products  
Milk products (milk & proteins)  
Pure pork or horse protein products  
Gelatin
- b. Nonmammalian protein products:  
Poultry, fish, vegetables
- c. Non protein products:  
Grease, tallow, fat, oil, amino acids

Proteins derived from ruminants and/or feeds containing these prohibited proteins cannot be fed to ruminant animals and are referred to as **prohibited material**. “Ruminant animals” are any animal with a four-chambered stomach including cattle, sheep, goats, buffalo, elk and deer.

## HOW DO I COMPLY WITH THE NEW REGULATION?

1. Do not mix feed for ruminant animals using ingredients labeled with caution statement **“Do Not Feed To Cattle or Other Ruminants.”**
2. If you mix feed for both ruminant and nonruminant animals, and you use prohibited material for the nonruminant animal feed:
  - ! Provide for measures to avoid cross contamination of materials by following separation or clean-out procedures.
  - ! Maintain written procedures that you develop and implement to prevent cross contamination.
  - ! Maintain records sufficient to track the prohibited materials throughout their receipt, processing, and distribution, and make records available for inspection and copying.

The records should contain dates of receipt or purchase of prohibited material or feed ingredients containing prohibited material; name and address of the seller; identification of the product; and quantity. Maintain records of the delivery of the finished feed to your feeding operation.

3. If any feed that you mix for nonruminant animals contains prohibited material and **does not remain within your immediate control** (e.g. shipped to a contract grower)
  - ! Label the outgoing product with the cautionary statement **“Do not feed to cattle or other ruminants.”**

3. Continued

! Maintain records of the delivery of finished feed which should include the date of delivery, the names and address of both you and your recipient, identification of the product, and quantity.

4. If you also purchase complete feed (feed that you do not mix before feeding):

- ! Maintain copies of all purchase invoices and labeling (e.g., one bag or feed tag) for **all** feed received that contains **animal protein** products.
- ! Keep invoices and labeling available for inspection and copying.

5. Maintain the records for a minimum of one year.

\* \* \*

, Cattle producers should anticipate being required to sign a letter of compliance indicating that cattle offered for sale have been fed only materials that are in compliance with the Food and Drug Administration Regulation, specifically, Title 21 Part 589.2000 of the Code of Federal Regulations.

, Poultry feeds may be formulated with ruminant protein. Read labels carefully before feeding poultry feeds or poultry litter to cattle.

**Additional reference materials on BSE are available through the Cooperative Extension Service. Call your local County Extension Office.**