

Cercospora Leaf Spot

Cercospora lythracearum

SYMPTOMS

Circular to angular brown spots begin occurring on the older lower leaves in late June and July. The leaves begin to turn bright yellow, orange or red and fall from the tree. As the summer progresses, many infected trees will have dropped all but the newest leaves. Repeated infections year after year will severely stress a tree and reduce its longevity.

DESCRIPTION OF PEST

This fungus colonizes leaf tissue and causes distinct sunken brown spots on leaves. Within the spots, there may be black fruiting structures evident with magnification.

LIFE CYCLE

Spores are produced within tiny stromata which erupt through the plant surface. These spores can be splashed from leaf to leaf causing new infections during warm, wet weather.

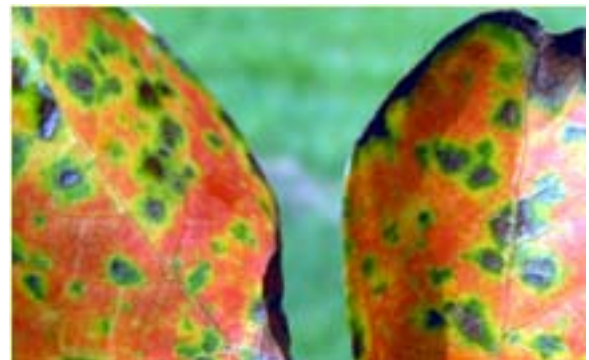
MANAGEMENT

CHEMICAL

Fungicides can be utilized to control *Cercospora* leaf spot on susceptible crape myrtle varieties. This should be started in early summer when the spots are first noticed and continued at one to two week intervals when the weather is warm and wet. Consult your local Extension office for fungicide recommendations.



Small distinct spots and yellowed leaves may be evident in early summer.



A closer view showing the sunken, angular lesions

** For tips on printing this document, please visit: www.clemson.edu/crepemyrtle/pdfprintingtips.htm

Cercospora Leaf Spot

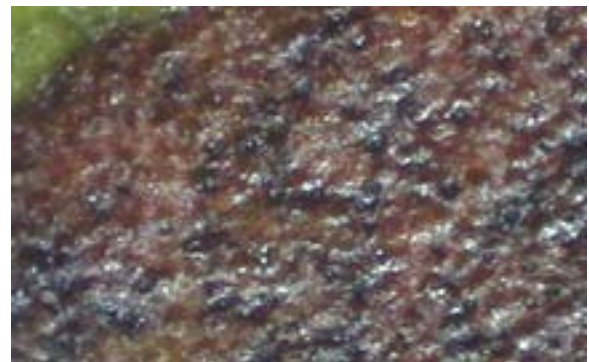
Cercospora lythracearum

BIOLOGICAL

The best biological control is selecting a planting site with good air circulation so that the foliage will dry quickly. Thinning interior branches will also promote air flow. The varieties Apalachee, Caddo, Catawba, Sioux, Tonto, Tuscarora, Tuskegee, and Yuma have been shown to have resistance to this disease.



By late summer all but the newest leaves have dropped from this tree.



A magnified view of the lesion shows the small, black fruiting structures (stromata) which contain masses of spores.

** For tips on printing this document, please visit: www.clemson.edu/crepemyrtle/pdfprintingtips.htm