

Is drought affecting you? We want to know!

The state of South Carolina is collaborating with the National Drought Mitigation Center and others to collect information on the effects of drought.



U.S. Drought Monitor
South Carolina

November 6, 2007
(Released Thursday, Nov. 8, 2007)
Valid 7 a.m. EST

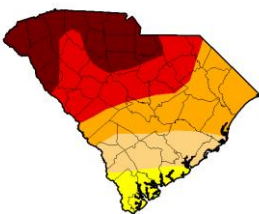
	Drought Conditions (Percent Area)						
	None	D0	D1	D2	D3	D4	D5
Current	0.26	530.00	82.37	79.08	41.00	25.04	
Last Week	0.26	433.00	83.37	79.08	51.00	24.00	
3 Months Ago	0.26	500.00	84.70	76.72	6.00	0.00	
Year of Calendar Year	85.10	0.00	0.00	0.00	0.00	0.00	
Year of Water Year	0.26	500.00	81.96	77.34	40.00	2.97	
One Year Ago	75.86	28.14	0.00	0.00	0.00	0.00	

Legend:
 D0: Abnormally Dry
 D1: Moderate Drought
 D2: Severe Drought
 D3: Extreme Drought
 D4: Exceptional Drought
 D5: Catastrophic Drought

Author:
Drought Log Center
OP/D/MS/A



<http://droughtmonitor.unl.edu/>



How does reporting benefit you?

Agencies across South Carolina are tasked with monitoring drought conditions and taking appropriate actions to help respond to and mitigate drought impacts. At the federal level, the data is used by the authors of the U.S. Drought Monitor to make informed decisions that verify the numerical inputs used for the creation of the weekly map. The U.S. Drought Monitor map triggers various drought responses, including USDA disaster relief and Internal Revenue Service tax provisions.

How to submit a report:

- Go to the current, mobile-friendly survey: <http://bit.ly/droughtreport19>
- Use the form to pinpoint your **location**, or let us know what county you are in, as well as the **date** of your observation or photo.
- How dry or wet is it?** Pick from seven levels, ranging from severely dry to severely wet. Short descriptions can be found on the survey to help you determine a level.
- What **impacts of drought or flooding** are you experiencing? Click on any categories that are relevant to you and see a list of potential impacts and check all that you are experiencing.
- Upload a photo.** By uploading an optional photo, you agree that it may be used and shared for educational and management purposes. If you plan to submit regular reports, the photo should be of the same spot to provide a consistent set of observations to contrast changing conditions.
- Provided any **additional description** information.
- Optional: Provide your contact information, which will not appear on the web, but could be useful for potential follow-up.*



Report Your Drought Impacts

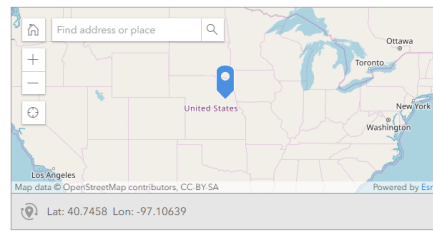
Drought Condition & Impact Reporting

Introduction

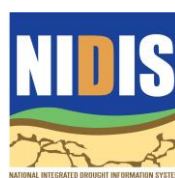
Report drought-related conditions and impacts within the U.S. This is a nation-wide service provided by the National Drought Mitigation Center, based at the University of Nebraska, in partnership with the National Integrated Drought Information System. Information submitted by this form appears on [this map](#).

Where are you?*

Please position the marker on the map to ensure that your report appears in the right location. You can enter the city or county into the search window on the map, or, depending on your browser and settings, you may be able to drag the map to reposition it or click on the compass icon to share your exact location. Please note that the option to select a county and state below helps us double-check location information but does not position your report correctly on the map.



NATIONAL DROUGHT
MITIGATION CENTER
AT THE UNIVERSITY OF NEBRASKA-LINCOLN



Example Categories (Sectors) and Drought Related Impacts



Agriculture

- Decreased crop production and livestock weights
- Reduced yields, pastures, forage
- Animal and plant stress
- Increased irrigation or hauled water
- Insect infestation
- Sold livestock



Fire

- More fires and more intense fires
- Burn bans
- Poor air quality
- High fire risks
- Property damage and loss of habitat
- Park or road closures
- Wildlife foraging near people



Water

- Voluntary or mandatory conservation
- Low or dry wells
- Reduced fishery production and mortality
- Water receding from access
- Water quality changes and issues
- Water rate changes
- Broken pipelines

What happens to your reports?

Condition monitoring reports appear on a map that initially displays the dry-wet categories the observer chose on the scale. Reports can be filtered to display category or sector-based impacts.

How often should you report?

We recommend submitting a report once a week, to provide an ongoing comparison of wet, dry and normal conditions at your location. This will provide information on the varying local impacts.

Contact Information

Melissa Griffin

Assistant State Climatologist
South Carolina State Climatology Office
South Carolina Department of Natural Resources
Phone: (803)-734-9091
Email: drought@dnr.sc.gov

Katherine Helms

Marketing Specialist
South Carolina Department of Agriculture
Phone: (803)-734-5229
Email: khelms@scda.sc.gov

For more information

South Carolina Drought: <http://scdrought.com>
Drought Impact Reporter: <http://droughtreporter.unl.edu/submitreport>
US Drought Monitor: <https://droughtmonitor.unl.edu>
About the US Drought Monitor: <http://droughtmonitortutorial.org/>
NIDIS: <https://www.drought.gov>



NATIONAL DROUGHT
MITIGATION CENTER
AT THE UNIVERSITY OF NEBRASKA-LINCOLN

